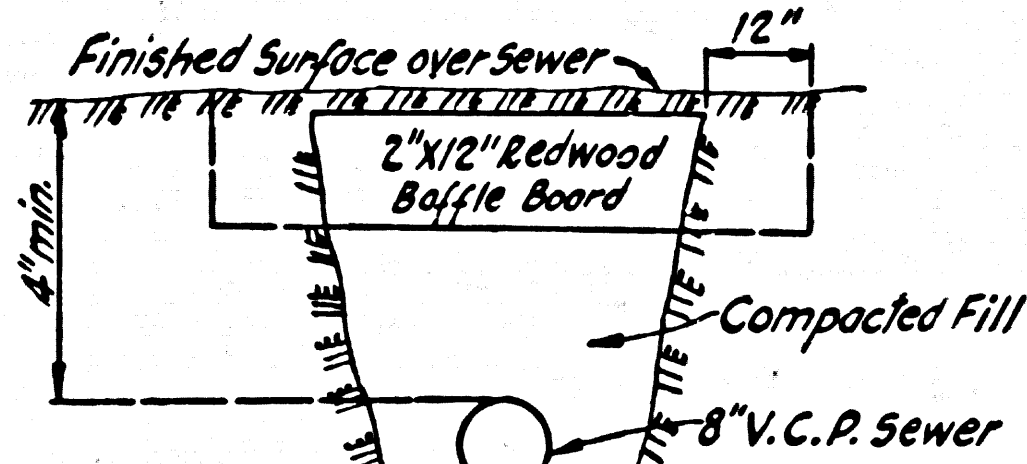


BENCH MARK:  
S.Y. 4380 2" I.P. with Concrete Plug & Spike  
12" deep ± 77' w/o Hawthorne Blvd. approx.  
center of Long Tangent Sta. 29+00 ± 1/4 Mile  
N. Crest Road Elev. 1030.973



BAFFLE BOARD DETAIL  
No Scale

- NOTES
1. Each end of Baffle Board will extend one foot into undisturbed ground.
  2. The upper layer of backfill to be one foot minimum top soil. Top soil shall be tamped in place & planted with mustard & rye grass seed & adequately watered until growth is restored.
  3. Baffle Boards shall be spaced so that the top of the lower board shall be level with the bottom of the next higher board.
  4. If 90% Compaction is obtained in the backfill within the Tract, baffles will not be required.

NOTE

The following lots are served by P.C. 6060

- Lots 25-32 inclusive
- " 33-37 "
- " 117-125 "
- " 9-17 "

The following lots are served by P.C. 6125  
Lots 109 and 110

REVISIONS  
DELETE N.L. FOR LOT # 5 B, MOVED  
N.L. LOT # 59 Page 17  
APPROVED *E. J. Smith*  
6-7-62

NO CHARGE  
FOR CONNECTIONS  
*Older Law*

NO CONNECTIONS FOR THE DISPOSAL OF INDUSTRIAL WASTES SHALL BE MADE TO SEWERS SHOWN ON THESE DRAWINGS WITHOUT WRITTEN PERMISSION FROM THE CHIEF ENGINEER AND GENERAL MANAGER OF THE COUNTY SANITATION DISTRICTS.

PRIVATE ENGINEER'S  
NOTICE TO CONTRACTOR

THE EXISTENCE AND LOCATION OF ANY UNDERGROUND UTILITY PIPES OR STRUCTURES SHOWN ON THESE PLANS ARE OBTAINED BY A SEARCH OF THE AVAILABLE RECORDS. TO THE BEST OF OUR KNOWLEDGE THERE ARE NO EXISTING UTILITIES EXCEPT AS SHOWN ON THIS MAP. THE CONTRACTOR IS REQUIRED TO TAKE PRECAUTIONARY MEASURES TO PROTECT THE UTILITY LINES SHOWN AND ANY OTHER LINES NOT OF RECORD OR NOT SHOWN ON THIS DRAWING.

INDEX MAP  
TRACT No 25108  
P.C. 6006  
Scale: 1" = 400'

DOUBLE SCALE  
LOMITA BLDG. DIST. NO. 12

PROFILE ALIGNMENT AND GRADE OF P.C. 6006  
SANITARY SEWERS PAGE 1  
TO BE CONSTRUCTED IN J.N. 0356.75

TRACT No 25108  
PRIVATE CONTRACT NO. 6006

W.S. 27  
9 SHEETS; 17 PAGES  
SCALE: VERT. 1" = 6'  
HORIZ. 1" = 40'  
MARCH, 1962

PREPARED IN THE OFFICES OF  
ENGINEERING SERVICE CORPORATION

FOR LEGEND SEE PLAN NO. S-A-64

NOTES  
PROVIDE STAKES ON THE PROPERTY LINE OR PROPERTY LINES PRODUCED AT RIGHT ANGLES TO THE SEWER LINE AT THE CENTER LINE OF EACH MANHOLE.

NO REPRESENTATIVE OF THE COUNTY ENGINEER WILL SURVEY OR LAYOUT ANY PORTION OF THE WORK.

THE OWNER OR HIS AUTHORIZED REPRESENTATIVE SHALL FURNISH THE COUNTY ENGINEER WITH GRADE SHEETS AND STATION FOR ALL HOUSE LATERALS AND Y BRANCHES AND SHALL PROVIDE STAKES FOR THEM AT THEIR PROPER LOCATIONS WITH STATIONING PLAINLY MARKED. ANY CHANGE IN LOCATION SHALL BE REQUESTED IN WRITING BY THE OWNER OR HIS REPRESENTATIVE.

NO REVISIONS SHALL BE MADE IN THESE PLANS WITHOUT THE APPROVAL OF THE COUNTY ENGINEER.

1. USE STANDARD MANHOLE FRAMES AND COVERS, S-A-117.
2. USE EXTRA STRENGTH PIPE, ALL PIPE IS STANDARD DEPTH, EXCEPT AS NOTED.
3. USE "WEDGE LOCK" OR "SPEED SEAL" FOR ALL V.C.P. JOINTS PER SPECIFICATIONS SECTION 90 & 40 IN ALL CURVED SEWERS.
4. RESURFACE ALL TRENCH WITHIN PAVED AREA TO MEET L. A. COUNTY ROAD DEPT., OR CALIF. STATE HIGHWAY DEPT. REQUIREMENTS IN ACCORDANCE WITH PERMITS.
5. ENCASE FOUR FEET OF SEWER AT POINTS OF INTERFERENCE WITH POLES, S-A-118.
6. HOUSE LATERALS TO BE CONSTRUCTED WITH INVERTS AT PROPERTY LINE, 6" FEET BELOW CURB GRADE, EXCEPT AS NOTED.
7. ALL STRUCTURES SHALL BE BRICK SEWER STRUCTURES, S-A-104, EXCEPT AS NOTED.
8. FOR ALLOWABLE LEAKAGE TEST USE FORMULA NO. 1000, SPEC. SEC. 54.
9. MANHOLE TOPS IN UNIMPROVED RIGHTS-OF-WAY TO BE 6" ABOVE FINISHED GRADE, EXCEPT AS NOTED.
10. THE PRIVATE ENGINEER SHALL FURNISH THE HOUSE LATERAL DEPTH AT THE PROPERTY LINE BELOW THE TOP OF CURB ELEVATION FOR EACH HOUSE LATERAL ON THE GRADE SHEET.
11. THE CONTRACTOR SHALL NOTIFY THE CONSTRUCTION DIVISION BY TELEPHONE HL 8-4747 EXT. 8151 AT LEAST 24 HOURS BEFORE STARTING ANY WORK UNDER THIS CONTRACT.
12. SPECIFICATIONS DATED OCT. 25, 1961 APPLY IN THE CONSTRUCTION OF THIS PROJECT.
13. (A) CONSTRUCTION SHALL BE PERMITTED IN FILLED AREAS UNLESS ACCEPTABLE CATERING IS SUBMITTED TO THE CONSTRUCTION DIVISION OF THE COUNTY ENGINEER'S DEPARTMENT THAT RELATIVE COMPACTION IS GREATER THAN 80%.
- (B) IF COMPACTION IS LESS THAN 80%, THE SEWER MUST BE CRADLED AS SHOWN ON THE PLANS PER S-A-106.
- (C) IF COMPACTION IS 80% OR GREATER, CRADLING IS NOT REQUIRED. HOWEVER, "WEDGE LOCK" OR "SPEED SEAL" MUST BE SUBSTITUTED FOR CEMENT JOINTS FOR ALL JOINTS IN FILLED AREAS. IF COMPACTION IS 90% OR GREATER, SPECIAL MANHOLE B-S-81 ARE NOT REQUIRED.

ENGINEERING SERVICE CORPORATION 1127 W. WASHINGTON BLVD. LOS ANGELES 15, CALIF. RI. 9-7281	
REVISIONS	TRACED BY <i>C.E.</i>
	DES'G'D BY <i>E.K.K.R.E.L.V.</i>
	CHK'D BY
	SUBMITTED
SUB STRUCTURES OK'D	
W. O. NO.	DWG. NO.
6681-222	Feb. 1962
DATE	SCALE
	As Noted
L.S.	P.B.

NOTE

GRADES TO WHICH THIS IMPROVEMENT IS TO BE CONSTRUCTED ARE SHOWN ON PLANS AND PROFILES. GRADE POINTS FOR TOP OF CURBS, CENTER LINE OF STREETS, OR CENTER LINE OF ALLEYS ARE SHOWN BY CIRCLES ON PROFILES. AT ALL POINTS BETWEEN DESIGNATED POINTS THE GRADE SHALL BE ESTABLISHED SO AS TO CONFORM TO A STRAIGHT LINE DRAWN BETWEEN SAID DESIGNATED POINTS.  
ELEVATIONS ARE IN FEET ABOVE U.S.C. & G.S. SEA LEVEL DATUM OF 1929.  
THIS DRAWING AND THE DATA HEREON ARE HEREBY MADE A PART OF THE SPECIFICATIONS.  
WORK SHALL BE CONSTRUCTED ACCORDING TO SPECIFICATIONS ON FILE IN THE OFFICE OF THE COUNTY ENGINEER AND SHALL BE PROSECUTED ONLY IN THE PRESENCE OF THE COUNTY ENGINEER.  
BEFORE WORK CAN BE STARTED, THE CONTRACTOR MUST OBTAIN A PERMIT TO EXCAVATE IN COUNTY STREETS FROM THE L. A. COUNTY ROAD DEPT., DISTRICT OFFICE AND PAY A FEE TO THE COUNTY ENGINEER, ROOM 810 COUNTY ENGINEERING BLDG., 400 W. 2<sup>ND</sup> STREET, SUFFICIENT TO COVER THE COST OF CONSTRUCTION INSPECTION AND RECORD PLANS.  
APPROVAL OF THIS PLAN BY THE COUNTY OF LOS ANGELES DOES NOT CONSTITUTE A REPRESENTATION AS TO THE ACCURACY OF THE LOCATION OF OR THE EXISTENCE OR NON-EXISTENCE OF ANY UNDERGROUND UTILITY PIPE, OR STRUCTURE WITHIN THE LIMITS OF THIS PROJECT. THIS NOTE APPLIES TO ALL PAGES.  
IF WORK IS TO BE DONE IN A STATE HIGHWAY, A PERMIT MUST BE OBTAINED FROM THE STATE OF CALIFORNIA, DIVISION OF HIGHWAYS, 120 SOUTH SPRING STREET.

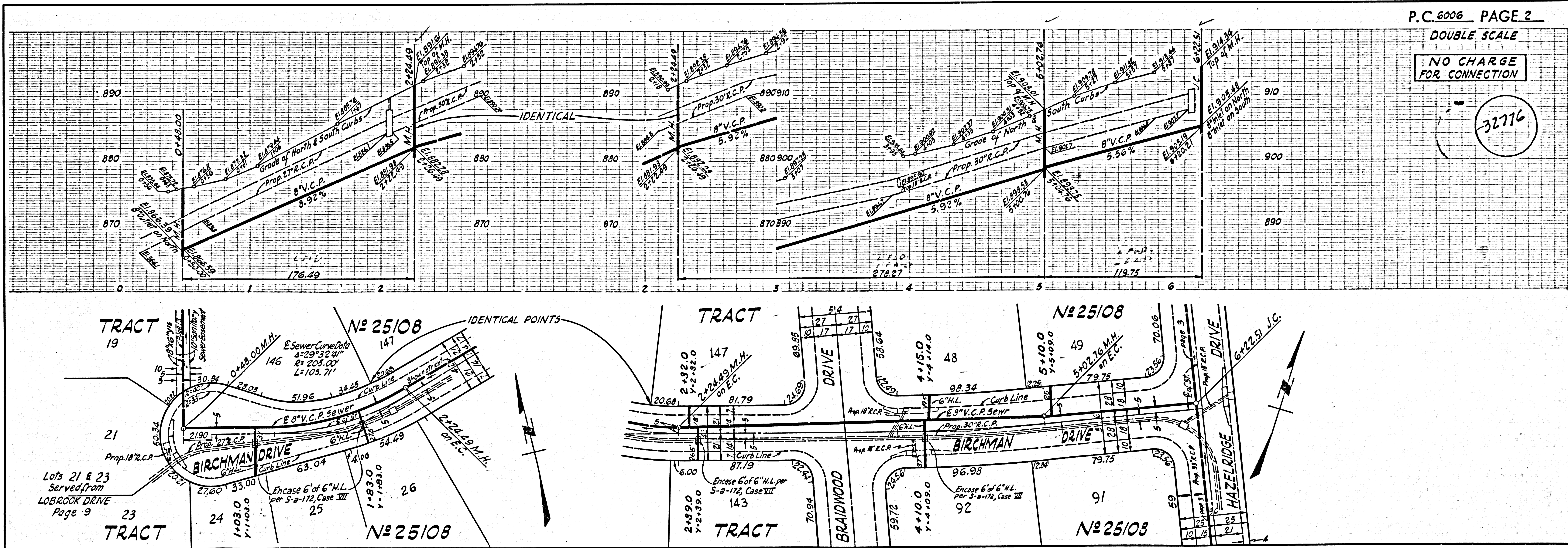
COUNTY OF LOS ANGELES, CALIFORNIA

APPROVED, JOHN A. LAMBIE, COUNTY ENGINEER  
APPROVED, J.A. McNESTY CHIEF ENGINEER  
BY *John A. Lambie* SANITATION ENGINEER  
BY *J.A. McNesty* OFFICE ENGINEER  
CHECKED BY *W. W. Winder* 4-13-62  
OFFICE OF COUNTY ENGINEER, 800 C. E. NO. 3466

SUBMITTED *Jack C. Lansing* E.E.  
PALOS VERDES-CENTINELA VALLEY REGIONAL ENGINEER

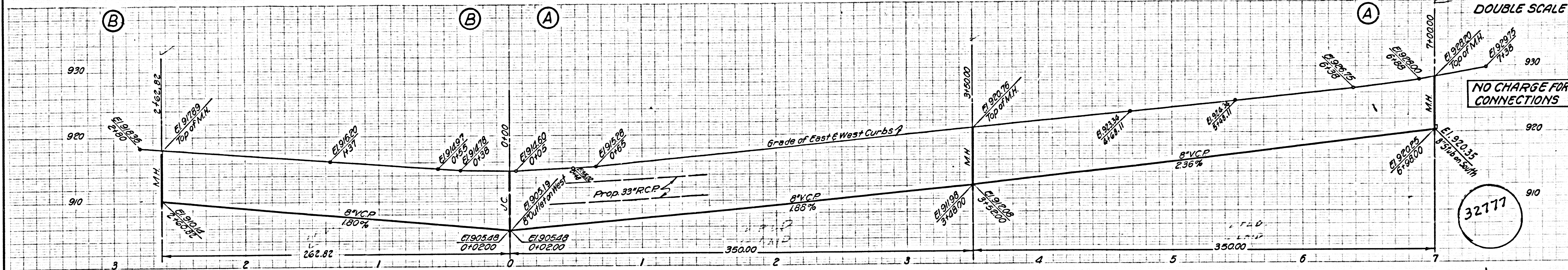
P.C. 6006 PAGE 2  
DOUBLE SCALE

NO CHARGE  
FOR CONNECTION

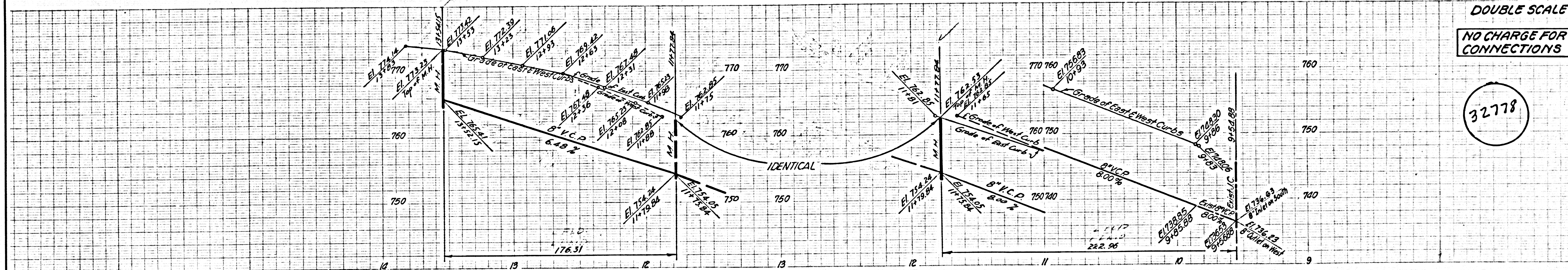
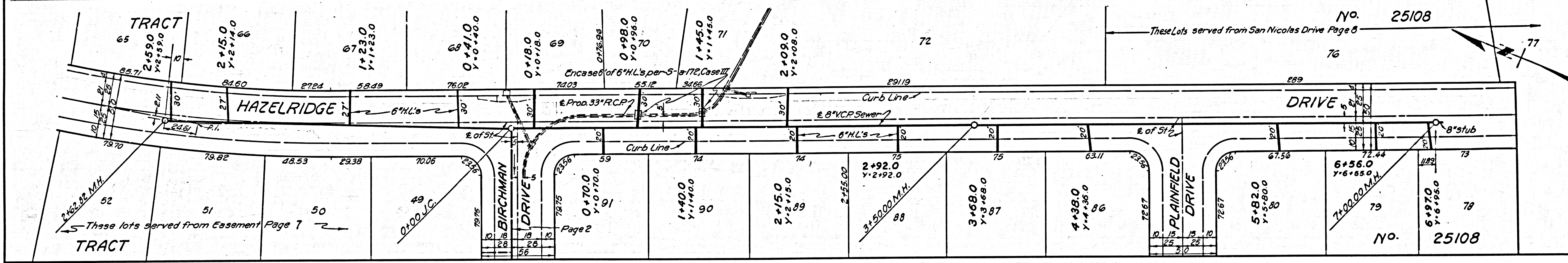


32776

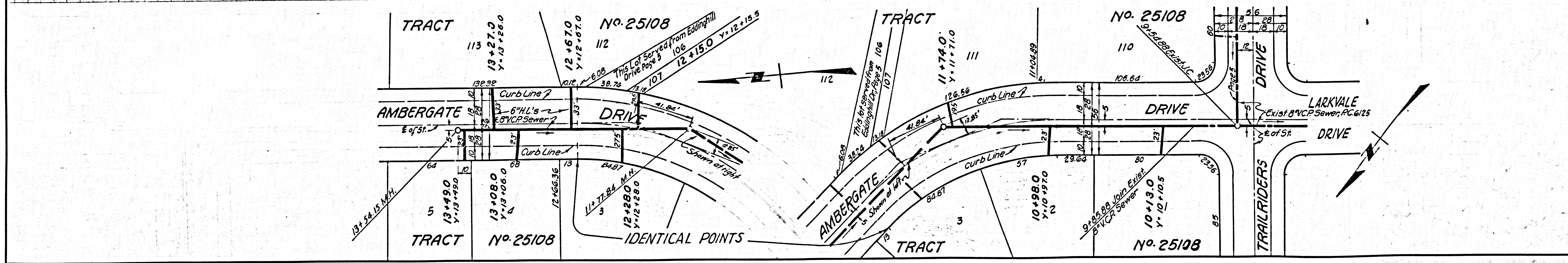




NO CHARGE FOR CONNECTIONS



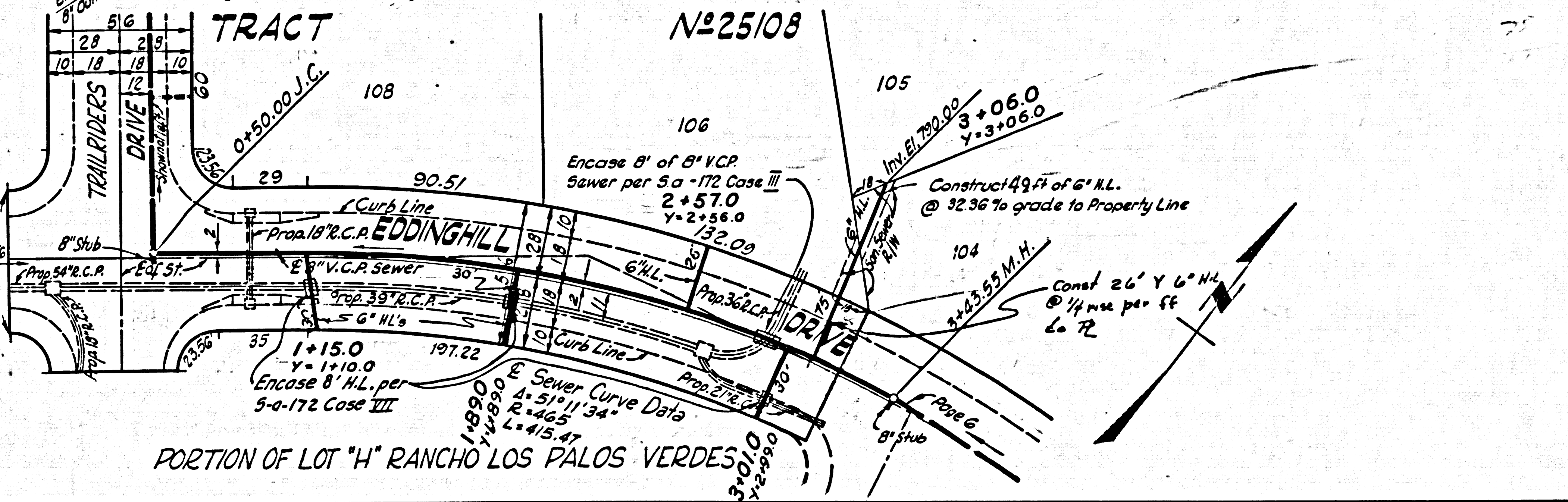
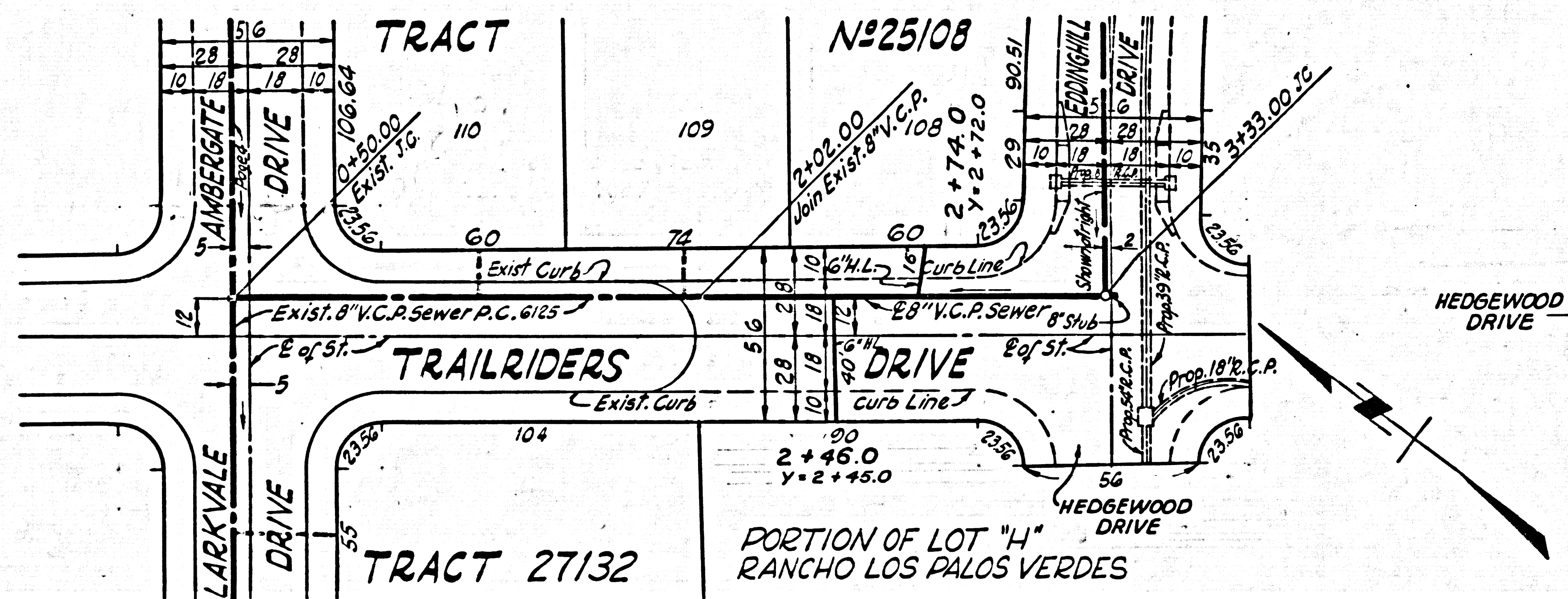
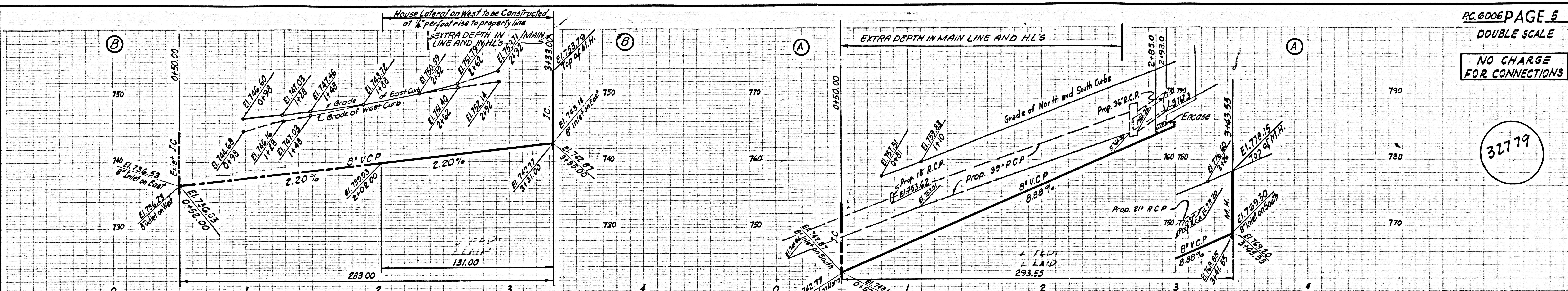
NO CHARGE FOR CONNECTIONS





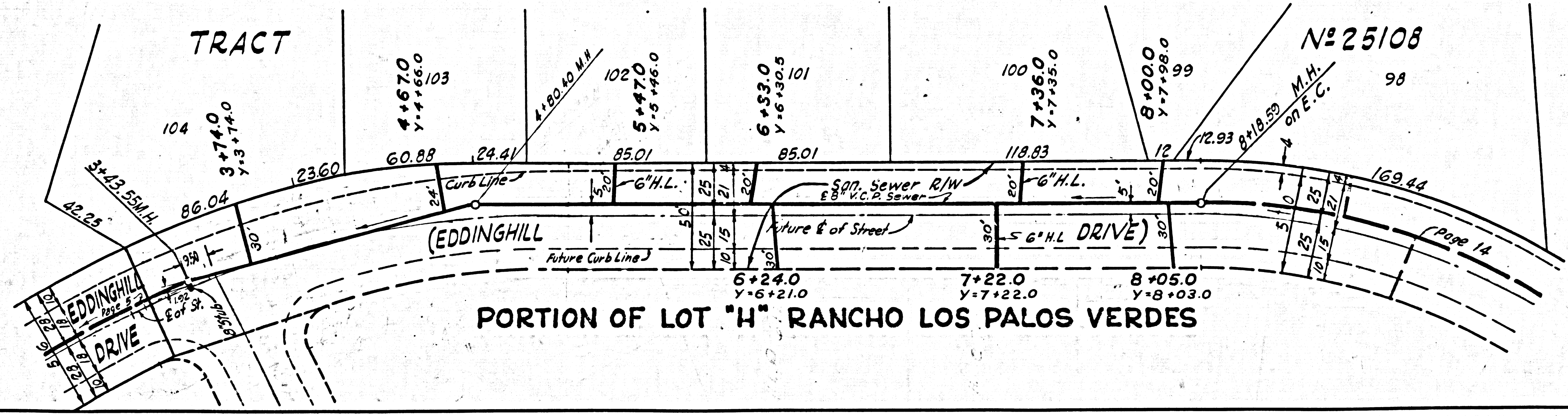
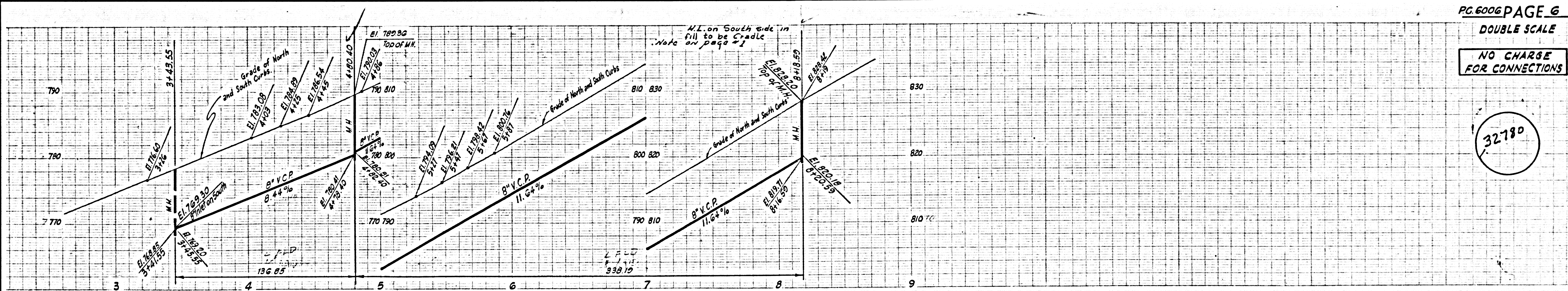
NO CHARGE FOR CONNECTIONS

32779



NO CHARGE FOR CONNECTIONS

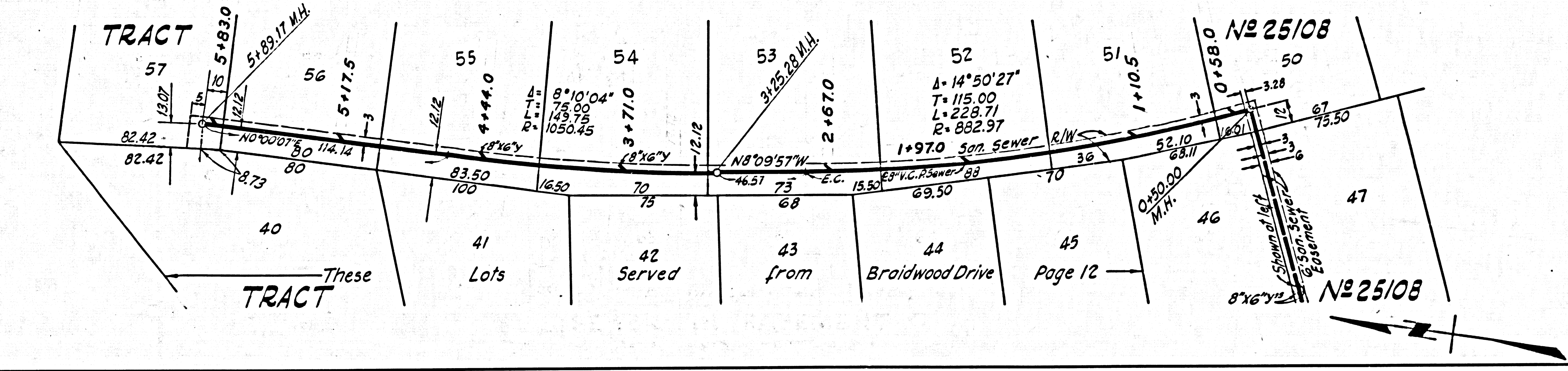
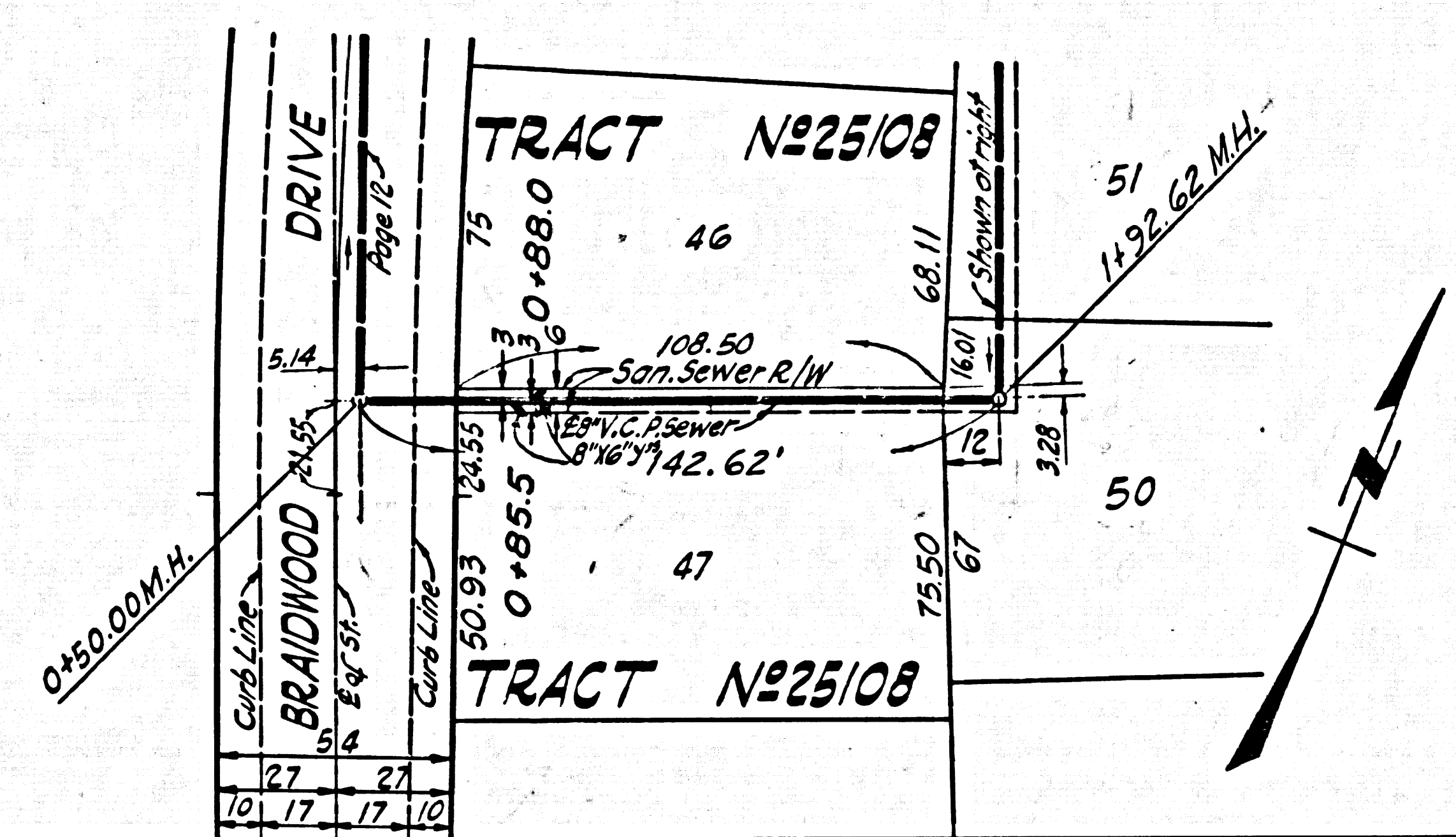
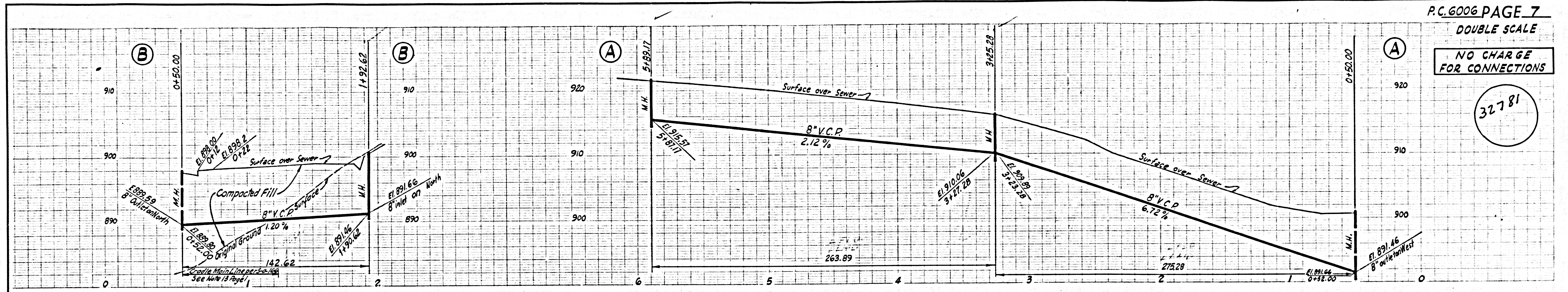
32780





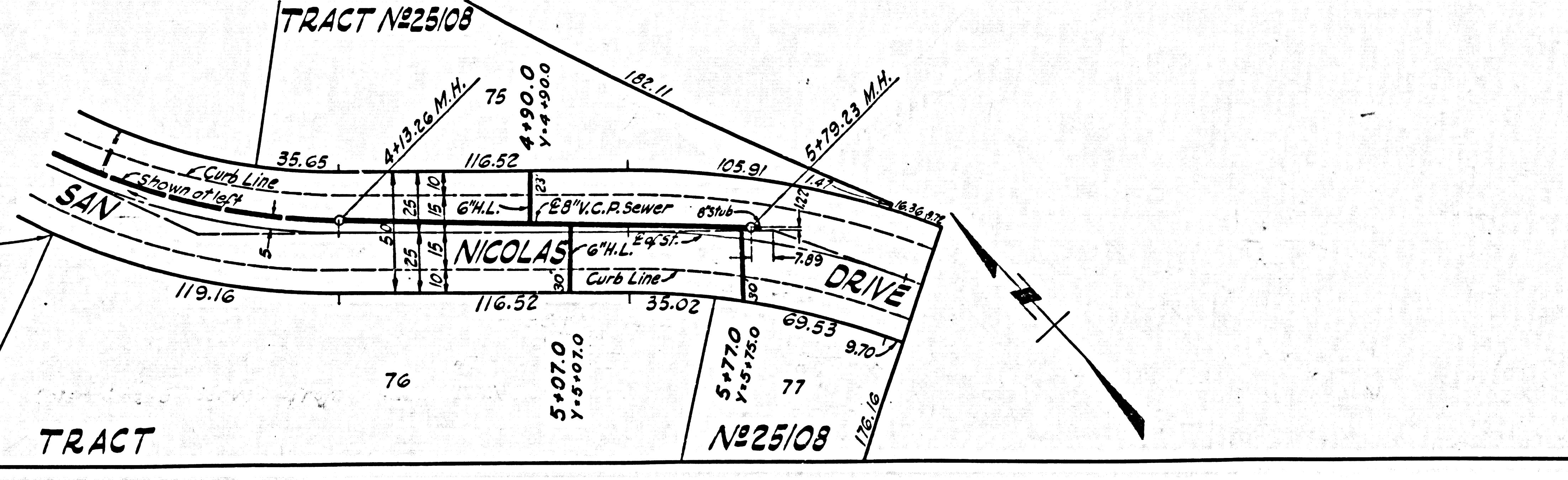
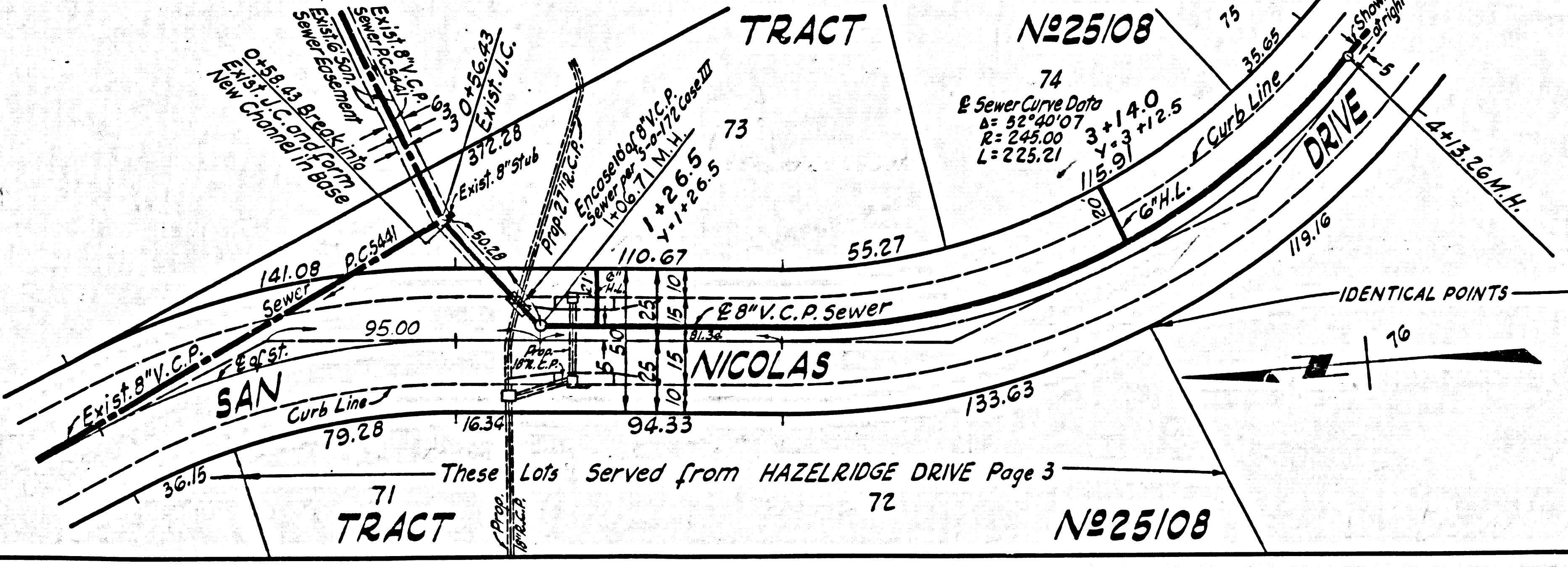
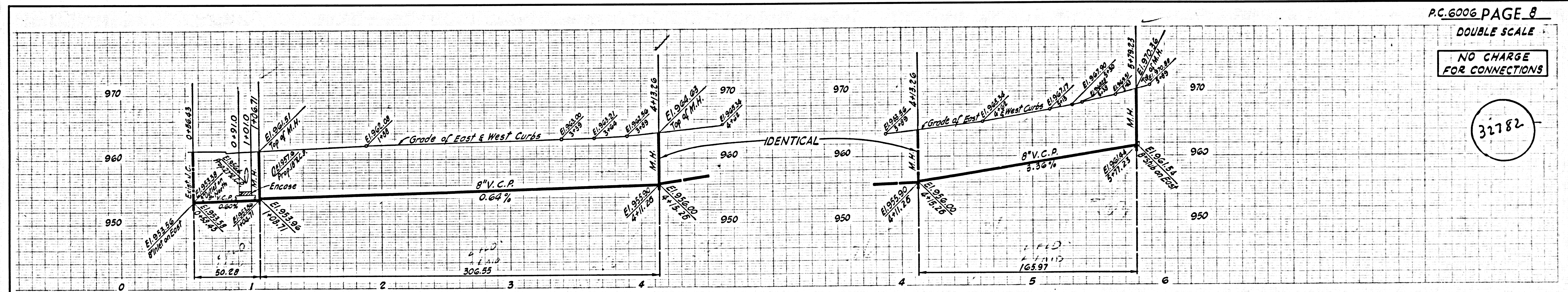
NO CHARGE  
FOR CONNECTIONS

32781



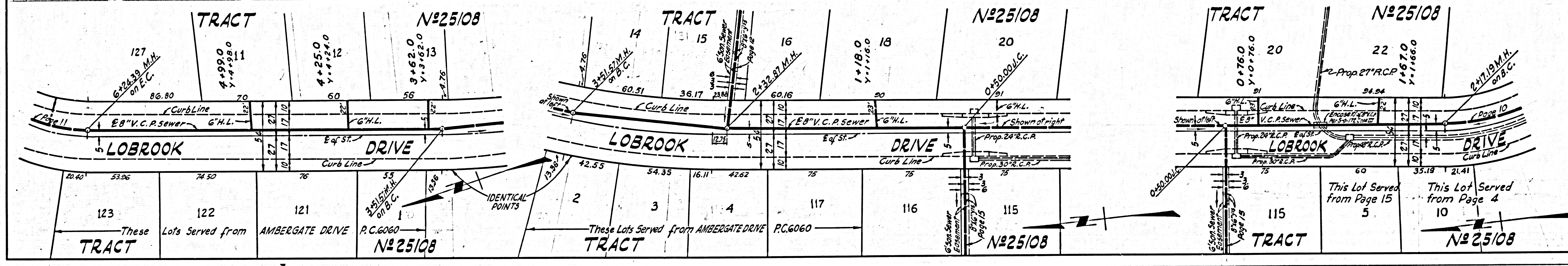
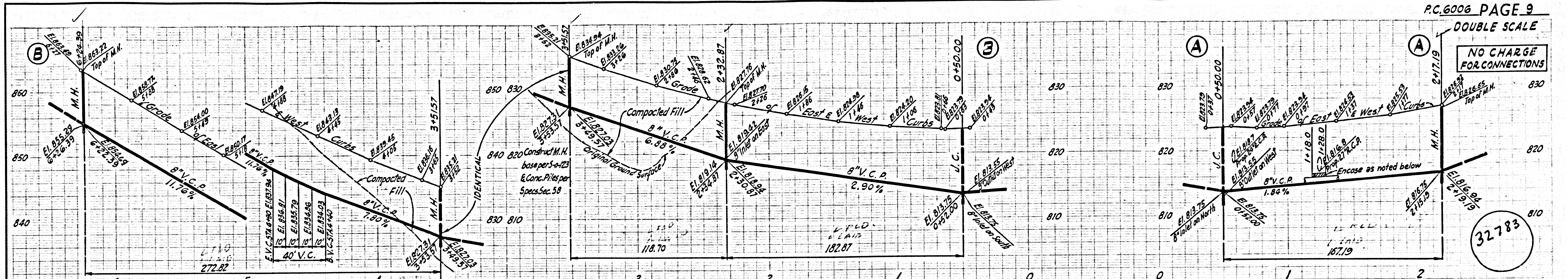
NO CHARGE  
FOR CONNECTIONS

32782

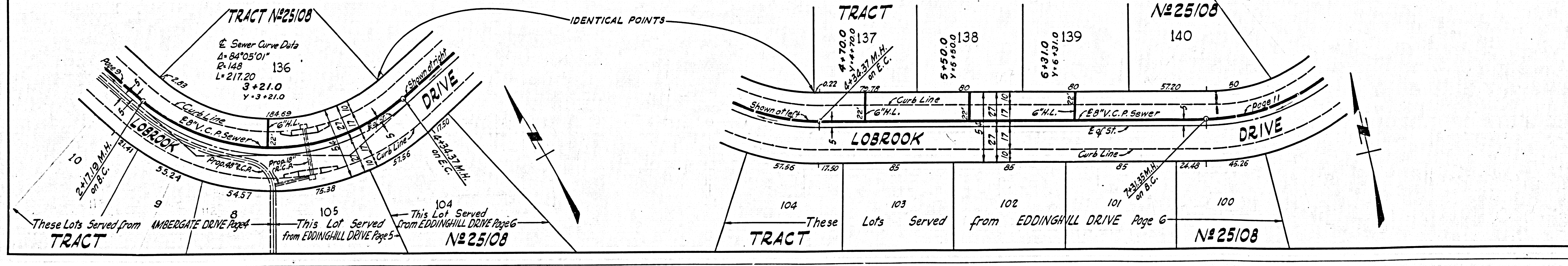
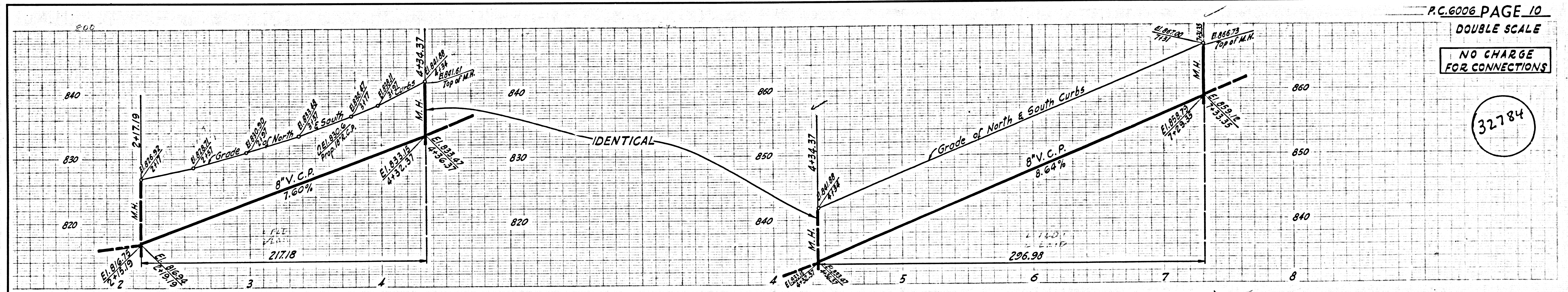




NO CHARGE FOR CONNECTIONS

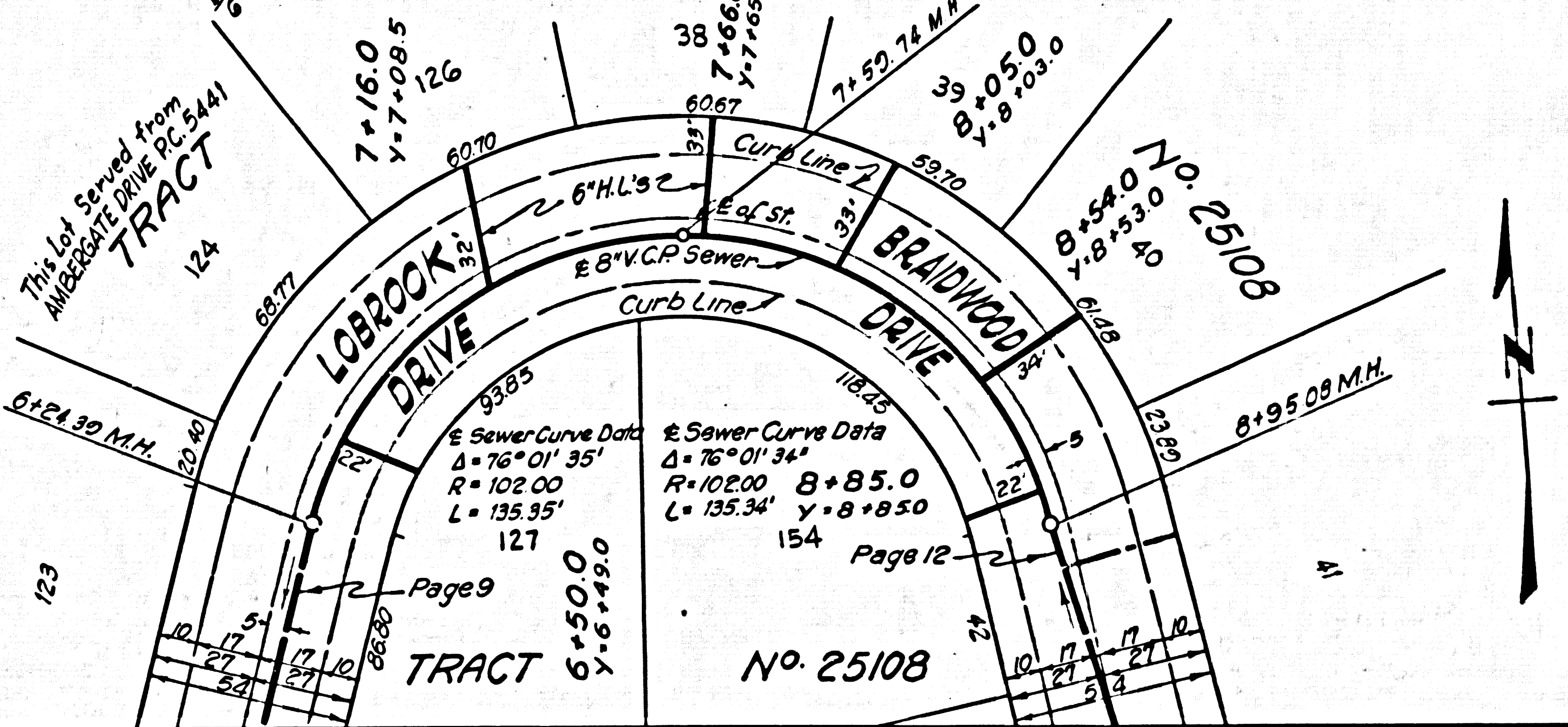
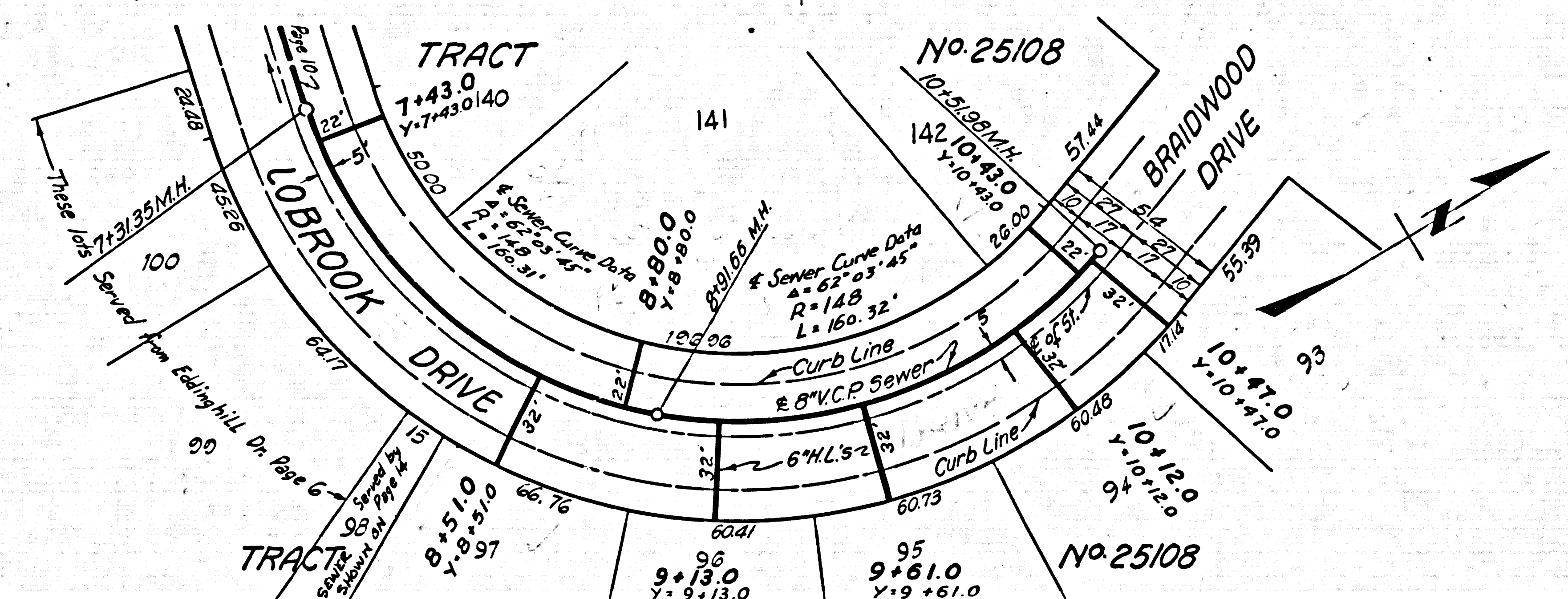
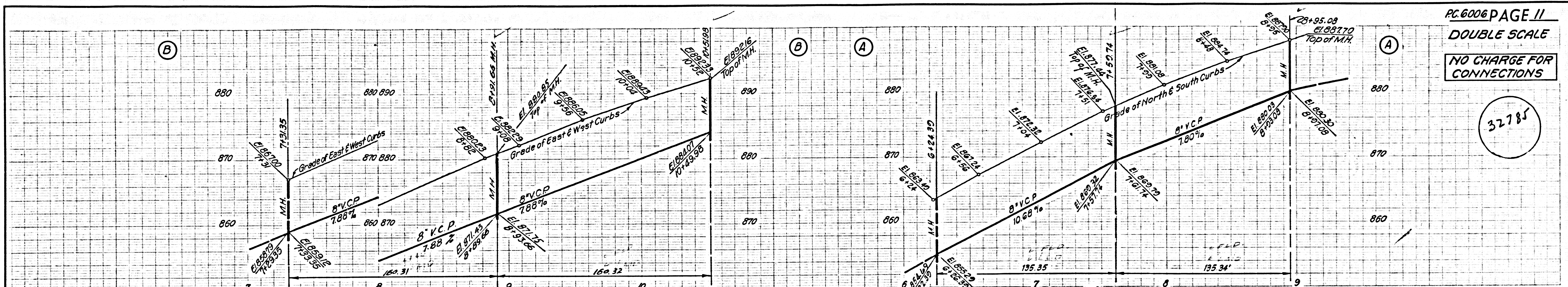


NO CHARGE FOR CONNECTIONS

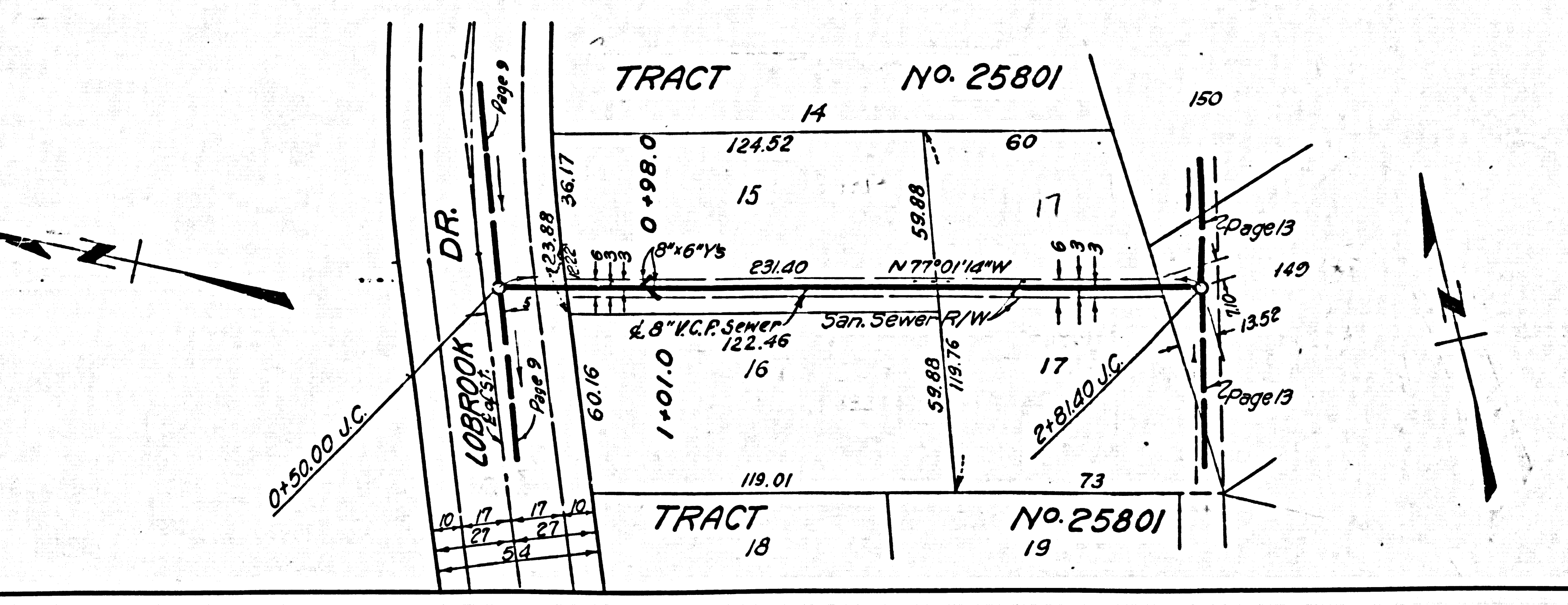
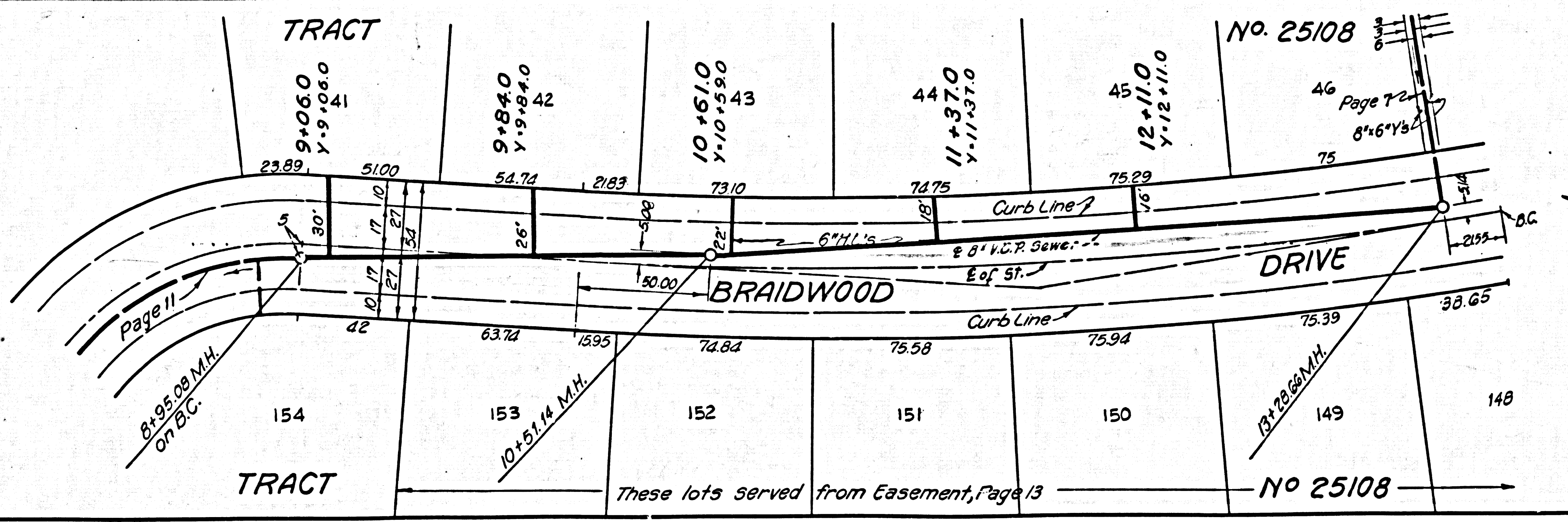
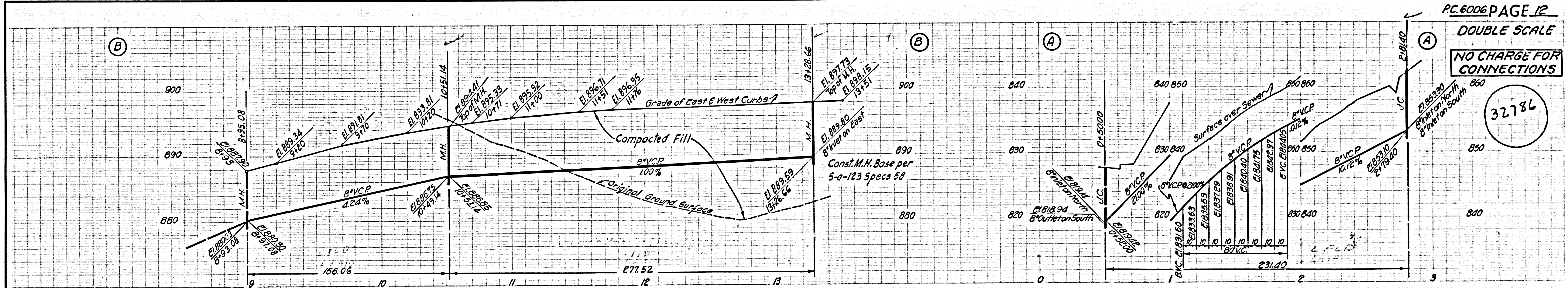




32785



32786

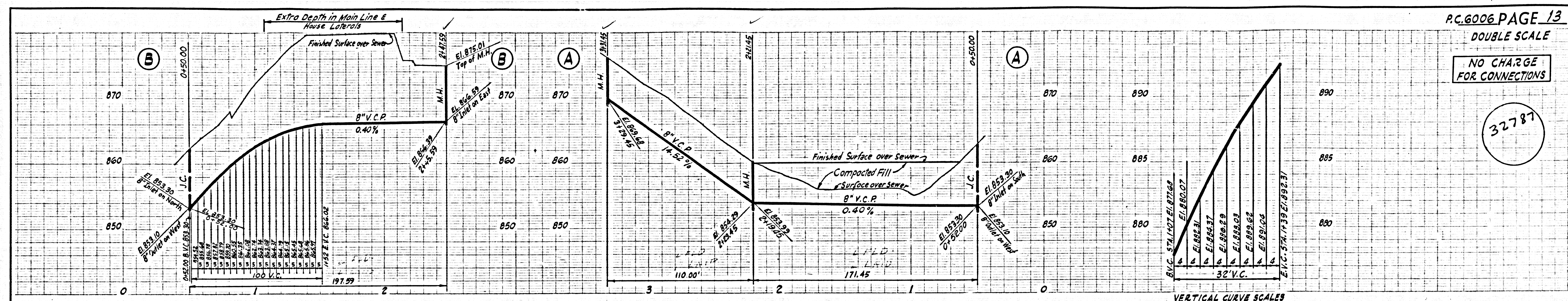




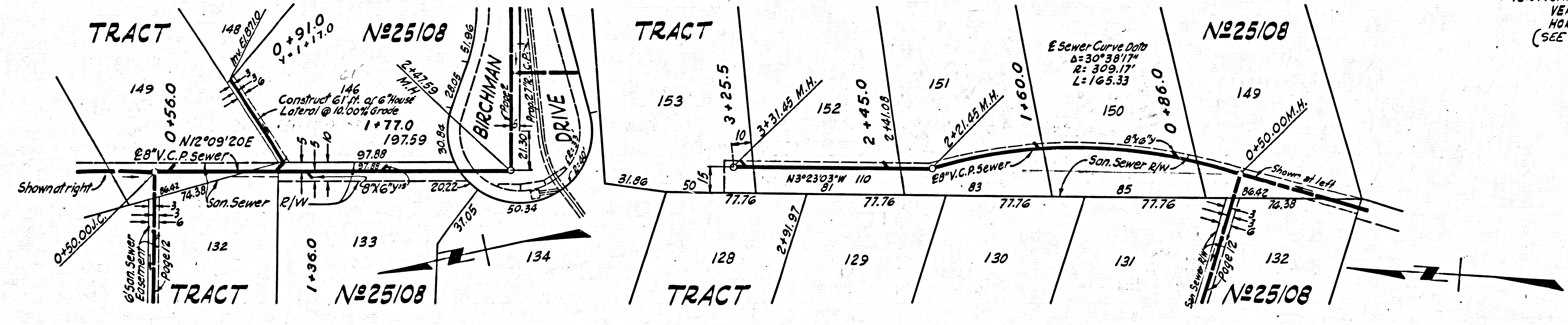
DOUBLE SCALE

NO CHARGE FOR CONNECTIONS

32787



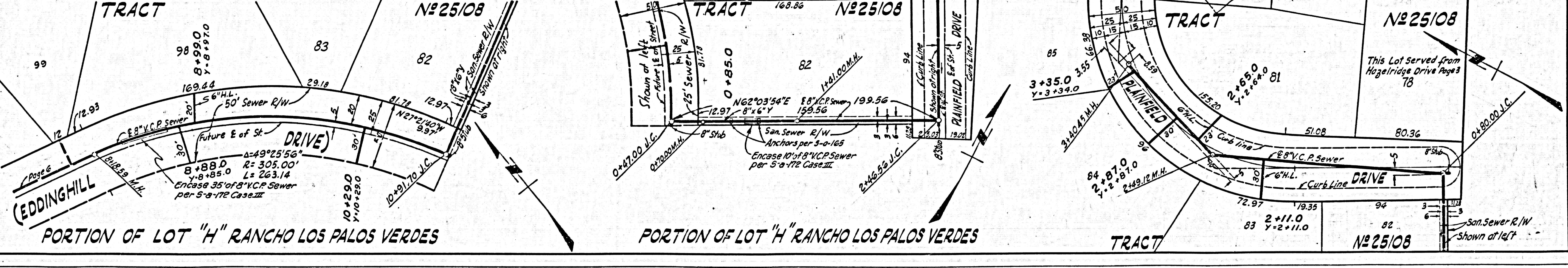
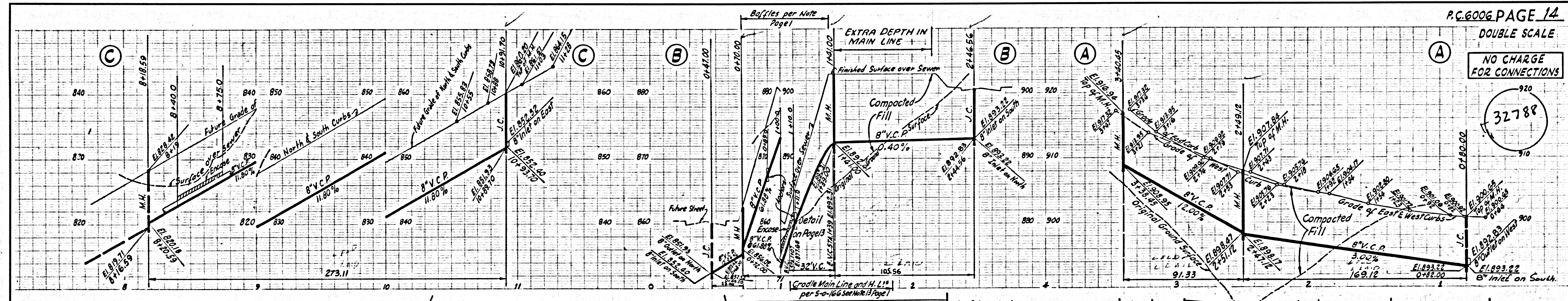
VERTICAL CURVE SCALES  
VERT. 1" = 4'  
HORIZ. 1" = 16'  
(SEE PAGE 14B)



DOUBLE SCALE

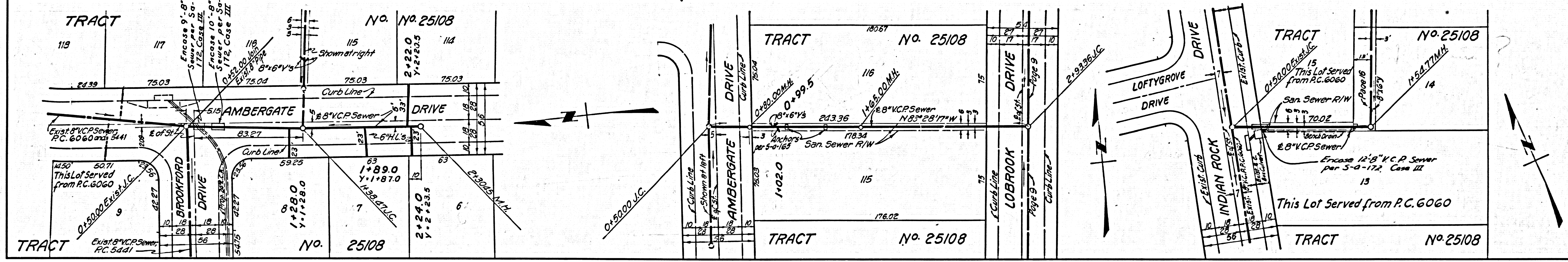
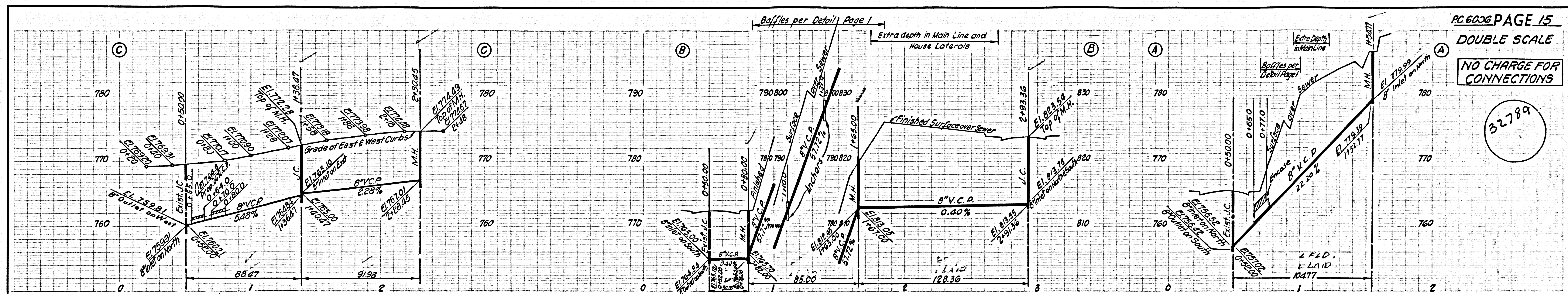
NO CHARGE FOR CONNECTIONS

32788

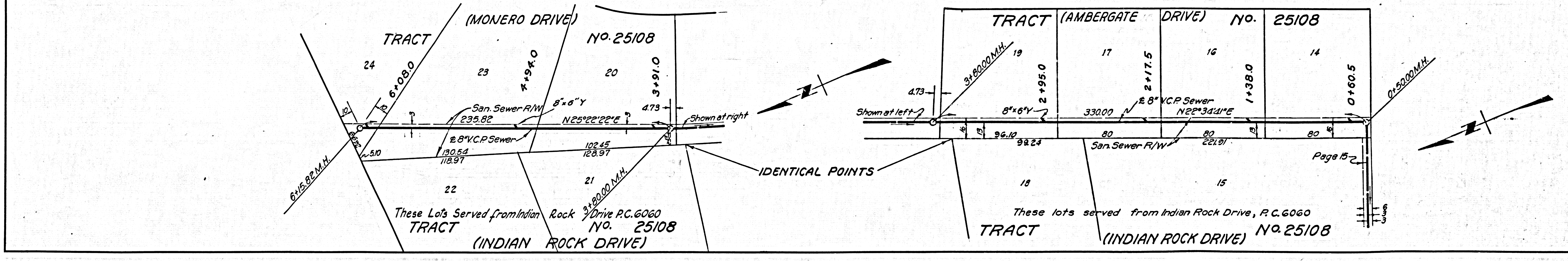
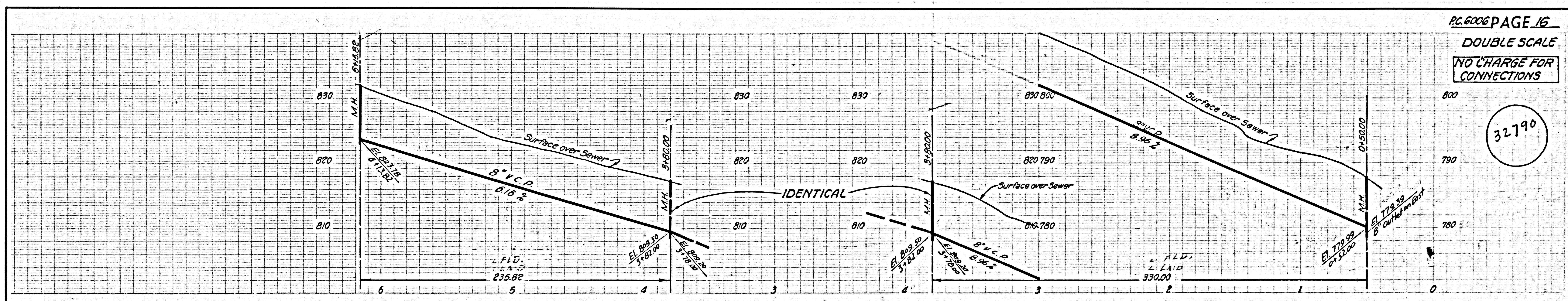




32789



32790





DOUBLE SCALE  
NO CHARGE  
FOR CONNECTIONS

32791

