

TRACT NO 26544

PRIVATE CONTRACT NO. 6008

W.S. 38

3 SHEETS; 5 PAGES

SCALE: VERT. 1"=4' HORIZ. 1"=40' OCTOBER, 1961

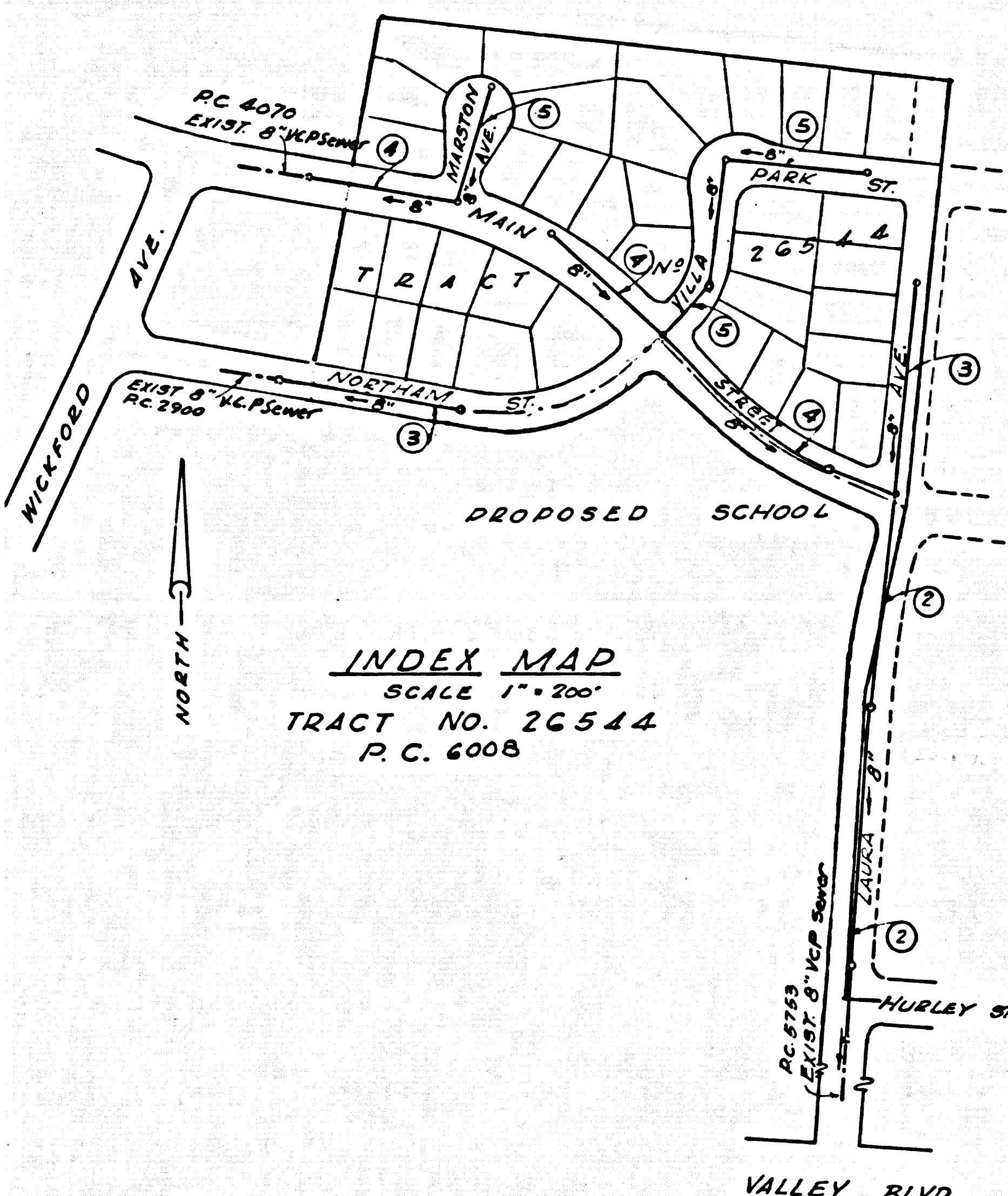
PREPARED IN THE OFFICES OF

JOHN S. GREGORY COMPANY

By: John S. Gregory REG. C. E. NO. 6353

FOR LEGEND SEE PLAN NO. S-A-64

31711



INDEX MAP  
SCALE 1"=200'  
TRACT NO. 26544  
P. C. 6008

BENCH MARK:  
S.G. 1742 Elev. 370.284 1955 Adj.  
Lead & Bench Nail in North Conc. Headwall of  
D.R. & 75' So. of & of Valley Blvd. and 150'  
West of E. of Wickford Ave.  
Baseline Quad.

COLLECT CHARGES  
AS INDICATED  
77.77 C. District 1-2942

NOTES:

- 1. PROVIDE STAKES ON THE PROPERTY LINE OR PROPERTY LINES PRODUCED AT RIGHT ANGLES TO THE SEWER LINE AT THE CENTER LINE OF EACH MANHOLE.
- 2. NO REPRESENTATIVE OF THE CITY ENGINEER WILL SURVEY OR LAY OUT ANY PORTION OF THE WORK.
- 3. THE OWNER OR HIS AUTHORIZED REPRESENTATIVE SHALL FURNISH THE CITY ENGINEER WITH GRADE SHEETS AND STATIONING FOR ALL HOUSE LATERALS AND Y BRANCHES AND SHALL PROVIDE STAKES FOR THEM AT THEIR PROPER LOCATIONS WITH STATIONING PLAINLY MARKED. ANY CHANGE IN LOCATION SHALL BE REQUESTED IN WRITING BY THE OWNER OR HIS REPRESENTATIVE.
- 4. THE PRIVATE ENGINEER SHALL FURNISH THE HOUSE LATERAL DEPTH AT THE PROPERTY LINE BELOW THE TOP OF CURB ELEVATION FOR EACH HOUSE LATERAL ON THE GRADE SHEET.
- 5. NO REVISIONS SHALL BE MADE IN THESE PLANS WITHOUT THE APPROVAL OF THE CITY ENGINEER.
- 6. USE STANDARD MANHOLE FRAMES AND COVERS, 5-117, 1" DIA. AS NOTED.
- 7. USE EXTRA STRENGTH PIPE, ALL PIPE STANDARD DEPTH EXCEPT AS NOTED.
- 8. USE CEMENT MORTAR OR "WEDGE-LOCK" OR "SPEED-SEAL" FOR ALL T.J.C. JOINTS PER SPECS, SECS. 14 & 44.
- 9. RESURFACE ALL TRENCH WITHIN PAVED AREA TO MEET L.A. COUNTY ROAD DEPT. OR CALIF. STATE HIGHWAY REQUIREMENTS IN ACCORDANCE WITH PERMITS.
- 10. ENCASE FOUR FEET OF SEWER AT POINTS OF INTERFERENCE WITH POLES, CASE III, 5-172.
- 11. HOUSE LATERALS TO BE CONSTRUCTED WITH INVERTS AT PROPERTY LINE 6 FEET BELOW CURB GRADE EXCEPT AS NOTED.
- 12. MANHOLES SHALL BE BRICK SEWER STRUCTURES PER S-104A PRECAST CONCRETE MANHOLES PER S-104B'S OR S-104C'S MAY BE USED IN AUTOMOBILE LOCATIONS APPROVED BY THE COUNTY ENGINEER.
- 13. FOR ALLOWABLE LEAKAGE TEST USE FORMULA NO. 1, SPECS, SEC. 14.
- 14. MANHOLE TOPS IN UNIMPROVED RIGHTS-OF-WAY TO BE SIX INCHES ABOVE FINISHED GRADE.
- 15. THE CONTRACTOR SHALL NOTIFY THE CONSTRUCTION DIVISION BY TELEPHONE, MADISON 3-4147, EXT. 8558 AT LEAST TWENTY-FOUR HOURS BEFORE STARTING ANY WORK UNDER THIS CONTRACT.
- 16. STANDARD SPECIFICATIONS DATED OCT. 25 1961 APPLY IN THE CONSTRUCTION OF THIS PROJECT.

NO CONNECTIONS FOR THE DISPOSAL OF INDUSTRIAL WASTES SHALL BE MADE TO SEWERS SHOWN ON THESE DRAWINGS WITHOUT WRITTEN PERMISSION FROM THE CHIEF ENGINEER AND GENERAL MANAGER OF THE COUNTY SANITATION DISTRICTS.

NOTE:  
GRADES TO WHICH THIS IMPROVEMENT IS TO BE CONSTRUCTED ARE SHOWN ON PLANS AND PROFILES. GRADE POINTS FOR TOP OF CURBS, CENTER LINE OF STREETS, OR CENTER LINE OF ALLEYS ARE SHOWN BY CIRCLES ON PROFILES AT ALL POINTS BETWEEN DESIGNATED POINTS THE GRADE SHALL BE ESTABLISHED SO AS TO CONFORM TO A STRAIGHT LINE DRAWN BETWEEN SAID DESIGNATED POINTS.  
ELEVATIONS ARE IN FEET ABOVE U.S.C. & G.S. SEA LEVEL DATUM OF 1929.  
THIS DRAWING AND THE DATA HEREON ARE HEREBY MADE A PART OF THE SPECIFICATIONS OF THE CITY ENGINEER AND SHALL BE PROSECUTED ONLY IN THE PRESENCE OF THE CITY ENGINEER.  
BEFORE WORK CAN BE STARTED, THE CONTRACTOR MUST OBTAIN A PERMIT TO EXCAVATE IN CITY STREETS FROM THE L.A. COUNTY ROAD DEPT., DISTRICT OFFICE NO. 1, AND PAY A FEE TO THE CITY OF LA PUENTE 1675 E. MAIN ST. LA PUENTE, CALIF. SUFFICIENT TO COVER THE COST OF CONSTRUCTION INSPECTION AND RECORD PLANS.  
APPROVAL OF THIS PLAN BY THE CITY OF LA PUENTE DOES NOT CONSTITUTE A REPRESENTATION AS TO THE ACCURACY OF THE LOCATION OR THE EXISTENCE OR NON-EXISTENCE OF ANY UNDERGROUND UTILITY PIPE, OR STRUCTURE WITHIN THE LIMITS OF THIS PROJECT. THIS NOTE APPLIES TO ALL PAGES.  
IF WORK IS TO BE DONE IN A STATE HIGHWAY, A PERMIT MUST BE OBTAINED FROM THE STATE OF CALIFORNIA, DIVISION OF HIGHWAYS, 120 SOUTH SPRING STREET.

CITY OF LA PUENTE, CALIFORNIA

APPROVED, JOHN A. LAMBIE, CITY ENGINEER APPROVED, A. B. PARKMAN, CHIEF ENGINEER

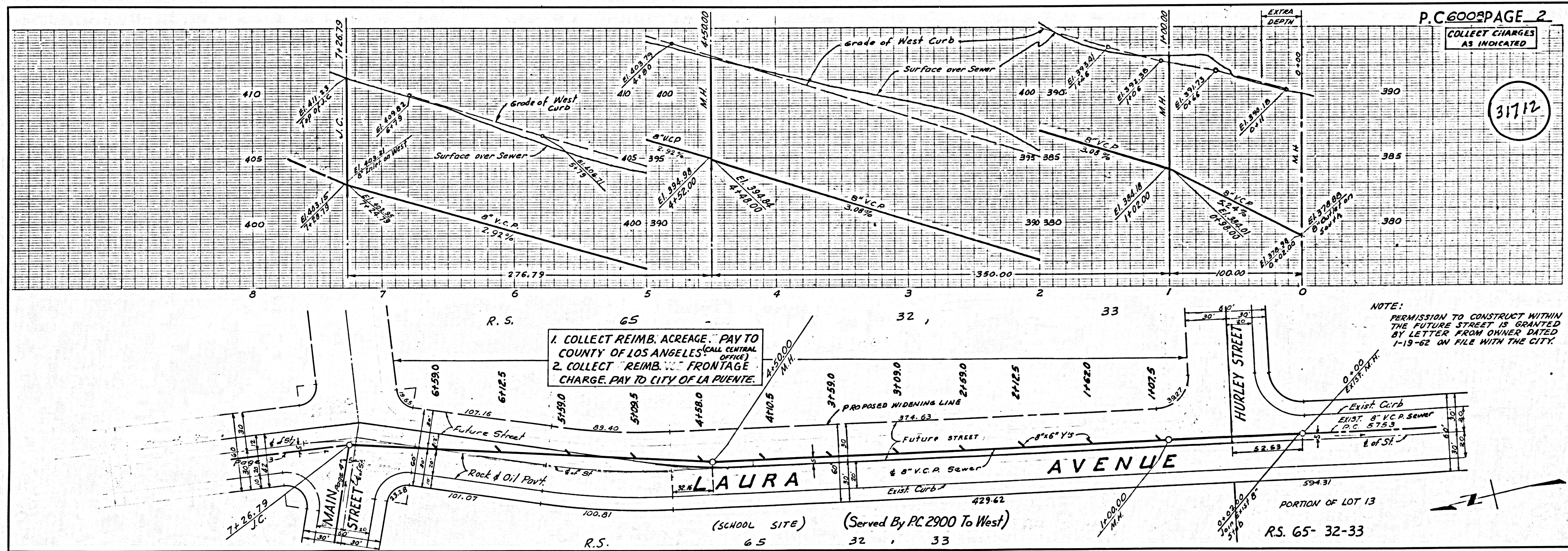
By: Richard C. Nelson ASST. SANITATION ENGINEER By: J. H. Matthews OFFICE ENGINEER

CHECKED BY: W. W. Underhill OFFICE OF CITY ENGINEER, REG. C. E. NO. 2406

submitted W. W. Underhill 1-30-62 SAN DIMAS REGIONAL ENGINEER

CITY OF LA PUENTE

APPROVED [Signature] 1-17-62 CITY MANAGER



P.C. 6008 PAGE 2  
COLLECT CHARGES AS INDICATED

31712

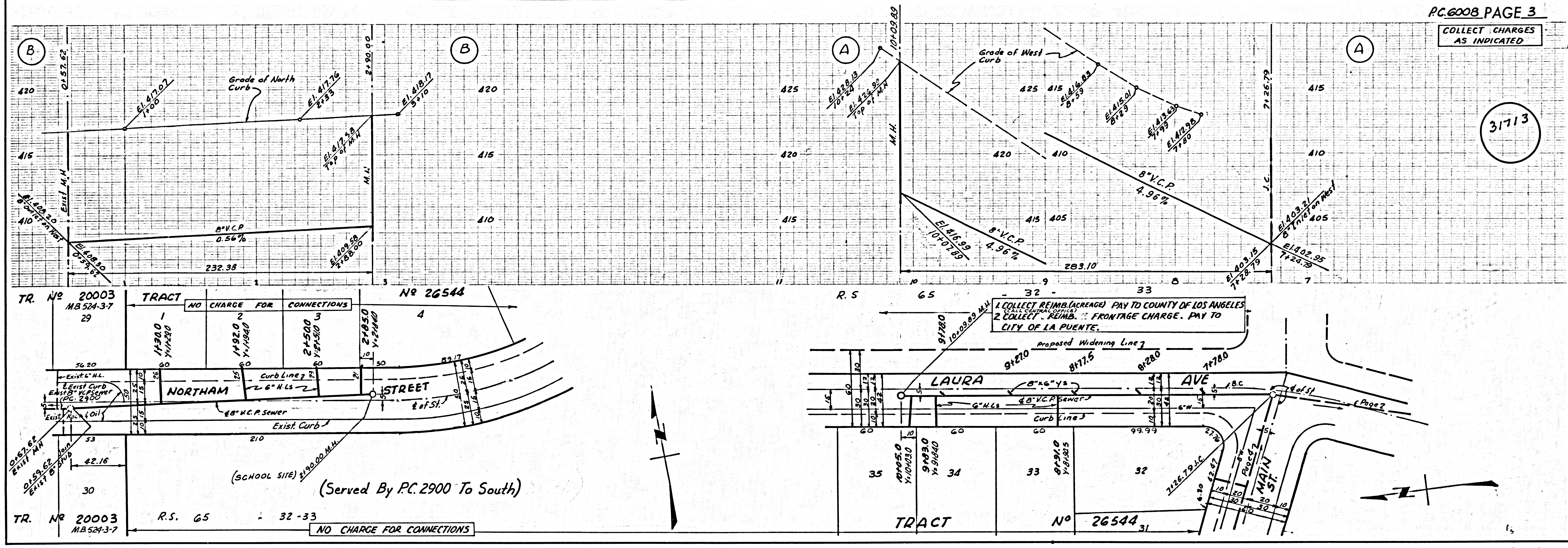
1. COLLECT REIMB. ACREAGE - PAY TO COUNTY OF LOS ANGELES (CALL CENTRAL OFFICE)  
2. COLLECT REIMB. FRONTAGE CHARGE - PAY TO CITY OF LA PUENTE

NOTE:  
PERMISSION TO CONSTRUCT WITHIN THE FUTURE STREET IS GRANTED BY LETTER FROM OWNER DATED 1-15-62 ON FILE WITH THE CITY.



COLLECT CHARGES AS INDICATED

31713



NO CHARGE FOR CONNECTIONS

31714

