

BENCH MARK: Whittier Quad Elev. 249.254  
 S.G. 1537 Adj. 1955  
 L&T in N.W. edge of 4' concrete walk of building  
 ±75° S. & Rush Street ±31° E & Central Avenue.

SOUTH EL MONTE BLDG. DIST. NO. 5.04

PROFILE ALIGNMENT AND GRADE OF P.C. 6009

SANITARY SEWERS PAGE 1

TO BE CONSTRUCTED IN

RIGHT OF WAY EAST OF HOYT AVENUE

PRIVATE CONTRACT NO. 6009

W.S. 37

1 SHEETS; 2 PAGES

SCALE: VERT. 1" = 4' HORIZ. 1" = 40' AUGUST, 1961

PREPARED IN THE OFFICES OF  
 ADAMS and ELLS  
 CIVIL ENGINEERS

By: *William J. Adams* REG. C. E. NO. 10890

FOR LEGEND SEE PLAN NO. S-A-64

31575

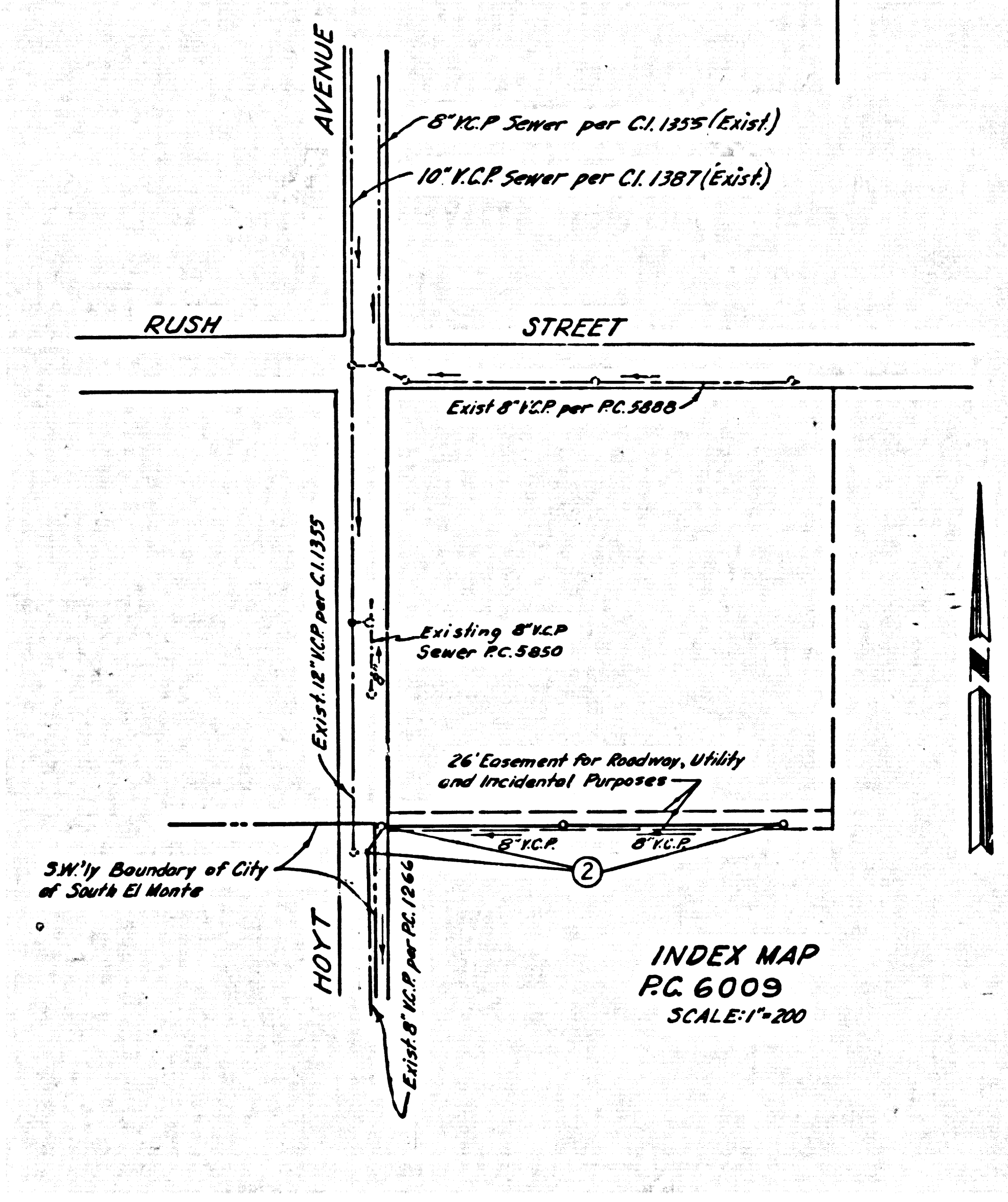
- NOTES:
1. PROVIDE STAKES ON THE PROPERTY LINE OR PROPERTY LINES PRODUCED AT RIGHT ANGLES TO THE SEWER LINE AT THE CENTER LINE OF EACH MANHOLE.
  2. NO REPRESENTATIVE OF THE CITY ENGINEER WILL SURVEY OR LAY OUT ANY PORTION OF THE WORK.
  3. THE OWNER OR HIS AUTHORIZED REPRESENTATIVE SHALL FURNISH THE CITY ENGINEER WITH GRADE SHEETS AND STATIONING FOR ALL HOUSE LATERALS AND Y BRANCHES AND SHALL PROVIDE STAKES FOR THEM AT THEIR PROPER LOCATIONS WITH STATIONING PLAINLY MARKED. ANY CHANGE IN LOCATION SHALL BE REQUESTED IN WRITING BY THE OWNER OR HIS REPRESENTATIVE.
  4. THE PRIVATE ENGINEER SHALL FURNISH THE HOUSE LATERAL DEPTH AT THE PROPERTY LINE BELOW THE TOP OF CURB ELEVATION FOR EACH HOUSE LATERAL ON THE GRADE SHEET.
  5. NO REVISIONS SHALL BE MADE IN THESE PLANS WITHOUT THE APPROVAL OF THE COUNTY ENGINEER.
  6. USE STANDARD MANHOLE FRAMES AND COVERS, S-117, A.
  7. USE EXTRA STRENGTH PIPE - ALL PIPE IS STANDARD DEPTH.
  8. USE CEMENT MORTAR OR "WEDGE-LOCK" OR "SPEED-SEAL" FOR ALL V.C.P. JOINTS PER SPEC. S. 36 & 41.
  9. RESURFACE ALL TRENCH WITHIN PAVED AREA TO MEET L.A. COUNTY ROAD DEPT. OR CALIF. STATE HIGHWAY REQUIREMENTS IN ACCORDANCE WITH PERMITS.
  10. ENCASE FOUR FEET OF SEWER AT POINTS OF INTERFERENCE WITH POLES, CASE III, S-172.
  11. HOUSE LATERALS TO BE CONSTRUCTED WITH INVERTS AT PROPERTY LINE 6 FEET BELOW 6' OF PRIVATE 8" MANHOLES SHALL BE BRICK SEWER STRUCTURES PER S.E. 104 CONCRET CONCRETE MANHOLES PER S-104 OR S-105 AND BE MADE AS AN ALTERNATE IN ACCORDANCE WITH THE CITY ENGINEER.
  12. FOR ALLOWABLE LEAKAGE TEST USE FORMULA NO. 1 - SPEC. S. 34.
  13. MANHOLE TOPS IN IMPROVED RIGHTS-OF-WAY TO BE LEVEL WITH FINISHED GRADE.
  14. THE CONTRACTOR SHALL NOTIFY THE CONSTRUCTION DIVISION BY TELEPHONE, MADISON 9-477, EXT. 8794 AT LEAST TWENTY-FOUR HOURS BEFORE STARTING ANY WORK UNDER THIS CONTRACT.
  15. STANDARD SPECIFICATIONS DATED OCTOBER 25, 1961, APPLY IN THE CONSTRUCTION OF THIS PROJECT.

NO CHARGE FOR CONNECTIONS  
*Adams and Ells*

Approved: *James Stewart* Date 10/31/61  
 Industrial Waste Division

NO CONNECTIONS FOR THE DISPOSAL OF INDUSTRIAL WASTES SHALL BE MADE TO SEWERS SHOWN ON THESE DRAWINGS WITHOUT WRITTEN PERMISSION FROM THE CHIEF ENGINEER AND GENERAL MANAGER OF THE COUNTY SANITATION DISTRICTS.

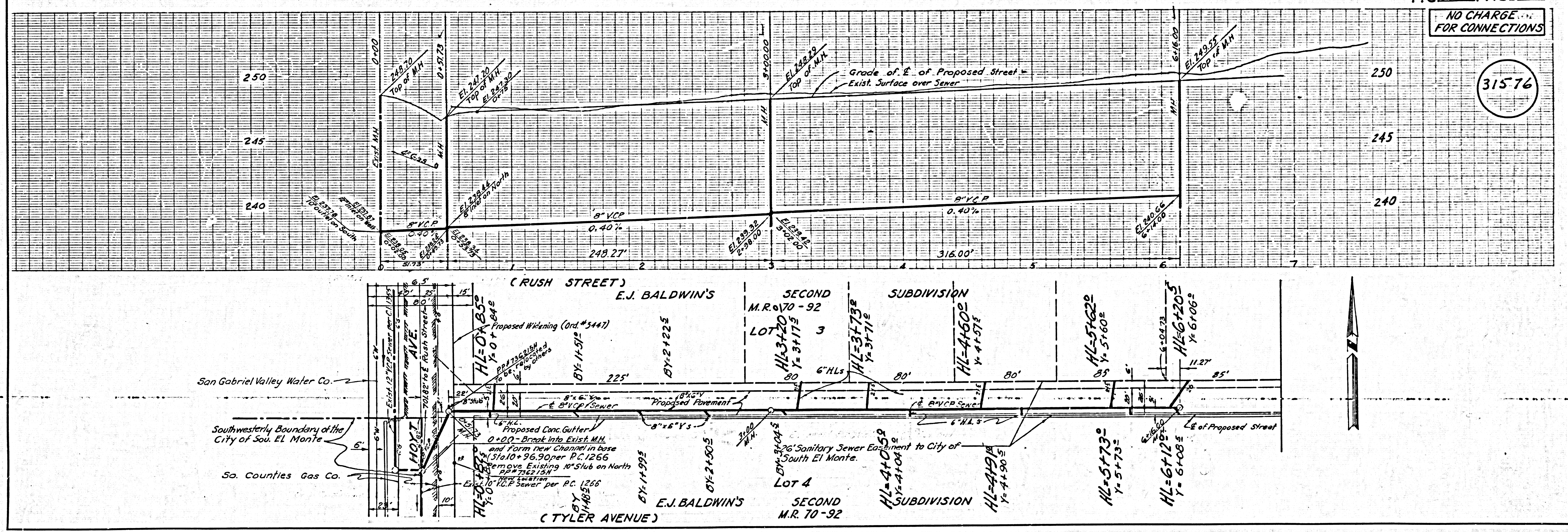
CITY OF SOUTH EL MONTE, CALIFORNIA  
 APPROVED, JOHN A. LAMBIE, CITY ENGINEER APPROVED, JOHN D. MARKHURST, CHIEF ENGINEER  
 CO. SAN. DIST. NO. 13  
 BY: *Richard E. Kuhn* ASST. SANITATION ENGINEER BY: *W. C. Parthum* OFFICE ENGINEER  
 CHECKED BY: *W. C. Parthum* 1-11-62  
 OFFICE OF CITY ENGINEER, REG. C. E. NO. 3486  
 SUBMITTED: *N. F. Brander* SAN GABRIEL VALLEY REGIONAL ENGINEER



P.C. 6009 PAGE 2

NO CHARGE FOR CONNECTIONS

31576



Sealed Inlet on North with brick. Requested by San Dist.

x Indicate end of N.L.s as built per arrangement with Central Office

PC 6009 6/16 E10 HOYT AVENUE

PC 6009 6/16 E10 HOYT AVENUE