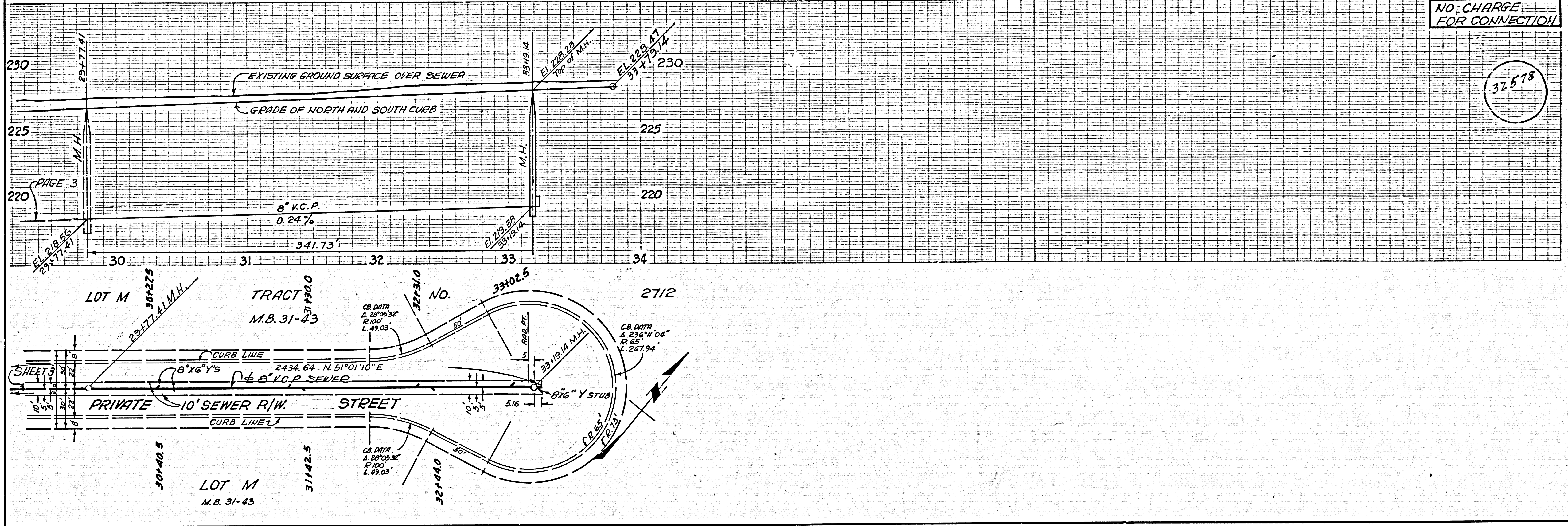
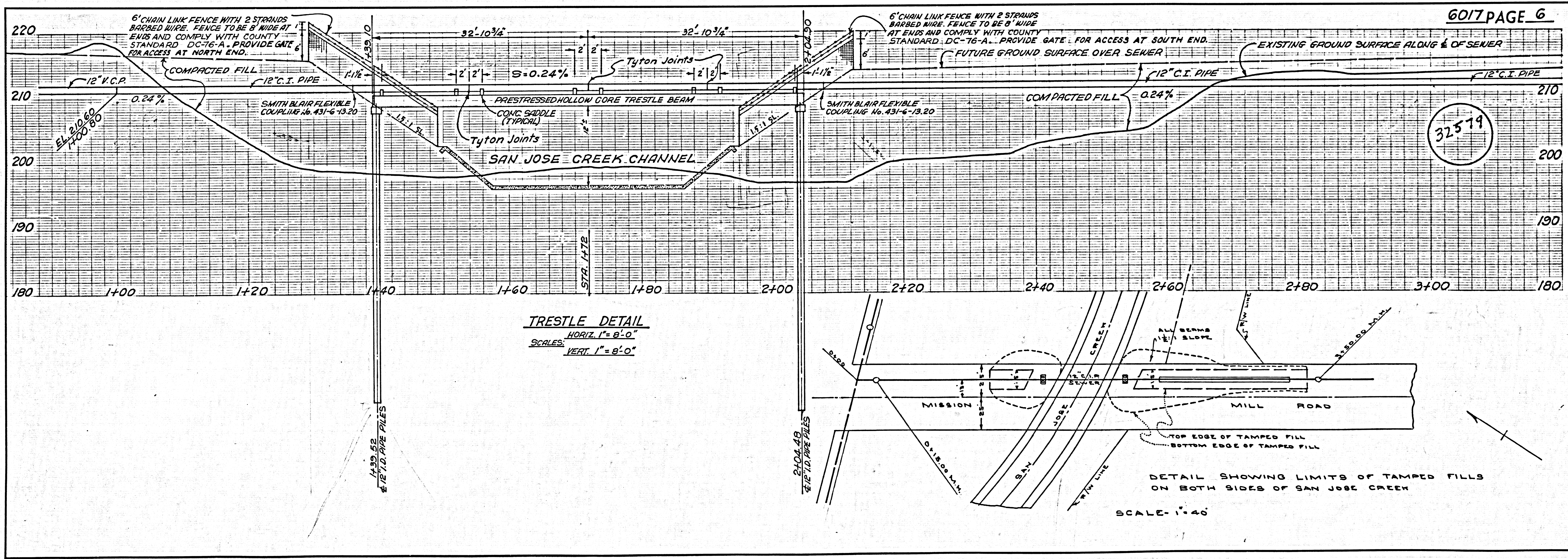


NO CHARGE FOR CONNECTION

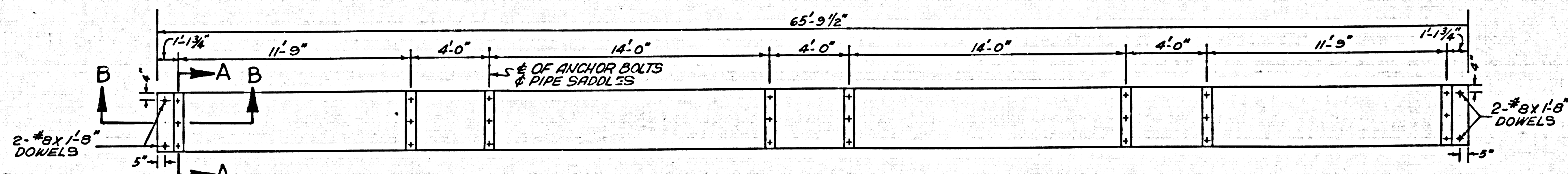
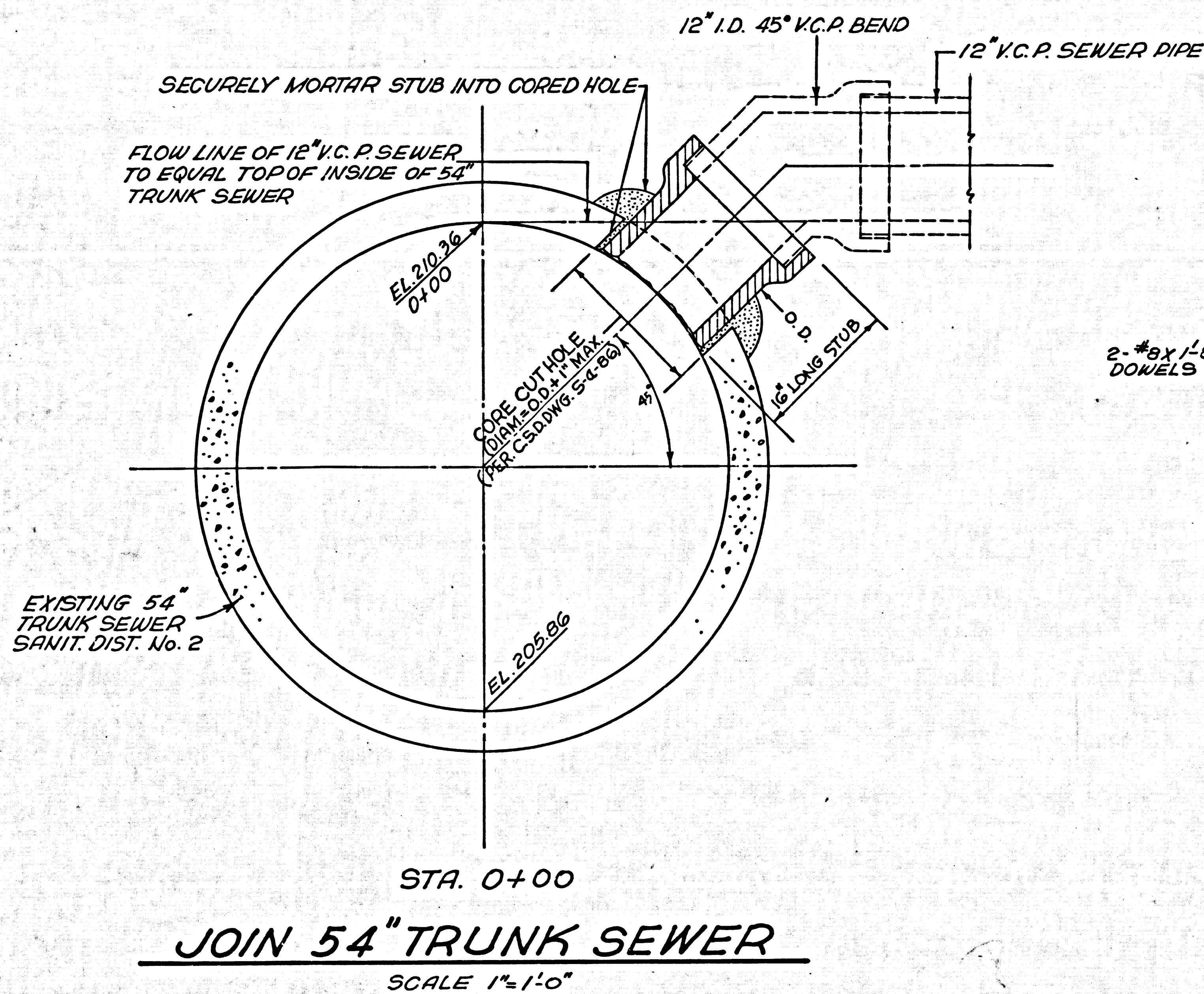
32578



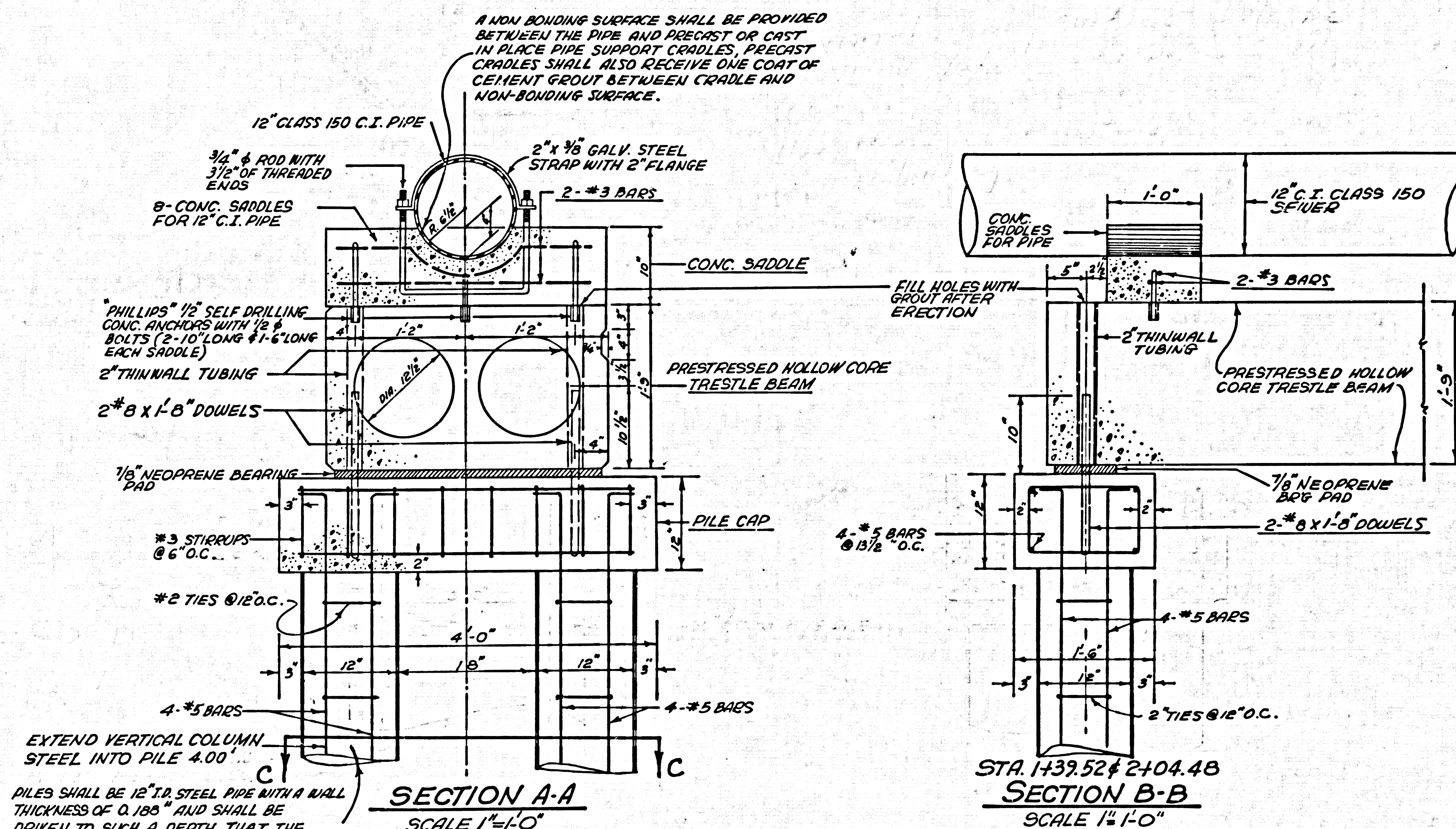
32579



32580



PRESTRESSED HOLLOW CORE TRESTLE BEAM



NOTE: Minimum 28-day strength of concrete for piles, caps, and saddles to be 3000 psi.

PRIVATE CONTRACT No. 6017
CONSTRUCTION DETAILS
FOR
**SEWER IN MISSION MILL ROAD
AND
SANITARY SEWER RIGHT OF WAY**
SHEET 4 OF 4 SHEETS
SCALE: AS SHOWN
JANUARY 1962
COUNTY OF LOS ANGELES
JOHN A. LAMBIE COUNTY ENGINEER
PREPARED IN THE OFFICE
OF
ROSE HILLS MEMORIAL PARK
RE. 1638

NOTE: FOR DETAILS AND CALCULATIONS OF PRESTRESSED HOLLOW CORE TRESTLE BEAM SEE ROCKWIN PRESTRESSED CONCRETE CORR. JOB No. 5921 DATED APRIL 21, 1959 AND JOB No. 6238 DATED JANUARY 8, 1962.