

LENOX BLDG. DIST. NO. 7

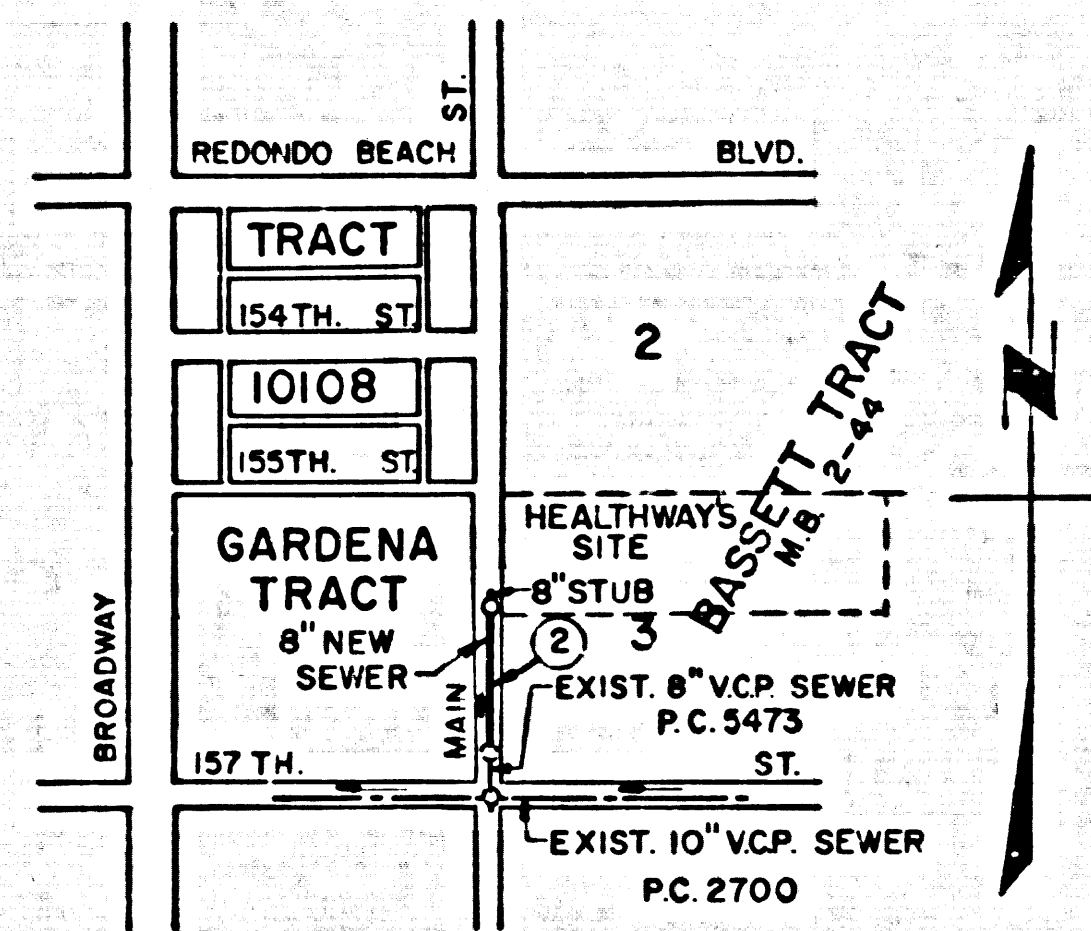
PROFILE ALIGNMENT AND GRADE OF
SANITARY SEWER
 TO BE CONSTRUCTED IN
MAIN STREET
 NORTH OF 157TH. ST.
PRIVATE CONTRACT NO. 6020

P.C. 6020
 PAGE 1
 J.N.0356.80

- NOTES:**
- PROVIDE STAKES ON THE PROPERTY LINE OR PROPERTY LINES PRODUCED AT RIGHT ANGLES TO THE SEWER LINE AT THE CENTER LINE OF EACH MANHOLE.
 - NO REPRESENTATIVE OF THE COUNTY ENGINEER WILL SURVEY OR LAYOUT ANY PORTION OF THIS WORK. THE OWNER OR HIS AUTHORIZED REPRESENTATIVE SHALL FURNISH THE COUNTY ENGINEER WITH GRADE SHEETS AND STATION FOR ALL HOUSE LATERALS AND Y BRANCHES AND SHALL PROVIDE STAKES FOR THEM AT THEIR PROPER LOCATIONS WITH STATIONING PLAINLY MARKED. ANY CHANGE IN LOCATION SHALL BE REQUESTED IN WRITING BY THE OWNER OR HIS REPRESENTATIVE.
 - NO REVISIONS SHALL BE MADE IN THESE PLANS WITHOUT THE APPROVAL OF THE COUNTY ENGINEER.
 - USE STANDARD MANHOLE FRAMES AND COVERS, S-A-117.
 - USE EXTRA STRENGTH PIPE, ALL PIPE IS STANDARD DEPTH.
 - USE CEMENT MORTAR, OR "WEDGE-LOCK" OR "SPEED-SEAL" FOR ALL V.C.P. JOINTS PER SPEC'S. SECTIONS 36 & 40.
 - RESURFACE ALL TRENCH WITHIN PAVED AREA TO MEET L. A. COUNTY ROAD DEPT., OR CALF. STATE HIGHWAY DEPT., REQUIREMENTS IN ACCORDANCE WITH PERMITS.
 - ENCASE FOUR FEET OF SEWER AT POINTS OF INTERFERENCE WITH POLES, S-a-172, CASE III.
 - HOUSE LATERALS TO BE CONSTRUCTED WITH INVERT AT PROPERTY LINE 6" BELOW CENTER LINE GRADE OF STREET.
 - ALL STRUCTURES SHALL BE BRICK SEWER STRUCTURES, S-A-104.
 - FOR ALLOWABLE LEAKAGE TEST USE FORMULA NO. 1 SPEC'S, SEC. 54.
 - MANHOLE TOPS IN UNIMPROVED RIGHT-OF-WAY TO BE 6" ABOVE FINISHED GRADE.
 - SPECIFICATIONS DATED OCT. 25, 1961 APPLY TO THE CONSTRUCTION OF THIS PROJECT.
 - THE CONTRACTOR SHALL NOTIFY THE CONSTRUCTION DIVISION BY TELEPHONE, MADISON 9-4747 EXT. 81551 AT LEAST TWENTY-FOUR HOURS BEFORE STARTING ANY WORK UNDER THIS CONTRACT.

B.M. (L.A. County Road Dept.)
 SY 3885 L & N Ctr. Curb Return
 NE Cor. 155TH & Broadway
 Gardena 1955
 Elev. 47.080

CONNECTION CHARGES AS INDICATED
L. Carter 1-19-62



INDEX MAP
 SCALE: 1"=60'
 P.C. 6020

W.S. 26
 1 SHEET, 2 PAGES
 SCALE: VERT 1"=4'
 HORIZ 1"=40'
 AUGUST, 1961
 PREPARED IN THE OFFICES OF
KOEBIG & KOEBIG
 ENGINEERING & ARCHITECTURE
 L. HARRISON NEWPORT REG. C. E. NO. C 9474
 FOR LEGEND SEE PLAN NO. S-A-64

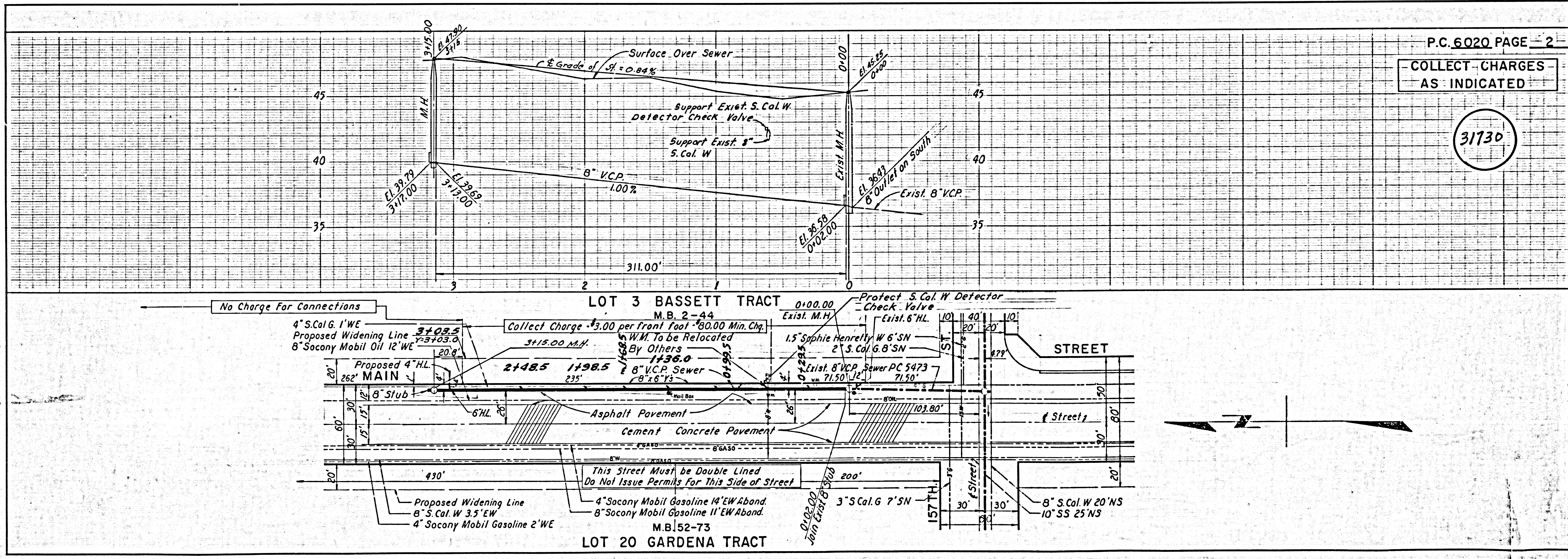
NOTE:
 GRADES TO WHICH THIS IMPROVEMENT IS TO BE CONSTRUCTED ARE SHOWN ON PLANS AND PROFILES. GRADE POINTS FOR TOP OF CURBS, CENTER LINE OF STREETS, OR CENTER LINE OF ALLEYS ARE SHOWN BY CIRCLES ON PROFILES AT ALL POINTS BETWEEN DESIGNATED POINTS THE GRADE SHALL BE ESTABLISHED SO AS TO CONFORM TO A STRAIGHT LINE DRAWN BETWEEN SAID DESIGNATED POINTS.
 ELEVATIONS ARE IN FEET ABOVE U.S.C. & G.S. SEA LEVEL DATUM OF 1929.
 THIS DRAWING AND THE DATA HEREON ARE HEREBY MADE A PART OF THE SPECIFICATIONS.
 WORK SHALL BE CONSTRUCTED ACCORDING TO SPECIFICATION ON FILE IN THE OFFICE OF THE COUNTY ENGINEER AND SHALL BE PROSECUTED ONLY IN THE PRESENCE OF THE COUNTY ENGINEER.
 BEFORE WORK CAN BE STARTED, THE CONTRACTOR MUST OBTAIN A PERMIT TO EXCAVATE IN COUNTY STREETS FROM L. A. COUNTY ROAD DEPT., DISTRICT NO. 3 & PAY A FEE TO THE COUNTY ENGINEER, ROOM 310 COUNTY ENGINEER BUILDING, 108 W. 2ND. STREET SUFFICIENT TO COVER THE COST OF CONSTRUCTION INSPECTION AND RECORD PLANS.
 APPROVAL OF THIS PLAN BY THE COUNTY OF LOS ANGELES DOES NOT CONSTITUTE A REPRESENTATION AS TO THE ACCURACY OF THE LOCATION OF OR THE EXISTENCE OR NON-EXISTENCE OF ANY UNDERGROUND UTILITY PIPE, OR STRUCTURE WITHIN THE LIMITS OF THIS PROJECT. THIS NOTE APPLIES TO ALL PAGES.
 IF WORK IS TO BE DONE IN A STATE HIGHWAY, A PERMIT MUST BE OBTAIN FROM THE STATE OF CALIFORNIA, DIVISION OF HIGHWAYS, 120 SOUTH SPRING STREET.

COUNTY OF LOS ANGELES-CALIFORNIA

APPROVED, JOHN A. LAMBIE, COUNTY ENGINEER
 APPROVED, J.D. PARKHURST, CHIEF ENGINEER
 BY *R. E. Kelen* ASSTANT SANITATION ENGINEER
 BY *H. P. Schumers* OFFICE ENGINEER
 CHECKED BY *J. K. Diller*
 OFFICE OF COUNTY ENGINEER, REG. C. E. NO. 5414
 SUBMITTED BY *J. C. Lanning*
 SANITATION ENGINEER

APPROVED *J. P. Stewart* 1-19-1962
 INDUSTRIAL WASTE DIVISION

NO CONNECTIONS FOR THE DISPOSAL OF INDUSTRIAL WASTES SHALL BE MADE TO SEWERS SHOWN ON THESE DRAWINGS WITHOUT WRITTEN PERMISSION FROM THE CHIEF ENGINEER AND GENERAL MANAGER OF THE COUNTY SANITATION DISTRICTS.



P.C. 6020 PAGE 2
 COLLECT CHARGES AS INDICATED

31730

LOT 3 BASSETT TRACT
 M.B. 2-44
 0+00.00
 Exist. M.H.
 Protect 5. Cal. W. Detector Check Valve
 Exist. 6" HL
 1.5 Sophie Henretty W 6" SN
 2" S. Cal. G. 8" SN
 Exist. 8" V.C.P. Sewer PC 5473
 71.50'

LOT 20 GARDENA TRACT
 M.B. 52-73
 0+00.00
 Join Exist. 8" V.C.P. Sewer
 3" S. Cal. G. 7" SN
 157TH
 30'
 30'
 8" S. Cal. W. 20" NS
 10" SS 25" NS

Proposed Widening Line
 8" S. Cal. W. 3.5' EW
 4" Socony Mobil Gasoline 2' WE

4" S. Cal. G. 1' WE
 Proposed Widening Line
 7-57+03.0
 8" Socony Mobil Oil 12' WE
 20.6'

Proposed 4" HL
 262' MAIN
 8" S. Stub
 6" HL

Asphalt Pavement
 Cement Concrete Pavement

This Street Must Be Double Lined
 Do Not Issue Permits For This Side of Street

4" Socony Mobil Gasoline 14' EW Aband.
 8" Socony Mobil Gasoline 11' EW Aband.

Collect Charge - \$3.00 per front foot - \$60.00 Min. Chg.
 3+15.00 M.H.
 W.M. To be Relocated By Others
 1+36.0
 2+48.5
 1+98.5
 8" V.C.P. Sewer
 8" x 6" Y's

4' x 6" Y's
 8" V.C.P. Sewer
 71.50'

8" V.C.P. 1.00%
 311.00'

Surface Over Sewer
 C & G Grade of St. = 0.84%

Support Exist. 5. Cal. W. Detector Check Valve
 Support Exist. 8" 5. Cal. W.

El. 39.79
 3+17.00
 El. 39.88
 3+17.00
 El. 36.28
 0+02.00
 El. 47.08
 0+00.00
 El. 47.08
 0+00.00