

TRACT N<sup>o</sup> 27304  
PRIVATE CONTRACT NO. 6029

W.S. 37  
1 SHEETS; 7 PAGES

SCALE: VERT. 1"=4' HORIZ. 1"=40'  
October, 1961  
PREPARED IN THE OFFICES OF

DUTCH HOLZHAUER & ASSOCIATES

By: *W. C. Poindexter*  
REG. C. E. NO. 10210

FOR LEGEND SEE PLAN NO. S-A-64

NOTE:  
GRADES TO WHICH THIS IMPROVEMENT IS TO BE CONSTRUCTED ARE SHOWN ON PLANS AND PROFILES. GRADE POINTS FOR TOP OF CURBS, CENTER LINE OF STREETS, OR CENTER LINE OF ALLEYS ARE SHOWN BY CIRCLES ON PROFILES. AT ALL POINTS BETWEEN DESIGNATED POINTS THE GRADE SHALL BE ESTABLISHED SO AS TO CONFORM TO A STRAIGHT LINE DRAWN BETWEEN SAID DESIGNATED POINTS.  
ELEVATIONS ARE IN FEET ABOVE U.S.C. & G.S. SEA LEVEL DATUM OF 1929.  
THIS DRAWING AND THE DATA HEREON ARE HEREBY MADE A PART OF THE SPECIFICATIONS.  
WORK SHALL BE CONSTRUCTED ACCORDING TO SPECIFICATIONS ON FILE IN THE OFFICE OF THE COUNTY ENGINEER AND SHALL BE PROSECUTED ONLY IN THE PRESENCE OF THE COUNTY ENGINEER.  
BEFORE WORK CAN BE STARTED THE CONTRACTOR MUST OBTAIN A PERMIT TO EXCAVATE IN COUNTY STREETS FROM THE L.A. COUNTY ROAD DEPT., DISTRICT OFFICE NO. 1, AND FROM A PER. TO THE COUNTY ENGINEER, ROOM 310 214 COUNTY ENGINEER BLDG., 100 N. 2<sup>nd</sup> ST., LOS ANGELES, CALIF. SUFFICIENT TO COVER THE COST OF CONSTRUCTION INSPECTION AND RECORD PLANS.  
APPROVAL OF THIS PLAN BY THE COUNTY OF LOS ANGELES DOES NOT CONSTITUTE A REPRESENTATION AS TO THE ACCURACY OF THE LOCATION OF OR THE EXISTENCE OR NON-EXISTENCE OF ANY UNDERGROUND UTILITY PIPE, OR STRUCTURE WITHIN THE LIMITS OF THIS PROJECT. THIS NOTE APPLIES TO ALL PAGES.  
IF WORK IS TO BE DONE IN A STATE HIGHWAY, A PERMIT MUST BE OBTAINED FROM THE STATE OF CALIFORNIA, DIVISION OF HIGHWAYS, 128 SOUTH SPRING STREET.

COUNTY OF LOS ANGELES, CALIFORNIA

APPROVED, JOHN A. LAMBIE, COUNTY ENGINEER APPROVED, J. J. MARRAMBA, CHIEF ENGINEER

By: *W. C. Poindexter* SANITATION ENGINEER By: *J. J. Maramba* OFFICE ENGINEER

CHECKED BY: *J. B. Dwyer* 11-20-61 OFFICE OF COUNTY ENGINEER, REG. C. E. NO. \_\_\_\_\_

SUBMITTED: *W. C. Poindexter* 11-22-61 SAN DIMAS REGIONAL ENGINEER

BENCH MARK:  
S<sup>o</sup> 1502; 187 NEAR N.W. COR. OF CONC. DRIVE TO HOUSE "14800 PALM AVE." @ S.E. COR. 7 1/2' x 100' E. 1/4 3 1/2' S. E. INT. (WHITTIER QUA) 1955 ADJ.  
ELEV. 400.85'

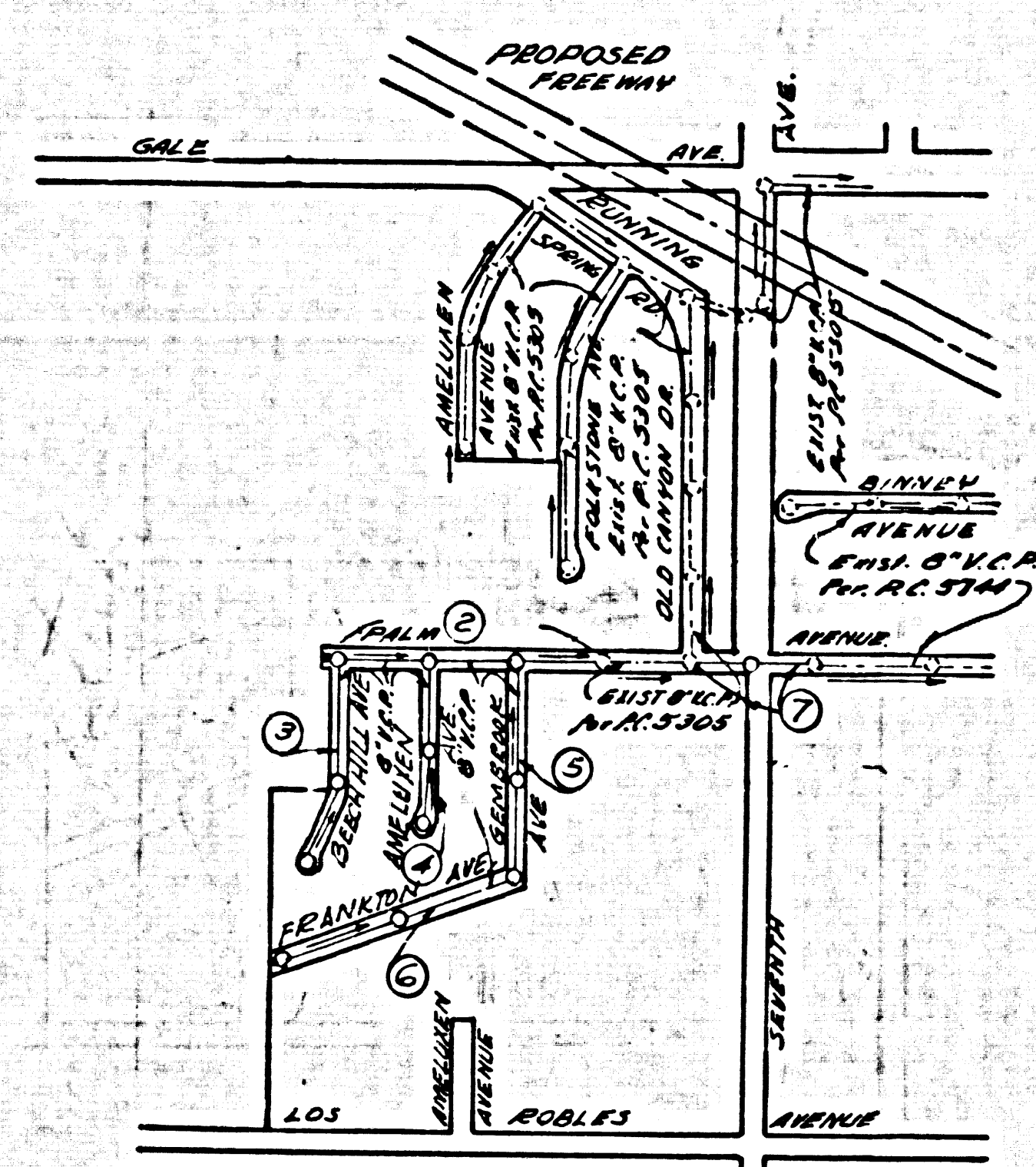
PRIVATE ENGINEER'S NOTICE TO CONTRACTOR

The existence and location of any underground utility pipes or structures shown on these plans were obtained by a search of the available records. To the best of our knowledge there are no existing utilities or structures except as shown on these plans. The contractor is required to take due precautionary measures to protect the utility lines and structures shown and any other lines and structures not of record as shown on these plans.

*W. C. Poindexter*  
B.C.E. NO. 8418

- NOTES:
1. PROVIDE STAKES ON THE PROPERTY LINE OR PROPERTY LINES PRODUCED AT RIGHT ANGLES TO THE SEWER LINE AT THE CENTER LINE OF EACH MANHOLE.
  2. NO REPRESENTATIVE OF THE COUNTY ENGINEER WILL SURVEY OR LAY OUT ANY PORTION OF THE WORK.
  3. THE OWNER OR HIS AUTHORIZED REPRESENTATIVE SHALL FURNISH THE COUNTY ENGINEER WITH GRADE SHEETS AND STATIONING FOR ALL HOUSE LATERALS AND Y BRANCHES AND SHALL PROVIDE STAKES FOR THEM AT THEIR PROPER LOCATIONS WITH STATIONING PLAINLY MARKED. ANY CHANGE IN LOCATION SHALL BE REQUESTED IN WRITING BY THE OWNER OR HIS REPRESENTATIVE.
  4. THE PRIVATE ENGINEER SHALL FURNISH THE HOUSE LATERAL DEPTH AT THE PROPERTY LINE BELOW THE TOP OF CURB ELEVATION FOR EACH HOUSE LATERAL ON THE GRADE SHEET.
  5. NO REVISIONS SHALL BE MADE IN THESE PLANS WITHOUT THE APPROVAL OF THE COUNTY ENGINEER.
  6. USE STANDARD MANHOLE FRAMES AND COVERS, 5'-8" EXCEPT AS NOTED.
  7. USE EITHER STRENGTH PIPE ALL PIPE STANDARD DEPTH EXCEPT AS NOTED.
  8. USE CEMENT MORTAR OR "WEDGELOCK" OR "SPREAD-SEAL" FOR ALL V.E.P. JOINTS PER SPEC'S, SECS. M & M.
  9. RESURFACE ALL TRENCH WITHIN PAVED AREA TO MEET L.A. COUNTY ROAD DEPT. OR CALIF. STATE HIGHWAY REQUIREMENTS IN ACCORDANCE WITH PERMITS.
  10. ENCASE FOUR FEET OF SEWER AT POINTS OF INTERFERENCE WITH POLES, CASE M. S-172.
  11. HOUSE LATERALS TO BE CONSTRUCTED WITH INTERIETS AT PROPERTY LINE 6 FEET BELOW CURB GRADE.
  12. ALL STRUCTURES SHALL BE BRICK SEWER STRUCTURES, S-104, SPEC'S, SEC. 54.
  13. FOR ALLOWABLE LEAKAGE TEST USE FORMULA NO. \_\_\_\_\_ SPEC'S, SEC. 54.
  14. MANHOLE TOPS IN UNIMPROVED RIGHTS-OF-WAY TO BE SIX INCHES ABOVE FINISHED GRADE.
  15. THE CONTRACTOR SHALL NOTIFY THE CONSTRUCTION DIVISION BY TELEPHONE, MADISON 8-4749, AT LEAST TWENTY-FOUR HOURS BEFORE STARTING ANY WORK UNDER THIS CONTRACT.
  16. STANDARD SPECIFICATIONS DATED OCT. 1, 1961 APPLY IN CONSTRUCTION OF THIS PROJECT.

COLLECT CHARGES AS INDICATED  
*W. C. Poindexter* 11-21-61



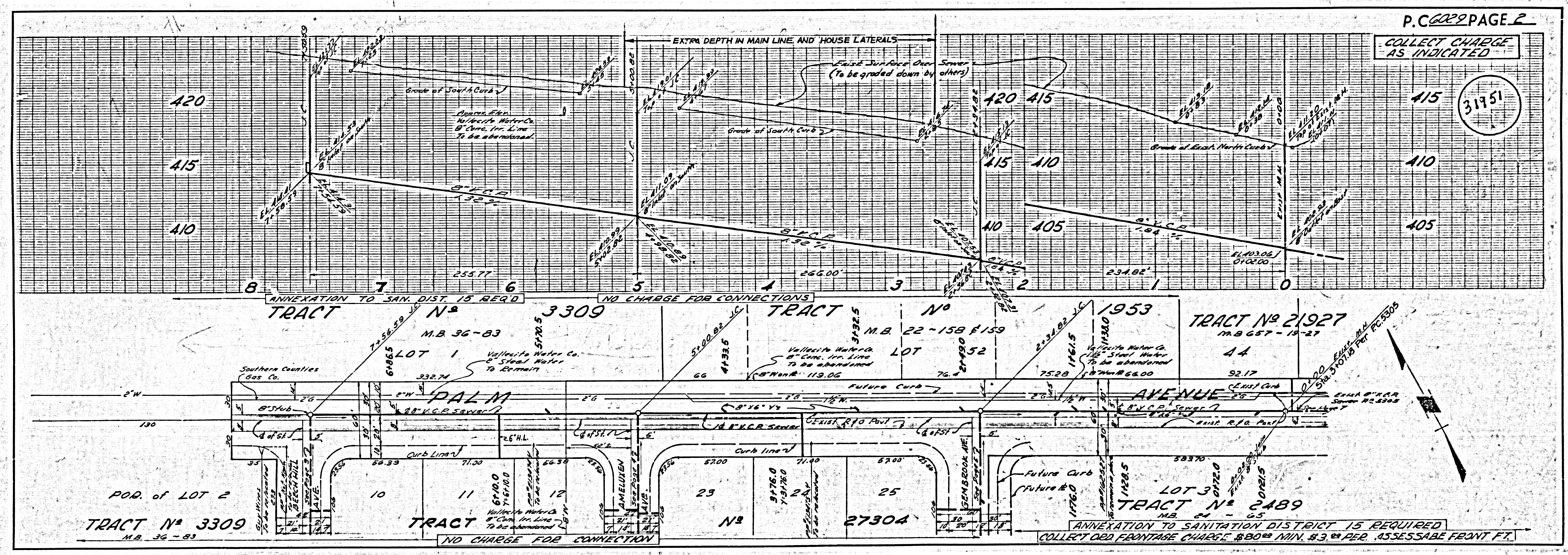
INDEX MAP  
TRACT N<sup>o</sup> 27304  
SCALE 1"=400'  
P.C. 6029

REVISION:  
Page 3 Revised street and sewer grades on Beech Hill Ave. Sta 1100.00 to Sta 618.88  
Page 7 Revised sewer on Palm Ave. Sta 40118.40 to Sta 43+83.30

By: *W. C. Poindexter* DATE: 5-20-62  
San Dimas Regional Engineer

REVISION:  
Tract No. 26292 changed to Tract No. 27304.  
*W. C. Poindexter* 3-16-62

NO CONNECTIONS FOR THE DISPOSAL OF INDUSTRIAL WASTES SHALL BE MADE TO SEWERS SHOWN ON THESE DRAWINGS WITHOUT WRITTEN PERMISSION FROM THE CHIEF ENGINEER AND GENERAL MANAGER OF THE COUNTY SANITATION DISTRICTS.



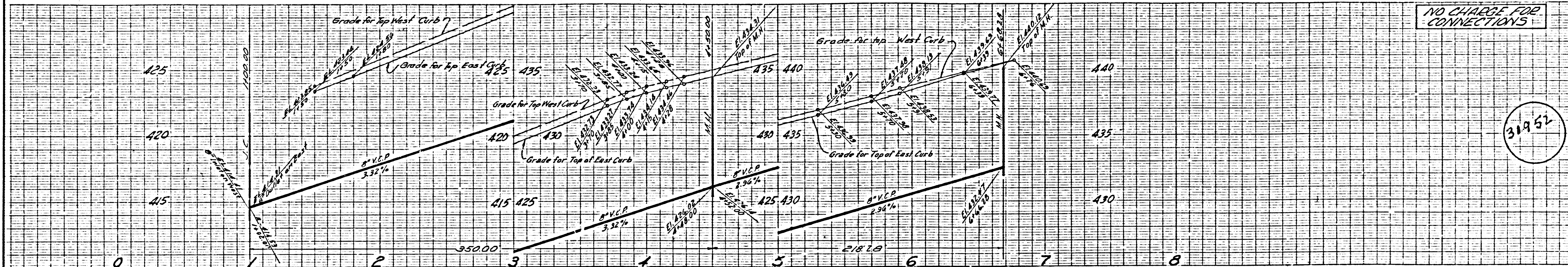
COLLECT CHARGE AS INDICATED

31751

PROPERTY OF THE

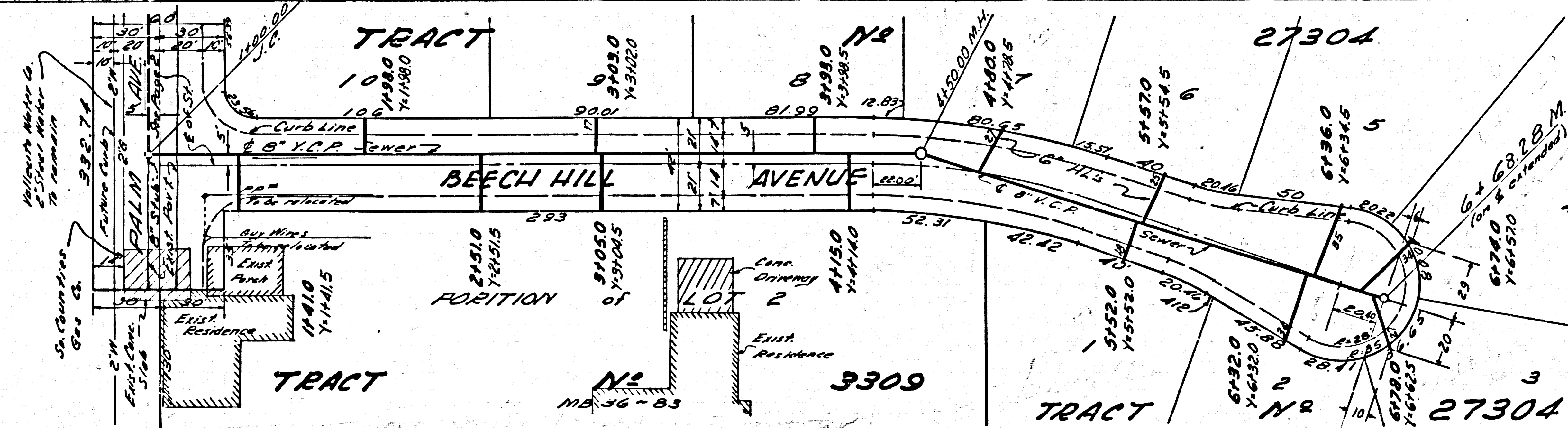
NO CHARGE FOR CONNECTIONS

31952

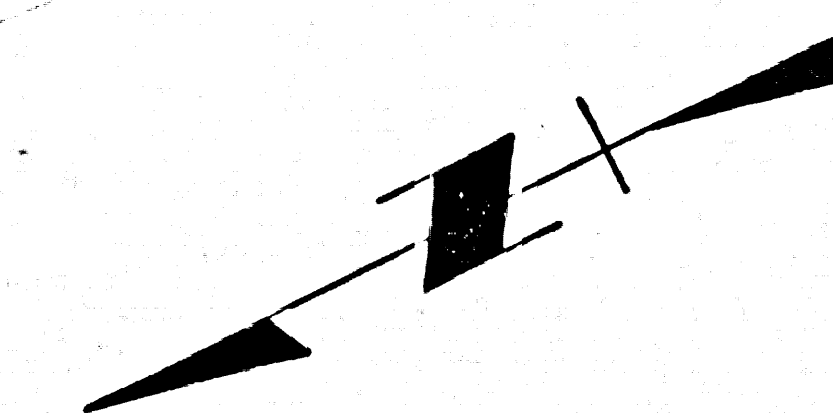


TRACT No 3309  
M.B. 36-83

LOT 1

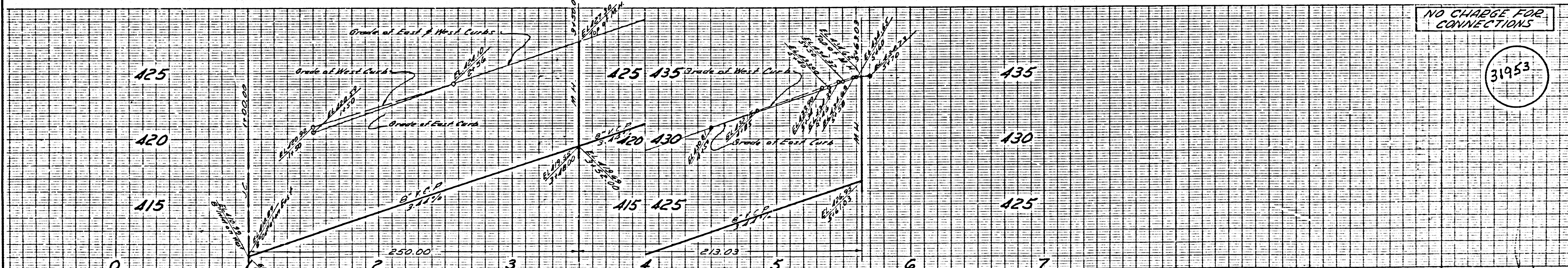


Revisions May 28, 1962



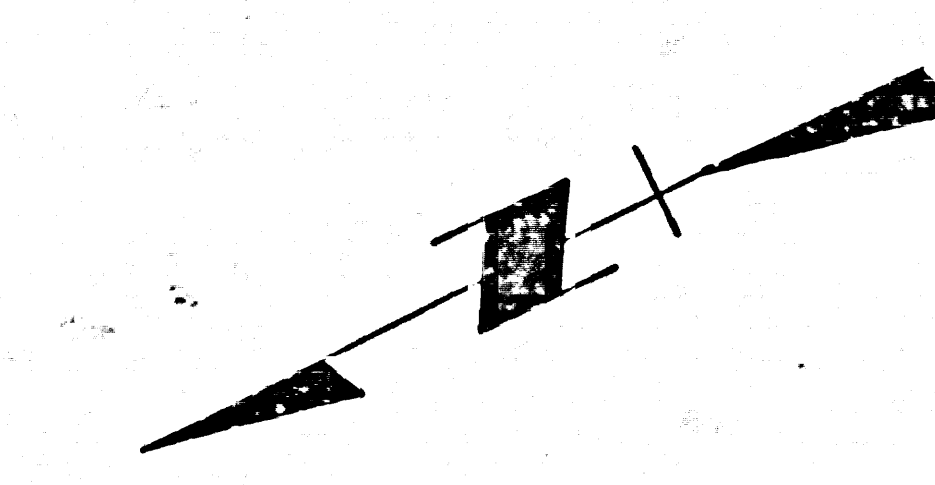
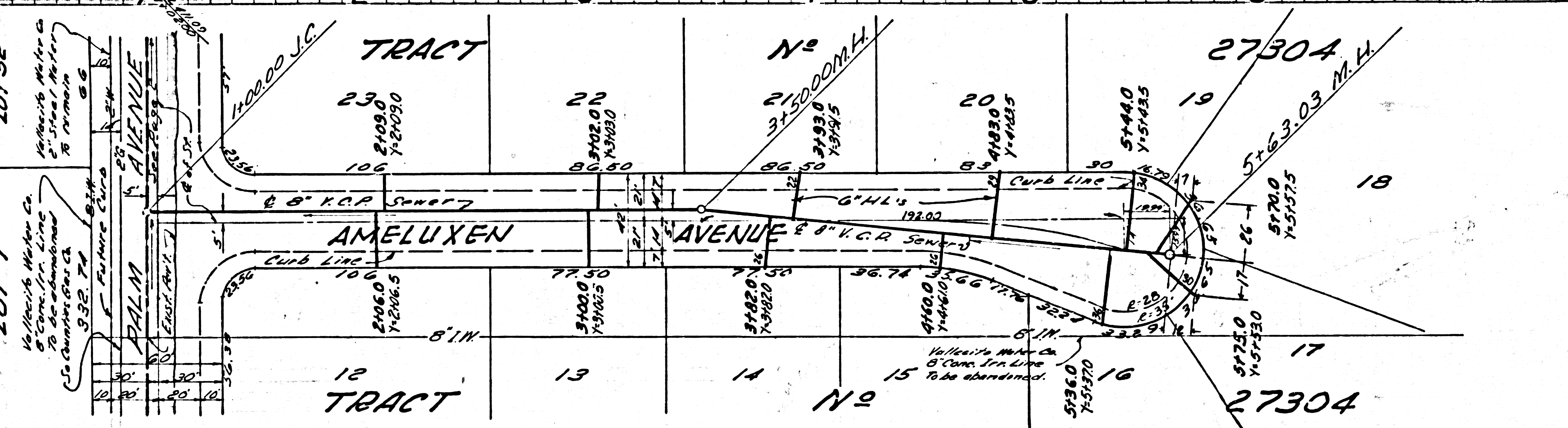
NO CHARGE FOR CONNECTIONS

31953



TRACT No 3309  
M.B. 36-83

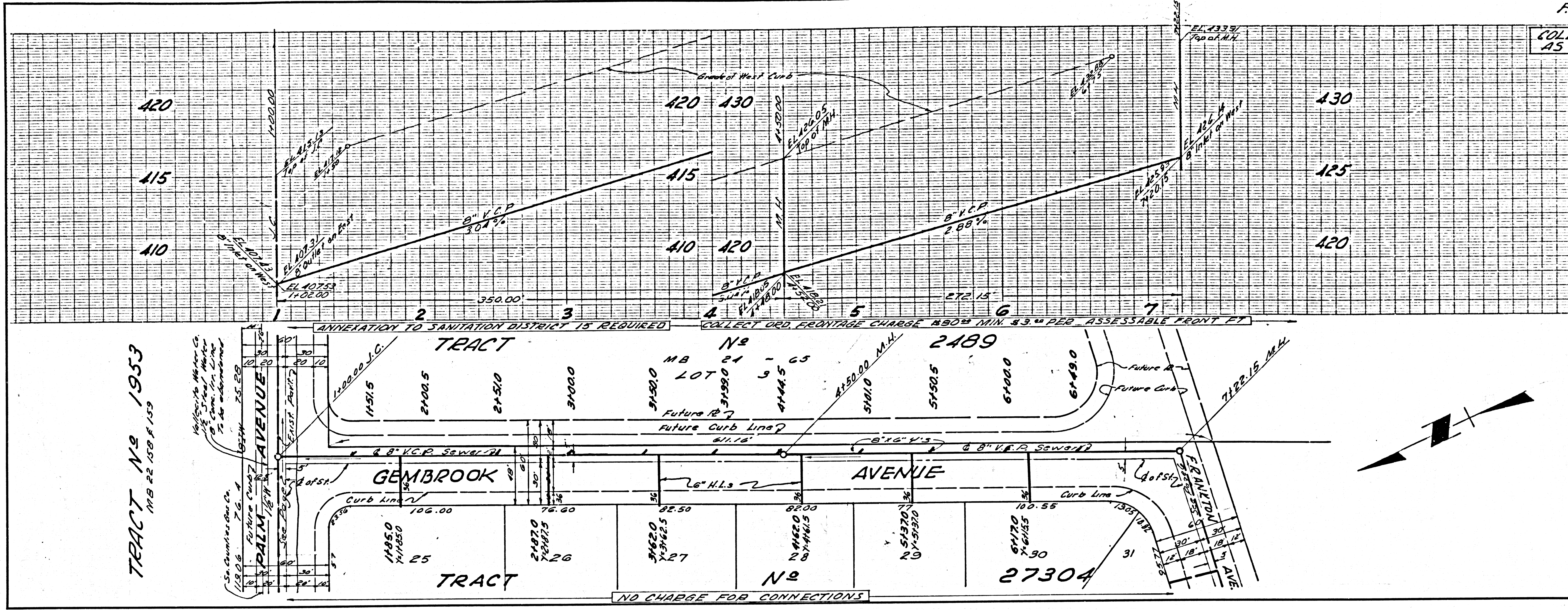
LOT 1



PROPERTY OF J.M.

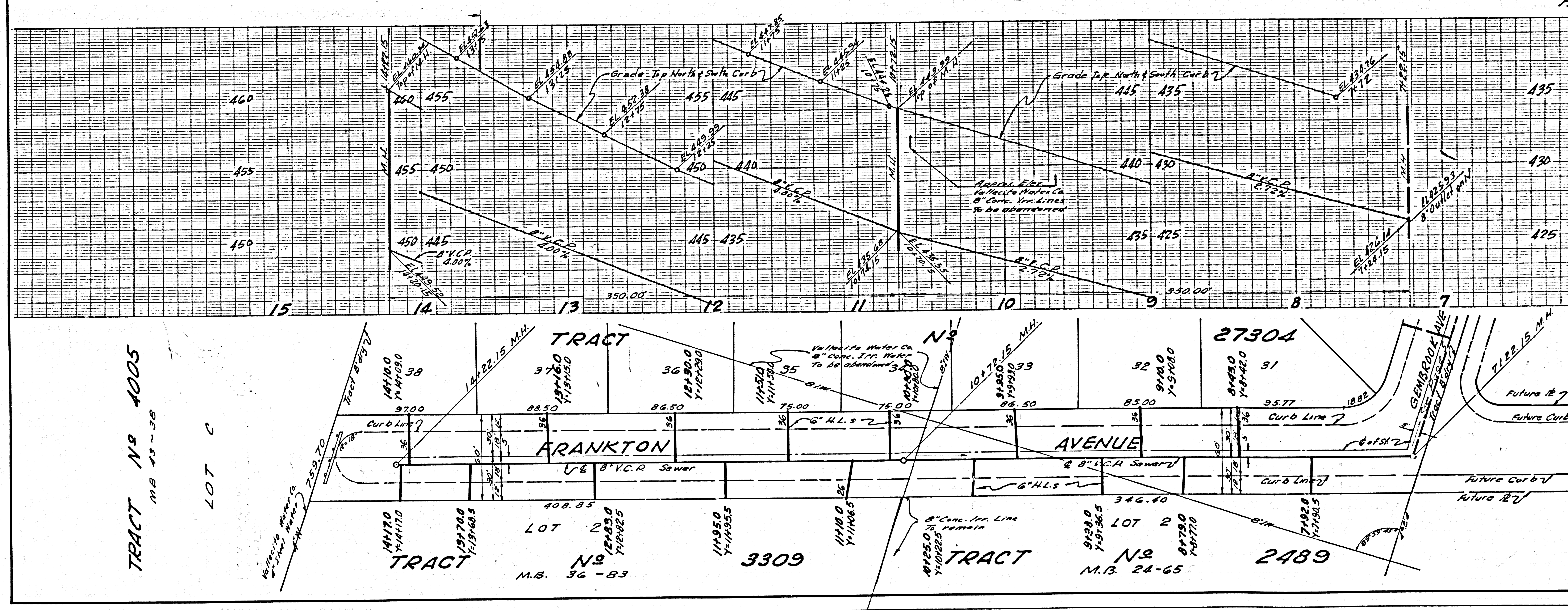
COLLECT CHARGE AS INDICATED

31954



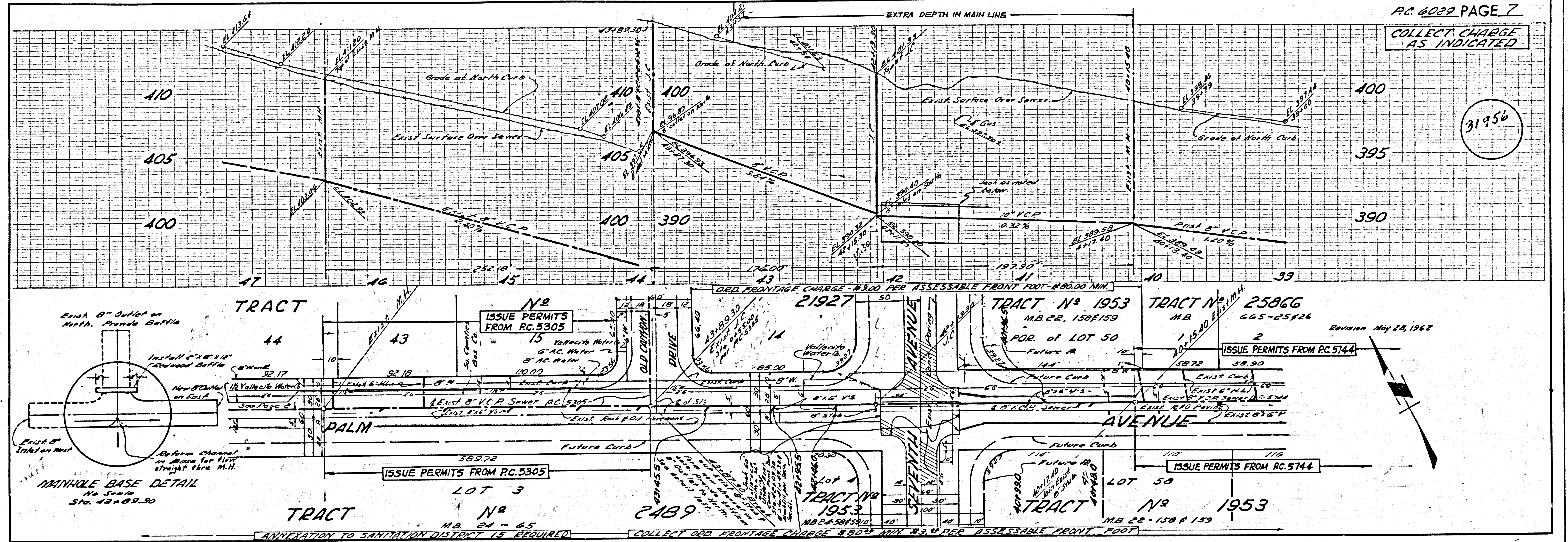
NO CHARGE FOR CONNECTIONS

31955



COLLECT CHARGE AS INDICATED

31956



31956