

PUENTE BLDG. DIST. NO. 2

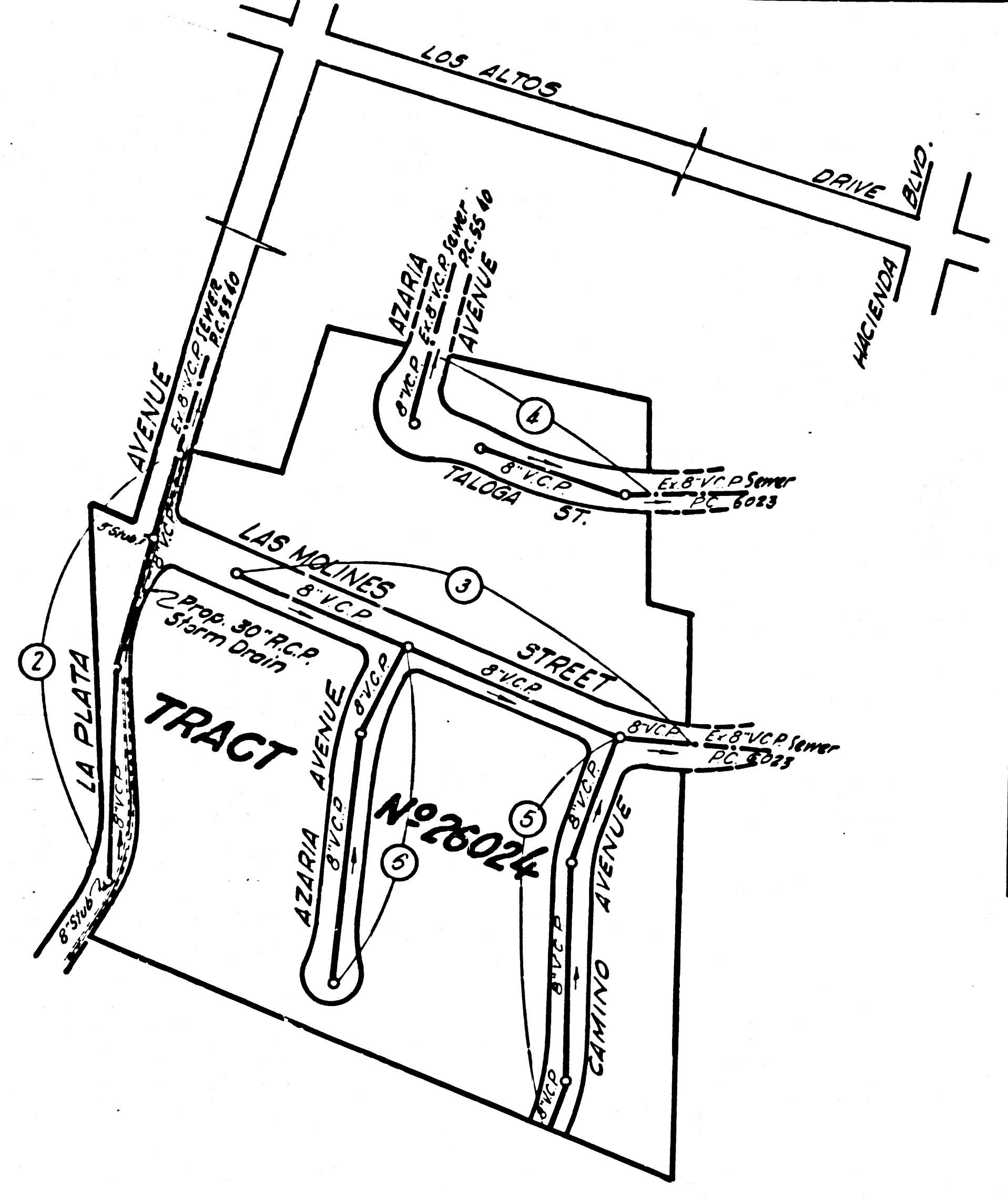
PROFILE ALIGNMENT AND GRADE OF P.C. 6036  
 SANITARY SEWERS PAGE 1  
 TO BE CONSTRUCTED IN J.N. 035693

**TRACT N° 26024**  
 PRIVATE CONTRACT NO. 6036

W.S. 37  
 3 SHEETS: 6 PAGES  
 NOVEMBER, 1961  
 PREPARED IN THE OFFICES OF  
 VOORHEIS, TRINDLE & NELSON  
 1379 L BEACH BOULEVARD  
 WESTMINSTER, CALIFORNIA  
 REG. C. E. NO. 11351  
 FOR LEGEND SEE PLAN NO. S-A-64

31641

INDEX MAP  
 SCALE: 1" = 20'  
 TRACT N° 26024  
 P.C. 6036



**REVISIONS :**  
 1. PAGE 3 - CHANGED LOCATION OF M.H. AT CAMINO AVE.  
 2. PAGE 5 - ALIGNMENT OF SEWER CHANGED RESULTING FROM NEW M.H. LOCATION IN LAS MOLINES ST.  
 Robert M. Singleton 1-23-62

- NOTES:**
1. PROVIDE STAKES ON THE PROPERTY LINE OR PROPERTY LINES PRODUCED AT RIGHT ANGLES TO THE SEWER LINE AT THE CENTER LINE OF EACH MANHOLE.
  2. NO REPRESENTATIVE OF THE COUNTY ENGINEER WILL SURVEY OR LAY OUT ANY PORTION OF THE WORK.
  3. THE OWNER OR HIS AUTHORIZED REPRESENTATIVE SHALL FURNISH THE COUNTY ENGINEER WITH GRADE SHEETS AND STATIONING FOR ALL HOUSE LATERALS AND Y BRANCHES AND SHALL PROVIDE STAKES FOR THEM AT THEIR PROPER LOCATIONS WITH STATIONING PLAINLY MARKED. ANY CHANGE IN LOCATION SHALL BE REQUESTED IN WRITING BY THE OWNER OR HIS REPRESENTATIVE.
  4. THE PRIVATE ENGINEER SHALL FURNISH THE HOUSE LATERAL DEPTH AT THE PROPERTY LINE BELOW THE TOP OF CURB ELEVATION FOR EACH HOUSE LATERAL ON THE GRADE SHEET.
  5. NO REVISIONS SHALL BE MADE IN THESE PLANS WITHOUT THE APPROVAL OF THE COUNTY ENGINEER.
  6. USE STANDARD MANHOLE FRAMES AND COVERS, S-117.
  7. USE EXTRA STRENGTH PIPE - ALL PIPE STANDARD DEPTH EXCEPT AS NOTED.
  8. USE CEMENT MORTAR OR "WEDGLOCK" OR "SPEED-SEAL" FOR ALL V.C.P. JOINTS PER SPECS. SECS. 34 & 44.
  9. RESURFACE ALL TRENCH WITHIN PAVED AREA TO MEET L.A. COUNTY ROAD DEPT. OR CALIF. STATE HIGHWAY REQUIREMENTS IN ACCORDANCE WITH PERMITS.
  10. ENCASE FOUR FEET OF SEWER AT POINTS OF INTERFERENCE WITH POLES, CASE III, S-4-172.
  11. HOUSE LATERALS TO BE CONSTRUCTED WITH INVERTS AT PROPERTY LINE - 6" FEET BELOW CURB GRADE EXCEPT AS NOTED.
  12. ALL STRUCTURES SHALL BE BRICK SEWER STRUCTURES S-104. PRECAST CONCRETE MANHOLES PER S-105 OR S-106. 173 MAY BE USED AS ALTERNATE IN LOCATIONS APPROVED BY THE COUNTY ENGINEER.
  13. FOR ALLOWABLE LEAKAGE TEST USE FORMULA NO. 1 APPROVED BY THE COUNTY ENGINEER, SPECS., SEC. 34.
  14. MANHOLE TOPS IN UNIMPROVED RIGHTS-OF-WAY TO BE SIX INCHES ABOVE FINISHED GRADE.
  15. THE CONTRACTOR SHALL NOTIFY THE CONSTRUCTION DIVISION BY TELEPHONE, MADISON 9-471, EX-1551 AT LEAST TWENTY-FOUR HOURS BEFORE STARTING ANY WORK UNDER THIS CONTRACT.
  16. STANDARD SPECIFICATIONS DATED OCT. 25, 1961 APPLY IN THE CONSTRUCTION OF THIS PROJECT.

**DO NOT ISSUE PERMITS UNTIL P.C. 6023 IS CONSTRUCTED.**

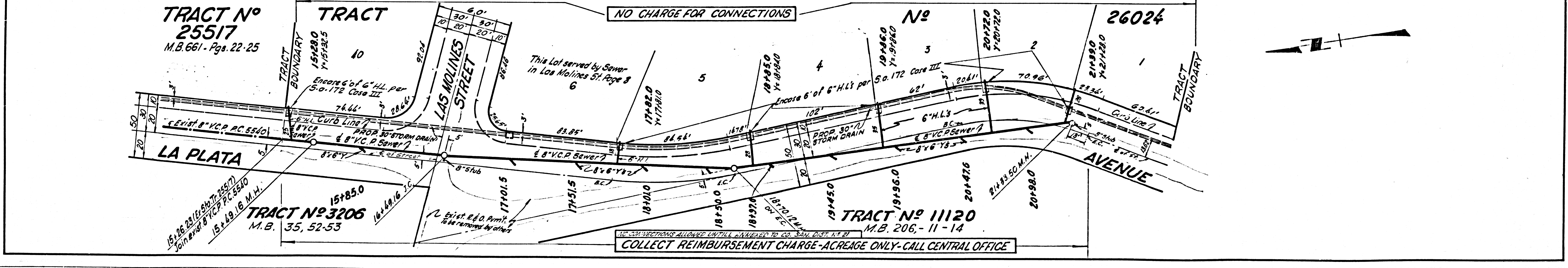
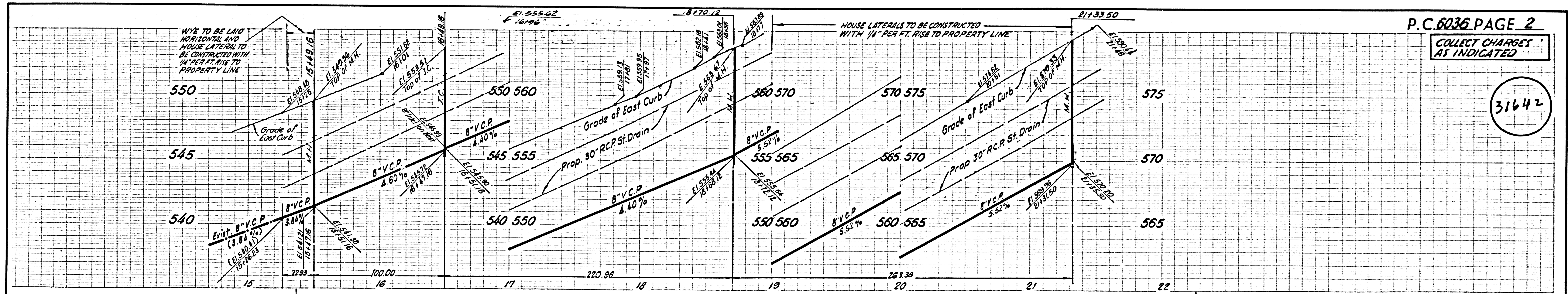
**COLLECT CHARGES AS INDICATED**  
 SK Under 1-2-62

BENCH MARK 56162  
 14.7 IN S.E. COR. OF CONC. WEIR BOX  
 1.33' N. & LOS ALTOS DR & 15' E.  
 OF LA PLATA AVE. PROD. (WHITTIER QUAD 1855)  
 ELEV. 521.903

**NOTE:**  
 GRADES TO WHICH THIS IMPROVEMENT IS TO BE CONSTRUCTED ARE SHOWN ON PLANS AND PROFILES. GRADE POINTS FOR TOP OF CURB, CENTER LINE OF STREETS, OR CENTER LINE OF ALLEYS ARE SHOWN BY CIRCLES ON PROFILES. AT ALL POINTS BETWEEN DESIGNATED POINTS THE GRADE SHALL BE ESTABLISHED SO AS TO CONFORM TO A STRAIGHT LINE DRAWN BETWEEN SAID DESIGNATED POINTS.  
 ELEVATIONS ARE IN FEET ABOVE U.S.C. & G.S. SEA LEVEL DATUM OR 1928.  
 THIS DRAWING AND THE DATA HEREON ARE HEREBY MADE A PART OF THE SPECIFICATIONS.  
 WORK SHALL BE CONSTRUCTED ACCORDING TO SPECIFICATIONS ON FILE IN THE OFFICE OF THE COUNTY ENGINEER AND SHALL BE PROCEEDED ONLY IN THE PRESENCE OF THE COUNTY ENGINEER.  
 BEFORE WORK CAN BE STARTED, THE CONTRACTOR MUST OBTAIN A PERMIT TO EXCAVATE IN COUNTY STREETS FROM THE L.A. COUNTY ROAD DEPT., DISTRICT OFFICE NO. 1 AND PAY A FEE TO THE COUNTY ENGINEER ROOM 310 COUNTY ENGINEER BUILDING, ROOM 22025, SUFFICIENT TO COVER THE COST OF CONSTRUCTION INSPECTION AND RECORD PLANS.  
 APPROVAL OF THIS PLAN BY THE COUNTY OF LOS ANGELES DOES NOT CONSTITUTE A REPRESENTATION AS TO THE ACCURACY OF THE LOCATION OR OF THE EXISTENCE OR NON-EXISTENCE OF ANY UNDERGROUND UTILITY PIPE, OR STRUCTURE WITHIN THE LIMITS OF THIS PROJECT. THIS NOTE APPLIES TO ALL PAGES.  
 IF WORK IS TO BE DONE IN A STATE HIGHWAY, A PERMIT MUST BE OBTAINED FROM THE STATE OF CALIFORNIA, DIVISION OF HIGHWAYS, 120 SOUTH SPRING STREET.  
**COUNTY OF LOS ANGELES, CALIFORNIA!**  
 APPROVED, JOHN A. LAMBIE, COUNTY ENGINEER APPROVED, J.D. PARKHURST, CHIEF ENGINEER  
 BY *Robert M. Singleton* BY *G. Forthmann*  
 A SFT. SANITATION ENGINEER OFFICE ENGINEER  
 CHECKED BY *SK Under* 1-2-62  
 OFFICE OF COUNTY ENGINEER, REG. C. E. NO. 9406  
 SUBMITTED: *Robert M. Singleton*  
 SAN DIMAS REGIONAL OFFICE

P.C. 6036 PAGE 2  
**COLLECT CHARGES AS INDICATED**

31642

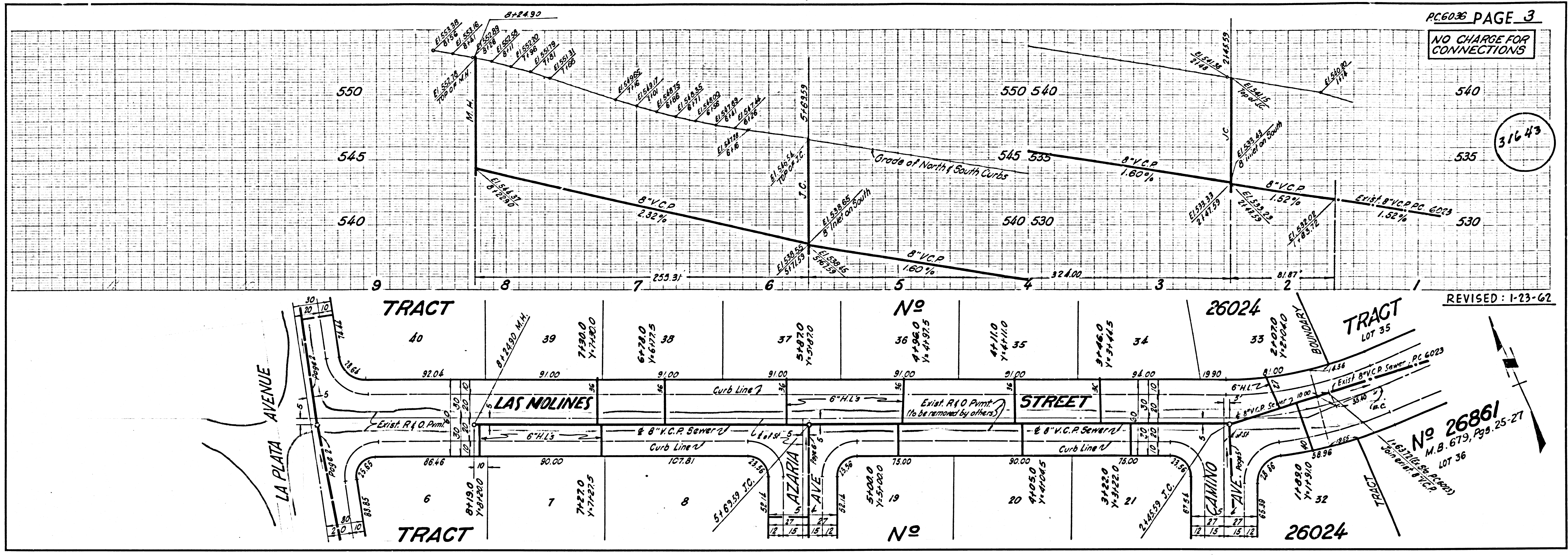


COLLECT REIMBURSEMENT CHARGE-ACREAGE ONLY-CALL CENTRAL OFFICE

NO CHARGE FOR CONNECTIONS

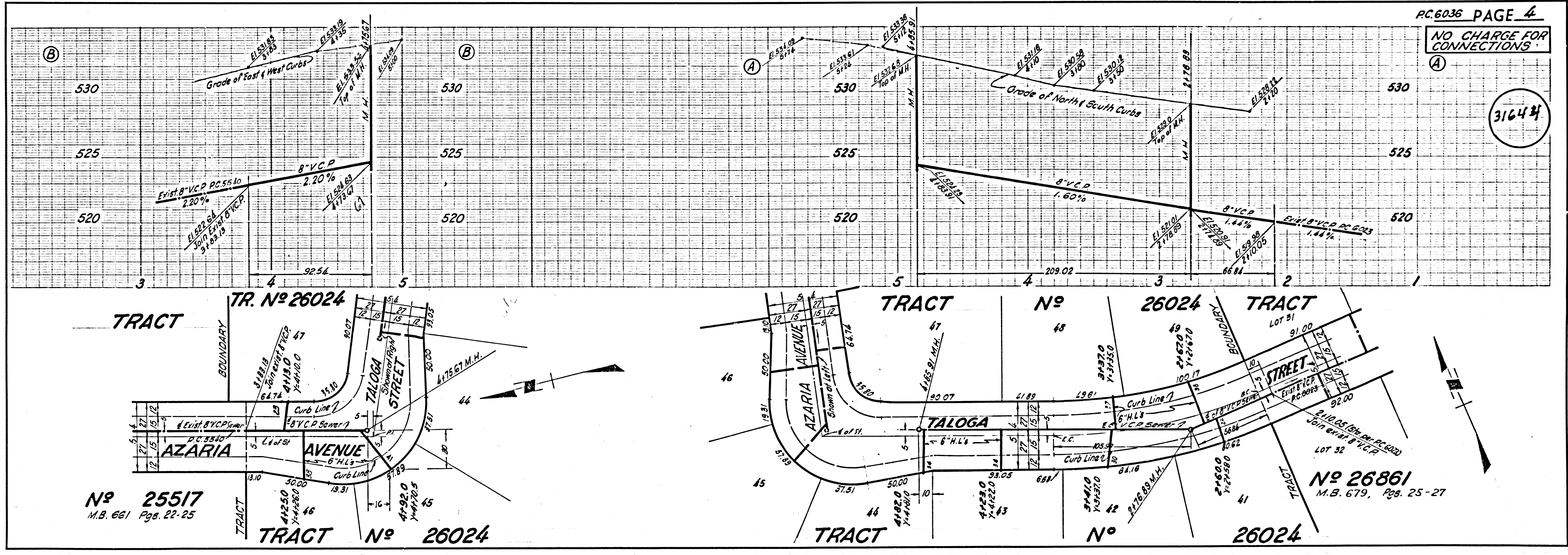
31643

REVISED: 1-23-62



NO CHARGE FOR CONNECTIONS

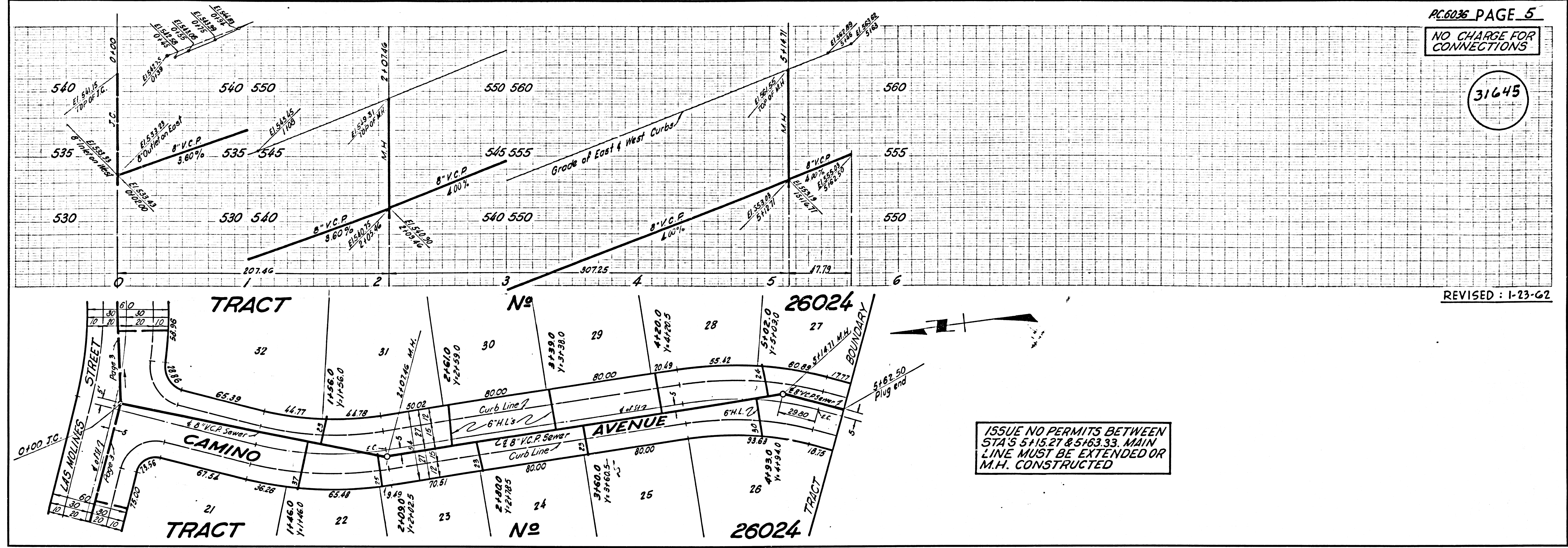
31644



NO CHARGE FOR CONNECTIONS

31645

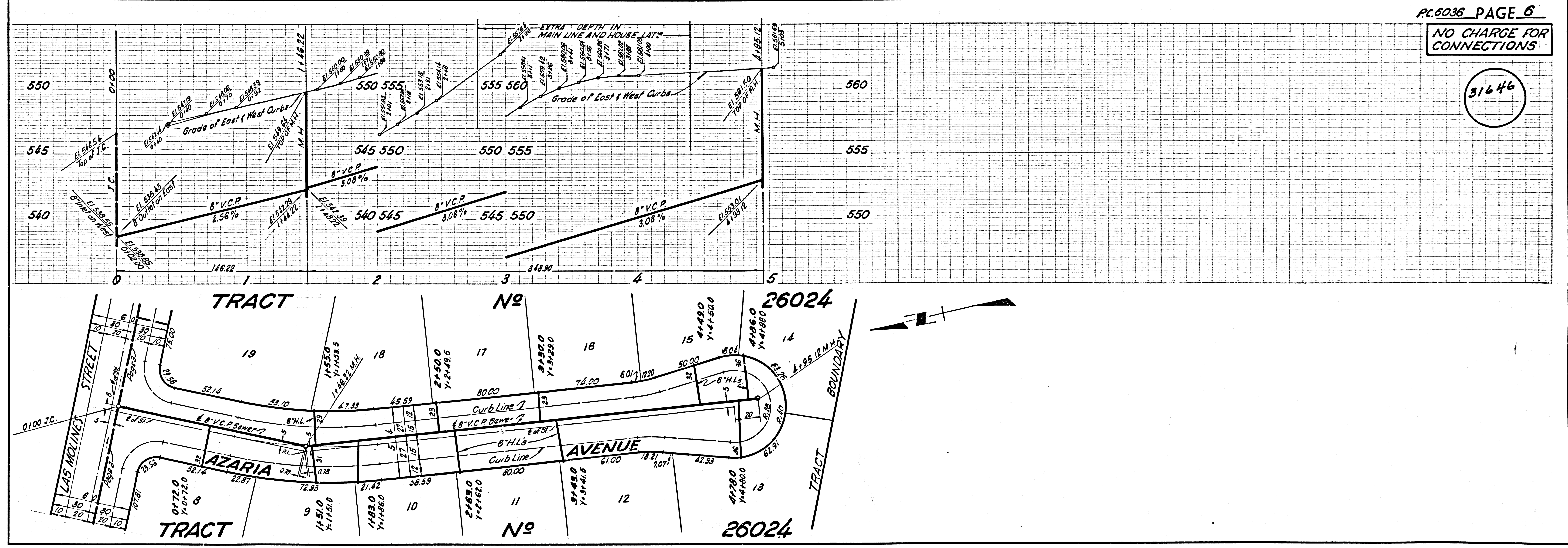
REVISED: 1-23-62



ISSUE NO PERMITS BETWEEN STA'S 5+15.27 & 5+163.33. MAIN LINE MUST BE EXTENDED OR M.H. CONSTRUCTED

NO CHARGE FOR CONNECTIONS

31646



PC 6036 PAGE 5  
PC 6036 PAGE 6