

DOUBLE SCALE  
LOMITA BLDG. DIST. NO. 12

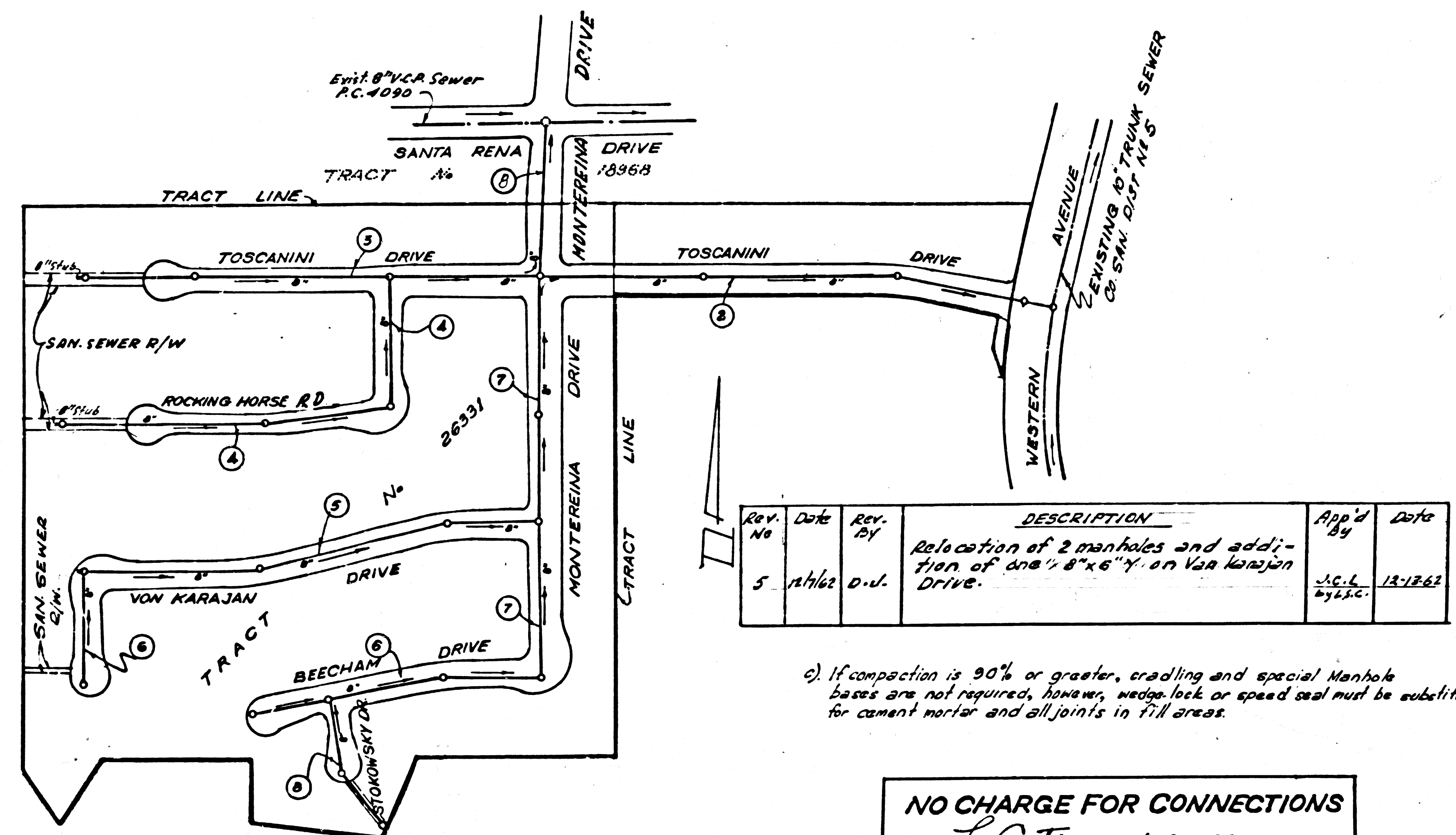
PROFILE ALIGNMENT AND GRADE OF P.C. 6037  
SANITARY SEWERS PAGE 1  
TO BE CONSTRUCTED IN J.M. 0356.94

TRACT No 26331  
PRIVATE CONTRACT NO. 6037

W.S. 20  
4 SHEETS; 8 PAGES  
SCALE: VERT. 1"=0' Sept. 1961  
HORIZ. 1"=40'  
PREPARED IN THE OFFICES OF  
BARCLAY-PEARSON CO. INC.

By Edward J. Pearson  
REG. C. E. NO. 9783

FOR LEGEND SEE PLAN NO. S.A-64



INDEX MAP TR. No 26331  
P.C. No. 6037  
SCALE: 1"=200'

REV. No	Date	REV. BY	DESCRIPTION	App'd By	Date
5	1/16/62	D.J.	Relocation of 2 manholes and addition of one 8"x6" on Von Karajan Drive.	A.C.L. 2/16/62	12-12-62

c) If compaction is 90% or greater, cradling and special Manhole Bases are not required, however, wedge lock or speed seal must be substituted for cement mortar and all joints in fill areas.

NO CHARGE FOR CONNECTIONS  
L. Curtis 1-25-62

REV. No	Date	REV. BY	DESCRIPTION	App'd By	Date
1	5/1/62	r.c.	Line on Stokowski Drive extended 50' between lots 22 and 23.	E.S.	6-7-62
2	5/1/62	r.c.	Addition of 11 lots on Toscanini Drive	E.S.	"
3	5/7/62	r.c.	Revision lot numbers & dimensions	E.S.	"
4	5/7/62	r.c.	Increased pipe size from 8" to 10" 24" 24" to 24" 24" by 2"	E.S.	"

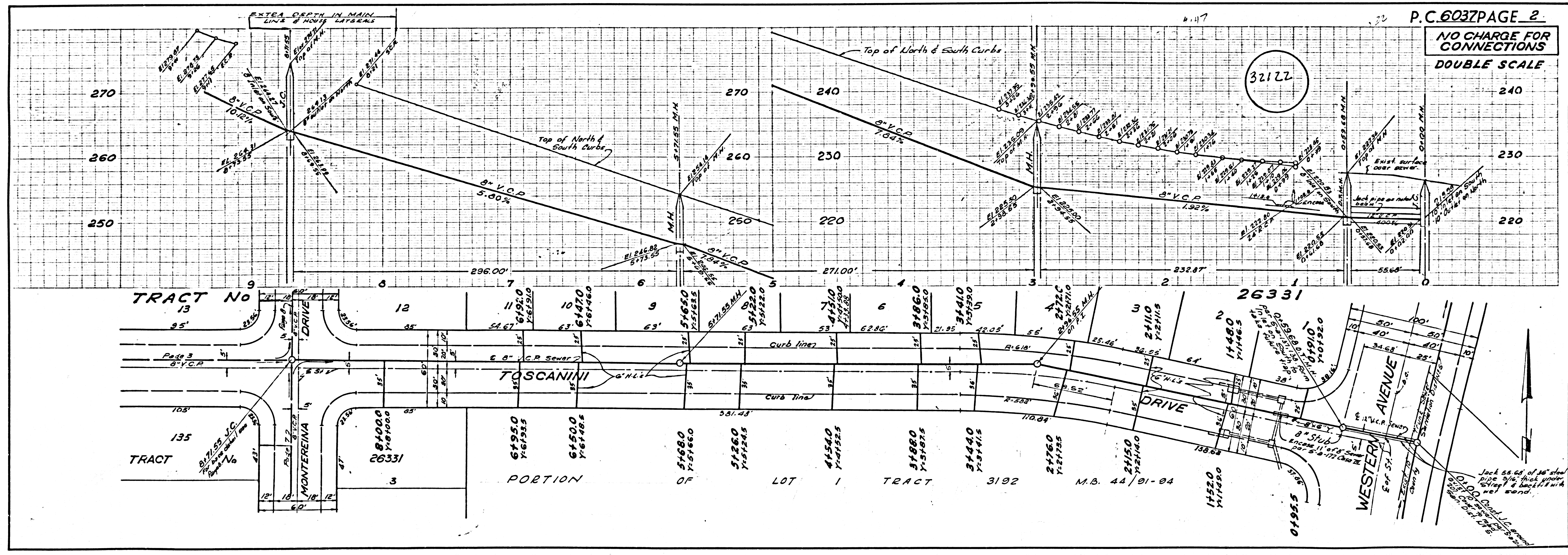
- NOTES:
- PROVIDE STAKES ON THE PROPERTY LINE OR PROPERTY LINES PRODUCED AT RIGHT ANGLES TO THE SEWER LINE AT THE CENTER LINE OF EACH MANHOLE.
  - NO REPRESENTATIVE OF THE COUNTY ENGINEER WILL SURVEY OR LAY OUT ANY PORTION OF THE WORK.
  - THE OWNER OR HIS AUTHORIZED REPRESENTATIVE SHALL FURNISH THE COUNTY ENGINEER WITH GRADE SHEETS AND STATIONING FOR ALL HOUSE LATERALS AND Y BRANCHES AND SHALL PROVIDE STAKES FOR THEM AT THEIR PROPER LOCATIONS WITH STATIONING PLAINLY MARKED. ANY CHANGE IN LOCATION SHALL BE REQUESTED IN WRITING BY THE OWNER OR HIS REPRESENTATIVE.
  - THE PRIVATE ENGINEER SHALL FURNISH THE HOUSE LATERAL DEPTH AT THE PROPERTY LINE BELOW THE TOP OF CURB ELEVATION FOR EACH HOUSE LATERAL ON THE GRADE SHEET.
  - NO REVISIONS SHALL BE MADE IN THESE PLANS WITHOUT THE APPROVAL OF THE COUNTY ENGINEER.
  - USE STANDARD MANHOLE FRAMES AND COVERS, 24" DIA. EXCEPT AS NOTED.
  - USE EXTRA STRENGTH PIPE. ALL PIPE IS STANDARD DEPTH, EXCEPT AS NOTED.
  - USE CEMENT MORTAR OR "WEDGE-LOCK" OR "SPEED-SEAL" FOR ALL V.P. JOINTS PER S.P.C. SECS. 34 & 44.
  - RESURFACE ALL TRENCH WITHIN PAVED AREA TO MEET L.A. COUNTY ROAD DEPT. OR CALIF. STATE HIGHWAY REQUIREMENTS IN ACCORDANCE WITH PERMITS.
  - ENCASE FOUR FEET OF SEWER AT POINTS OF INTERFERENCE WITH POLES CASE III, 5-112.
  - HOUSE LATERALS TO BE CONSTRUCTED WITH INVERTS AT PROPERTY LINE... FEET BELOW CURB GRADE EXCEPT AS NOTED.
  - ALL STRUCTURES SHALL BE BRICK SEWER STRUCTURES 5'-0" DIA. PRECAST CONCRETE MANHOLES PER S.P.C. SECS. 34 & 44. ALL MANHOLE TOPS IN UNIMPROVED RIGHTS-OF-WAY TO BE SIX INCHES ABOVE FINISHED GRADE.
  - THE CONTRACTOR SHALL NOTIFY THE CONSTRUCTION & STORM DRAIN DIVISION BY TELEPHONE, MADISON 9-4741, EXT. 36, AT LEAST TWENTY-FOUR HOURS BEFORE STARTING ANY WORK UNDER THIS CONTRACT.
  - STANDARD SPECIFICATIONS DATED OCT. 25, 1961 APPLY IN THE CONSTRUCTION OF THIS PROJECT.
  - ALL THE LOCATIONS SHOWN FOR EXISTING SUBSTRUCTURES HAVE BEEN TAKEN FROM RECORDS AND THEIR CORRECTNESS AND COMPLETENESS IS IN NO WAY GUARANTEED. IT SHALL BE THE CONTRACTOR'S RESPONSIBILITY ALONE TO DEFINITELY LOCATE ALL UNDERGROUND LINES OF EVERY NATURE WHETHER SHOWN HEREON OR NOT AND PROTECT THEM FROM DAMAGE. THE CONTRACTOR SHALL BEAR THE TOTAL EXPENSE OF REPAIR TO ANY LINE DAMAGED BY ANY OPERATION IN CONNECTION WITH THE PROSECUTION OF THIS WORK.
  - No construction will be permitted in filled areas unless acceptable certification is submitted to Construction Div. of the County Engr. Dept. that relative compaction is greater than 90%.
  - If compaction is less than 90%, the sewer must be cradled as shown on plans per S.P.C. 166.
- BENCH MARK**  
S.Y. 5662  
L.B. NAIL IN E.C.M. CO. WESTERN  
8' S'LY OF CO. RETURN AT SW CORNER  
DELONDE 40' W'LY AND 69' S'LY  
& INTERSECTION WESTERN & DELONDE  
E.L. 191.850  
(PALMS VERDES 1955)
- NO CONNECTIONS FOR THE DISPOSAL OF INDUSTRIAL WASTES SHALL BE MADE TO SEWERS SHOWN ON THESE DRAWINGS WITHOUT WRITTEN PERMISSION FROM THE CHIEF ENGINEER AND GENERAL MANAGER OF THE COUNTY SANITATION DISTRICTS.

APPROVED, JOHN A. LAMBIE, COUNTY ENGINEER  
APPROVED, J.D. PARKHURST, CHIEF ENGINEER  
OFFICE OF COUNTY ENGINEER, REG. C. E. NO. 7464

ASS'G. SANITATION ENGINEER  
OFFICE ENGINEER

CHECKED BY: J.K. Oiler 2-1-62

SUBMITTED BY: Jack C. Louisa  
PALOS VERDES-CENTINELA VALLEY REGIONAL ENGR.



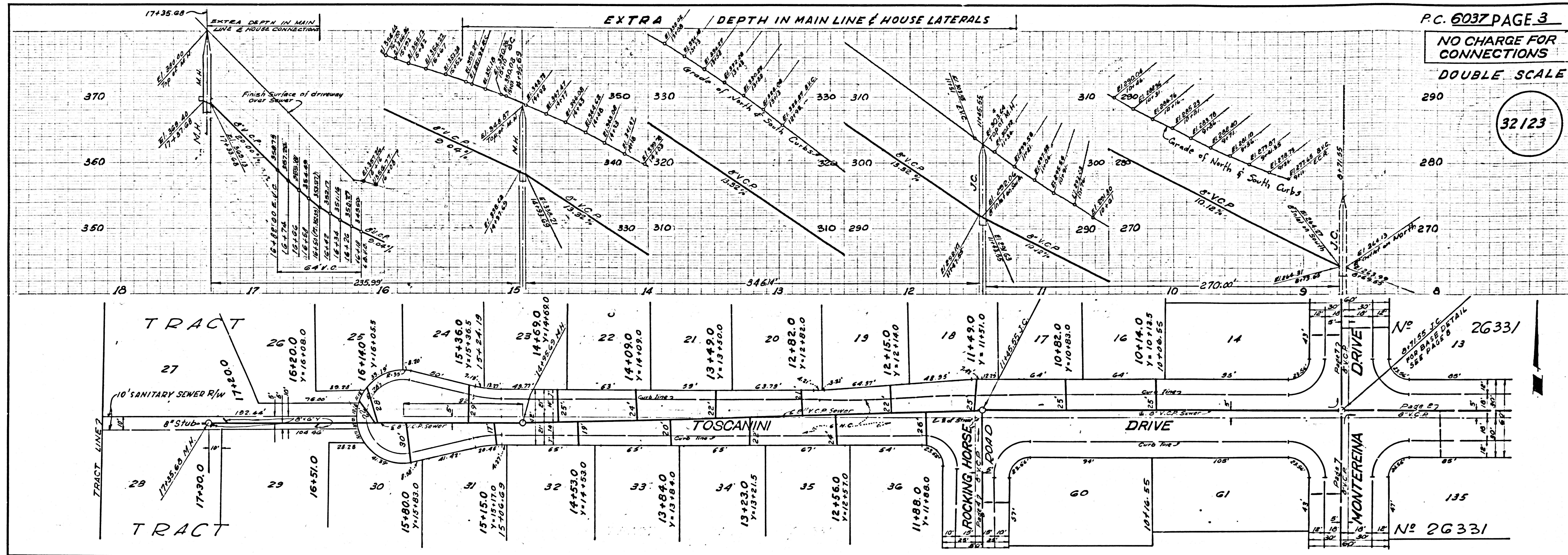
P.C. 6037 PAGE 2  
NO CHARGE FOR CONNECTIONS  
DOUBLE SCALE



NO CHARGE FOR CONNECTIONS

DOUBLE SCALE

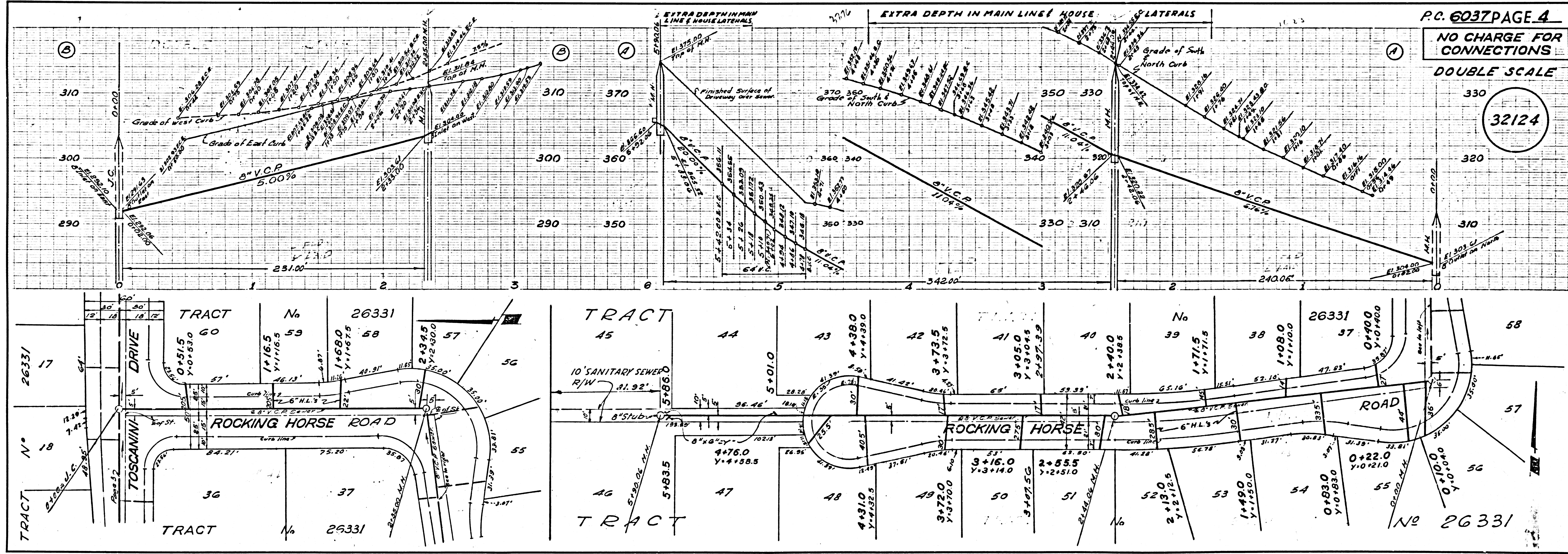
32123



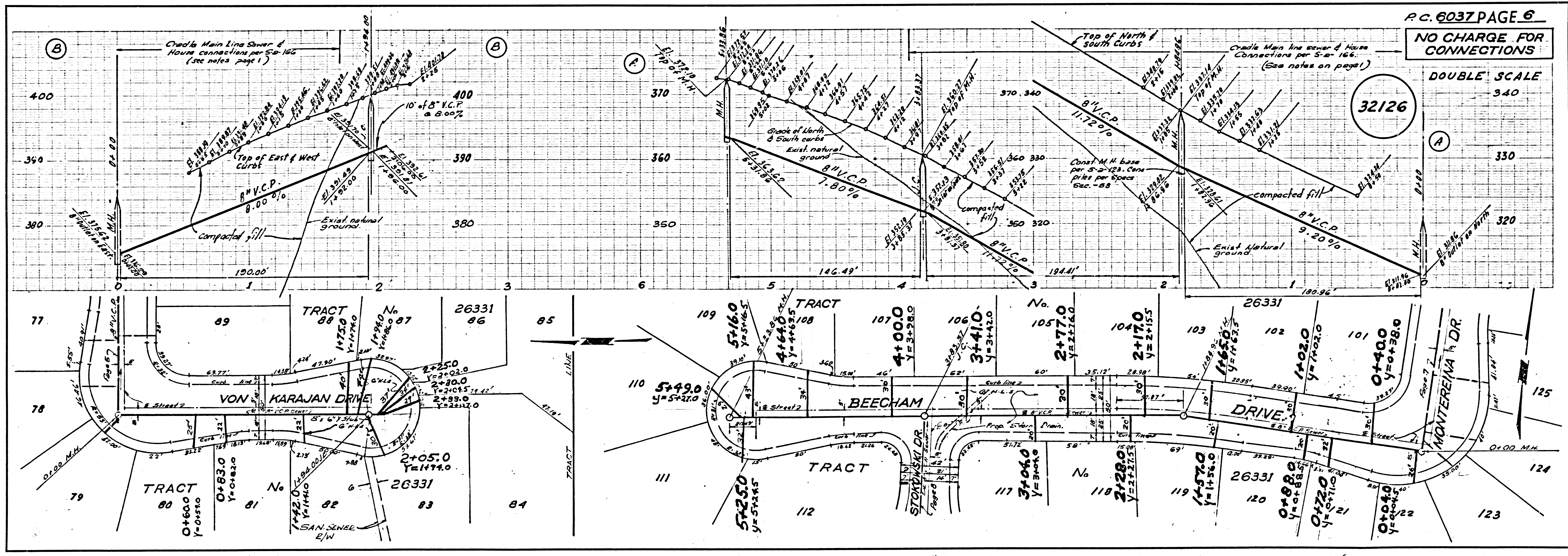
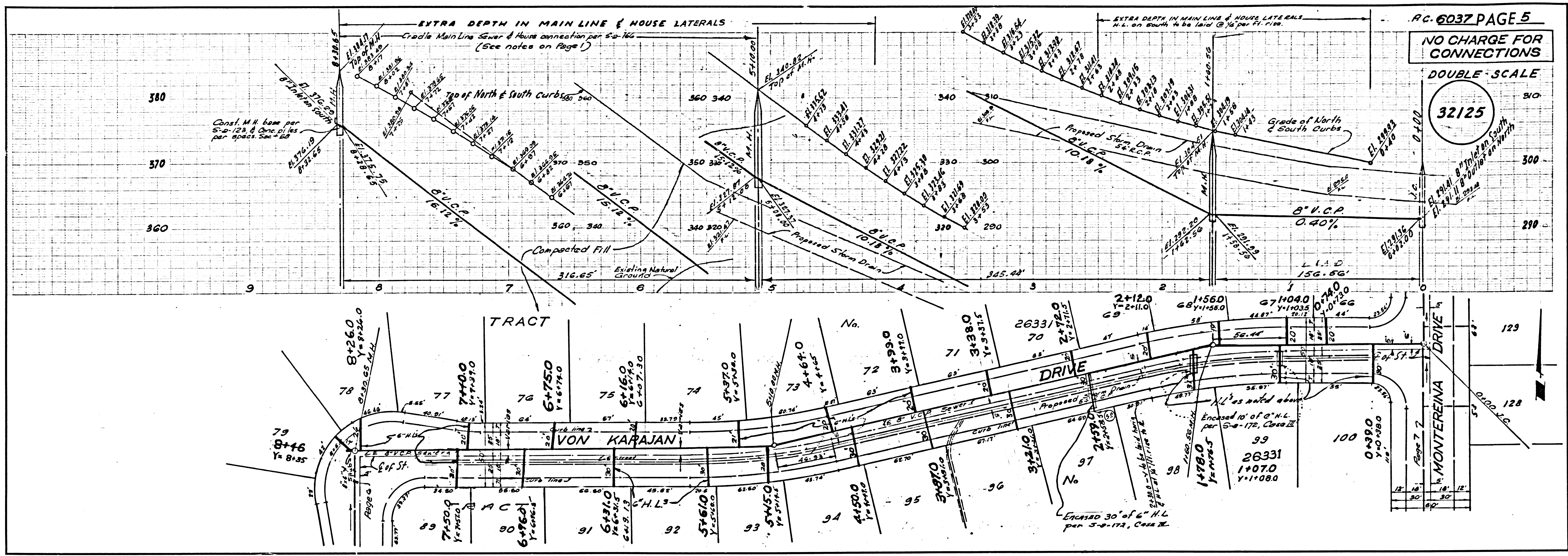
NO CHARGE FOR CONNECTIONS

DOUBLE SCALE

32124





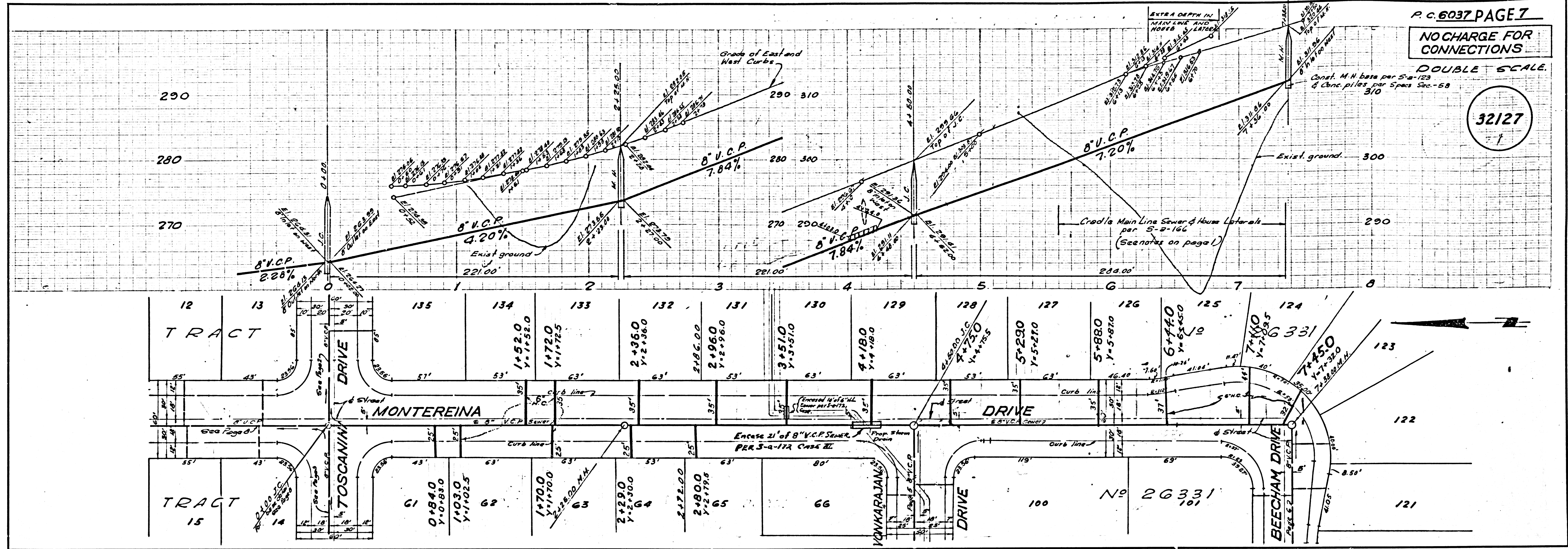




NO CHARGE FOR CONNECTIONS

DOUBLE SCALE

32127



NO CHARGE FOR CONNECTIONS

DOUBLE SCALE

32128

