

PUENTE BLDG. DIST. NO. 2

PROFILE ALIGNMENT AND GRADE OF P.C. 6041

SANITARY SEWERS PAGE 1

TO BE CONSTRUCTED IN

TRACT N° 26584

PRIVATE CONTRACT NO. 6041

W.S. 38

3 SHEETS; 5 PAGES

SCALE: VERT. 1"=5' HORIZ. 1"=40'

AUGUST, 1961

PREPARED IN THE OFFICES OF AMCO ENGINEERS 8844 W. OLYMPIC BLVD. BEVERLY HILLS, CALIF. REG. C. E. NO. 11467

FOR LEGEND SEE PLAN NO. S-A-64

NOTE: GRADES TO WHICH THIS IMPROVEMENT IS TO BE CONSTRUCTED ARE SHOWN ON PLANS AND PROFILES. GRADE POINTS FOR TOP OF CURBS, CENTER LINE OF STREETS, OR CENTER LINE OF ALLEYS ARE SHOWN BY CIRCLES ON PROFILES. AT ALL POINTS BETWEEN DESIGNATED POINTS THE GRADE SHALL BE ESTABLISHED SO AS TO CONFORM TO A STRAIGHT LINE DRAWN BETWEEN SAID DESIGNATED POINTS. ELEVATIONS ARE IN FEET ABOVE U.S.C. & G.S. SEA LEVEL DATUM OF 1929. THIS DRAWING AND THE DATA HEREON ARE HEREBY MADE A PART OF THE SPECIFICATIONS. WORK SHALL BE CONSTRUCTED ACCORDING TO SPECIFICATIONS ON FILE IN THE OFFICE OF THE COUNTY ENGINEER AND SHALL BE PROSECUTED ONLY IN THE PRESENCE OF THE COUNTY ENGINEER. BEFORE WORK CAN BE STARTED, THE CONTRACTOR MUST OBTAIN A PERMIT TO EXCAVATE IN COUNTY STREETS FROM THE L. A. COUNTY ROAD DEPT., DISTRICT OFFICE NO. 1, AND PAY A FEE OF \$2 THE COUNTY ENGINEER, ROOM 810, 108 W. SECOND STREET, LOS ANGELES, CALIF. SUFFICIENT TO COVER THE COST OF CONSTRUCTION INSPECTION AND RECORD PLANS. APPROVAL OF THIS PLAN BY THE COUNTY OF LOS ANGELES DOES NOT CONSTITUTE A REPRESENTATION AS TO THE ACCURACY OF THE LOCATION OF OR THE EXISTENCE OR NON-EXISTENCE OF ANY UNDERGROUND UTILITY PIPE, OR STRUCTURE WITHIN THE LIMITS OF THIS PROJECT. THIS NOTE APPLIES TO ALL PAGES. IF WORK IS TO BE DONE IN A STATE HIGHWAY, A PERMIT MUST BE OBTAINED FROM THE STATE OF CALIFORNIA, DIVISION OF HIGHWAYS, 128 SOUTH SPRING STREET.

COUNTY OF LOS ANGELES, CALIFORNIA

APPROVED, JOHN A. LAMBIE, COUNTY ENGINEER APPROVED, J. D. PARKHURST, CHIEF ENGINEER CO. SAN. DIST. NO. 21

BY *[Signature]* BY *[Signature]*

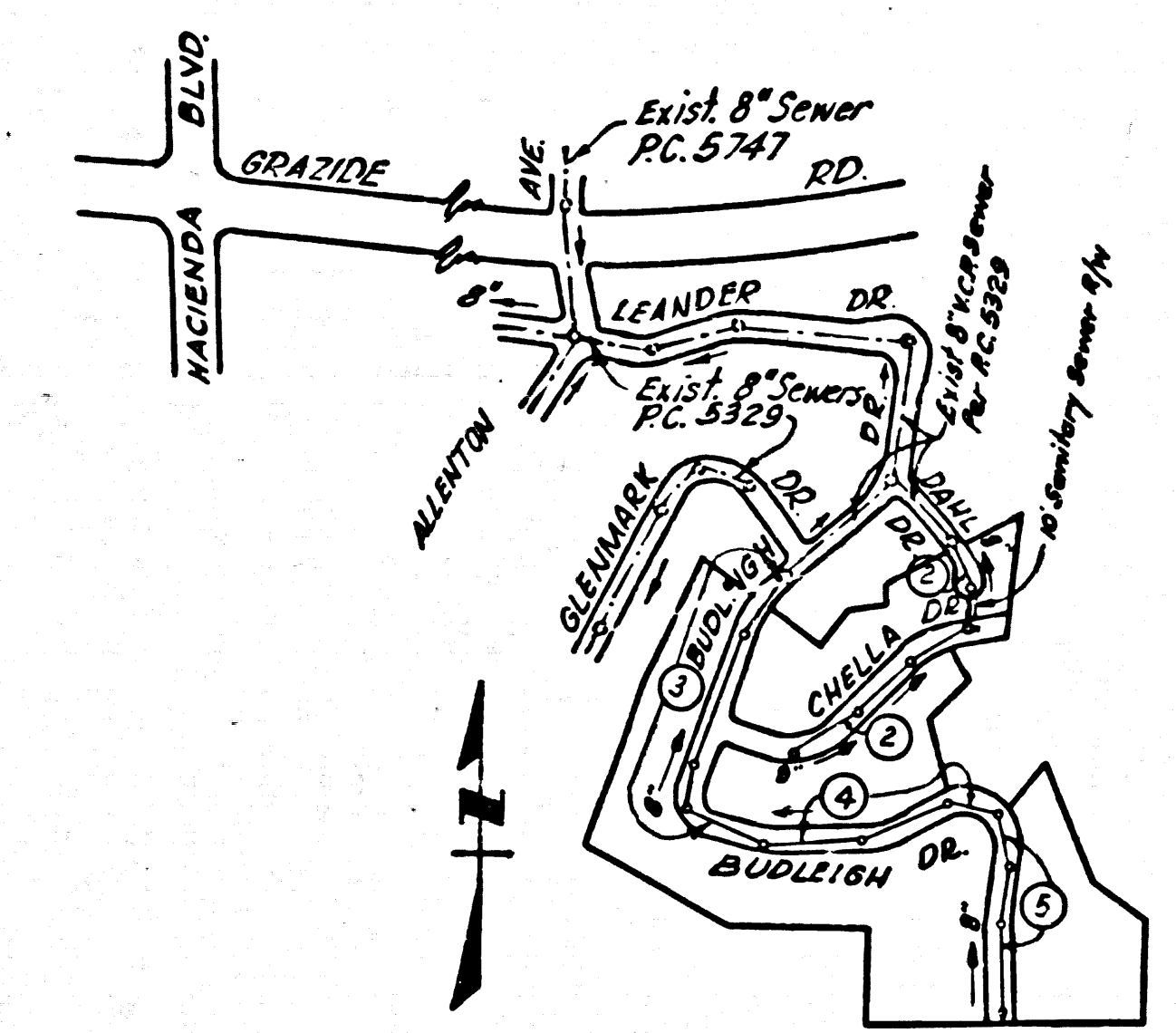
SANITATION ENGINEER OFFICE ENGINEER

CHECKED BY *[Signature]* OFFICE OF COUNTY ENGINEER, REG. C. E. NO. 2406

SUBMITTED *[Signature]* SAN DIMAS REGIONAL ENGINEER

NO CONNECTIONS FOR THE DISPOSAL OF INDUSTRIAL WASTES SHALL BE MADE TO SEWERS SHOWN ON THESE DRAWINGS WITHOUT WRITTEN PERMISSION FROM THE CHIEF ENGINEER AND GENERAL MANAGER OF THE COUNTY SANITATION DISTRICTS.

BENCH MARK: S.B. 1711  
Pd. 3/4" I.P. 12" down to 2960 ft. Ely of int. of Hacienda Blvd. & Luisweiler Road (Grande Rd.), & 45.44 ft. Sly of P.L. #2 (Ref. Pt. to P.L. #2) Elev. 641.241 OCTOBER 1955



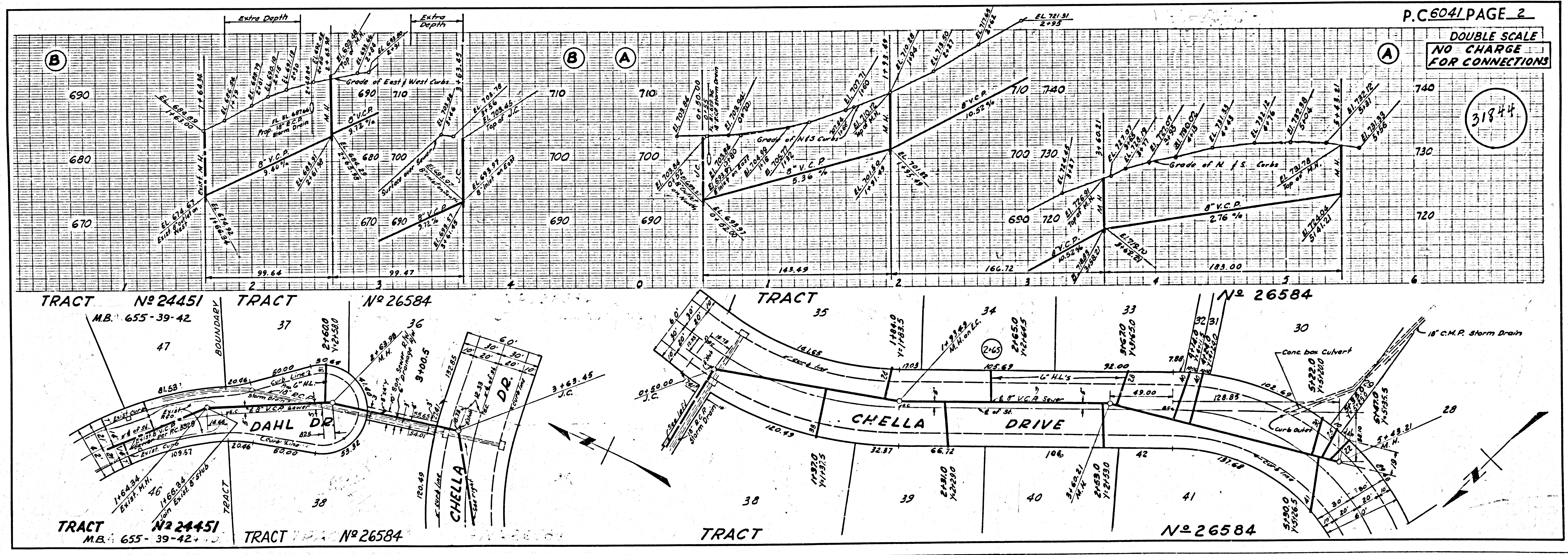
INDEX MAP SCALE: 1"=600 TRACT NO. 26584 P.C. 6041

- NOTES:
1. PROVIDE STAKES ON THE PROPERTY LINE OR PROPERTY LINES PRODUCED AT RIGHT ANGLES TO THE SEWER LINE AT THE CENTER LINE OF EACH MANHOLE.
  2. NO REPRESENTATIVE OF THE COUNTY ENGINEER WILL SURVEY OR LAY OUT ANY PORTION OF THE WORK.
  3. THE OWNER OR HIS AUTHORIZED REPRESENTATIVE SHALL FURNISH THE COUNTY ENGINEER WITH GRADE SHEETS AND STATIONING FOR ALL HOUSE LATERALS AND Y BRANCHES AND SHALL PROVIDE STAKES FOR THEM AT THEIR PROPER LOCATIONS WITH STATIONING PLAINLY MARKED. ANY CHANGE IN LOCATION SHALL BE REQUESTED IN WRITING BY THE OWNER OR HIS REPRESENTATIVE.
  4. THE PRIVATE ENGINEER SHALL FURNISH THE HOUSE LATERAL DEPTH AT THE PROPERTY LINE BELOW THE TOP OF CURB ELEVATION FOR EACH HOUSE LATERAL ON THE GRADE SHEET.
  5. NO REVISIONS SHALL BE MADE IN THESE PLANS WITHOUT THE APPROVAL OF THE COUNTY ENGINEER.
  6. USE STANDARD MANHOLE FRAMES AND COVERS, S-117.
  7. USE EXTRA STRENGTH PIPE, ALL PIPE STANDARD DEPTH, EXCEPT AS NOTED.
  8. USE CEMENT MORTAR OR "WEDGE-LOCK" OR "SPEED-SEAL" FOR ALL Y.C.P. JOINTS PER SPECS., SEC. 34 & 41.
  9. RESURFACE ALL TRENCH WITHIN PAVED AREA TO MEET L.A. COUNTY ROAD DEPT. OR CALIF. STATE HIGHWAY REQUIREMENTS IN ACCORDANCE WITH PERMITS.
  10. ENCASE FOUR FEET OF SEWER AT POINTS OF INTERFERENCE WITH POLES, CASE III, S-117.
  11. HOUSE LATERALS TO BE CONSTRUCTED WITH INVERTS AT PROPERTY LINE, 6" FEET BELOW CURB GRADE.
  12. MANHOLES SHALL BE BUCK SEWER STRUCTURES PER S-117-1014. PRECAST CONCRETE MANHOLES PER S-117-1011 OR S-117-1012 MAY BE USED AS AN ALTERNATE IN LOCATIONS APPROVED BY THE COUNTY ENGINEER.
  13. FOR ALLOWABLE LEAKAGE TEST USE FORMULA NO. 1, SPECS., SEC. 34.
  14. MANHOLE TOPS IN UNIMPROVED RIGHTS-OF-WAY TO BE SIX INCHES ABOVE FINISHED GRADE.
  15. THE CONTRACTOR SHALL NOTIFY THE CONSTRUCTION DIVISION BY TELEPHONE, MADISON 9-4171, EXTBUS/51 AT LEAST TWENTY-FOUR HOURS BEFORE STARTING ANY WORK UNDER THIS CONTRACT.
  16. STANDARD SPECIFICATIONS DATED OCTOBER 25, 1961 SHALL APPLY IN THE CONSTRUCTION OF THIS PROJECT.
  17. "SEWERS IN FILLED AREAS"
    - a) NO CONSTRUCTION WILL BE PERMITTED IN FILLED AREA UNLESS ACCEPTABLE CERTIFICATION IS SUBMITTED TO THE CONSTRUCTION DIVISION OF THE COUNTY ENGINEER'S DEPARTMENT THAT RELATIVE COMPACTION IS GREATER THAN 90%.
    - b) IF COMPACTION IS LESS THAN 90% THE SEWER MUST BE CRADLED AS SHOWN IN THE PLANS PER S-117-1016.
    - c) IF COMPACTION IS GREATER THAN 90%, NEITHER CRADLING NOR SPECIAL MANHOLE BASES WILL BE REQUIRED. HOWEVER JOINT COMPOUND OR "WEDGE-LOCK" OR "SPEED-SEAL" MUST BE SUBSTITUTED FOR CEMENT MORTAR FOR ALL JOINTS IN FILLED AREAS.
  18. ON LOTS WITH STATION SHOWN IN CIRCLE, THE HOUSE LATERAL SHALL NOT BE CONSTRUCTED UPSTREAM OF THAT STATION.

DOUBLE SCALE VERTICALLY

COLLECT CHARGES AS INDICATED 77.77 Dollars 1-11-62

31843



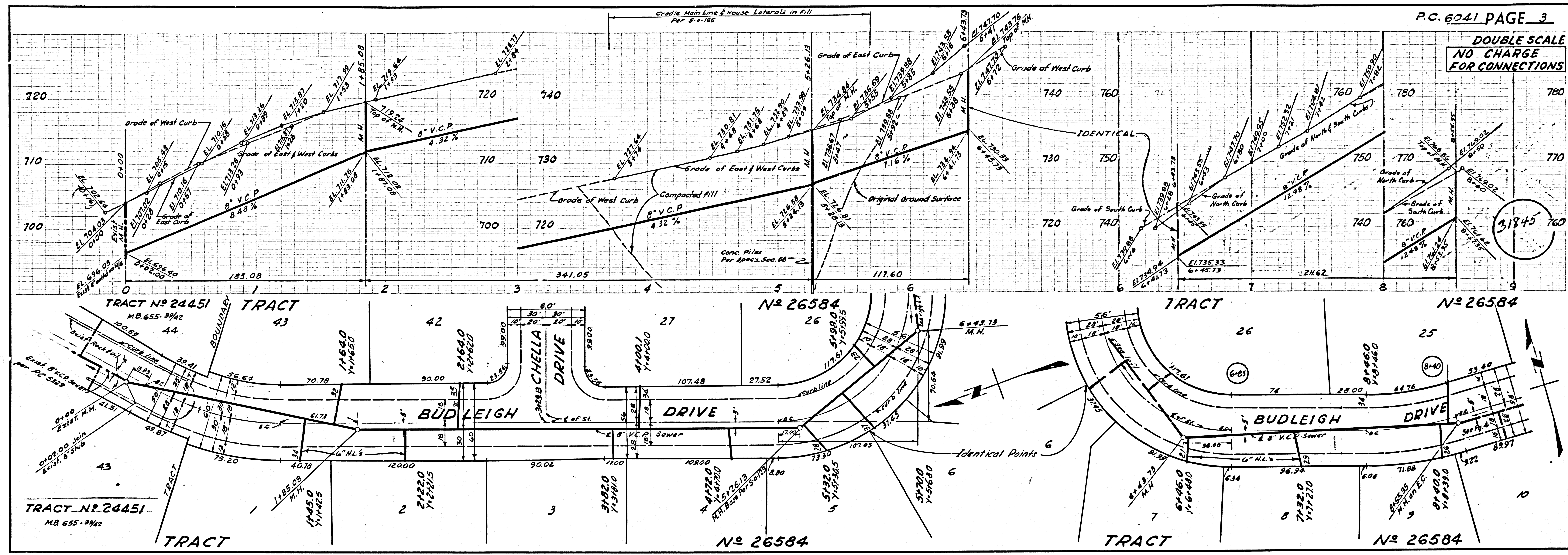
DOUBLE SCALE NO CHARGE FOR CONNECTIONS

31844

159CL M8 S0284

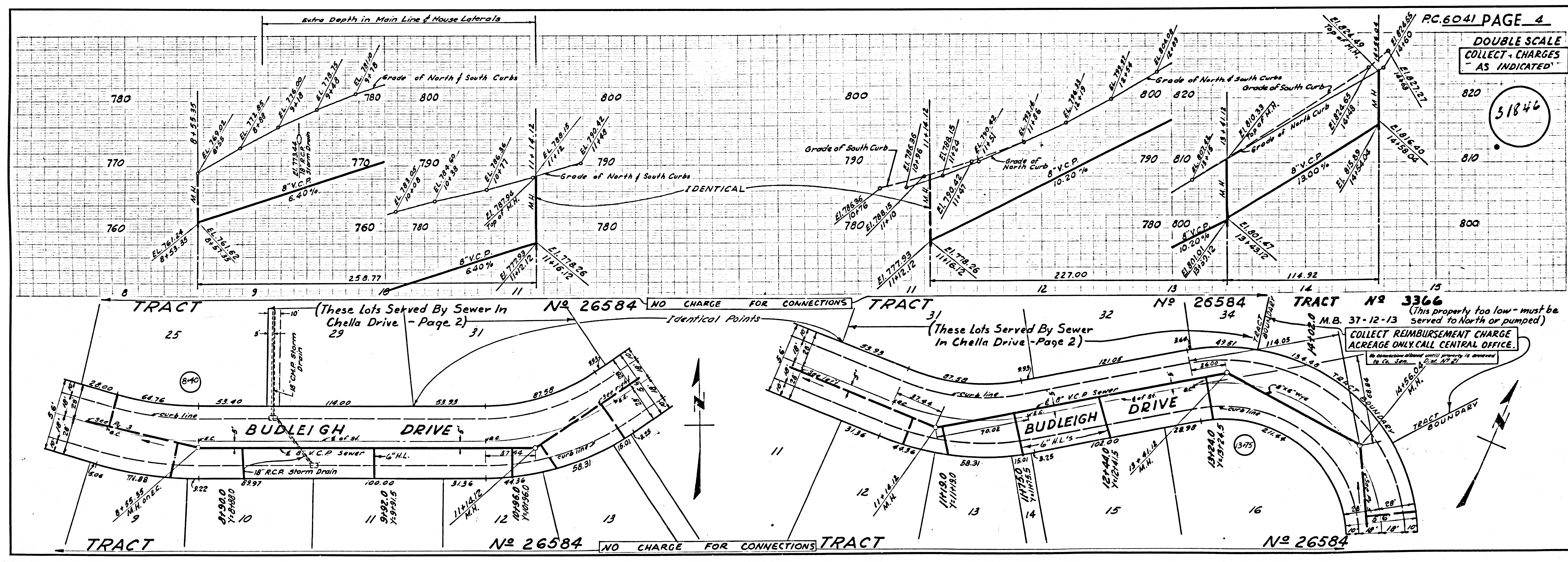
DOUBLE SCALE  
NO CHARGE  
FOR CONNECTIONS

31845



DOUBLE SCALE  
COLLECT CHARGES  
AS INDICATED

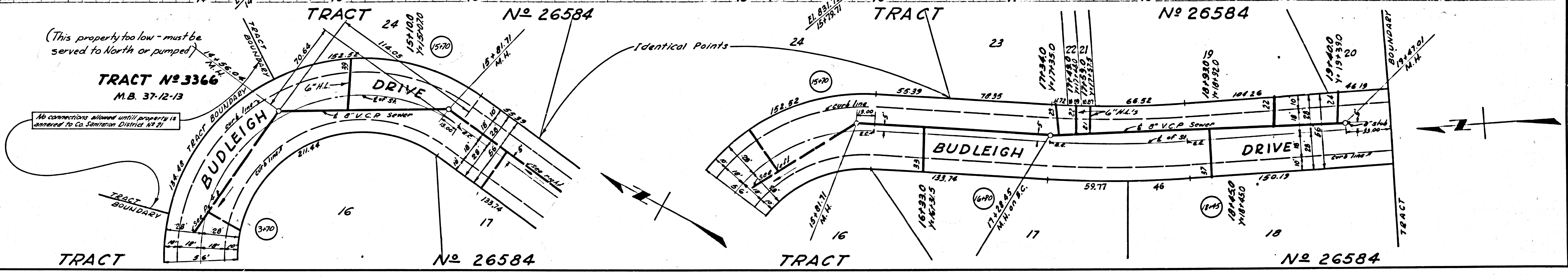
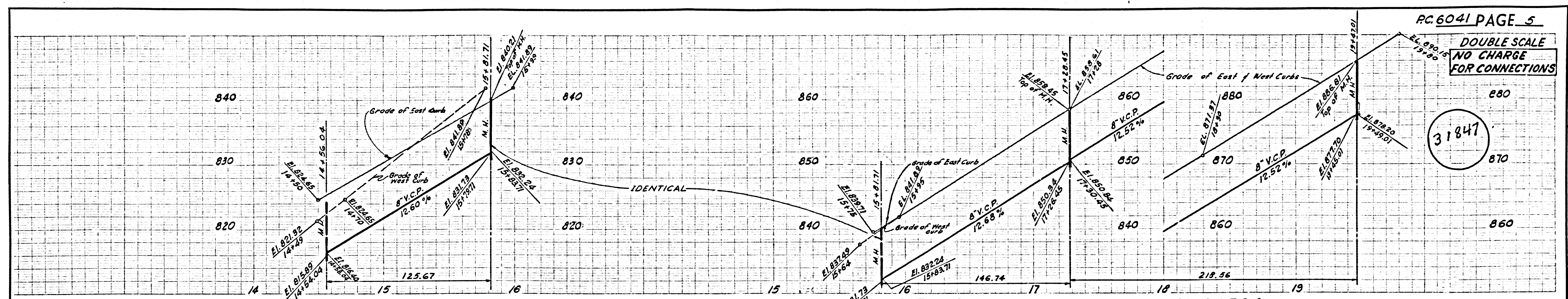
31846



15041 No. 50284

DOUBLE SCALE  
NO CHARGE  
FOR CONNECTIONS

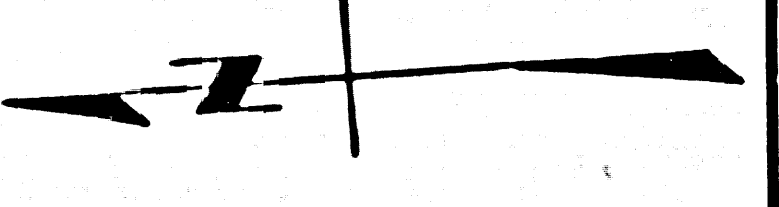
31847



(This property too low - must be served to North or pumped)

**TRACT No 3366**  
M.B. 37-12-13

No connections allowed until property is annexed to Co. Sanitation District #27



PC 6041  
LOCAL No 5228