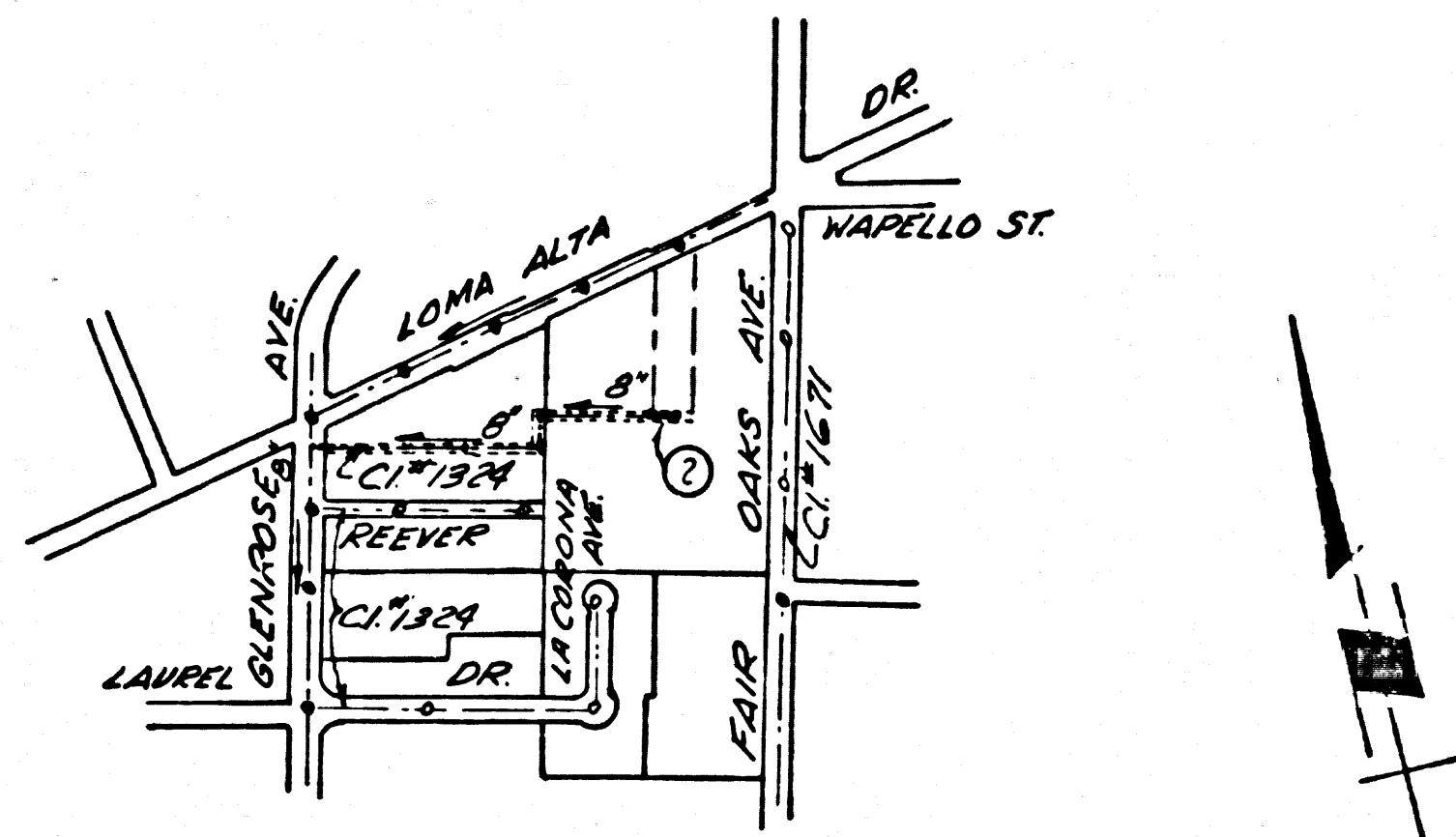


ALTADENA BLDG. DIST. NO. 3

PROFILE ALIGNMENT AND GRADE OF **P.C. 6043**
SANITARY SEWERS PAGE 1
 TO BE CONSTRUCTED IN **JN 0356.98**
SANITARY SEWER EASEMENT
W/O FAIR OAKS AVE.
PRIVATE CONTRACT NO. 6043



INDEX MAP
SCALE 1"=600'
P.C. No 6043

BENCH MARK: SY 5085 Elev. 1531.423
 LOMA ALTA DRIVE & FAIR OAKS AVENUE.
 Spike in N. Cb. Loma Alta Dr. 2' 8" W of Cb.
 Ref. @ N.W. Cor. Loma Alta Dr. & Fair Oaks
 Ave. 1' 18" N of 24' W of 16' 11".
 Pasadena Quad 1955

- NOTES:
1. PROVIDE STAKES ON THE PROPERTY LINE OR PROPERTY LINES PRODUCED AT RIGHT ANGLES TO THE SEWER LINE AT THE CENTER LINE OF EACH MANHOLE.
 2. NO REPRESENTATIVE OF THE COUNTY ENGINEER WILL SURVEY OR LAY OUT ANY PORTION OF THE WORK.
 3. THE OWNER OR HIS AUTHORIZED REPRESENTATIVE SHALL FURNISH THE COUNTY ENGINEER WITH GRADE SHEETS AND STATIONING FOR ALL HOUSE LATERALS AND Y BRANCHES AND SHALL PROVIDE STAKES FOR THEM AT THEIR PROPER LOCATIONS WITH STATIONING PLAINLY MARKED. ANY CHANGE IN LOCATION SHALL BE REQUESTED IN WRITING BY THE OWNER OR HIS REPRESENTATIVE.
 4. THE PRIVATE ENGINEER SHALL FURNISH THE HOUSE LATERAL DEPTH AT THE PROPERTY LINE BELOW THE TOP OF CURB ELEVATION FOR EACH HOUSE LATERAL ON THE GRADE SHEET.
 5. NO REVISIONS SHALL BE MADE IN THESE PLANS WITHOUT THE APPROVAL OF THE COUNTY ENGINEER.
 6. USE STANDARD MATERIALS AND METHODS AS SPECIFIED IN THE SPECIFICATIONS.
 7. USE EXTRA STRENGTH PIPE. ALL PIPE IS STANDARD DEPTH.
 8. USE CEMENT MORTAR OR "WEDGE-LOCK" OR "SEAL" FOR ALL V.C.P. JOINTS PER SPEC'S, SECS. 34 & 40.
 9. RESURFACE ALL TRENCH WITHIN PAVED AREA TO MEET L.A. COUNTY ROAD DEPT. OR CALIF. STATE HIGHWAY REQUIREMENTS IN ACCORDANCE WITH PERMITS.
 10. ENGAGE FOUR FEET OF SEWER AT POINTS OF INTERFERENCE WITH POLES, CASE III, S-172.
 11. MAINTAIN ACCESS TO ALL EXISTING UTILITIES WITH PERMITS AT ALL TIMES. ALL UTILITIES SHALL BE PROTECTED AND MARKED.
 12. ALL SEWER LATERALS SHALL BE BRICK OR V.C.P. WITH 18" DIA. EXCEPT AS NOTED.
 13. FOR ALLOWABLE LEAKAGE TEST USE FORMULA NO. 1, SPEC'S, SEC. 34.
 14. ALL WORK SHALL BE IN ACCORDANCE WITH THE STANDARD SPECIFICATIONS FOR THE CONSTRUCTION OF SEWERS.
 15. THE CONTRACTOR SHALL NOTIFY THE CONSTRUCTION DIVISION BY TELEPHONE, MADISON 9-4747, AT LEAST TWENTY-FOUR HOURS BEFORE STARTING ANY WORK UNDER THIS CONTRACT.
 16. STANDARD SPECIFICATIONS DATED OCT. 25, 1961, APPLY IN THE CONSTRUCTION OF THIS PROJECT.

W.S. 88

1 SHEETS: 2 PAGES
 SCALE: VERT. 1"=4'
 HORIZ. 1"=40'
 OCTOBER, 1961
 PREPARED IN THE OFFICES OF
HILLCREST ENGINEERING CORPORATION
 By Richard H. Frangoli
 REG. C. E. NO. 1832

31296

NOTE:
 GRADES TO WHICH THIS IMPROVEMENT IS TO BE CONSTRUCTED ARE SHOWN ON PLANS AND PROFILES. GRADE POINTS FOR TOP OF CURBS, CENTER LINE OF STREETS, OR CENTER LINE OF ALLEYS ARE SHOWN BY CIRCLES ON PROFILES. AT ALL POINTS BETWEEN DESIGNATED POINTS THE GRADE SHALL BE ESTABLISHED SO AS TO CONFORM TO A STRAIGHT LINE DRAWN BETWEEN SAID DESIGNATED POINTS.
 ELEVATIONS ARE IN FEET ABOVE U.S.C. & G.S. SEA LEVEL DATUM OF 1929.
 THIS DRAWING AND THE DATA HEREON ARE HEREBY MADE A PART OF THE SPECIFICATIONS. WORK SHALL BE CONSTRUCTED ACCORDING TO SPECIFICATIONS ON FILE IN THE OFFICE OF THE COUNTY ENGINEER AND SHALL BE PROSECUTED ONLY IN THE PRESENCE OF THE COUNTY ENGINEER.
 BEFORE WORK CAN BE STARTED THE CONTRACTOR MUST OBTAIN A PERMIT TO EXCAVATE IN COUNTY STREETS FROM THE L.A. COUNTY ROAD DEPT., DISTRICT OFFICE NO. 2, AND PAY A FEE TO THE COUNTY ENGINEER ROOM 200 L.A. COUNTY ENGINE BLDG. 100 N. 1ST ST. SUFFICIENT TO COVER THE COST OF CONSTRUCTION INSPECTION AND RECORD PLANS.
 APPROVAL OF THIS PLAN BY THE COUNTY OF LOS ANGELES DOES NOT CONSTITUTE A REPRESENTATION AS TO THE ACCURACY OF THE LOCATION OF OR THE EXISTENCE OR NON-EXISTENCE OF ANY UNDERGROUND UTILITY PIPE, OR STRUCTURE WITHIN THE LIMITS OF THIS PROJECT. THIS NOTE APPLIES TO ALL PAGES.
 IF WORK IS TO BE DONE IN A STATE HIGHWAY, A PERMIT MUST BE OBTAINED FROM THE STATE OF CALIFORNIA, DIVISION OF HIGHWAYS, 128 SOUTH SPRING STREET.

COUNTY OF LOS ANGELES, CALIFORNIA
 APPROVED, JOHN A. LAMBIE, COUNTY ENGINEER
 APPROVED, Richard H. Frangoli, CHIEF ENGINEER
 CO. SAN. DIST. NO. 12
 BY Richard H. Frangoli, SANITATION ENGINEER
 BY R. P. Bennett, OFFICE ENGINEER
 CHECKED BY W. W. Under, 11/28/61
 OFFICE OF COUNTY ENGINEER, REG. C. E. NO. 9404
 SUBMITTED N. J. Brander, SAN GABRIEL VALLEY REGIONAL ENGINEER

NO CHARGE FOR CONNECTIONS
A. J. Albertson 11/28/61

NO WELL WITHIN 200 FT. OF SEWER
 N.T.

NO CONNECTIONS FOR THE DISPOSAL OF INDUSTRIAL WASTES SHALL BE MADE TO SEWERS SHOWN ON THESE DRAWINGS WITHOUT WRITTEN PERMISSION FROM THE CHIEF ENGINEER AND GENERAL MANAGER OF THE COUNTY SANITATION DISTRICTS.

P.C. 6043 PAGE 2

NO CHARGE FOR CONNECTIONS

31297

