

SAN DIMAS BLDG. DIST. NO. 10

PROFILE ALIGNMENT AND GRADE OF P.C. 6047

SANITARY SEWERS PAGE 1

TO BE CONSTRUCTED IN

J.N. 0357-01

TRACT NO. 26850

PRIVATE CONTRACT NO. 6047

W.S. 48

2 SHEETS; 3 PAGES

SCALE: VERT. 1" = 4'

HORIZ. 1" = 40'

OCTOBER, 1961

PREPARED IN THE OFFICES OF

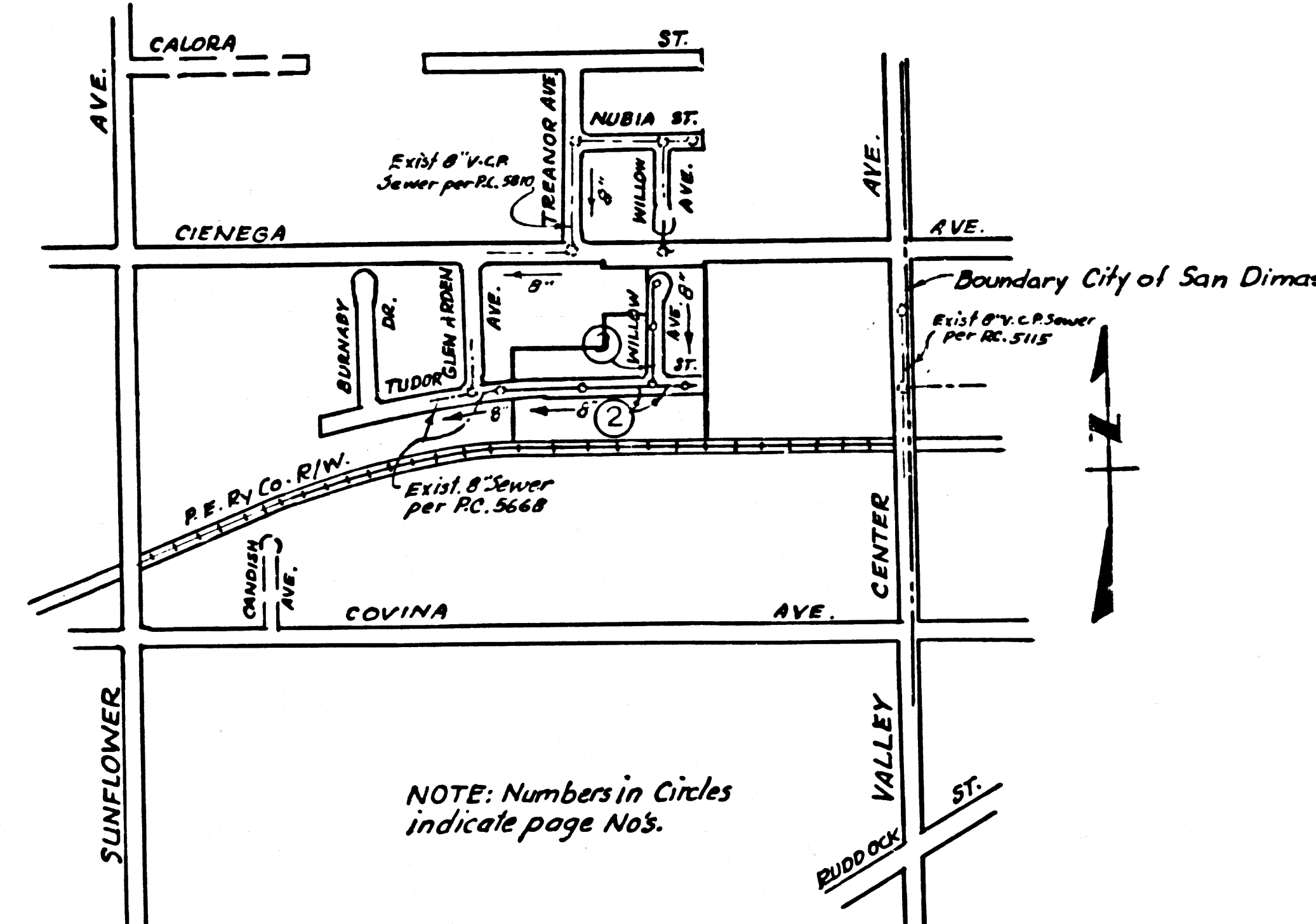
HILLCREST ENGINEERING CORPORATION

By: *Karel H. Tonglet*

KAREL H. TONGLET, REG. C. E. NO. 1832

FOR LEGEND SEE PLAN NO. S-A-64

31747



INDEX MAP  
SCALE 1" = 600'  
TRACT NO. 26850  
P.C. 6047

BM. SG. 267-A ELEV. 810.643  
ARROW HIGHWAY & VALLEY CENTER AVE.  
L&T in S. Curb Arrow Hwy 42'± S of E of  
Arrow Hwy & 68'± E of Valley Center Ave.  
SAN DIMAS QUAD. (ADJ. 1960)

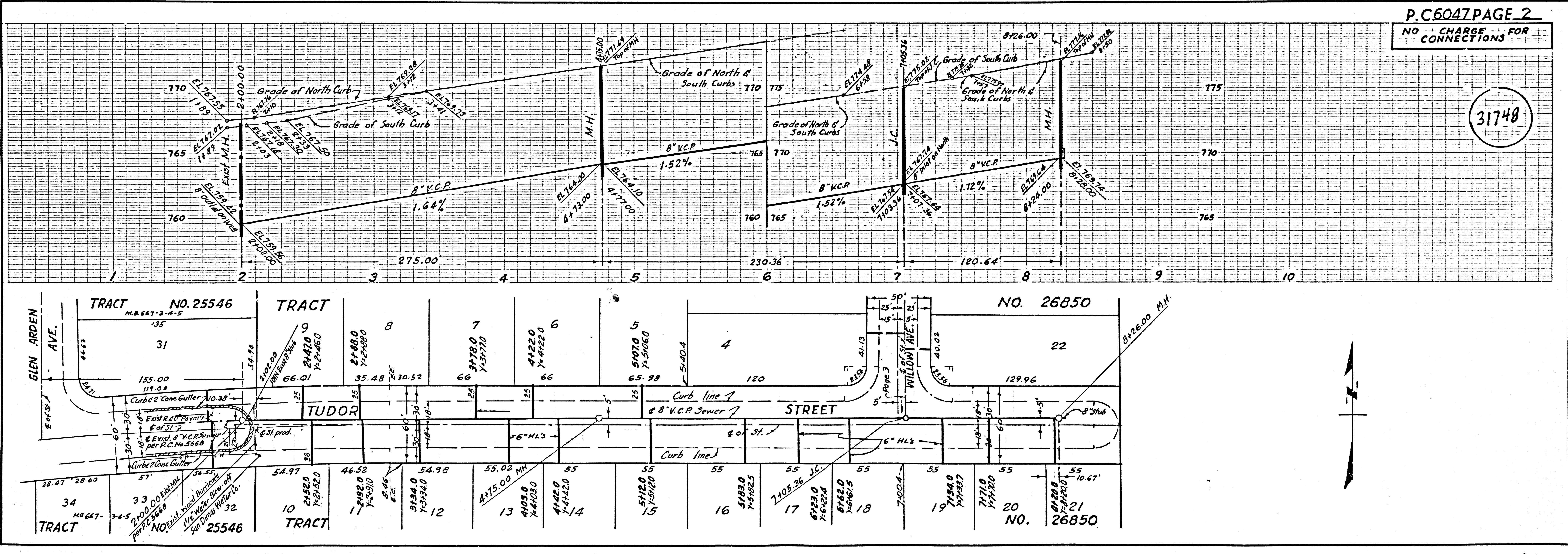
NO CHARGE FOR CONNECTIONS  
*7.27.61* 12-21-61

- NOTES:
1. PROVIDE STAKES ON THE PROPERTY LINE OR PROPERTY LINES PRODUCED AT RIGHT ANGLES TO THE SEWER LINE AT THE CENTER LINE OF EACH MANHOLE.
  2. NO REPRESENTATIVE OF THE COUNTY ENGINEER WILL SURVEY OR LAY OUT ANY PORTION OF THE WORK.
  3. THE OWNER OR HIS AUTHORIZED REPRESENTATIVE SHALL FURNISH THE COUNTY ENGINEER WITH GRADE SHEETS AND STATIONING FOR ALL HOUSE LATERALS AND Y BRANCHES AND SHALL PROVIDE STAKES FOR THEM AT THEIR PROPER LOCATIONS WITH STATIONING PLAINLY MARKED. ANY CHANGE IN LOCATION SHALL BE REQUESTED IN WRITING BY THE OWNER OR HIS REPRESENTATIVE.
  4. THE PRIVATE ENGINEER SHALL FURNISH THE HOUSE LATERAL DEPTH AT THE PROPERTY LINE BELOW THE TOP OF CURB ELEVATION FOR EACH HOUSE LATERAL ON THE GRADE SHEET.
  5. NO REVISIONS SHALL BE MADE IN THESE PLANS WITHOUT THE APPROVAL OF THE COUNTY ENGINEER.
  6. USE STANDARD MANHOLE FRAMES AND COVERS, S-117.
  7. USE EXTRA STRENGTH PIPE, ALL PIPE STANDARD DEPTH.
  8. USE CEMENT MORTAR OR "WEDGE-LOCK" OR "SEAL" FOR ALL V.C.P. JOINTS PER SPEC'S, SECS. 36 & 48.
  9. RESURFACE ALL TRENCH WITHIN PAVED AREA TO MEET L.A. COUNTY ROAD DEPT. OR CALIF. STATE HIGHWAY REQUIREMENTS IN ACCORDANCE WITH PERMITS.
  10. ENCASE FOUR FEET OF SEWER AT POINTS OF INTERFERENCE WITH POLES, CASE III, S-172.
  11. HOUSE LATERALS TO BE CONSTRUCTED WITH INVERTS AT PROPERTY LINE 8 FEET BELOW CURB GRADE.
  12. ALL STRUCTURES SHALL BE BRICK SEWER STRUCTURES, S-104. USE CAST CONCRETE MANHOLE PER S-101-135, OR S-101-173 MAY BE USED AS ALTERNATE IN LOCATIONS APPROVED BY THE COUNTY ENGINEER.
  13. ALLOWABLE LEAKAGE TEST USE FORMULA NO. 1, SPEC'S, SEC. 54.
  14. MANHOLE TOPS IN UNIMPROVED RIGHTS-OF-WAY TO BE SIX INCHES ABOVE FINISHED GRADE.
  15. THE CONTRACTOR SHALL NOTIFY THE CONSTRUCTION DIVISION BY TELEPHONE, MADISON 9-477, EXT. 8153 AT LEAST TWENTY-FOUR HOURS BEFORE STARTING ANY WORK UNDER THIS CONTRACT.
  16. STANDARD SPECIFICATIONS DATED OCTOBER 25, 1961 SHALL BE USED IN THE CONSTRUCTION OF THIS PROJECT.

NOTE:  
GRADES TO WHICH THIS IMPROVEMENT IS TO BE CONSTRUCTED ARE SHOWN ON PLANS AND PROFILES. GRADE POINTS FOR TOP OF CURB, CENTER LINE OF STREETS, OR CENTER LINE OF ALLEYS ARE SHOWN BY CIRCLES ON PROFILES. AT ALL POINTS BETWEEN DESIGNATED POINTS THE GRADE SHALL BE ESTABLISHED SO AS TO CONFORM TO A STRAIGHT LINE DRAWN BETWEEN SAID DESIGNATED POINTS.  
ELEVATIONS ARE IN FEET ABOVE U.S.C. & G.S. SEA LEVEL DATUM OF 1929.  
THIS DRAWING AND THE DATA HEREON ARE HEREBY MADE A PART OF THE SPECIFICATIONS.  
WORK SHALL BE CONSTRUCTED ACCORDING TO SPECIFICATIONS ON FILE IN THE OFFICE OF THE COUNTY ENGINEER AND SHALL BE PROSECUTED ONLY IN THE PRESENCE OF THE COUNTY ENGINEER.  
BEFORE WORK CAN BE STARTED THE CONTRACTOR MUST OBTAIN A PERMIT TO EXCAVATE IN COUNTY STREETS FROM THE L. A. COUNTY ROAD DEPT., DISTRICT OFFICE NO. 1, AND PAY A FEE TO THE COUNTY ENGINEER, ROOM 310 COUNTY ENGINEER'S BUILDING, 106 W. SECOND ST. SUFFICIENT TO COVER THE COST OF CONSTRUCTION INSPECTION AND RECORD PLANS.  
APPROVAL OF THIS PLAN BY THE COUNTY OF LOS ANGELES DOES NOT CONSTITUTE A REPRESENTATION AS TO THE ACCURACY OF THE LOCATION OR OF THE EXISTENCE OR NON-EXISTENCE OF ANY UNDERGROUND UTILITY PIPE, OR STRUCTURE WITHIN THE LIMITS OF THIS PROJECT. THIS NOTE APPLIES TO ALL PAGES.  
IF WORK IS TO BE DONE IN A STATE HIGHWAY, A PERMIT MUST BE OBTAINED FROM THE STATE OF CALIFORNIA, DIVISION OF HIGHWAYS, 120 SOUTH SPRING STREET.

COUNTY OF LOS ANGELES, CALIFORNIA  
APPROVED, JOHN A. LAMBIE, COUNTY ENGINEER APPROVED, J.D. PARKHURST, CHIEF ENGINEER  
BY: *R. E. Kline* ASSISTANT SANITATION ENGINEER BY: *J. C. ...* OFFICE ENGINEER  
CHECKED BY: *J. K. ...* 12-21-61  
OFFICE OF COUNTY ENGINEER, REG. C. E. NO. 3401  
SUBMITTED *W. C. ...* 12-20-61  
SAN DIMAS REGIONAL OFFICE

NO CONNECTIONS FOR THE DISPOSAL OF INDUSTRIAL WASTES SHALL BE MADE TO SEWERS SHOWN ON THESE DRAWINGS WITHOUT WRITTEN PERMISSION FROM THE CHIEF ENGINEER AND GENERAL MANAGER OF THE COUNTY SANITATION DISTRICTS.

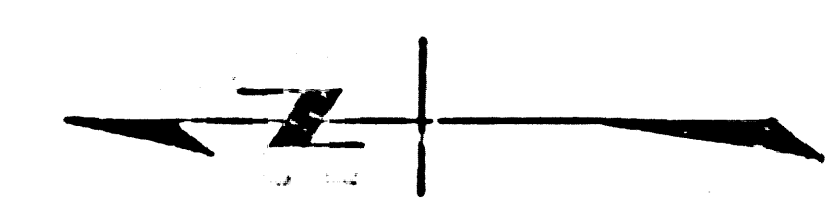
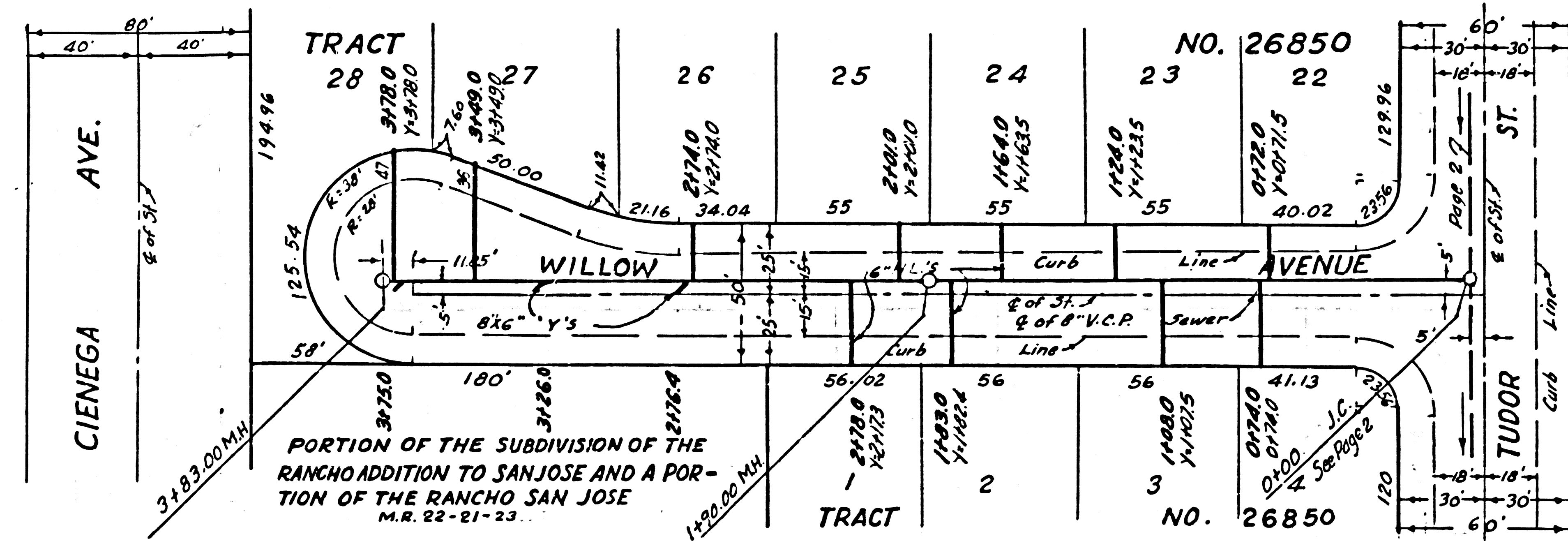
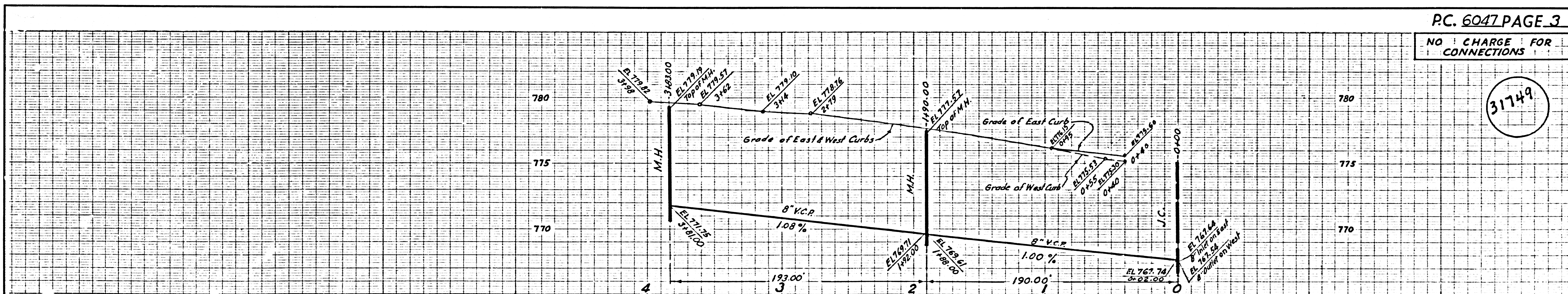


P.C. 6047 PAGE 2  
NO CHARGE FOR CONNECTIONS

31748

NO CHARGE FOR CONNECTIONS

31749



PROPERTY OF THE COUNTY OF LOS ANGELES

7408 29