

CITY OF COMMERCE BLDG. DIST. NO. 6.01

PROFILE ALIGNMENT AND GRADE OF **P.C. 6050**
SANITARY SEWERS PAGE 1
 TO BE CONSTRUCTED IN
SEWER RELOCATION N.W. OF GARFIELD AVE.
PRIVATE SEWER
PRIVATE CONTRACT NO. 6050

BENCH MARK N^o 8MSD2125 - ELEV. 148.560
 Garfield Avenue & E. 26th St. S.E. Cor.
 Bt. Spk in Cb. 5' E. of E. end Curb Return.
 PER. FB 2524 - PAGE 26

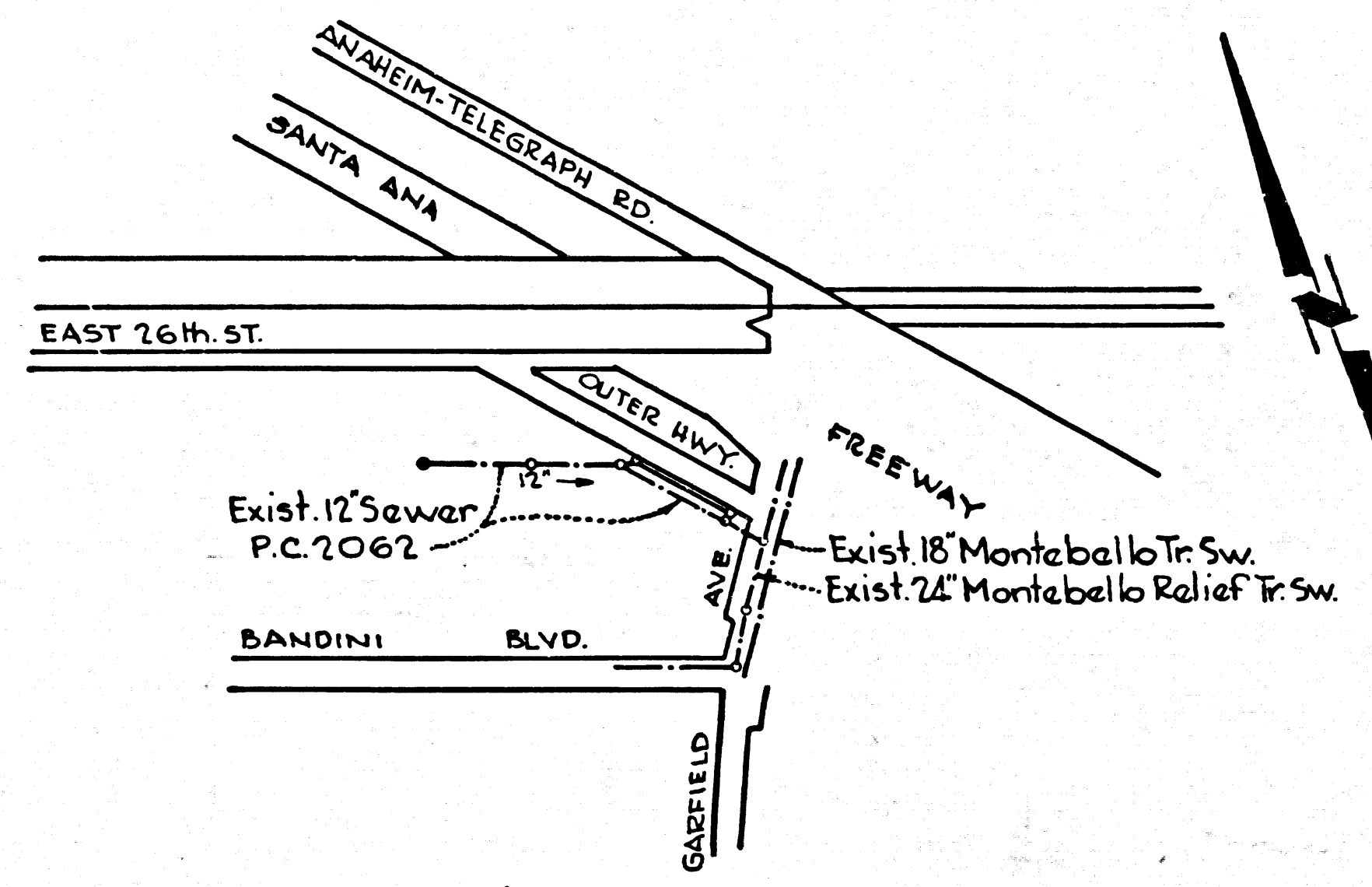
- NOTES:
1. PROVIDE STAKES ON THE PROPERTY LINE OR PROPERTY LINES PRODUCED AT RIGHT ANGLES TO THE SEWER LINE AT THE CENTER LINE OF EACH MANHOLE.
 2. NO REPRESENTATIVE OF THE CITY ENGINEER WILL SURVEY OR LAY OUT ANY PORTION OF THE WORK.
 3. THE OWNER OR HIS AUTHORIZED REPRESENTATIVE SHALL FURNISH THE COUNTY ENGINEER WITH GRADE SHEETS AND STATIONING FOR ALL HOUSE LATERALS AND Y BRANCHES AND SHALL PROVIDE STAKES FOR THEM AT THEIR PROPER LOCATIONS WITH STATIONING PLAINLY MARKED. ANY CHANGE IN LOCATION SHALL BE REQUESTED IN WRITING BY THE OWNER OR HIS REPRESENTATIVE.
 4. THE PRIVATE ENGINEER SHALL FURNISH THE HOUSE LATERAL DEPTH AT THE PROPERTY LINE BELOW THE TOP OF CURB ELEVATION FOR EACH HOUSE LATERAL ON THE GRADE SHEET.
 5. NO REVISIONS SHALL BE MADE IN THESE PLANS WITHOUT THE APPROVAL OF THE CITY ENGINEER.
 6. USE STANDARD MANHOLE FRAMES AND COVERS, S-117A.
 7. USE EXTRA STRENGTH PIPE. ALL PIPE IS STANDARD DEPTH EXCEPT AS NOTED.
 8. USE CEMENT MORTAR OR "WEDGE-LOCK" OR "SPEED-SEAL" FOR ALL V.P. JOINTS PER SPEC., SECS. 34 & 40.
 9. RESURFACE ALL TRENCH WITHIN PAVED AREA TO MEET L.A. COUNTY ROAD DEPT. OR CALIF. STATE HIGHWAY REQUIREMENTS IN ACCORDANCE WITH PERMITS.
 10. ENCASE FOUR FEET OF SEWER AT POINTS OF INTERFERENCE WITH POLES, CASE III, S-172.
 11. HOUSE LATERALS TO BE CONSTRUCTED WITH INVERTS AT PROPERTY LINE FEET BELOW CURB GRADE UNLESS AS NOTED.
 12. ALL STRUCTURES SHALL BE BRICK SEWER STRUCTURES, S-104.
 13. FOR ALLOWABLE LEAKAGE TEST USE FORMULA NO. 1, SPEC., SEC. 54.
 14. MANHOLE TOPS IN UNIMPROVED RIGHTS-OF-WAY TO BE SIX INCHES ABOVE FINISHED GRADE.
 15. THE CONTRACTOR SHALL NOTIFY THE CONSTRUCTION DIVISION BY TELEPHONE, MADISON 9-4747, EXT. 8155, AT LEAST TWENTY-FOUR HOURS BEFORE STARTING ANY WORK UNDER THIS CONTRACT.
 16. STANDARD SPECIFICATIONS DATED OCTOBER 25, 1961 APPLY IN THE CONSTRUCTION OF THIS PROJECT.

W.S. 36
 1 SHEETS; 2 PAGES
 SCALE: VERT. 1" = 4'
 HORIZ. 1" = 40'
 NOVEMBER, 1961
 PREPARED IN THE OFFICES OF
 VIC CASE

31675

By: *J. Macchione*
 REG. C. E. NO. 9675

FOR LEGEND SEE PLAN NO. S-A-64



INDEX MAP
 P.C. 6050
 Scale - 1"=600'

NO CONNECTIONS FOR THE DISPOSAL OF INDUSTRIAL WASTES SHALL BE MADE TO SEWERS SHOWN ON THESE DRAWINGS WITHOUT WRITTEN PERMISSION FROM THE CHIEF ENGINEER AND GENERAL MANAGER OF THE COUNTY SANITATION DISTRICTS.

NO CHARGE FOR CONNECTIONS
A. L. Albertson 11/13/61

APPROVED BY *J. Stewart* DATE 11/15/61
 INDUSTRIAL WASTE DIVISION

NOTE:
 GRADES TO WHICH THIS IMPROVEMENT IS TO BE CONSTRUCTED ARE SHOWN ON PLANS AND PROFILES. GRADE POINTS FOR TOP OF CURBS, CENTER LINE OF STREETS, OR CENTER LINE OF ALLEYS ARE SHOWN BY CIRCLES ON PROFILES. AT ALL POINTS BETWEEN DESIGNATED POINTS THE GRADE SHALL BE ESTABLISHED SO AS TO CONFORM TO A STRAIGHT LINE DRAWN BETWEEN SAID DESIGNATED POINTS.
 ELEVATIONS ARE IN FEET ABOVE U.S.C. & G.S. SEA LEVEL DATUM OF 1929.
 THIS DRAWING AND THE DATA HEREON ARE HEREBY MADE A PART OF THE SPECIFICATIONS.
 WORK SHALL BE CONSTRUCTED ACCORDING TO SPECIFICATIONS ON FILE IN THE OFFICE OF THE CITY ENGINEER AND SHALL BE PROSECUTED ONLY IN THE PRESENCE OF THE CITY ENGINEER.
 BEFORE WORK CAN BE STARTED, THE CONTRACTOR MUST OBTAIN A PERMIT TO EXCAVATE IN CITY STREETS FROM THE L.A. COUNTY ROAD DEPT., CENTRAL OFFICE NO. 2262, 50 ATLANTIC BLVD., L.A. 22, CALIF., SUFFICIENT TO COVER THE COST OF CONSTRUCTION INSPECTION AND RECORD PLANS.
 APPROVAL OF THIS PLAN BY THE CITY OF COMMERCE DOES NOT CONSTITUTE A REPRESENTATION AS TO THE ACCURACY OF THE LOCATION OF OR THE EXISTENCE OR NON-EXISTENCE OF ANY UNDERGROUND UTILITY PIPE, OR STRUCTURE WITHIN THE LIMITS OF THIS PROJECT. THIS NOTE APPLIES TO ALL PAGES.
 IF WORK IS TO BE DONE IN A STATE HIGHWAY, A PERMIT MUST BE OBTAINED FROM THE STATE OF CALIFORNIA, DIVISION OF HIGHWAYS, 126 SOUTH SPRING STREET.

CITY OF COMMERCE, CALIFORNIA
 APPROVED, JOHN A. LAMBIE, CITY ENGINEER APPROVED, J. D. PARKHURST, CHIEF ENGINEER
 BY: *R. E. Kline* ASST. SANITATION ENGINEER BY: *J. Paulsen* OFFICE ENGINEER
 CHECKED BY: *B. F. Worling 11-16-61*
 OFFICE OF CITY ENGINEER, REG. C. E. NO. 11636

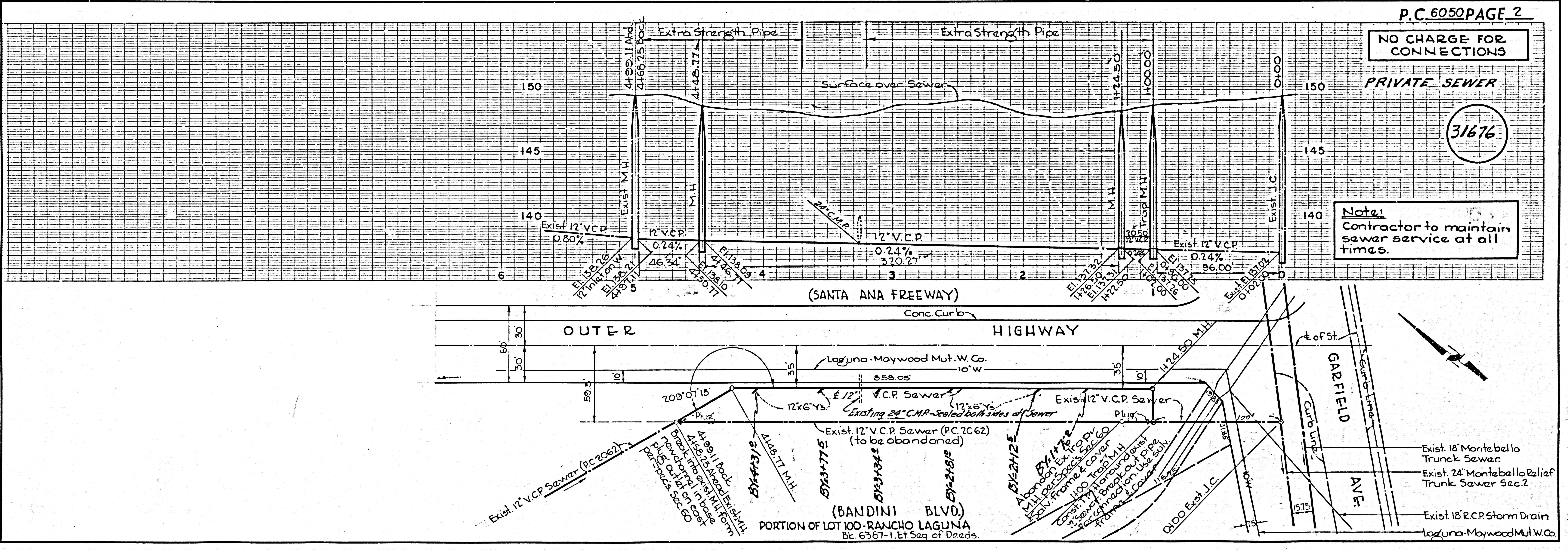
SUBMITTED: *N. P. Bravender*
 SAN GABRIEL VALLEY REGIONAL ENGINEER

NO CHARGE FOR CONNECTIONS

PRIVATE SEWER

31676

Note:
 Contractor to maintain sewer service at all times.



(BC - 6050 - SEWER RELOCATION N.W. OF GARFIELD AVE.)

(P.C. 6050 - SEWER RELOCATION N.W. OF GARFIELD AVE.)