

LA PUENTE BLDG. DIST. NO. 2

TRACT N° 26841
PRIVATE CONTRACT NO. 6054

W.S. 37

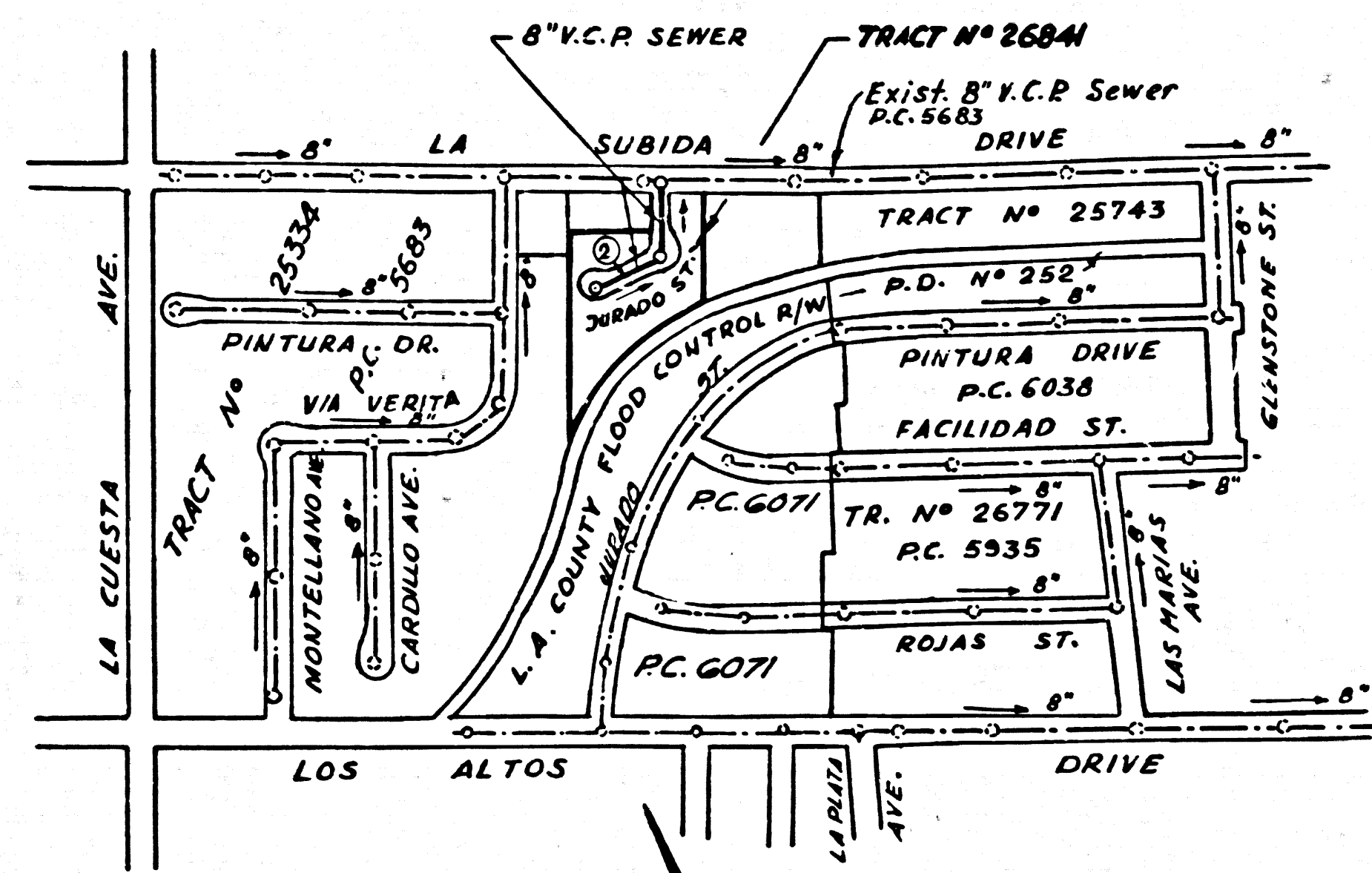
1 SHEET : 2 PAGES

SCALE: VERT. 1" = 6'
HORIZ. 1" = 40' OCTOBER, 1961
PREPARED IN THE OFFICES OF

By: Robert R. Flores
REG. C. E. NO. 11349

FOR LEGEND SEE PLAN NO. S-A-64

33062



KEY MAP
TRACT N° 26841
P.C. 6054 SCALE: 1" = 500'

NOTE:
THE EXISTENCE AND APPROXIMATE LOCATION OF UNDERGROUND UTILITIES OR STRUCTURES SHOWN ON THESE PLANS WERE DETERMINED BY A SEARCH OF THE AVAILABLE PUBLIC RECORD TO THE BEST OF OUR KNOWLEDGE THERE ARE NO EXISTING UNDERGROUND UTILITIES OR STRUCTURES EXCEPT AS SHOWN ON THIS MAP.
THE CONTRACTOR IS REQUIRED TO TAKE DUE PRECAUTIONARY MEASURES TO PROTECT THE UTILITIES OR STRUCTURES SHOWN AND ANY OTHER UTILITIES OF STRUCTURES AT THE SITE. IT SHALL BE THE CONTRACTOR'S RESPONSIBILITY TO NOTIFY THE OWNERS OF THE UTILITIES OR STRUCTURES CONCERNED BEFORE STARTING WORK.

BENCH MARK:
S.G. 1609 Fd. L & BN in S.W. Cor. of Weir
Box @ N.E. Cor. of La Cuesta Ave. &
La Subida Dr. ± 27' N. & ± 31' E. ± 1/4
Int. Mkd. "B.M. J2"
Elev. 563.121 Whittier 1955

- NOTES:
1. PROVIDE STAKES ON THE PROPERTY LINE OR PROPERTY LINES PRODUCED AT RIGHT ANGLES TO THE SEWER LINE AT THE CENTER LINE OF EACH MANHOLE.
2. NO REPRESENTATIVE OF THE COUNTY ENGINEER WILL SURVEY OR LAY OUT ANY PORTION OF THE WORK.
3. THE PRIVATE ENGINEER SHALL FURNISH THE COUNTY ENGINEER WITH GRADE SHEETS AND STATIONING FOR ALL HOUSE LATERALS AND Y BRANCHES AND SHALL PROVIDE STAKES FOR THEM AT THEIR PROPER LOCATIONS WITH STATIONING PLAINLY MARKED. ALL HOUSE LATERALS SHALL BE CONVEYED IN A STRAIGHT ALIGNMENT AT RIGHT ANGLES FROM THE MAIN LINE TO THE HOUSE. ALL CHANGES IN ALIGNMENT SHALL BE REQUESTED IN WRITING BY THE PRIVATE ENGINEER.
4. THE PRIVATE ENGINEER SHALL FURNISH THE HOUSE LATERAL DEPTH AT THE PROPERTY LINE BELOW THE TOP OF CURB ELEVATION FOR EACH HOUSE LATERAL ON THE GRADE SHEET.
5. NO REVISIONS SHALL BE MADE IN THESE PLANS WITHOUT THE APPROVAL OF THE COUNTY ENGINEER.
6. USE STANDARD MANHOLE FRAMES AND COVERS, 5-11T.
7. USE EXTRA STRENGTH PIPE, ALL PIPE STANDARD DEPTH UNLESS OTHERWISE NOTED.
8. USE MECHANICAL COMPRESSION JOINTS FOR ALL P.C.P. JOINTS PER SPEC'S, SECS. M, N, & O.
9. RESURFACE ALL TRENCH WITHIN PAVED AREA TO MEET LA. COUNTY ROAD DEPT. OR CALIF. STATE HIGHWAY REQUIREMENTS IN ACCORDANCE WITH PERMITS.
10. ENCASE FOUR FEET OF SEWER AT POINTS OF INTERFERENCE WITH POLES, CASE III, 5-6-172.
11. HOUSE LATERALS TO BE CONSTRUCTED WITH INVERTS AT PROPERTY LINE 6 FEET BELOW CURB GRADE.
12. MANHOLES SHALL BE BRICK SEWER STRUCTURES PER S-9-104. PRECAST CONCRETE MANHOLES PER S-4-135 OR S-4-173 MAY BE USED AS AN ALTERNATE IN LOCATIONS APPROVED BY THE COUNTY ENGINEER.
13. FOR ALLOWABLE LEAKAGE TEST USE FORMULA NO. 2, SPEC'S, SEC. 54.
14. ALL STATE AND LOCAL TRENCH SAFETY ORDERS WILL BE RIGIDLY ENFORCED.
15. THE CONTRACTOR SHALL NOTIFY THE CONSTRUCTION DIVISION BY TELEPHONE, MADISON 9-4191, EXT. 8-551 AT LEAST TWENTY-FOUR HOURS BEFORE STARTING ANY WORK UNDER THIS CONTRACT.
16. STANDARD SPECIFICATIONS DATED MAY 25 1961 APPLY IN THE CONSTRUCTION OF THIS PROJECT.

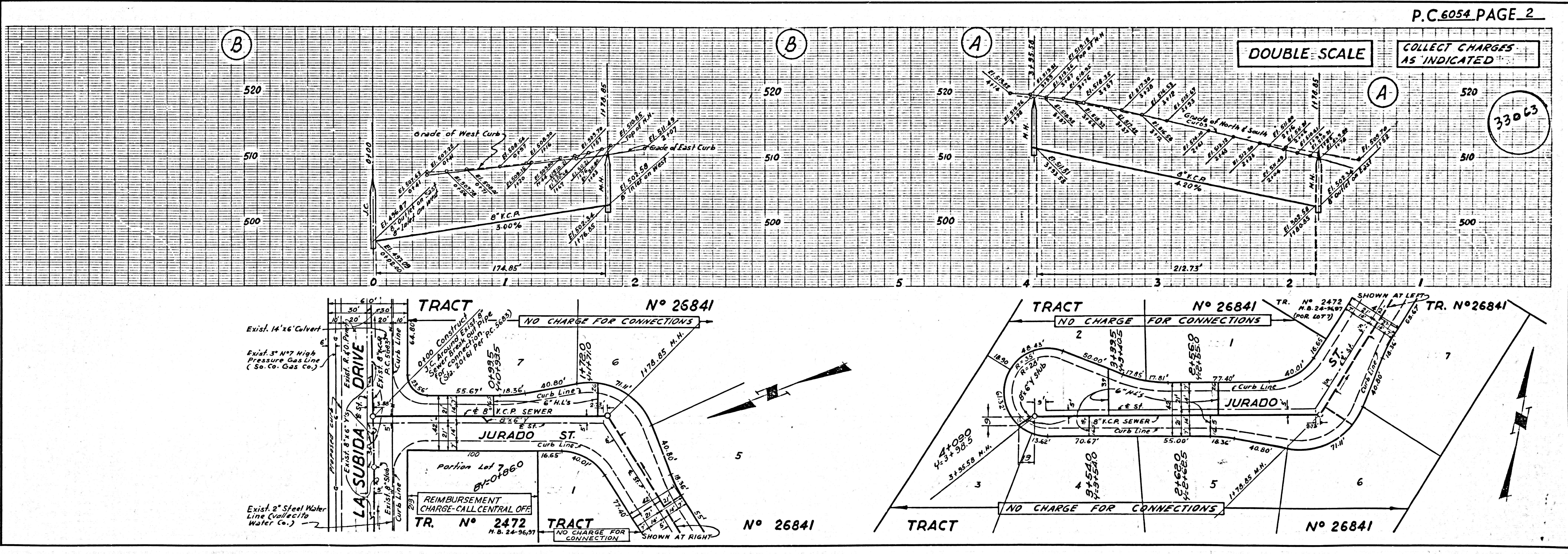
DOUBLE SCALE VERTICAL

NO CONNECTIONS FOR THE DISPOSAL OF INDUSTRIAL WASTES SHALL BE MADE TO SEWERS SHOWN ON THESE DRAWINGS WITHOUT WRITTEN PERMISSION FROM THE CHIEF ENGINEER AND GENERAL MANAGER OF THE COUNTY SANITATION DISTRICTS.

COLLECT CHARGES AS INDICATED
PR Smith 1-9-62

NOTE:
GRADES TO WHICH THIS IMPROVEMENT IS TO BE CONSTRUCTED ARE SHOWN ON PLANS AND PROFILES. GRADE POINTS FOR TOP OF CURBS, CENTER LINE OF STREETS, OR CENTER LINE OF ALLEYS ARE SHOWN BY CIRCLES ON PROFILES. AT ALL POINTS BETWEEN DESIGNATED POINTS THE GRADE SHALL BE ESTABLISHED SO AS TO CONFORM TO A STRAIGHT LINE DRAWN BETWEEN SAID DESIGNATED POINTS.
ELEVATIONS ARE IN FEET ABOVE U.S.C. & G.S. SEA LEVEL DATUM OF 1929.
THIS DRAWING AND THE DATA HEREON ARE HEREBY MADE A PART OF THE SPECIFICATIONS. WORK SHALL BE CONSTRUCTED ACCORDING TO SPECIFICATIONS ON FILE IN THE OFFICE OF THE COUNTY ENGINEER AND SHALL BE PROSECUTED ONLY IN THE PRESENCE OF THE COUNTY ENGINEER.
BEFORE WORK CAN BE STARTED THE CONTRACTOR MUST OBTAIN A PERMIT TO EXCAVATE IN COUNTY STREETS FROM THE L.A. COUNTY ROAD DEPT., DISTRICT OFFICE NO. 1, AND PAY A FEE TO THE COUNTY ENGINEER, ROOM 530 COUNTY ENGINEER BUILDING, 108 W. 2ND ST. SUFFICIENT TO COVER THE COST OF CONSTRUCTION INSPECTION AND RECORD PLANS.
APPROVAL OF THIS PLAN BY THE COUNTY OF LOS ANGELES DOES NOT CONSTITUTE A REPRESENTATION AS TO THE ACCURACY OF THE LOCATION OF OR THE EXISTENCE OR NON-EXISTENCE OF ANY UNDERGROUND UTILITY PIPE, OR STRUCTURE WITHIN THE LIMITS OF THIS PROJECT. THIS NOTE APPLIES TO ALL PAGES.
IF WORK IS TO BE DONE IN A STATE HIGHWAY, A PERMIT MUST BE OBTAINED FROM THE STATE OF CALIFORNIA, DIVISION OF HIGHWAYS, 120 SOUTH SPRING STREET.

COUNTY OF LOS ANGELES, CALIFORNIA
APPROVED, JOHN A. LAMBIE, COUNTY ENGINEER APPROVED, J. PARKHURST, CHIEF ENGINEER
BY: Robert R. Flores ASST. SANITATION ENGINEER BY: J. Parkhurst OFFICE ENGINEER
CHECKED BY: SK Wada 1-10-62
OFFICE OF COUNTY ENGINEER, REG. C. E. NO. 7484
SUBMITTED: W.C. Pindler SAN DIMAS REGIONAL ENGINEER



33063