

DOUBLE SCALE
LOMITA BLDG. DIST. NO. 12

PROFILE ALIGNMENT AND GRADE OF
SANITARY SEWERS PAGE 1
TO BE CONSTRUCTED IN
JUN 0357.08

TRACT No 25109

PRIVATE CONTRACT NO. 6060

W.S. 27

6 SHEETS; 11 PAGES

SCALE: VERT. 1"=6' HORIZ. 1"=40'

OCT. 1961

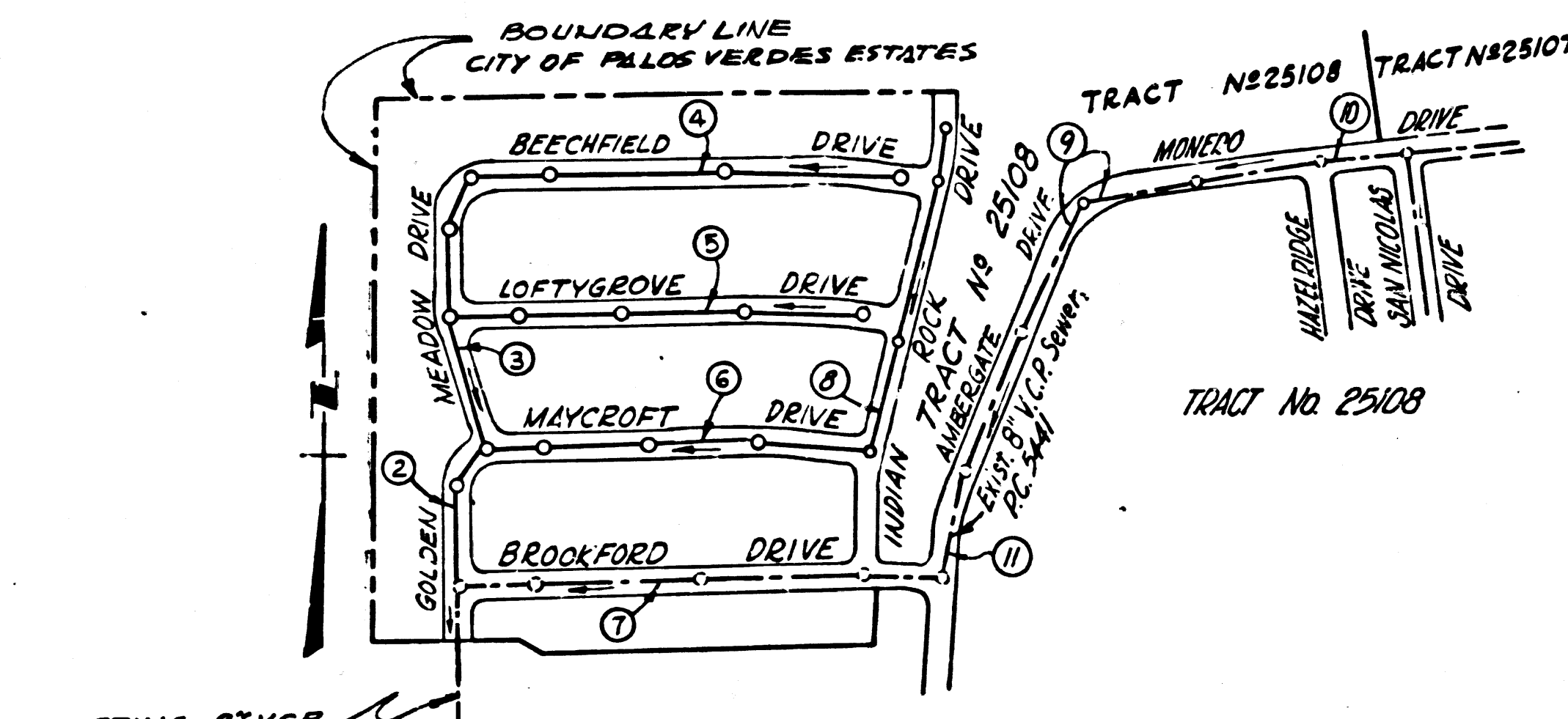
PREPARED IN THE OFFICES OF

ENGINEERING SERVICE CORPORATION

By: *E. J. Smith*
REG. C. E. NO. 3692

FOR LEGEND SEE PLAN NO. S-A-64

Bench Mark: S.Y.4380 2" I.P.
With concrete plug & Spike 12" deep
± 77' West of & of Hawthorne Blvd.
approximately center of long tangent
STA. 29+00 ± 1 mi. North of Crest
Road Elev. 1030.973



INDEX MAP
TRACT No 25109
SCALE: 1"=400'
P.C. 6060

REVISIONS
ADD H.L. AT STA. 15+40 PAGE 10
APPROVED *E. J. Smith* 6-7-61

REVISION
INDIAN ROCK DR. REX FROM 30" to 36"
ADDED 50' H.L. ON INDIAN ROCK DR.
PAGE 8
APPROVED *E. J. Smith* 6-21-61

NO CHARGE FOR CONNECTIONS
E. J. Smith

NO CONNECTIONS FOR THE DISPOSAL OF INDUSTRIAL WASTES SHALL BE MADE TO SEWERS SHOWN ON THESE DRAWINGS WITHOUT WRITTEN PERMISSION FROM THE CHIEF ENGINEER AND GENERAL MANAGER OF THE COUNTY SANITATION DISTRICTS.

- NOTES
- PROVIDE STAKES ON THE PROPERTY LINE OR PROPERTY LINES PRODUCED AT RIGHT ANGLES TO THE SEWER LINE AT THE CENTER LINE OF EACH MANHOLE.
 - NO REPRESENTATIVE OF THE COUNTY ENGINEER WILL SURVEY OR LAYOUT ANY PORTION OF THE WORK.
 - THE OWNER OR HIS AUTHORIZED REPRESENTATIVE SHALL FURNISH THE COUNTY ENGINEER WITH GRADE SHEETS AND STATION FOR ALL HOUSE LATERALS AND Y BRANCHES AND SHALL PROVIDE STAKES FOR THEM AT THEIR PROPER LOCATIONS WITH STATIONING PLAINLY MARKED. ANY CHANGE IN LOCATION SHALL BE REQUESTED IN WRITING BY THE OWNER OR HIS REPRESENTATIVE.
 - NO REVISIONS SHALL BE MADE IN THESE PLANS WITHOUT THE APPROVAL OF THE COUNTY ENGINEER.
 - USE STANDARD MANHOLE FRAMES AND COVERS, S.A. 117, EXCEPT AS NOTED.
 - USE EXTRA STRENGTH PIPE ALL PIPE IN STANDARD DEPTH.
 - USE CEMENT MORTAR OR "WEDGE-LOCK" OR "SAND-SEAL" FOR ALL JCP JOINTS PER SPECIFICATIONS SECTION 36 & 48.
 - RESURFACE ALL TRENCH WITHIN PAVED AREA TO MEET L. A. COUNTY ROAD DEPT. OR CALIF. STATE HIGHWAY DEPT. REQUIREMENTS IN ACCORDANCE WITH PERMITS.
 - ENCASE FOUR FEET OF SEWER AT POINTS OF INTERFERENCE WITH POLES, S.A. 176 CASE III.
 - HOUSE LATERALS TO BE CONSTRUCTED WITH INVERTS AT PROPERTY LINE 6 FEET BELOW CURB GRADE EXCEPT AS NOTED.
 - ALL STRUCTURES SHALL BE BRICK SEWER STRUCTURES, S.A. 104, EXCEPT AS NOTED.
 - FOR ALLOWABLE LEAKAGE TEST USE FORMULA NO. 1 SPEC'S., SEC. 54.
 - MANHOLE TOPS IN UNIMPROVED RIGHTS-OF-WAY TO BE 6" ABOVE FINISHED GRADE.
 - THE PRIVATE ENGINEER IS TO FURNISH THE HOUSE LATERAL DEPTH AT THE PROPERTY LINE BELOW THE TOP OF CURVE ELEVATION FOR EACH HOUSE LATERAL ON THE GRADE SHEET.
 - THE CONTRACTOR SHALL NOTIFY THE CONSTRUCTION DIVISION BY TELEPHONE, MADISON 9-4747, EXT. 8091, AT LEAST 24 HOURS BEFORE STARTING ANY WORK UNDER THIS CONTRACT.
 - SPECIFICATIONS DATED OCT. 25, 1961 APPLY TO THE CONSTRUCTION OF THIS PROJECT.
 - NO CONSTRUCTION SHALL BE PERMITTED IN FILLED AREA UNLESS ACCEPTABLE CERTIFICATION IS SUBMITTED TO THE CONSTRUCTION DIVISION OF THE COUNTY ENGINEER'S DEPARTMENT THAT RELATIVE COMPACTON IS GREATER THAN 90%.
 - IF COMPACTON IS LESS THAN 90% THE SEWER MUST BE GRADED AS SHOWN ON THE PLANS PER 3-9 REG.
 - IF COMPACTON IS 90% OR GREATER CERTAINING IS NOT REQUIRED. HOWEVER, JOINT COMPACTON MUST BE SUBSTITUTED FOR JOINT GRADATION FOR ALL JOINTS IN FILLED AREAS. IF COMPACTON IS 90% OR GREATER SPECIAL M.H. SIZES ARE NOT REQUIRED.

ENGINEERING SERVICE CORPORATION					
1127 W. WASHINGTON BLVD.					
LOS ANGELES 15, CALIF.			RI. 9-7281		
REVISIONS			TRACED BY <i>J.D.</i>		
			DES'G'D BY <i>B.F., F.A.K.</i>		
			CK'D BY <i>A.M.</i>		
			SUBMITTED		
SUB STRUCTURES OK'D					
W. O. NO.	DWG. NO.	DATE	SCALE	L. B.	P. B.
6681-203		OCT 1961	AS NOTED	LOOSE	SHEETS

NOTE: GRADES TO WHICH THIS IMPROVEMENT IS TO BE CONSTRUCTED ARE SHOWN ON PLANS AND PROFILES. GRADE POINTS FOR TOP OF CURBS, CENTER LINE OF STREETS, OR CENTER LINE OF ALLEYS ARE SHOWN BY CIRCLES ON PROFILES. AT ALL POINTS BETWEEN DESIGNATED POINTS THE GRADE SHALL BE ESTABLISHED SO AS TO CONFORM TO A STRAIGHT LINE DRAWN BETWEEN SAID DESIGNATED POINTS. ELEVATIONS ARE IN FEET ABOVE U.S.C. (S.L. SEA LEVEL DATUM OF 1929). THIS DRAWING AND THE DATA HEREON ARE HEREBY MADE A PART OF THE SPECIFICATIONS. BEFORE WORK CAN BE STARTED, THE CONTRACTOR MUST OBTAIN A PERMIT TO EXCAVATE IN COUNTY STREETS FROM THE L. A. COUNTY ROAD DEPT., DISTRICT OFFICE #3 AND PAY A FEE TO THE COUNTY ENGINEER, ROOM 305, COUNTY ENGINEERS BLDG. 100 WEST 5TH STREET, SUFFICIENT TO COVER THE COST OF CONSTRUCTION INSPECTION AND RECORD PLANS. APPROVAL OF THIS PLAN BY THE COUNTY OF LOS ANGELES DOES NOT CONSTITUTE A REPRESENTATION AS TO THE ACCURACY OF THE LOCATION OR OF THE EXISTENCE OR NON-EXISTENCE OF ANY UNDERGROUND UTILITY PIPE, OR STRUCTURE WITHIN THE LIMITS OF THIS PROJECT. THIS NOTE APPLIES TO ALL PAGES. IF WORK IS TO BE DONE IN A STATE HIGHWAY, A PERMIT MUST BE OBTAINED FROM THE STATE OF CALIFORNIA, DIVISION OF HIGHWAYS, 126 SOUTH SPRING STREET.

COUNTY OF LOS ANGELES, CALIFORNIA

APPROVED, JOHN A. LAMBE, COUNTY ENGINEER

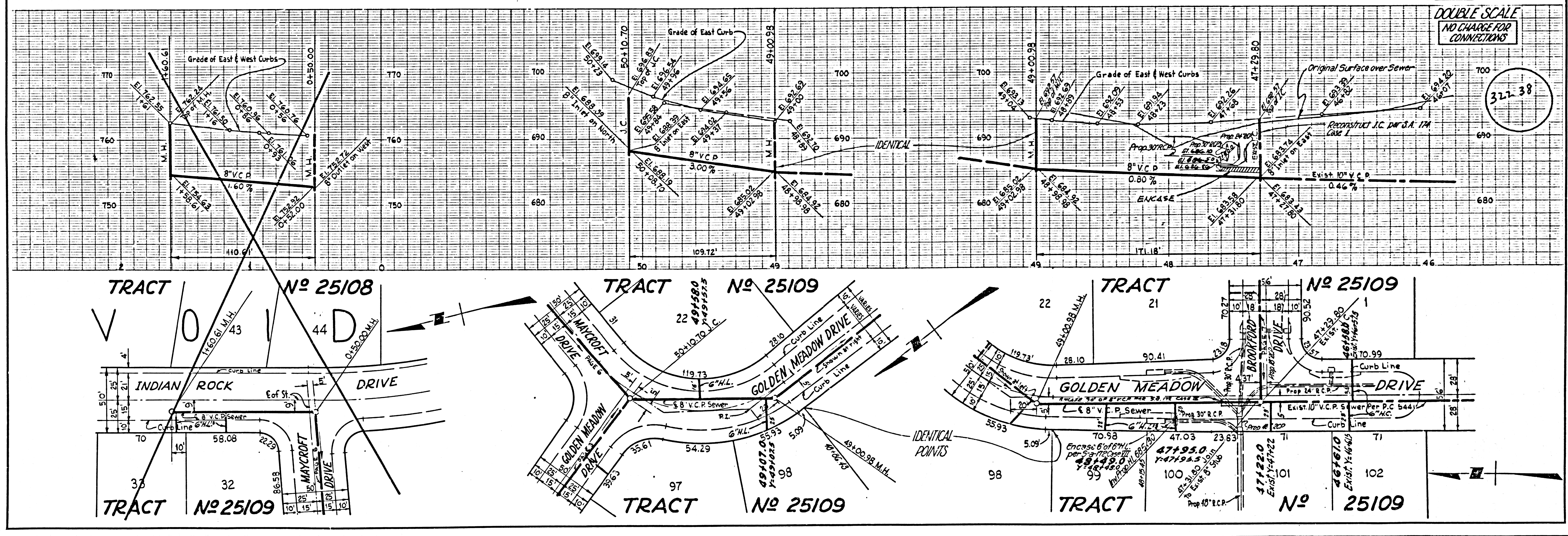
APPROVED, J.D. PARLUEST, CHIEF ENGINEER
TO SAN. DIST. NO. 12 S.P.C.

BY: *E. J. Smith* ASST. SANITATION ENGINEER

CHECKED BY: *Sik Onda* 2-16-62
OFFICE OF COUNTY ENGINEER, REG. C. E. NO. 9406

SUBMITTED BY: *Jack E. Lansing*
PALOS VERDES-CENTINELA VALLEY REGIONAL ENGINEER

P.C. 6060 PAGE 2

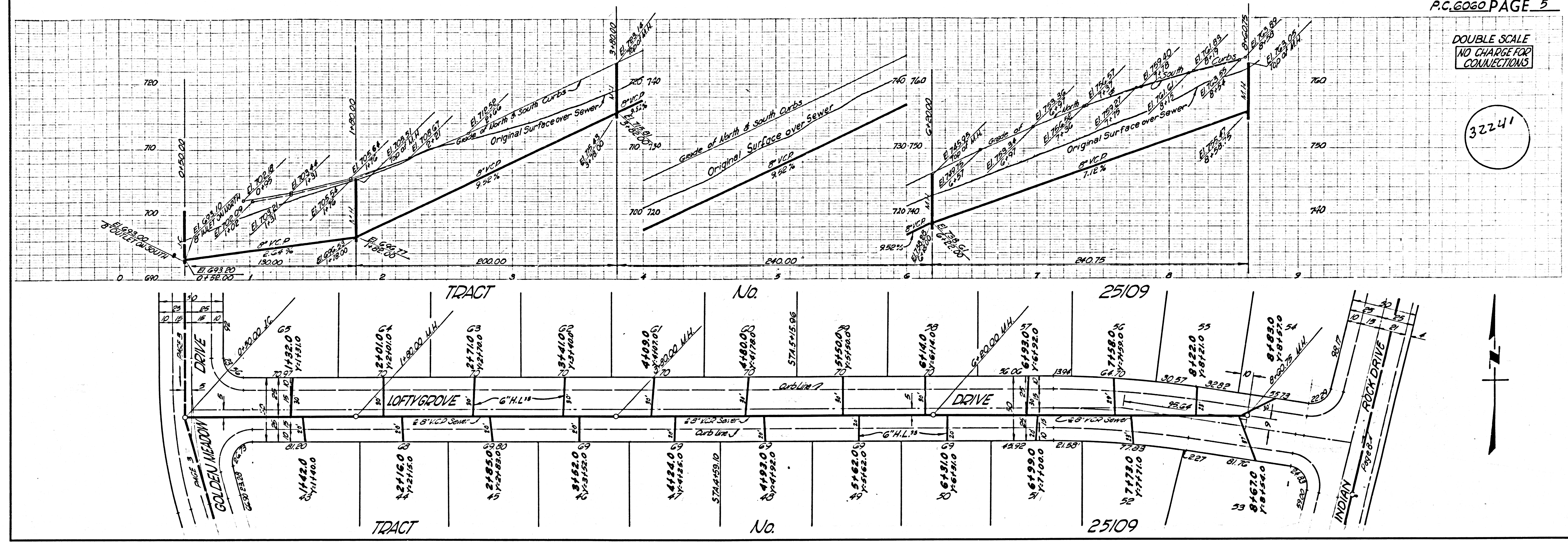


DOUBLE SCALE
NO CHARGE FOR CONNECTIONS

32238

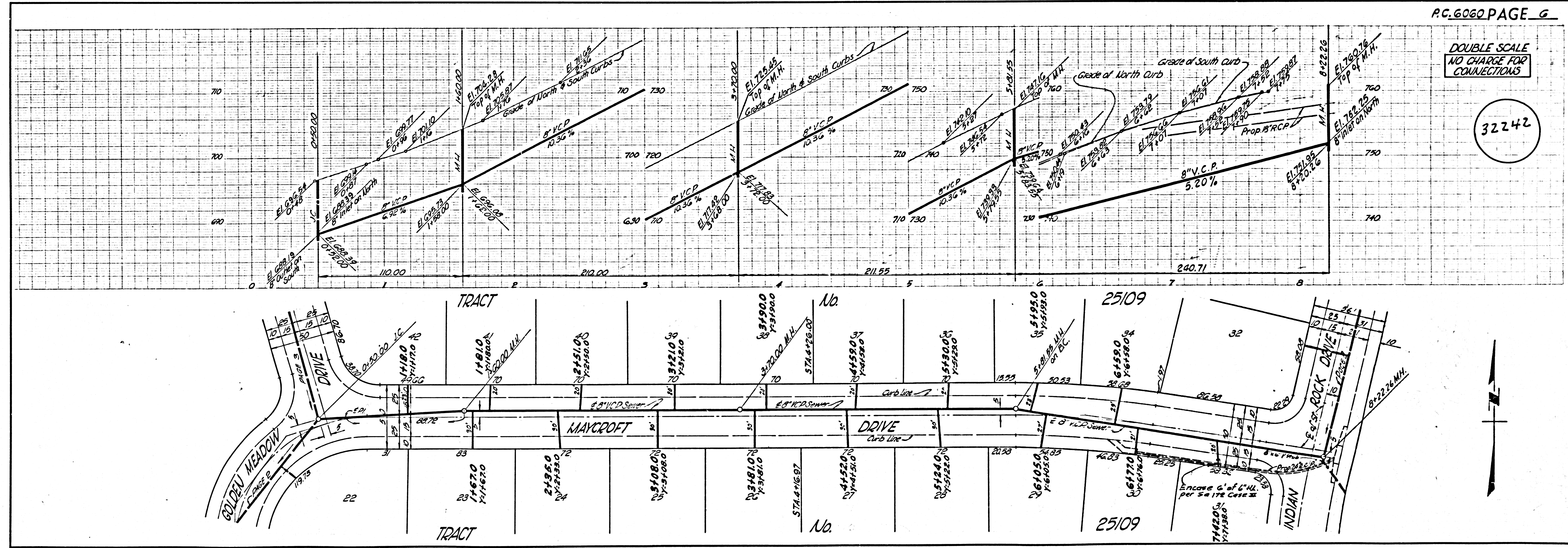
DOUBLE SCALE
NO CHARGE FOR
CONNECTIONS

32241

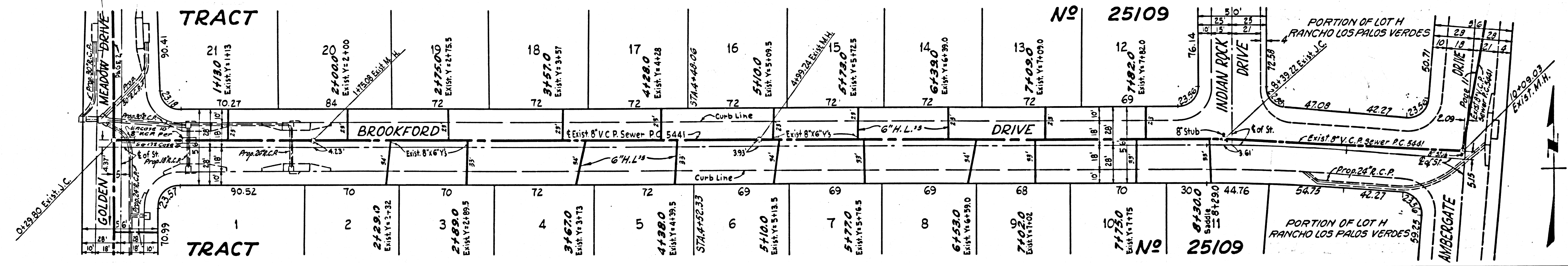
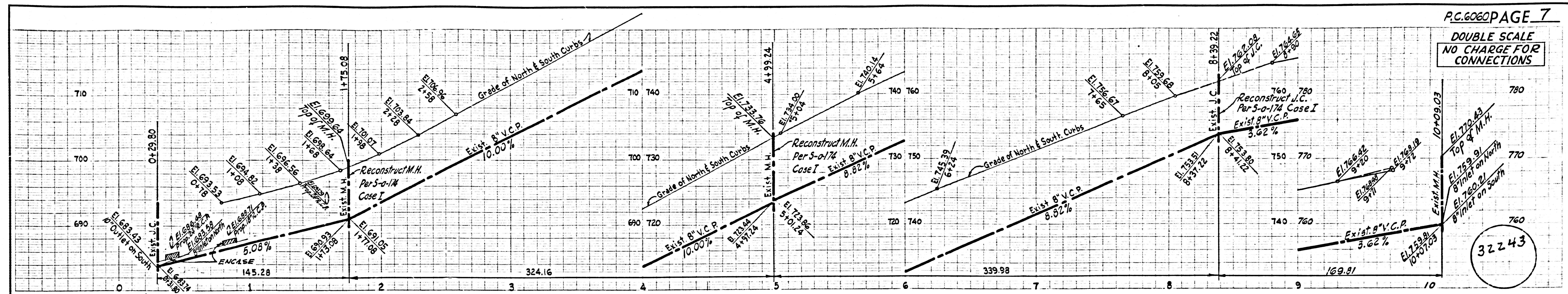


DOUBLE SCALE
NO CHARGE FOR
CONNECTIONS

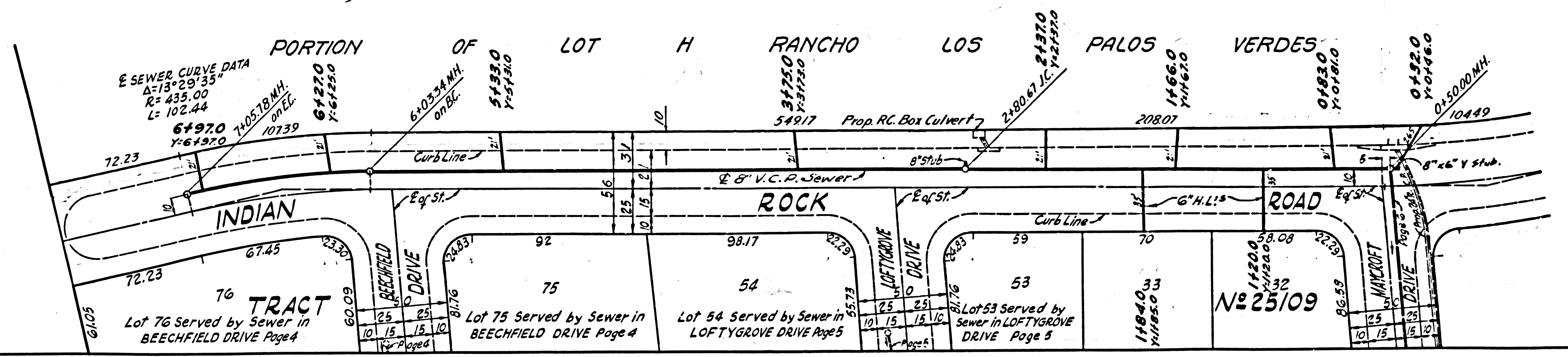
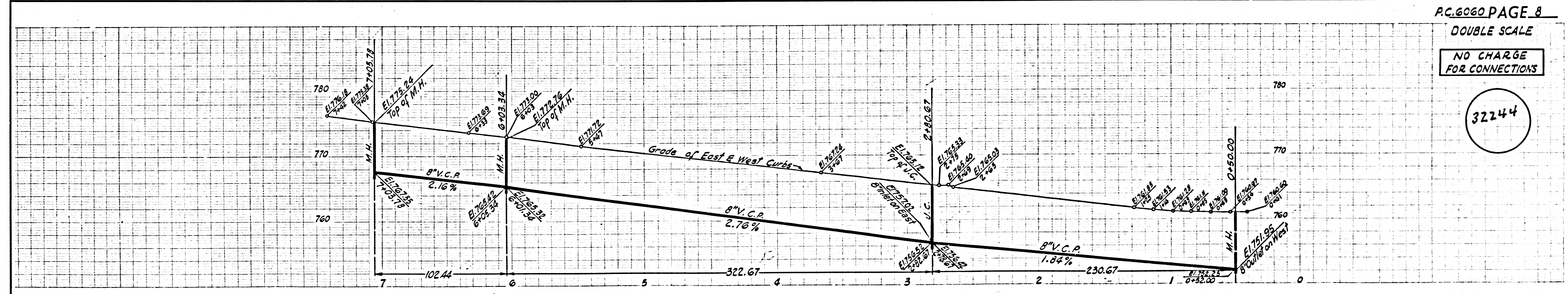
32242



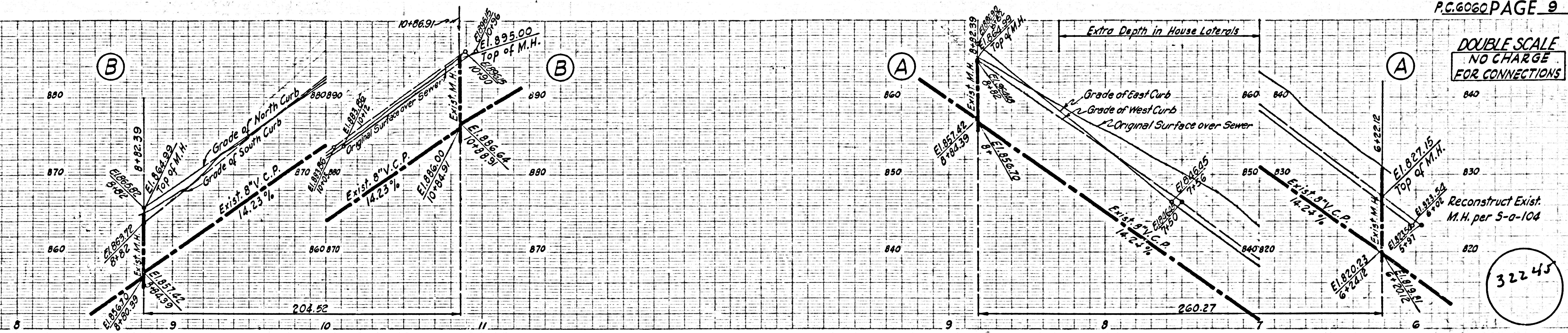
DOUBLE SCALE
NO CHARGE FOR
CONNECTIONS



DOUBLE SCALE
NO CHARGE FOR
CONNECTIONS

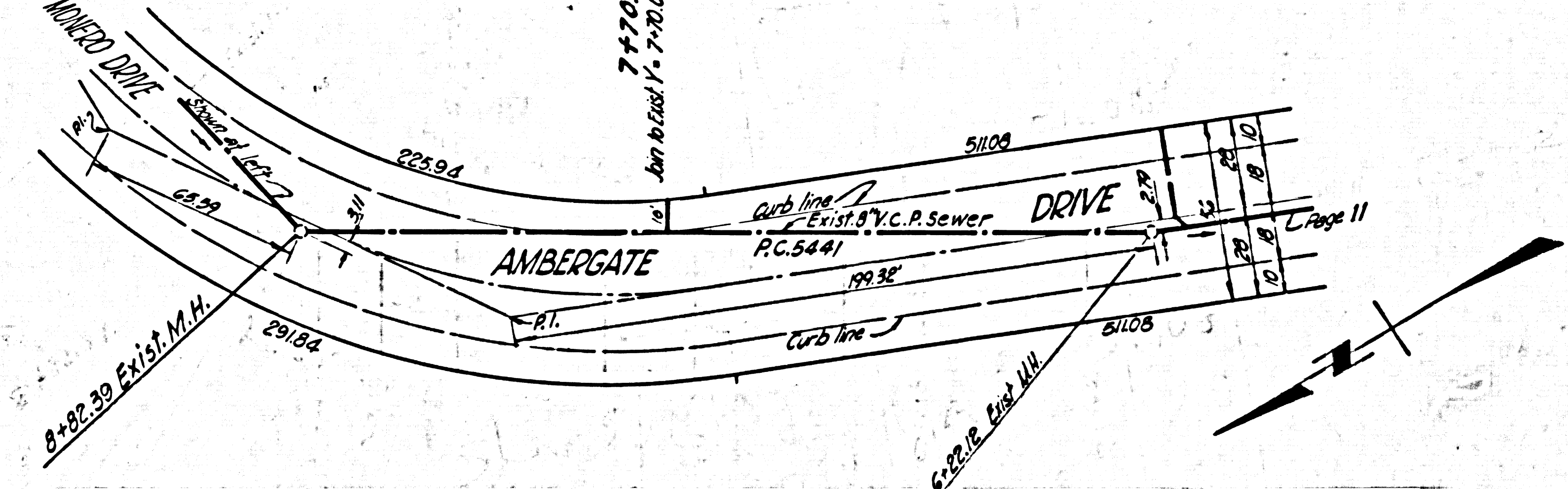
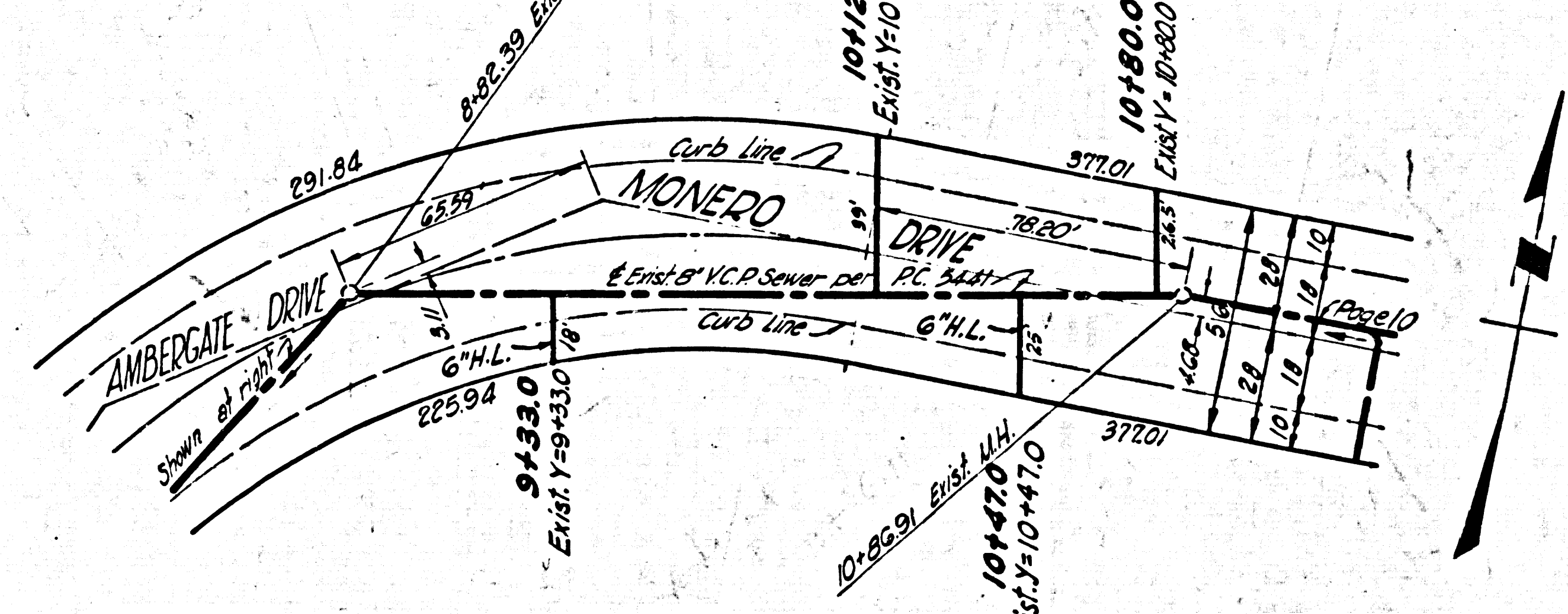


DOUBLE SCALE
NO CHARGE
FOR CONNECTIONS



PORTION OF LOT "H" RANCHO LOS PALOS VERDES

PORTION OF LOT "H" RANCHO LOS PALOS VERDES

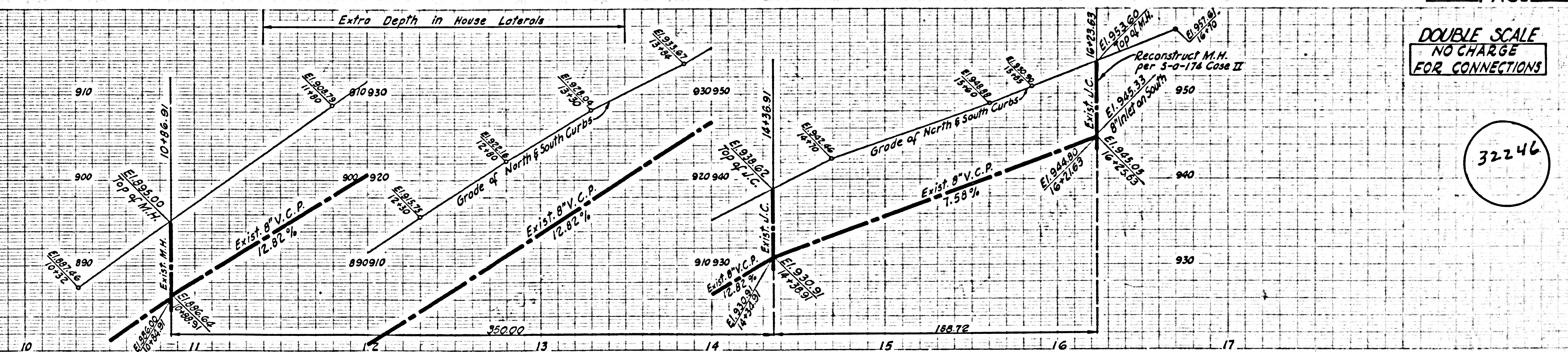


PORTION OF LOT "H" RANCHO LOS PALOS VERDES

PORTION OF LOT H RANCHO LOS PALOS VERDES

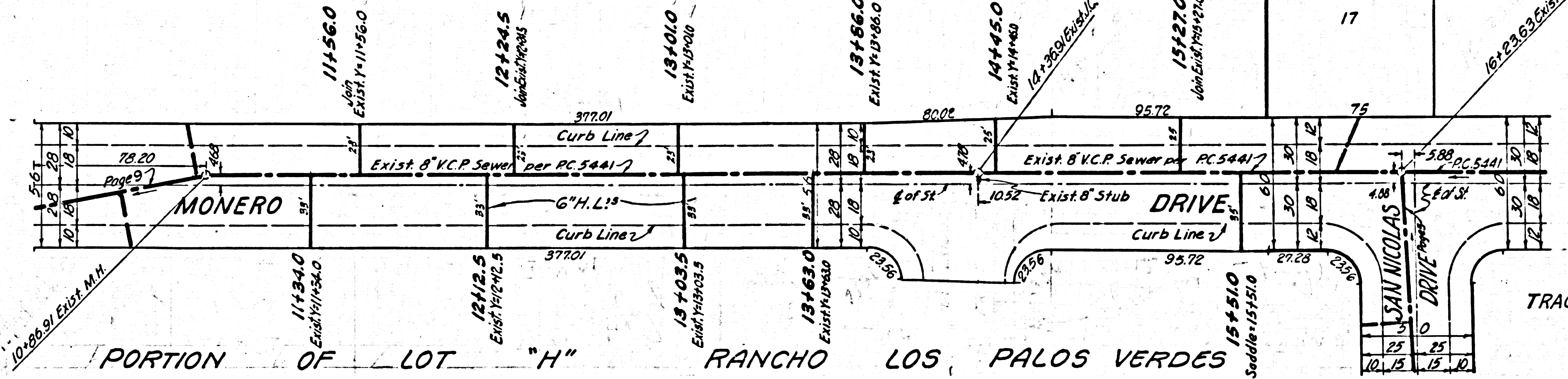
32245

DOUBLE SCALE
NO CHARGE
FOR CONNECTIONS



PORTION OF LOT "H" RANCHO LOS PALOS VERDES

TRACT NO 25107



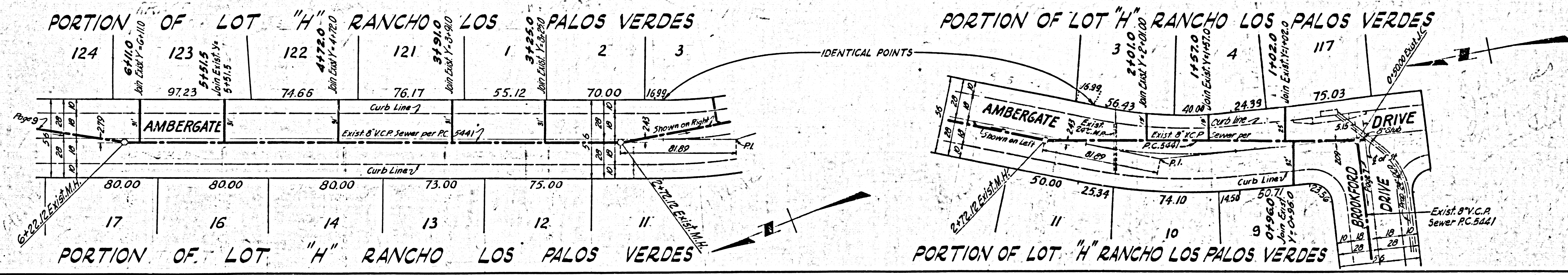
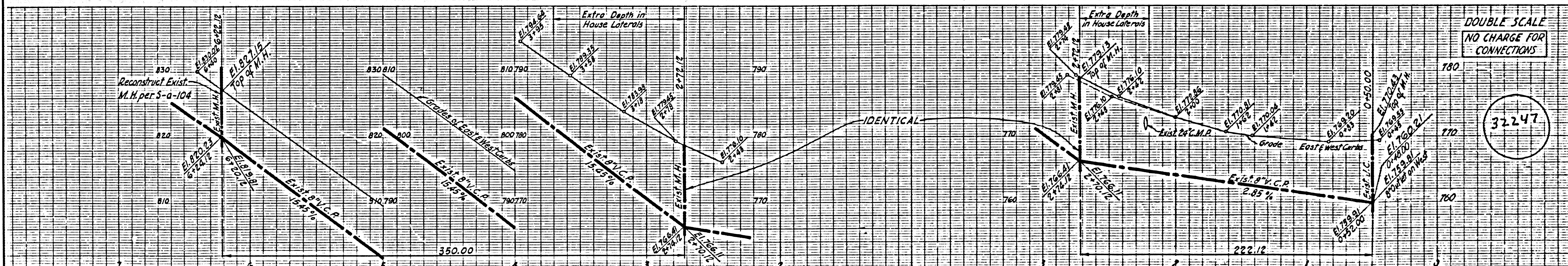
PORTION OF LOT "H" RANCHO LOS PALOS VERDES

TRACT NO 25107.

32246

DOUBLE SCALE
NO CHARGE FOR
CONNECTIONS

32247



© TRACT No S2109 P.C. 6060