

TRACT NO. 26832

PRIVATE CONTRACT NO. 6062

W.S. 46

2 SHEETS - 3 PAGES

SCALE: VERT. 1"=4' HORIZ. 1"=40'

NOVEMBER, 1961

PREPARED IN THE OFFICES OF

HILLCREST ENGINEERING CORPORATION

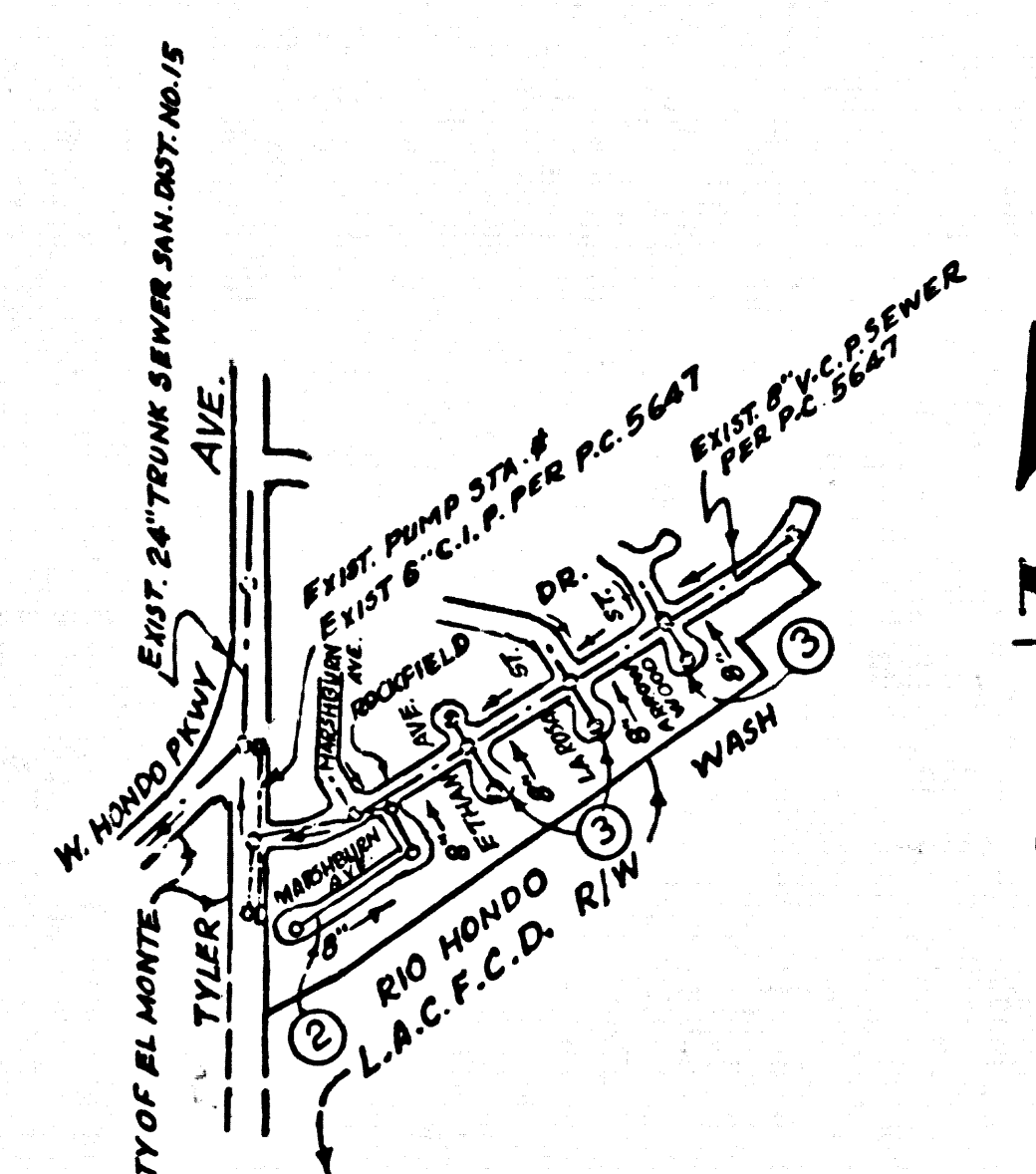
By: *David H. Foyl*

REG. C. E. NO. 1832

FOR LEGEND SEE PLAN NO. S-A-64

31656

B.M. 56 959 EL308.884
Tyler Ave.
L.S. B.M. in W. Wall of Drainage Channel at end of curb, 22' W. of Tyler Ave. 157' N. of entrance to Honda Ceramic Co. No. 5021 Tyler Ave.
Arcadia Quad. Adj. 1955



INDEX MAP
SCALE 1" = 600'
TRACT NO. 26832
P.C. 6062
⊙ INDICATES PAGE NUMBERS

NO CHARGE FOR CONNECTIONS
A. Albertson 2/2/62

ISSUE NO PERMITS UNTIL OUTLET IS AVAILABLE

REVISED:
Added Section C - C showing House Laterals from Sta 12+2.5 to Sta. 13+85.0
APPROVED *N.F. Braunder* DATE 3-5-62
SAN GABRIEL VALLEY REGIONAL ENGINEER

- NOTES:
1. PROVIDE STAKES ON THE PROPERTY LINE OR PROPERTY LINES PRODUCED AT RIGHT ANGLES TO THE SEWER LINE AT THE CENTER LINE OF EACH MANHOLE.
 2. NO REPRESENTATIVE OF THE COUNTY ENGINEER WILL SURVEY OR LAY OUT ANY PORTION OF THE WORK.
 3. THE OWNER OR HIS AUTHORIZED REPRESENTATIVE SHALL FURNISH THE COUNTY ENGINEER WITH GRADE SHEETS AND STATIONING FOR ALL HOUSE LATERALS AND Y BRANCHES AND SHALL PROVIDE STAKES FOR THEM AT THEIR PROPER LOCATIONS WITH STATIONING PLAINLY MARKED. ANY CHANGE IN LOCATION SHALL BE REQUESTED IN WRITING BY THE OWNER OR HIS REPRESENTATIVE.
 4. THE PRIVATE ENGINEER SHALL FURNISH THE HOUSE LATERAL DEPTH AT THE PROPERTY LINE BELOW THE TOP OF CURB ELEVATION FOR EACH HOUSE LATERAL ON THE GRADE SHEET.
 5. NO REVISIONS SHALL BE MADE IN THESE PLANS WITHOUT THE APPROVAL OF THE COUNTY ENGINEER.
 6. USE STANDARD MANHOLE FRAMES AND COVERS, S-117, 15" DIA. 12" DEPTH.
 7. USE EXTRA STRENGTH PIPE, ALL PIPE STANDARD DEPTH EXCEPT AS NOTED.
 8. USE CEMENT MORTAR OR "WEDGE-LOCK" OR "SPEED-SEAL" FOR ALL V.C.P. JOINTS PER SPECS. SECS. 34 & 48.
 9. RESURFACE ALL TRENCH WITHIN PAVED AREA TO MEET L.A. COUNTY ROAD DEPT. OR CALIF. STATE HIGHWAY REQUIREMENTS IN ACCORDANCE WITH PERMITS.
 10. ENCASE FOUR FEET OF SEWER AT POINTS OF INTERFERENCE WITH POLES, CASE III, S-172.
 11. HOUSE LATERALS TO BE CONSTRUCTED WITH INVERTS AT PROPERTY LINE... 8" FEET BELOW CURB GRADE.
 12. MANHOLES SHALL BE BACK SEWER STRUCTURES PER S-8-104. PRECAST CONCRETE MANHOLES PER S-8-105 OR S-8-107 MAY BE USED AS AN ALTERNATE IN LOCATIONS APPROVED BY THE COUNTY ENGINEER.
 13. FOR ALLOWABLE LEAKAGE TEST USE FORMULA NO. 1, SPECS. SEC. 54.
 14. MANHOLE TOPS IN UNIMPROVED RIGHTS-OF-WAY TO BE SIX INCHES ABOVE FINISHED GRADE.
 15. THE CONTRACTOR SHALL NOTIFY THE CONSTRUCTION DIVISION BY TELEPHONE, MADISON 3-4749, EXT. 8150 AT LEAST TWENTY-FOUR HOURS BEFORE STARTING ANY WORK UNDER THIS CONTRACT.
 16. STANDARD SPECIFICATIONS DATED OCT. 25, 1961, SHALL BE USED IN THE CONSTRUCTION OF THIS PROJECT.
 17. ALL HOUSE LATERALS OR MAIN LINE SEWERS CROSSING STORM DRAINS NOT OTHERWISE ENCASED, SHALL BE ENCASED PER S-2-172, CASE III.
 18. NO CONSTRUCTION SHALL BE PERMITTED IN FILLED AREA UNLESS ACCEPTABLE CERTIFICATION IS SUBMITTED TO THE CONSTRUCTION DIVISION OF THE COUNTY ENGINEERS DEPARTMENT THAT RELATIVE COMPACTION IS GREATER THAN 80%.
 19. IF COMPACTION IS LESS THAN 90% THE SEWER MUST BE CRADLED AS SHOWN ON THE PLANS PER S-2-166, AND MANHOLE BASES SHALL BE CONSTRUCTED PER S-2-153.
 20. IF COMPACTION IS GREATER THAN 90% CRADLING AND SPECIAL M.H. BASE ARE NOT REQUIRED, HOWEVER JOINT COMPOUND MUST BE SUBSTITUTED FOR CEMENT MORTAR IN ALL JOINTS IN FILLED AREAS.

NO WELL WITHIN 200' OF SEWER

NO CONNECTIONS FOR THE DISPOSAL OF INDUSTRIAL WASTES SHALL BE MADE TO SEWERS SHOWN ON THESE DRAWINGS WITHOUT WRITTEN PERMISSION FROM THE CHIEF ENGINEER AND GENERAL MANAGER OF THE COUNTY SANITATION DISTRICTS.

NOTE:
GRADES TO WHICH THIS IMPROVEMENT IS TO BE CONSTRUCTED ARE SHOWN ON PLANS AND PROFILES GRADE POINTS FOR TOP OF CURBS, CENTER LINE OF STREETS, OR CENTER LINE OF ALLEYS ARE SHOWN BY CIRCLES ON PROFILES. ALL POINTS BETWEEN DESIGNATED POINTS THE GRADE SHALL BE ESTABLISHED SO AS TO CONFORM TO A STRAIGHT LINE DRAWN BETWEEN SAID DESIGNATED POINTS.
ELEVATIONS ARE IN FEET ABOVE U.S.C. & G.S. SEA LEVEL DATUM OF 1929.
THIS DRAWING AND THE DATA HEREON ARE HEREBY MADE A PART OF THE SPECIFICATIONS.
WORK SHALL BE CONSTRUCTED ACCORDING TO SPECIFICATIONS ON FILE IN THE OFFICE OF THE COUNTY ENGINEER AND SHALL BE PROSECUTED ONLY IN THE PRESENCE OF THE COUNTY ENGINEER.
BEFORE WORK CAN BE STARTED, THE CONTRACTOR MUST OBTAIN A PERMIT TO EXCAVATE IN COUNTY STREETS FROM THE L.A. COUNTY ROAD DEPT., DISTRICT OFFICE NO. 12, AND PAY A FEE TO THE COUNTY ENGINEER ROOM 310 COUNTY ENGINEER BUILDING, FOR HIS STAMP AND SIGNATURE, SUFFICIENT TO COVER THE COST OF CONSTRUCTION INSPECTION AND RECORD PLANS.
APPROVAL OF THIS PLAN BY THE COUNTY OF LOS ANGELES DOES NOT CONSTITUTE A REPRESENTATION AS TO THE ACCURACY OF THE LOCATION OF OR THE EXISTENCE OR NON-EXISTENCE OF ANY UNDERGROUND UTILITY PIPE, OR STRUCTURE WITHIN THE LIMITS OF THIS PROJECT. THIS NOTE APPLIES TO ALL PAGES.
IF WORK IS TO BE DONE IN A STATE HIGHWAY, A PERMIT MUST BE OBTAINED FROM THE STATE OF CALIFORNIA, DIVISION OF HIGHWAYS, 126 SOUTH SPRING STREET.

COUNTY OF LOS ANGELES, CALIFORNIA

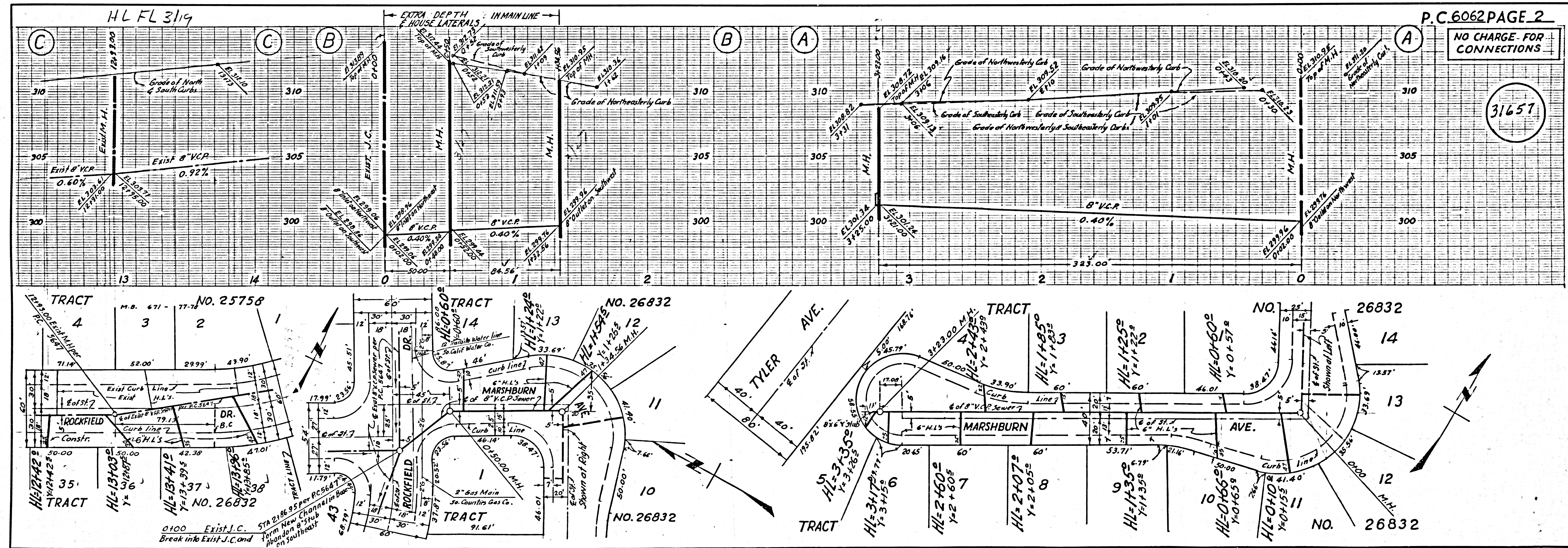
APPROVED, JOHN A. LAMBIE, COUNTY ENGINEER APPROVED, JOHN D. MURKIN, CHIEF ENGINEER
CO. SAN. DIST. NO. 15

BY: *David H. Foyl* ASSISTANT - SANITATION ENGINEER BY: *J. D. Murkin* OFFICE ENGINEER

CHECKED BY: *St. Under* OFFICE OF COUNTY ENGINEER, REG. C. E. NO. 3462

SUBMITTED: *N.F. Braunder* SAN GABRIEL VALLEY REGIONAL ENGINEER

HL & HL Flooded 3/22 No MH Rpt. All Flooded 3/26 No MH reported 3/16



31657

NO CHARGE FOR CONNECTIONS

31658

31658 TRACT 5885

