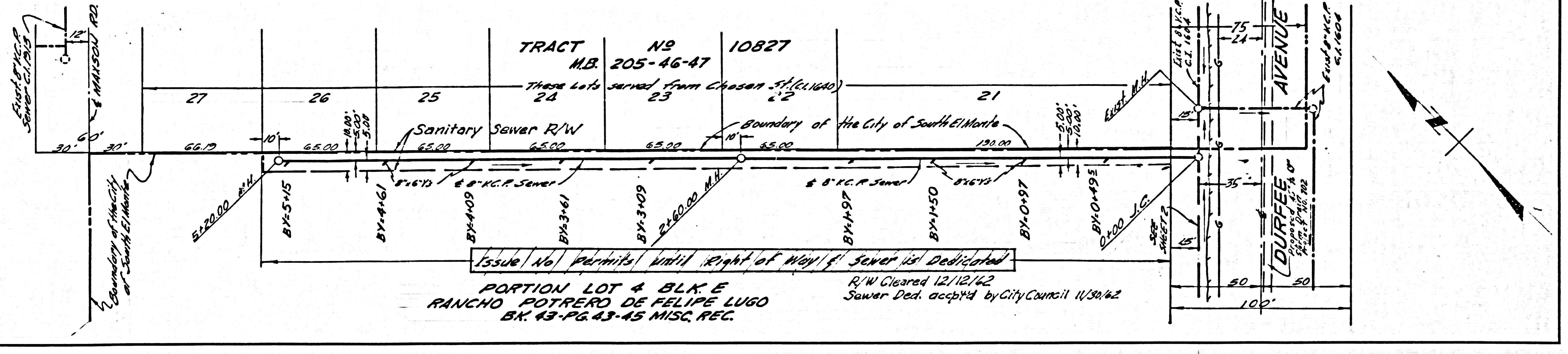
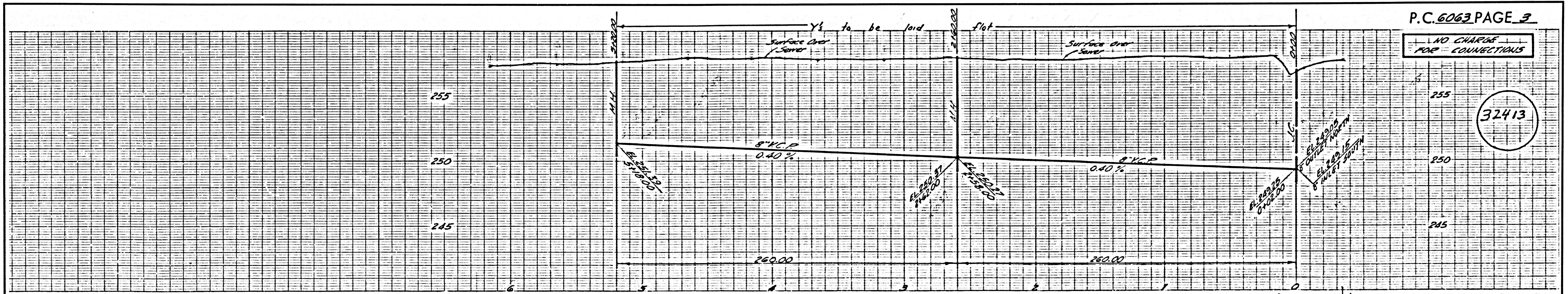


NO CHARGE FOR CONNECTIONS

32413



TRACT NO 10827
 M.B. 205-46-47
 These lots saved from Chason St. (11/10/40)
 24 25

Sanitary Sewer R/W
 Boundary of the City of South El Monte

Issue No permits until Right of Way if Sewer is Dedicated
 PORTION LOT 4 BLK E
 RANCHO POTRERO DE FELIPE LUGO
 BK 43-PG 43-45 MISC REC.
 R/W Cleared 12/12/42
 Sewer Ded. accepted by City Council 11/30/42

