

PRIVATE CONTRACT NO. 6064

W.S. 48
2 SHEETS; 3 PAGES
SCALE: VERT. 1"=4'
HORIZ. 1"=40'
DECEMBER, 1961
PREPARED IN THE OFFICES OF
TECHNOLOGICAL ENGINEERING CORP.
By: J.A. Patterson
REG. C. E. NO. 10410

31877

FOR LEGEND SEE PLAN NO. S-A-64

NOTE:
GRADES TO WHICH THIS IMPROVEMENT IS TO BE CONSTRUCTED ARE SHOWN ON PLANS AND PROFILE. GRADE POINTS FOR TOP OF CURBS, CENTER LINE OF STREETS, OR CENTER LINE OF ALLEYS ARE SHOWN BY CIRCLES ON PROFILES. AT ALL POINTS BETWEEN DESIGNATED POINTS THE GRADE SHALL BE ESTABLISHED SO AS TO CONFORM TO A STRAIGHT LINE DRAWN BETWEEN SAID DESIGNATED POINTS.
ELEVATIONS ARE IN FEET ABOVE U.S.C. & G.S. SEA LEVEL DATUM OF 1929.
THIS DRAWING AND THE DATA HEREON ARE HEREBY MADE A PART OF THE SPECIFICATIONS.
WORK SHALL BE CONSTRUCTED ACCORDING TO SPECIFICATIONS ON FILE IN THE OFFICE OF THE COUNTY ENGINEER AND SHALL BE PROSECUTED ONLY IN THE PRESENCE OF THE COUNTY ENGINEER.
WHEN WORK CAN BE STARTED, THE CONTRACTOR MUST OBTAIN A PERMIT TO EXCAVATE IN COUNTY STREETS FROM THE L.A. COUNTY ROAD DEPT., DISTRICT OFFICE NO. 10, AND PAY A FEE TO THE COUNTY ENGINEER, ROOM 310, COUNTY ENGINEER'S OFFICE, 100 N. ST. L.A., SUFFICIENT TO COVER THE COST OF CONSTRUCTION INSPECTION AND RECORD PLANS. ALL CONSTRUCTION INSPECTION TO BE DONE BY THE COUNTY ENGINEER.
APPROVAL OF THIS PLAN BY THE COUNTY OF LOS ANGELES DOES NOT CONSTITUTE A REPRESENTATION AS TO THE ACCURACY OF THE LOCATION OF OR THE EXISTENCE OR NON-EXISTENCE OF ANY UNDERGROUND UTILITY PIPE, OR STRUCTURE WITHIN THE LIMITS OF THIS PROJECT. THIS NOTE APPLIES TO ALL PAGES.
IF WORK IS TO BE DONE IN A STATE HIGHWAY, A PERMIT MUST BE OBTAINED FROM THE STATE OF CALIFORNIA, DIVISION OF HIGHWAYS, 126 SOUTH SPRING STREET.

COUNTY OF LOS ANGELES, CALIFORNIA

APPROVED, JOHN A. LAMBIE, COUNTY ENGINEER APPROVED, J.D. PARKHURST, CHIEF ENGINEER

CO. SAN. DIST. NO. 22

By: Richard E. Kuhn ASST. SANITATION ENGINEER BY: C.P. Bennett CHIEF OFFICE ENGINEER

CHECKED BY: J.K. Wadsworth 9-5-61

OFFICE OF COUNTY ENGINEER, REG. C. E. NO. 3406

SUBMITTED BY: W.C. Boudette
SAN DIMAS REGIONAL ENGINEER

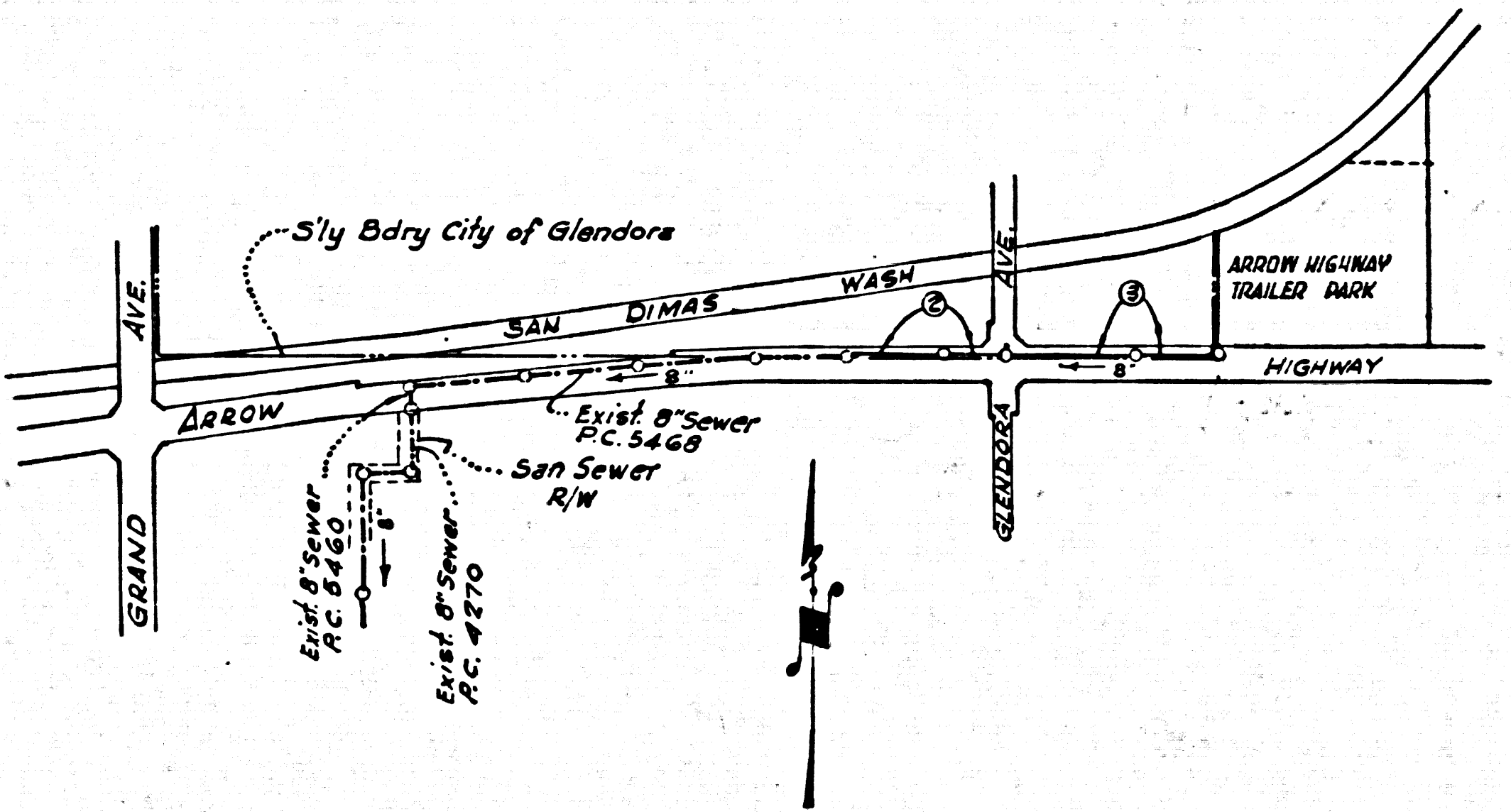
BENCH MARK: 66.251 A
LEFT IN CONC. WALK TO HOUSE WITH CONC. BLOCK FENCE 5' 68" NORTH OF ARROW HIGHWAY 250' WEST OF GLENDORA AVE. MARKED S.M. SAN DIMAS BLDG. 1960 ADD. EL. 679.962

- 1. PROVIDE STAKES ON THE PROPERTY LINE OR PROPERTY LINES PRODUCED AT RIGHT ANGLES TO THE SEWER LINE AT THE CENTER LINE OF EACH MANHOLE.
- 2. NO REPRESENTATIVE OF THE COUNTY ENGINEER WILL SURVEY OR LAY OUT ANY PORTION OF THE WORK.
- 3. THE OWNER OR HIS AUTHORIZED REPRESENTATIVE SHALL FURNISH THE COUNTY ENGINEER WITH GRADE SHEETS AND STATIONING FOR ALL HOUSE LATERALS AND Y BRANCHES AND SHALL PROVIDE STAKES FOR THEM AT THEIR PROPER LOCATIONS WITH STATIONING PLAINLY MARKED. ANY CHANGE IN LOCATION SHALL BE REQUESTED IN WRITING BY THE OWNER OR HIS REPRESENTATIVE.
- 4. THE PRIVATE ENGINEER SHALL FURNISH THE HOUSE LATERAL DEPTH AT THE PROPERTY LINE BELOW THE TOP OF CURB ELEVATION FOR EACH HOUSE LATERAL ON THE GRADE SHEET.
- 5. NO REVISIONS SHALL BE MADE IN THESE PLANS WITHOUT THE APPROVAL OF THE COUNTY ENGINEER.
- 6. USE STANDARD MANHOLE FRAMES AND COVERS, S-111.
- 7. USE EXTRA STRENGTH PIPE - ALL PIPE STANDARD DEPTH, EXCEPT AS NOTED.
- 8. USE "WEDGE-LOCK" OR "SPEED-SEAL" FOR ALL V.C.P. JOINTS PER SPECS. 34 & 48.
- 9. RESURFACE ALL TRENCH WITHIN PAVED AREA TO MEET L.A. COUNTY ROAD DEPT. OR CALIF. STATE HIGHWAY REQUIREMENTS IN ACCORDANCE WITH PERMITS.
- 10. ENSURE FOUR FEET OF SEWER AT POINTS OF INTERFERENCE WITH POLES, CASE NO. S-117.
- 11. HOUSE LATERALS TO BE CONSTRUCTED WITH INVERTS AT PROPERTY LINE 6 FEET BELOW CURB GRADE.
- 12. MANHOLES SHALL BE BRICK SEWER STRUCTURES PER S-104. PRECAST CONCRETE MANHOLES PER S-104-135, OR S-104-173 MAY BE USED AS AN ALTERNATE IN LOCATIONS APPROVED BY THE COUNTY ENGINEER.
- 13. FOR ALLOWABLE LEAKAGE TEST USE FORMULA NO. 1 SPECS. SEC. 54.
- 14. MANHOLE TOPS IN UNIMPROVED RIGHTS-OF-WAY TO BE SIX INCHES ABOVE FINISHED GRADE.
- 15. THE CONTRACTOR SHALL NOTIFY THE CONSTRUCTION & PERMITS DIVISION BY TELEPHONE, MADISON 9-4741, EXT 8251 AT LEAST TWENTY-FOUR HOURS BEFORE STARTING ANY WORK UNDER THIS CONTRACT.
- 16. STANDARD SPECIFICATIONS DATED OCT. 25, 1961 APPLY IN THE CONSTRUCTION OF THIS PROJECT.
- 17. WHERE SEWER PASSES UNDER EXISTING CONCRETE, THE CONCRETE SHALL BE SAW CUT TO A STRAIGHT EDGE ONE FOOT WIDER THAN TRENCH AND SHALL BE REPLACED WITH CLASS A 6" BACK CONCRETE ONE INCH GREATER THAN EXISTING.
- 18. TRENCH BACKFILLING BELOW A PLANE ONE FOOT BELOW FINISHED GROUND SURFACE SHALL BE COMPACTED TO NOT LESS THAN 90% OF MAXIMUM DENSITY, BACKFILL ABOVE SAID PLANE SHALL BE COMPACTED TO NOT LESS THAN 95% MAXIMUM DENSITY. THE CONTRACTOR SHALL FURNISH THE CITY ENGINEER A CERTIFICATION OF CONSTRUCTION FROM A QUALIFIED TESTING LABORATORY AT NO COST TO THE CITY.
- 19. THE CONTRACTOR SHALL OBTAIN A PERMIT TO EXCAVATE IN CITY STREETS PRIOR TO START OF CONSTRUCTION.

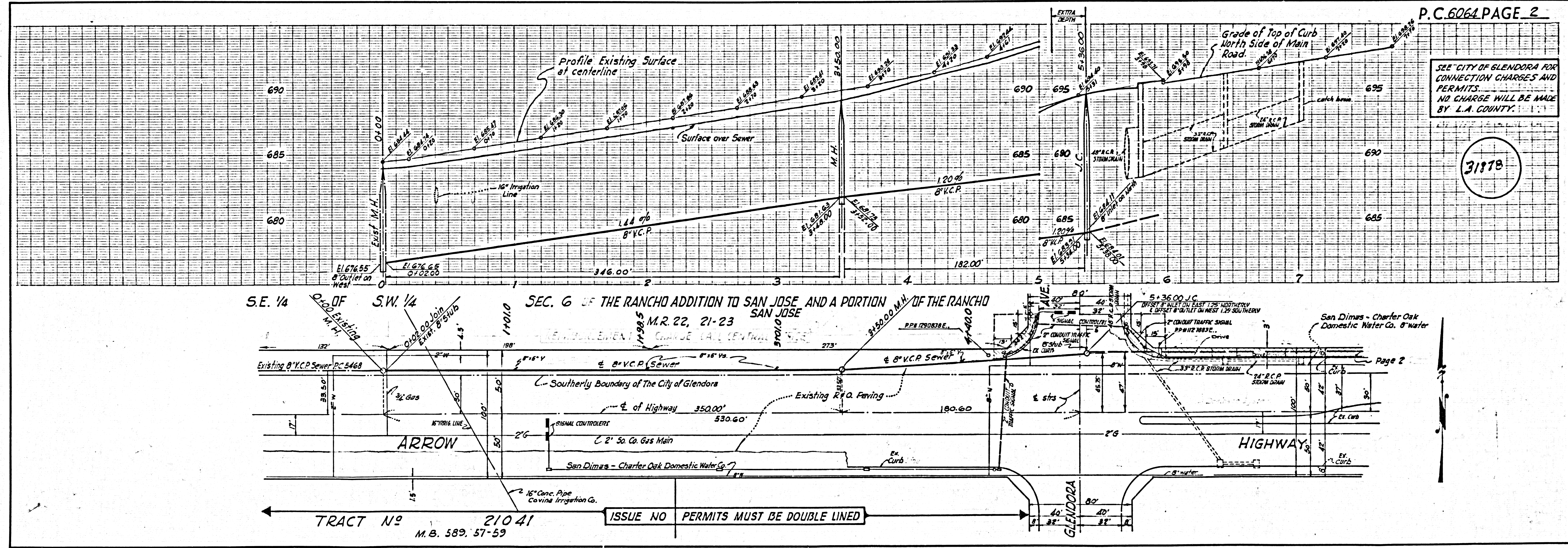
NO CONNECTIONS FOR THE DISPOSAL OF INDUSTRIAL WASTES SHALL BE MADE TO SEWERS SHOWN ON THESE DRAWINGS WITHOUT WRITTEN PERMISSION FROM THE CHIEF ENGINEER AND GENERAL MANAGER OF THE COUNTY SANITATION DISTRICTS.

CITY OF GLENDORA
Approved By: [Signature] City Engineer

COLLECT. CHARGES AS INDICATED
M.C. Dennis 4-4-62



INDEX MAP
SCALE: 1"=600'
P.C. NO. 6064



SEE CITY OF GLENDORA FOR CONNECTION CHARGES AND PERMITS. NO CHARGE WILL BE MADE BY L.A. COUNTY.

31978

SEC. 6 OF THE RANCHO ADDITION TO SAN JOSE AND A PORTION OF THE RANCHO SAN JOSE
M.R. 22, 21-23
SOUHERLY BOUNDARY OF THE CITY OF GLENDORA
ARROW
HIGHWAY
TRACTION NO. 21041
M.B. 589, 57-59
ISSUE NO PERMITS MUST BE DOUBLE LINED

J.N. 845

