

**MONTROSE BLDG. DIST. NO. 3-1**

- NOTES:**
1. PROVIDE STAKES ON THE PROPERTY LINE OR PROPERTY LINES PRODUCED AT RIGHT ANGLES TO THE SEWER LINE AT THE CENTER LINE OF EACH MANHOLE.
  2. NO REPRESENTATIVE OF THE COUNTY ENGINEER WILL SURVEY OR LAY OUT ANY PORTION OF THE WORK.
  3. THE OWNER OR HIS AUTHORIZED REPRESENTATIVE SHALL FURNISH THE COUNTY ENGINEER WITH GRADE SHEETS AND STATIONING FOR ALL HOUSE LATERALS AND Y BRANCHES AND SHALL PROVIDE STAKES FOR THEM AT THEIR PROPER LOCATIONS WITH STATIONING PLAINLY MARKED. ANY CHANGE IN LOCATION SHALL BE REQUESTED IN WRITING BY THE OWNER OR HIS REPRESENTATIVE.
  4. THE PRIVATE ENGINEER SHALL FURNISH THE HOUSE LATERAL DEPTH AT THE PROPERTY LINE BELOW THE TOP OF CURB ELEVATION FOR EACH HOUSE LATERAL ON THE GRADE SHEET.
  5. NO REVISIONS SHALL BE MADE IN THESE PLANS WITHOUT THE APPROVAL OF THE COUNTY ENGINEER.
  6. USE STANDARD MANHOLE FRAMES AND COVERS, 3-117, EXCEPT AS NOTED.
  7. USE EXTRA STRENGTH PIPE. ALL PIPE SHALL BE STANDARD DEPTH EXCEPT AS NOTED.
  8. USE CEMENT MORTAR OR "WEDGE-LOCK" OR "SPED-SEAL" FOR ALL J.C.P. JOINTS PER SPECS. SECS. 34 & 48.
  9. RESURFACE ALL TRENCH WITHIN PAVED AREA TO MEET L.A. COUNTY ROAD DEPT. OR CALIF. STATE HIGHWAY REQUIREMENTS IN ACCORDANCE WITH PERMITS.
  10. ENCASE FOUR FEET OF SEWER AT POINTS OF INTERFERENCE WITH POLES, CASE III, 5-172.
  11. HOUSE LATERALS TO BE CONSTRUCTED WITH INVERTS AT PROPERTY LINE 6 FEET BELOW CURB GRADE EXCEPT AS NOTED.
  12. MANHOLES SHALL BE BRICK SEWER STRUCTURES PER 3-2-106. PRECAST CONCRETE MANHOLES PER 3-2-135 OR 3-2-173 MAY BE USED AS AN ALTERNATE IN LOCATIONS APPROVED BY THE COUNTY ENGINEER.
  13. FOR ALLOWABLE LEAKAGE TEST USE FORMULA NO. 1, SPECS. SEC. 54.
  14. MANHOLE TOPS IN UNIMPROVED RIGHTS-OF-WAY TO BE SIX INCHES ABOVE FINISHED GRADE.
  15. THE CONTRACTOR SHALL NOTIFY THE CONSTRUCTION DIVISION BY TELEPHONE, MADISON 3-4749, EXT. 81821, AT LEAST TWENTY-FOUR HOURS BEFORE STARTING ANY WORK UNDER THIS CONTRACT.
  16. STANDARD SPECIFICATIONS DATED OCT. 25, 1961 APPLY IN THE CONSTRUCTION OF THIS PROJECT.
  17. ALL HOUSE LATERALS OR MAIN LINE SEWERS CROSSING STORM DRAINS NOT OTHERWISE ENCASED, SHALL BE ENCASED PER 5-2-173, CASE III.
  18. NO CONSTRUCTION SHALL BE PERMITTED IN FILLED AREA UNLESS ACCEPTABLE CERTIFICATION IS SUBMITTED TO THE CONSTRUCTION DIVISION OF THE COUNTY ENGINEERS DEPARTMENT THAT RELATIVE COMPACTION IS GREATER THAN 80%.
    - a. IF COMPACTION IS LESS THAN 90% THE SEWER MUST BE CRADELED AS SHOWN ON THE PLANS PER 3-2-184, AND MANHOLE BASES SHALL BE CONSTRUCTED PER 3-2-173.
    - b. IF COMPACTION IS GREATER THAN 90% CRADLEING AND SPECIAL M.H. BASE ARE NOT REQUIRED, HOWEVER "WEDGE-LOCK" MUST BE SUBSTITUTED FOR CEMENT MORTAR IN ALL JOINTS IN FILLED AREAS.
  19. WORDS IN CIRCLES AT ENDS OF HOUSE LATERALS INDICATE 1/4" SHALL BE LAID HORIZONTAL AND HOUSE LATERALS SHALL BE CONSTRUCTED WITH 1/4" RISE PER FOOT TO PROPERTY LINE.

**KEY MAP**  
TRACT No 24134  
Scale: 1" = 400'  
P.C. 6067

NO CONNECTIONS SHALL BE MADE TO THE SEWERS SHOWN HEREON UNTIL SEWAGE TREATMENT PLANT HAS BEEN CONSTRUCTED BY ANGELES CREST DEVELOPMENT COMPANY AND CERTIFIED TO BE READY FOR USE BY CHIEF ENGINEER OF COUNTY SANITATION DISTRICT NO. 28

NO CONNECTIONS FOR THE DISPOSAL OF INDUSTRIAL WASTES SHALL BE MADE TO SEWERS SHOWN ON THESE DRAWINGS WITHOUT WRITTEN PERMISSION FROM THE CHIEF ENGINEER AND GENERAL MANAGER OF THE COUNTY SANITATION DISTRICTS.

PROFILE ALIGNMENT AND GRADE OF **P.C. 6067**  
**SANITARY SEWERS PAGE 1**  
TO BE CONSTRUCTED IN **JN 0357.12**

**TRACT NO. 24134**  
M. B. 678, 76 -90  
**PRIVATE CONTRACT NO. 6067**

W.S. 88  
7 SHEETS; 19 PAGES  
SCALE: VERT. 1" = 8'  
HORIZ. 1" = 40'  
NOVEMBER, 1961  
PREPARED IN THE OFFICES OF  
ENGINEERING DIVISION  
1924 S. GILBERT ST. LOS ANGELES, CALIF.  
By: *Ernest S. Skand*  
REG. C. E. NO. 2533

32901

FOR LEGEND SEE PLAN NO. S-A-64

**NOTE:**  
GRADES TO WHICH THIS IMPROVEMENT IS TO BE CONSTRUCTED ARE SHOWN ON PLANS AND PROFILES. GRADE POINTS FOR TOP OF CURBS, CENTER LINE OF STREETS OR CENTER LINE OF ALLEYS ARE SHOWN BY CIRCLES ON PROFILES. AT ALL POINTS BETWEEN DESIGNATED POINTS THE GRADE SHALL BE ESTABLISHED SO AS TO CONFORM TO A STRAIGHT LINE DRAWN BETWEEN SAID DESIGNATED POINTS.  
ELEVATIONS ARE IN FEET ABOVE U.S.C. & G.S. SEA LEVEL DATUM OF 1929.  
THIS DRAWING AND THE DATA HEREON ARE HEREBY MADE A PART OF THE SPECIFICATIONS.  
WORK SHALL BE CONSTRUCTED ACCORDING TO SPECIFICATIONS ON FILE IN THE OFFICE OF THE COUNTY ENGINEER AND SHALL BE PROSECUTED ONLY IN THE PRESENCE OF THE COUNTY ENGINEER.  
BEFORE WORK CAN BE STARTED THE CONTRACTOR MUST OBTAIN A PERMIT TO EXCAVATE IN COUNTY STREETS FROM THE L.A. COUNTY ROAD DEPT. DISTRICT OFFICE NO. 2 AND PAY A FEE TO THE COUNTY ENGINEER 2000.00.  
L.A. C.E. ENG. 8126, 408 N. 54th ST. LOS ANGELES 12, SUFFICIENT TO COVER THE COST OF CONSTRUCTION INSPECTION AND RECORD PLANS.  
APPROVAL OF THIS PLAN BY THE COUNTY OF LOS ANGELES DOES NOT CONSTITUTE A REPRESENTATION AS TO THE ACCURACY OF THE LOCATION OF OR THE EXISTENCE OR NON-EXISTENCE OF ANY UNDERGROUND UTILITY PIPE, OR STRUCTURE WITHIN THE LIMITS OF THIS PROJECT. THIS NOTE APPLIES TO ALL PAGES.  
IF WORK IS TO BE DONE IN A STATE HIGHWAY, A PERMIT MUST BE OBTAINED FROM THE STATE OF CALIFORNIA, DIVISION OF HIGHWAYS, 126 SOUTH SPRING STREET.

COUNTY OF LOS ANGELES, CALIFORNIA

APPROVED, JOHN A. LAMBIE, COUNTY ENGINEER APPROVED, JOHN D. PARKHURST, CHIEF ENGINEER  
CO. SAN. DIST. NO. 28

By: *Ernest S. Skand* ASST. SANITATION ENGINEER  
*J. P. Balthasar* OFFICE ENGINEER  
CHECKED BY: *SK. Dieder* 1-29-62  
OFFICE OF COUNTY ENGINEER, REG. C. E. NO. 9406

SUBMITTED: *N. F. Brannan*  
SAN GABRIEL VALLEY REGIONAL ENGINEER

**TEST HOLE No 2**  
**STARLIGHT CREST DRIVE**  
**& FRESH MEADOW DRIVE**

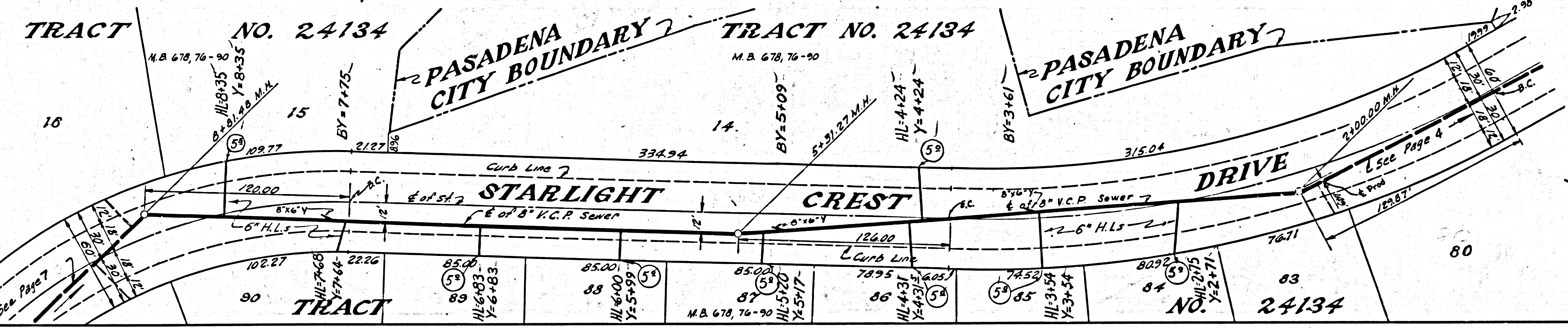
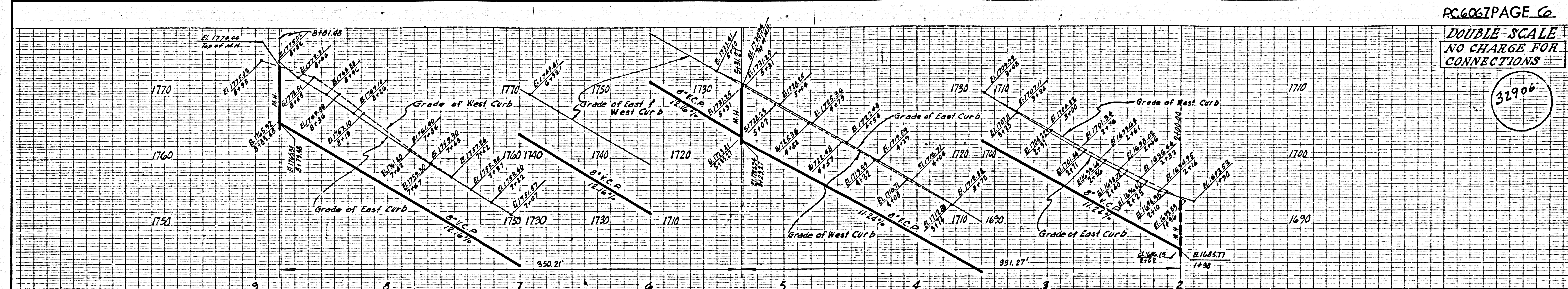
**NO CHARGE FOR CONNECTIONS**  
*A. L. Albertson 1/12/62*  
**ISSUE NO PERMITS UNTIL OUTLET IS CONSTRUCTED**





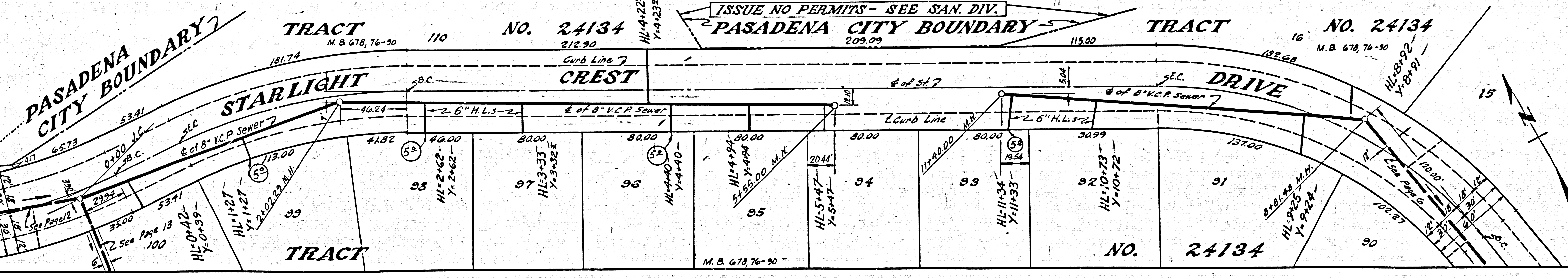
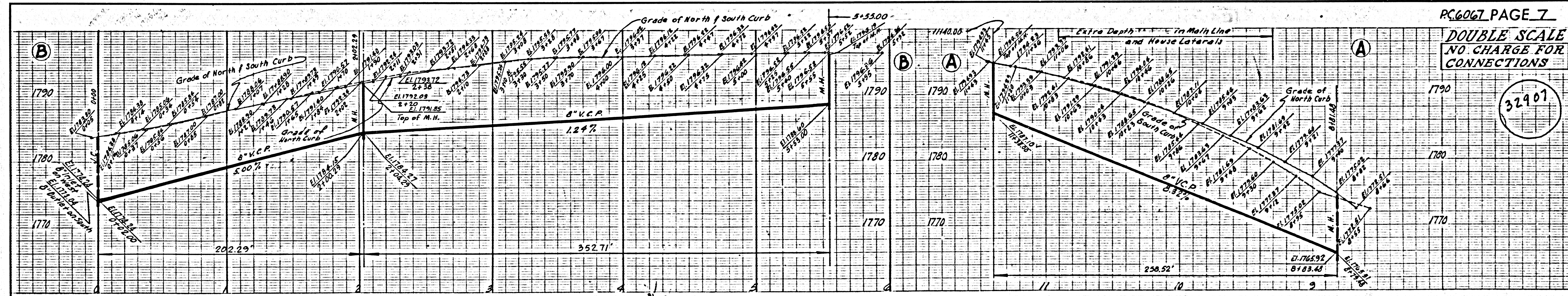
DOUBLE SCALE  
NO CHARGE FOR  
CONNECTIONS

32906



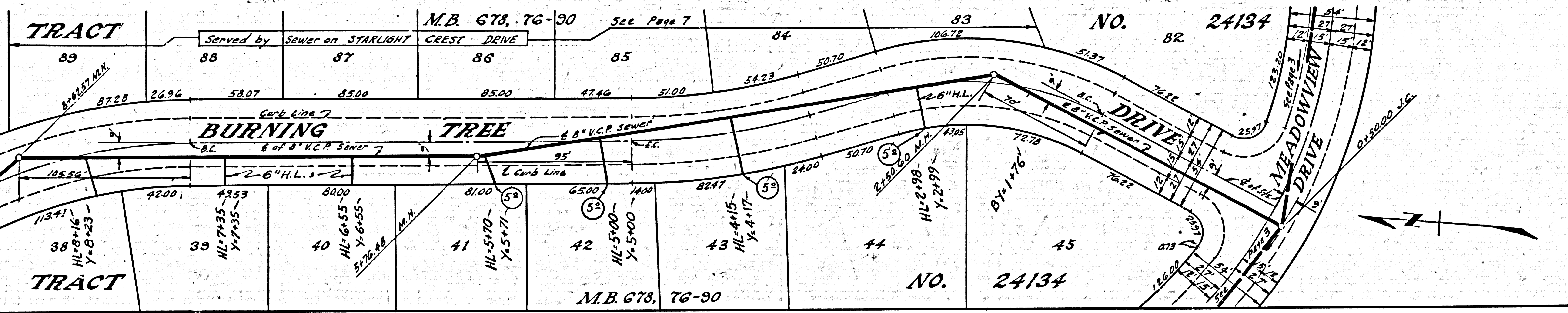
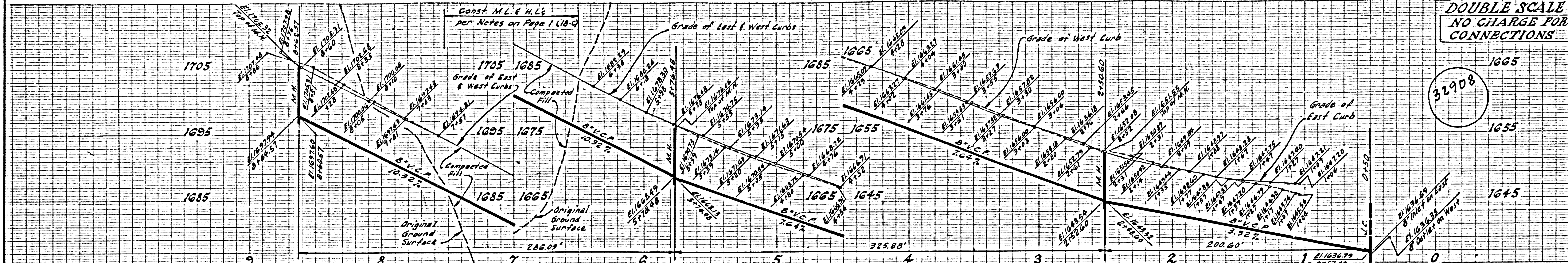
DOUBLE SCALE  
NO CHARGE FOR  
CONNECTIONS

32907

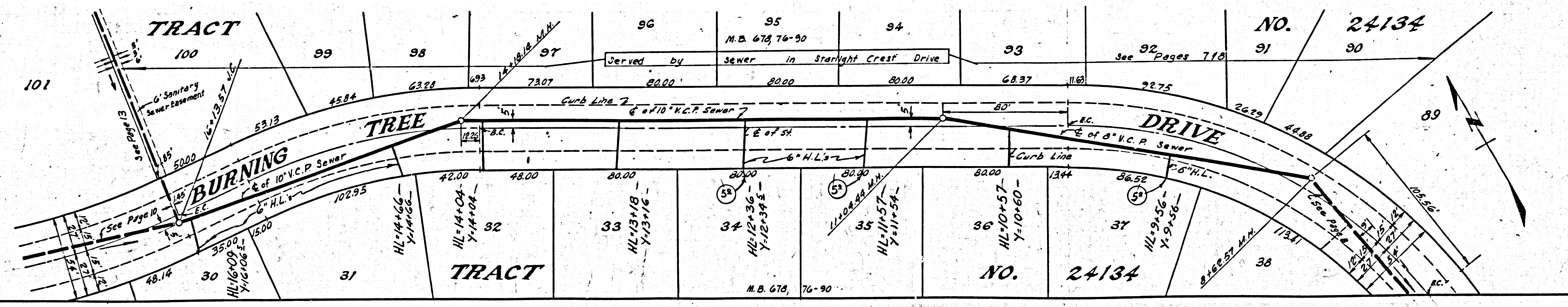
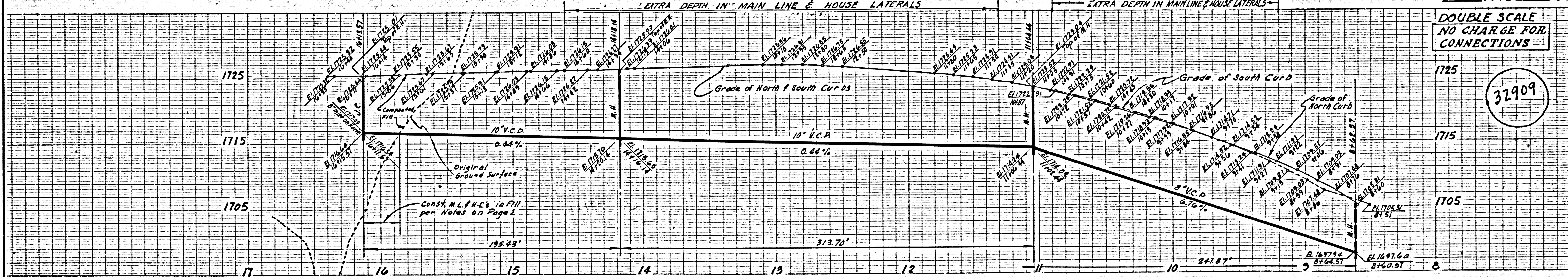


ISSUE NO PERMITS - SEE SAN. DIV.

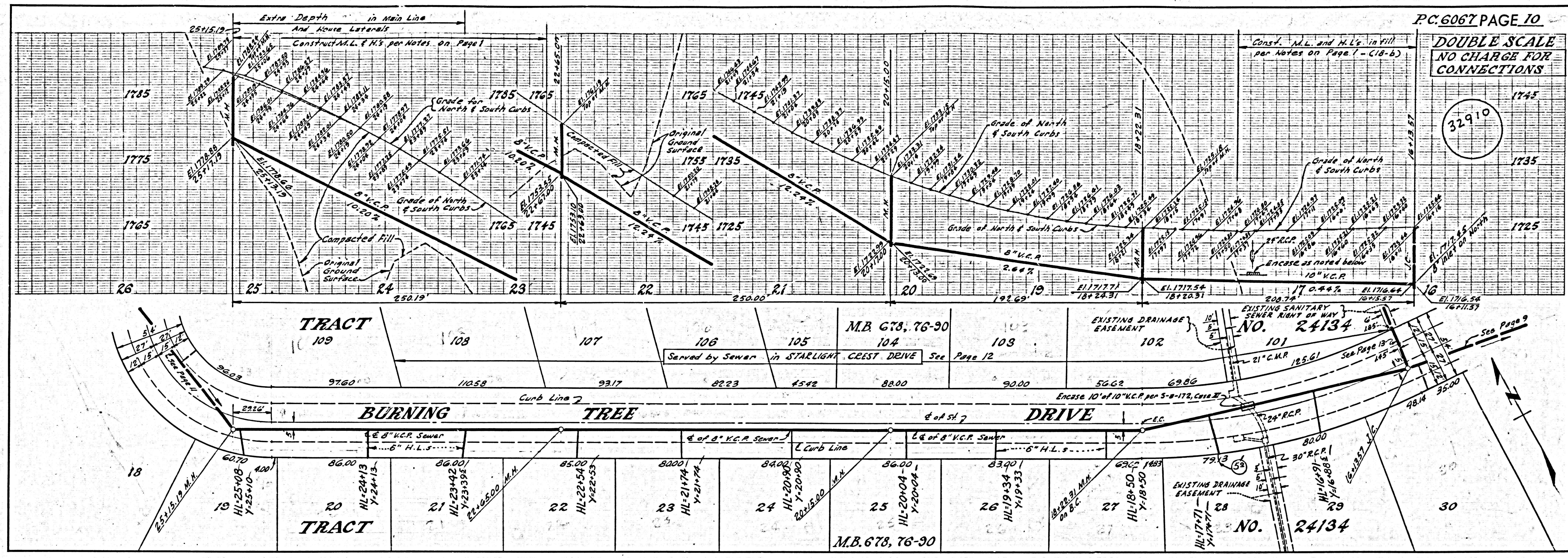
DOUBLE SCALE  
NO CHARGE FOR  
CONNECTIONS



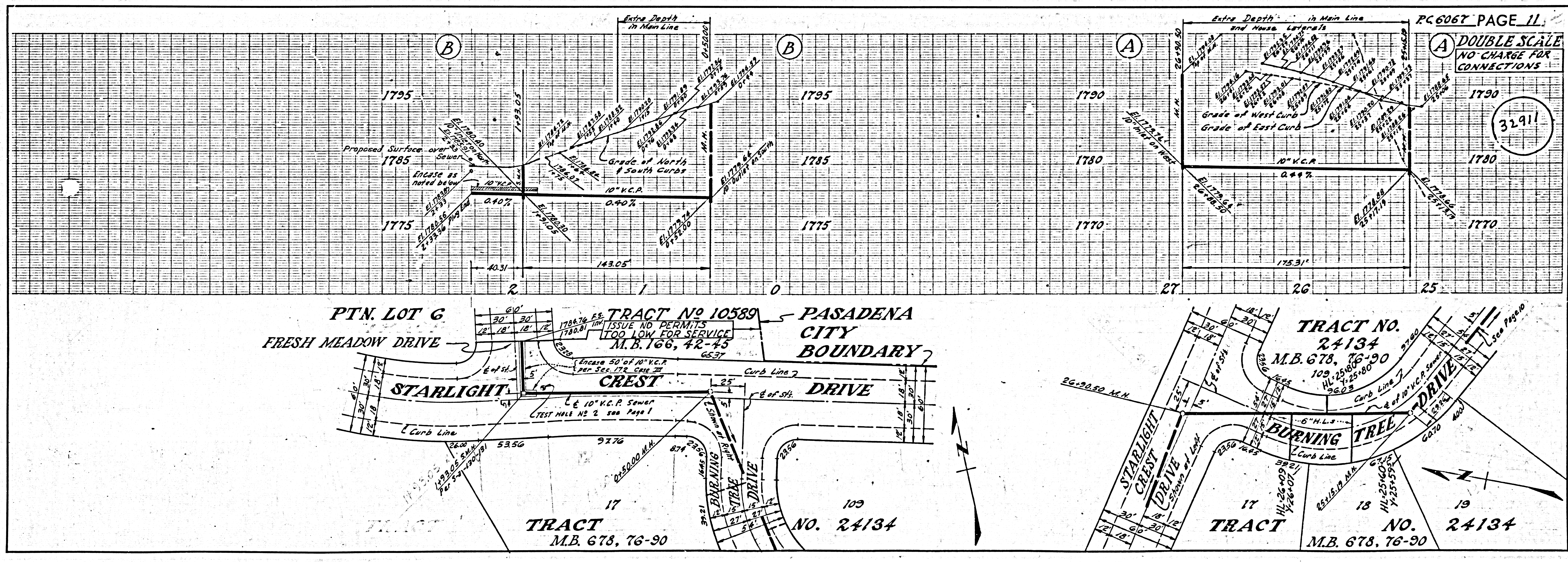
DOUBLE SCALE  
NO CHARGE FOR  
CONNECTIONS



DOUBLE SCALE  
NO CHARGE FOR  
CONNECTIONS

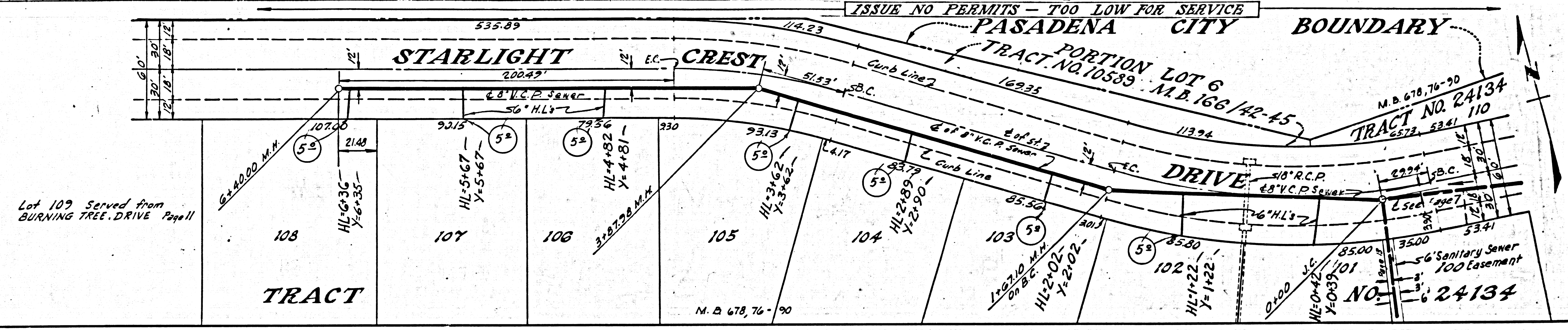
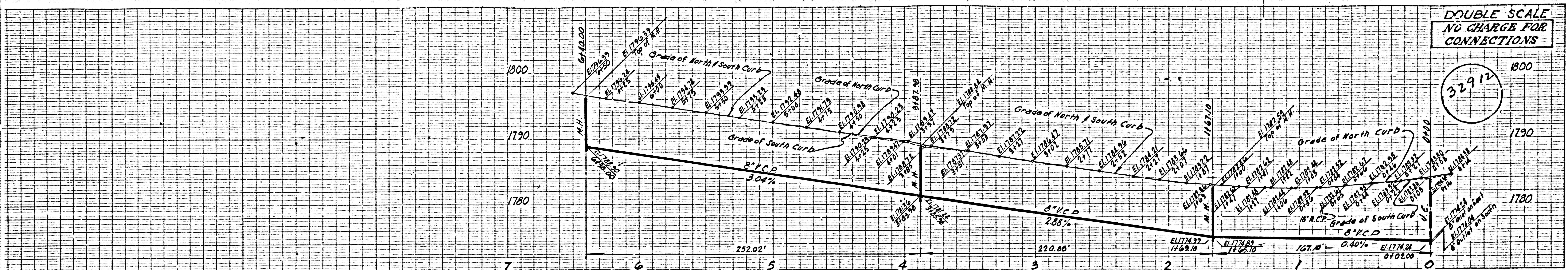


DOUBLE SCALE  
NO CHARGE FOR  
CONNECTIONS



DOUBLE SCALE  
NO CHARGE FOR  
CONNECTIONS

32912



DOUBLE SCALE  
NO CHARGE FOR  
CONNECTIONS

32913

