

TRACT NO. 26793
PRIVATE CONTRACT NO. 6070

W.S. 37
3 SHEETS; 5 PAGES

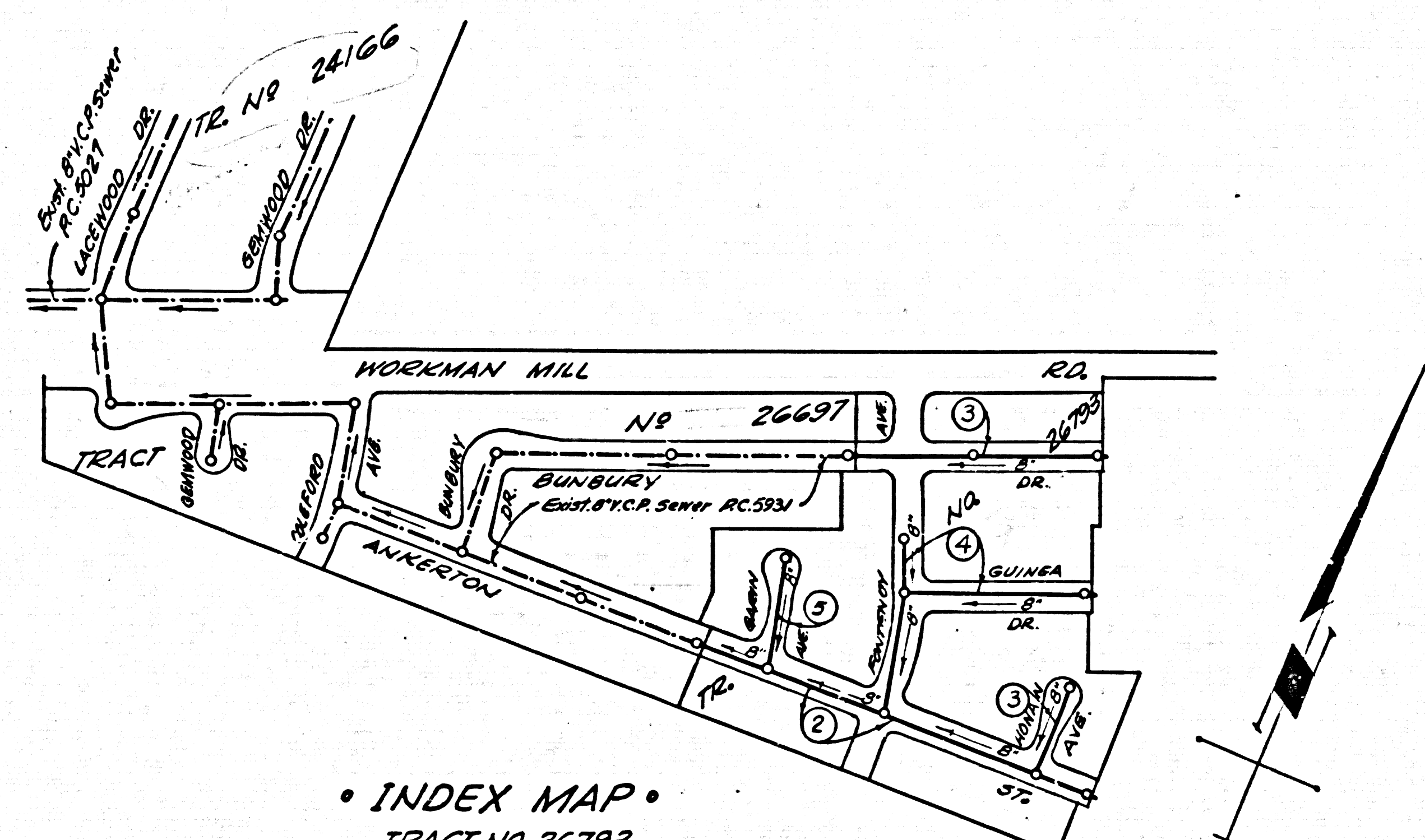
SCALE: VERT. 1"=4'
HORIZ. 1"=40' JUNE, 1961

PREPARED IN THE OFFICES OF
HANS C. THOMSEN

By: Hans C. Thomsen
REG. C. E. NO. 8224

FOR LEGEND SEE PLAN NO. S-A-44

32491



INDEX MAP
TRACT NO. 26793
Scale: 1"=300' RC. 6070

B.M. 11-122 F.B. 1376, P. 109
Workman Mill Rd. & Dirt Road to House No. 1329
11' N. of E. of Workman Mill Rd. & 12' S. E. from 18' Eucalyptus
Tree in well cut thru the pavement & protected by a cast iron
cover marked "County Surveyor Monument" a 5th County
Surveyors Monument, set in conc. 10' below the surface,
marked "B.M. 11-122 1952 R.C. 63" ELEV. 311.973
1959 Adj. ELEV. 311.975

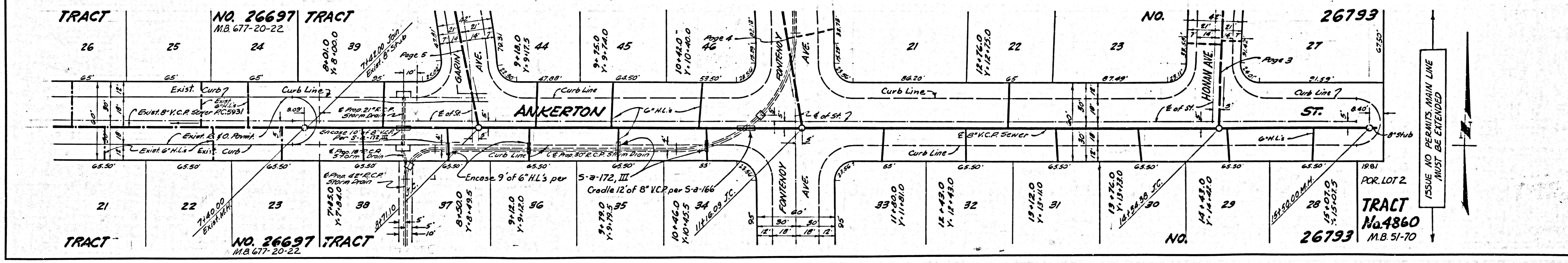
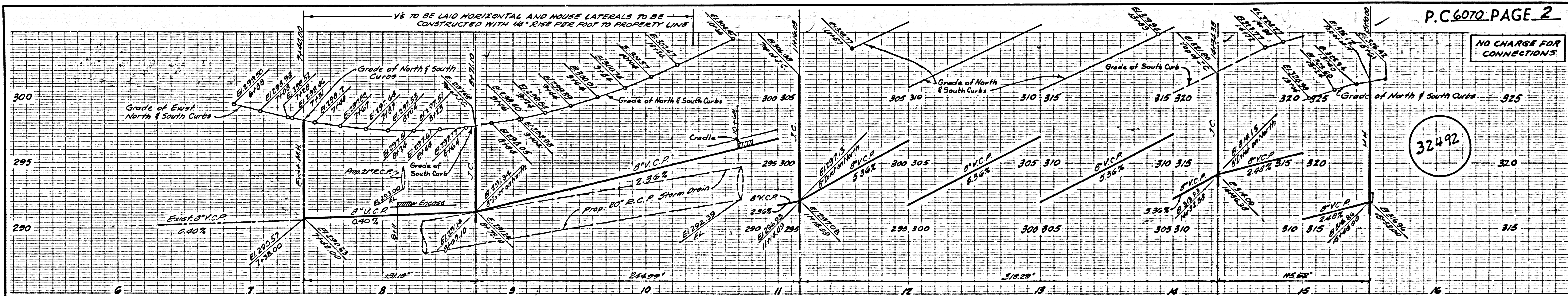
NO CHARGE FOR
CONNECTIONS
June 21, 1961

NO CONNECTIONS FOR THE DISPOSAL OF
INDUSTRIAL WASTES SHALL BE MADE TO
SEWERS SHOWN ON THESE DRAWINGS
WITHOUT WRITTEN PERMISSION FROM THE
CHIEF ENGINEER AND GENERAL MANAGER
OF THE COUNTY SANITATION DISTRICTS.

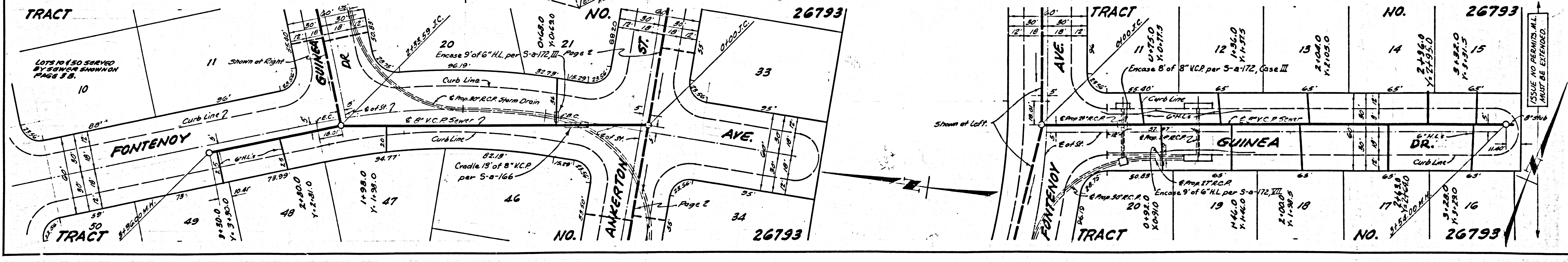
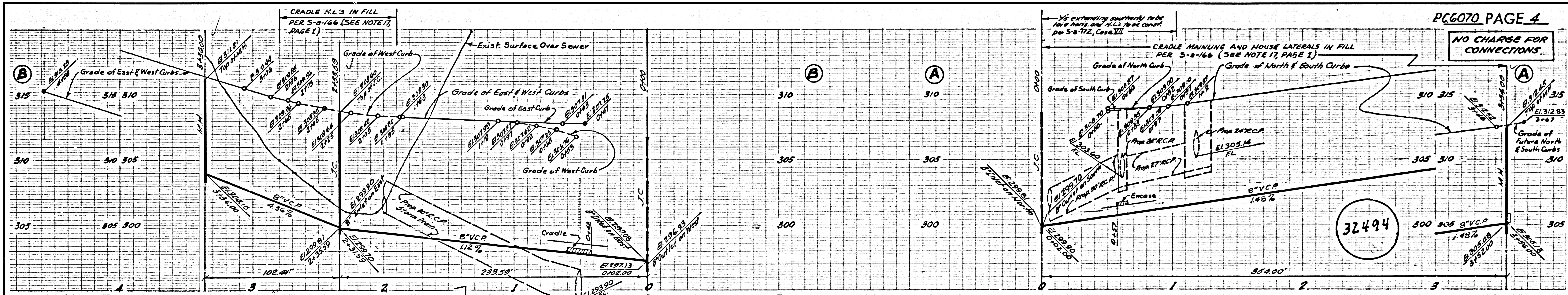
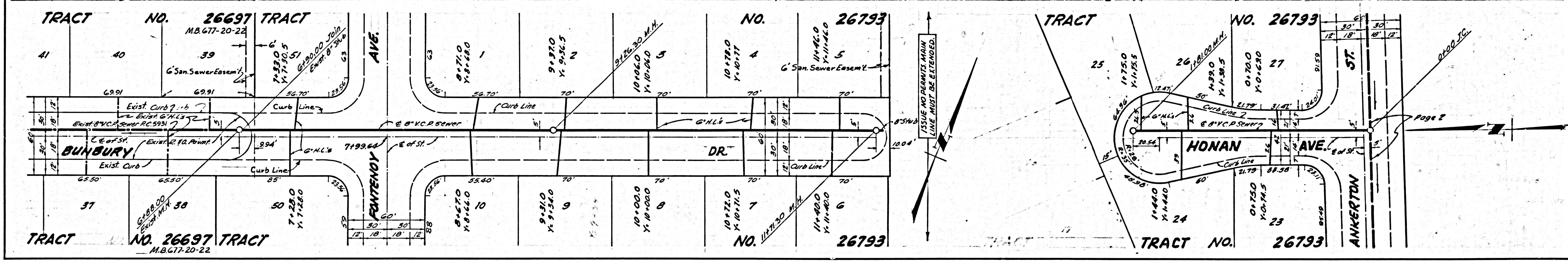
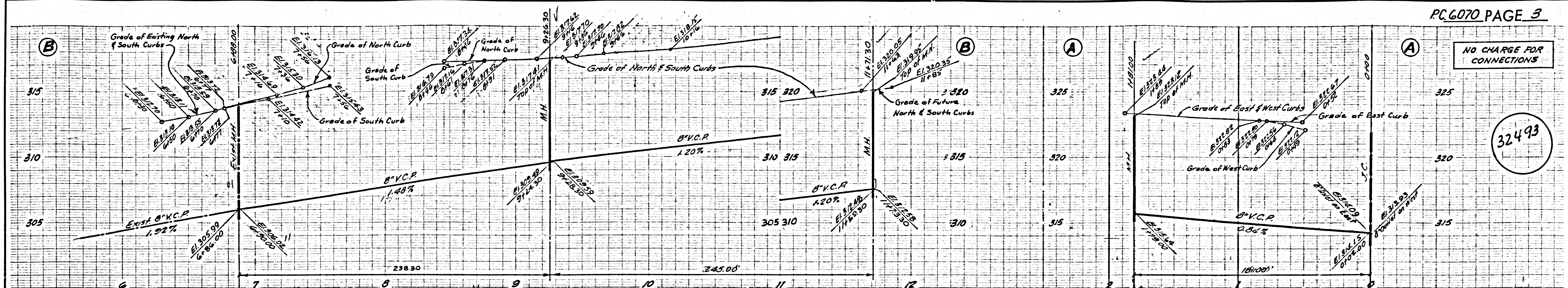
NOTES:
1. PROVIDE STAKES ON THE PROPERTY LINE OR PROPERTY LINES PRODUCED AT RIGHT ANGLES TO THE SEWER LINE AT THE CENTER LINE OF EACH MANHOLE.
2. NO REPRESENTATIVE OF THE COUNTY ENGINEER WILL SURVEY OR LAY OUT ANY PORTION OF THE WORK.
3. THE OWNER OR HIS AUTHORIZED REPRESENTATIVE SHALL FURNISH THE COUNTY ENGINEER WITH GRADE SHEETS AND STATIONING FOR ALL HOUSE LATERALS AND Y BRANCHES AND SHALL PROVIDE STAKES FOR THEM AT THEIR PROPER LOCATIONS WITH STATIONING PLAINLY MARKED. ANY CHANGE IN LOCATION SHALL BE REQUESTED IN WRITING BY THE OWNER OR HIS REPRESENTATIVE.
4. THE PRIVATE ENGINEER SHALL FURNISH THE HOUSE LATERAL DEPTH AT THE PROPERTY LINE BELOW THE TOP OF CURB ELEVATION FOR EACH HOUSE LATERAL ON THE GRADE SHEET.
5. NO REVISIONS SHALL BE MADE IN THESE PLANS WITHOUT THE APPROVAL OF THE COUNTY ENGINEER.
6. USE STANDARD MANHOLE FRAMES AND COVERS, S-117, 1' DIA. 15" DEPTH.
7. USE EXTRA STRENGTH PIPE, ALL PIPE STANDARD DEPTH.
8. USE CEMENT MORTAR OR "WEDGE-LOCK" OR "SPEED-SEAL" FOR ALL V.C.P. JOINTS PER SPEC., SECS. M & 48.
9. RESURFACE ALL TRENCH WITHIN PAVED AREA TO MEET L.A. COUNTY ROAD DEPT. OR CALIF. STATE HIGHWAY REQUIREMENTS IN ACCORDANCE WITH PERMITS.
10. ENCASE FOUR FEET OF SEWER AT POINTS OF INTERFERENCE WITH POLES, CASE III, S-117.
11. HOUSE LATERALS TO BE CONSTRUCTED WITH INVERTS AT PROPERTY LINE 6 FEET BELOW CURB GRADE EXCEPT AS NOTED.
12. MANHOLES SHALL BE BRICK SEWER STRUCTURES, S-104, PRECAST CONCRETE MANHOLES PER S-8-135, OR, S-8-173 MAY BE USED AS AN ALTERNATE IN LOCATIONS APPROVED BY THE COUNTY ENGINEER.
13. FOR ALLOWABLE LEAKAGE TEST USE FORMULA NO. 1 SPEC. SEC. 84.
14. MANHOLE TOPS IN UNIMPROVED RIGHTS-OF-WAY TO BE SIX INCHES ABOVE FINISHED GRADE.
15. THE CONTRACTOR SHALL NOTIFY THE CONSTRUCTION DIVISION BY TELEPHONE, MADISON 4-141, EXT. 8331 AT LEAST TWENTY-FOUR HOURS BEFORE STARTING ANY WORK UNDER THIS CONTRACT.
16. STANDARD SPECIFICATIONS DATED OCT. 25, 1961 SHALL APPLY IN THE CONSTRUCTION OF THIS PROJECT.
17. SEWERS IN FILLED GROUND SHALL BE PERMITTED IN FILLED AREA UNLESS ACCEPTABLE CERTIFICATION IS SUBMITTED TO THE COUNTY ENGINEER'S OFFICE. THE CERTIFICATION SHALL BE IN THE FORM OF A LETTER FROM THE COUNTY ENGINEER'S OFFICE. IF COMPLETION IS LESS THAN 90% THE SEWER MUST BE GRADED AS SHOWN IN THE PLANS PER S-8-135. C.P. COMPLETION IS GREATER THAN 90% OTHER GRADING FOR SPECIAL MANHOLE BENCHES WILL BE REQUIRED. HOWEVER, JOINT COMPOUND OR "WEDGE-LOCK" OR "SPEED-SEAL" MUST BE SUBSTITUTED FOR CEMENT MORTAR FOR ALL JOINTS IN FILLED AREAS.

GRADES TO WHICH THIS IMPROVEMENT IS TO BE CONSTRUCTED ARE SHOWN ON PLANS AND PROFILES. GRADE POINTS FOR TOP OF CURBS, CENTER LINE OF STREETS, OR CENTER LINE OF ALLEYS ARE SHOWN BY CIRCLES ON PROFILES. AT ALL POINTS BETWEEN DESIGNATED POINTS THE GRADE SHALL BE ESTABLISHED SO AS TO CONFORM TO A STRAIGHT LINE DRAWN BETWEEN SAID DESIGNATED POINTS.
ELEVATIONS ARE IN FEET ABOVE U.S.C. & G.S. SEA LEVEL DATUM OF 1929.
THIS DRAWING AND THE DATA HEREON ARE HEREBY MADE A PART OF THE SPECIFICATIONS.
WORK SHALL BE CONSTRUCTED ACCORDING TO SPECIFICATIONS ON FILE IN THE OFFICE OF THE COUNTY ENGINEER AND SHALL BE PROSECUTED ACCORDING TO SPECIFICATIONS ON FILE IN THE OFFICE OF THE COUNTY ENGINEER ROOM THE L. A. COUNTY ROAD DEPT., DISTRICT OFFICE NO. 100 AND PAY A FEE TO THE COUNTY ENGINEER INSPECTION AND RECORD PLANS.
APPROVAL OF THIS PLAN BY THE COUNTY OF LOS ANGELES DOES NOT CONSTITUTE A REPRESENTATION AS TO THE ACCURACY OF THE LOCATION OF OR THE EXISTENCE OR NON-EXISTENCE OF ANY UNDERGROUND UTILITY PIPE, OR STRUCTURE WITHIN THE LIMITS OF THIS PROJECT. THIS NOTE APPLIES TO ALL PAGES.
IF WORK IS TO BE DONE IN A STATE HIGHWAY, A PERMIT MUST BE OBTAINED FROM THE STATE OF CALIFORNIA, DIVISION OF HIGHWAYS, 130 SOUTH SPRING STREET.

COUNTY OF LOS ANGELES, CALIFORNIA
APPROVED, JOHN A. LAMBIE, COUNTY ENGINEER APPROVED, H. R. PARKHURST, CHIEF ENGINEER
NO. SAN. DIST. NO. 15
By: Hans C. Thomsen, ASST. SANITATION ENGINEER By: H. R. Parkhurst, OFFICE ENGINEER
CHECKED BY: H. R. Parkhurst, OFFICE OF COUNTY ENGINEER, REG. C. E. NO. 3496
SUBMITTED BY: W. C. Prindler, SAN DIMAS REGIONAL ENGINEER

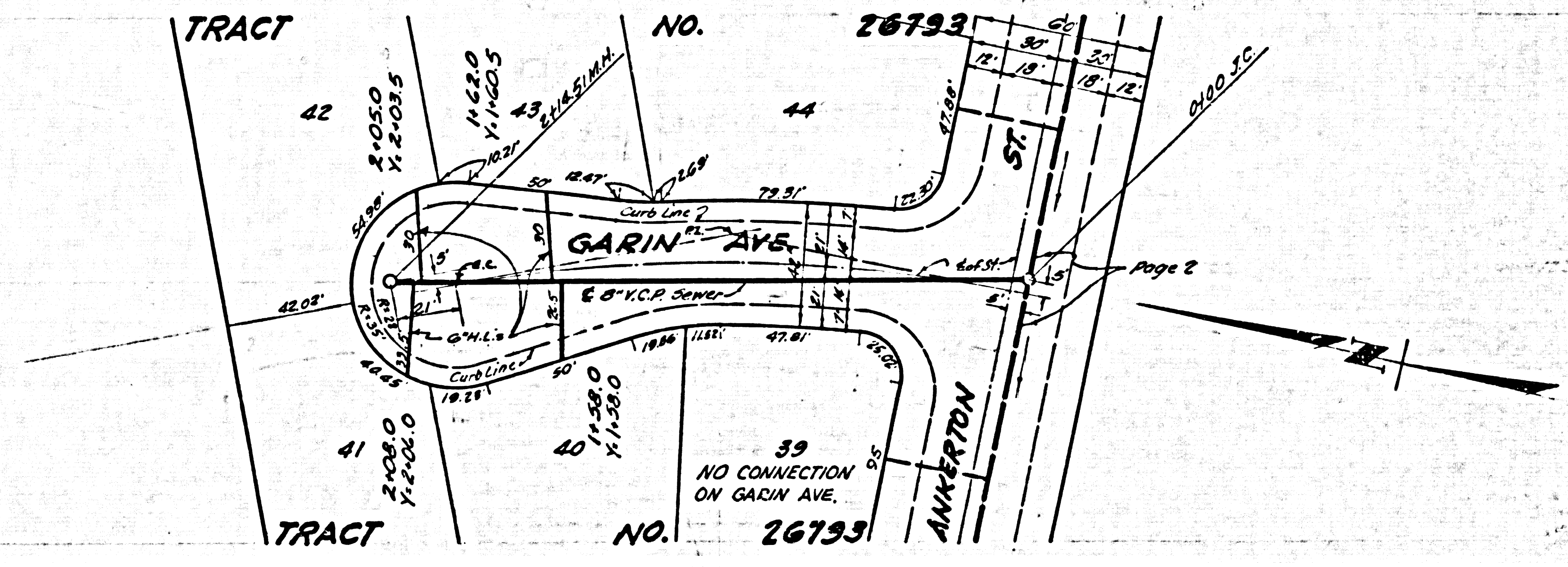
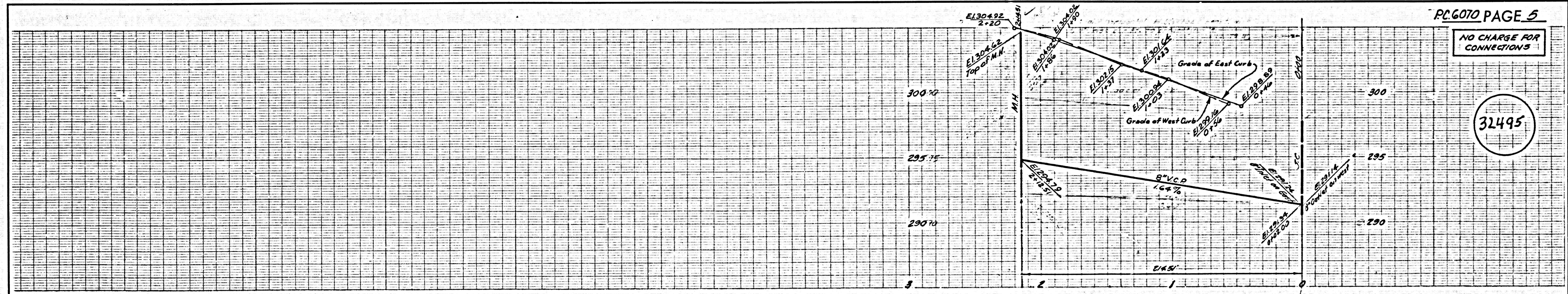


6070



NO CHARGE FOR CONNECTIONS

32495



3-1-60-6050-10V.C.P.-NO-5293