

LAKWOOD BLDG. DIST. NO. 4.3

PROFILE ALIGNMENT AND GRADE OF P.C. 6072
 SANITARY SEWERS PAGE 1
 TO BE CONSTRUCTED IN J.N. 0357.17

TRACT N° 26700

PRIVATE CONTRACT NO. 6072

W.S. 33

4 SHEETS; 7 PAGES

SCALE: VERT. 1" = 4' NOVEMBER, 1961
 HORIZ. 1" = 40' PREPARED IN THE OFFICES OF

32353

Edward J. Pearson
 REG. C. E. NO. 9183

FOR LEGEND SEE PLAN NO. S-A-64

NOTE: GRADES TO WHICH THIS IMPROVEMENT IS TO BE CONSTRUCTED ARE SHOWN ON PLANS AND PROFILES. GRADE POINTS FOR TOP OF CURBS, CENTER LINE OF STREETS, OR CENTER LINE OF ALLEYS ARE SHOWN BY CIRCLES ON PROFILES. AT ALL POINTS BETWEEN DESIGNATED POINTS THE GRADE SHALL BE ESTABLISHED SO AS TO CONFORM TO A STRAIGHT LINE DRAWN BETWEEN SAID DESIGNATED POINTS. ELEVATIONS ARE IN FEET ABOVE U.S.C. & G.S. SEA LEVEL DATUM OF 1929. THIS DRAWING AND THE DATA HEREON ARE HEREBY MADE A PART OF THE SPECIFICATIONS. WORK SHALL BE CONSTRUCTED ACCORDING TO SPECIFICATIONS ON FILE IN THE OFFICE OF THE COUNTY ENGINEER AND SHALL BE PROSECUTED ONLY IN THE PRESENCE OF THE COUNTY ENGINEER. BEFORE WORK CAN BE STARTED, THE CONTRACTOR MUST OBTAIN A PERMIT TO PAVEMENT IN COUNTY STREETS FROM THE L.A. COUNTY ROAD DIST. DISTRICT OFFICE NO. 2 AND PAY A FEE TO THE COUNTY ENGINEER ROOM 310 COUNTY ENGR. BLDG. 188 W. SECOND ST. SUFFICIENT TO COVER THE COST OF CONSTRUCTION INSPECTION AND RECORD PLANS. APPROVAL OF THIS PLAN BY THE COUNTY OF LOS ANGELES DOES NOT CONSTITUTE A REPRESENTATION AS TO THE ACCURACY OF THE LOCATION OF OR THE EXISTENCE OR NON-EXISTENCE OF ANY UNDERGROUND UTILITY PIPE, OR STRUCTURE WITHIN THE LIMITS OF THIS PROJECT. THIS NOTE APPLIES TO ALL PAGES. IF WORK IS TO BE DONE IN A STATE HIGHWAY, A PERMIT MUST BE OBTAINED FROM THE STATE OF CALIFORNIA, DIVISION OF HIGHWAYS, 120 SOUTH SPRING STREET.

COUNTY OF LOS ANGELES, CALIFORNIA

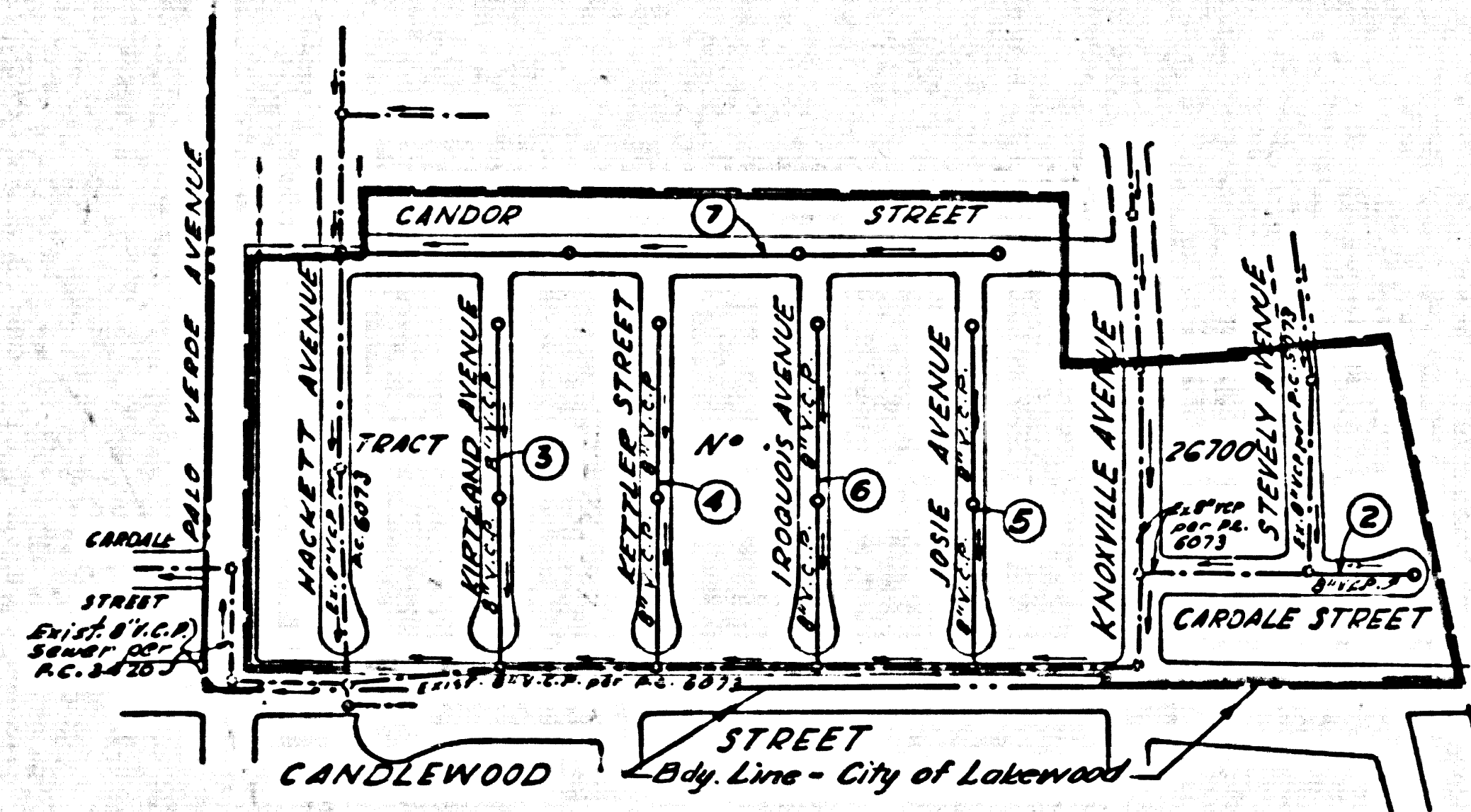
APPROVED, JOHN A. LAMBIE, COUNTY ENGINEER APPROVED, J.R. MCKENAST, CHIEF ENGINEER

BY *Robert E. Kellum* ASST. SANITATION ENGINEER BY *J. H. Matthews* OFFICE ENGINEER

CHECKED BY *S.K. Onda* 12-12-61
 OFFICE OF COUNTY ENGINEER, REG. C. E. NO. 7466

SUBMITTED BY *John J. Carter* 12-12-61
 LOS CERRITOS REGIONAL ENGINEER, REG. C. E. NO. 3874

LOTS NUMBERED 1 THROUGH 25,
 122 THROUGH 136 AND 144
 THROUGH 163
 SERVED BY SEWERS CONSTRUCTED
 UNDER P.C. No 6073



KEY MAP
 SCALE: 1" = 300'
 TRACT N° 26700
 P.C. 6072
 J.N. 0357.17

BENCH MARK

B.M. 5X.5017 1st South Curbs 23 West
 B.C.R. South-West Cor. 2nd Verge of
 Candorwood St. + 38' South & 68' West
 of & Int. marked (B.M.) (Base Line)
 Elev. 49.161 (1955)

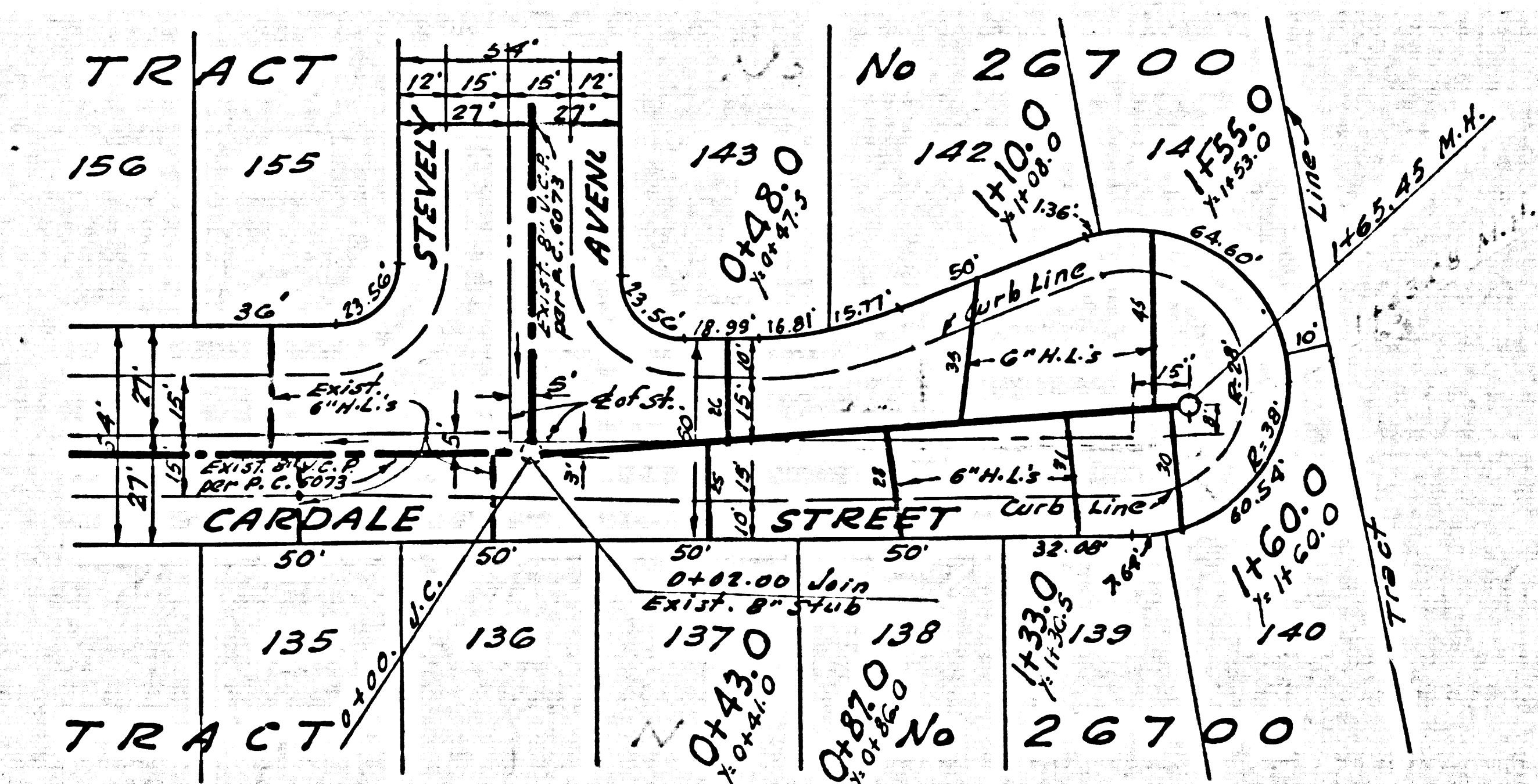
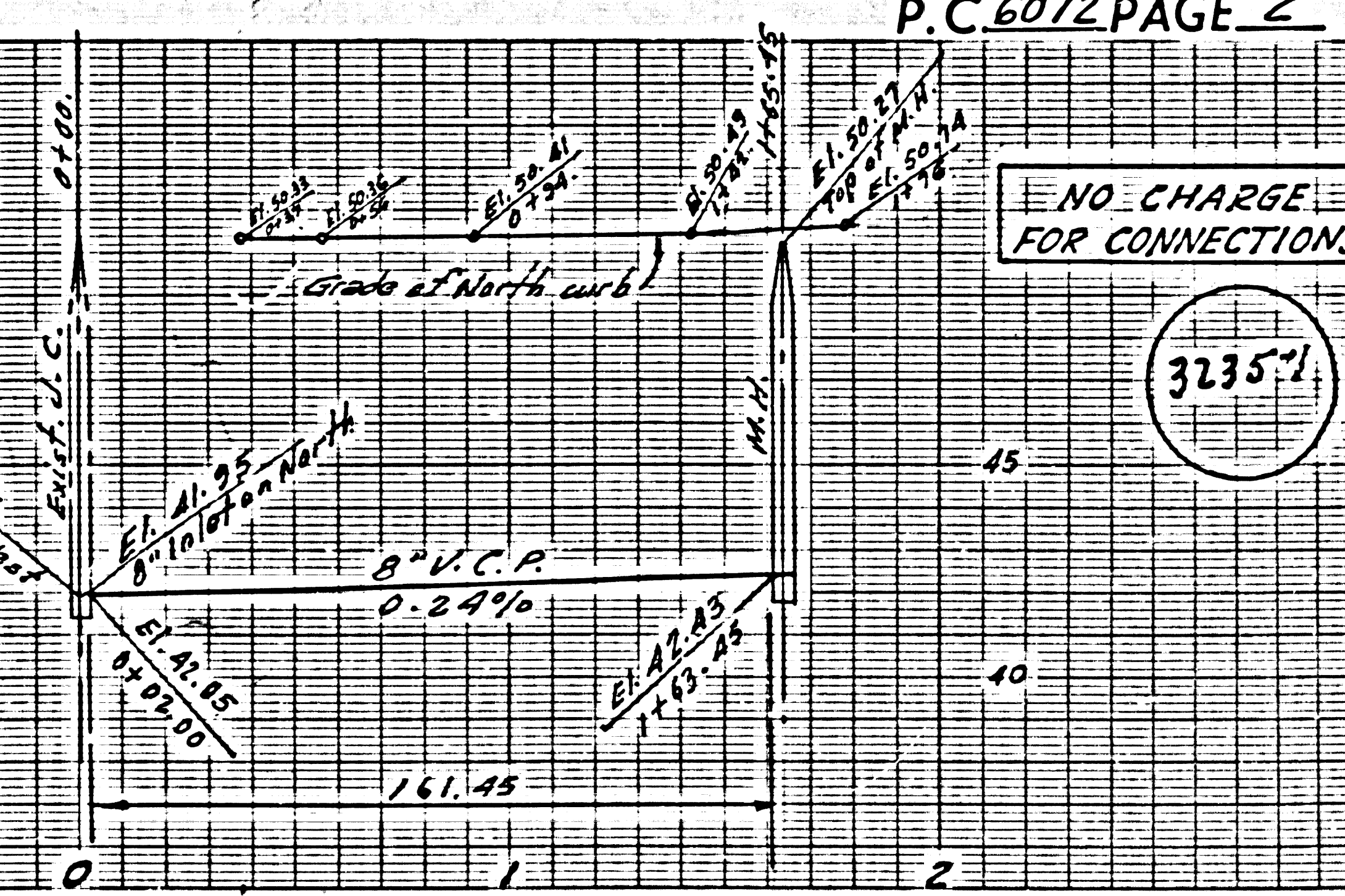
NO CHARGE
 FOR CONNECTIONS

J.R. Pearson 12-12-61

- NOTES:
1. PROVIDE STAKES ON THE PROPERTY LINE OR PROPERTY LINES PRODUCED AT RIGHT ANGLES TO THE SEWER LINE AT THE CENTER LINE OF EACH MANHOLE.
 2. NO REPRESENTATIVE OF THE COUNTY ENGINEER WILL SURVEY OR LAY OUT ANY PORTION OF THE WORK.
 3. THE OWNER OR HIS AUTHORIZED REPRESENTATIVE SHALL FURNISH THE COUNTY ENGINEER WITH GRADE SHEETS AND STATIONING FOR ALL HOUSE LATERALS AND Y BRANCHES AND SHALL PROVIDE STAKES FOR THEM AT THEIR PROPER LOCATIONS WITH STATIONING PLAINLY MARKED. ANY CHANGE IN LOCATION SHALL BE REQUESTED IN WRITING BY THE OWNER OR HIS REPRESENTATIVE.
 4. THE PRIVATE ENGINEER SHALL FURNISH THE HOUSE LATERAL DEPTH AT THE PROPERTY LINE BELOW THE TOP OF CURB ELEVATION FOR EACH HOUSE LATERAL ON THE GRADE SHEET.
 5. NO REVISIONS SHALL BE MADE IN THESE PLANS WITHOUT THE APPROVAL OF THE COUNTY ENGINEER.
 6. USE STANDARD MANHOLE FRAMES AND COVERS, S-117, 1' DIA. AT TOP.
 7. USE EXTRA STRENGTH PIPE. ALL PIPE IS STANDARD DEPTH.
 8. USE GUNNERS MORTAR OR "WEDGE-LOCK" OR "SEED-SEAL" FOR ALL V.C.P. JOINTS PER SPEC'S, SEC. 16 & 18.
 9. RESURFACE ALL TRENCH WITHIN PAVED AREA TO MEET LA. COUNTY ROAD DEPT. OR CALIF. STATE HIGHWAY REQUIREMENTS IN ACCORDANCE WITH PERMITS.
 10. ENCASE FOUR FEET OF SEWER AT POINTS OF INTERFERENCE WITH POLES, CASE III, S-172.
 11. HOUSE LATERALS TO BE CONSTRUCTED WITH INVERTS AT PROPERTY LINE .6 FEET BELOW CURB GRADE EXCEPT AS NOTED.
 12. ALL STRUCTURES SHALL BE BRICK SEWER STRUCTURES, S-104, UNLESS AS NOTED.
 13. FOR ALLOWABLE LEAKAGE TEST USE FOAMULA NO. 2 SPEC'S, SEC. 54.
 14. MANHOLE TOPS IN UNIMPROVED RIGHTS-OF-WAY TO BE SIX INCHES ABOVE FINISHED GRADE.
 15. THE CONTRACTOR SHALL NOTIFY THE CONSTRUCTION DIVISION BY TELEPHONE, MADISON 9-4747, EXT. 21-561, AT LEAST TWENTY-FOUR HOURS BEFORE STARTING ANY WORK UNDER THIS CONTRACT.
 16. STANDARD SPECIFICATIONS DATED OCTOBER 25, 1961 APPLY IN THE CONSTRUCTION OF THIS PROJECT.
 17. THE EXISTENCE AND LOCATION OF ANY UNDERGROUND UTILITY PIPES OR STRUCTURES SHOWN ON THESE PLANS ARE OBTAINED BY A SEARCH OF THE AVAILABLE RECORDS. TO THE BEST OF OUR KNOWLEDGE THERE ARE NO EXISTING UTILITIES EXCEPT AS SHOWN ON THIS MAP. THE CONTRACTOR IS REQUESTED TO TAKE DUE PRECAUTIONARY MEASURES TO PROTECT THE UTILITY LINES SHOWN AND ANY OTHER LINES NOT ON RECORD OR NOT SHOWN ON THIS DRAWING.

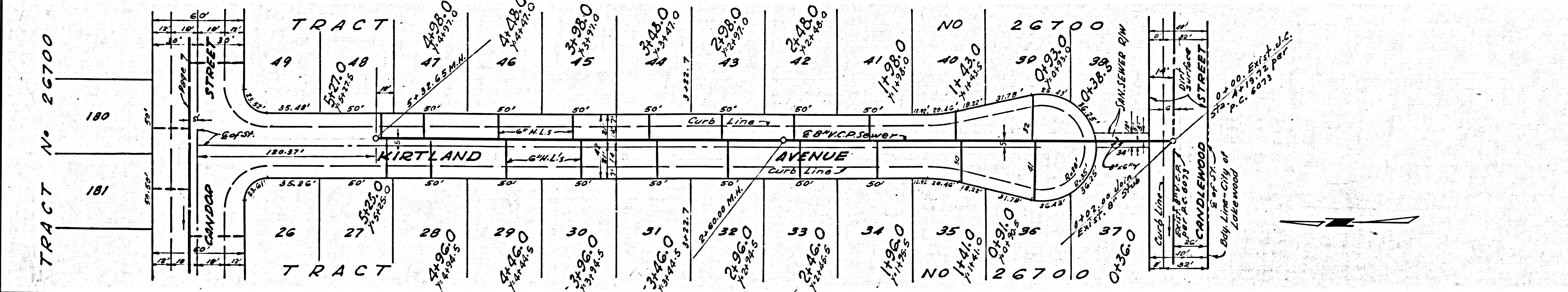
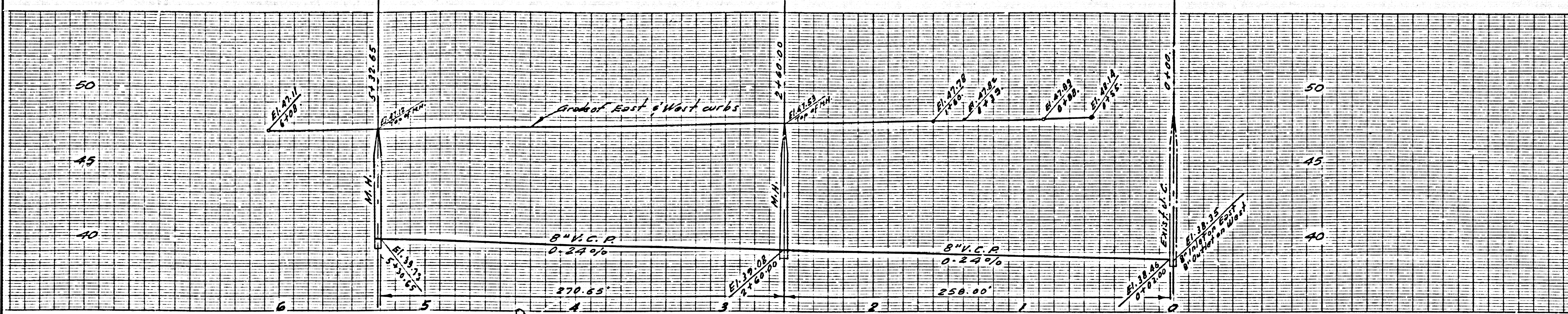
NO CONNECTIONS FOR THE DISPOSAL OF INDUSTRIAL WASTES SHALL BE MADE TO SEWERS SHOWN ON THESE DRAWINGS WITHOUT WRITTEN PERMISSION FROM THE CHIEF ENGINEER AND GENERAL MANAGER OF THE COUNTY SANITATION DISTRICT.

P.C. 6072 PAGE 2



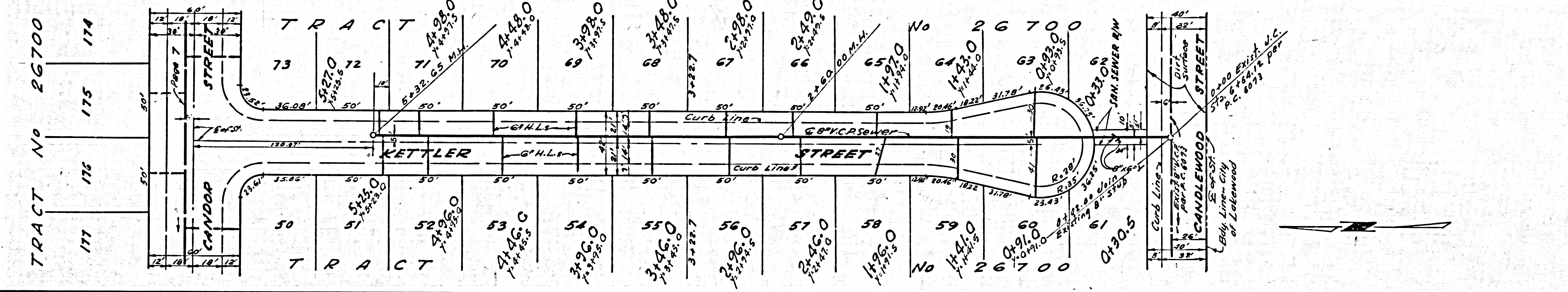
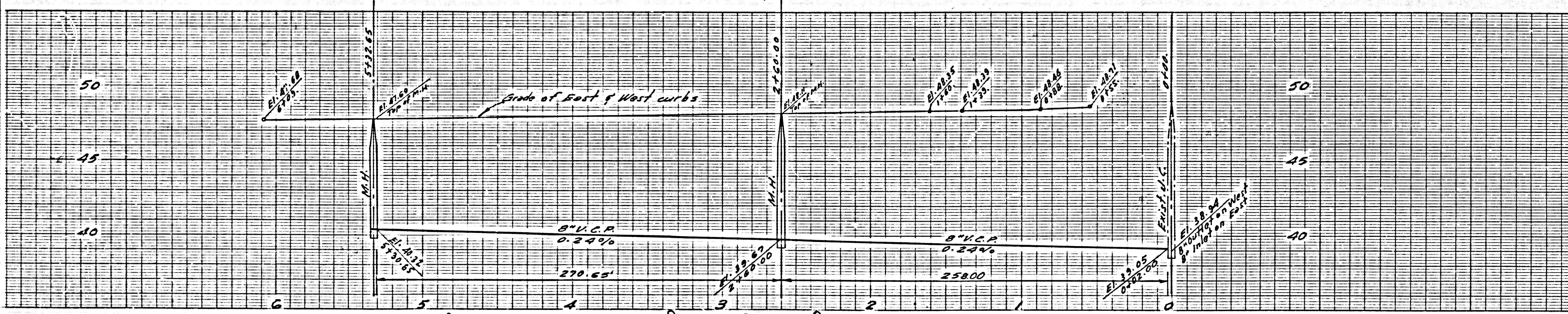
NO CHARGE FOR CONNECTIONS

32355



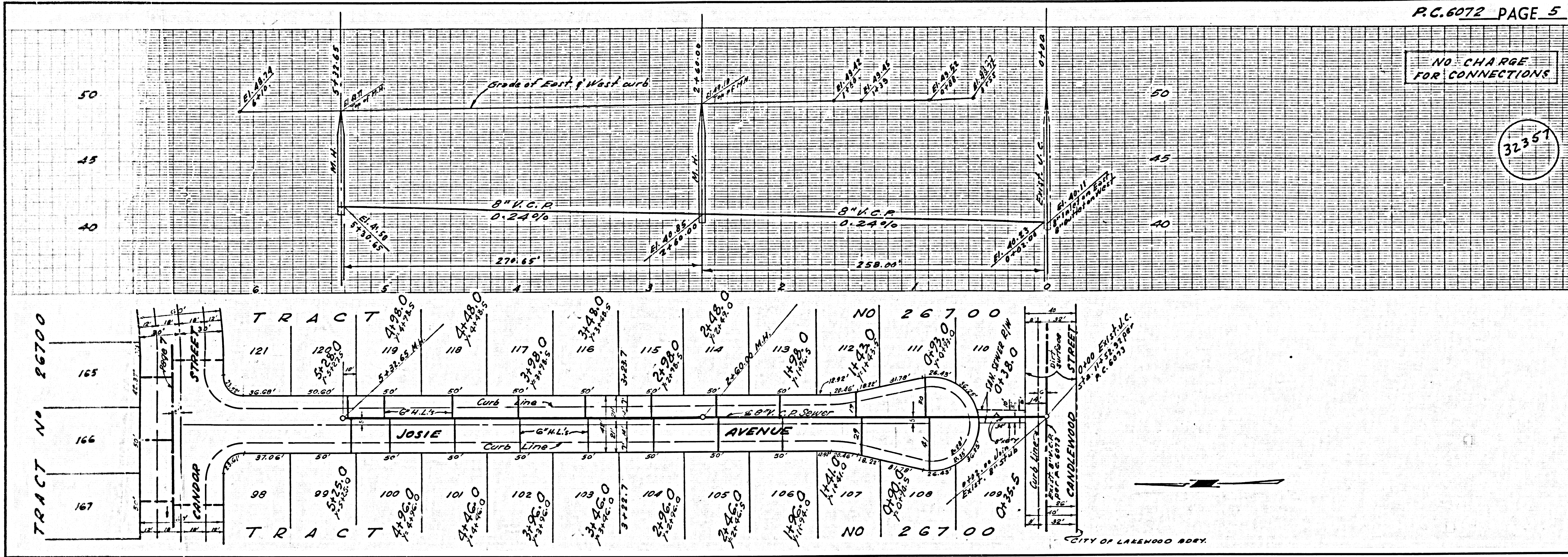
NO CHARGE FOR CONNECTIONS

32356



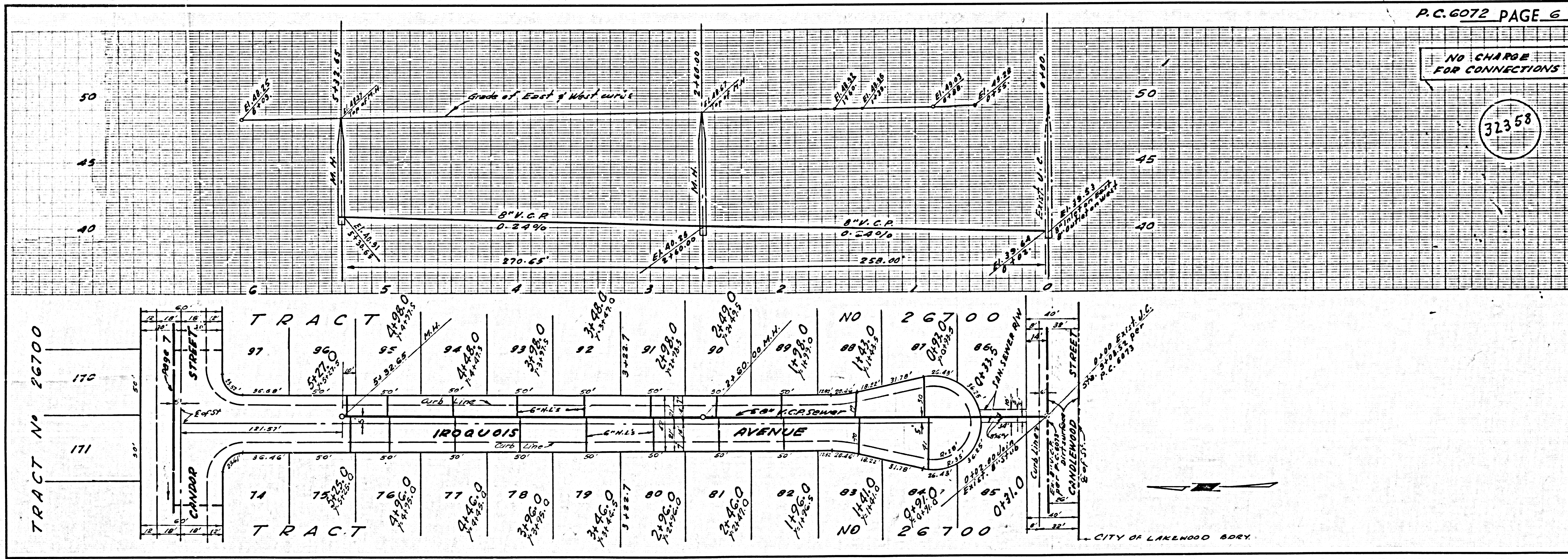
NO CHARGE FOR CONNECTIONS

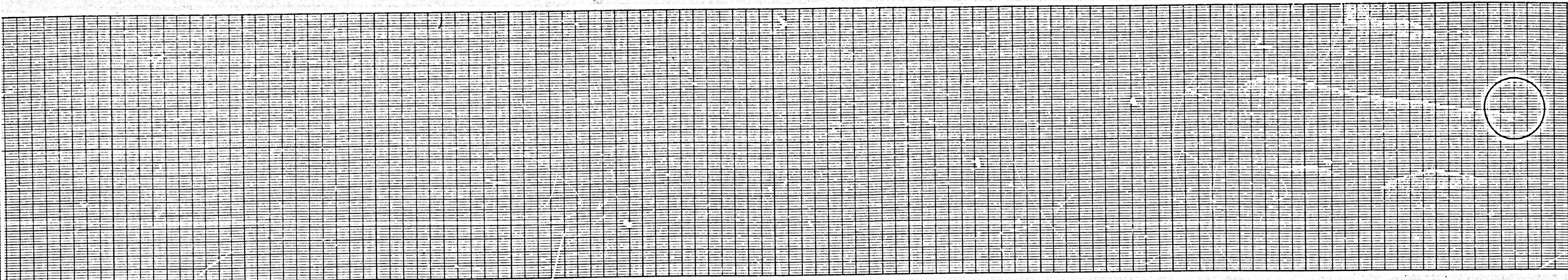
32357



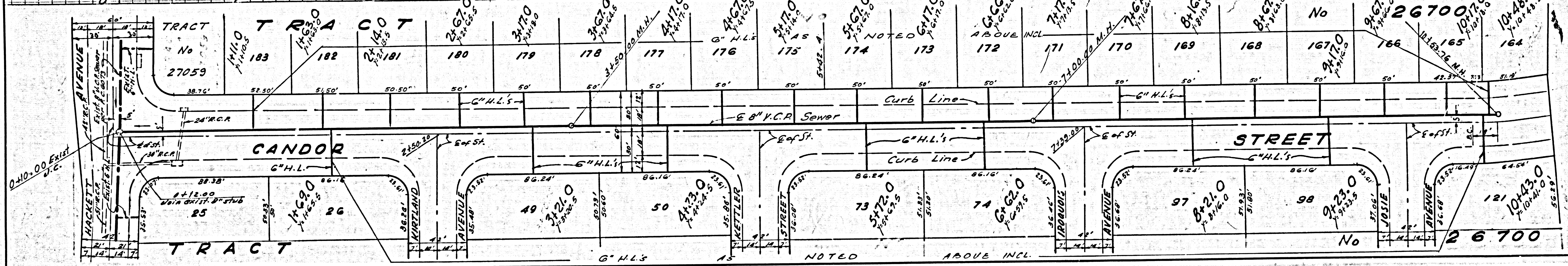
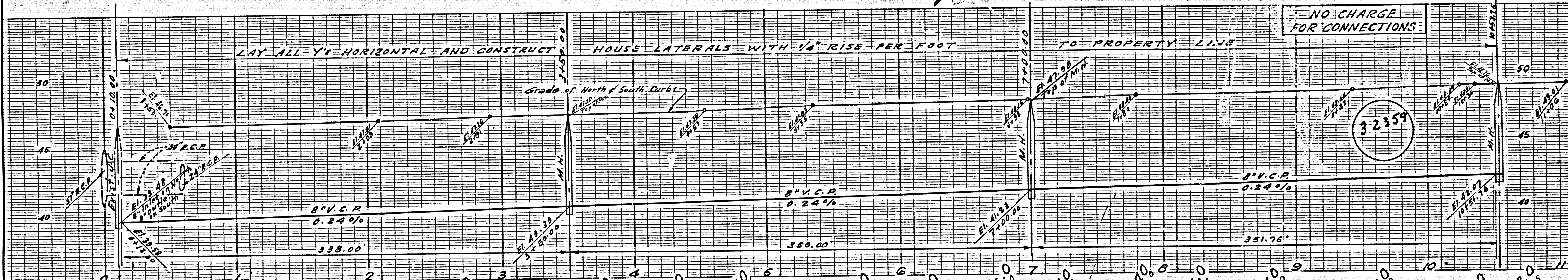
NO CHARGE FOR CONNECTIONS

32358





PC. 6072 PAGE 7



NO CHARGE FOR CONNECTIONS TO PROPERTY LINE

LAY ALL Y'S HORIZONTAL AND CONSTRUCT HOUSE LATERALS WITH 1/8\"/>

Grade of North & South Curbs

8\"/>

8\"/>

32359

32359

32359