

**KEY MAP**  
SCALE: 1"=300'  
TRACT No 27059  
P.C. 6073  
J.N. 0357.18

Revision: 3-26-1962  
Page 2: Extended 8" V.C.P. from Sta. 12+44.33 to Sta. 12+60.25. Revised 8" S.V.L. to 8" 6" V. Stub.  
Approved: *John D. Rose*  
Reg. C.E. No. 12437

**BENCH MARK**  
B.M.S. 5017 L&T South Curb 13 West  
B.C.R. South West cor. Palo Verde &  
Candlewood St. 738 S. & 22 W. of E. Inter. marked  
(B.M.) (Base Line)  
Elev. 49.161 (1955)

**NO CHARGE FOR CONNECTIONS**  
*William G. Haglund 12-11-61*

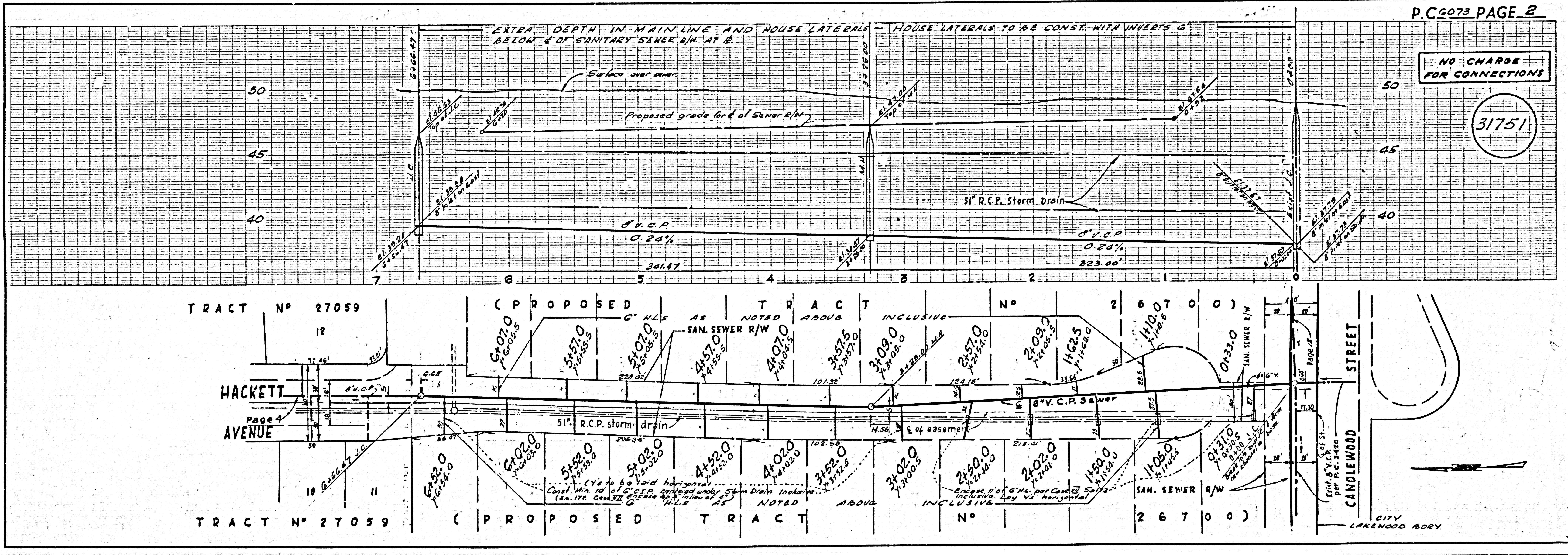
**LAKEWOOD BLDG. DIST. NO. 43**

- NOTES:
1. PROFILE STAKES ON THE PROPERTY LINE OR PROPERTY LINES PRODUCED AT RIGHT ANGLES TO THE SEWER LINE AT THE CENTER LINE OF EACH MANHOLE.
  2. NO REPRESENTATIVE OF THE COUNTY ENGINEER WILL SURVEY OR LAY OUT ANY PORTION OF THE WORK.
  3. THE OWNER OR HIS AUTHORIZED REPRESENTATIVE SHALL FURNISH THE COUNTY ENGINEER WITH GRADE SHEETS AND STATIONING FOR ALL HOUSE LATERALS AND Y BRANCHES AND SHALL PROVIDE STAKES FOR THEM AT THEIR PROPER LOCATIONS WITH STATIONING PLAINLY MARKED. ANY CHANGE IN LOCATION SHALL BE REQUESTED IN WRITING BY THE OWNER OR HIS REPRESENTATIVE.
  4. THE PRIVATE ENGINEER SHALL FURNISH THE HOUSE LATERAL DEPTH AT THE PROPERTY LINE BELOW THE TOP OF CURB ELEVATION FOR EACH HOUSE LATERAL ON THE GRADE SHEET.
  5. NO REVISIONS SHALL BE MADE IN THESE PLANS WITHOUT THE APPROVAL OF THE COUNTY ENGINEER.
  6. USE STANDARD MANHOLE FRAMES AND COVERS, 5-11".
  7. USE EXTRA STRENGTH PIPE. ALL PIPE IS STANDARD DEPTH, EXCEPT AS NOTED.
  8. USE "WIDGELOCK" OR "SPEED-SEAL" FOR ALL V.C.P. JOINTS PER SPECS., SECS. 34 & 44.
  9. RESURFACE ALL TRENCH WITHIN 5' RAYD AREA TO MEET L.A. COUNTY ROAD DEPT. OR CALIF. STATE HIGHWAY REQUIREMENTS IN ACCORDANCE WITH "EMITL".
  10. ENCASE FOUR FEET OF SEWER AT POINTS OF INTERFERENCE WITH POLES, CASE III, 5-117. OR R/W LINE.
  11. HOUSE LATERALS TO BE CONSTRUCTED WITH 1/4" RISE PER FOOT TO PROPERTY LINE, EXCEPT AS NOTED.
  12. ALL STRUCTURES SHALL BE BRICK SEWER STRUCTURES, 5-104, EXCEPT AS NOTED.
  13. FOR ALLOWABLE LEAKAGE TEST USE FORMULA NO. 2, SPECS., SEC. 54.
  14. MANHOLE TOPS IN UNIMPROVED RIGHTS-OF-WAY TO BE SIX INCHES ABOVE FINISHED GRADE.
  15. THE CONTRACTOR SHALL NOTIFY THE CONSTRUCTION DIVISION BY TELEPHONE, MADISON 9-476, BY MAIL, AT LEAST TWENTY-FOUR HOURS BEFORE STARTING ANY WORK UNDER THIS CONTRACT.
  16. Standard specifications dated October 25, 1961 apply in the construction of this project.
  17. The existence and location of any underground utility pipes or structures shown on these plans are obtained by a search of the available records. To the best of our knowledge there are no existing utilities except as shown on this map. The contractor is required to take due precautionary measures to protect the utility lines shown and any other lines not of record or not shown on this drawing.

31750-31764 PROFILE ALIGNMENT AND GRADE OF P.C. 6073  
**SANITARY SEWERS PAGE 1**  
TO BE CONSTRUCTED IN J.N. 0357.18  
**TRACT No 27059**  
**PRIVATE CONTRACT NO. 6073**  
W.S. 31  
8 SHEETS; 15 PAGES  
SCALE: VERT. 1"=4' HORIZ. 1"=40'  
NOVEMBER, 1961  
PREPARED IN THE OFFICES OF  
**BARCLAY-PEARSON Co., INC.**  
By: *Edward J. Pearson*  
REG. C.E. NO. 9158  
FOR LEGEND SEE PLAN NO. S-A-64

COUNTY OF LOS ANGELES, CALIFORNIA  
APPROVED, JOHN A. LAMBIE, COUNTY ENGINEER APPROVED, J.A. MATHIAS, CHIEF ENGINEER  
SANITATION ENGINEER OFFICE ENGINEER  
CHECKED BY: *Bill White 12-12-61*  
OFFICE OF COUNTY ENGINEER, REG. C.E. NO. 2496  
SUBMITTED BY: *John L. Epton 12-11-61*  
L.A. COUNTY REGISTERED ENGINEER, CERT. 2871

NO CONNECTIONS FOR THE DISPOSAL OF INDUSTRIAL WASTES SHALL BE MADE TO SEWERS SHOWN ON THESE DRAWINGS WITHOUT WRITTEN PERMISSION FROM THE CHIEF ENGINEER AND GENERAL MANAGER OF THE COUNTY SANITATION DISTRICTS.



P.C. 6073 PAGE 2

**NO CHARGE FOR CONNECTIONS**

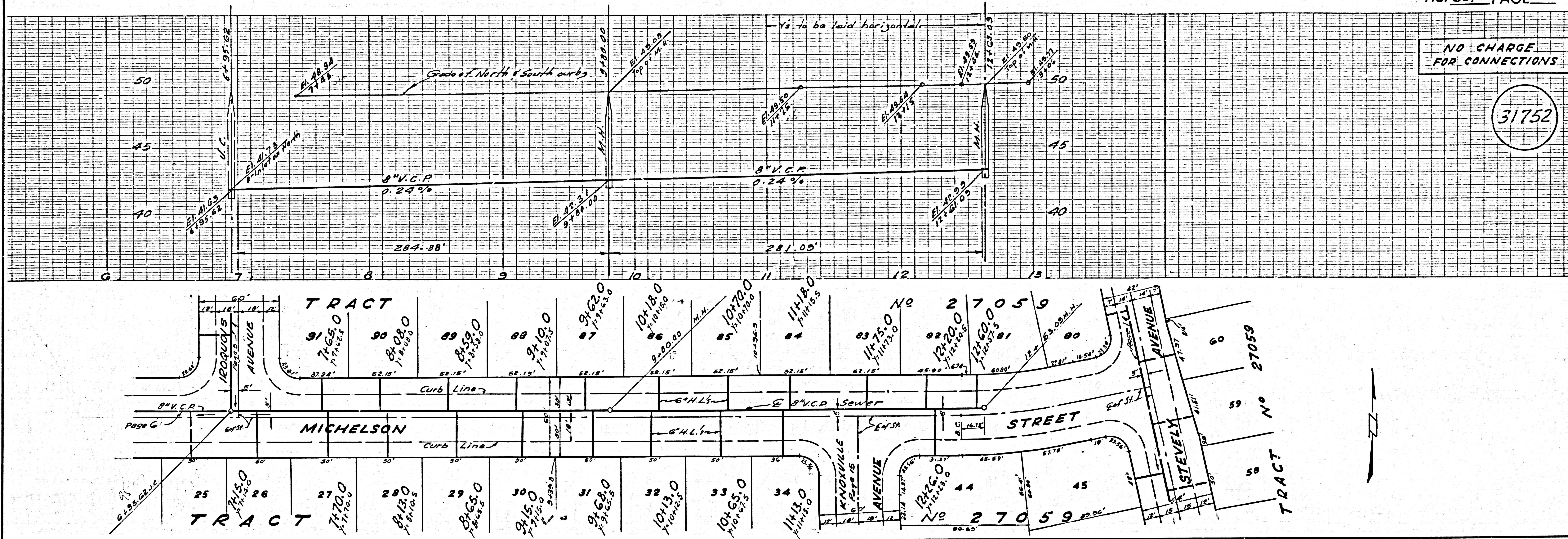
31751

3100 29-2075 25 201 73991



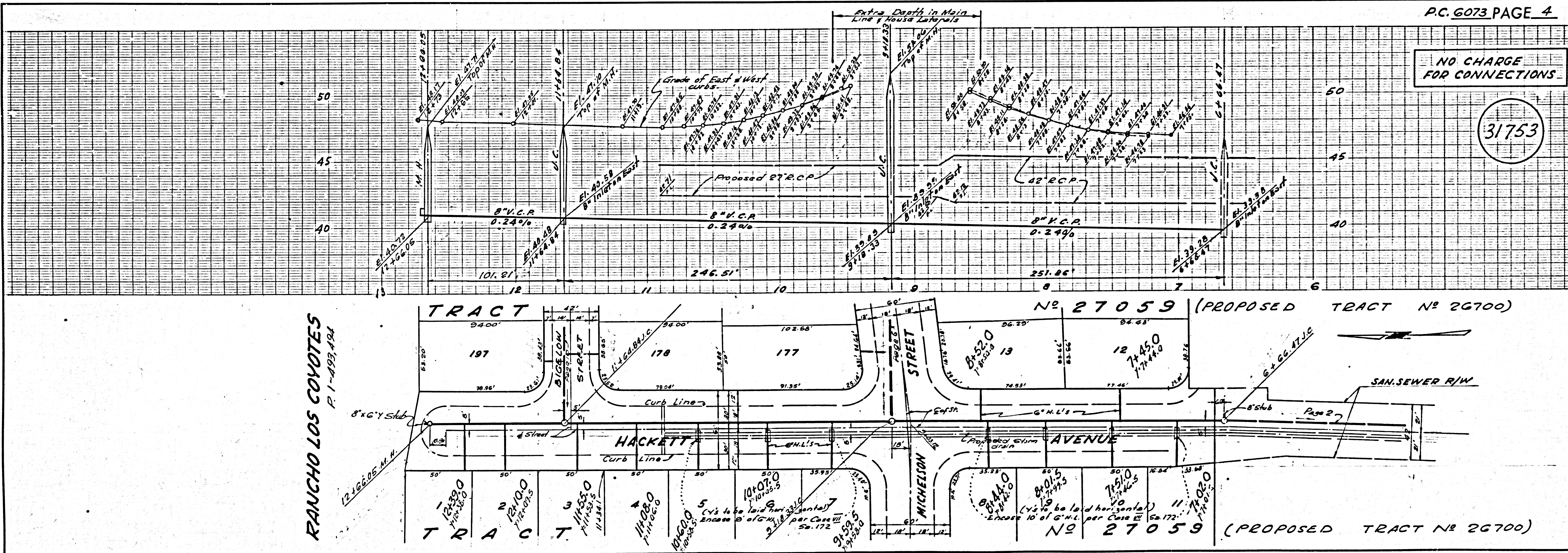
NO CHARGE FOR CONNECTIONS

31752



NO CHARGE FOR CONNECTIONS

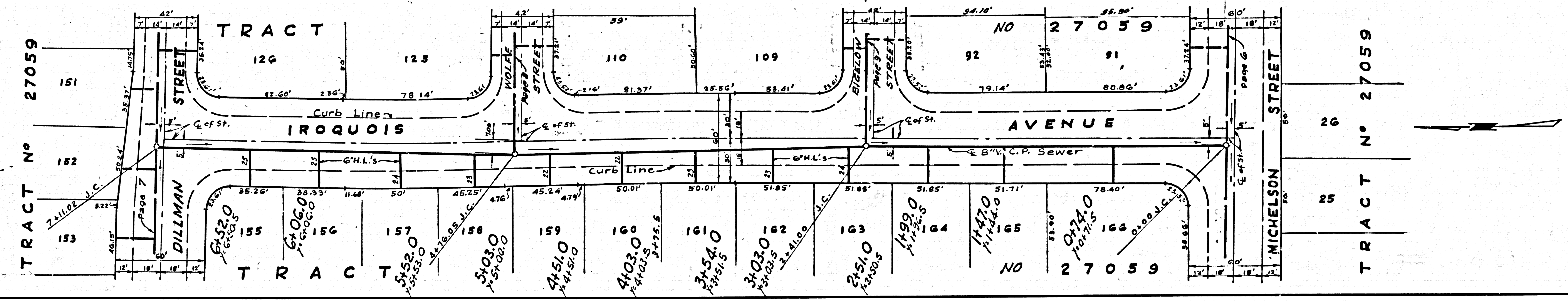
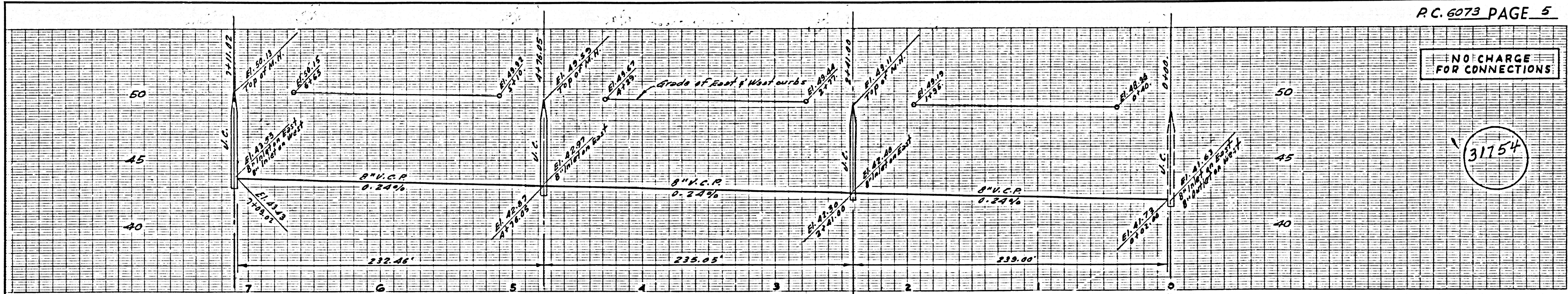
31753





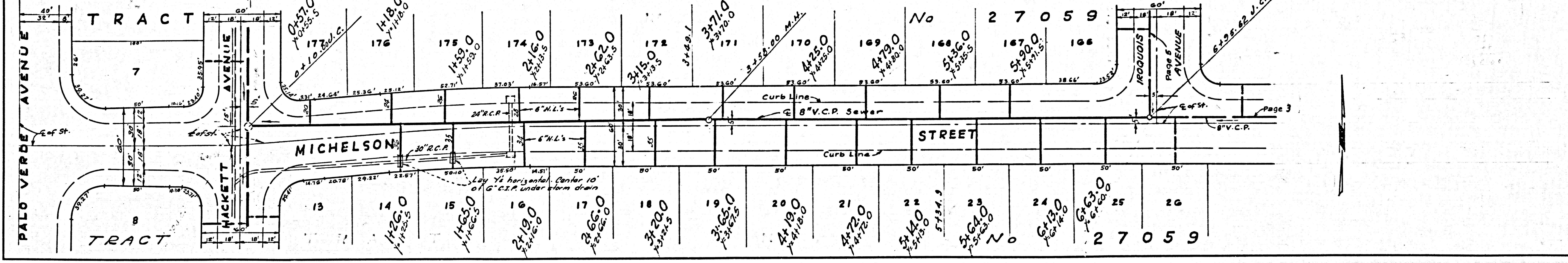
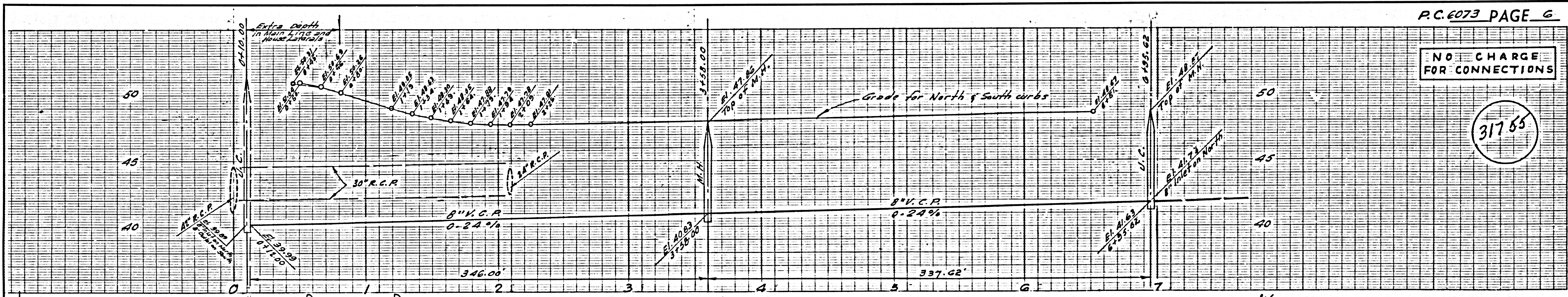
NO CHARGE FOR CONNECTIONS

31754



NO CHARGE FOR CONNECTIONS

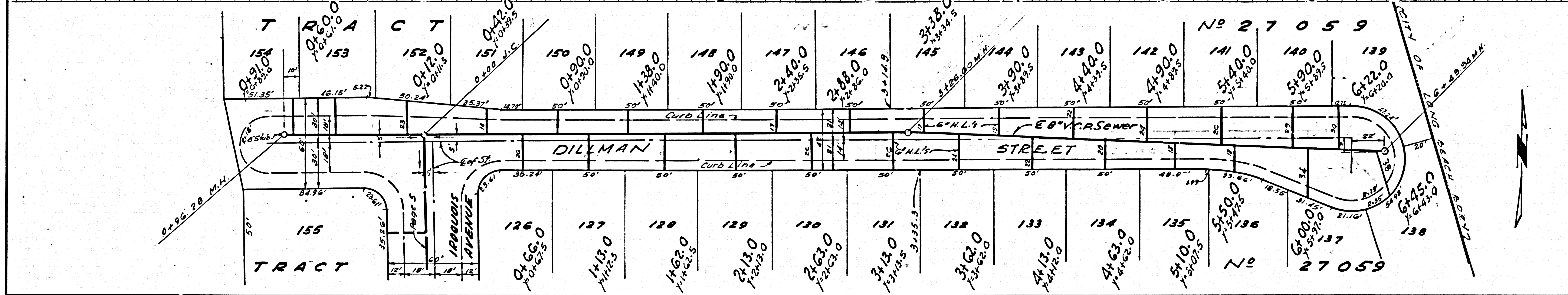
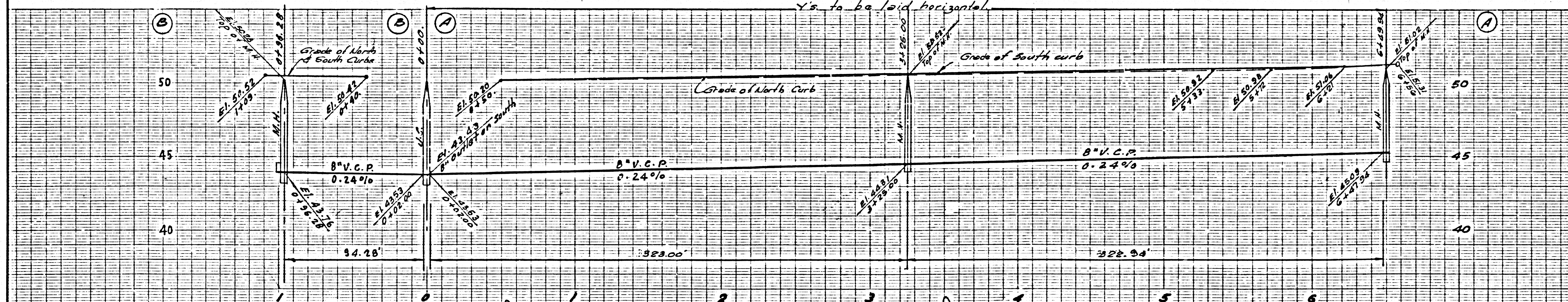
31755





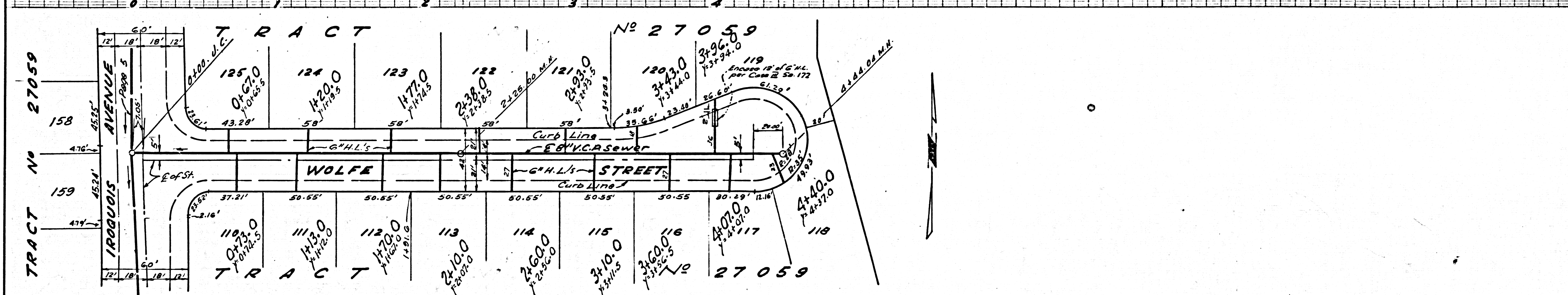
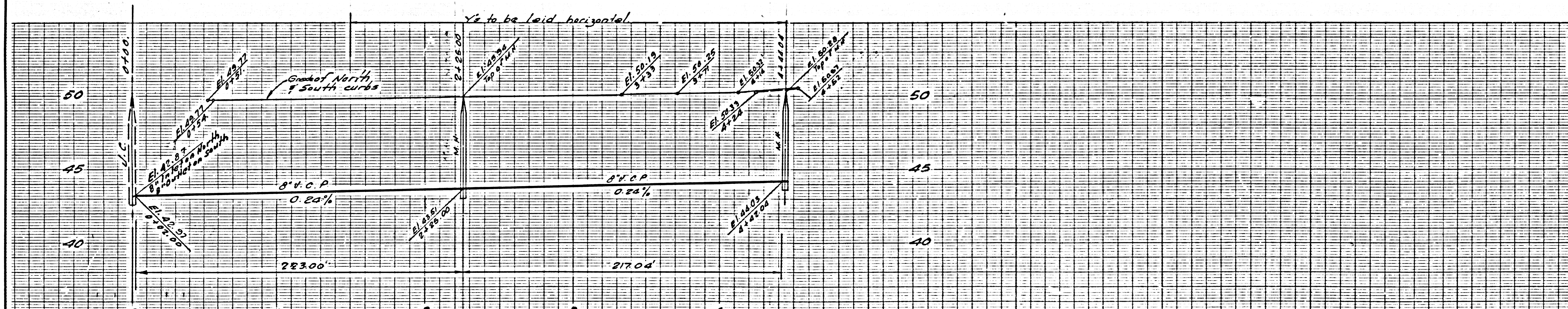
NO CHARGE FOR CONNECTIONS.

31756



NO CHARGE FOR CONNECTIONS.

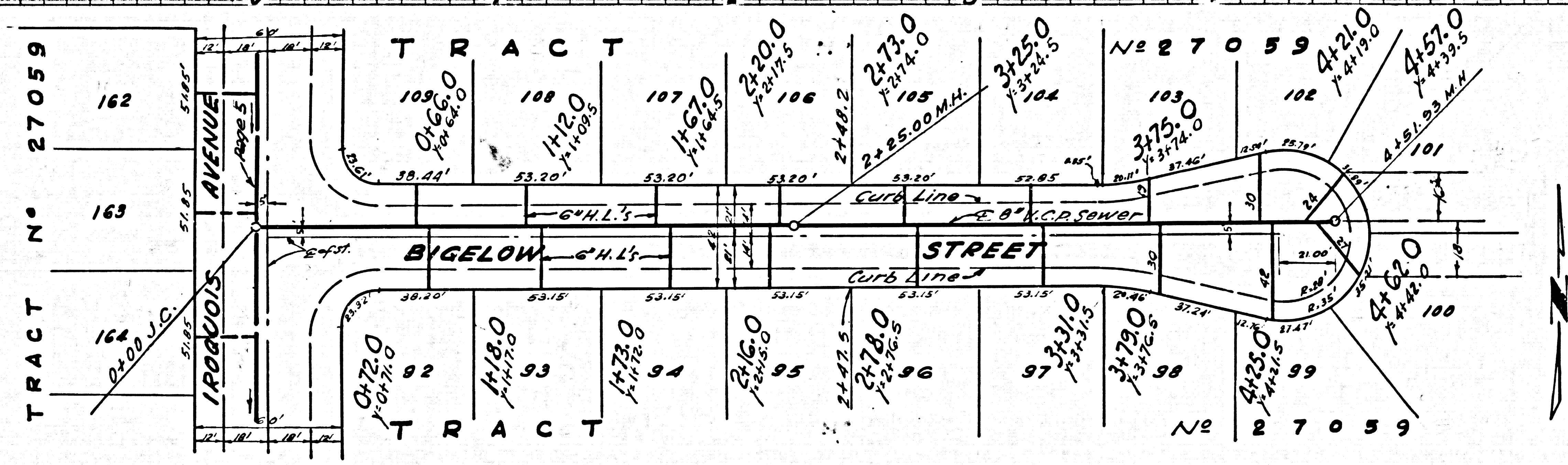
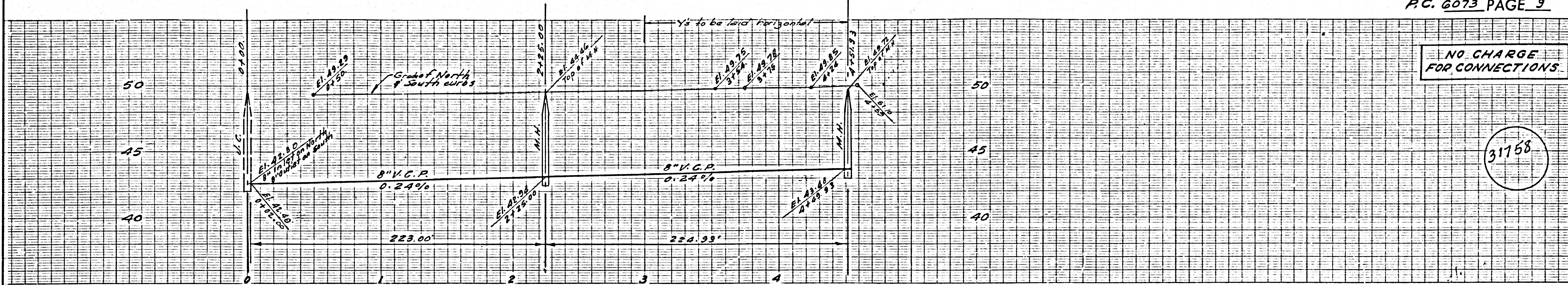
31757





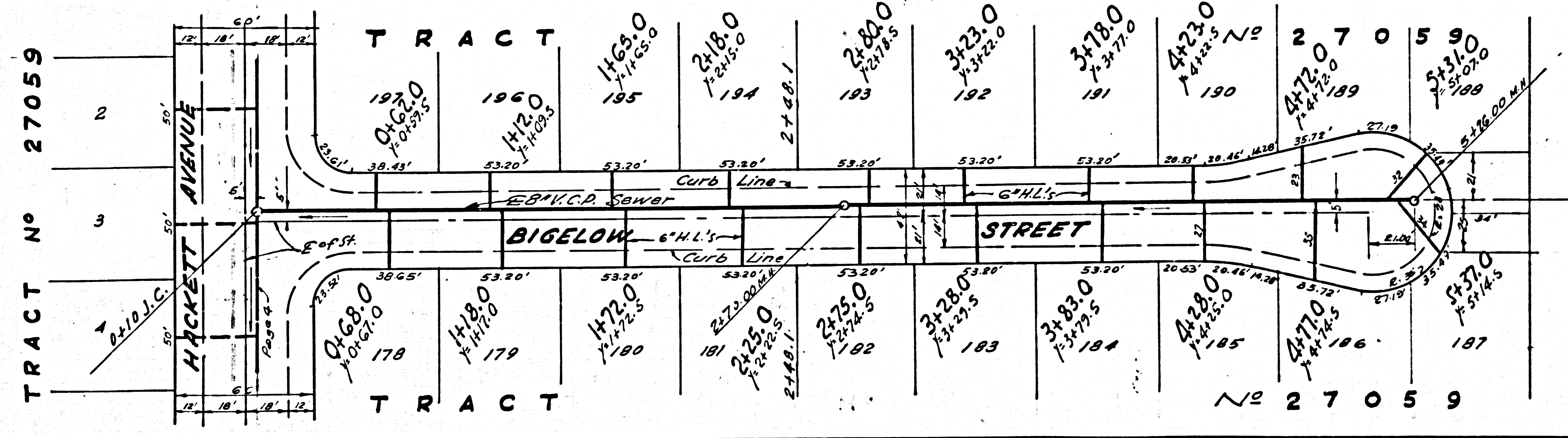
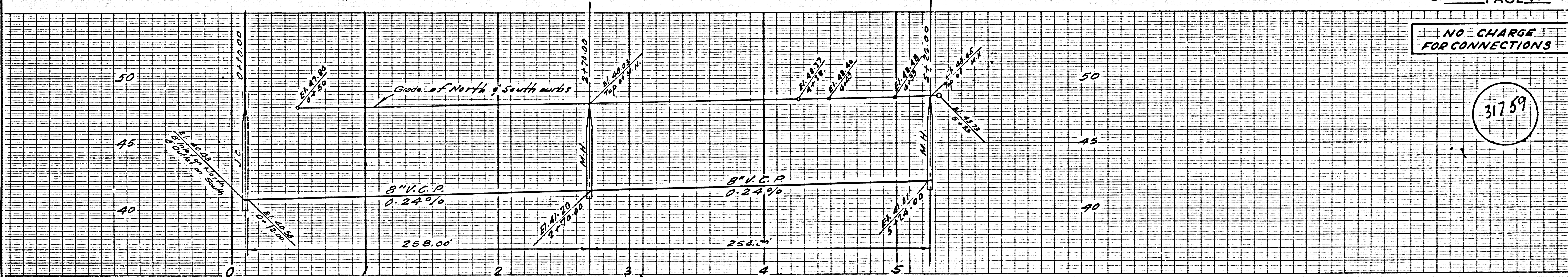
NO CHARGE FOR CONNECTIONS.

31758



NO CHARGE FOR CONNECTIONS.

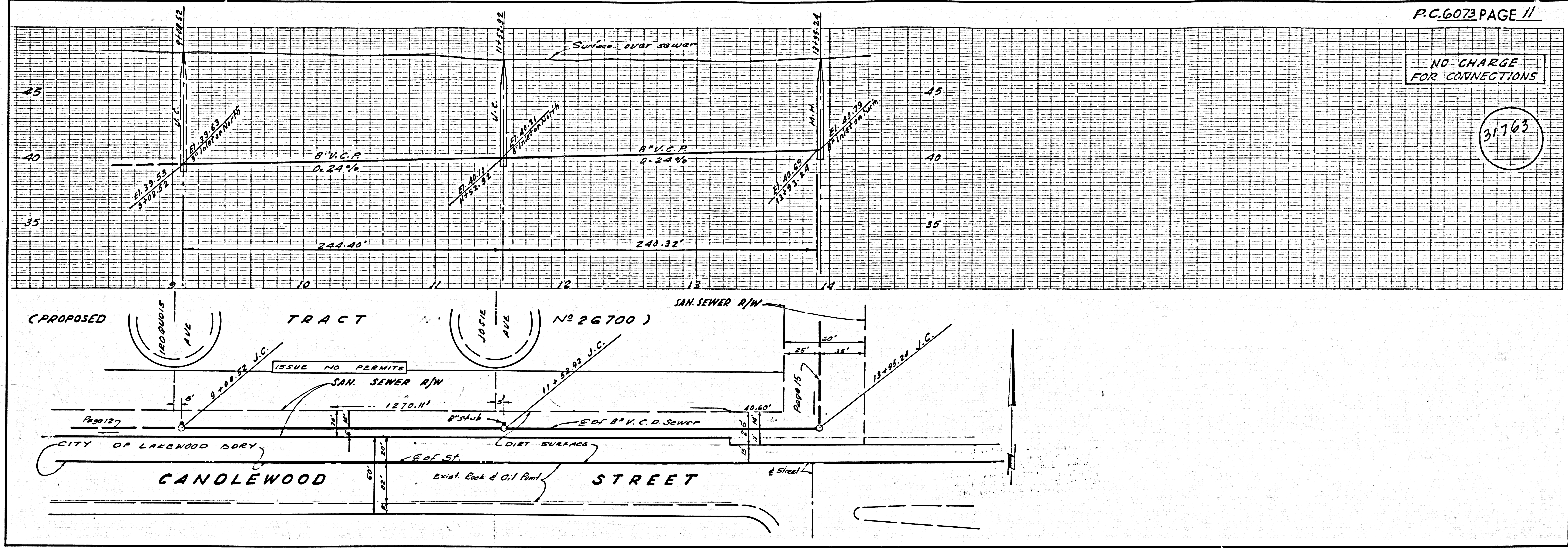
31759





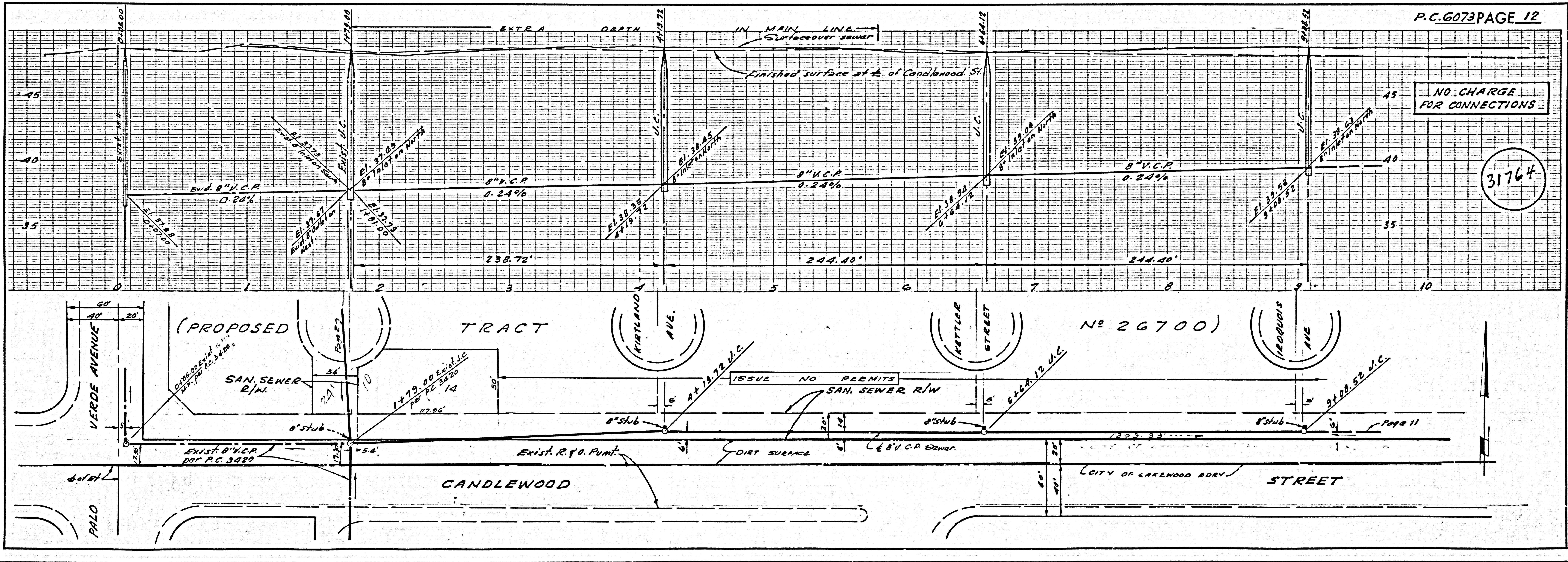
NO CHARGE FOR CONNECTIONS

31763

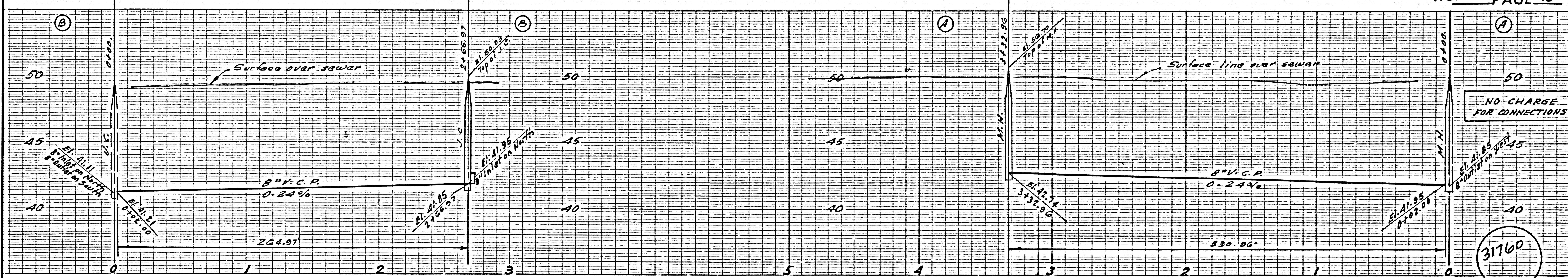


NO CHARGE FOR CONNECTIONS

31764

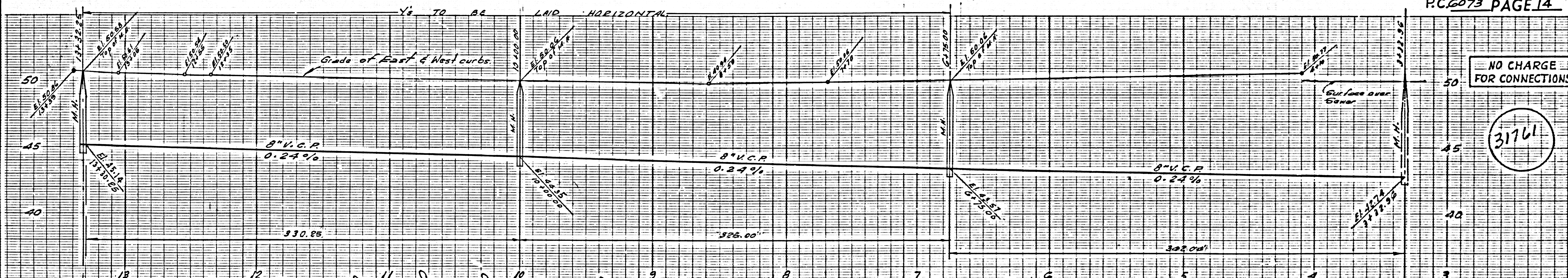
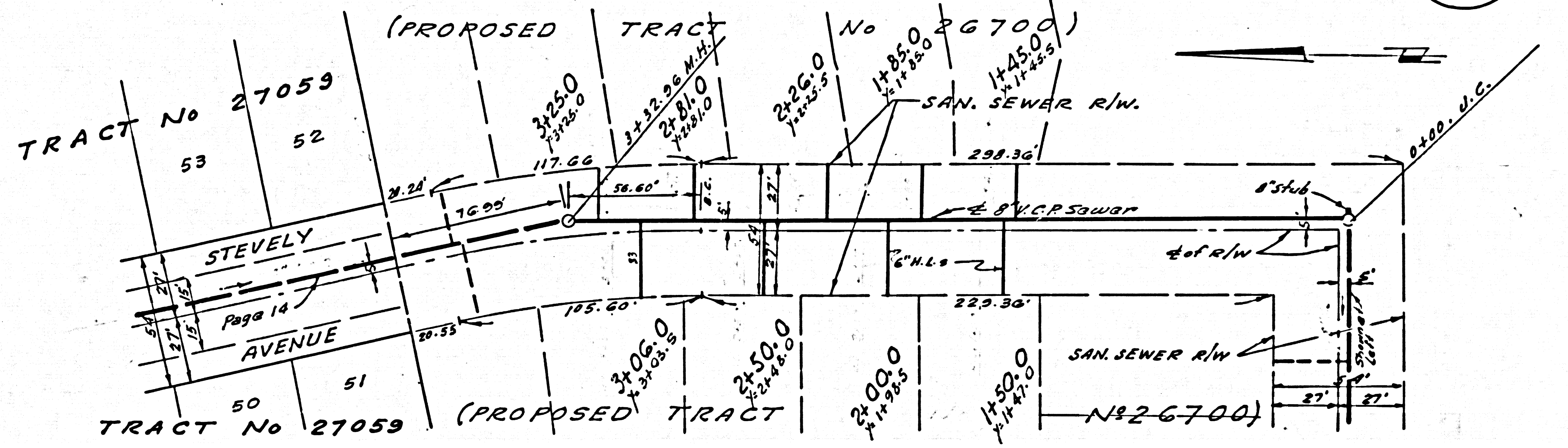
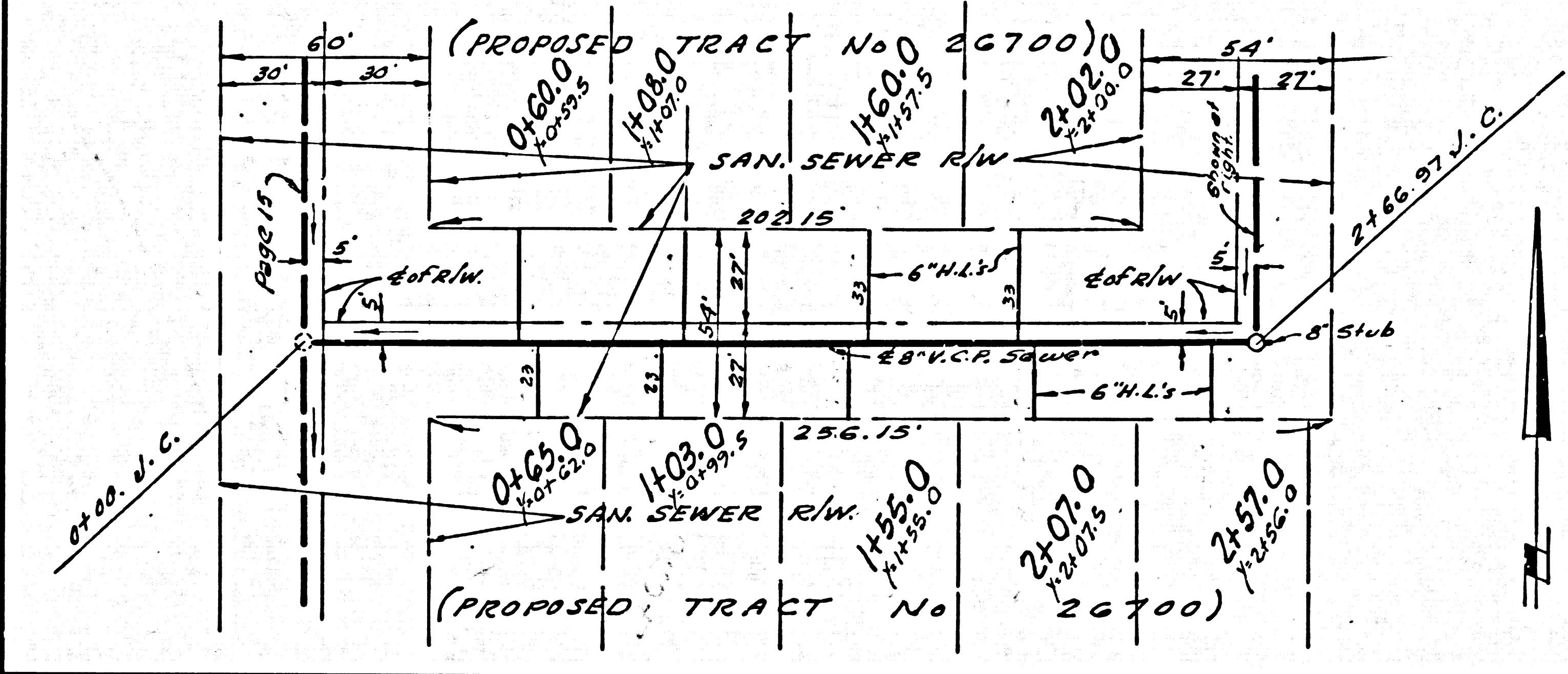






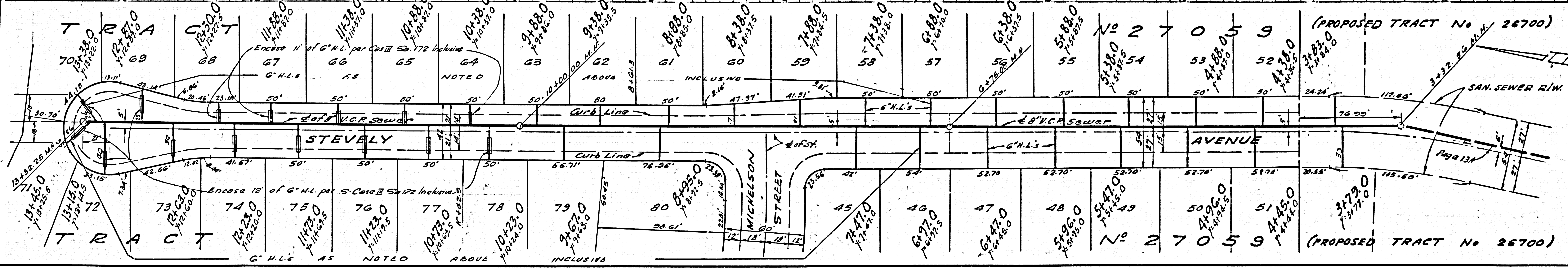
NO CHARGE FOR CONNECTIONS

31760

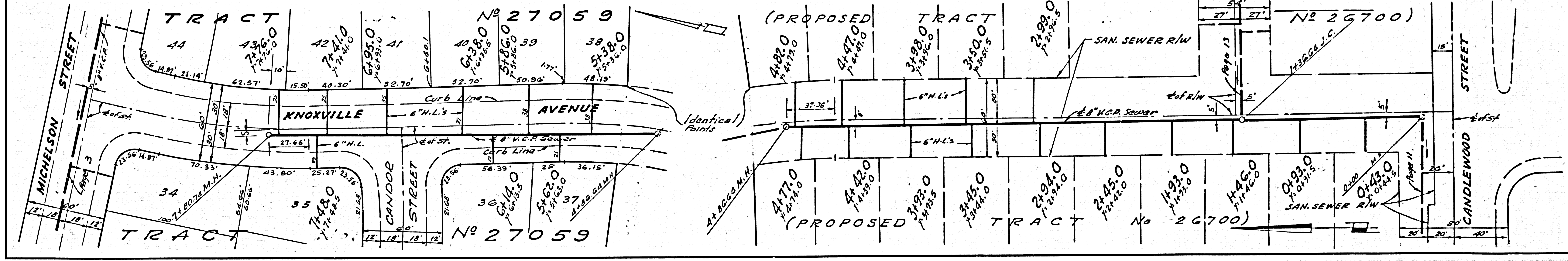
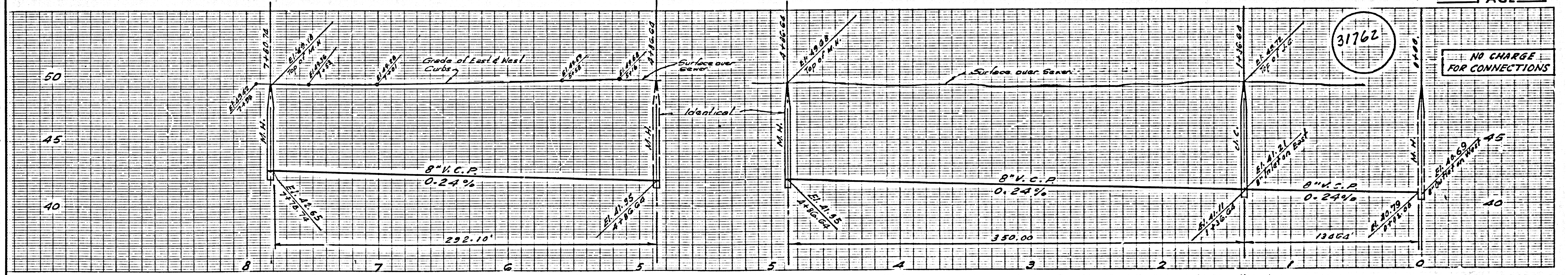
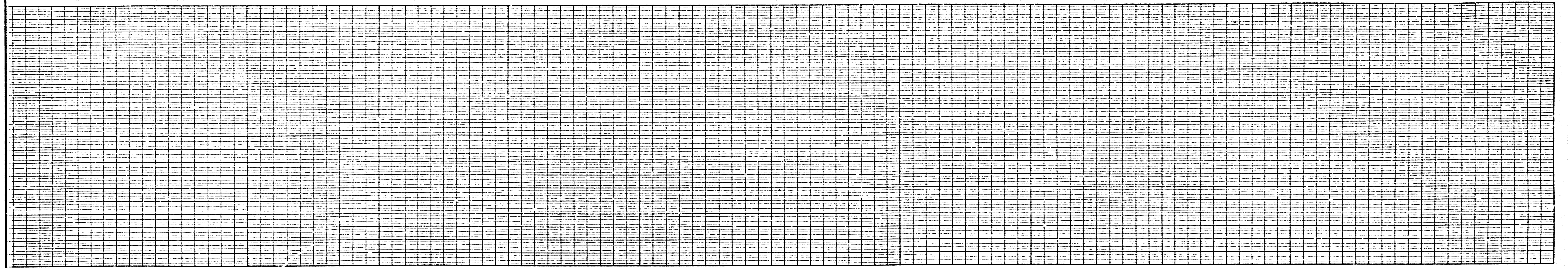


NO CHARGE FOR CONNECTIONS

31761







H.R. LIND  
5-2-12