

BENCH MARK:  
 N.A. S.G. 1623, Elev. 403.311  
 Co. Sur. Mon. in wall 14" down at or  
 near Int. of Hacienda Blvd. & Halliburton  
 (Formerly Puente Rd.) Otterheim 1955

PUENTE BLDG. DIST. NO. 2

PROFILE ALIGNMENT AND GRADE OF P.C. 6079  
 SANITARY SEWERS PAGE 1  
 TO BE CONSTRUCTED IN J.N. 0357.22

TRACT N<sup>o</sup> 26505  
 PRIVATE CONTRACT NO. 6079

W.S. 38

4 SHEETS; 8 PAGES  
 SCALE: VERT. 1"=8' DECEMBER 6, 1961  
 HORIZ. 1"=40'

PREPARED IN THE OFFICES OF  
**AMCO ENGINEERS**  
 3344 W. OLYMPIC BLVD. B.H.  
 BY: J. George Araujo 12-6-61  
 J. GEORGE ARAUJO REG. C. E. NO. 11467

FOR LEGEND SEE PLAN NO. S-A-64

NOTE:  
 GRADES TO WHICH THIS IMPROVEMENT IS TO BE CONSTRUCTED ARE SHOWN ON PLANS AND PROFILES. GRADE POINTS FOR TOP OF CURBS, CENTER LINE OF STREETS, OR CENTER LINE OF ALLEYS ARE SHOWN BY CIRCLES ON PROFILES. AT ALL POINTS BETWEEN DESIGNATED POINTS THE GRADE SHALL BE ESTABLISHED SO AS TO CONFORM TO A STRAIGHT LINE DRAWN BETWEEN SAID DESIGNATED POINTS.  
 ELEVATIONS ARE IN FEET ABOVE U.S.C. & G.S. SEA LEVEL DATUM OF 1929.  
 THIS DRAWING AND THE DATA HEREON ARE HEREBY MADE A PART OF THE SPECIFICATIONS.  
 WORK SHALL BE CONSTRUCTED ACCORDING TO SPECIFICATIONS ON FILE IN THE OFFICE OF THE COUNTY ENGINEER AND SHALL BE PROSECUTED ONLY IN THE PRESENCE OF THE COUNTY ENGINEER.  
 BEFORE WORK CAN BE STARTED, THE CONTRACTOR MUST OBTAIN A PERMIT TO EXCAVATE IN COUNTY STREETS FROM THE L.A. COUNTY ROAD DEPT., DISTRICT OFFICE NO. 1, AND PAY A FEE TO THE COUNTY ENGINEER ROOM NO. 10, L.A. COUNTY Bldg., Bldg. 208 W. 4<sup>th</sup> ST., L.A. SUFFICIENT TO COVER THE COST OF CONSTRUCTION INSPECTION AND RECORD PLANS.  
 APPROVAL OF THIS PLAN BY THE COUNTY OF LOS ANGELES DOES NOT CONSTITUTE A REPRESENTATION AS TO THE ACCURACY OF THE LOCATION OF OR THE EXISTENCE OR NON-EXISTENCE OF ANY UNDERGROUND UTILITY PIPE, OR STRUCTURE WITHIN THE LIMITS OF THIS PROJECT. THIS NOTE APPLIES TO ALL PAGES.  
 IF WORK IS TO BE DONE IN A STATE HIGHWAY, A PERMIT MUST BE OBTAINED FROM THE STATE OF CALIFORNIA, DIVISION OF HIGHWAYS, 128 SOUTH SPRING STREET.

COUNTY OF LOS ANGELES, CALIFORNIA

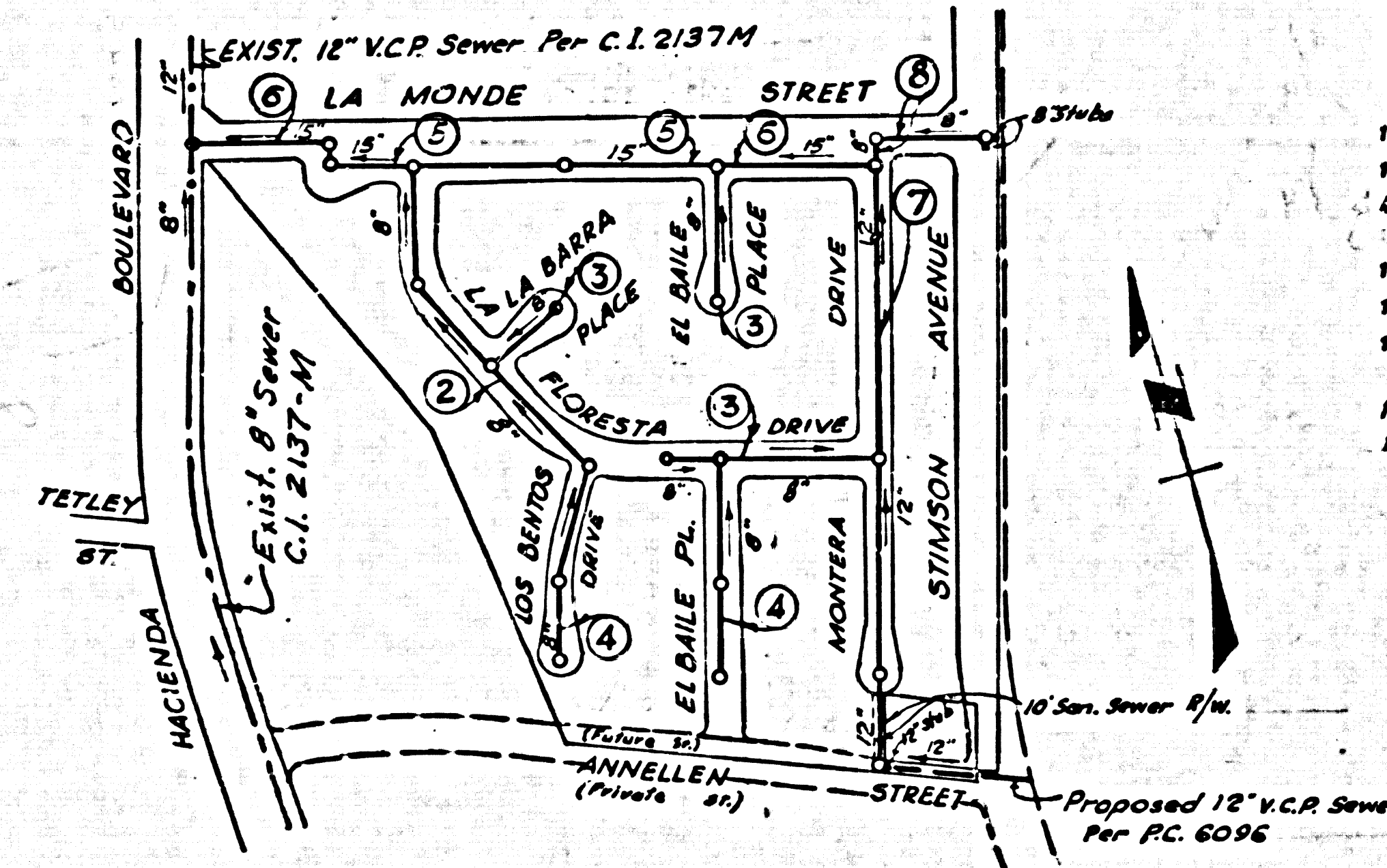
APPROVED, JOHN A. LAMBIE, COUNTY ENGINEER APPROVED, J.D. PARKINER, CHIEF ENGINEER

BY: J. George Araujo ASST. SANITATION ENGINEER  
J. H. Ostrander OFFICE ENGINEER

CHECKED BY: W. C. Duda 2-5-62  
 OFFICE OF COUNTY ENGINEER, REG. C. E. NO. 3404

SUBMITTED W. C. Duda 2-2-62  
 SAN DIMAS - REGIONAL ENGINEER

NO CONNECTIONS FOR THE DISPOSAL OF INDUSTRIAL WASTES SHALL BE MADE TO SEWERS SHOWN ON THESE DRAWINGS WITHOUT WRITTEN PERMISSION FROM THE CHIEF ENGINEER AND GENERAL MANAGER OF THE COUNTY SANITATION DISTRICTS.

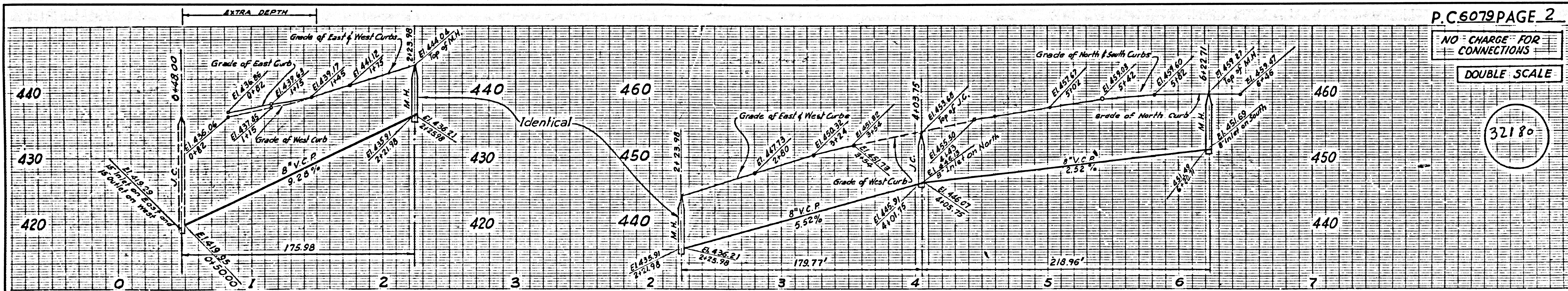


INDEX MAP  
 SCALE 1"=300'  
 TRACT N<sup>o</sup> 26505  
 P.C. 6079

DOUBLE SCALE  
 VERTICALLY

COLLECT CHARGES AS INDICATED  
 7, 77, 60, 2-2-62

32179

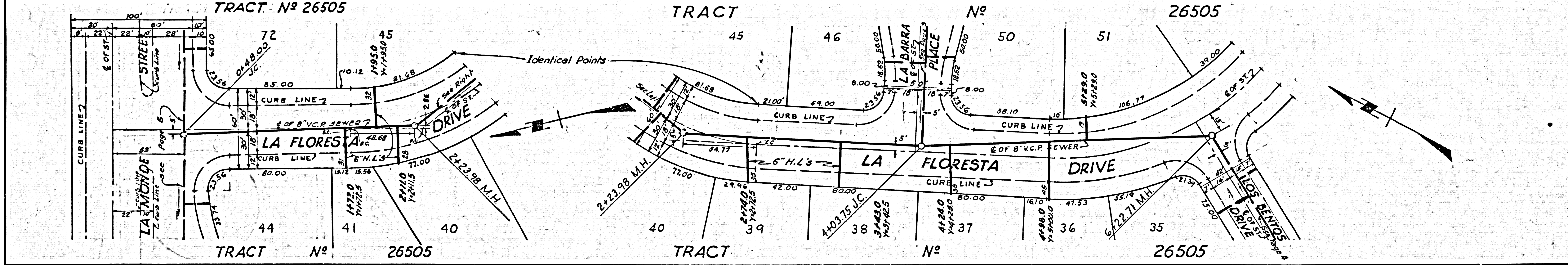


P.C. 6079 PAGE 2

NO CHARGE FOR CONNECTIONS

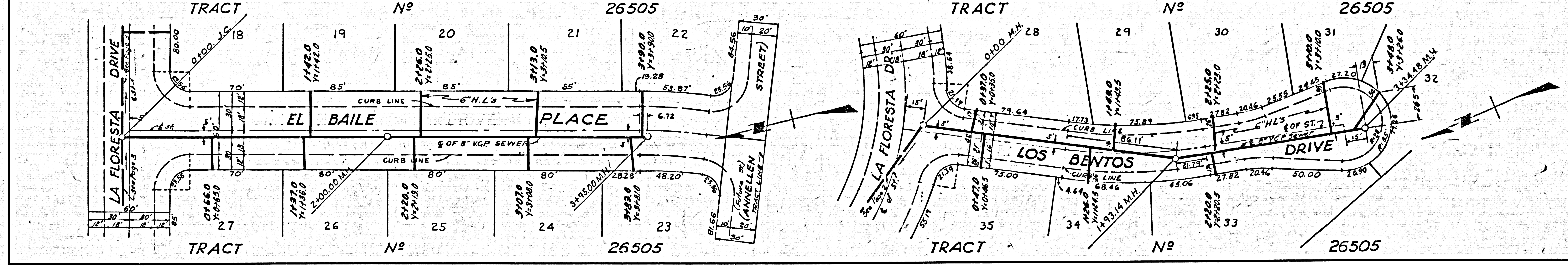
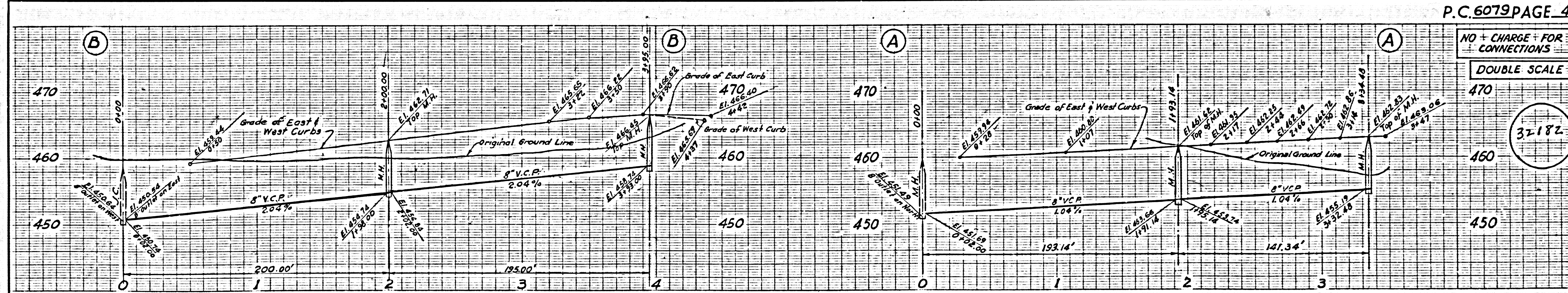
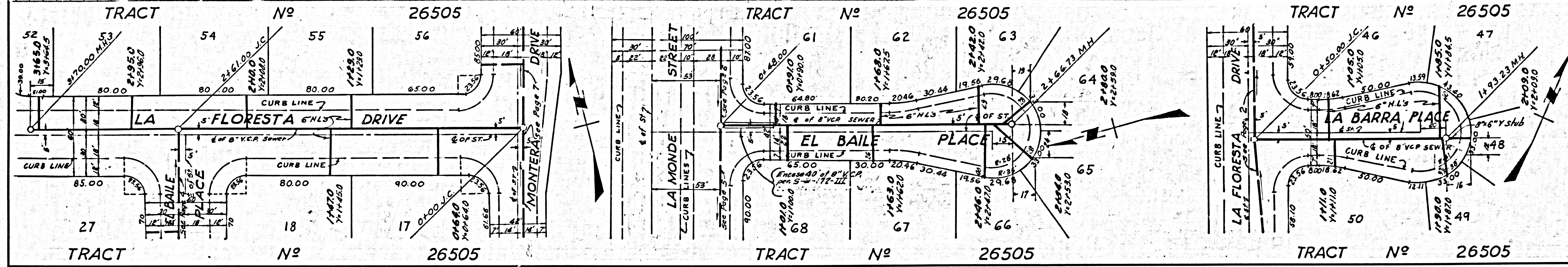
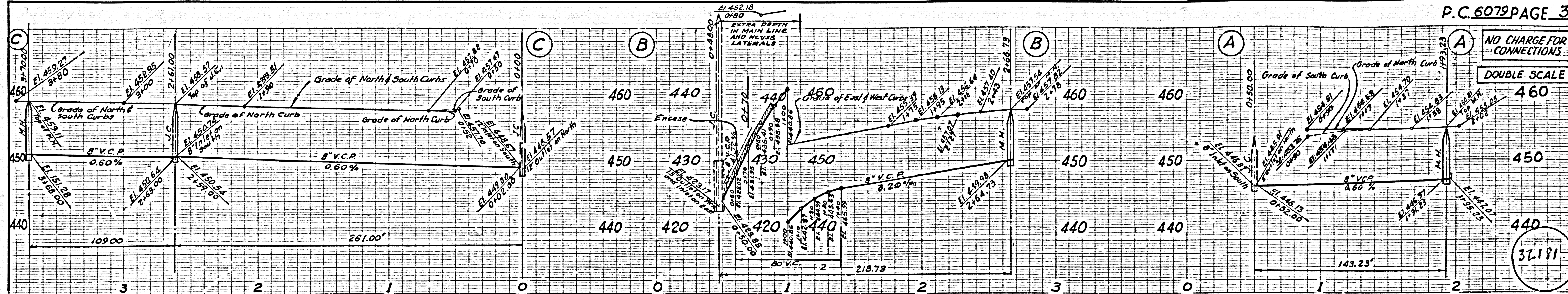
DOUBLE SCALE

32180



1 B.C. 6079

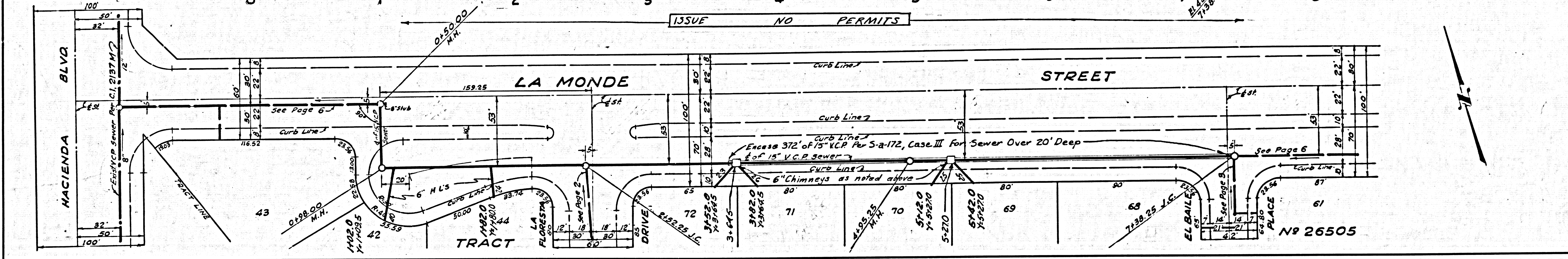
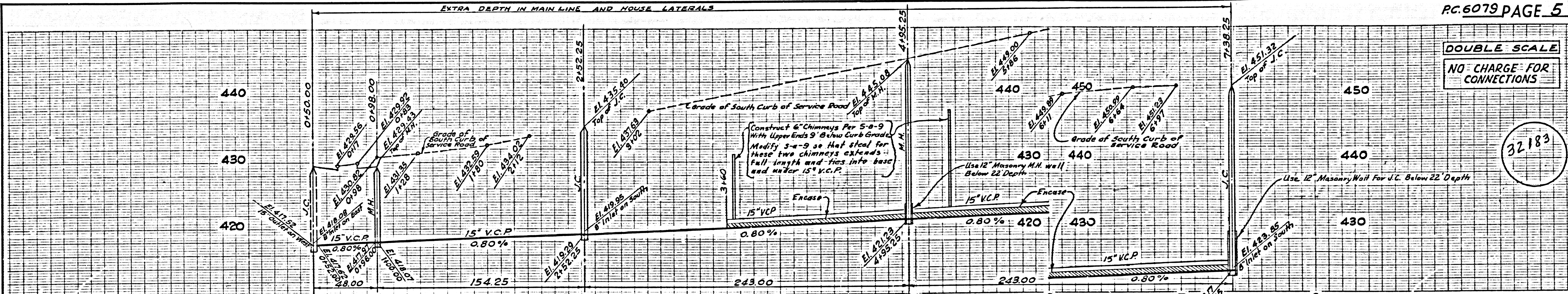
1 B.C. 1 - No. 5202



DOUBLE SCALE

NO CHARGE FOR CONNECTIONS

32183



DOUBLE SCALE

NO CHARGE FOR CONNECTIONS EXCEPT AS NOTED

32184

