

**SAN DIMAS BLDG. DIST. NO. 10**

PROFILE ALIGNMENT AND GRADE OF **P.C. 6081**  
**SANITARY SEWERS** PAGE 1  
 TO BE CONSTRUCTED IN JN 0357.24

**SANITARY SEWER RIGHTS OF WAY**  
**PRIVATE CONTRACT NO. 6081**

W.S. 39  
 2 SHEETS; 4 PAGES  
 SCALE: VERT. 1" = 4' NOVEMBER, 1961.  
 PREPARED BY THE OFFICES OF  
**QUINTON ENGINEERS LTD.**  
 LOS ANGELES, CALIFORNIA  
 REG. C. E. NO. 12207

32269

- NOTES
1. PROVIDE STAKES ON THE PROPERTY LINE OR PROPERTY LINES PRODUCED AT RIGHT ANGLES TO THE SEWER LINE AT THE CENTER LINE OF EACH MANHOLE.
  2. NO REPRESENTATIVE OF THE COUNTY ENGINEER WILL SURVEY OR LAY OUT ANY PORTION OF THE WORK.
  3. ALL CONSTRUCTION SHALL BE ACCORDING TO THE SPECIFICATIONS AND STANDARDS SET FORTH IN THE STANDARD SPECIFICATIONS FOR HIGHWAYS AND BRIDGES, LATEST EDITION, AS APPLICABLE.
  4. ALL CONSTRUCTION SHALL BE ACCORDING TO THE SPECIFICATIONS AND STANDARDS SET FORTH IN THE STANDARD SPECIFICATIONS FOR SANITARY SEWERS, LATEST EDITION, AS APPLICABLE.
  5. NO REVISIONS SHALL BE MADE IN THESE PLANS WITHOUT THE APPROVAL OF THE COUNTY ENGINEER.
  6. USE STANDARD MANHOLE FRAMES AND COVERS, S-0-104, PRECAST CONCRETE MANHOLES PER S-0-135 OR S-0-173 MAY BE USED AS AN ALTERNATE IN LOCATIONS APPROVED BY THE COUNTY ENGINEER.
  7. USE EXTRA STRENGTH PIPE SHEET-PIPING ALL PIPE STANDARD DEPTH EXCEPT AS NOTED.
  8. USE "WEDGE LOCK" OR "SPEED SEAL" FOR ALL V.C.P. JOINTS PER SPECS. SECS. 36 & 40.
  9. REINFORCE ALL TRENCH WITHIN PAVED AREA TO MEET L.A. COUNTY ROAD DEPT. OR CALIF. STATE HIGHWAY REQUIREMENTS IN ACCORDANCE WITH PERMITS.
  10. ENCASE FOUR FEET OF SEWER AT POINTS OF INTERFERENCE WITH POLES, CASE III, S-0-172.
  11. MANHOLES SHALL BE BRICK SEWER STRUCTURES S-0-104, PRECAST CONCRETE MANHOLES PER S-0-135 OR S-0-173 MAY BE USED AS AN ALTERNATE IN LOCATIONS APPROVED BY THE COUNTY ENGINEER.
  12. FOR ALLOWABLE LEAKAGE TEST USE FORMULA NO. 1, SPEC'S., SEC. 54.
  13. MANHOLE TOPS IN UNIMPROVED RIGHTS-OF-WAY TO BE SIX INCHES ABOVE FINISHED GRADE.
  14. THE CONTRACTOR SHALL NOTIFY THE CONSTRUCTION DIVISION BY TELEPHONE, SA 9-4947, EXT. 81931 AT LEAST TWENTY-FOUR HOURS BEFORE STARTING ANY WORK UNDER THIS CONTRACT.
  15. STANDARD SPECIFICATIONS DATED OCTOBER 25, 1961 APPLY IN THE CONSTRUCTION OF THIS PROJECT.

NOTE: GRADES TO WHICH THIS IMPROVEMENT IS TO BE CONSTRUCTED ARE SHOWN ON PLANS AND PROFILES. GRADE POINTS FOR TOP OF CURB, CENTER LINE OF STREETS, OR CENTER LINE OF ALLEYS ARE SHOWN BY CIRCLES ON PROFILES AT ALL POINTS BETWEEN DESIGNATED POINTS THE GRADE SHALL BE ESTABLISHED SO AS TO CONFORM TO A STRAIGHT LINE DRAWN BETWEEN SAID DESIGNATED POINTS.

ELEVATIONS ARE IN FEET ABOVE U.S.C. & G.S. MEAN LEVEL DATUM OF 1929.

THIS DRAWING AND THE DATA HEREON ARE HEREBY MADE A PART OF THE SPECIFICATIONS.

BEFORE WORK CAN BE STARTED, THE CONTRACTOR MUST OBTAIN A PERMIT TO EXCAVATE IN COUNTY STREETS FROM THE COUNTY ENGINEER, LOS ANGELES, CALIFORNIA, AND PAY A FEE TO THE COUNTY ENGINEER FROM 310 COUNTY ENGINEERS BUILDING (Rm. 2) 2ND ST. L.A. SUFFICIENT TO COVER THE COST OF CONSTRUCTION INSPECTOR AND RECORD PLANS.

APPROVAL OF THIS PLAN BY THE COUNTY OF LOS ANGELES DOES NOT CONSTITUTE A REPRESENTATION AS TO THE ACCURACY OF THE LOCATION OR OF THE EXISTENCE OR NON-EXISTENCE OF ANY UNDERGROUND UTILITY PIPE, OR STRUCTURE WITHIN THE LIMITS OF THIS PROJECT THE NOTE APPLIES TO ALL PAGES.

IF WORK IS TO BE DONE IN A STATE HIGHWAY, A PERMIT MUST BE OBTAINED FROM THE STATE OF CALIFORNIA, DIVISION OF HIGHWAYS, 120 SOUTH SPRING STREET.

COUNTY OF LOS ANGELES, CALIFORNIA

APPROVED, JOHN A. LAMBIE, COUNTY ENGINEER APPROVED, J.D. PARKHURST, CHIEF ENGINEER  
 CO. SAN. DIST. NO. 10

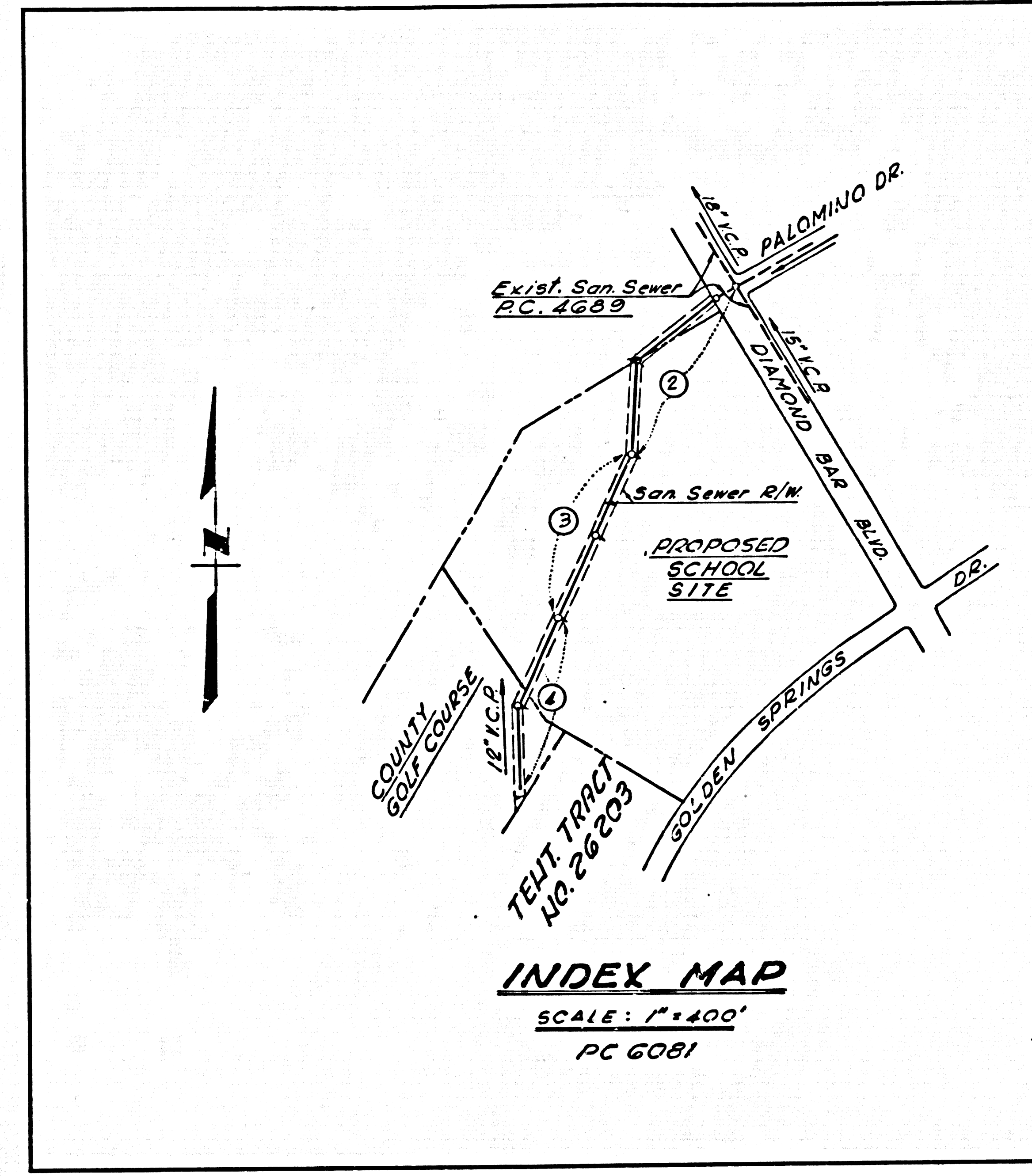
BY: *[Signature]* ASST. SANITATION ENGINEER BY: *[Signature]* OFFICE ENGINEER  
 CHECKED BY: *[Signature]*  
 OFFICE OF COUNTY ENGINEER, REG. C. E. NO. 2406  
 SUBMITTED *[Signature]* 1-21-62  
 SAN DIMAS REGIONAL ENGINEER

**NO CHARGE FOR CONNECTIONS**  
 7/20/62 *[Signature]* 1-22-62

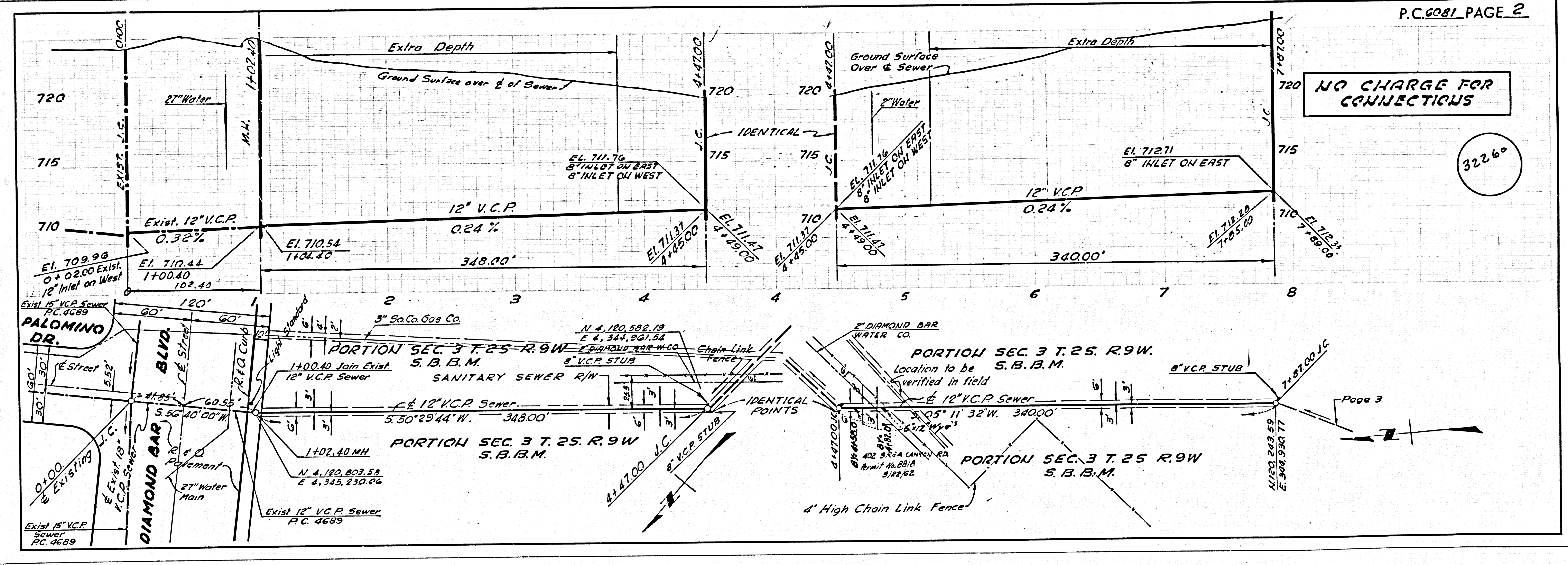
REVISION:  
 Manhole at Station 20+97.00 Deleted and Main Line Plugged.  
 Approved *[Signature]* SAN DIMAS REGIONAL ENGINEER

**BENCH MARK**  
 A Standard County Surveyor Monument, set in concrete 10" below the surface marked "B.M. 11-91 1952 R.E. 63" and located 8.3' W of the west edge of Pomona Blvd. and 8.3' E of the east edge of Valley Blvd. in a well protected by a cast iron cover marked "County Surveyors Monument F.B. 1376-82 1959 Adjusted Elev. 688.274"

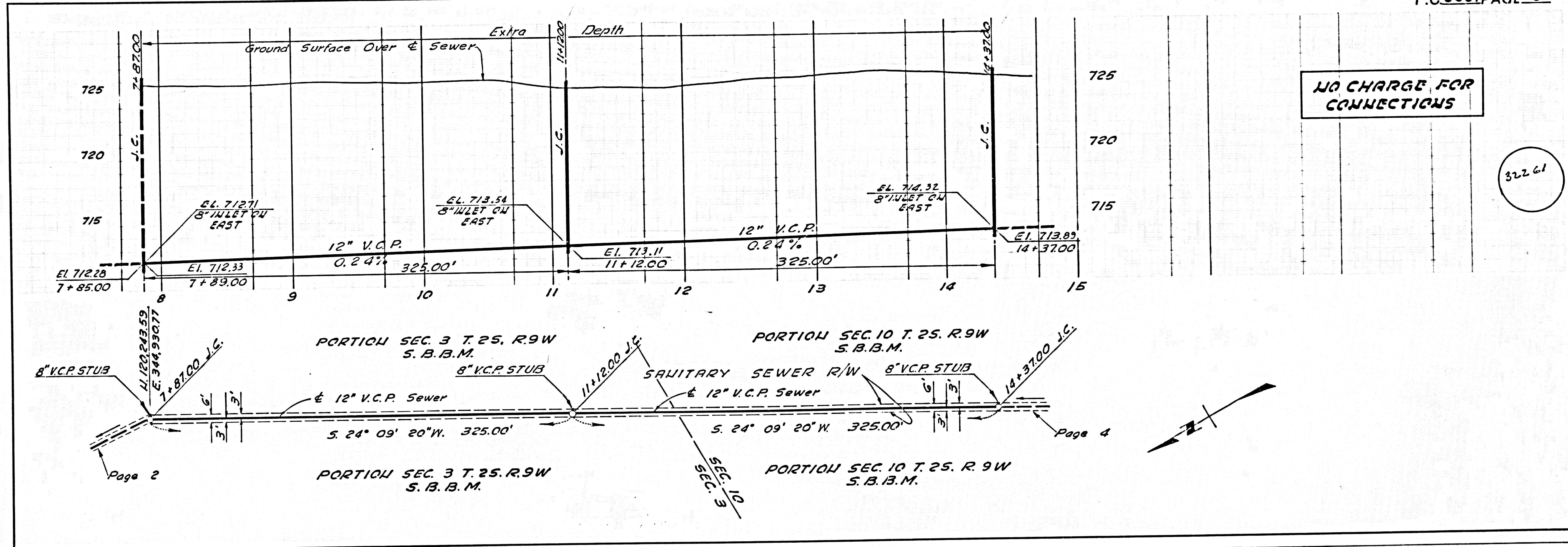
NO CONNECTIONS FOR THE DISPOSAL OF INDUSTRIAL WASTES SHALL BE MADE TO SEWERS SHOWN ON THESE DRAWINGS WITHOUT WRITTEN PERMISSION FROM THE CHIEF ENGINEER AND GENERAL MANAGER OF THE COUNTY SANITATION DISTRICTS.



**BASIS OF BEARING**  
 The Bearing of N 33° 20' 00" W As Shown On The Center Line Of Diamond Bar Boulevard Per Tract No. 24724 As Recorded In Book 647 Pages 7, 8 And 9 Of Maps, Was Used As A Basis Of Bearings For This Project.

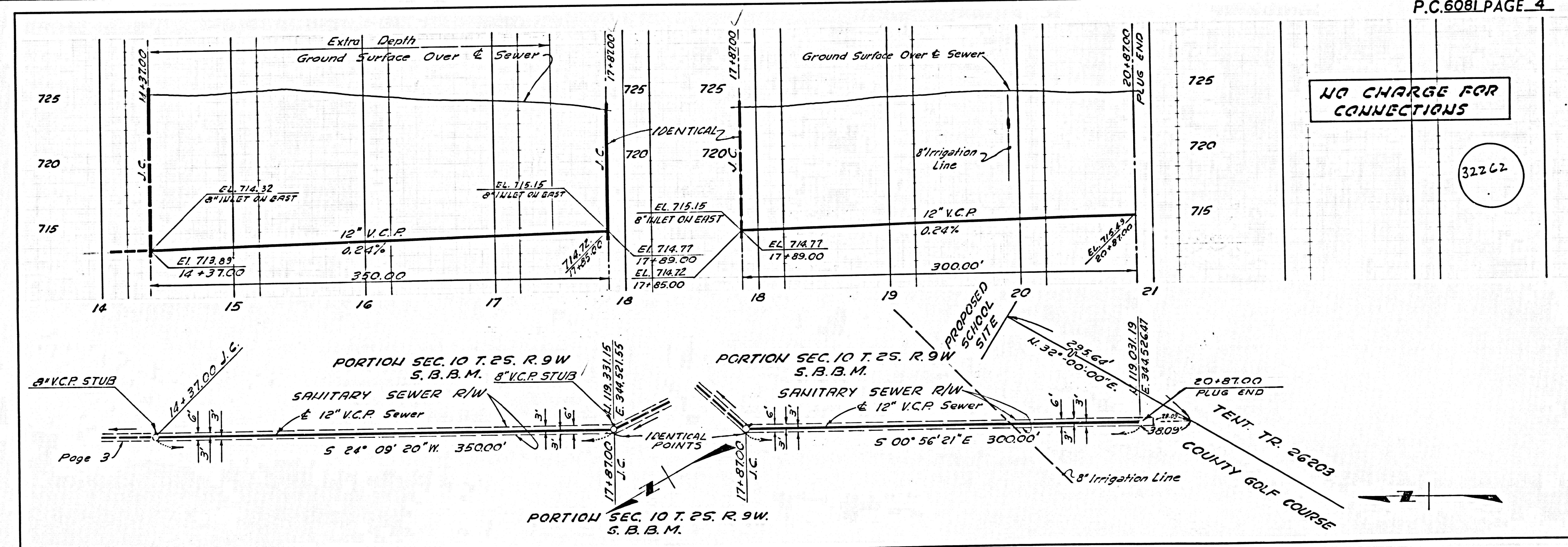


P.C. 6081 PAGE 2



NO CHARGE FOR CONNECTIONS

32261



NO CHARGE FOR CONNECTIONS

32262

AS PER L.A. COUNTY SEWER SHEET NO. 2 20. CAL. BLUEPRINT CO.