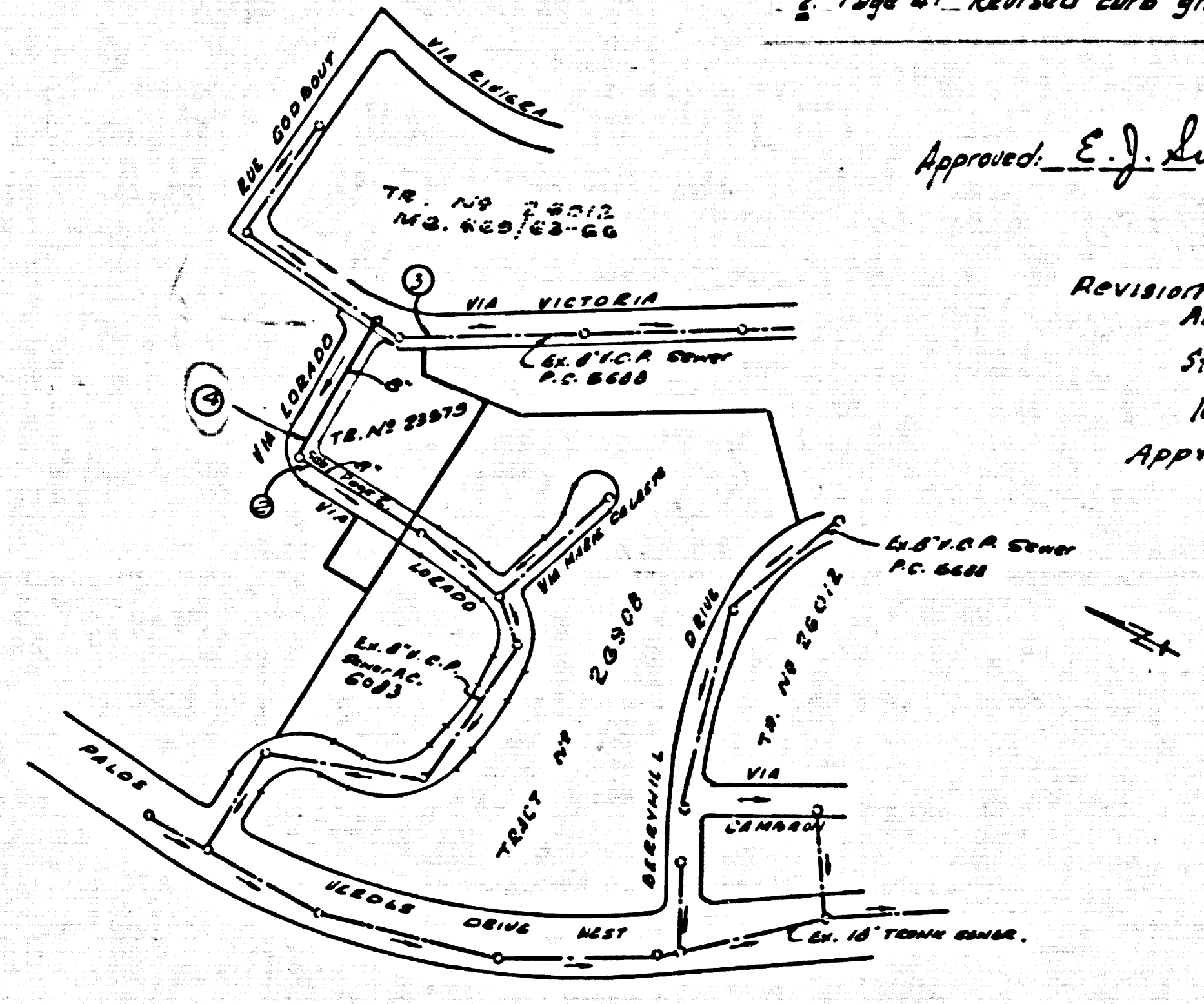


DOUBLE SCALE  
LOMITA BLDG. DIST. NO. 72

PROFILE ALIGNMENT AND GRADE OF P.C. 6084  
SANITARY SEWERS PAGE 1  
TO BE CONSTRUCTED IN J.N. 0357.26  
TRACT No 23579

Revision: 7-18-62.  
1. Page 2: Revised of lowered grades on Street of sewer in Via Lorado.  
2. Page 4: Revised curb grades only on Via Lorado.



Approved: E.J. Smith Date: 7-19-62  
Revising: Added H.L. Sta. 1110.0 page 2 & Sta. 0+29.0 page 4. Moved H.L. for lot 1 around corner from page 2 to page 4  
Approved: E.J. Smith Date 9-20-62

INDEX MAP  
Scale: 1"=50'  
TRACT No 23579  
P.C. 6084

BENCH MARK  
B.M. 54-21  
PALOS VERDES DRIVE NEAR N. POINT VICTORIA LIGHT HOUSE 20' N & DRIVE AT A CLUSTER OF 3 EUCALYPTUS TREES # STD. 65 MONUMENT STAMPED B.M. 54-21 125.0 H.E. 63' SET NADEN WITH SURFACE MARK LINES 1955  
N.I.V. 247.621

NO CHARGE FOR CONNECTIONS.  
L. Curtis 9-23-62

- NOTES:
1. PROVIDE STAKES ON THE PROPERTY LINE OR PROPERTY LINES PRODUCED AT RIGHT ANGLES TO THE SEWER LINE AT THE CENTER LINE OF EACH MANHOLE.
  2. NO REPRESENTATIVE OF THE COUNTY ENGINEER WILL SURVEY OR LAY OUT ANY PORTION OF THE WORK.
  3. THE OWNER OR HIS AUTHORIZED REPRESENTATIVE SHALL FURNISH THE COUNTY ENGINEER WITH GRADE SHEETS AND STATIONING FOR ALL HOUSE LATERALS AND Y BRANCHES AND SHALL PROVIDE STAKES FOR THEM AT THEIR PROPER LOCATIONS WITH STATIONING PLAINLY MARKED. ANY CHANGE IN LOCATION SHALL BE REQUESTED IN WRITING BY THE OWNER OR HIS REPRESENTATIVE.
  4. THE PRIVATE ENGINEER SHALL FURNISH THE HOUSE LATERAL DEPTH AT THE PROPERTY LINE BELOW THE TOP OF CURB ELEVATION FOR EACH HOUSE LATERAL ON THE GRADE SHEET.
  5. NO REVISIONS SHALL BE MADE IN THESE PLANS WITHOUT THE APPROVAL OF THE COUNTY ENGINEER.
  6. USE STANDARD MANHOLE FRAMES AND COVERS, 5-117, CLASS 'A' 12" DIA.
  7. USE EXTRA STRENGTH PIPE. ALL PIPE IS STANDARD DEPTH.
  8. USE CEMENT MORTAR OR "WEDGE-LOCK" FOR ALL V.C.P. JOINTS PER SPECS, SECS. 34 & 49.
  9. RESURFACE ALL TRENCH WITHIN PAVED AREA TO MEET L.A. COUNTY ROAD DEPT. OR CALIF. STATE HIGHWAY REQUIREMENTS IN ACCORDANCE WITH PERMITS.
  10. ENCASE FOUR FEET OF SEWER AT POINTS OF INTERFERENCE WITH POLES, CASE III, 5-172.
  11. HOUSE LATERALS TO BE CONSTRUCTED WITH INVERTS AT PROPERTY LINE 6 FEET BELOW CURB GRADE EXCEPT AS NOTED.
  12. ALL STRUCTURES SHALL BE BRICK SEWER STRUCTURES, 5-104, EXCEPT AS NOTED.
  13. FOR ALLOWABLE LEAKAGE TEST USE FORMULA NO. 1, SPECS, SEC. 54.
  14. MANHOLE TOPS IN UNIMPROVED RIGHTS-OF-WAY TO BE SIX INCHES ABOVE FINISHED GRADE.
  15. THE CONTRACTOR SHALL NOTIFY THE CONSTRUCTION DIVISION BY TELEPHONE, MADISON 9-4147, EXT. 6564 AT LEAST TWENTY-FOUR HOURS BEFORE STARTING ANY WORK UNDER THIS CONTRACT.
  16. STANDARD SPECIFICATIONS DATED OCT. 25, 1961 APPLY IN CONSTRUCTION OF THIS PROJECT.
  17. AS THE LOCATIONS SHOWN FOR EXISTING SUBSTRUCTURES HAVE BEEN TAKEN FROM RECORDS & THESE RECORDS ARE AND CONSIDERED TO BE AS ACCURATE AS POSSIBLE IT SHALL BE THE CONTRACTOR'S RESPONSIBILITY TO LOCATE ALL UNDERGROUND LINES OF EVERY NATURE WHETHER SHOWN HEREON OR NOT AND PROTECT THEM FROM DAMAGE. THE CONTRACTOR SHALL BEAR THE TOTAL BURDEN OF RESPONSIBILITY IN ANY CASE CAUSED BY ANY OPERATION IN CONNECTION WITH THE PROSECUTION OF THIS WORK.

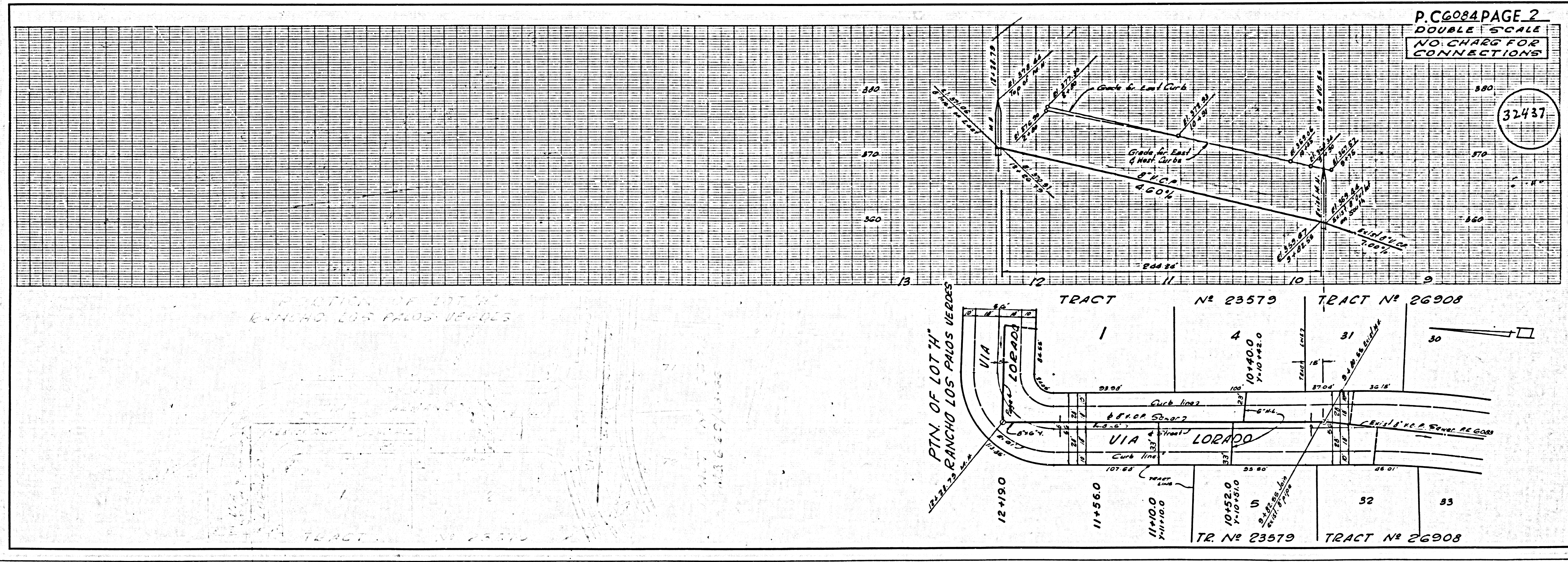
PRIVATE CONTRACT NO. 6084  
W.S. 27  
2 SHEETS; 4 PAGES  
SCALE: VERT. 1"=8'  
HORIZ. 1"=40'  
JAN. 1961  
PREPARED IN THE OFFICES OF  
BARCLAY-PEARSON CO. INC.  
By: Edward L. Pearson  
REG. C. E. NO. 9783  
FOR LEGEND SEE PLAN NO. S-A-64

32436

NOTE:  
GRADES TO WHICH THIS IMPROVEMENT IS TO BE CONSTRUCTED ARE SHOWN ON PLANS AND PROFILES. GRADE POINTS FOR TOP OF CURBS, CENTER LINE OF STREETS OR CENTER LINE OF ALLEYS ARE SHOWN BY CIRCLES ON PROFILES. AT ALL POINTS BETWEEN DESIGNATED POINTS THE GRADE SHALL BE ESTABLISHED SO AS TO CONFORM TO A STRAIGHT LINE DRAWN BETWEEN SAID DESIGNATED POINTS.  
ELEVATIONS ARE IN FEET ABOVE U.S.C. & G.S. SEA LEVEL DATUM OF 1929.  
THIS DRAWING AND THE DATA HEREON ARE HEREBY MADE A PART OF THE SPECIFICATIONS.  
WORK SHALL BE CONSTRUCTED ACCORDING TO SPECIFICATIONS ON FILE IN THE OFFICE OF THE COUNTY ENGINEER AND SHALL BE PROSECUTED ONLY IN THE PRESENCE OF THE COUNTY ENGINEER.  
BEFORE WORK CAN BE STARTED, THE CONTRACTOR MUST OBTAIN A PERMIT TO EXCAVATE IN COUNTY STREETS FROM THE L.A. COUNTY ROAD DEPT., DISTRICT OFFICE NO. 3, AND PAY A F.E.D. TO THE COUNTY ENGINEER, ROOM 310 COUNTY ENGINEER BLDG., 108 N. 2ND ST., SUFFICIENT TO COVER THE COST OF CONSTRUCTION INSPECTION AND RECORD PLANS.  
APPROVAL OF THIS PLAN BY THE COUNTY OF LOS ANGELES DOES NOT CONSTITUTE A REPRESENTATION AS TO THE ACCURACY OF THE LOCATION OR THE EXISTENCE OR NON-EXISTENCE OF ANY UNDERGROUND UTILITY PIPE, OR STRUCTURE WITHIN THE LIMITS OF THIS PROJECT. THIS NOTE APPLIES TO ALL PAGES.  
IF WORK IS TO BE DONE IN A STATE HIGHWAY, A PERMIT MUST BE OBTAINED FROM THE STATE OF CALIFORNIA, DIVISION OF HIGHWAYS, 128 SOUTH SPRING STREET.

COUNTY OF LOS ANGELES, CALIFORNIA  
APPROVED, JOHN A. LAMBIE, COUNTY ENGINEER  
APPROVED, L.D. PARKHURST, CHIEF ENGINEER  
BY: Robert S. Vukobratovic, ASST. SANITATION ENGINEER  
BY: J.H. Williams, OFFICE ENGINEER  
CHECKED BY: W. W. Underhill  
OFFICE OF COUNTY ENGINEER, REG. C. E. NO. 2406  
SUBMITTED BY: Jack C. Karsening, MISS HERRERA CENTRALIA HULL ELECTRICAL ENGINEER.

NO CONNECTIONS FOR THE DISPOSAL OF INDUSTRIAL WASTES SHALL BE MADE TO SEWERS SHOWN ON THESE DRAWINGS WITHOUT WRITTEN PERMISSION FROM THE CHIEF ENGINEER AND GENERAL MANAGER OF THE COUNTY SANITATION DISTRICTS.



P.C. 6084 PAGE 2  
DOUBLE SCALE  
NO CHARGE FOR CONNECTIONS

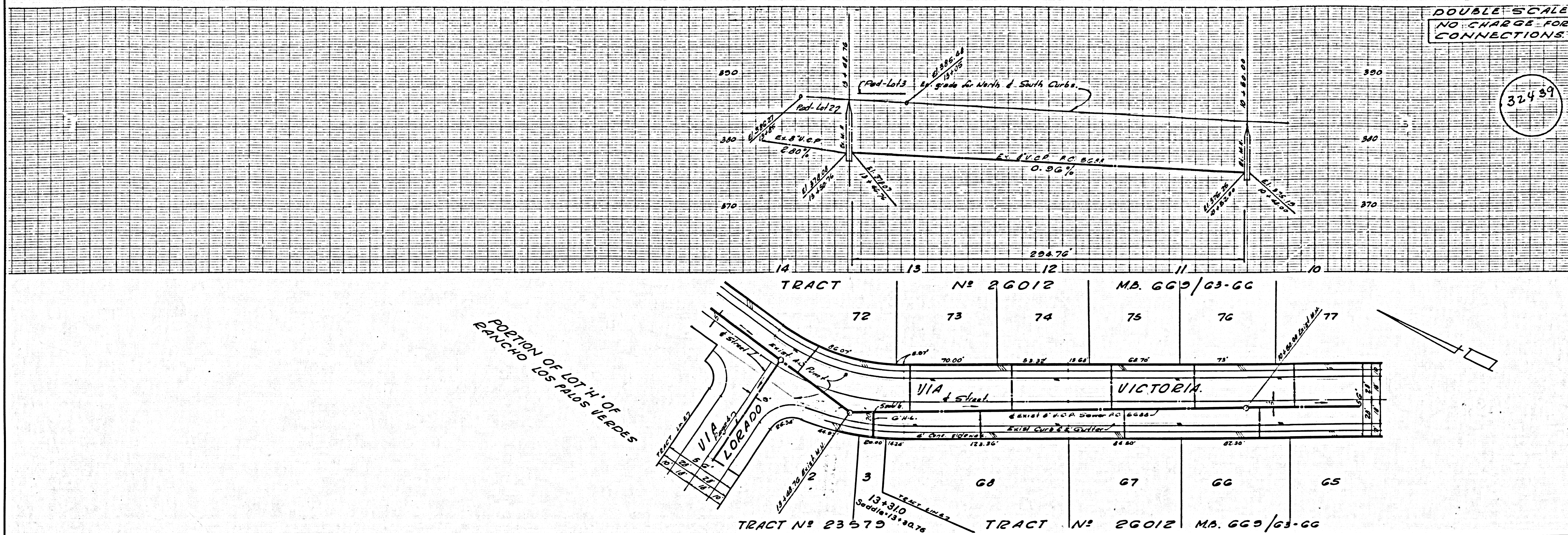
32437

PORTION OF LOT 4  
RANCHO LOS PALOS VERDES



DOUBLE SCALE  
NO CHARGE FOR  
CONNECTIONS

32439



DOUBLE SCALE  
NO CHARGE FOR  
CONNECTIONS

32438

