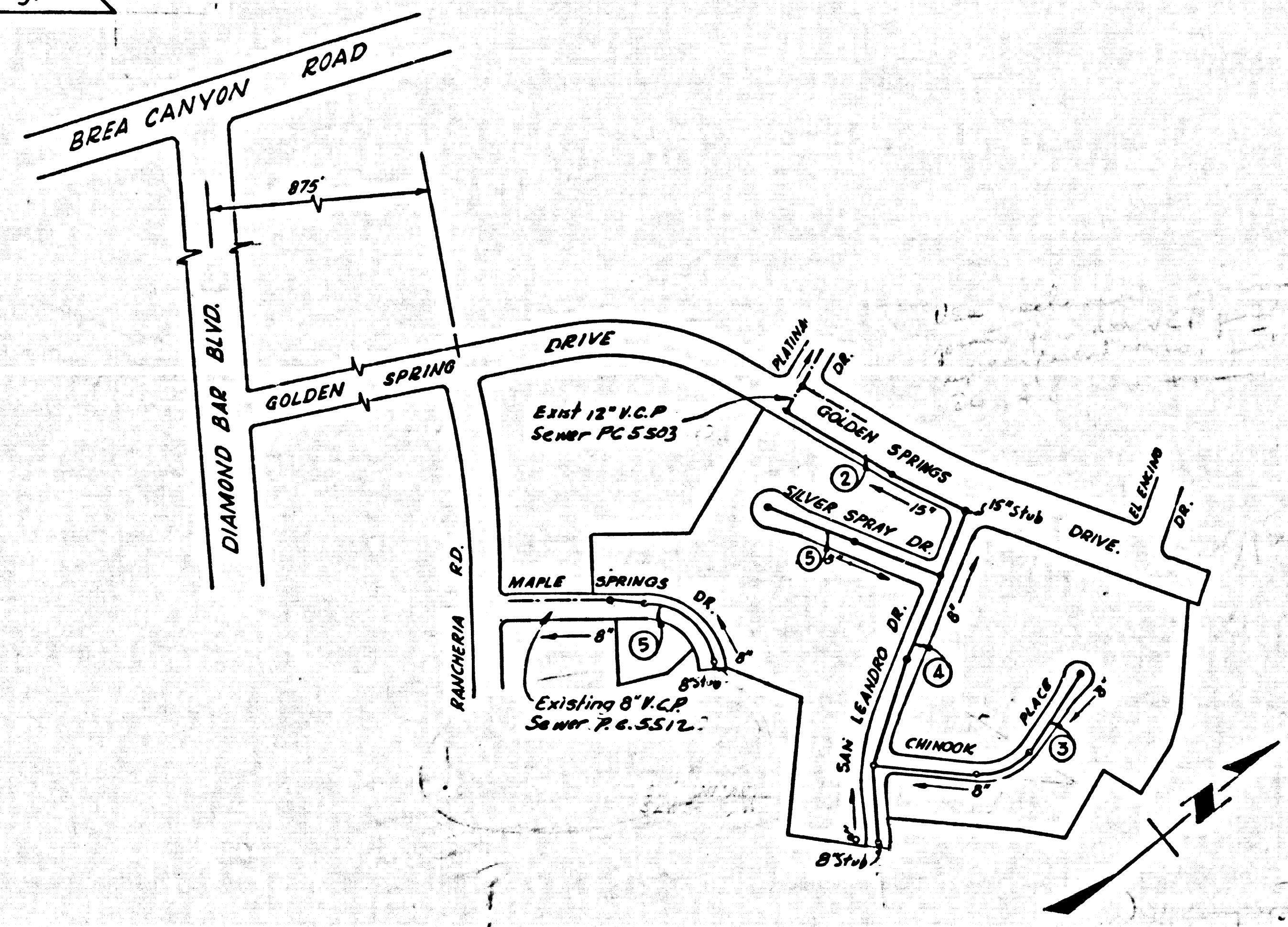


BENCH MARK N° 562128 ELEV. 762.798
Tag in west curb of Diamond Bar Blvd.
2 ft. North of B.C.P. at NW Corner of Diamond
Bar Blvd. & Golden Springs Drive.
40 ft. ± W. & 69 ft. ± N. of Int. 1955 Adj.



DOUBLE SCALE
SAN DIMAS BLDG. DIST. NO. 10

PROFILE ALIGNMENT AND GRADE OF P.C. 6085
SANITARY SEWERS PAGE 1
TO BE CONSTRUCTED IN J.N. 0357.27

TRACT N° 26126
PRIVATE CONTRACT NO. 6085

W.S. 39
3 SHEETS: 5 PAGES
SCALE: VERT. 1"=8' HORIZ. 1"=40'
SEPTEMBER, 1962
PREPARED IN THE OFFICES OF
AMCO ENGINEERS
8844 W. OLYMPIC BLVD. B.H.
By: J. George Araujo REG. C. E. NO. 11467

- NOTES:
1. PROVIDE STAKES ON THE PROPERTY LINE OR PROPERTY LINES PRODUCED AT RIGHT ANGLES TO THE SEWER LINE AT THE CENTER LINE OF EACH MANHOLE.
 2. NO REPRESENTATIVE OF THE COUNTY ENGINEER WILL SURVEY OR LAY OUT ANY PORTION OF THE WORK.
 3. THE OWNER OR HIS AUTHORIZED REPRESENTATIVE SHALL FURNISH THE COUNTY ENGINEER WITH GRADE SHEETS AND STATIONING FOR ALL HOUSE LATERALS AND Y BRANCHES AND SHALL PROVIDE STAKES FOR THEM AT THEIR PROPER LOCATIONS WITH STATIONING PLAINLY MARKED. ANY CHANGE IN LOCATION SHALL BE REQUESTED IN WRITING BY THE OWNER OR HIS REPRESENTATIVE.
 4. THE PRIVATE ENGINEER SHALL FURNISH THE HOUSE LATERAL DEPTH AT THE PROPERTY LINE BELOW THE TOP OF CURB ELEVATION FOR EACH HOUSE LATERAL ON THE GRADE SHEET.
 5. NO REVISIONS SHALL BE MADE IN THESE PLANS WITHOUT THE APPROVAL OF THE COUNTY ENGINEER.
 6. USE STANDARD MANHOLE FRAMES AND COVERS, 5-117, EXCEPT AS NOTED.
 7. USE EXTRA STRENGTH PIPE ALL PIPE STANDARD DEPTH EXCEPT AS NOTED.
 8. USE MECHANICAL COMPRESSION JOINTS FOR ALL V.C.P. PER SPECIFICATIONS, SECT 3A, 18-19.
 9. RESURFACE ALL TRENCH WITHIN PAVED AREA TO MEET L.A. COUNTY ROAD DEPT. OR CALIF. STATE HIGHWAY REQUIREMENTS IN ACCORDANCE WITH PERMITS.
 10. ENCASE FOUR FEET OF SEWER AT POINTS OF INTERFERENCE WITH POLES, CASE III, 5-117.
 11. HOUSE LATERALS TO BE CONSTRUCTED WITH INVERTS AT PROPERTY LINE 6 FEET BELOW CURB GRADE EXCEPT AS NOTED.
 12. MANHOLES SHALL BE BRICK SEWER STRUCTURES, 2-104 PRECAST CONCRETE MANHOLES PER 5-10-15E OR 5-10-17B FOR ALLOWABLE LEAKAGE TEST USE FORMULA NO. 1, SECT. 3C, 54.
 13. MANHOLE TOPS IN UNIMPROVED RIGHTS-OF-WAY TO BE SIX INCHES ABOVE FINISHED GRADE.
 14. THE CONTRACTOR SHALL NOTIFY THE CONSTRUCTION DIVISION BY TELEPHONE, MADISON 5-4717, EXT 8534 AT LEAST TWENTY-FOUR HOURS BEFORE STARTING ANY WORK UNDER THIS CONTRACT.
 15. STANDARD SPECIFICATIONS DATED MAY 25, 1962 APPLY IN THE CONSTRUCTION OF THIS PROJECT.
 17. SEWERS IN FILLED GROUND COMPACTION:
 - a) CONSTRUCTION WILL NOT BE PERMITTED IN FILLED AREAS UNLESS ACCEPTABLE CERTIFICATION IS SUBMITTED TO THE CONSTRUCTION DIVISION OF THE COUNTY ENGINEERS DEPARTMENT THAT RELATIVE COMPACTION IS GREATER THAN 80%.
 - b) IF COMPACTION IS LESS THAN 80% THE SEWER MUST BE GRADED PER 5-106 OR HAVE A SPECIAL BASE COURSE PER 5-179, CASE III. SPECIAL MANHOLE BASES MUST BE INSTALLED PER 5-123 AS INDICATED ON THE PLANS.
 - c) IF COMPACTION IS GREATER THAN 80% CRADINGS AND SPECIAL BASES ARE NOT REQUIRED.
 18. ALL STATE AND LOCAL TRENCH SAFETY ORDERS SHALL BE RIGIDLY ENFORCED.

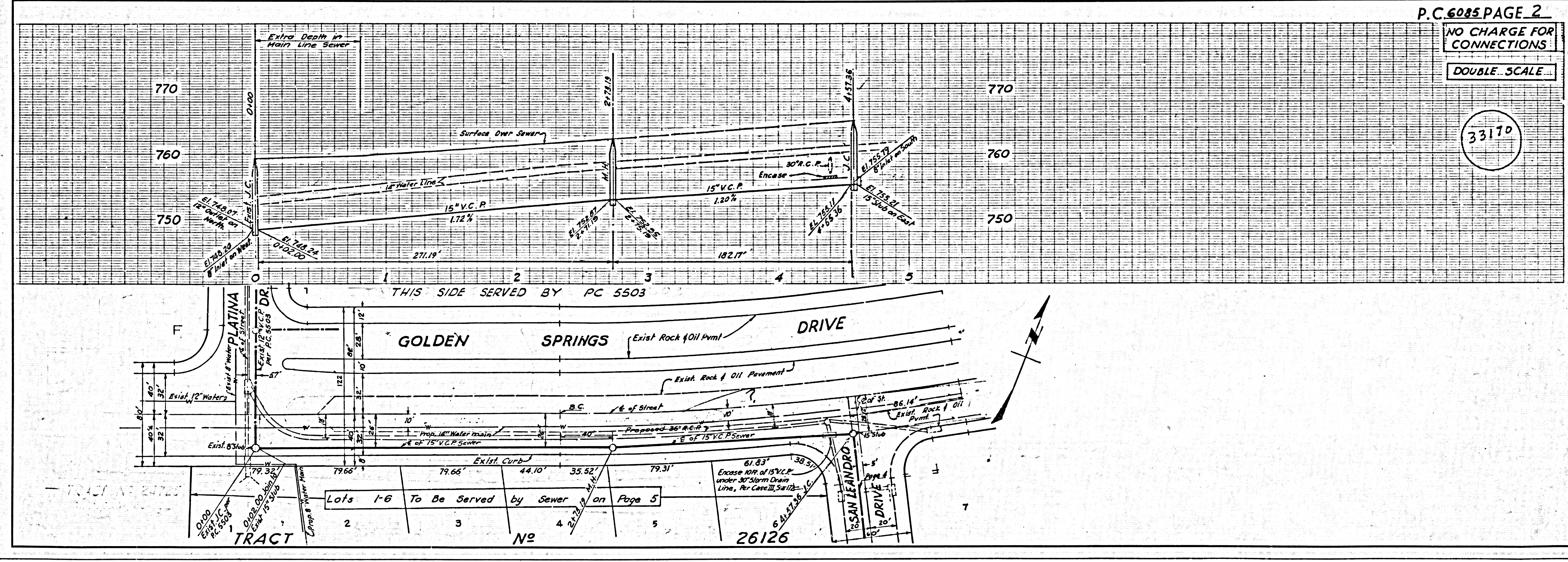
DOUBLE SCALE
VERTICALLY

NO CHARGE FOR
CONNECTIONS
D. L. Olson 9/22/62

NOTE:
GRADES TO WHICH THIS IMPROVEMENT IS TO BE CONSTRUCTED ARE SHOWN ON PLANS AND PROFILES. GRADE POINTS FOR TOP OF CURBS, CENTER LINE OF STREETS OR CENTER LINE OF ALLEYS ARE SHOWN BY CIRCLES ON PROFILES. AT ALL POINTS BETWEEN DESIGNATED POINTS THE GRADE SHALL BE ESTABLISHED SO AS TO CONFORM TO A STRAIGHT LINE DRAWN BETWEEN SAID DESIGNATED POINTS.
ELEVATIONS ARE IN FEET ABOVE U.S.C. & G.S. SEA LEVEL DATUM OF 1929.
THIS DRAWING AND THE DATA HEREON ARE HEREBY MADE A PART OF THE SPECIFICATIONS.
WORK SHALL BE CONSTRUCTED ACCORDING TO SPECIFICATIONS ON FILE IN THE OFFICE OF THE COUNTY ENGINEER AND SHALL BE PROSECUTED ONLY IN THE PRESENCE OF THE COUNTY ENGINEER.
BEFORE WORK CAN BE STARTED, THE CONTRACTOR MUST OBTAIN A PERMIT TO EXCAVATE IN COUNTY STREETS FROM THE L.A. COUNTY ROAD DEPT., DISTRICT OFFICE NO. 1, AND PAY A FEE TO THE COUNTY ENGINEER, ROOM 510 COUNTY ENGINEER BLDG., 408 W. 2ND ST. SUFFICIENT TO COVER THE COST OF CONSTRUCTION INSPECTION AND RECORD PLANS.
APPROVAL OF THIS PLAN BY THE COUNTY OF LOS ANGELES DOES NOT CONSTITUTE A REPRESENTATION AS TO THE ACCURACY OF THE LOCATION OF OR THE EXISTENCE OR NON-EXISTENCE OF ANY UNDERGROUND UTILITY PIPE OR STRUCTURE WITHIN THE LIMITS OF THIS PROJECT. THIS NOTE APPLIES TO ALL PAGES.
IF WORK IS TO BE DONE IN A STATE HIGHWAY, A PERMIT MUST BE OBTAINED FROM THE STATE OF CALIFORNIA, DIVISION OF HIGHWAYS, 128 SOUTH SPRING STREET.

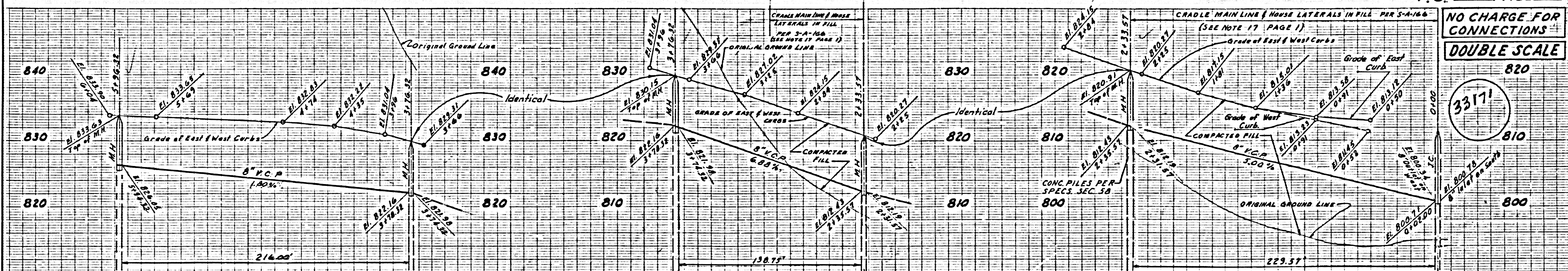
FOR LEGEND SEE PLAN NO. S.A-64
COUNTY OF LOS ANGELES, CALIFORNIA
APPROVED, JOHN A. LAMBIE, COUNTY ENGINEER APPROVED, J.D. PLANKHURST, CHIEF ENGINEER
BY: [Signature] ASST. SANITATION ENGINEER BY: [Signature] OFFICE ENGINEER
CHECKED BY: [Signature] 9-27-62
OFFICE OF COUNTY ENGINEER, REG. C. E. NO. 3446
SUBMITTED: [Signature] 9-28-62
SAN DIMAS, REGIONAL ENGINEER.

NO CONNECTIONS FOR THE DISPOSAL OF INDUSTRIAL WASTES SHALL BE MADE TO SEWERS SHOWN ON THESE DRAWINGS WITHOUT WRITTEN PERMISSION FROM THE CHIEF ENGINEER AND GENERAL MANAGER OF THE COUNTY SANITATION DISTRICTS.



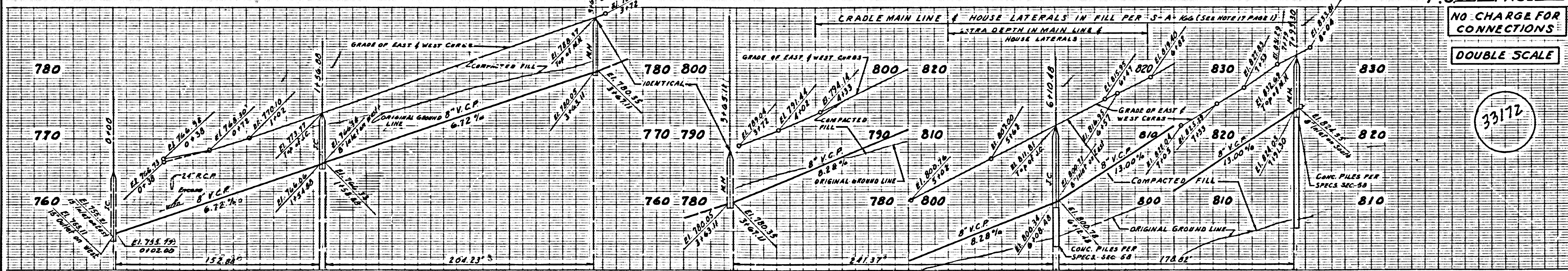
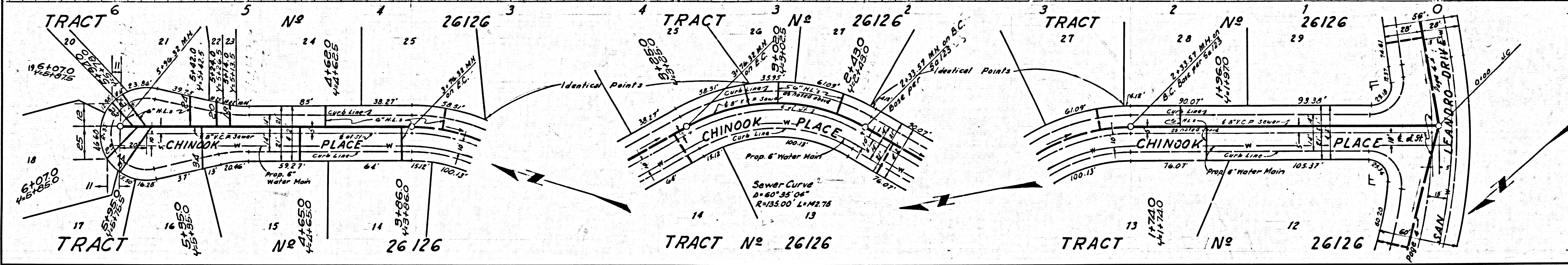
P.C. 6085 PAGE 2
NO CHARGE FOR
CONNECTIONS
DOUBLE SCALE

33170



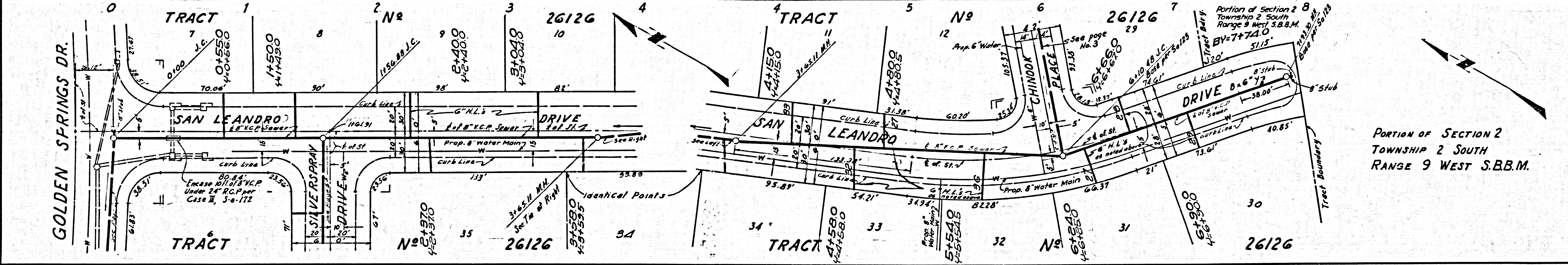
NO CHARGE FOR CONNECTIONS
DOUBLE SCALE

33171



NO CHARGE FOR CONNECTIONS
DOUBLE SCALE

33172



PORTION OF SECTION 2
TOWNSHIP 2 SOUTH
RANGE 9 WEST S.B.M.

