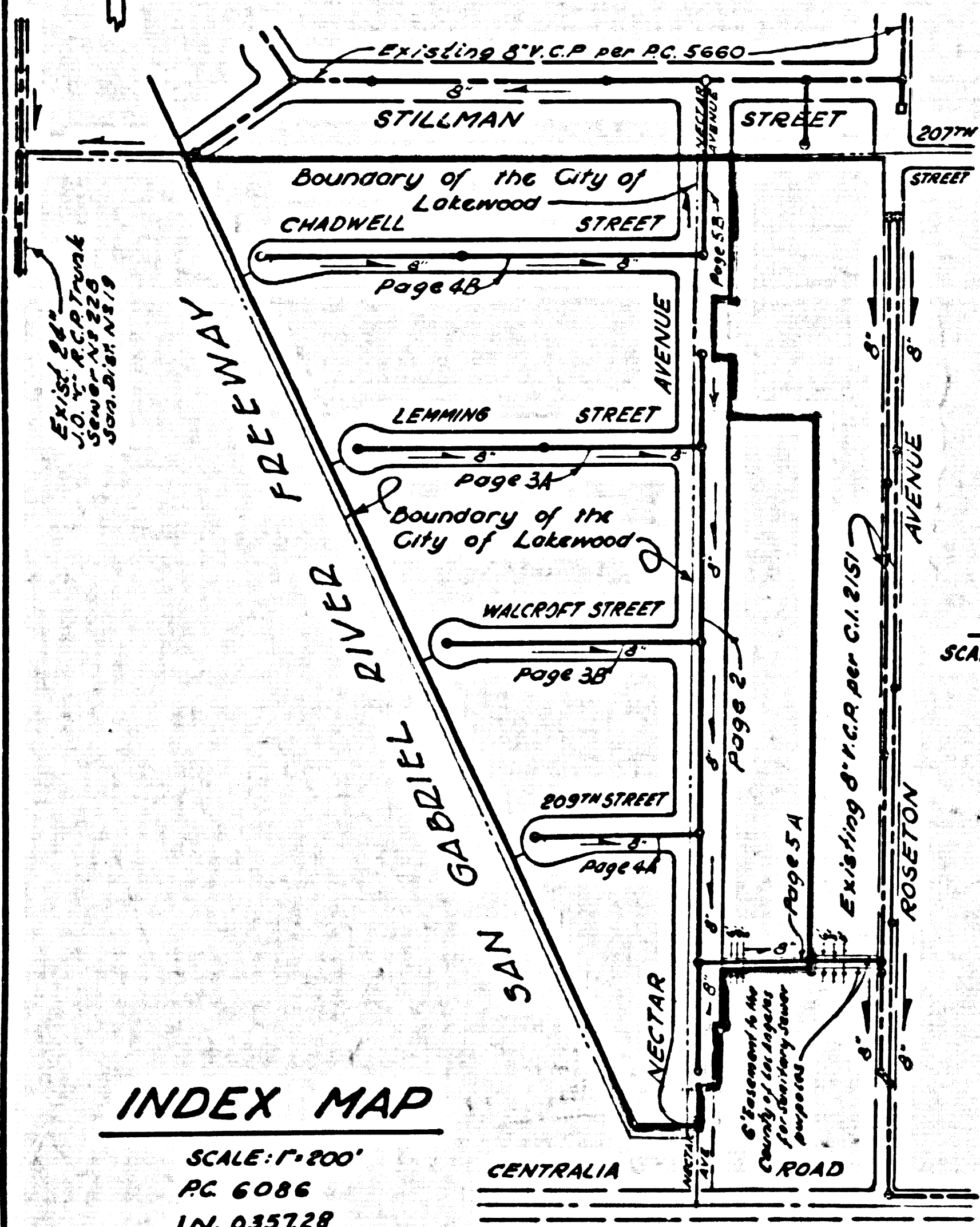


**BENCH MARK**

S.Y. 3389  
Found Sid. C.S. Man. in Well with cover @  
Centerline Intersection Pioneer Blvd. &  
Centralia Road, Wily Artesia Quad, Adj. 1855  
Elev. 34.974



**INDEX MAP**

SCALE: 1"=200'  
P.C. 6086  
J.N. 035728

**LAKWOOD BLDG. DIST. NO. 4.3**  
**LAKWOOD BLDG. DIST. NO. 4.01**

PROFILE ALIGNMENT AND GRADE OF **P.C. 6086**  
**SANITARY SEWERS PAGE 1**  
TO BE CONSTRUCTED IN **J.N. 0357.28**

**TRACT No 26639**

**PRIVATE CONTRACT NO. 6086**

W.S. 31  
3 SHEETS; 5 PAGES

SCALE: VERT. 1"=4'  
HORIZ. 1"=40'  
NOVEMBER, 1961  
PREPARED IN THE OFFICES OF

**PARAMOUNT ENGINEERING COMPANY**

By: *[Signature]*  
12-15-61 REG. C. E. NO. 12955

FOR LEGEND SEE PLAN NO. S-A-64

NOTE:  
GRADES TO WHICH THIS IMPROVEMENT IS TO BE CONSTRUCTED ARE SHOWN ON PLANS AND P.C. FILES. GRADE POINTS FOR TOP OF CURBS, CENTER LINE OF STREETS, OR CENTER LINE OF ALLEYS ARE SHOWN BY CIRCLES ON PROFILES AT ALL POINTS BETWEEN DESIGNATED POINTS THE GRADE SHALL BE ESTABLISHED SO AS TO CONFORM TO A STRAIGHT LINE DRAWN BETWEEN SAID DESIGNATED POINTS.  
ELEVATIONS ARE IN FEET ABOVE U.S.C. & G.S. SEA LEVEL DATUM OF 1929.  
THIS DRAWING AND THE DATA HEREON ARE HEREBY MADE A PART OF THE SPECIFICATIONS.  
WORK SHALL BE CONSTRUCTED ACCORDING TO SPECIFICATIONS ON FILE IN THE OFFICE OF THE COUNTY AND CITY ENGINEER AND SHALL BE PROSECUTED ONLY IN THE PRESENCE OF THE COUNTY AND CITY ENGINEERS.  
BEFORE WORK CAN BE STARTED, THE CONTRACTOR MUST OBTAIN A PERMIT TO EXCAVATE IN COUNTY AND CITY AND THE L.A. COUNTY ROAD DEPT., DISTRICT OFFICE NO. 4, AND MAKE A DEPOSIT WITH THE COUNTY AND CITY ENGINEER ROOM 310, COUNTY ENGINEER BUILDING, 108 N. SECOND ST. SUFFICIENT TO COVER THE COST OF CONSTRUCTION INSPECTION AND RECORD PLANS.  
APPROVAL OF THIS PLAN BY THE COUNTY OF LOS ANGELES DOES NOT CONSTITUTE A REPRESENTATION AS TO THE ACCURACY OF THE LOCATION OR OF THE EXISTENCE OR NON-EXISTENCE OF ANY UNDERGROUND UTILITY PIPE, OR STRUCTURE WITHIN THE LIMITS OF THIS PROJECT. THIS NOTE APPLIES TO ALL PAGES.  
IF WORK IS TO BE DONE IN A STATE HIGHWAY, A PERMIT MUST BE OBTAINED FROM THE STATE OF CALIFORNIA, DIVISION OF HIGHWAYS, 128 SOUTH SPRING STREET.

COUNTY OF LOS ANGELES, CALIFORNIA  
CITY OF LAKWOOD, CALIFORNIA  
APPROVED, JOHN A. LAMBIE, COUNTY AND CITY ENGINEER  
BY: *[Signature]* ASSIST. SANITATION ENGINEER  
BY: *[Signature]* OFFICE ENGINEER  
CHECKED BY: *[Signature]*  
OFFICE OF COUNTY AND CITY ENGINEER REG. C. E. NO. 5496

SUBMITTED BY: *[Signature]* 12-14-61  
LOS BERRITOS REGIONAL ENGINEER R.C.E. NO. 3071

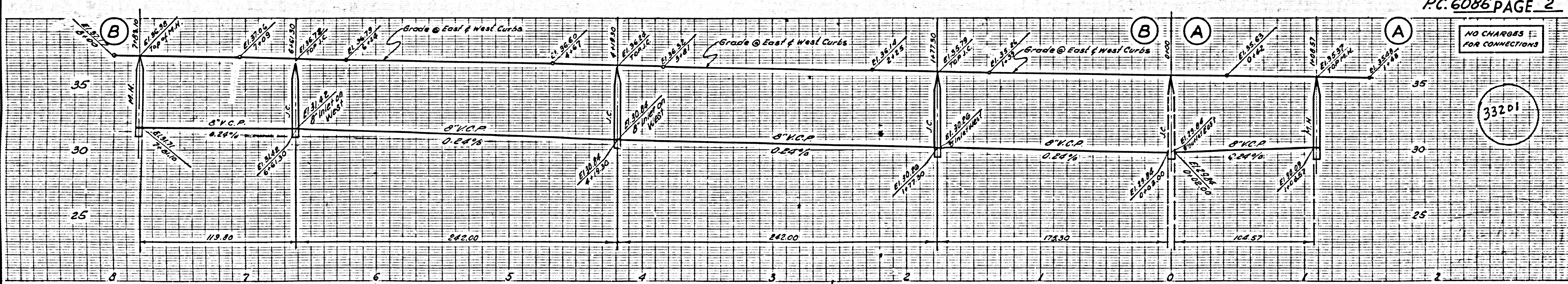
- 1. PROVIDE STAKES ON THE PROPERTY LINE OR PROPERTY LINES PRODUCED AT RIGHT ANGLES TO THE SEWER LINE AT THE CENTER LINE OF EACH MANHOLE.
- 2. NO REPRESENTATIVE OF THE COUNTY ENGINEER WILL SURVEY OR LAY OUT ANY PORTION OF THE WORK.
- 3. THE PRIVATE ENGINEER SHALL FURNISH THE COUNTY ENGINEER WITH GRADE SHEETS AND STATIONING FOR ALL HOUSE LATERALS AND Y BRANCHES AND SHALL PROVIDE STAKES FOR THEM AT THEIR PROPER LOCATIONS WITH STATIONING PLAINLY MARKED. ALL HOUSE LATERALS SHALL BE CONSTRUCTED IN A STRAIGHT ALIGNMENT AT RIGHT ANGLES TO THE MAIN LINE SEWER EXCEPT AS SHOWN ON PLANS. NO UNDERGROUND STRUCTURES SHALL BE REQUESTED IN WRITING BY THE PRIVATE ENGINEER.
- 4. THE PRIVATE ENGINEER SHALL FURNISH THE HOUSE LATERAL DEPTH AT THE PROPERTY LINE BELOW THE TOP OF CURB ELEVATION FOR EACH HOUSE LATERAL ON THE GRADE SHEET.
- 5. NO REVISIONS SHALL BE MADE IN THESE PLANS WITHOUT THE APPROVAL OF THE COUNTY AND CITY ENGINEER.
- 6. USE STANDARD MANHOLE FRAMES AND COVERS, 3-11, EXCEPT AS NOTED.
- 7. USE EXTRA STRENGTH PIPE - ALL PIPE IS STANDARD DEPTH.
- 8. USE MECHANICAL COMPRESSION JOINTS FOR ALL V.C.P. JOINTS PER SPECS. SECS. 14, 44 & 48.
- 9. RESURFACE ALL 1'-INCH WIDTH PAVED AREA TO MEET L.A. COUNTY ROAD DEPT. OR CALIF. STATE HIGHWAY REQUIREMENTS IN ACCORDANCE WITH PERMITS.
- 10. ENCASE FOUR FEET OF SEWER AT POINTS OF INTERFERENCE WITH POLES, CASE III, 3-172.
- 11. ALL Y'S TO BE Laid HORIZONTAL AND ALL X'S TO BE CONSTRUCTED WITH 1/4" RISE PER FOOT TO PROPERTY LINE.
- 12. ALL STRUCTURES SHALL BE BRICK SEWER STRUCTURES, 8-104 UNLESS AS NOTED. PRECAST CONCRETE MANHOLES PER D-108 OR D-109.
- 13. FOR ALLOWABLE LEAKAGE TEST USE FORMULA NO. 17, SPECS. SEC. 54.
- 14. MANHOLE TOPS IN UNIMPROVED RIGHTS-OF-WAY TO BE SIX INCHES ABOVE FINISHED GRADE.
- 15. THE CONTRACTOR SHALL NOTIFY THE CONSTRUCTION DIVISION BY TELEPHONE, MADISON 9-474, BY MAIL AT LEAST TWENTY-FOUR HOURS BEFORE STARTING ANY WORK UNDER THIS CONTRACT.
- 16. STANDARD SPECIFICATIONS DATED MAY 15, 1962, APPLY IN THE CONSTRUCTION OF THIS PROJECT.
- 17. ALL STATE AND LOCAL TRENCH SAFETY ORDERS WILL BE RIGIDLY ENFORCED.
- 18. IF DURING THE COURSE OF CONSTRUCTION IT IS DETERMINED THAT THERE IS LESS THAN FOUR FEET OF COVER OVER THE TOP OF MAIN LINE SEWER LATERALS WHICH ARE NOT SHOWN ON THE PLANS, THE PIPE SHALL BE ENCASED PER 8-172, CASE III, UNLESS OTHERWISE APPROVED BY THE COUNTY AND CITY ENGINEER.

NO CHARGES FOR CONNECTIONS

D.M. Hopkins 12-14-61

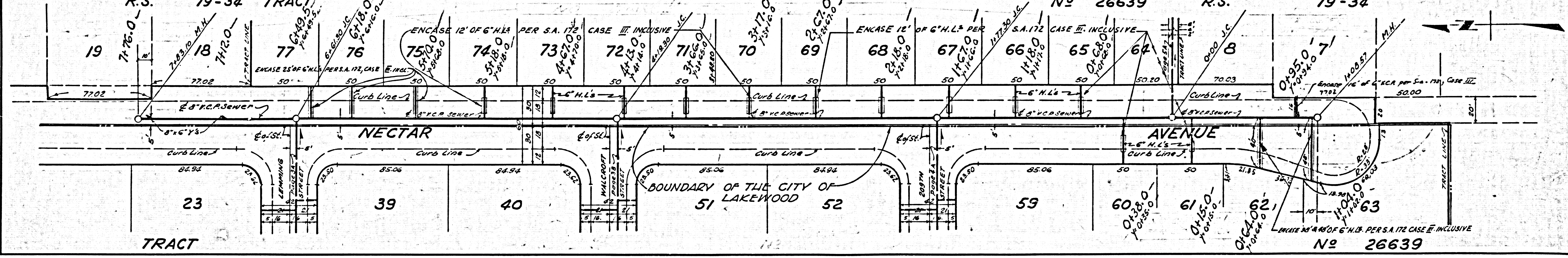
NO CONNECTIONS FOR THE DISPOSAL OF INDUSTRIAL WASTES SHALL BE MADE TO SEWERS SHOWN ON THESE DRAWINGS WITHOUT WRITTEN PERMISSION FROM THE CHIEF ENGINEER AND GENERAL MANAGER OF THE COUNTY SANITATION DISTRICTS.

**P.C. 6086 PAGE 2**

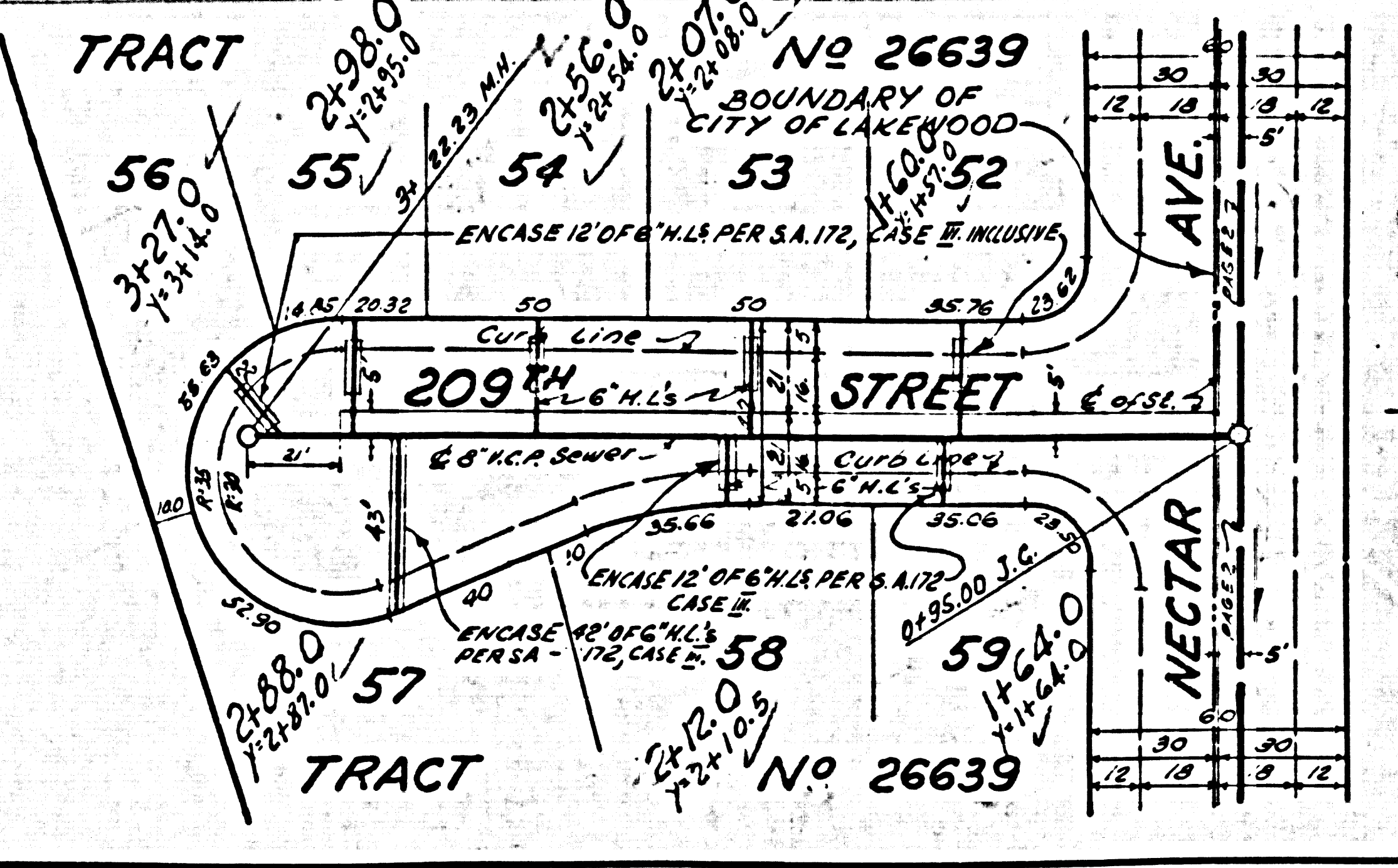
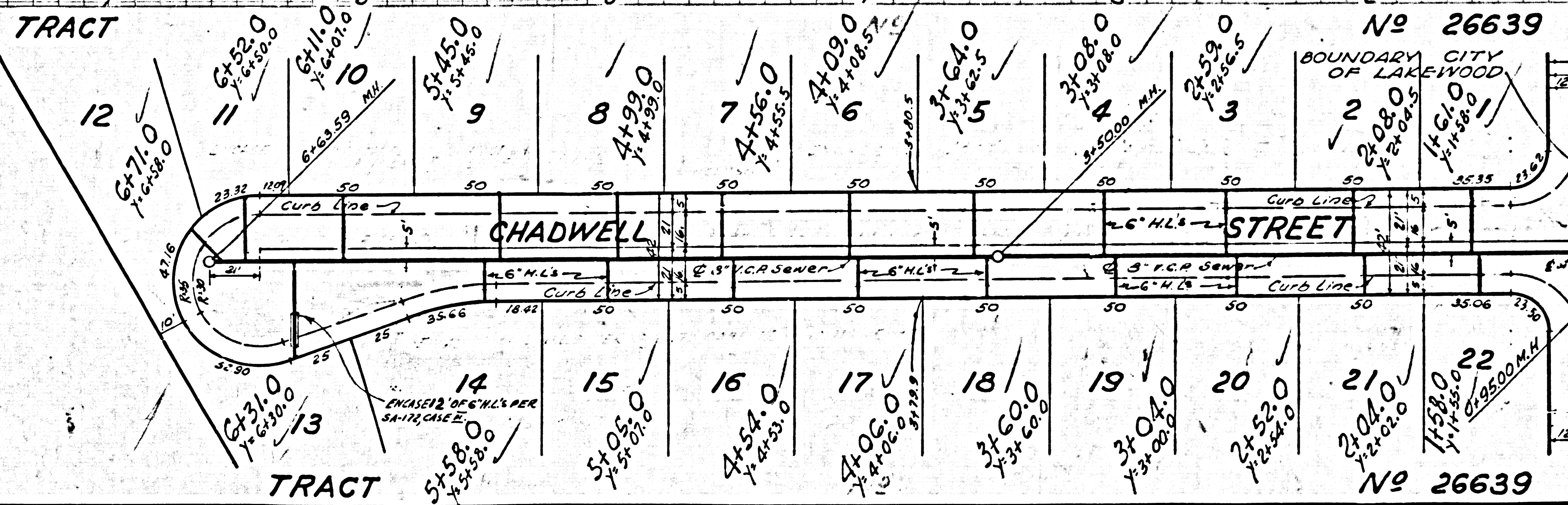
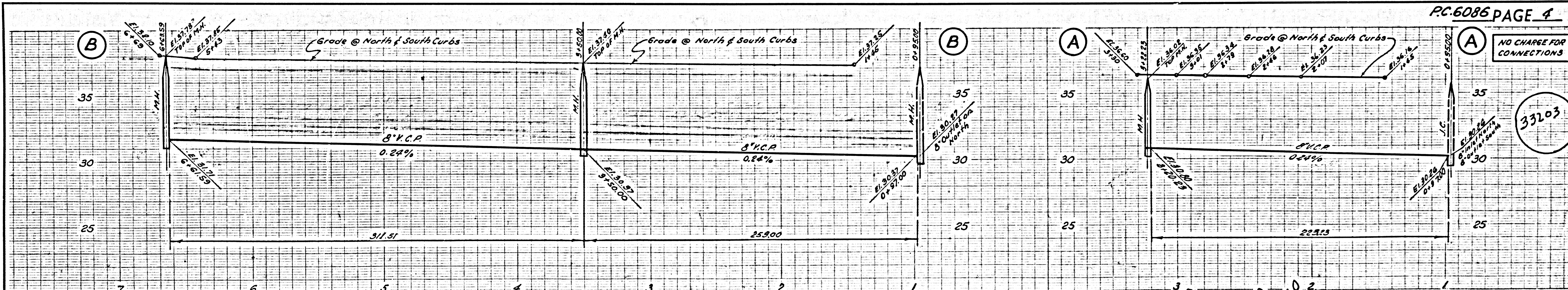
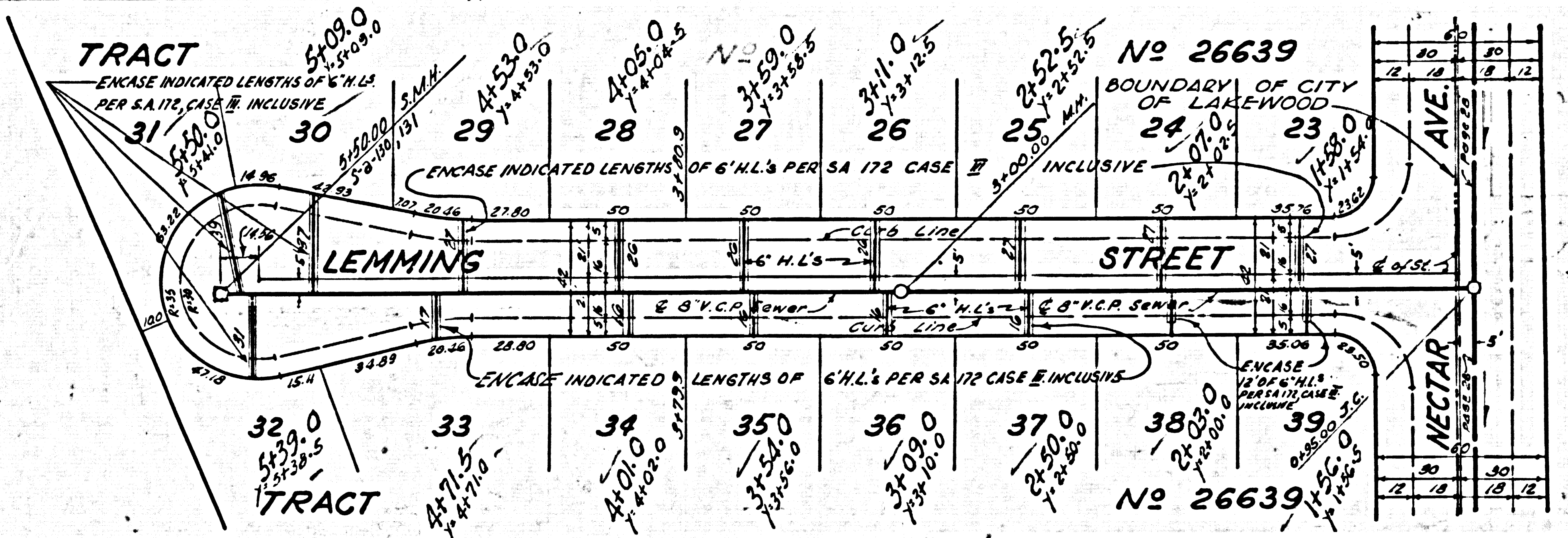
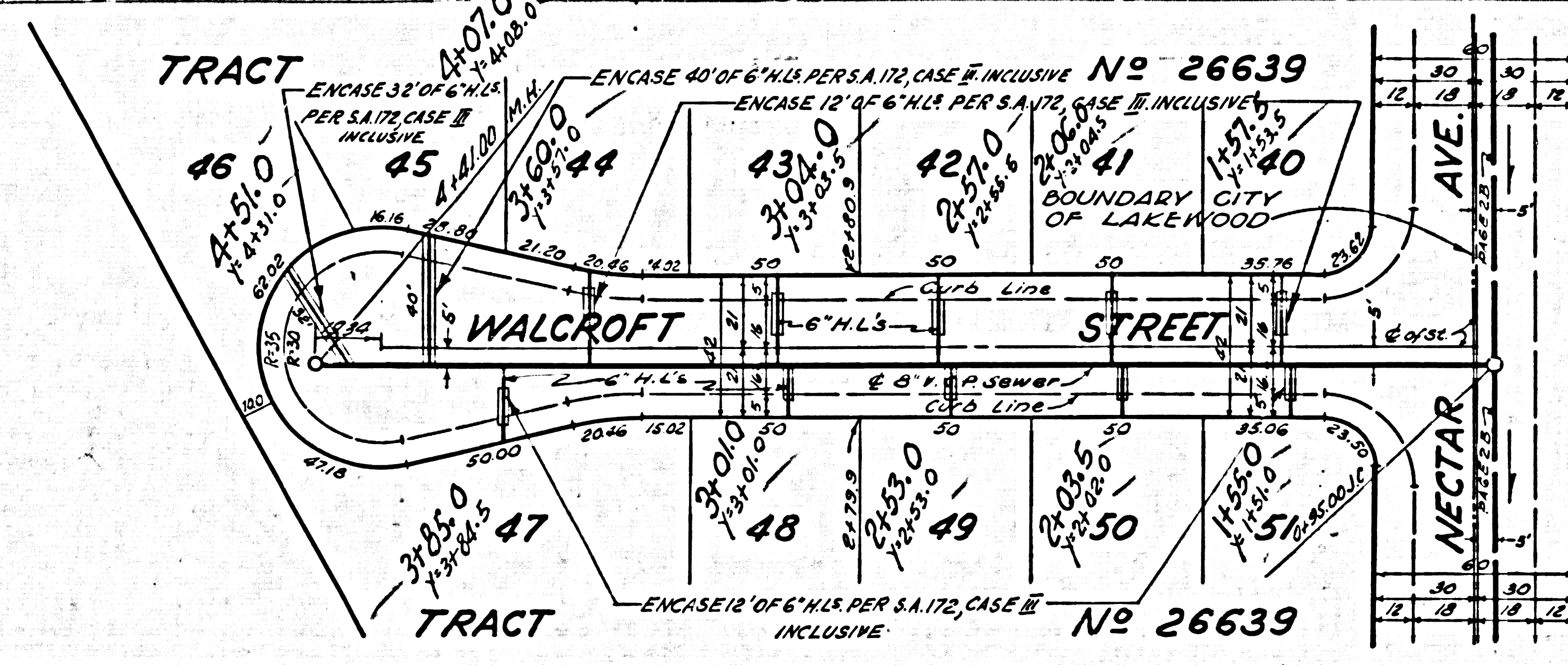
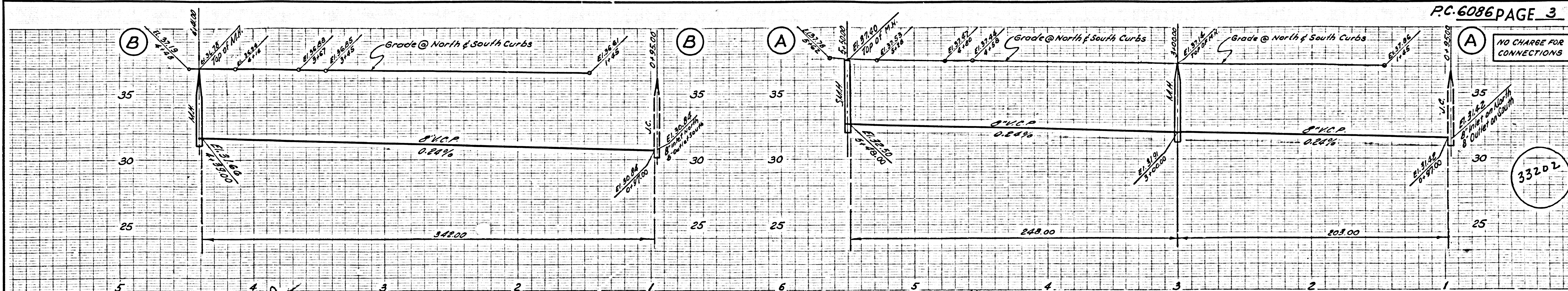


NO CHARGES FOR CONNECTIONS

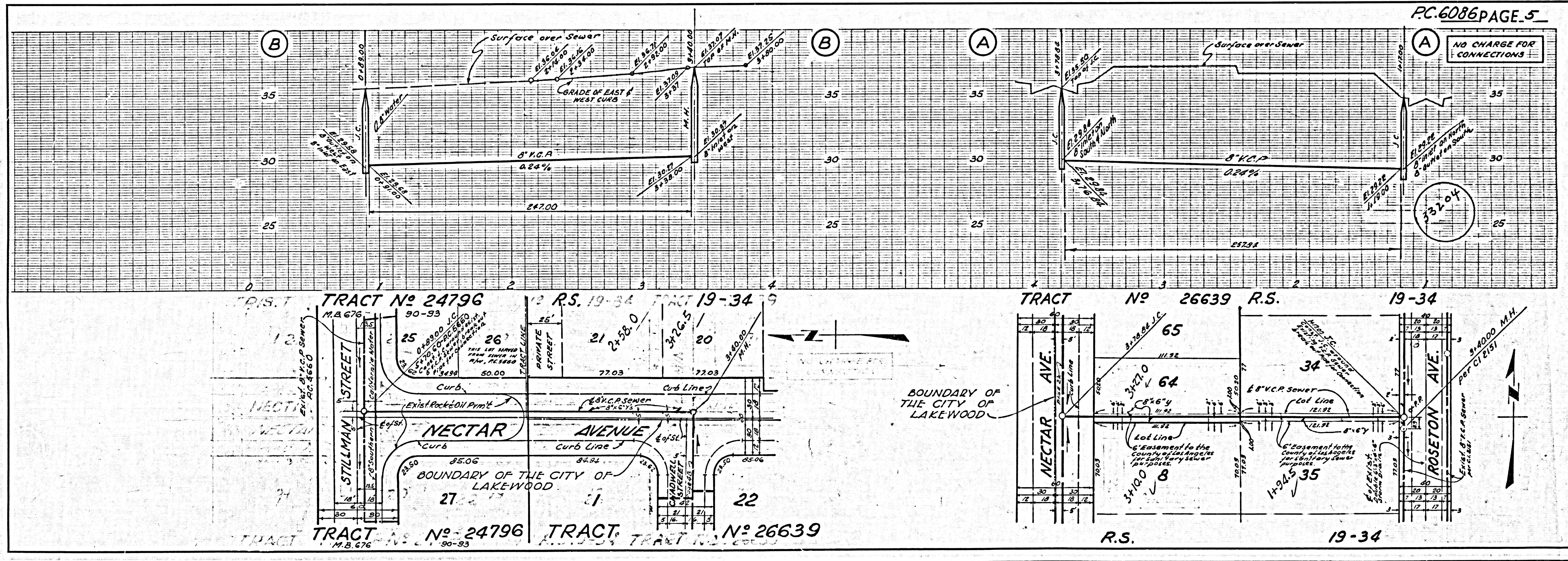
33201



TRACT No 26639 - P.C. 6086 11



15451-V0-SEE33-PC-6086 (S)



NO CHARGE FOR CONNECTIONS

BOUNDARY OF THE CITY OF LAKEWOOD

5-128820-55000-11-10-10