

Bench Mark:
 Palos Verdes Drive West 1 Mile N. Point Vicente
 Lighthouse 46' West of E on Dr. at a cluster of 9
 Eucalyptus Trees a Sfd. C. S. Mon. Stamped
 B.M. 34-28-1954 R.E. 63" set flush with surface
 Elev. 247.624 1960

DOUBLE SCALE
 LOMITA BLDG. DIST. NO. 12.

PROFILE ALIGNMENT AND GRADE OF P.C. 6089
 SANITARY SEWERS PAGE 1
 TO BE CONSTRUCTED IN J.N. 0357.30
 TRACT N^o 26887

- NOTES:
- PROVIDE STAKES ON THE PROPERTY LINE OR PROPERTY LINES PRODUCED AT RIGHT ANGLES TO THE SEWER LINE AT THE CENTER LINE OF EACH MANHOLE.
 - NO REPRESENTATIVE OF THE COUNTY ENGINEER WILL SURVEY OR LAY OUT ANY PORTION OF THE WORK.
 - THE OWNER OR HIS AUTHORIZED REPRESENTATIVE SHALL FURNISH THE COUNTY ENGINEER WITH GRADE SHEETS AND STATIONING FOR ALL HOUSE LATERALS AND Y BRANCHES AND SHALL PROVIDE STAKES FOR THEM AT THEIR PROPER LOCATIONS WITH STATIONING PLAINLY MARKED. ANY CHANGE IN LOCATION SHALL BE REQUESTED IN WRITING BY THE OWNER OR HIS REPRESENTATIVE.
 - NO REVISIONS SHALL BE MADE IN THESE PLANS WITHOUT THE APPROVAL OF THE COUNTY ENGINEER.
 - USE STANDARD MANHOLE FRAMES AND COVERS, S.B. 117, EXCEPT AS NOTED.
 - USE EXTRA STRENGTH PIPE, ALL PIPE STANDARD DEPTH.
 - USE CEMENT MORTAR OR "WEDGE-LOCK" OR "SPELDO SEAL" FOR ALL VITRIFIED CLAY PIPE JOINTS PER SPECS, SEC. 36 (44).
 - RESURFACE ALL TRENCH WITHIN PAVED AREA TO MEET L. A. COUNTY ROAD DEPT. OR CALIF. STATE HIGHWAY DEPT. REQUIREMENTS IN ACCORDANCE WITH PERMITS.
 - ENCASE FOUR FEET OF SEWER AT POINTS OF INTERFERENCE WITH POLES, CASE #, S-3-75.
 - HOUSE LATERALS TO BE CONSTRUCTED WITH INVERTS AT PROPERTY LINE _____ FEET BELOW CURB GRADE EXCEPT AS NOTED.
 - ALL STRUCTURES SHALL BE BRICK SEWER STRUCTURES, S-2-104, EXCEPT AS NOTED.
 - FOR ALLOWABLE LEAKAGE TEST USE FORMULA NO. _____ SPECS, SEC. 34.
 - MANHOLE TOPS IN UNIMPROVED RIGHTS-OF-WAY TO BE 4" ABOVE FINISHED GRADE.
 - THE PRIVATE ENGINEER SHALL FURNISH THE HOUSE LATERAL DEPTH AS THE PROPERTY LINE BELOW THE TOP OF CURB ELEVATION FOR EACH HOUSE LATERAL ON THE GRADE SHEET.
 - THE CONTRACTOR SHALL NOTIFY THE CONSTRUCTION DIVISION BY TELEPHONE, MADISON 9-4747, EXT. BISEI AT LEAST 24 HOURS BEFORE STARTING ANY WORK UNDER THIS CONTRACT.
 - Specifications Dated Oct. 25, 1961 Apply to the Construction of this Project.
 - House Laterals on North Side of Rue De La Fleur and the East Side of Via Rivera to be Constructed at a Slope Giving 8' Below Future Curb at Future Property Line.

PRIVATE CONTRACT NO. 6089

W.S. 27
 2 SHEETS, 4 PAGES
 SCALE: VERT. 1" = 4' HORIZ. 1" = 40' JANUARY, 1962
 PREPARED IN THE OFFICES OF
 ENGINEERING SERVICE CORPORATION

31820

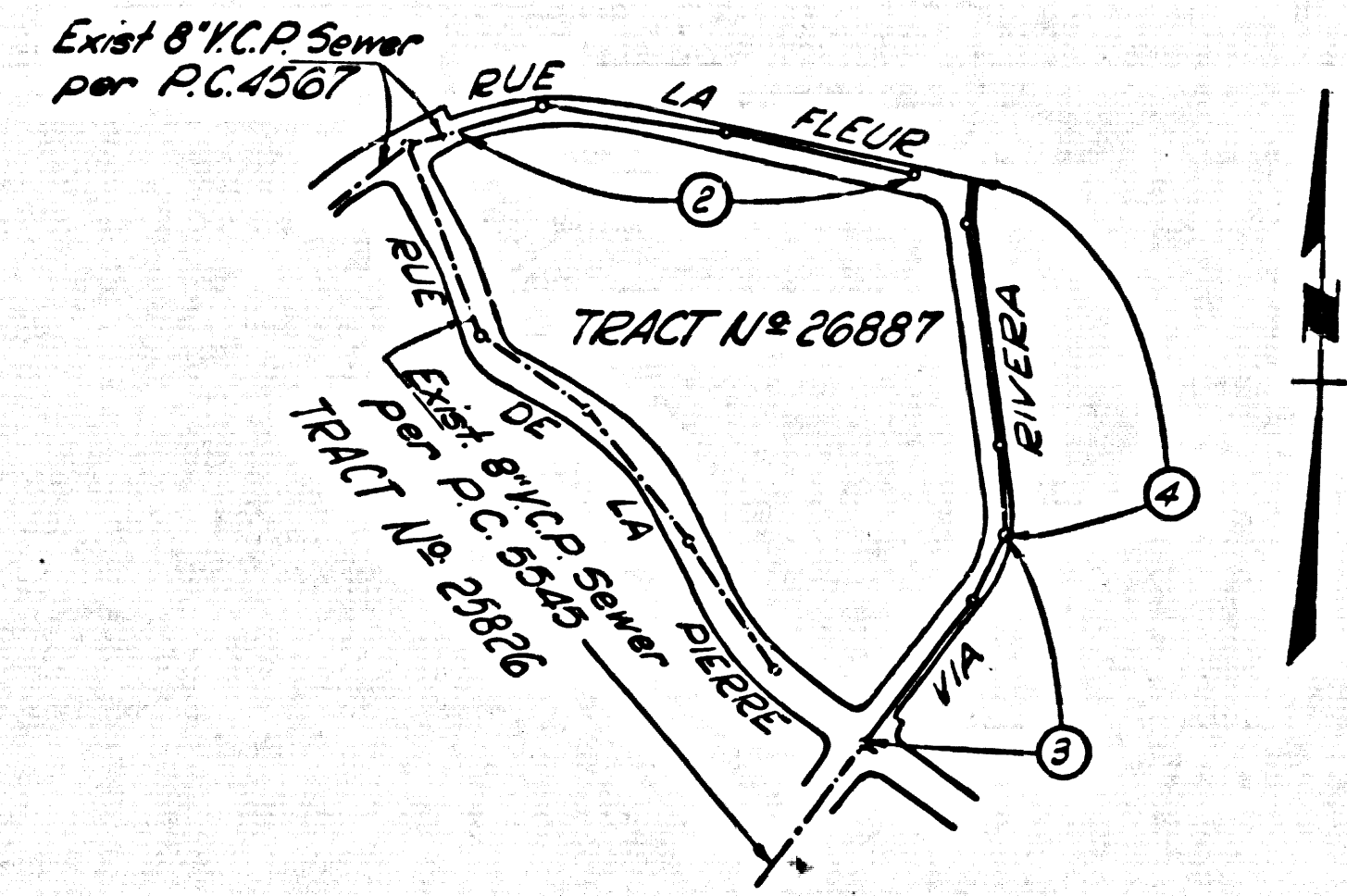
By: *R. J. Lewis*
 REG. C. E. NO. 3692
 FOR LEGEND SEE PLAN NO. S-A-64

NOTE:
 GRADES TO WHICH THIS IMPROVEMENT IS TO BE CONSTRUCTED ARE SHOWN ON PLANS AND PROFILES. GRADE POINTS FOR TOP OF CURBS, CENTER LINE OF STREETS, OR CENTER LINE OF ALLEYS ARE SHOWN BY CIRCLES ON PROFILES. AT ALL POINTS BETWEEN DESIGNATED POINTS THE GRADE SHALL BE ESTABLISHED SO AS TO CONFORM TO A STRAIGHT LINE DRAWN BETWEEN SAID DESIGNATED POINTS.
 ELEVATIONS ARE IN FEET ABOVE U.S.C. & G.S. SEA LEVEL, DATUM OF 1929.
 THIS DRAWING AND THE DATA HEREON ARE HEREBY MADE A PART OF THE SPECIFICATIONS.
 WORK SHALL BE CONSTRUCTED ACCORDING TO SPECIFICATIONS ON FILE IN THE OFFICE OF THE COUNTY ENGINEER AND SHALL BE PROSECUTED ONLY IN THE PRESENCE OF THE COUNTY ENGINEER.
 BEFORE WORK CAN BE STARTED THE CONTRACTOR MUST OBTAIN A PERMIT TO EXCAVATE IN COUNTY STREETS FROM THE L. A. COUNTY ROAD DEPT. DIST. OFFICE AND PAY A FEE TO THE COUNTY ENGINEER, ROOM 310 COUNTY ENGINEER BUILDING, INC. 8 1/2 ST. SUFFICIENT TO COVER THE COST OF CONSTRUCTION INSPECTION AND RECORD PLANS.
 APPROVAL OF THIS PLAN BY THE COUNTY OF LOS ANGELES DOES NOT CONSTITUTE A REPRESENTATION AS TO THE ACCURACY OF THE LOCATION OR THE EXISTENCE OR NON-EXISTENCE OF ANY UNDERGROUND UTILITY PIPE, OR STRUCTURE WITHIN THE LIMITS OF THIS PROJECT. THIS NOTE APPLIES TO ALL PAGES.
 IF WORK IS TO BE DONE IN A STATE HIGHWAY, A PERMIT MUST BE OBTAINED FROM THE STATE OF CALIFORNIA, DIVISION OF HIGHWAYS, 128 SOUTH SPRING STREET.

COUNTY OF LOS ANGELES, CALIFORNIA
 APPROVED, JOHN A. LAMBE, COUNTY ENGINEER
 APPROVED, J.D. MCKENNETT, CHIEF ENGINEER
 CO. SAN. DIST. NO. 12
 BY: *R. J. Lewis* ASST. SANITATION ENGINEER
 BY: *J. D. McKennett* OFFICE ENGINEER
 CHECKED BY: *M. J. O'Neil*
 OFFICE OF COUNTY ENGINEER, REG. C. E. NO. 9456

SUBMITTED BY: *Jack C. Lansing* E.S. 1-31-62
 PALOS VERDES-CENTINELA VALLEY REGIONAL ENGINEER, R.C.E. NO. 5631

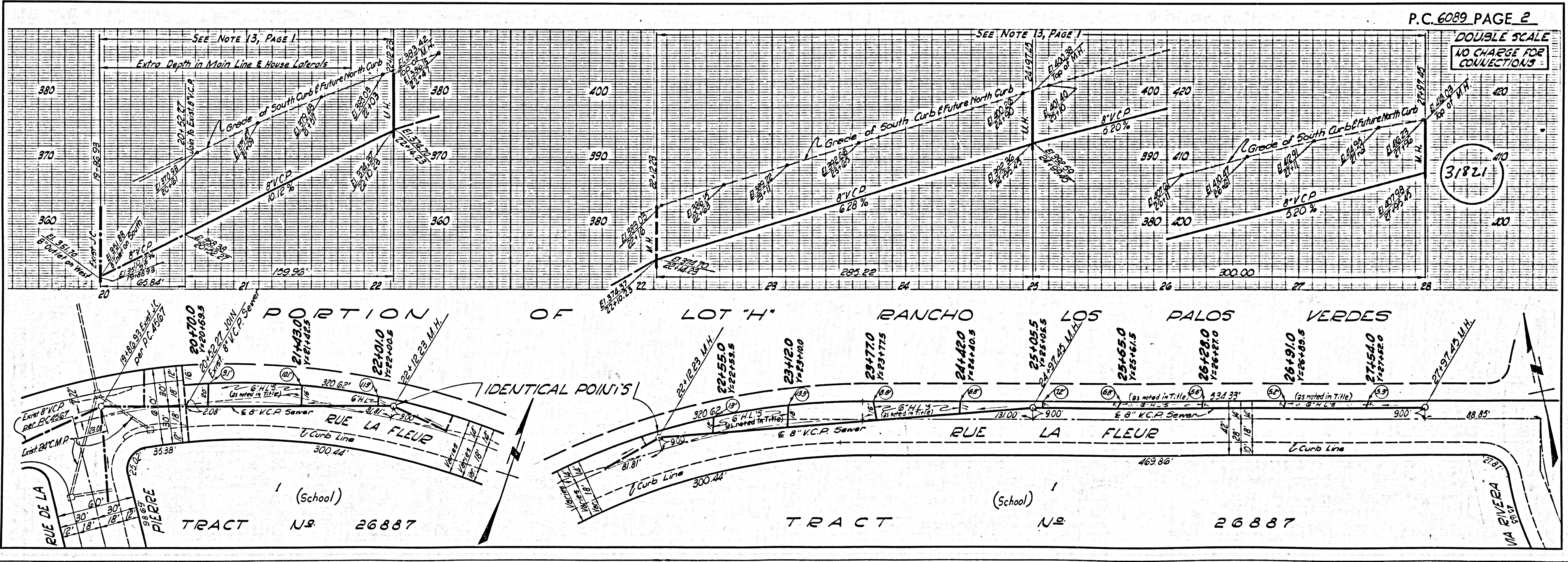
PRIVATE ENGINEER'S
 NOTICE TO CONTRACTOR
 THE EXISTENCE AND LOCATION OF ANY UNDERGROUND UTILITY PIPES OR STRUCTURES SHOWN ON THESE PLANS ARE OBTAINED BY A SEARCH OF THE AVAILABLE RECORDS. TO THE BEST OF OUR KNOWLEDGE THERE ARE NO EXISTING UTILITIES EXCEPT AS SHOWN ON THIS MAP. THE CONTRACTOR IS REQUIRED TO TAKE PRECAUTIONARY MEASURES TO PROTECT THE UTILITY LINES SHOWN AND ANY OTHER LINES NOT OF RECORD OR NOT SHOWN ON THIS DRAWING.



INDEX MAP
 TRACT N^o 26887
 Scale: 1" = 400'
 P.C. 6089

NO CHARGE FOR CONNECTIONS
Alden Lew

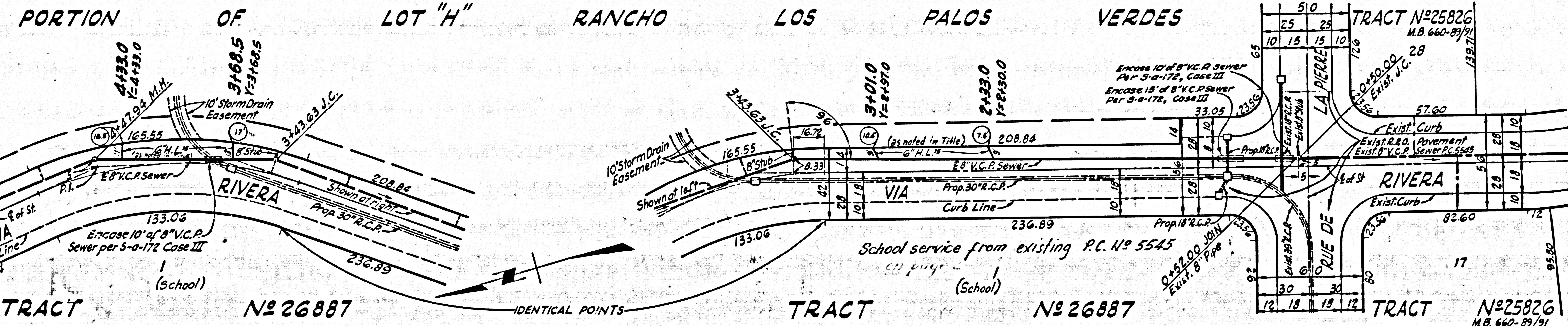
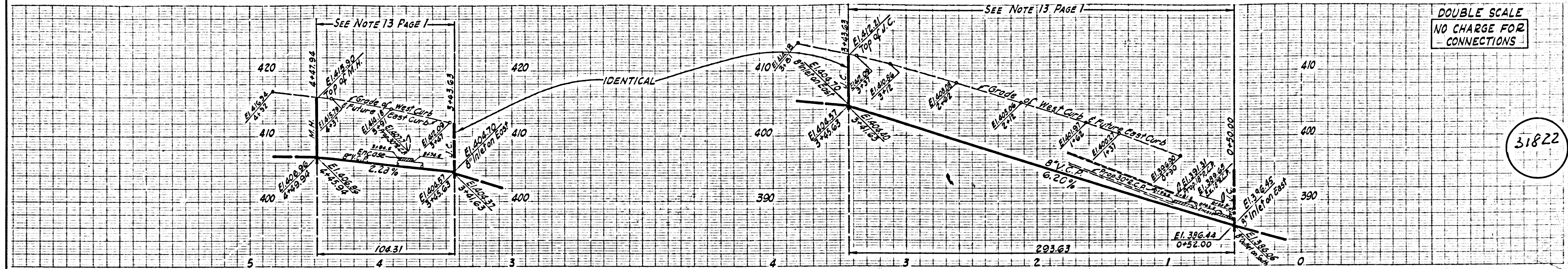
NO CONNECTIONS FOR THE DISPOSAL OF INDUSTRIAL WASTES SHALL BE MADE TO SEWERS SHOWN ON THESE DRAWINGS WITHOUT WRITTEN PERMISSION FROM THE CHIEF ENGINEER AND GENERAL MANAGER OF THE COUNTY SANITATION DISTRICTS.



P.C. 6089 PAGE 2
 DOUBLE SCALE
 NO CHARGE FOR CONNECTIONS
 31821

DOUBLE SCALE
NO CHARGE FOR
CONNECTIONS

31822



DOUBLE SCALE
NO CHARGE FOR
CONNECTIONS

31823

