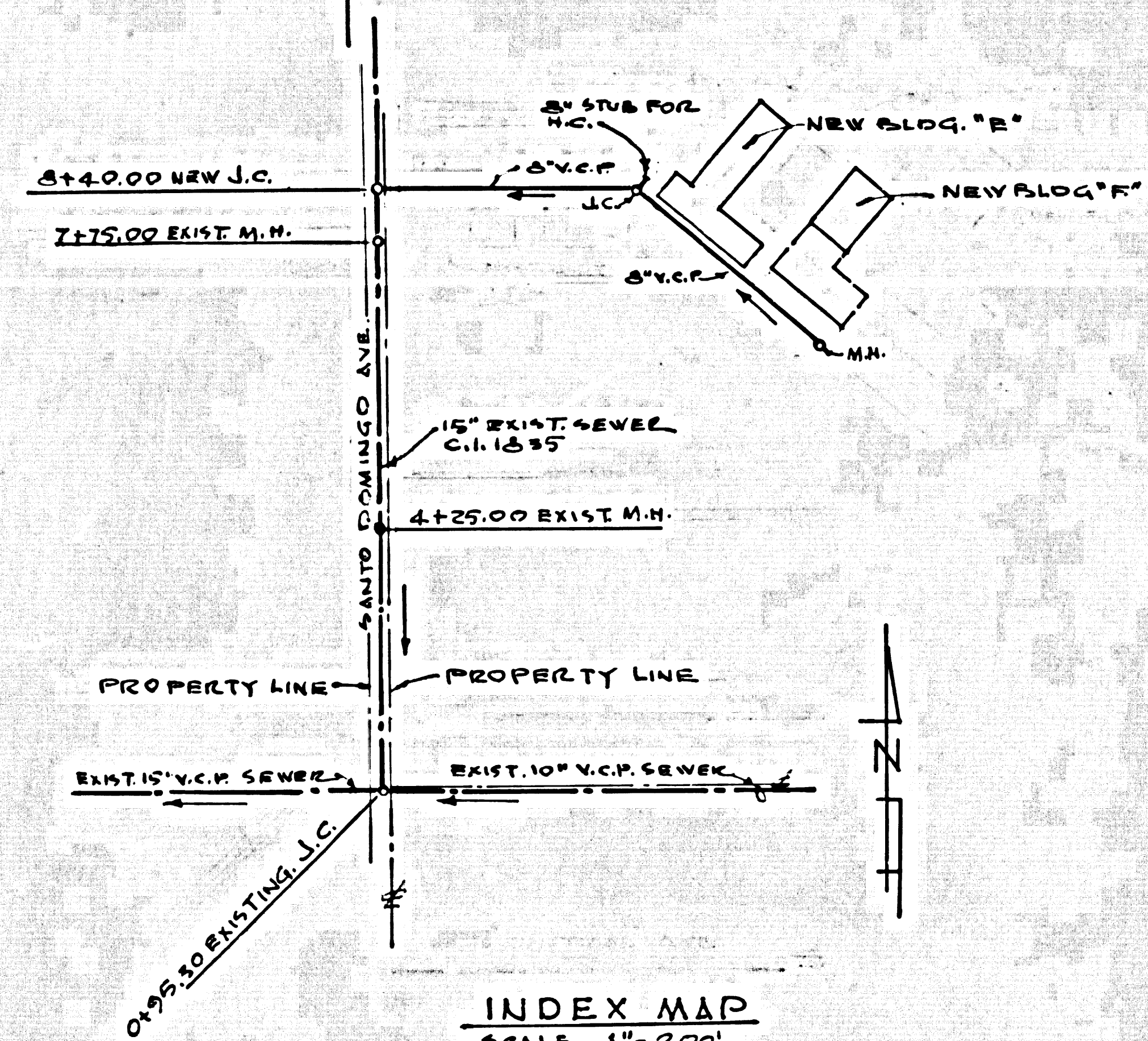


EENCH MARK.

B.M. - K.K. 59 - ELEVATION 508.463
1952 P.C. 1952 PAGE 6
SANTO DOMINGO AVENUE WESTSIDE
650' ± NORTH OF CENTRAL AVENUE
BOAT SPIKE IN N.E. CORNER
CONCRETE DRIVE TO HOUSE NUMBER
1331-1952 ADJUSTMENT



INDEX MAP
SCALE 1" = 200'
P.C. 6095

NO CHARGE
FOR CONNECTIONS
TO EXISTING SEWERS

CITY OF DUARTE BLDG. DIST. NO. 5.02

- NOTES:
1. PROVIDE STAKES ON THE PROPERTY LINE OR PROPERTY LINES PRODUCED AT RIGHT ANGLES TO THE SEWER LINE AT THE CENTER LINE OF EACH MANHOLE.
2. NO REPRESENTATIVE OF THE CITY ENGINEER WILL SURVEY OR LAY OUT ANY PORTION OF THE WORK.
3. THE OWNER OR HIS AUTHORIZED REPRESENTATIVE SHALL FURNISH THE CITY ENGINEER WITH GRADE SHEETS AND STATIONING FOR ALL HOUSE LATERALS AND Y BRANCHES AND SHALL PROVIDE STAKES FOR THEM AT THEIR PROPER LOCATIONS WITH STATIONING PLAINLY MARKED. ANY CHANGE IN LOCATION SHALL BE REQUESTED IN WRITING BY THE OWNER OR HIS REPRESENTATIVE.
4. THE PRIVATE ENGINEER SHALL FURNISH THE HOUSE LATERAL DEPTH AT THE PROPERTY LINE BELOW THE TOP OF CURB ELEVATION FOR EACH HOUSE LATERAL ON THE GRADE SHEET.
5. NO REVISIONS SHALL BE MADE IN THESE PLANS WITHOUT THE APPROVAL OF THE CITY ENGINEER.
6. USE STANDARD MANHOLE FRAMES AND COVERS, S-117-A.
7. USE EXTRA STRENGTH PIPE ALL PIPE TO STANDARD DEPTH.
8. USE CEMENT MORTAR OR "WEDGE-LOCK" OR "SPEED-SEAL" FOR ALL V.C.P. JOINTS PER SPEC. SECS. 34 & 41.
9. RESURFACE ALL TRENCH WITHIN PAVED AREA TO MEET L.A. COUNTY ROAD DEPT. OR CALIF. STATE HIGHWAY REQUIREMENTS IN ACCORDANCE WITH PERMITS.
10. ENCASE FOUR FEET OF SEWER AT POINTS OF INTERFERENCE WITH POLES, CASE III, S-117.
11. MANHOLES SHALL BE BUILT TO SEWER STRUCTURES PER S-117-A. PRECAST CONCRETE MANHOLES PER S-117-B OR S-117-C MAY BE USED AS AN ALTERNATE IN LOCATIONS APPROVED BY THE CITY ENGINEER.
12. ALL MANHOLES SHALL BE BUILT TO MEET THE REQUIREMENTS OF SPEC. SEC. 34.
13. FOR ALLOWABLE LEAKAGE TEST USE FORMULA NO. 1 SPEC. SEC. 34.
14. MANHOLE TOPS IN UNIMPROVED RIGHTS-OF-WAY TO BE LEVEL WITH FINISHED GRADE.
15. THE CONTRACTOR SHALL NOTIFY THE CONSTRUCTION DIVISION BY TELEPHONE, MADISON 9-4747, AT LEAST TWENTY-FOUR HOURS BEFORE STARTING ANY WORK UNDER THIS CONTRACT.

APPROVED: [Signature] DATE: 1/9/62
INDUSTRIAL WASTE DIVISION

PROFILE ALIGNMENT AND GRADE OF P.C. 6095

SANITARY SEWERS PAGE 1

TO BE CONSTRUCTED IN
WESTMINSTER GARDENS
PRIVATE SEWER

PRIVATE CONTRACT NO. 6095

W.S. 46
1 SHEETS; 2 PAGES
SCALE: VERT. 1" = 4'
HORIZ. 1" = 40'
JAN, 1962
PREPARED IN THE OFFICES OF

31810

By: [Signature] REG. C. E. NO. 6874

FOR LEGEND SEE PLAN NO. S-A-64

NOTE: GRADES TO WHICH THIS IMPROVEMENT IS TO BE CONSTRUCTED ARE SHOWN ON PLANS AND PROFILES. GRADE POINTS FOR TOP OF CURBS, CENTER LINE OF STREETS, OR CENTER LINE OF ALLEYS ARE SHOWN BY CIRCLES ON PROFILES. AT ALL POINTS BETWEEN DESIGNATED POINTS THE GRADE SHALL BE ESTABLISHED SO AS TO CONFORM TO A STRAIGHT LINE DRAWN BETWEEN SAID DESIGNATED POINTS. ELEVATIONS ARE IN FEET ABOVE U.S.C. & G.S. SEA LEVEL DATUM OF 1929. THIS DRAWING AND THE DATA HEREON ARE HEREBY MADE A PART OF THE SPECIFICATIONS. WORK SHALL BE CONSTRUCTED ACCORDING TO SPECIFICATIONS ON FILE IN THE OFFICE OF THE CITY ENGINEER AND SHALL BE PROSECUTED ONLY IN THE PRESENCE OF THE CITY ENGINEER. BEFORE WORK CAN BE STARTED THE CONTRACTOR MUST OBTAIN A PERMIT TO EXCAVATE IN CITY STREETS FROM THE L.A. COUNTY ROAD DEPT., DISTRICT OFFICE NO. 7 AND MAKE A DEPOSIT WITH THE COUNTY ENGINEER, ROOM 1234 S. 3RD ST. DUARTE, CALIF. SUFFICIENT TO COVER THE COST OF CONSTRUCTION INSPECTION AND RECORD PLANS. APPROVAL OF THIS PLAN BY THE CITY OF DUARTE DOES NOT CONSTITUTE A REPRESENTATION AS TO THE ACCURACY OF THE LOCATION OF OR THE EXISTENCE OR NON-EXISTENCE OF ANY UNDERGROUND UTILITY PIPE, OR STRUCTURE WITHIN THE LIMITS OF THIS PROJECT. THIS NOTE APPLIES TO ALL PAGES. IF WORK IS TO BE DONE IN A STATE HIGHWAY, A PERMIT MUST BE OBTAINED FROM THE STATE OF CALIFORNIA, DIVISION OF HIGHWAYS, 120 SOUTH SPRING STREET.

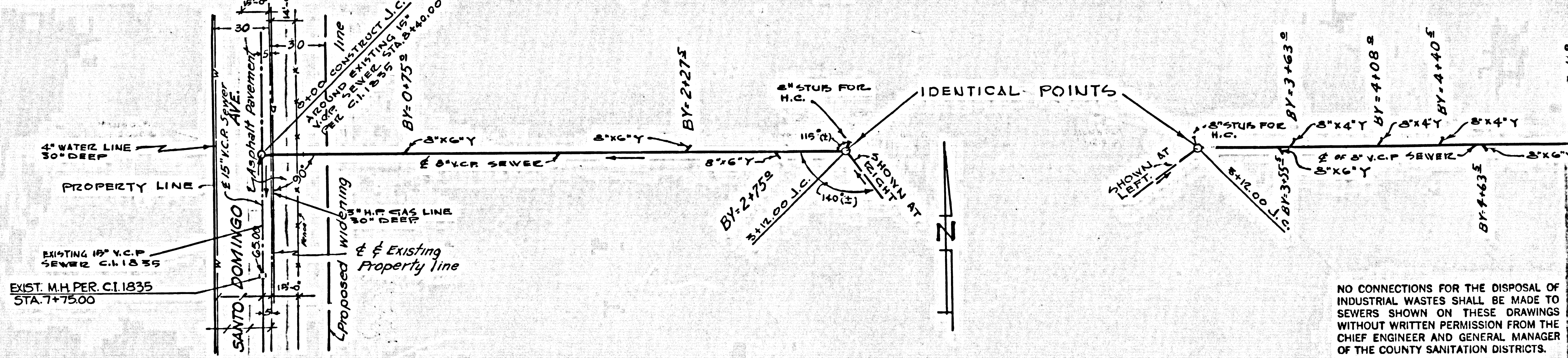
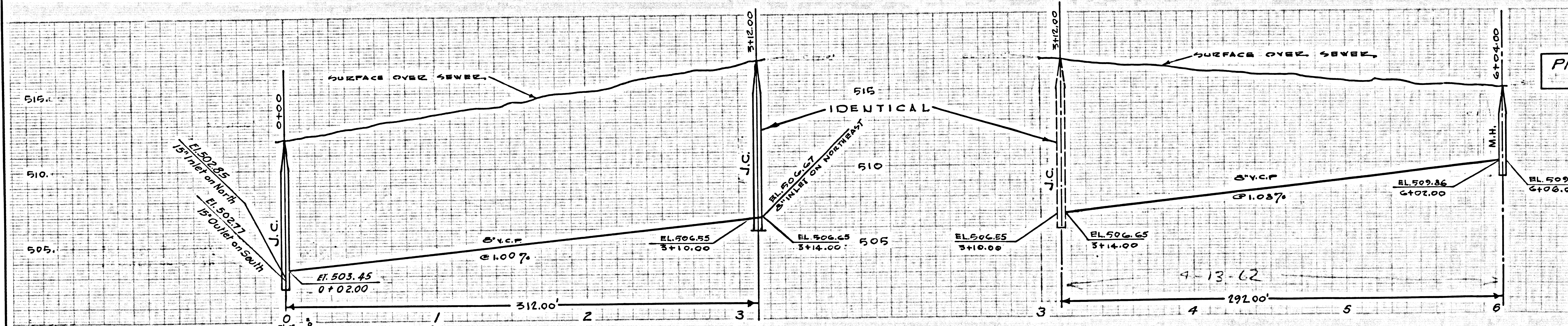
CITY OF DUARTE, CALIFORNIA
APPROVED, JOHN A. LAMBIE, CITY ENGINEER APPROVED, J.D. PEECHUS, CHIEF ENGINEER
[Signatures]
CHECKED BY: [Signature] 1-8-62
OFFICE OF COUNTY ENGINEER, REG. C. E. NO. 3486
SUBMITTED: [Signature] SAN GABRIEL VALLEY REGIONAL ENGINEER

P.C. 6095 PAGE 2

NO CHARGE FOR CONNECTIONS

PRIVATE SEWER

31811



NO CONNECTIONS FOR THE DISPOSAL OF INDUSTRIAL WASTES SHALL BE MADE TO SEWERS SHOWN ON THESE DRAWINGS WITHOUT WRITTEN PERMISSION FROM THE CHIEF ENGINEER AND GENERAL MANAGER OF THE COUNTY SANITATION DISTRICTS.

SEWER LAYOUT table with fields: NAME OF DRAWING, DATE, TRACED BY, CHECKED BY, NAME OF OWNER, JOB NUMBER, SHEET NO.