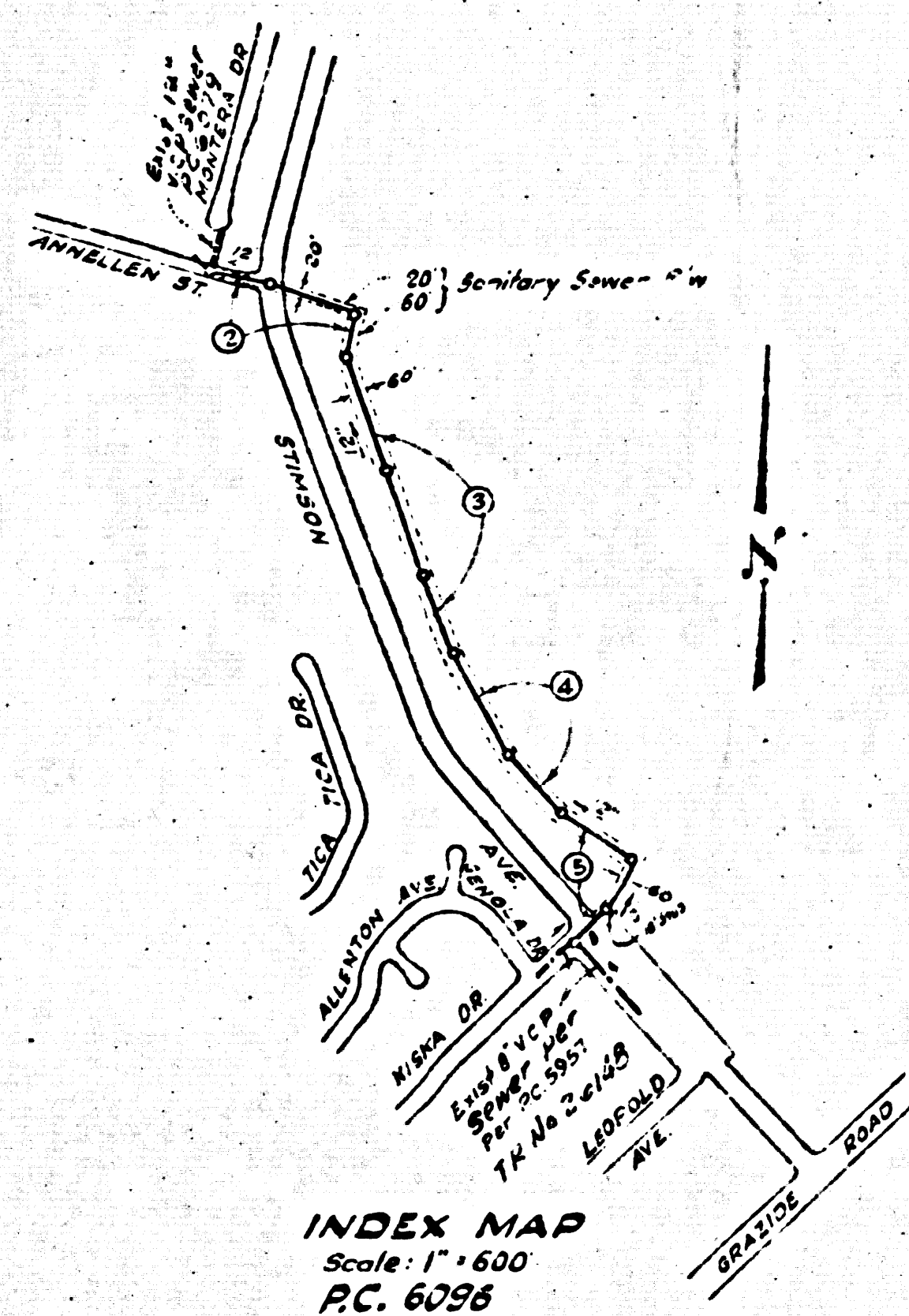


BENCH MARK:
 N.P. S.G. 1623 Elev. 409.311
 Co. Sur. Man in well 14 down at or
 near E. Int. of Hacienda Blvd & Halliburton
 (Formerly Puente Rd) Offerbein 1953



PUENTE BLDG. DIST. NO. 2

- NOTES:**
1. PROVIDE STAKES ON THE PROPERTY LINE OR PROPERTY LINES PRODUCED AT RIGHT ANGLES TO THE SEWER LINE AT THE CENTER LINE OF EACH MANHOLE.
 2. NO REPRESENTATIVE OF THE COUNTY ENGINEER WILL SURVEY OR LAY OUT ANY PORTION OF THE WORK.
 3. THE OWNER OR HIS AUTHORIZED REPRESENTATIVE SHALL FURNISH THE COUNTY ENGINEER WITH GRADE SHEETS AND STATIONING FOR ALL HOUSE LATERALS AND Y BRANCHES AND SHALL PROVIDE STAKES FOR THEM AT THEIR PROPER LOCATIONS WITH VARYING PLAINLY MARKED. ANY CHANGE IN LOCATION SHALL BE REQUESTED IN WRITING BY THE OWNER OR HIS REPRESENTATIVE.
 4. THE PRIVATE ENGINEER SHALL FURNISH THE HOUSE LATERAL DEPTH AT THE PROPERTY LINE BELOW THE TOP OF CURB ELEVATION FOR EACH HOUSE LATERAL ON THE GRADE SHEET.
 5. NO REVISIONS SHALL BE MADE IN THESE PLANS WITHOUT THE APPROVAL OF THE COUNTY ENGINEER.
 6. USE STANDARD MANHOLE FRAMES AND COVERS S-1113.
 7. USE EXTRA STRENGTH PIPE. ALL PIPE STANDARD DEPTH FIVE FEET AS NOTED.
 8. USE MECHANICAL COMPRESSION JOINTS FOR ALL V.C.P. JOINTS PER SPECS., SECS. 38, 48 & 49.
 9. RESURFACE ALL TRINCH WITHIN PAVED AREA TO MEET L.A. COUNTY ROAD DEPT. OR U.S. STATE HIGHWAY REQUIREMENTS IN ACCORDANCE WITH PERMITS.
 10. IF A POWER POLE IS WITHIN THREE FEET OF THE SEWER, THE SEWER SHALL BE ENCASED PER S-4-172, CASE III, TWO FEET ON EITHER SIDE FROM THE POINT OF INTERFERENCE.
 11. HOUSE LATERALS TO BE CONSTRUCTED WITH MANHOLE AT PROPERTY LINE 6 FEET BELOW CURB GRADE EXCEPT AS NOTED.
 12. MANHOLES SHALL BE BRICK SEWER STRUCTURES PER S-1104. PRECAST CONCRETE MANHOLES PER S-1104-13 MAY BE USED AS AN ALTERNATE IN LOCATIONS APPROVED BY THE COUNTY ENGINEER.
 13. FOR ALLOWABLE LEAKAGE TEST USE FORMULA NO. 1, SPECS. SEC. 54.
 14. MANHOLE TOPS IN UNIMPROVED RIGHTS-OF-WAY TO BE SIX INCHES ABOVE FINISHED GRADE.
 15. THE CONTRACTOR SHALL NOTIFY THE CONSTRUCTION DIVISION BY TELEPHONE, MADEIRA 3 4121, AT LEAST TWENTY FOUR HOURS BEFORE STARTING ANY WORK UNDER THIS CONTRACT.
 16. STANDARD SPECIFICATIONS DATED MAY 25, 1962 SHALL APPLY IN THE CONSTRUCTION OF THIS PROJECT.
 17. SEWERS IN FILLED GROUND:
 - a. NO CONSTRUCTION WILL BE PERMITTED IN FILLED AREA UNLESS A WRITABLE CERTIFICATION IS SUBMITTED TO THE CONSTRUCTION DIVISION OF THE COUNTY ENGINEER'S DEPARTMENT THAT RELATIVE CORROSION IS GREATER THAN 80%.
 - b. IF CORROSION IS LESS THAN 80% THE SEWER MUST BE CRADLED AS SHOWN IN THE PLANS PER S-1104 OR A SPECIAL BASE COURSE PER S-4-170 CASE III, SPECIAL MANHOLE BASES MUST BE INSTALLED PER S-1104-13 AS INDICATED ON THE PLANS.
 - c. IF CORROSION IS GREATER THAN 90% NEITHER CRADLING NOR SPECIAL MANHOLE BASES WILL BE REQUIRED.
 18. ALL TIES TO BE IN PLACE BEFORE SEWERS ARE CONSTRUCTED.
 19. IF DURING THE COURSE OF CONSTRUCTION IT IS DETERMINED THAT THERE IS LESS THAN FOUR FEET OF COVER OVER THE TOP OF A MAIN LINE OR HOUSE LATERAL V.C.P. SEWER WHICH IS NOT INDICATED ON THE PLANS, THE PIPE SHALL BE ENCASED PER S-4-172, CASE III, UNLESS OTHERWISE APPROVED BY THE COUNTY ENGINEER.
 20. LATERALS SHALL BE CONSTRUCTED BY A STRAIGHT ALIGNMENT AT RIGHT ANGLES FROM THE MAIN LINE SEWER EXCEPT AS SHOWN ON THE PLANS. HOUSE LATERALS FROM CHIMNEYS SHALL NOT HAVE AN ANGLE OF LESS THAN 45° WITH THE MAIN LINE SEWERS, ANY CHANGE IN ALIGNMENT SHALL BE REQUESTED IN WRITING BY THE PRIVATE ENGINEER.
 21. ALL STATE AND LOCAL TRINCH SAFETY ORDERS WILL BE RIGIDLY ENFORCED.

COLLECT CHARGES AS INDICATED
 S. S. STELLER
 DOUBLE SCALE VERTICALLY

PROFILE ALIGNMENT AND GRADE OF P.C. 6096
SANITARY SEWERS PAGE 1
 TO BE CONSTRUCTED IN J/N 035735

R/W FOR TRACT N° 26148

PRIVATE CONTRACT NO. 6096

W.S. 38
 3 SHEETS; 5 PAGES

SCALE: HORIZ. 1" = 40' VERT. 1" = 4'

APRIL, 1962

PREPARED IN THE OFFICES OF
AMCO ENGINEERS
 8944 W. OLYMPIC BLVD.
 BEVERLY HILLS, CALIF.

By: *John M. Arango* 2-19-62
 REG. C. E. NO. 11467

FOR LEGEND SEE PLAN NO. S-A-64

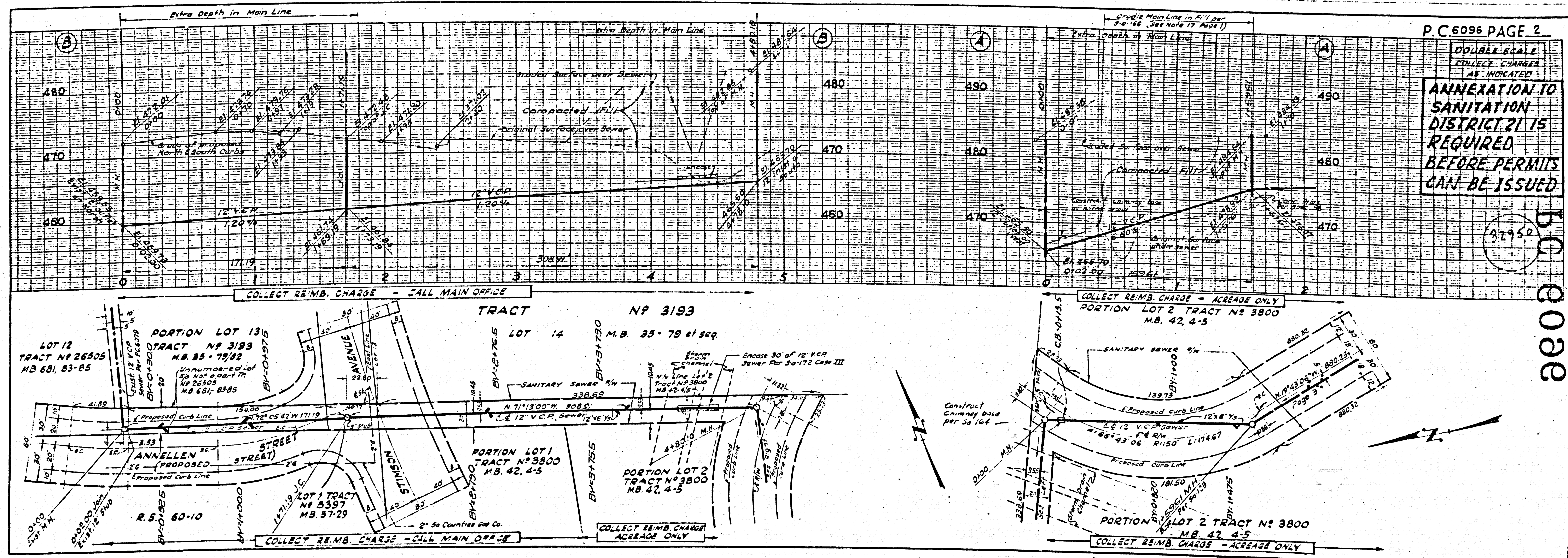
NOTE:
 GRADES TO WHICH THIS IMPROVEMENT IS TO BE CONSTRUCTED ARE SHOWN ON P. 115 AND 116. THESE GRADE POINTS, POINTS BETWEEN DESIGNATED POINTS OF CENTER LINE OF ALLEYS AND SHOWN BY 0.125' ON PROFILES AT ALL BETWEEN SAID DESIGNATED POINTS. THE GRADE SHALL BE ESTABLISHED SO AS TO CONFORM TO A STRAIGHT LINE DRAWN THROUGH SAID DESIGNATED POINTS.
 ELEVATIONS ARE IN FEET ABOVE U.S.C. & G.S. SEA LEVEL DATUM OF 1929.
 THIS DRAWING AND THE DATA HEREON ARE HEREBY MADE A PART OF THE SPECIFICATIONS.
 WORK SHALL BE CONSTRUCTED ACCORDING TO SPECIFICATIONS ON FILE IN THE OFFICE OF THE COUNTY ENGINEER AND SHALL BE PROTECTED ONLY IN THE PRESENCE OF THE COUNTY ENGINEER.
 BEFORE WORK CAN BE STOPPED THE CONTRACTOR MUST OBTAIN A PERMIT TO EXCAVATE IN COUNTY STREETS FROM THE L.A. COUNTY ROAD DEPT. DISTRICT OFFICE NO. 1 AND PAY A FEE TO THE COUNTY ENGINEER ROOM NO. 108 IN SECOND STREET, LOS ANGELES. SUFFICIENT TO COVER THE COST OF CONSTRUCTION INSPECTION AND RECORD PLANS.
 APPROVAL OF THIS PLAN BY THE COUNTY OF LOS ANGELES DOES NOT CONSTITUTE A REPRESENTATION AS TO THE ACCURACY OF THE LOCATION OF OR THE EXISTENCE OR NON-EXISTENCE OF ANY UNDERGROUND UTILITY PIPE, OF STAKE OR WORK IS TO BE DONE IN A STATE HIGHWAY A PERMIT MUST BE OBTAINED FROM THE STATE OF CALIFORNIA DIVISION OF HIGHWAYS 100 SOUTH SPRING STREET.

COUNTY OF LOS ANGELES, CALIFORNIA

APPROVED, JOHN A. LAMBIE, COUNTY ENGINEER
 APPROVED, J.D. PARKINSON, CHIEF ENGINEER
 ASST. SANITATION ENGINEER
 OFFICE ENGINEER
 CHECKED BY: *John Duda* 11-18-62
 OFFICE OF COUNTY ENGINEER R.F.S. C. E. NO. 3466

SUBMITTED *John Duda* 11-15-62
 SAN DINAS REGIONAL ENGINEER

B.C. 6096
 32949



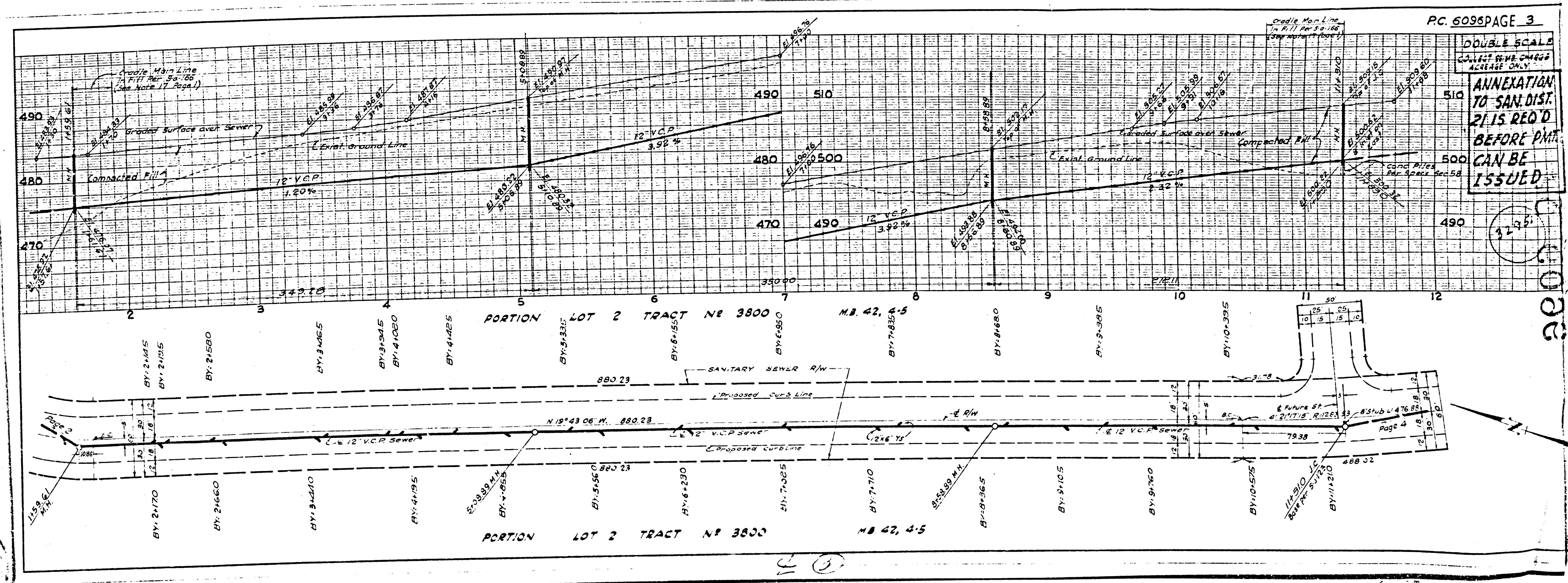
P.C. 6096 PAGE 2
 DOUBLE SCALE
 COLLECT CHARGES
 AS INDICATED
**ANNEXATION TO
 SANITATION
 DISTRICT 21 IS
 REQUIRED
 BEFORE PERMITS
 CAN BE ISSUED**

HC
 6096

②

DOUBLE SCALE
COLLECT REVENUE CHIEFS
ACCESS ONLY

ANNEXATION
TO SAN. DIST.
PL IS REQ'D
BEFORE PMT.
CAN BE
ISSUED



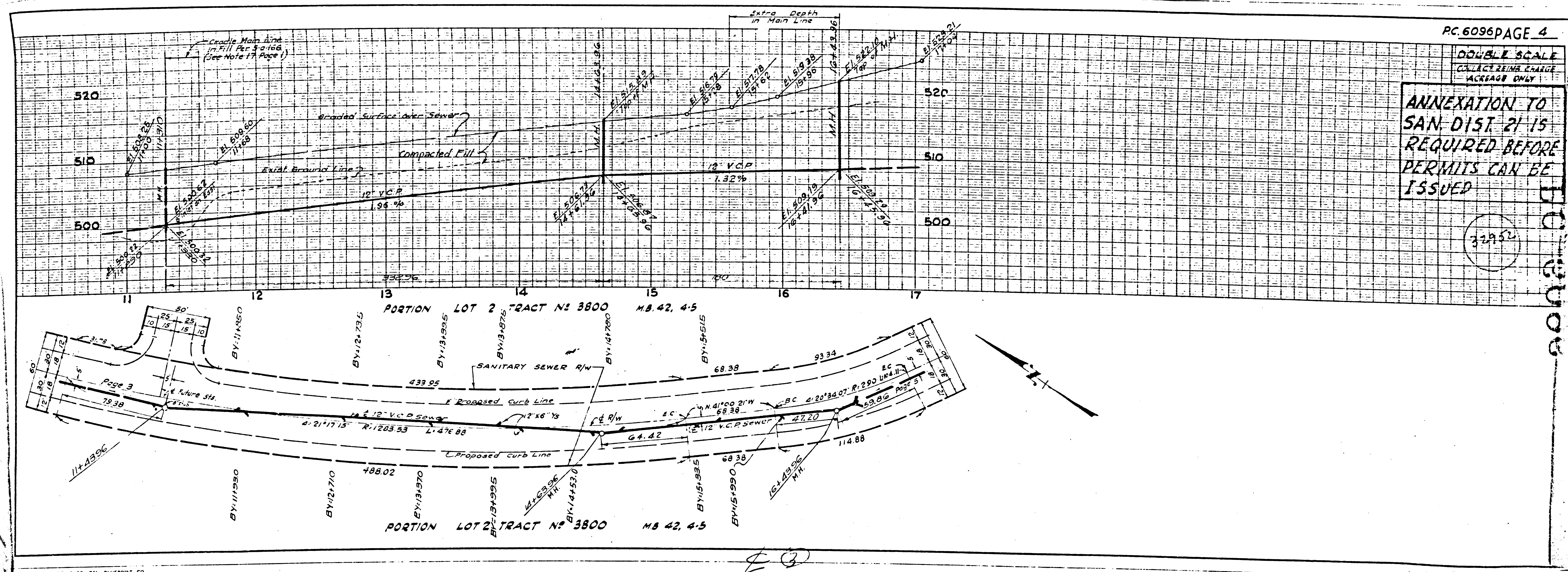
200

①

DOUBLE SCALE
COLLECTING CHARGE
INCREASE ONLY

ANNEXATION TO
SAN. DIST. 21 IS
REQUIRED BEFORE
PERMITS CAN BE
ISSUED

32952



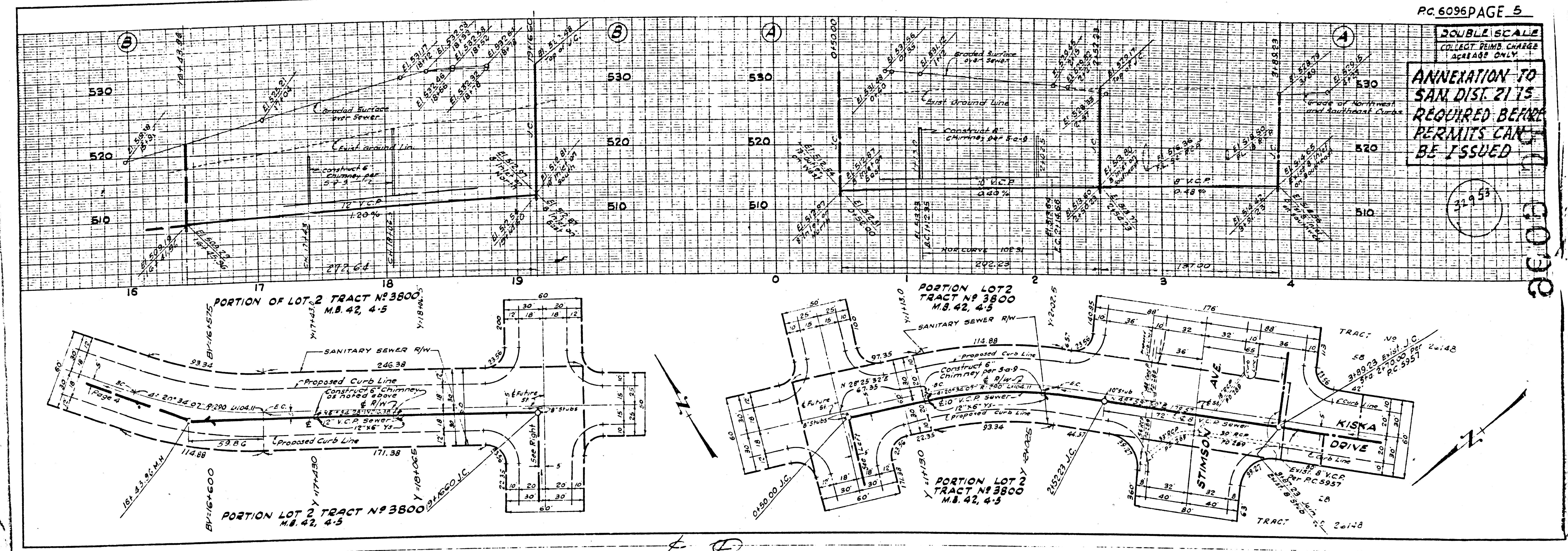
M

M5

DOUBLE SCALE
COLLECT PERMITS CHARGE
ACROSS ONLY

ANNEXATION TO
SAN. DIST. 2175
REQUIRED BEFORE
PERMITS CAN
BE ISSUED

31953



31953