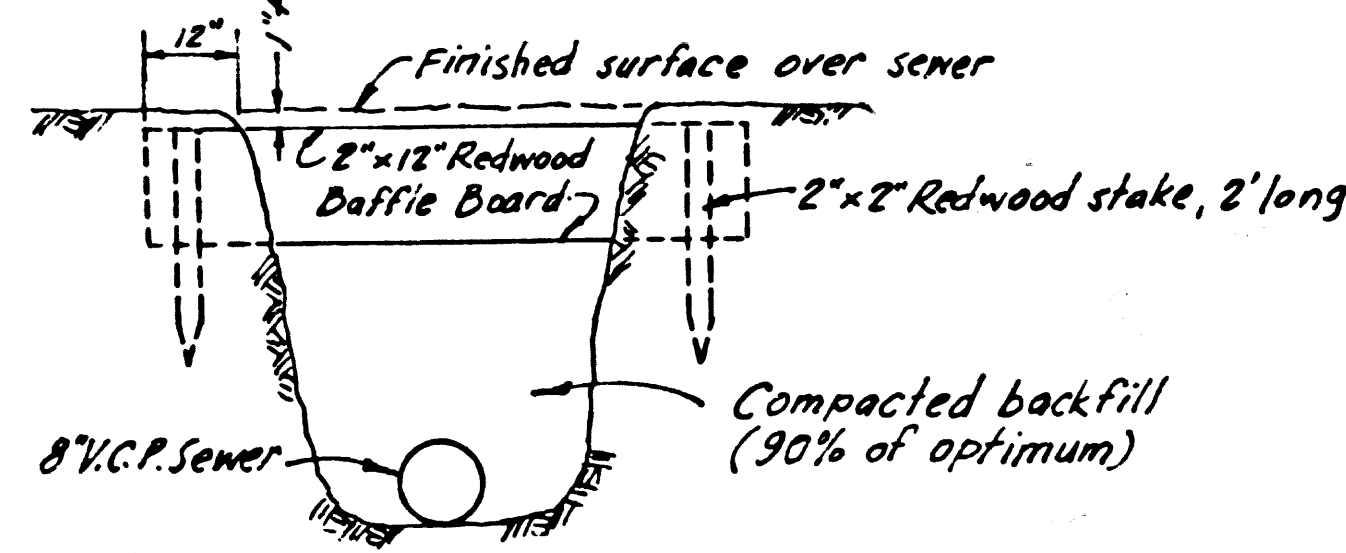


BENCH MARK: SG-1042  
 Spk & L. at center of curb return at  
 NW Corner of Valley Boulevard  
 and Glendora Avenue (Mkd P.S. 6)  
 Elevation 328.599 Puente Quad. 1955



BAFFLE BOARD DETAIL  
 NO SCALE

- NOTES:
1. Each end of baffle board will extend one foot into undisturbed ground.
  2. Baffle boards shall be spaced so that the top of the lower board shall be level with the bottom of the next higher board.
  3. The upper layer of backfill to be one foot minimum of top soil. Top soil shall be tamped in place and planted with Perennials of same type as those on adjacent slopes or as required in accordance with grading plan. Soil shall be adequately watered until growth is restored.

NO CONNECTIONS FOR THE DISPOSAL OF INDUSTRIAL WASTES SHALL BE MADE TO SEWERS SHOWN ON THESE DRAWINGS WITHOUT WRITTEN PERMISSION FROM THE CHIEF ENGINEER AND GENERAL MANAGER OF THE COUNTY SANITATION DISTRICTS.

COLLECT CHARGES AS INDICATED  
*B.F. Worling 3-8-62*

LA PUENTE BLDG. DIST. NO. 2.02

TO BE CONSTRUCTED IN

TRACT NO. 25346

PRIVATE CONTRACT NO. 6097

W.S. 38

2 SHEETS: 4 PAGES

SCALE: VERT. 1"=4' FEBRUARY, 1962

PREPARED IN THE OFFICES OF  
 BROWN ENGINEERING  
 7632 COMMONWEALTH AVENUE  
 BUENA PARK, CALIFORNIA

By: *George D. Stinger*  
 REG. C. E. NO. 9645

FOR LEGEND SEE PLAN NO. S-A-64

NOTE:  
 GRADES TO WHICH THIS IMPROVEMENT IS TO BE CONSTRUCTED ARE SHOWN ON PLANS AND PROFILES. GRADE POINTS FOR TOP OF CURBS, CENTER LINE OF STREETS OR CENTER LINE OF ALLEYS ARE SHOWN BY CIRCLES ON PROFILES. AT ALL POINTS BETWEEN DESIGNATED POINTS THE GRADE SHALL BE ESTABLISHED SO AS TO CONFORM TO A STRAIGHT LINE DRAWN BETWEEN SAID DESIGNATED POINTS.  
 ELEVATIONS ARE IN FEET ABOVE U.S.C. & G.S. SEA LEVEL DATUM OF 1929.  
 THIS DRAWING AND THE DATA HEREON ARE HEREBY MADE A PART OF THE SPECIFICATIONS.  
 WORK SHALL BE CONSTRUCTED ACCORDING TO SPECIFICATIONS ON FILE IN THE OFFICE OF THE COUNTY ENGINEER AND SHALL BE PROSECUTED ONLY IN THE PRESENCE OF THE COUNTY ENGINEER.  
 BEFORE WORK CAN BE STARTED, THE CONTRACTOR MUST OBTAIN A PERMIT TO EXCAVATE IN COUNTY STREETS FROM THE L.A. COUNTY ROAD DEPT., DISTRICT OFFICE NO. 1 AND PAY A FEE TO THE CITY OF LA PUENTE, 15917 E. MAIN ST., SUFFICIENT TO COVER THE COST OF CONSTRUCTION INSPECTION AND RECORD PLANS.  
 APPROVAL OF THIS PLAN BY THE COUNTY OF LOS ANGELES DOES NOT CONSTITUTE A REPRESENTATION AS TO THE ACCURACY OF THE LOCATION OF OR THE EXISTENCE OR NON-EXISTENCE OF ANY UNDERGROUND UTILITY PIPE, OR STRUCTURE WITHIN THE LIMITS OF THIS PROJECT. THIS NOTE APPLIES TO ALL PAGES.  
 IF WORK IS TO BE DONE IN A STATE HIGHWAY, A PERMIT MUST BE OBTAINED FROM THE STATE OF CALIFORNIA, DIVISION OF HIGHWAYS, 120 SOUTH SPRING STREET.

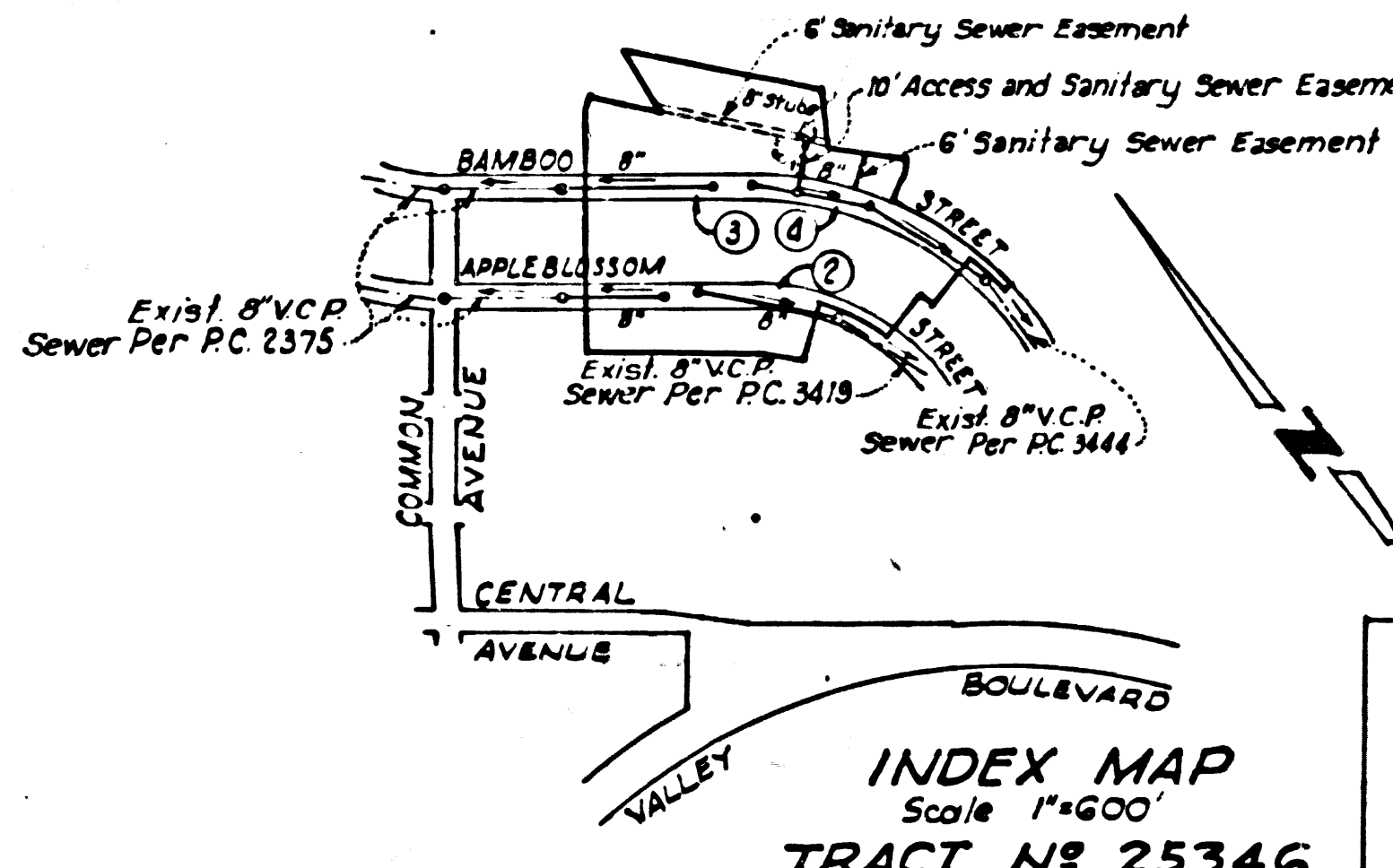
CITY OF LA PUENTE, CALIFORNIA

APPROVED, JOHN A. LAMBIE, CITY ENGINEER APPROVED, J.D. PARKHURST, CHIEF ENGINEER

BY: *Robert E. L...* 457, SANITATION ENGINEER BY: *J. J. ...* OFFICE ENGINEER

CHECKED BY: *W. O. ...* 3-8-62  
 OFFICE OF CITY ENGINEER, REG. C. E. NO. 9466

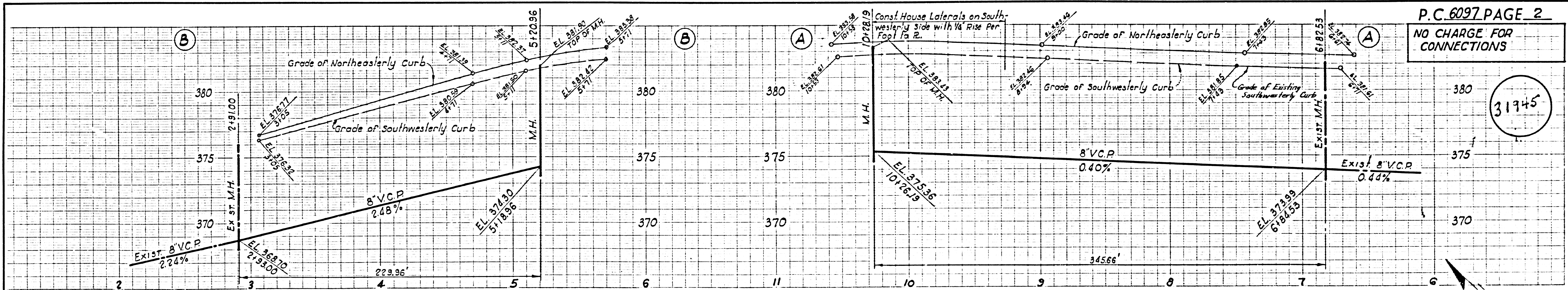
SUBMITTED: *W.C. ...* 3-8-62  
 SAN DIMAS REGIONAL ENGINEER



APPROVED:  
*William ...* 3-8-62  
 CITY MANAGER

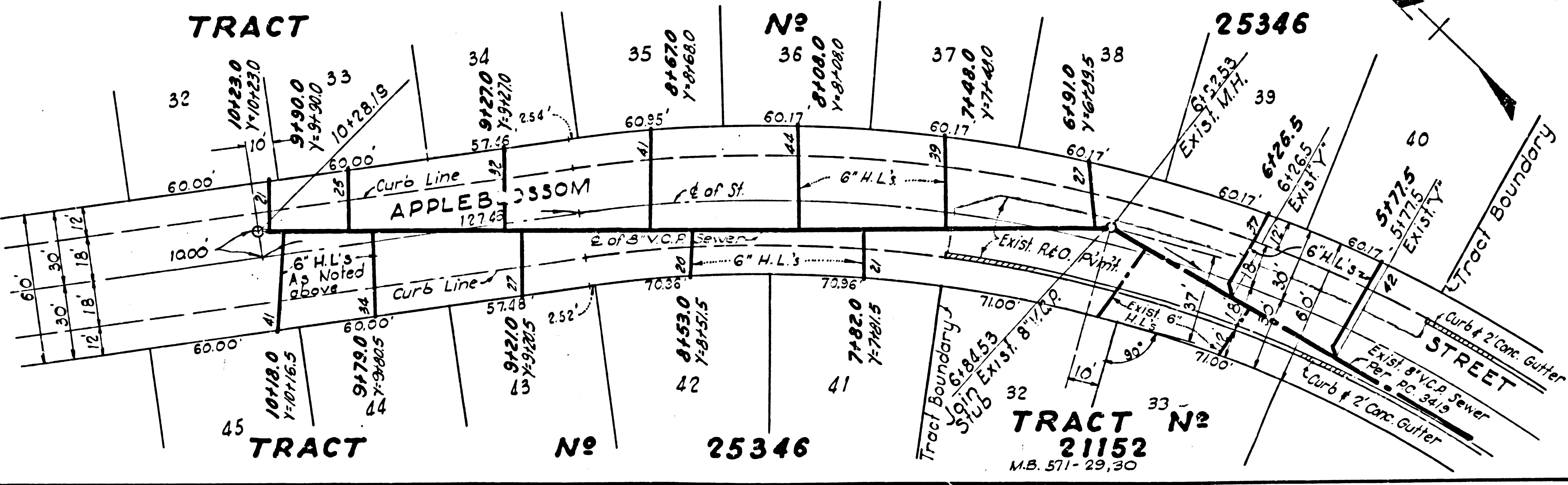
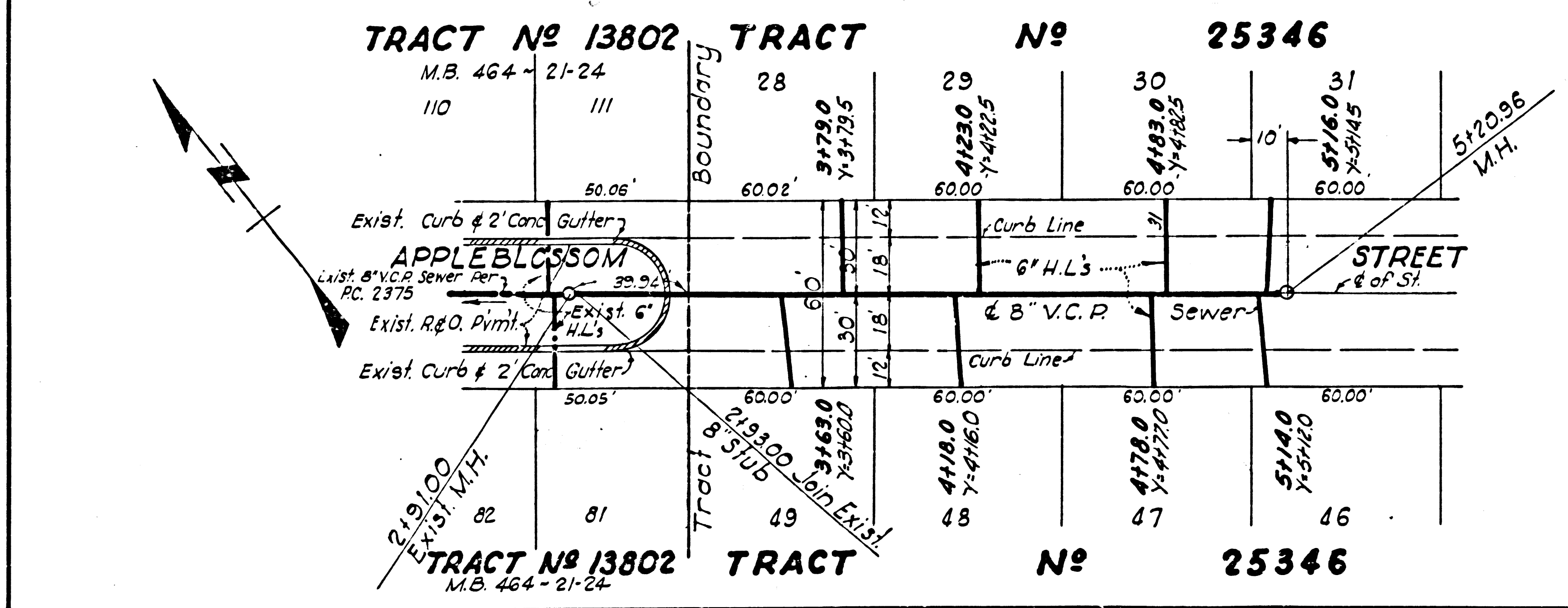
31944

31944

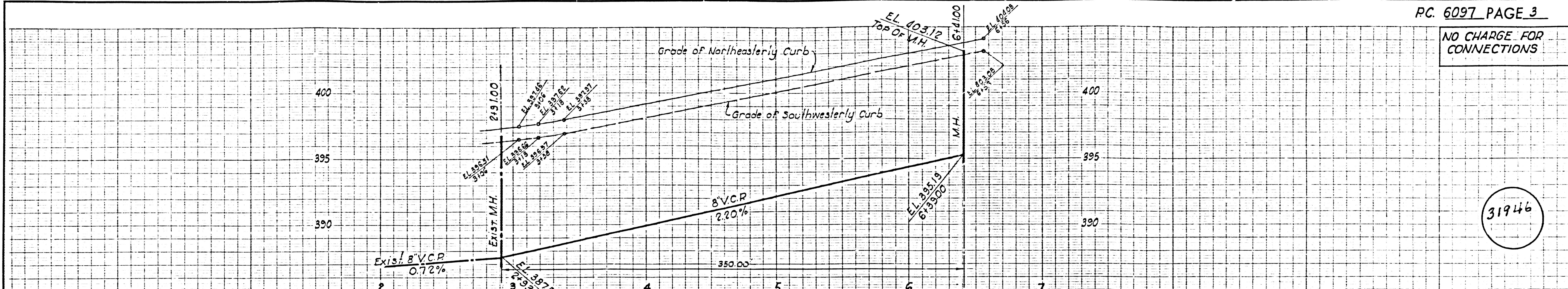


P.C. 6097 PAGE 2  
 NO CHARGE FOR CONNECTIONS

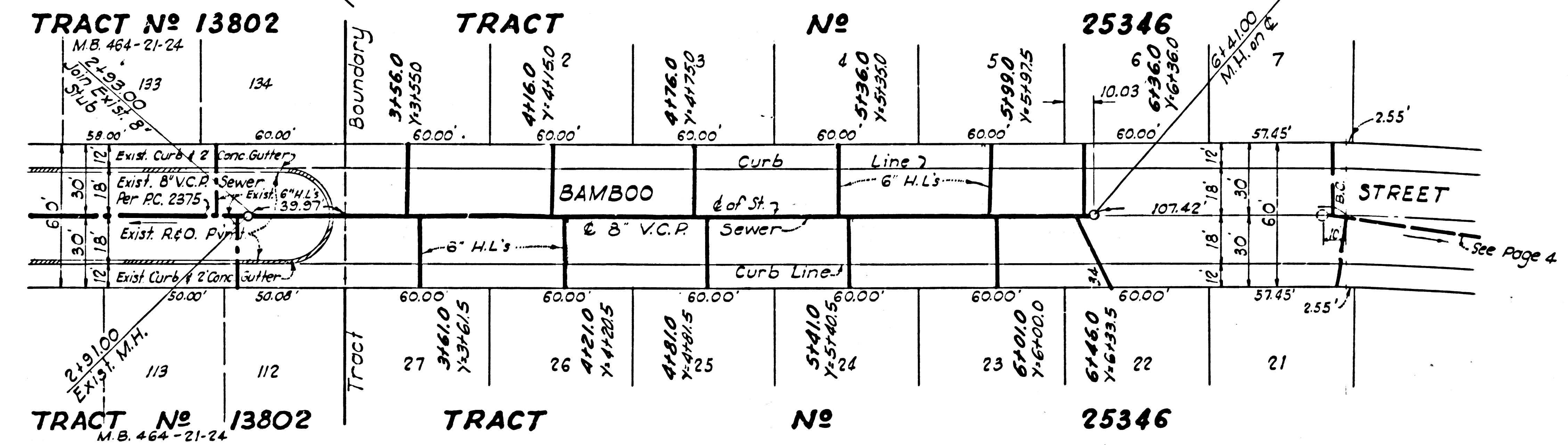
31945



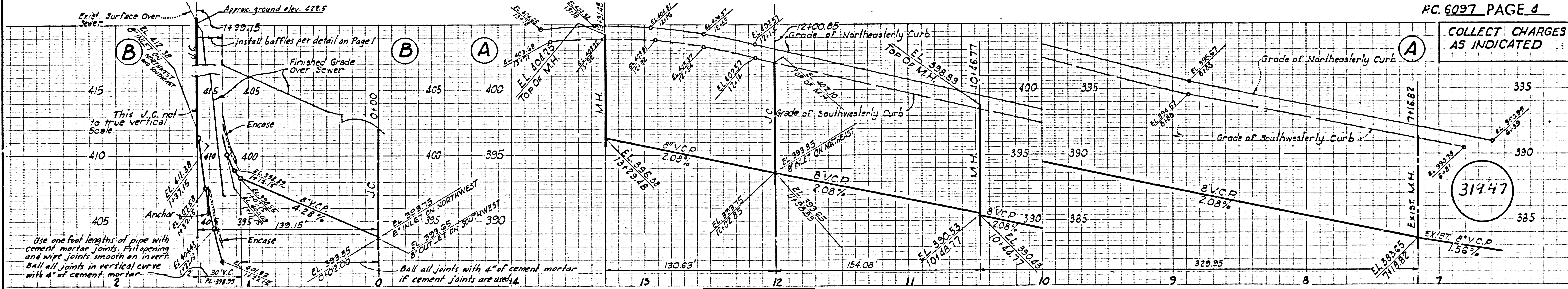
NO CHARGE FOR CONNECTIONS



31946



COLLECT CHARGES AS INDICATED



31947

