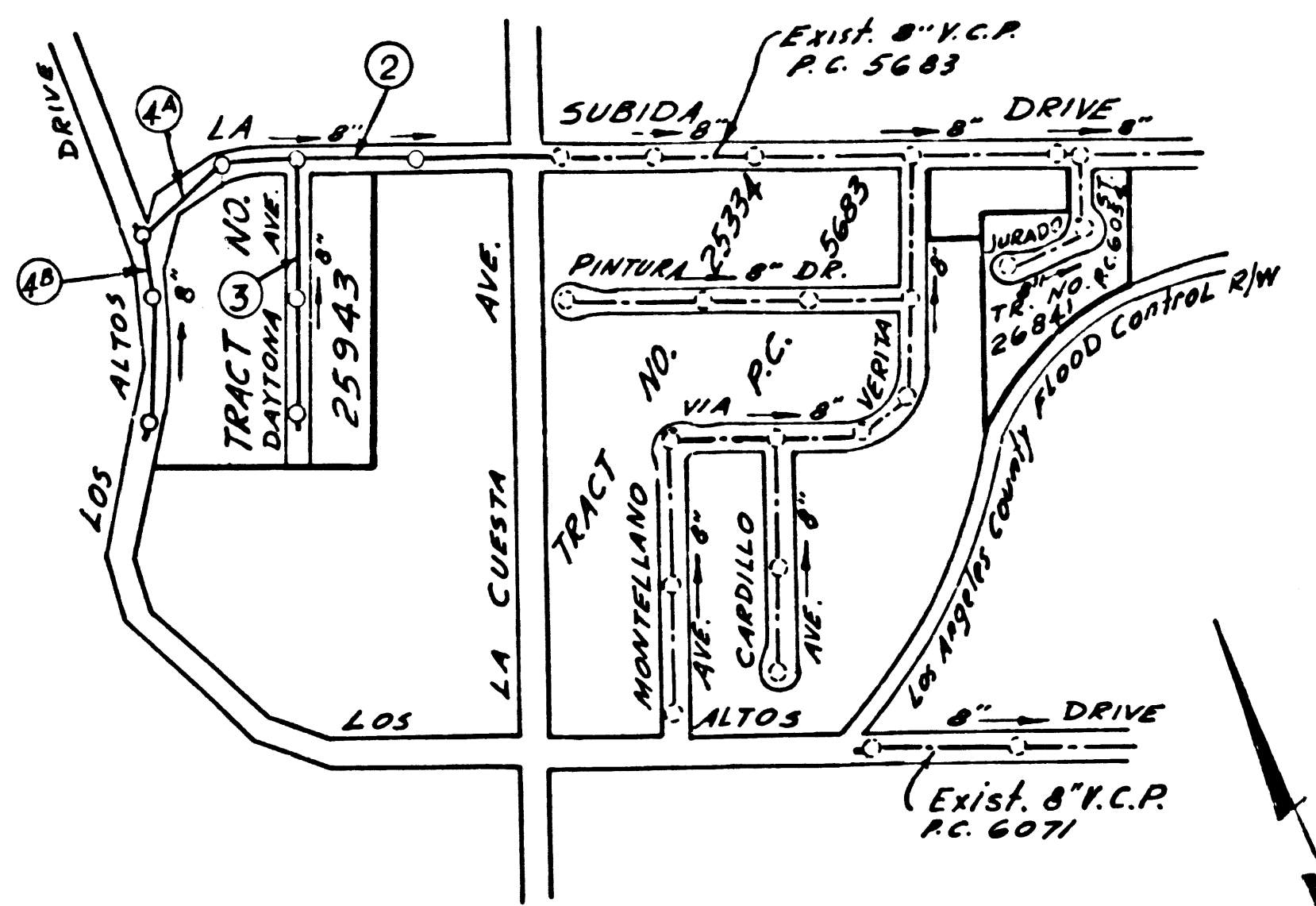


PUENTE BLDG. DIST. NO. 2

PROFILE ALIGNMENT AND GRADE OF P.C. 6098
 SANITARY SEWERS PAGE 1
 TO BE CONSTRUCTED IN J.N. 0357.36
 TRACT NO. 25943

PRIVATE CONTRACT NO. 6098

W.S. 37
 2 SHEETS; 4 PAGES
 SCALE: VERT. 1"=4'
 HORIZ. 1"=40'
 MARCH, 1962
 PREPARED IN THE OFFICES OF
 KEMMERER ENGR. CO. INC.
 BY: Robert R. Flores
 REG. C. E. NO. 11349



INDEX MAP
 TRACT NO. 25943
 P.C. 6098 SCALE: 1"=500'

NOTE:
 THE EXISTENCE AND APPROXIMATE LOCATION OF UNDERGROUND UTILITIES OR STRUCTURES SHOWN ON THESE PLANS WERE DETERMINED BY A SEARCH OF THE AVAILABLE PUBLIC RECORDS TO THE BEST OF OUR KNOWLEDGE THERE ARE NO EXISTING UNDERGROUND UTILITIES OR STRUCTURES EXCEPT AS SHOWN ON THIS PLAN.
 THE CONTRACTOR IS REQUIRED TO TAKE DUE PRECAUTIONARY MEASURES TO PROTECT THE UTILITIES OR STRUCTURES SHOWN AND ANY OTHER UTILITIES OR STRUCTURES AT THE SITE. IT SHALL BE THE CONTRACTOR'S RESPONSIBILITY TO NOTIFY THE OWNERS OF THE UTILITIES OR STRUCTURES CONCERNED BEFORE STARTING WORK.

- NOTES:
- PROVIDE STAKES ON THE PROPERTY LINE OR PROPERTY LINES PRODUCED AT RIGHT ANGLES TO THE SEWER LINE AT THE CENTER LINE OF EACH MANHOLE.
 - NO REPRESENTATIVE OF THE COUNTY ENGINEER WILL SURVEY OR LAY OUT ANY PORTION OF THE WORK.
 - THE OWNER OR HIS AUTHORIZED REPRESENTATIVE SHALL FURNISH THE COUNTY ENGINEER WITH GRADE SHEETS AND STATIONING FOR ALL HOUSE LATERALS AND Y BRANCHES AND SHALL PROVIDE STAKES FOR THEM AT THEIR PROPER LOCATIONS WITH STATING PLAINLY MARKED. ANY CHANGE IN LOCATION SHALL BE REQUESTED IN WRITING BY THE OWNER OR HIS REPRESENTATIVE.
 - THE PRIVATE ENGINEER SHALL FURNISH THE HOUSE LATERAL DEPTH AT THE PROPERTY LINE BELOW THE TOP OF CURB ELEVATION FOR EACH HOUSE LATERAL ON THE GRADE SHEET.
 - NO REVISIONS SHALL BE MADE IN THESE PLANS WITHOUT THE APPROVAL OF THE COUNTY ENGINEER.
 - USE STANDARD MANHOLE FRAMES AND COVERS, S=117.
 - USE EXTRA STRENGTH PIPE. ALL PIPE IS STANDARD DEPTH EXCEPT AS NOTED.
 - USE CEMENT MORTAR OR "WEDGE-LOCK" OR "SPEED-SEAL" FOR ALL T.C.P. JOINTS PER SPECS. SECS. 16 & 41.
 - RESURFACE ALL TRENCH WITHIN PAVED AREA TO MEET L.A. COUNTY ROAD DEPT. OR CALIF. STATE HIGHWAY REQUIREMENTS IN ACCORDANCE WITH PERMITS.
 - ENCASE FOUR FEET OF SEWER AT POINTS OF INTERFERENCE WITH POLE, CASE III, S=112.
 - HOUSE LATERALS TO BE CONSTRUCTED WITH INVERTS AT PROPERTY LINE 6 FEET BELOW CURB GRADE EXCEPT AS NOTED.
 - ALL MANHOLES SHALL BE BRICK SEWER STRUCTURES, S=104. OF PRECAST CONCRETE MANHOLES PER S-4-115 PER S-4-115 MAY BE USED AS AN ALTERNATE IN LOCATIONS APPROVED BY THE COUNTY ENGINEER.
 - FOR ALLOWABLE LEAKAGE TEST USE FORMULA NO. 1, SPEC. 34.
 - MANHOLE TOPS IN UNIMPROVED RIGHTS-OF-WAY TO BE SIX INCHES ABOVE FINISHED GRADE.
 - THE CONTRACTOR SHALL NOTIFY THE CONSTRUCTION DIVISION BY TELEPHONE, MADISON 5-4147, AT LEAST TWENTY-FOUR HOURS BEFORE STARTING ANY WORK UNDER THIS CONTRACT.
 - STANDARD SPECIFICATIONS DATED OCT. 25, 1961 APPLY IN THE CONSTRUCTION OF THIS PROJECT.
 - ON LOTS WITH STATION SHOWN IN CIRCLE THE HOUSE LATERAL SHALL NOT BE CONSTRUCTED UPSTREAM OF THAT STATION.

NO CONNECTIONS FOR THE DISPOSAL OF INDUSTRIAL WASTES SHALL BE MADE TO SEWERS SHOWN ON THESE DRAWINGS WITHOUT WRITTEN PERMISSION FROM THE CHIEF ENGINEER AND GENERAL MANAGER OF THE COUNTY SANITATION DISTRICTS.

BENCH MARK
 S.G. 1609- Fd. L.F.B.M. In S.W. Cor of
 War Box @ N.E. Cor. of La Cuesta Ave.
 of La Subida Dr. 227' N. 231' E. of
 Int. Md. "BM 12"
 ELEV. 563.121 WHITTIER QUAD 1355

DOUBLE VERTICAL SCALE

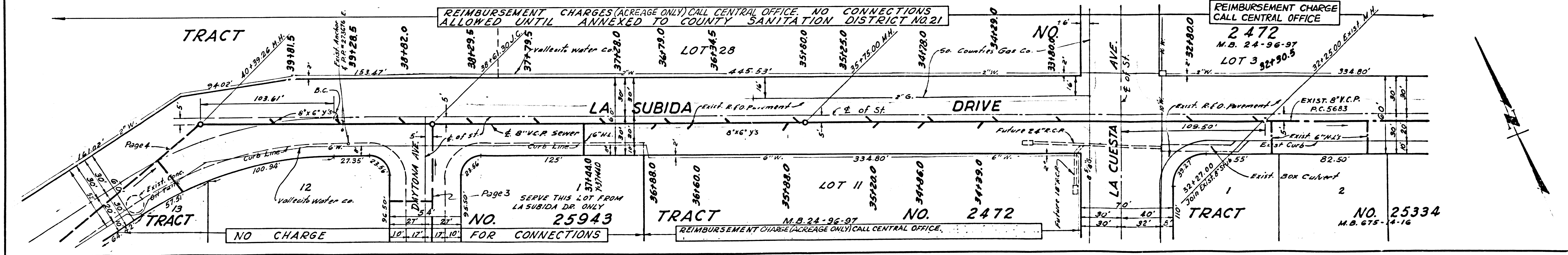
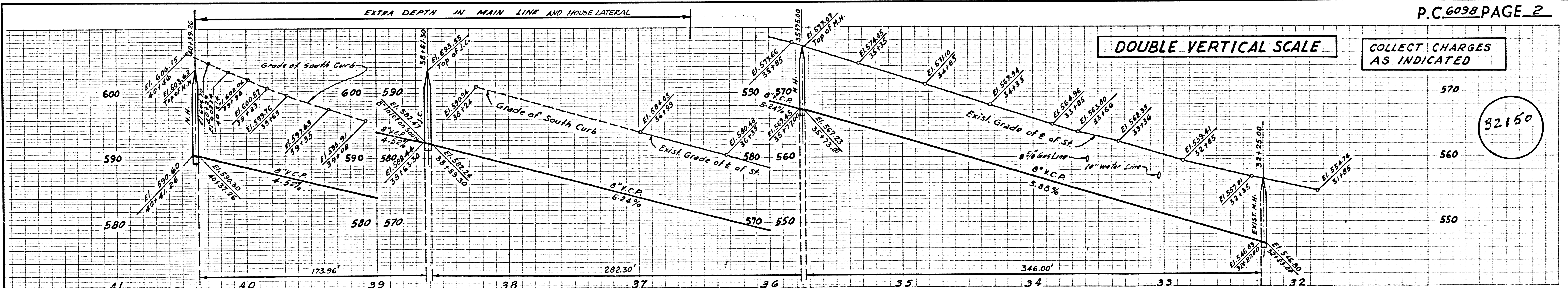
COLLECT CHARGES AS INDICATED

Harold H. Kempf 3-8-62

NOTE:
 GRADES TO WHICH THIS IMPROVEMENT IS TO BE CONSTRUCTED ARE SHOWN ON PLANS AND PROFILES. GRADE POINTS FOR TOP OF CURBS, CENTER LINE OF STREETS OR CENTER LINE OF ALLEYS ARE SHOWN BY CIRCLES ON PROFILES AT ALL POINTS BETWEEN DESIGNATED POINTS THE GRADE SHALL BE ESTABLISHED SO AS TO CONFORM TO A STRAIGHT LINE DRAWN BETWEEN SAID DESIGNATED POINTS.
 ELEVATIONS ARE IN FEET ABOVE U.S.C. & G.S. SEA LEVEL DATUM OF 1929.
 THIS DRAWING AND THE DATA HEREON ARE HEREBY MADE A PART OF THE SPECIFICATIONS.
 WORK SHALL BE CONSTRUCTED ACCORDING TO SPECIFICATIONS ON FILE IN THE OFFICE OF THE COUNTY ENGINEER AND SHALL BE PROSECUTED ONLY IN THE PRESENCE OF THE COUNTY ENGINEER.
 BEFORE WORK CAN BE STARTED, THE CONTRACTOR MUST OBTAIN A PERMIT TO EXCAVATE IN COUNTY STREETS FROM THE L.A. COUNTY ROAD DEPT., DISTRICT OFFICE NO. 1, AND \$100 PER 10' THE COUNTY ENGINEER ROOM 310 CO. ENGINEER BUILDING, 126th ST. SUFFICIENT TO COVER THE COST OF CONSTRUCTION INSPECTION AND RECORD PLANS.
 APPROVAL OF THIS PLAN BY THE COUNTY OF LOS ANGELES DOES NOT CONSTITUTE A REPRESENTATION AS TO THE ACCURACY OF THE LOCATION OF OR THE EXISTENCE OR NON-EXISTENCE OF ANY UNDERGROUND UTILITY PIPE, OR STRUCTURE WITHIN THE LIMITS OF THIS PROJECT. THIS NOTE APPLIES TO ALL PAGES.
 IF WORK IS TO BE DONE IN A STATE HIGHWAY, A PERMIT MUST BE OBTAINED FROM THE STATE OF CALIFORNIA, DIVISION OF HIGHWAYS, 120 SOUTH SPRING STREET.

COUNTY OF LOS ANGELES, CALIFORNIA
 APPROVED, JOHN A. LAMBIE, COUNTY ENGINEER APPROVED, J. D. PARKHURST, CHIEF ENGINEER
 COUNTY SANITATION DISTRICT NO. 21
 BY: [Signatures] OFFICE ENGINEER
 CHECKED BY: [Signature] OFFICE ENGINEER
 OFFICE OF COUNTY ENGINEER, REG. C. E. NO. 2406

SUBMITTED BY: W.C. Poindexter 3-8-62
 SAN DIMAS REGIONAL ENGINEER REG. NO.



10411
 10412
 10413
 10414
 10415
 10416
 10417
 10418
 10419
 10420
 10421
 10422
 10423
 10424
 10425
 10426
 10427
 10428
 10429
 10430
 10431
 10432
 10433
 10434
 10435
 10436
 10437
 10438
 10439
 10440
 10441
 10442
 10443
 10444
 10445
 10446
 10447
 10448
 10449
 10450

