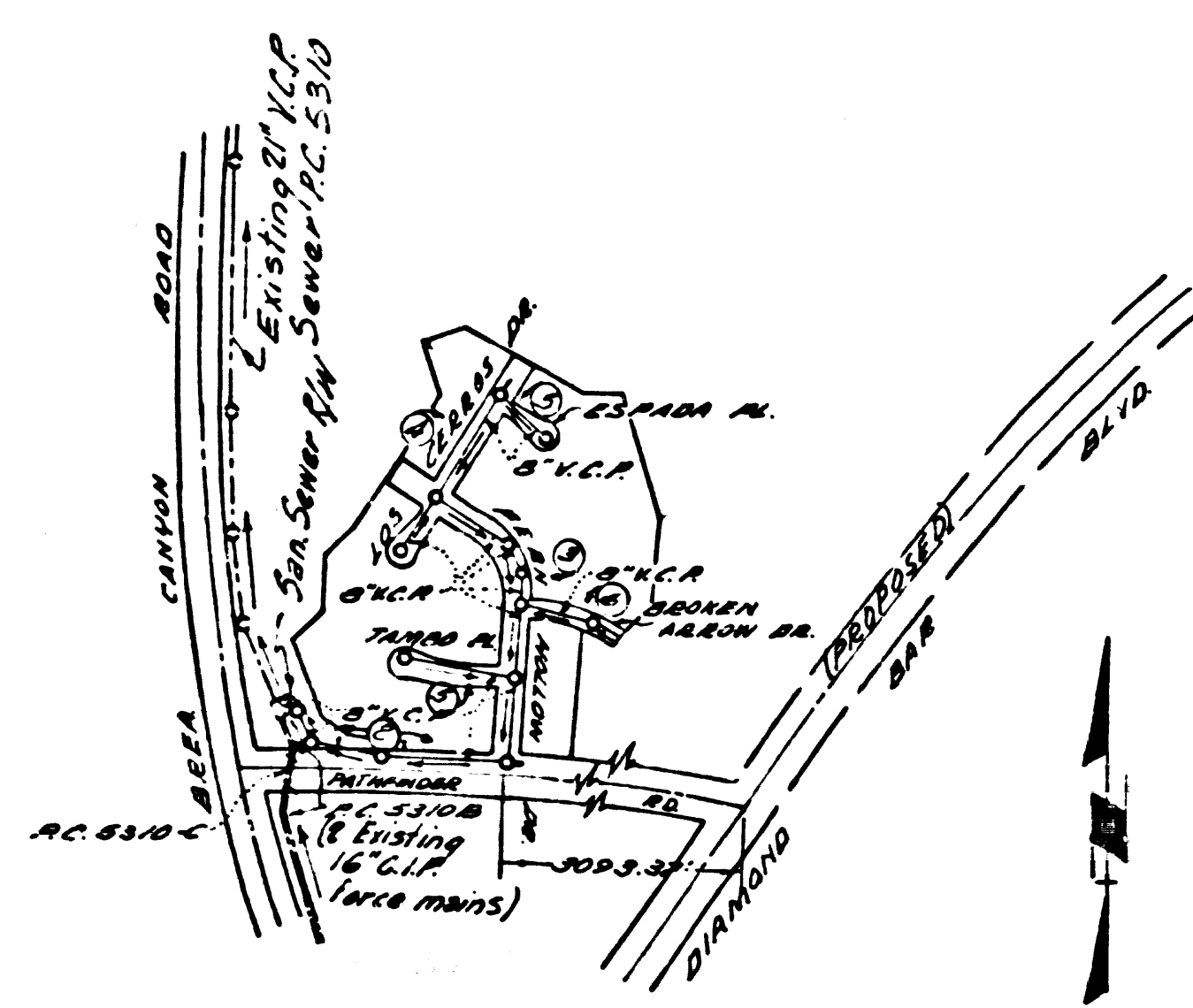


DOUBLE SCALE
SAN DIMAS BLDG. DIST. NO. 10

PROFILE ALIGNMENT AND GRADE OF P.C. 6099
SANITARY SEWERS PAGE 1
TO BE CONSTRUCTED IN J.M. 0357.37

TRACT NO 27036
PRIVATE CONTRACT NO. 6099

W.S. 39
3 SHEETS; 2 PAGES
SCALE: VERT. 1"=8'
HORIZ. 1"=40'
December, 1961
PREPARED IN THE OFFICES OF
DUTCH HOLZHAUER AND ASSOCIATES
7 W. Hollman Ave., Alhambra, Calif. CU 3-5231
BY: J. E. Carlat
REG. C. E. NO. 2448
FOR LEGEND SEE PLAN NO. S-A-64



INDEX MAP
TRACT NO 27036
SCALE 1"=40'
P.C. 6099

BENCH MARK:
56 2000 Beginning of 1st Brea Canyon Rd. 1
Pathfinder Bldg. 1st Floor E.L. 840.00
Elev. 3.00 mi. B.D.B.M. Min. in wall 6" on
near int. of two conc. drains 3.75' N1/2
S4 2" I.R. marker 6" N1/2 3" up.
OTTERBEIN 1955 E.L. 840.446

PRIVATE ENGINEER'S NOTICE TO CONTRACTORS
The existence and location of any underground utility pipes or structures shown on these plans are obtained by a search of the available records. To the best of our knowledge there are no existing utilities or structures except as shown on these plans.
The Contractor is required to take due precautionary measures to protect the utility lines and structures shown and any other lines and structures not of record or not shown on these plans.

J. E. Carlat
DIVISION BY TELEPHONE, MADRON 8-4147
REG. C. E. NO. 2448

- NOTES:**
1. PROVIDE STAKES ON THE PROPERTY LINE OR PROPERTY LINES PRODUCED AT RIGHT ANGLES TO THE SEWER LINE AT THE CENTER LINE OF EACH MANHOLE.
 2. NO REPRESENTATIVE OF THE COUNTY ENGINEER WILL SURVEY OR LAY OUT ANY PORTION OF THE WORK.
 3. THE OWNER OR HIS AUTHORIZED REPRESENTATIVE SHALL FURNISH THE COUNTY ENGINEER WITH GRADE SHEETS AND STATIONING FOR ALL HOUSE LATERALS AND Y BRANCHES AND SHALL PROVIDE STAKES FOR THEM AT THEIR PROPER LOCATIONS WITH STATIONING PLAINLY MARKED. ANY CHANGE IN LOCATION SHALL BE REQUESTED IN WRITING BY THE OWNER OR HIS REPRESENTATIVE.
 4. THE PRIVATE ENGINEER SHALL FURNISH THE HOUSE LATERAL DEPTH AT THE PROPERTY LINE BELOW THE TOP OF CURB ELEVATION FOR EACH HOUSE LATERAL ON THE GRADE SHEET.
 5. NO REVISIONS SHALL BE MADE IN THESE PLANS WITHOUT THE APPROVAL OF THE COUNTY ENGINEER.
 6. USE STANDARD MANHOLE FRAMES AND COVERS, S-117
 7. USE EXTRA STRENGTH PIPE ALL PIPE STANDARD DEPTH EXCEPT AS NOTED.
 8. USE CEMENT MORTAR OR "WEDGLOCK" OR "SPEED SEAL" FOR ALL V.C.P. JOINTS PER SPECS, SECS. 14 & 14.
 9. RESURFACE ALL TRINCH WITHIN PAVED AREA TO MEET L.A. COUNTY ROAD DEPT. OR CALIF. STATE HIGHWAY REQUIREMENTS IN ACCORDANCE WITH PERMITS.
 10. ENCASE FOUR FEET OF SEWER AT POINTS OF INTERFERENCE WITH POLES, CASE III, S-117.
 11. HOUSE LATERALS TO BE CONSTRUCTED WITH INVERTS AT PROPERTY LINE 6" FEET BELOW CURB GRADE EXCEPT AS NOTED.
 12. MANHOLES SHALL BE BRICK SEWER STRUCTURES PER S-117 PRECAST MANHOLES PER S-117 OR 8" V.C.P. SHALL BE USED AS AN ALTERNATE IN LOCATION APPROVED BY THE COUNTY ENGINEER.
 13. FOR ALLOWABLE LEAKAGE TEST USE FORMULA NO. 1, SPECS, SEC. 14.
 14. MANHOLE TOPS IN UNIMPROVED RIGHTS-OF-WAY TO BE SIX INCHES ABOVE FINISHED GRADE.
 15. THE CONTRACTOR SHALL NOTIFY THE CONSTRUCTION DIVISION BY TELEPHONE, MADRON 8-4147, AT LEAST TWENTY-FOUR HOURS BEFORE STARTING ANY WORK UNDER THIS CONTRACT.
 16. STANDARD SPECIFICATIONS DATED OCT. 25, 1961 APPLY IN CONSTRUCTION OF THIS PROJECT.
 17. SEWERS IN FILLED GROUND:
 - (a) NO CONSTRUCTION WILL BE PERMITTED IN FILLED AREAS UNLESS ACCEPTABLE CERTIFICATION IS SUBMITTED TO THE CONSTRUCTION DIVISION OF THE COUNTY ENGINEER'S DEPARTMENT THAT RELATIVE COMPACTION IS GREATER THAN 80%.
 - (b) IF COMPACTION IS LESS THAN 80%, THE SEWER MUST BE ENCASED AS SHOWN ON PLANS PER S-117.
 - (c) IF COMPACTION IS GREATER THAN 80%, NEITHER CASING NOR SURFICIAL MANHOLE SALES WILL BE REQUIRED. HUMMER JOINT COMPOUND OR "WEDGLOCK" OR "SPEED SEAL" MUST BE SUBSTITUTED FOR CEMENT MORTAR FOR ALL WHITE METALLED AREAS.
 18. ON LOTS WITH STATION SHOWN IN CIRCLE THE HOUSE LATERAL SHALL NOT BE CONSTRUCTED UPSTREAM OF THAT STATION.

REVISION:

Page 3 Revised Sewer Grade on Fern Hollow Drive Sta 8+48.01 to Sta 8+13.01
Page 4 Revised Sewer Grade on Las Casas Drive Sta 0+00.00 to Sta 1+28.29
Page 5 Revised Street Sewer Grades on Las Casas Drive Sta 0+00.00 to Sta 2+84.79
Page 5-B Revised Street Sewer Grades on Espada Place Sta 1+00.00 to Sta 2+02.68

W. C. Poindexter Date: 4-19-62
San Dimas Regional Engineer

NO CHARGE FOR CONNECTIONS
M. M. G. Dinning 3-23-62

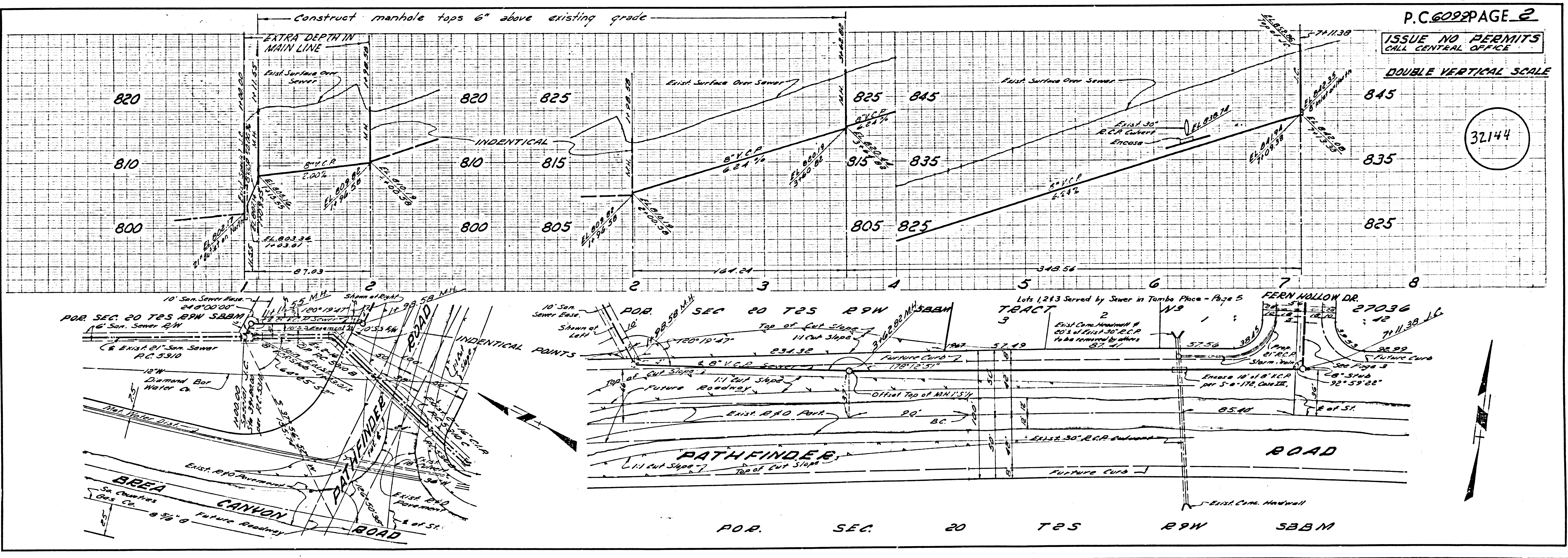
NOTE:
GRADES TO WHICH THIS IMPROVEMENT IS TO BE CONSTRUCTED ARE SHOWN ON PLANS AND PROFILES. GRADE POINTS FOR TOP OF CURBS, CENTER LINE OF STREETS, OR CENTER LINE OF ALLEYS ARE SHOWN BY CIRCLES ON PROFILES. AT ALL POINTS BETWEEN DESIGNATED POINTS THE GRADE SHALL BE ESTABLISHED SO AS TO CONFORM TO A STRAIGHT LINE DRAWN BETWEEN SAID DESIGNATED POINTS.
ELEVATIONS ARE IN FEET ABOVE U.S.C. & G.S. SEA LEVEL DATUM OF 1929.
THIS DRAWING AND THE DATA HEREON ARE HEREBY MADE A PART OF THE SPECIFICATIONS.
WORK SHALL BE CONSTRUCTED ACCORDING TO SPECIFICATIONS ON FILE IN THE OFFICE OF THE COUNTY ENGINEER AND SHALL BE PROSECUTED ONLY IN THE PRESENCE OF THE COUNTY ENGINEER.
BEFORE WORK CAN BE STARTED, THE CONTRACTOR MUST OBTAIN A PERMIT TO EXCAVATE IN COUNTY STREETS FROM THE L.A. COUNTY ROAD DEPT., DISTRICT OFFICE NO. 1 AND PERMITS FROM THE COUNTY ENGINEER ROOM 312, A COUNTY ENGINEER'S OFFICE, SUFFICIENT TO COVER THE COST OF CONSTRUCTION INSPECTION AND RECORD PLANS.
APPROVAL OF THIS PLAN BY THE COUNTY OF LOS ANGELES DOES NOT CONSTITUTE A REPRESENTATION AS TO THE ACCURACY OF THE LOCATION OF OR THE EXISTENCE OR NON-EXISTENCE OF ANY UNDERGROUND UTILITY PIPE, OR STRUCTURE WITHIN THE LIMITS OF THIS PROJECT. THIS NOTE APPLIES TO ALL PAGES.
IF WORK IS TO BE DONE IN A STATE HIGHWAY, A PERMIT MUST BE OBTAINED FROM THE STATE OF CALIFORNIA, DIVISION OF HIGHWAYS, 120 SOUTH SPRING STREET.

COUNTY OF LOS ANGELES, CALIFORNIA

APPROVED, JOHN A. LAMBIE, COUNTY ENGINEER APPROVED, J. E. CARLAT, CHIEF ENGINEER
CO. SAN. DIST. NO. 21

BY: J. E. Carlat ASST. SANITATION ENGINEER OFFICE ENGINEER
CHECKED BY: J. E. Carlat
OFFICE OF COUNTY ENGINEER, REG. C. E. NO. 7842

NO CONNECTIONS FOR THE DISPOSAL OF INDUSTRIAL WASTES SHALL BE MADE TO SEWERS SHOWN ON THESE DRAWINGS WITHOUT WRITTEN PERMISSION FROM THE CHIEF ENGINEER AND GENERAL MANAGER OF THE COUNTY SANITATION DISTRICTS.

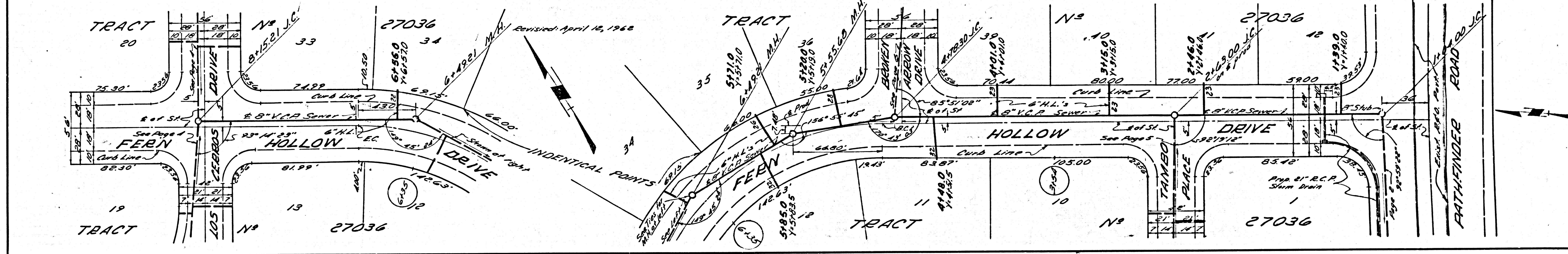
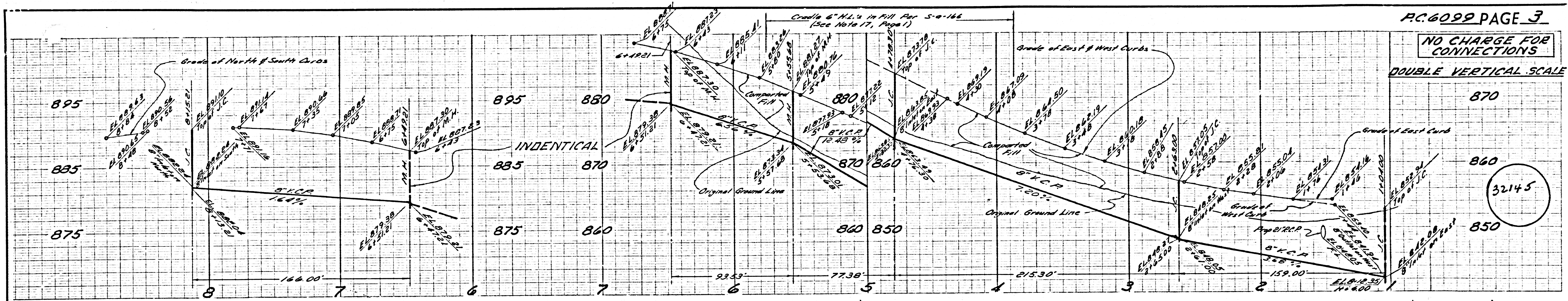


P.C. 6099 PAGE 2
ISSUE NO PERMITS
CALL CENTRAL OFFICE

32144

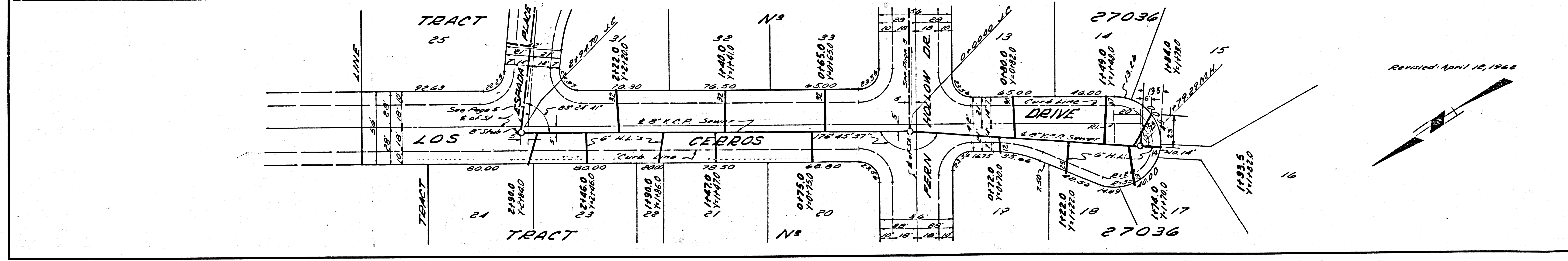
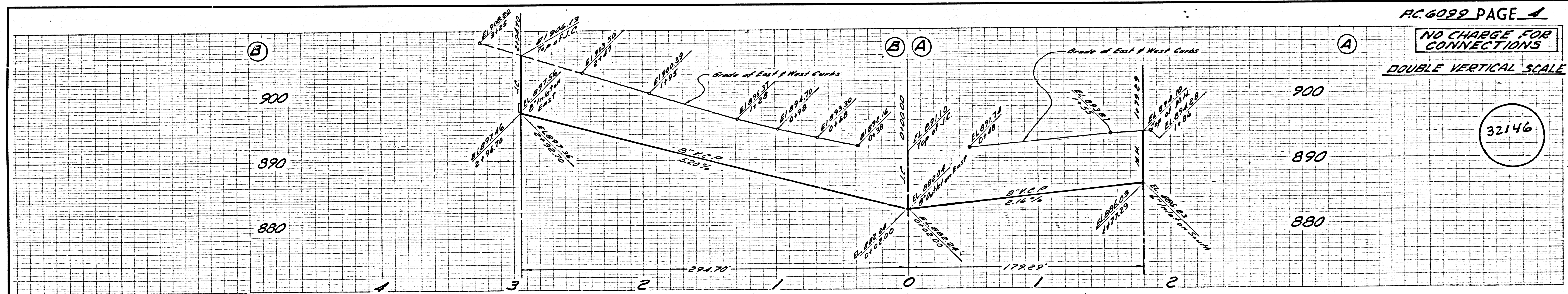
NO CHARGE FOR CONNECTIONS

DOUBLE VERTICAL SCALE

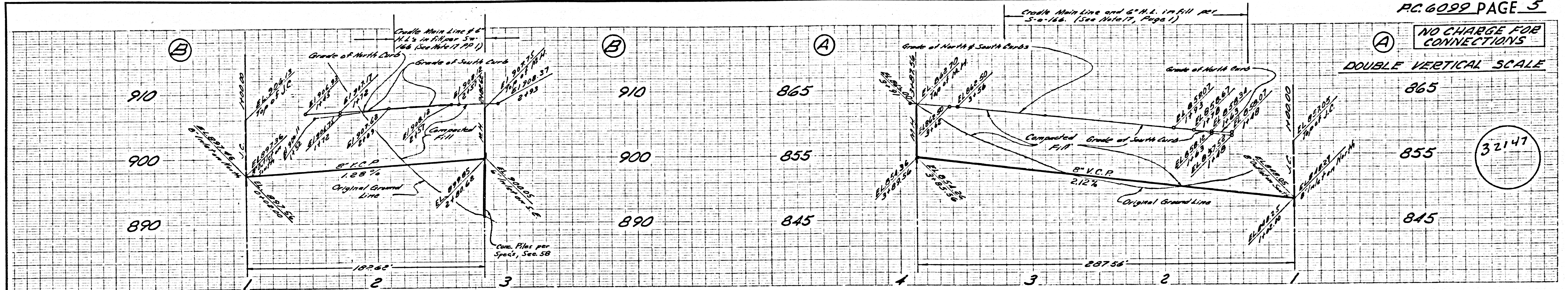


NO CHARGE FOR CONNECTIONS

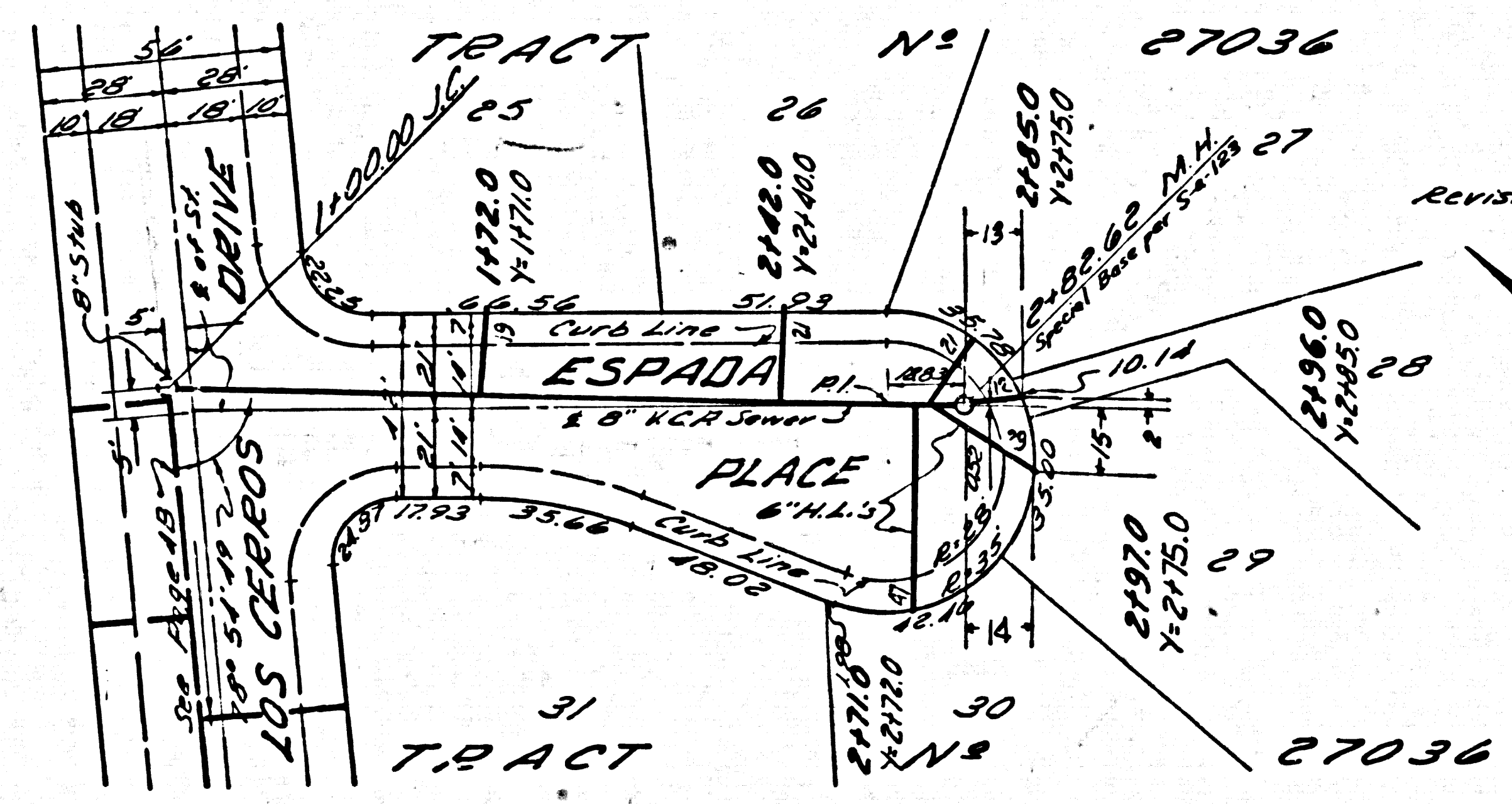
DOUBLE VERTICAL SCALE



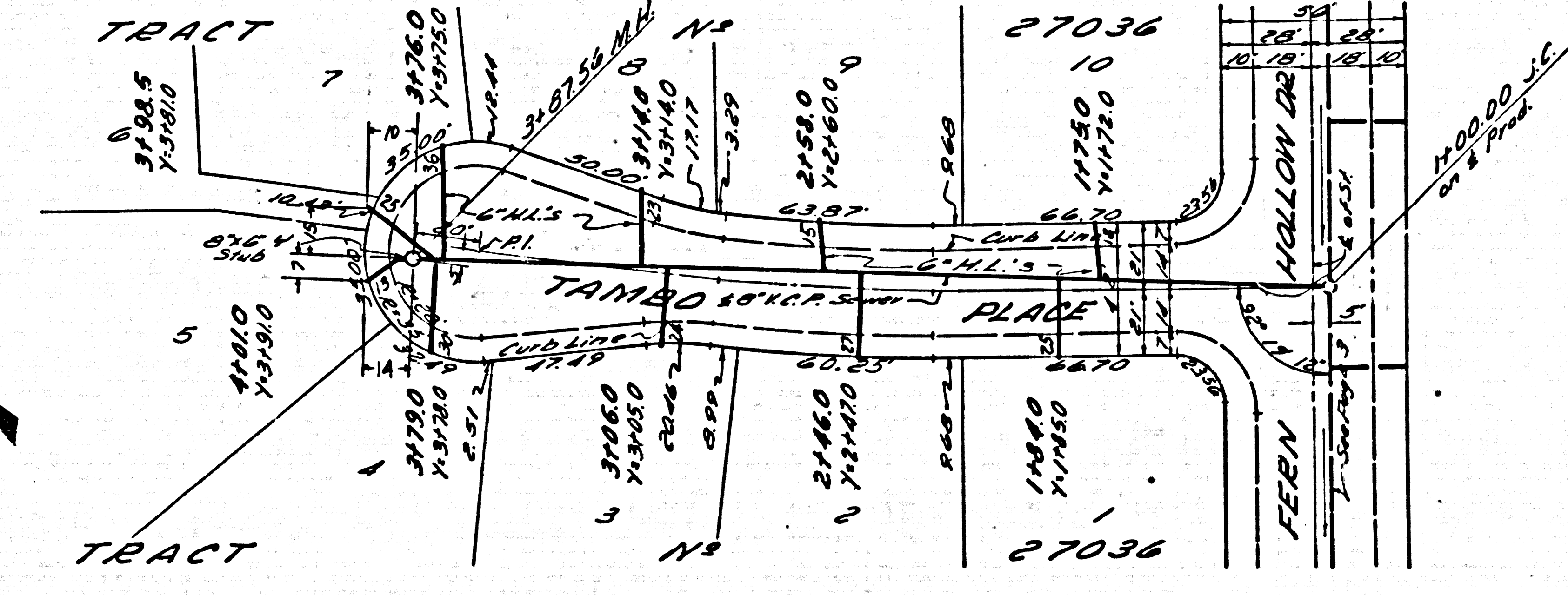
NO CHARGE FOR CONNECTIONS
DOUBLE VERTICAL SCALE



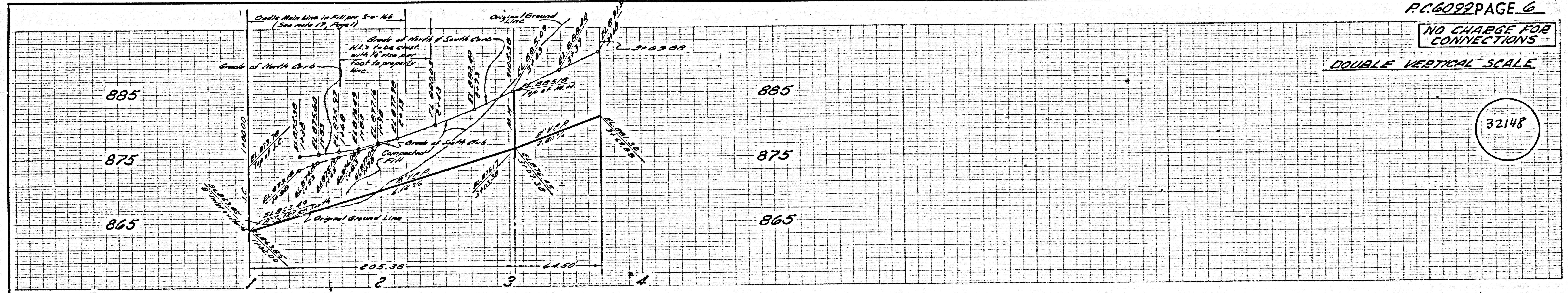
32147



Revised: April 12, 1962



NO CHARGE FOR CONNECTIONS
DOUBLE VERTICAL SCALE



32148

