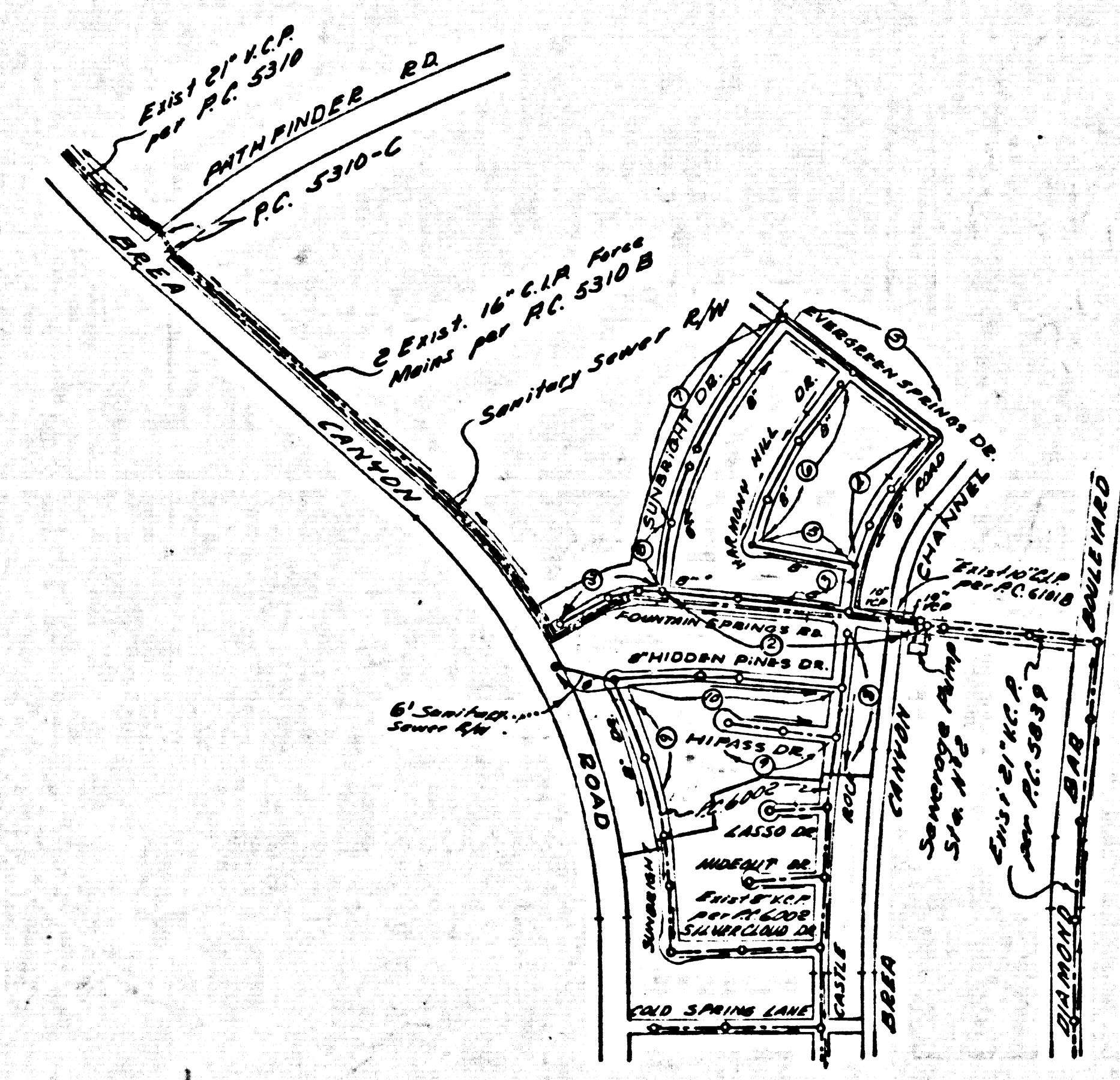


DOUBLE SCALE
SAN DIMAS BLDG. DIST. NO. 10

PROFILE ALIGNMENT AND GRADE OF P.C. 6101
SANITARY SEWERS PAGE 1
TO BE CONSTRUCTED IN JN0357.39
TRACT N° 25986



INDEX MAP
TRACT N° 25986
Scale: 1" = 600'
P.C. 6101

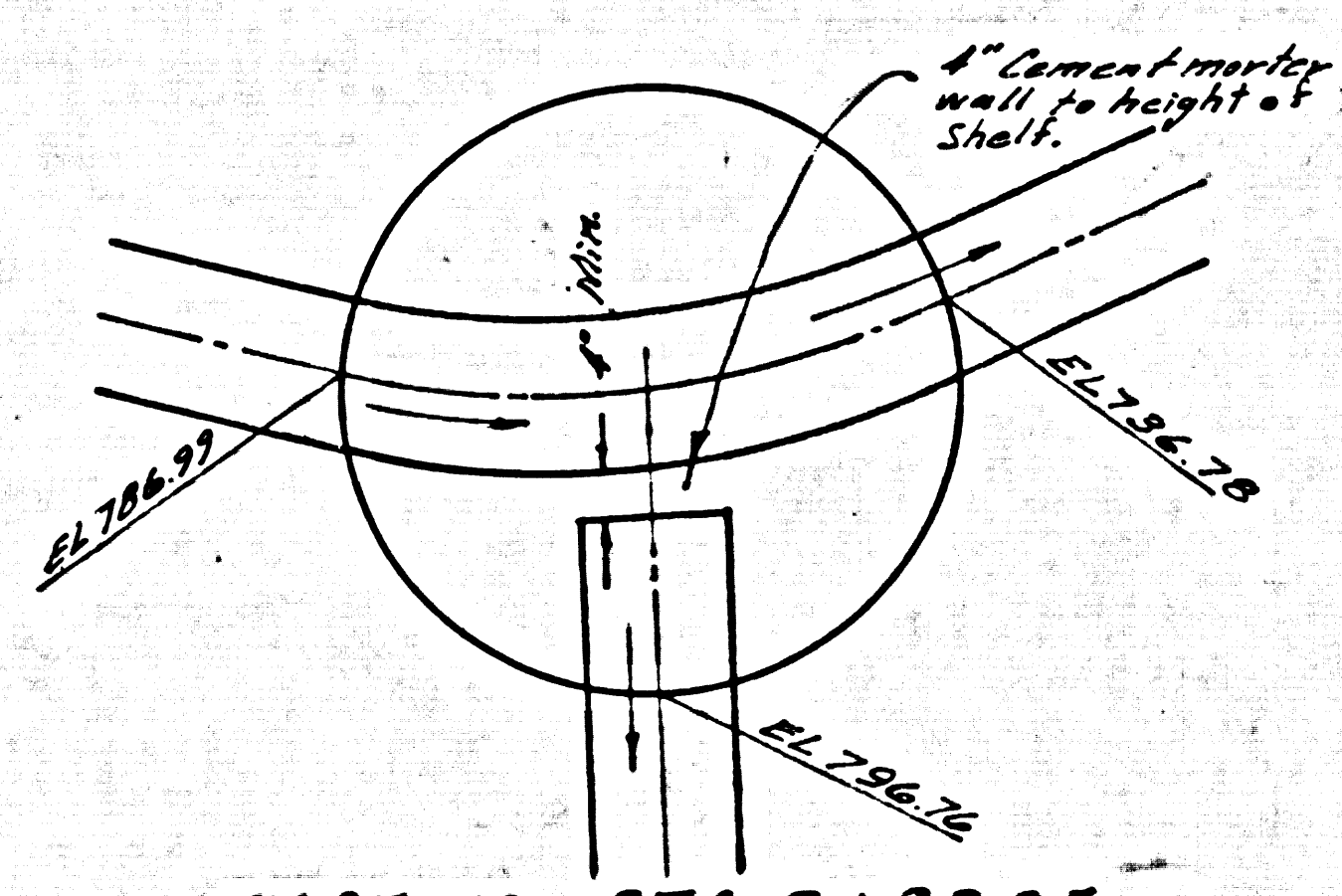
NO CONNECTIONS FOR THE DISPOSAL OF INDUSTRIAL WASTES SHALL BE MADE TO SEWERS SHOWN ON THESE DRAWINGS WITHOUT WRITTEN PERMISSION FROM THE CHIEF ENGINEER AND GENERAL MANAGER OF THE COUNTY SANITATION DISTRICTS.

BENCH MARK:
56.1889 Road Dept. B.M. 746 Near So. End Concrete Roadwall N° 100+93 ± 20.0
N. of Green Canyon Road 0.5 Miles N. of Green Canyon Culvert Road.
QUAD OTTERBEIN 1955 ELEX 727.345

PRIVATE ENGINEER'S NOTICE TO CONTRACTOR

The existence and location of any underground utility pipes or structures shown on these plans are obtained by a search of the available records. To the best of our knowledge there are no existing utilities or structures except as shown on these plans. The Contractor is required to take due precautionary measures to protect the utility lines or structures shown and any other lines and structures not of record or not shown on these plans.

D. C. Hoffmann
P.E. N° 10219



PAGE 10, STA. 8+93.85
MANHOLE DETAIL
No Scale

- NOTES:
1. PROVIDE STAKES ON THE PROPERTY LINE OR PROPERTY LINES PRODUCED AT RIGHT ANGLES TO THE SEWER LINE AT THE CENTER LINE OF EACH MANHOLE.
 2. NO REPRESENTATIVE OF THE COUNTY ENGINEER WILL SURVEY OR LAY OUT ANY PORTION OF THE WORK.
 3. THE OWNER OR HIS AUTHORIZED REPRESENTATIVE SHALL FURNISH THE COUNTY ENGINEER WITH GRADE SHEETS AND STATIONING FOR ALL HOUSE LATERALS AND Y BRANCHES AND SHALL PROVIDE STAKES FOR THEM AT THEIR PROPER LOCATIONS WITH STATIONING PLAINLY MARKED. ANY CHANGE IN LOCATION SHALL BE REQUESTED IN WRITING BY THE OWNER OR HIS REPRESENTATIVE.
 4. THE PRIVATE ENGINEER SHALL FURNISH THE HOUSE LATERAL DEPTH AT THE PROPERTY LINE BELOW THE TOP OF CURB ELEVATION FOR EACH HOUSE LATERAL ON THE GRADE SHEET.
 5. NO REVISIONS SHALL BE MADE IN THESE PLANS WITHOUT THE APPROVAL OF THE COUNTY ENGINEER.
 6. USE STANDARD MANHOLE FRAMES AND COVERS, S-17, SPEC. SEC. 14.
 7. USE EXTRA STRENGTH PIPE ALL PIPE STANDARD DEPTH EXCEPT AS NOTED.
 8. USE 12\"/>

Words in circle indicate Y's shall be laid horizontal.

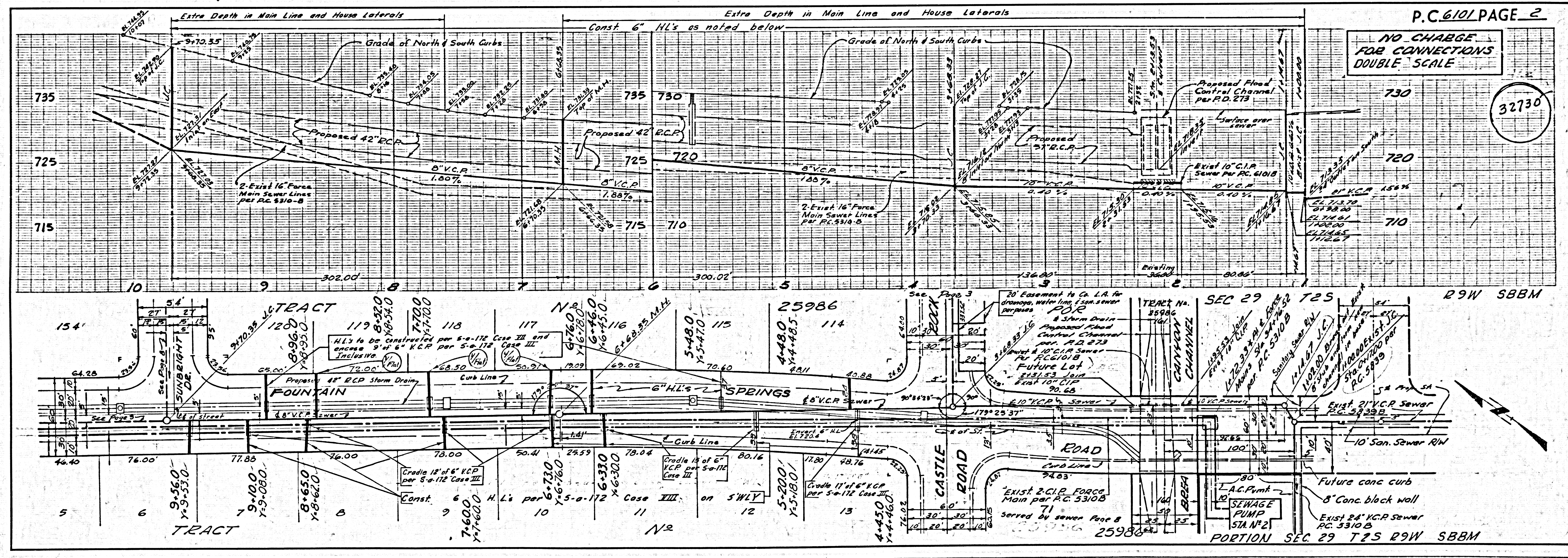
NO CHARGE FOR CONNECTIONS

Donald R. Olson

W.S. 39
5 SHEETS; 10 PAGES
SCALE: VERT. 1" = 4'
HORIZ. 1" = 40'
JANUARY, 1962
PREPARED IN THE OFFICES OF
DUTCH HOLZHAUER AND ASSOCIATES
7 W. Hollman Ave., Alhambra, Calif. CA 91801
REG. C. E. NO. 10219
FOR LEGEND SEE PLAN NO. S-A-64

GRADES TO WHICH THIS IMPROVEMENT IS TO BE CONSTRUCTED ARE SHOWN ON PLANS AND PROFILES. GRADE POINTS FOR TOP OF CURB, CENTER LINE OF STREETS OR CENTER LINE OF ALLEYS ARE SHOWN BY CIRCLES ON PROFILES. AT ALL POINTS BETWEEN DESIGNATED POINTS THE GRADE SHALL BE ESTABLISHED SO AS TO CONFORM TO A STRAIGHT LINE DRAWN BETWEEN SAID DESIGNATED POINTS.
ELEVATIONS ARE IN FEET ABOVE U.S.C. & G.S. SEA LEVEL DATUM OF 1929.
THIS DRAWING AND THE DATA HEREON ARE HEREBY MADE A PART OF THE SPECIFICATIONS.
WORK SHALL BE CONSTRUCTED ACCORDING TO SPECIFICATIONS ON FILE IN THE OFFICE OF THE COUNTY ENGINEER AND SHALL BE PROSECUTED ONLY IN THE PRESENCE OF THE COUNTY ENGINEER.
BEFORE WORK CAN BE STARTED THE CONTRACTOR MUST OBTAIN A PERMIT TO EXCAVATE IN COUNTY STREETS FROM THE L. A. COUNTY ROAD DEPT., DISTRICT OFFICE NO. 1, AND PAY A FEE TO THE COUNTY ENGINEER ROOM 244 COUNTY ENGINEER BLDG., 400 N. G ST. SUFFICIENT TO COVER THE COST OF CONSTRUCTION INSPECTION AND RECORD PLANS.
APPROVAL OF THIS PLAN BY THE COUNTY OF LOS ANGELES DOES NOT CONSTITUTE A REPRESENTATION AS TO THE ACCURACY OF THE LOCATION OR THE EXISTENCE OR NON-EXISTENCE OF ANY UNDERGROUND UTILITY PIPE, OR STRUCTURE WITHIN THE LIMITS OF THIS PROJECT. THIS NOTE APPLIES TO ALL PAGES.
IF WORK IS TO BE DONE IN A STATE HIGHWAY, A PERMIT MUST BE OBTAINED FROM THE STATE OF CALIFORNIA, DIVISION OF HIGHWAYS, 130 SOUTH SPRING STREET.

COUNTY OF LOS ANGELES, CALIFORNIA
APPROVED, JOHN A. LAMBIE, COUNTY ENGINEER
APPROVED, *D. C. Hoffmann*, CHIEF ENGINEER
CO. SAN. DIST. NO. 10
BY *D. C. Hoffmann*, ASST. SANITATION ENGINEER
BY *M. J. ...*, OFFICE ENGINEER
CHECKED BY *J. C. ...*
OFFICE OF COUNTY ENGINEER, REG. C. E. NO. 2406
Submitted: *W. C. ...* 6-27-62
San Dimas Regional Engineer

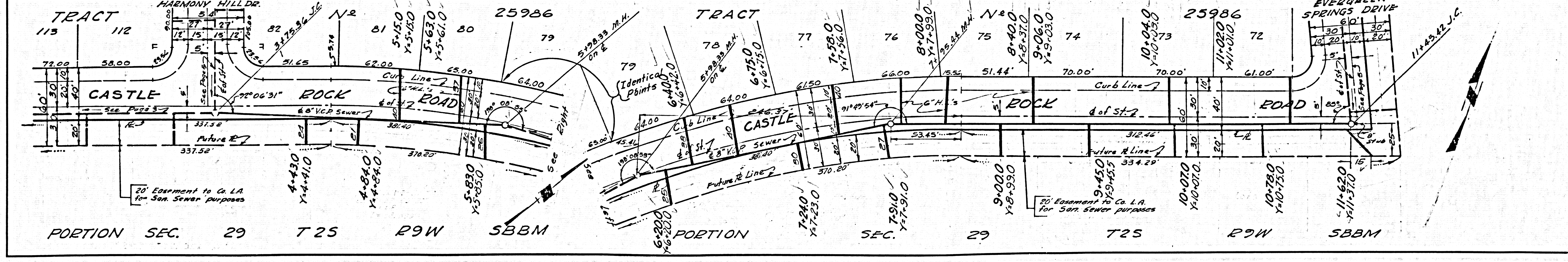
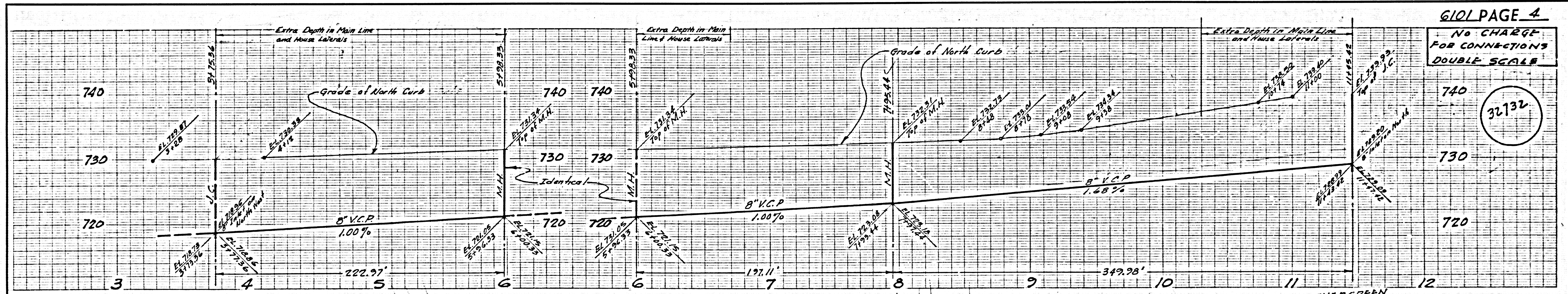
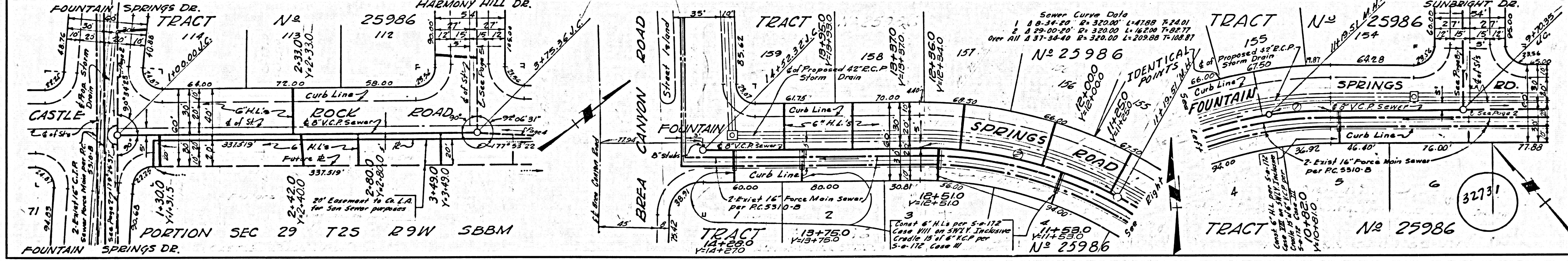
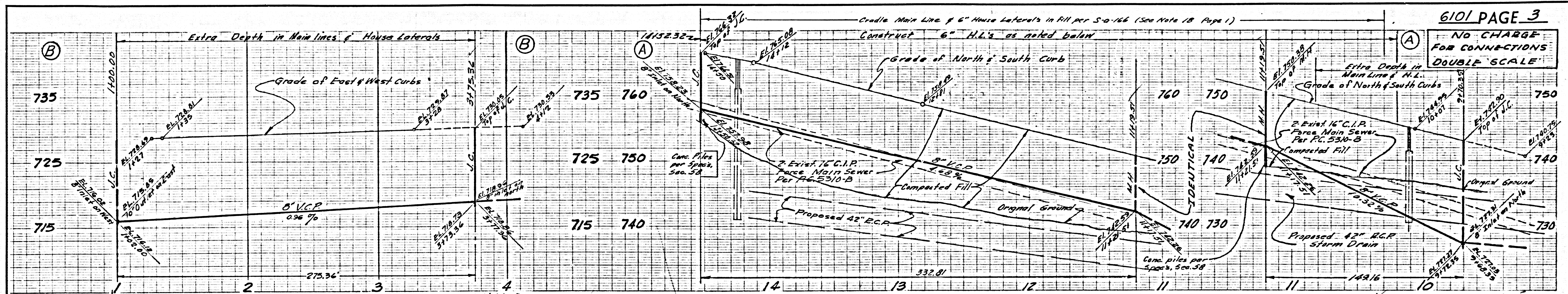


NO CHARGE FOR CONNECTIONS
DOUBLE SCALE

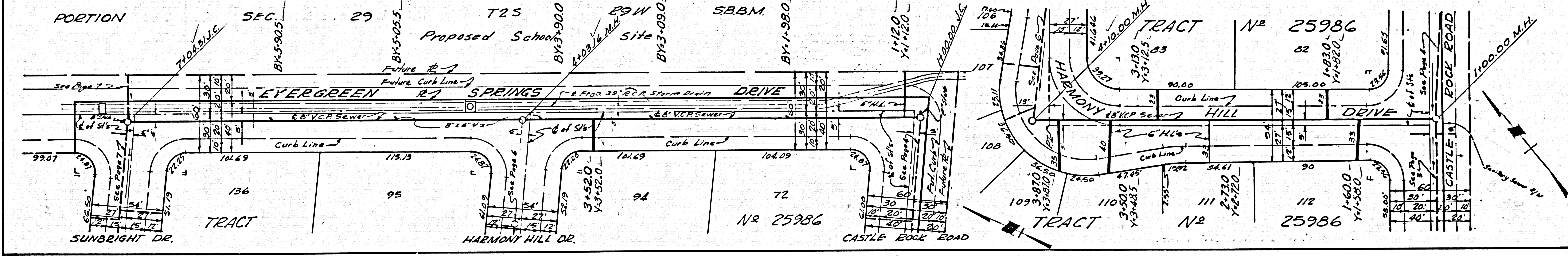
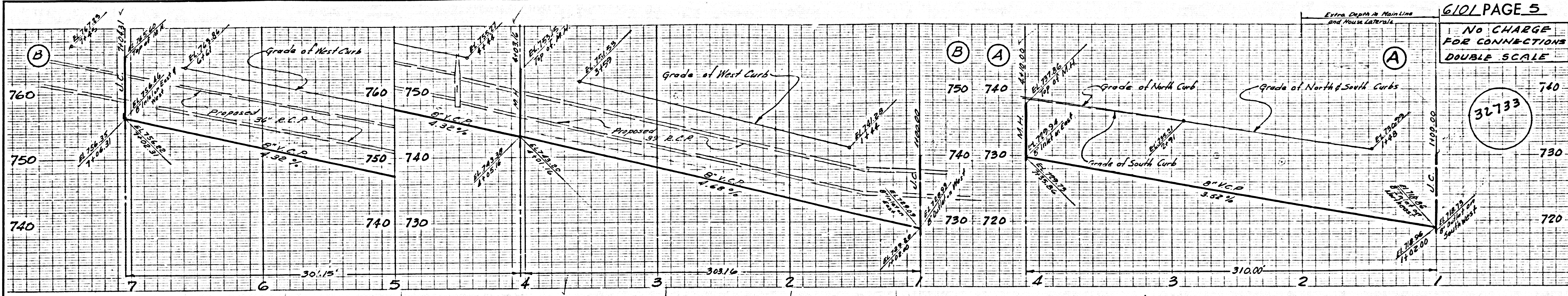
32730

P.C. 6101 PAGE 2

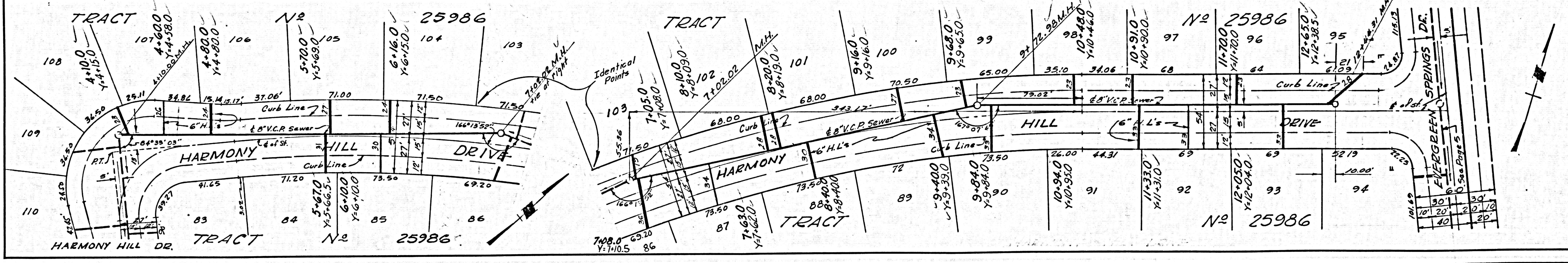
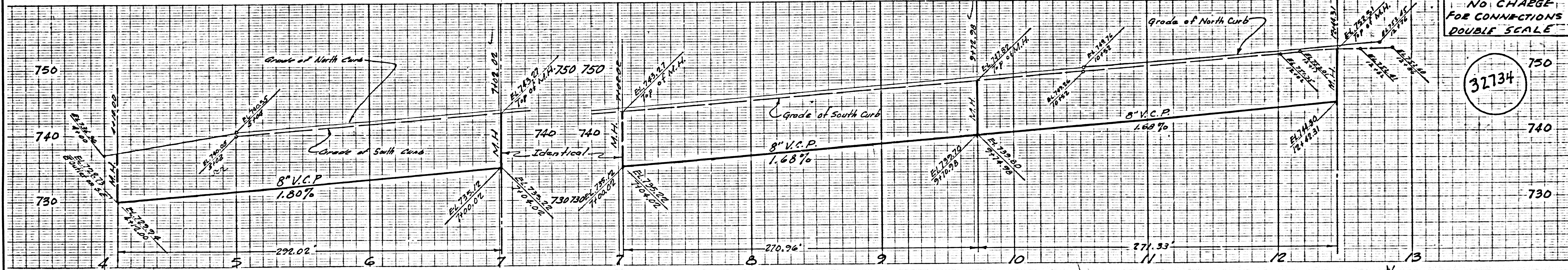
PORTION SEC. 29 T2S R9W SBBM



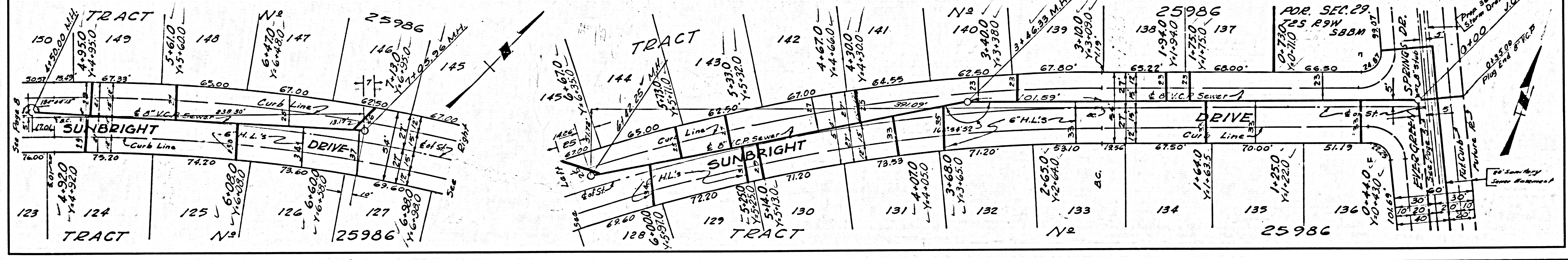
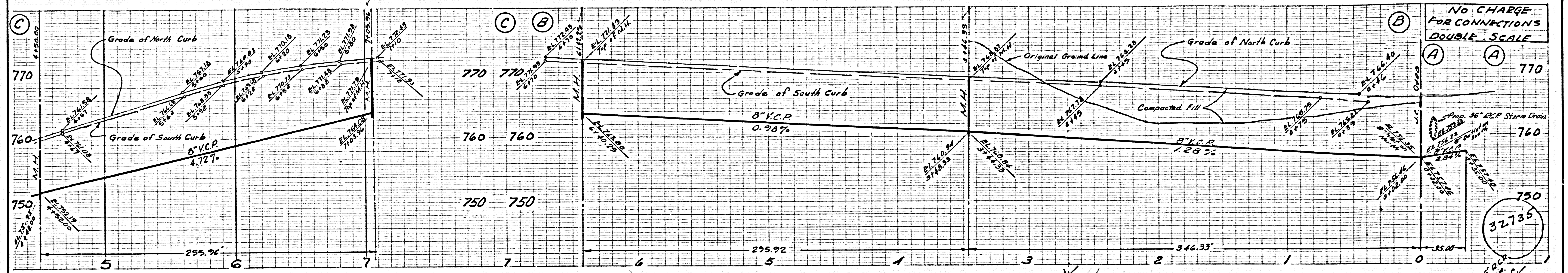
NO CHARGE FOR CONNECTIONS DOUBLE SCALE



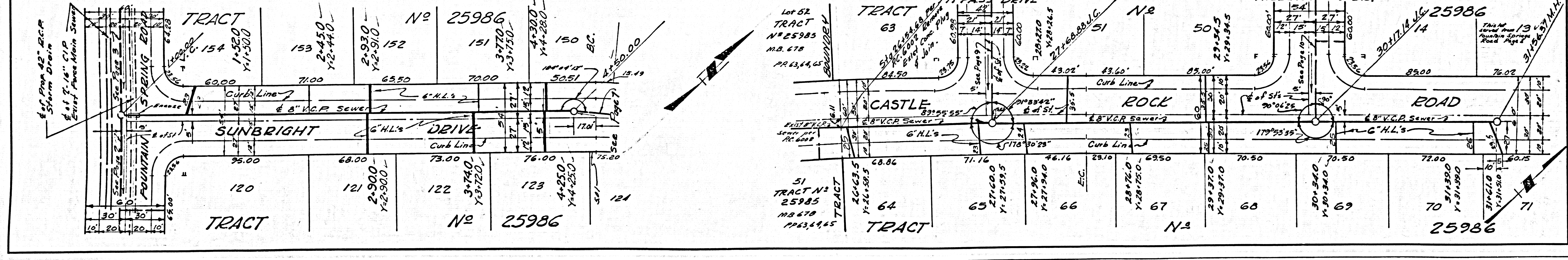
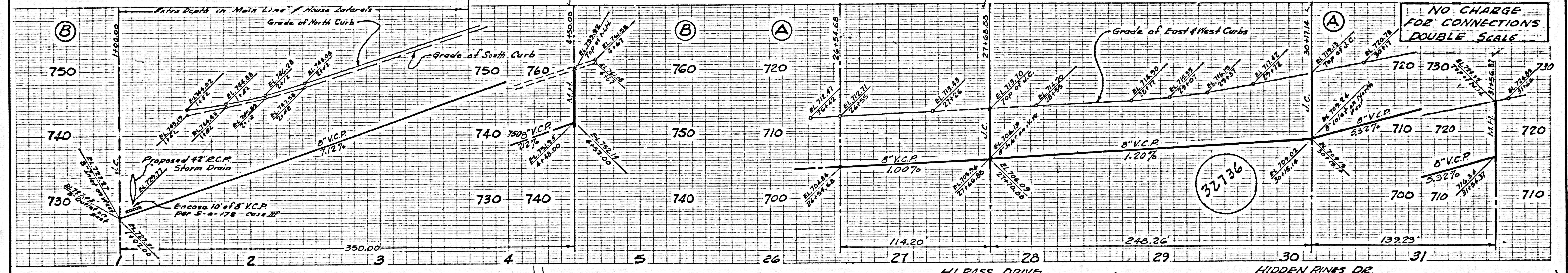
NO CHARGE FOR CONNECTIONS DOUBLE SCALE

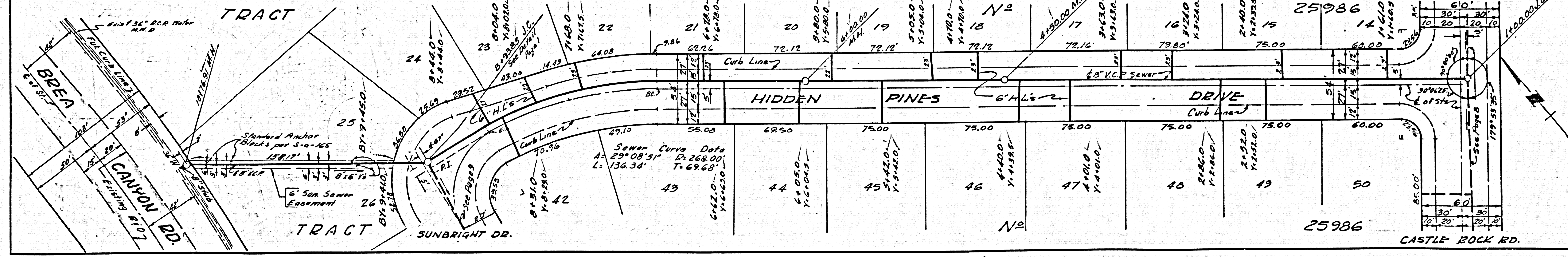
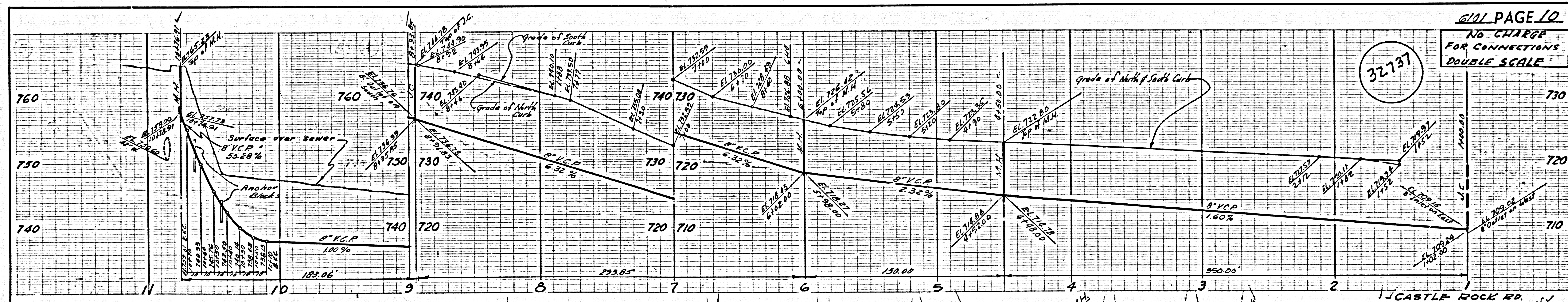
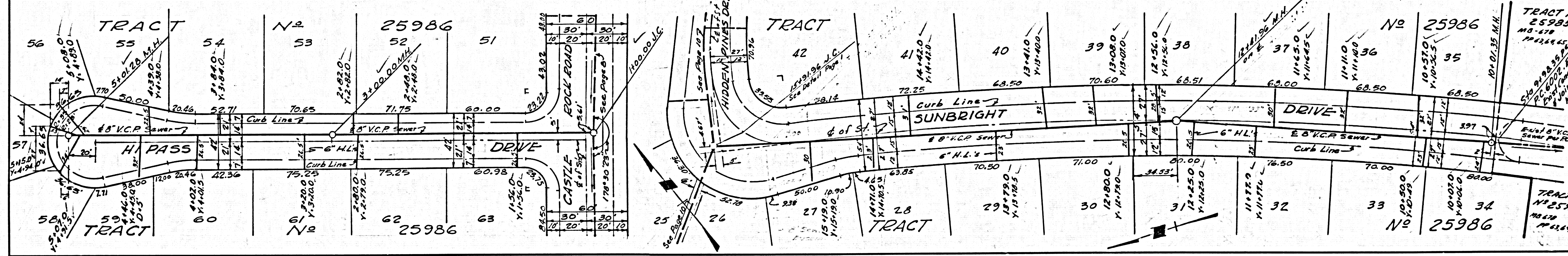
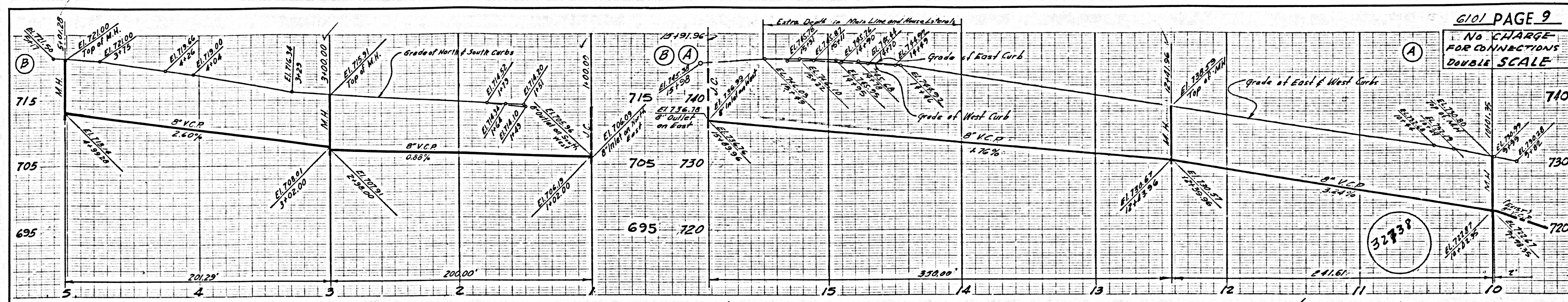


NO CHARGE FOR CONNECTIONS DOUBLE SCALE



NO CHARGE FOR CONNECTIONS DOUBLE SCALE





TENT. TRACT N^o 25990 31607

PRIVATE CONTRACT NO. 6101-B

W.S. 39

1 SHEETS: 2 PAGES

SCALE: VERT. 1"=6' HORIZ. 1"=40'

JANUARY, 1962

PREPARED IN THE OFFICES OF DUTCH HOLZHAUER AND ASSOCIATES

7 W. Holliston Ave., Arcadia, Calif. C.U. 5-5251

BY: [Signature] REG. C. E. NO. 10219

FOR LEGEND SEE PLAN NO. S-A-64

NOTE: GRADES TO WHICH THIS IMPROVEMENT IS TO BE CONSTRUCTED ARE SHOWN ON PLANS AND PROFILES. GRADE POINTS FOR TOP OF CURBS, CENTER LINE OF STREETS OR CENTER LINE OF ALLEYS ARE SHOWN BY CIRCLES ON PROFILES AT ALL POINTS BETWEEN DESIGNATED POINTS THE GRADE SHALL BE ESTABLISHED SO AS TO CONFORM TO A STRAIGHT LINE DRAWN BETWEEN SAID DESIGNATED POINTS. ELEVATIONS ARE IN FEET ABOVE U.S.C. & G.S. SEA LEVEL DATUM OF 1929. THIS DRAWING AND THE DATA HEREON ARE HEREBY MADE A PART OF THE SPECIFICATIONS ON FILE IN THE OFFICE OF THE COUNTY ENGINEER AND SHALL BE PROSECUTED ONLY IN THE PRESENCE OF THE COUNTY ENGINEER. BEFORE WORK CAN BE STARTED THE CONTRACTOR MUST OBTAIN A PERMIT TO EXCAVATE IN COUNTY STREETS FROM THE L. A. COUNTY ROAD DEPT., DISTRICT OFFICE NO. 1 AND MAKE A DEPOSIT WITH THE COUNTY ENGINEER FROM THE L. A. COUNTY ROAD DEPT. DISTRICT OFFICE NO. 1 SUFFICIENT TO COVER THE COST OF CONSTRUCTION INSPECTION AND RECORD PLANS. APPROVAL OF THIS PLAN BY THE COUNTY OF LOS ANGELES DOES NOT CONSTITUTE A REPRESENTATION AS TO THE ACCURACY OF THE LOCATION OR THE EXISTENCE OR NON-EXISTENCE OF ANY UNDERGROUND UTILITY PIPE OR STRUCTURE WITHIN THE LIMITS OF THIS PROJECT. THIS NOTE APPLIES TO ALL PAGES. IF WORK IS TO BE DONE IN A STATE HIGHWAY, A PERMIT MUST BE OBTAINED FROM THE STATE OF CALIFORNIA DIVISION OF HIGHWAYS, 128 SOUTH SPRING STREET.

COUNTY OF LOS ANGELES, CALIFORNIA

APPROVED, JOHN A. LAMBIE, COUNTY ENGINEER

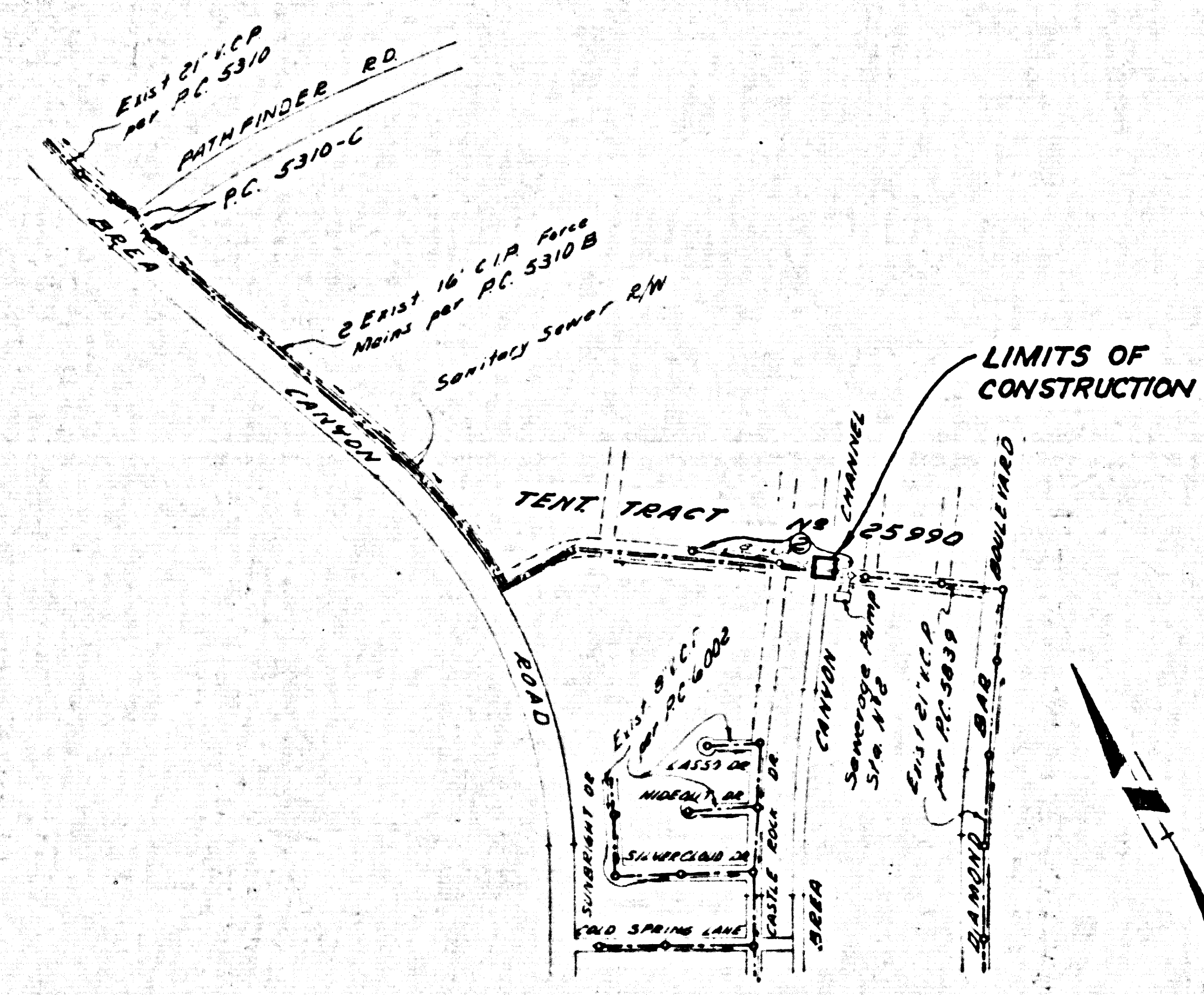
BY: [Signature] SANITATION ENGINEER

CHECKED BY: [Signature] 1-15-62

OFFICE OF COUNTY ENGINEER, REG. C. E. NO. 3416

Submitted: W.C. Reinhardt San Dimas Regional Office

BENCH MARK: 56 1803 Road Dept. B.M. TAG No. 50. 2nd Concrete Headwall No. 40-23 & 20' W. of Brea Canyon Blvd. 0.63 Miles No. of Brea Canyon Culvert Road. QUAD OTTERBEIN 1955 ELEX 727,345



INDEX MAP TENT TRACT N 25990 Scale 1"=600'

PRIVATE ENGINEER'S NOTICE TO CONTRACTOR

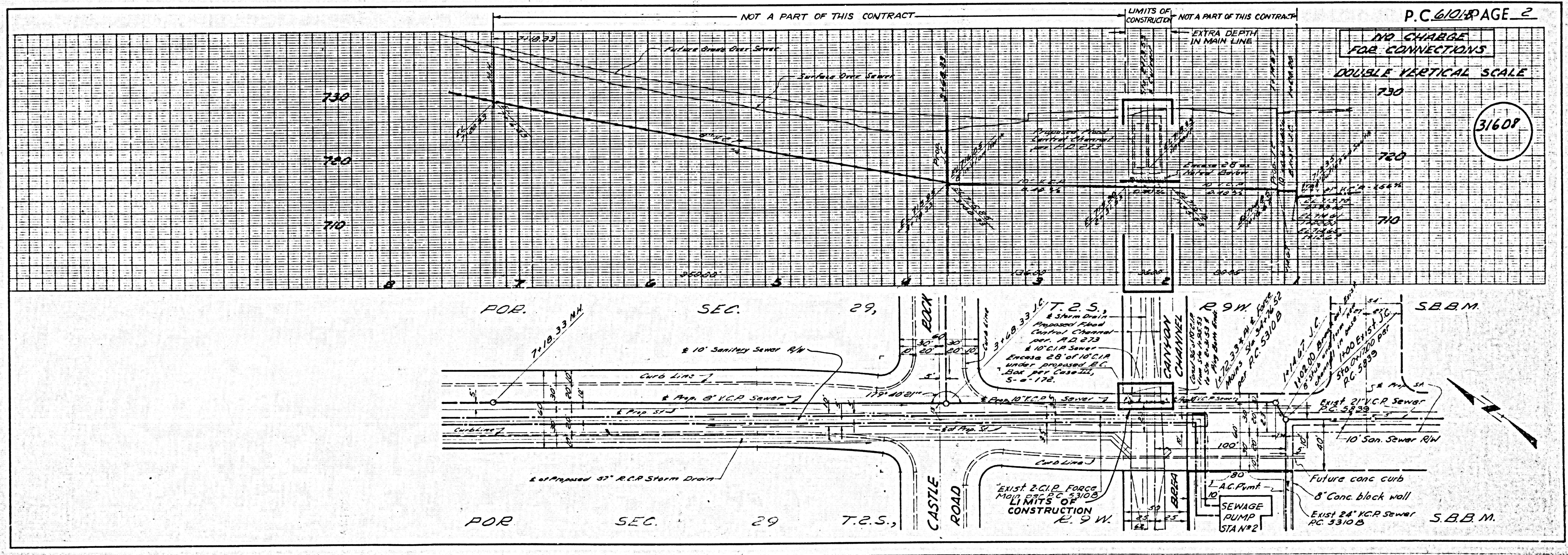
The existence and location of any underground utility pipes or structures shown on these plans are derived by a search of the available records. To the best of our knowledge there are no existing utilities or structures except as shown on these plans. The contractor is required to take due precautionary measures to protect the utility lines or structures shown and any other lines and structures not of record or not shown on these plans.

[Signature] P.E. No. 10219

- NOTES: 1. PROVIDE STAKES ON THE PROPERTY LINE OR PROPERTY LINES PRODUCED AT RIGHT ANGLES TO THE SEWER LINE AT THE CENTER LINE OF EACH MANHOLE. 2. NO REPRESENTATIVE OF THE COUNTY ENGINEER WILL SURVEY OR LAY OUT ANY PORTION OF THE WORK. 3. THE OWNER OR HIS AUTHORIZED REPRESENTATIVE SHALL FURNISH THE COUNTY ENGINEER WITH GRADE SHEETS AND STATIONING FOR ALL HOUSE LATERALS AND Y BRANCHES AND SHALL PROVIDE STAKES FOR THEM AT THEIR PROPER LOCATIONS WITH STATIONING PLAINLY MARKED. ANY CHANGE IN LOCATION SHALL BE REQUESTED IN WRITING BY THE OWNER OR HIS REPRESENTATIVE. 4. THE PRIVATE ENGINEER SHALL FURNISH THE HOUSE LATERAL DEPTH AT THE PROPERTY LINE BELOW THE TOP OF CURB ELEVATION FOR EACH HOUSE LATERAL ON THE GRADE SHEET. 5. NO REVISIONS SHALL BE MADE IN THESE PLANS WITHOUT THE APPROVAL OF THE COUNTY ENGINEER. 6. USE STANDARD MANHOLE FRAMES AND COVERS, 5-117, EXCEPT AS NOTED. 7. USE EXTRA STRENGTH PIPE ALL PIPE STANDARD DEPTH EXCEPT AS NOTED. 8. USE "WEDGE-LOCK" OR "SPEED-SEAL" FOR ALL V.C.P. JOINTS PER SPEC'S. SECS. 36 & 40. 9. RESURFACE ALL TRENCH WITHIN PAVED AREA TO MEET L.A. COUNTY ROAD DEPT. OR CALIF. STATE HIGHWAY REQUIREMENTS IN ACCORDANCE WITH PERMITS. 10. ENCASE FOUR FEET OF SEWER AT POINTS OF INTERFERENCE WITH POLES, CASE III, 5-172. 11. HOUSE LATERALS TO BE CONSTRUCTED WITH INVERTS AT PROPERTY LINE 6 FEET BELOW CURB GRADE EXCEPT AS NOTED. 12. MANHOLES SHALL BE BUILT WITH STRUTS PER 5-100. PRECAST CONCRETE MANHOLES PER 5-125 OR 5-175 MAY BE USED AS AN ALTERNATE IN LOCATIONS APPROVED BY THE COUNTY ENGINEER. 13. FOR ALLOWABLE LEAKAGE TEST USE PARALLEL NO. 2 SPEC'S. SEC. 34. 14. MANHOLE TOPS IN UNIMPROVED RIGHTS-OF-WAY TO BE SIX INCHES ABOVE FINISHED GRADE. 15. THE CONTRACTOR SHALL NOTIFY THE CONSTRUCTION DIVISION BY TELEPHONE MADISON 9-4177, CITY/AREA AT LEAST TWENTY-FOUR HOURS BEFORE STARTING ANY WORK UNDER THIS CONTRACT. A STD. SPEC. DATED OCT. 10, 1960 APPLY IN CONSTRUCTION OF THIS PROJECT.

NOTE: SEE LETTER DATED JAN. 12, 1962 FROM DUTCH HOLZHAUER & ASSOC. ON FILE IN SANITATION DIVISION.

NO CHARGE FOR CONNECTIONS 7) 7) 1-15-62



NO CHARGE FOR CONNECTIONS DOUBLE VERTICAL SCALE

31607