

TO BE CONSTRUCTED IN
 CORD AVENUE &
 EGLISE AVENUE
 (TRACT NO. 26995)
 PRIVATE CONTRACT NO. 6107

W.S. 36
 1 SHEET OF 2 PAGES
 SCALE: VERT. 1" = 4' HORIZ. 1" = 40'
 DECEMBER, 1961
 PREPARED IN THE OFFICES OF
 TECHNOLOGICAL ENGINEERING CORP.

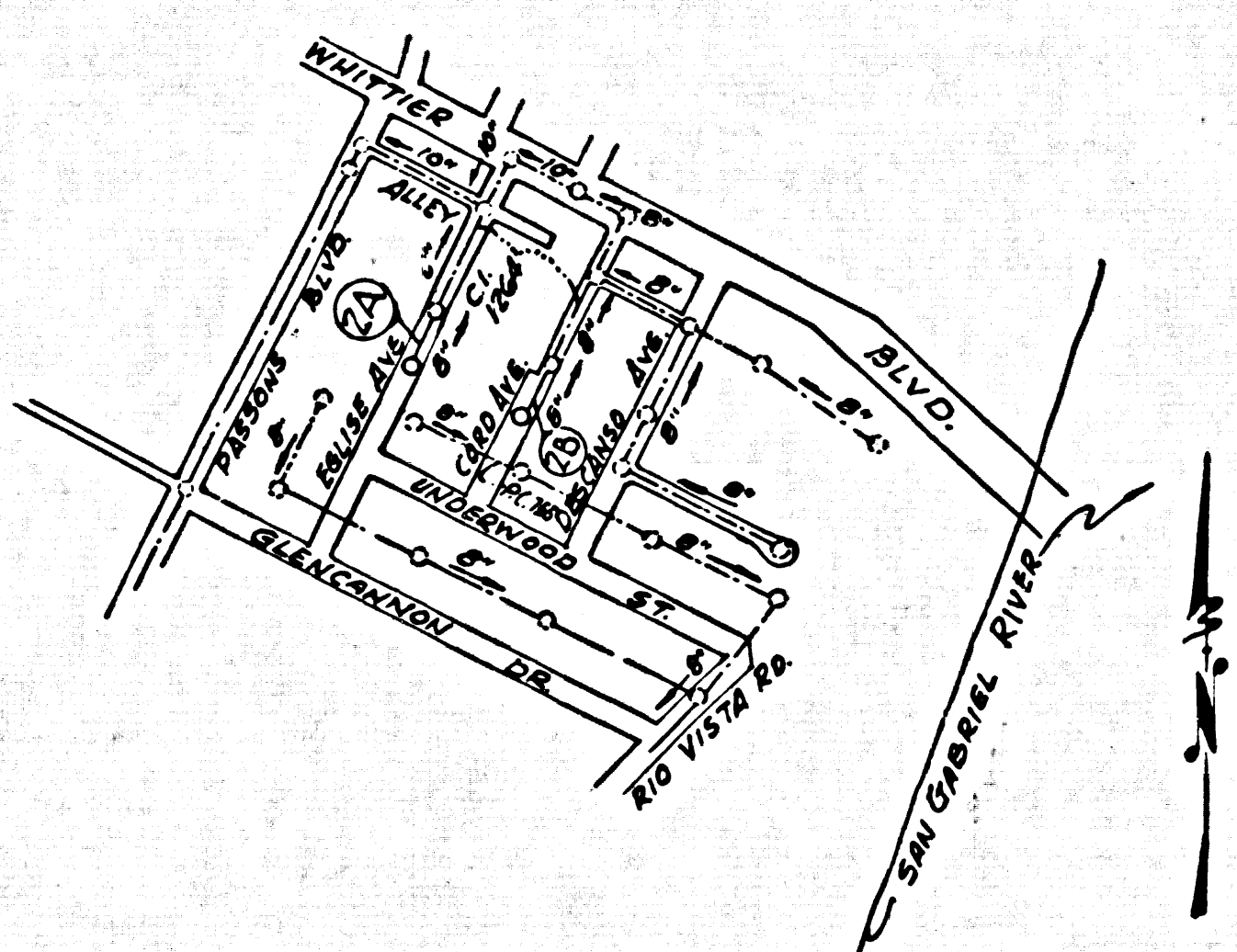
31633

By: *J.A. Patterson*
 REG. C. E. NO. 12410

FOR LEGEND SEE PLAN NO. S-A-64

BENCH MARK: SY 2482 ELEV. 173.380
 1955 BASE LINE QUAD. FD SQUARE HEAD SPIKE
 IN LEAD IN SOUTH CURB OF WHITTIER BLVD.
 2' 2" E. OF CURB RETURN AT S.E. CORNER
 OF PASSONS BLVD. & WHITTIER BLVD. (M&D P-145
 BASE LINE.)

- NOTES:
1. PROVIDE STAKES ON THE PROPERTY LINE OR PROPERTY LINES PRODUCED AT RIGHT ANGLES TO THE SEWER LINE AT THE CENTER LINE OF EACH MANHOLE.
 2. NO REPRESENTATIVE OF THE CITY ENGINEER WILL SURVEY OR LAY OUT ANY PORTION OF THE WORK.
 3. THE OWNER OR HIS AUTHORIZED REPRESENTATIVE SHALL FURNISH THE CITY ENGINEER WITH GRADE SHEETS AND STATIONING FOR ALL HOUSE LATERALS AND Y BRANCHES AND SHALL PROVIDE STAKES FOR THEM AT THEIR PROPER LOCATIONS WITH STATIONING PLAINLY MARKED. ANY CHANGE IN LOCATION SHALL BE REQUESTED IN WRITING BY THE OWNER OR HIS REPRESENTATIVE.
 4. THE PRIVATE ENGINEER SHALL FURNISH THE HOUSE LATERAL DEPTH AT THE PROPERTY LINE BELOW THE TOP OF CURB ELEVATION FOR EACH HOUSE LATERAL ON THE GRADE SHEET.
 5. NO REVISIONS SHALL BE MADE IN THESE PLANS WITHOUT THE APPROVAL OF THE CITY ENGINEER.
 6. USE STANDARD MANHOLE FRAMES AND COVERS, 5'-0" DIA.
 7. USE EXTRA STRENGTH PIPE. ALL PIPE IS STANDARD DEPTH.
 8. USE CEMENT MORTAR OR "WEDGE-LOCK" OR "SPED-SEAL" FOR ALL V.C.P. JOINTS PER SPECS, SECS. 36 & 48.
 9. RESURFACE ALL TRENCH WITHIN PAVED AREA TO MEET L.A. COUNTY ROAD DEPT. OR CALIF. STATE HIGHWAY REQUIREMENTS IN ACCORDANCE WITH PERMITS.
 10. ENCASE FOUR FEET OF SEWER AT POINTS OF INTERFERENCE WITH POLES, CASE III, 5-172.
 11. HOUSE LATERALS TO BE CONSTRUCTED WITH 1/4" RISE PER FOOT TO PROPERTY LINE.
 12. ALL STRUCTURES SHALL BE BRICK SEWER STRUCTURES, 5'-10" DIA.
 13. FOR ALLOWABLE LEAKAGE TEST USE FORMULA NO. 1, SPECS, SEC. 54.
 14. MANHOLE TOPS IN UNIMPROVED RIGHTS-OF-WAY TO BE SIX INCHES ABOVE FINISHED GRADE.
 15. THE CONTRACTOR SHALL NOTIFY THE CONSTRUCTION DIVISION BY TELEPHONE, MADISON 9-4147, 8:45 AM AT LEAST TWENTY-FOUR HOURS BEFORE STARTING ANY WORK UNDER THIS CONTRACT.
 16. STANDARD SPECIFICATIONS DATED OCTOBER 25, 1961 ON FILE IN THE CITY APPLY IN THE CONSTRUCTION OF THIS PROJECT.

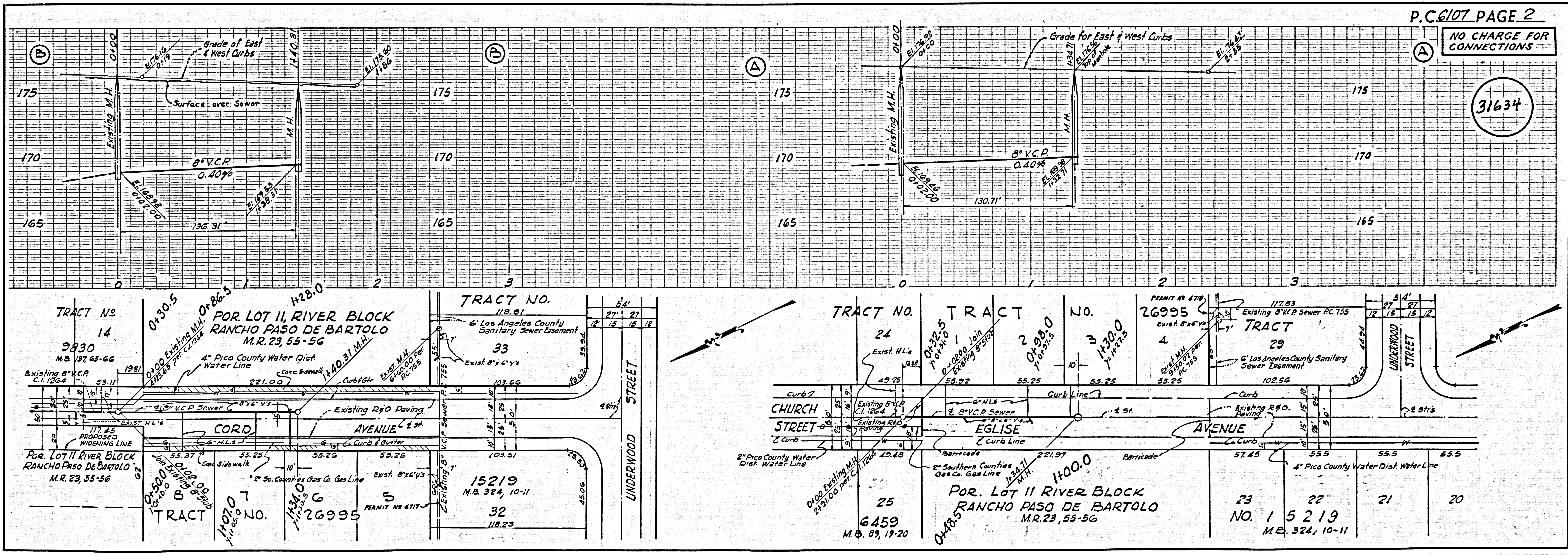


NOTE:
 LOTS 4 & 5 SERVED BY
 SEWERS IN P.C. 755.
 PERMIT Nos. 6717 & 6718

NO CHARGE FOR
 CONNECTIONS
William A. Highland
 2-25-62

NOTE:
 GRADES TO WHICH THIS IMPROVEMENT IS TO BE CONSTRUCTED ARE SHOWN ON PLANS AND PROFILES. GRADE POINTS FOR TOP OF CURB, CENTER LINE OF STREETS, OR CENTER LINE OF ALLEYS ARE SHOWN BY CIRCLES ON PROFILES. AT ALL POINTS BETWEEN DESIGNATED POINTS THE GRADE SHALL BE ESTABLISHED SO AS TO CONFORM TO A STRAIGHT LINE DRAWN BETWEEN SAID DESIGNATED POINTS.
 ELEVATIONS ARE IN FEET ABOVE U.S.C. & G.S. SEA LEVEL DATUM OF 1929.
 THIS DRAWING AND THE DATA HEREON ARE HEREBY MADE A PART OF THE SPECIFICATIONS.
 WORK SHALL BE CONSTRUCTED ACCORDING TO SPECIFICATIONS ON FILE IN THE OFFICE OF THE CITY ENGINEER AND SHALL BE PROSECUTED ONLY IN THE PRESENCE OF THE CITY ENGINEER.
 BEFORE WORK CAN BE STARTED, THE CONTRACTOR MUST OBTAIN A PERMIT TO EXCAVATE IN CITY STREETS FROM THE L.A. COUNTY ROAD DEPT., DISTRICT OFFICE NO. 4 AND MAKE A DEPOSIT WITH THE CITY OF PICO RIVERA 60% PASSION'S BOND TO BE SUFFICIENT TO COVER THE COST OF CONSTRUCTION INSPECTION AND RECORD PLANS.
 APPROVAL OF THIS PLAN BY THE CITY OF PICO RIVERA DOES NOT CONSTITUTE A REPRESENTATION AS TO THE ACCURACY OF THE LOCATION OF OR THE EXISTENCE OR NON-EXISTENCE OF ANY UNDERGROUND UTILITY PIPE, OR STRUCTURE WITHIN THE LIMITS OF THIS PROJECT. THIS NOTE APPLIES TO ALL PAGES.
 IF WORK IS TO BE DONE IN A STATE HIGHWAY, A PERMIT MUST BE OBTAINED FROM THE STATE OF CALIFORNIA, DIVISION OF HIGHWAYS, 128 SOUTH SPRING STREET.

CITY OF PICO RIVERA, CALIFORNIA
 APPROVED, JOHN A. LAMBIE, CITY ENGINEER APPROVED, J.D. PARRA, CHIEF ENGINEER
 CO. SAN. DIST. NO. 2
 BY: *Ricard E. H...* ASST. SANITATION ENGINEER BY: *L. J. ...* OFFICE ENGINEER
 CHECKED BY: *W. ...*
 OFFICE OF CITY ENGINEER, P.O. C. E. NO. 9406
 SUBMITTED BY: *John ...* 2-25-62
 LOS CERRITOS REGIONAL ENGINEER REG. C.E. 3871



NO CHARGE FOR CONNECTIONS

31634