

PALMDALE BLDG. DIST. NO. 8.1

PROFILE ALIGNMENT AND GRADE OF P.C. 6108
 SANITARY SEWERS PAGE 1
 TO BE CONSTRUCTED FOR J.N. 035742
 DOUBLE V TRAILER PARK

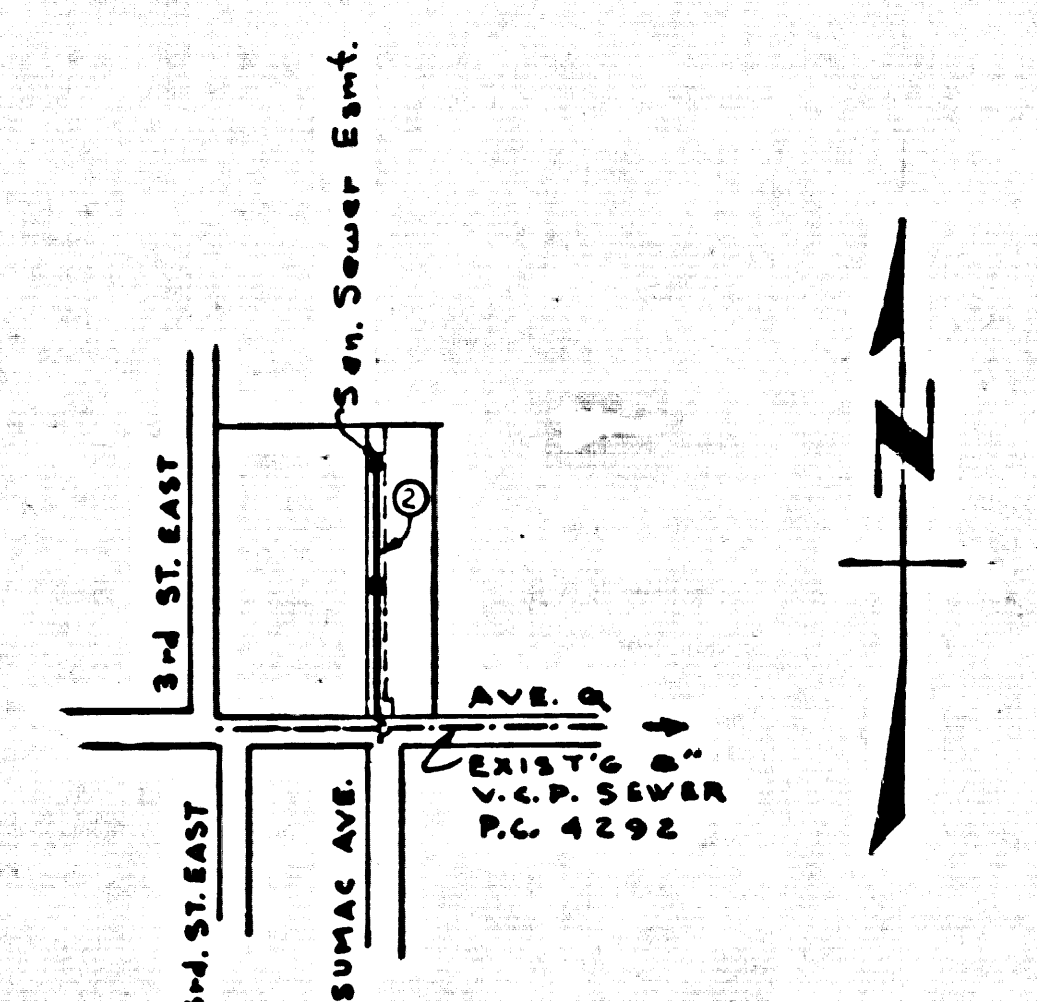
DN 18-34 ELEV. 2641.20 @ SB. 2410-38A
 AVE. @ 4th ST. EAST 12'E (13.4'S E INT.)
 A U.S.C. & G.S. TRIANGULATION STATION
 MARKED "PALMDALE 2, 1956"

- NOTES:
1. PROVIDE STAKES ON THE PROPERTY LINE OR PROPERTY LINES PRODUCED AT RIGHT ANGLES TO THE SEWER LINE AT THE CENTER LINE OF EACH MANHOLE.
 2. NO REPRESENTATIVE OF THE COUNTY ENGINEER WILL SURVEY OR LAY OUT ANY PORTION OF THE WORK.
 3. THE OWNER OR HIS AUTHORIZED REPRESENTATIVE SHALL FURNISH THE COUNTY ENGINEER WITH GRADE SHEETS AND STATIONING FOR ALL HOUSE LATERALS AND T BRANCHES AND SHALL PROVIDE STAKES FOR THEM AT THEIR PROPER LOCATIONS WITH STATIONING PLAINLY MARKED. ANY CHANGE IN LOCATION SHALL BE REQUESTED IN WRITING BY THE OWNER OR HIS REPRESENTATIVE.
 4. _____
 5. NO REVISIONS SHALL BE MADE IN THESE PLANS WITHOUT THE APPROVAL OF THE COUNTY ENGINEER.
 6. USE STANDARD MANHOLE FRAMES AND COVERS, S-117, EXCEPT AS NOTED.
 7. _____ USE BEST PRACTICE STRENGTH PIPE, ALL PIPE STANDARD DEPTH, EXCEPT AS NOTED.
 8. _____ "WEDGE-LOCK" OR "SPREAD-SEAL" FOR ALL V.C.P. JOINTS PER SPECS., SECS. 36 & 37.
 9. RESURFACE ALL TRENCH WITHIN PAVED AREA TO MEET L.A. COUNTY ROAD DEPT. OR CALIF. STATE HIGHWAY REQUIREMENTS IN ACCORDANCE WITH PERMITS.
 10. ENCASE FOUR FEET OF SEWER AT POINTS OF INTERFERENCE WITH POLES, CASE III, S-172.
 11. _____
 12. ALL STRUCTURES SHALL BE BRICK SEWER STRUCTURES, S-104, EXCEPT AS NOTED.
 13. FOR ALLOWABLE LEAKAGE TEST USE FORMULA NO. _____, SPECS., SEC. 34.
 14. MANHOLE TOPS IN UNIMPROVED RIGHTS-OF-WAY TO BE SIX INCHES ABOVE FINISHED GRADE.
 15. THE CONTRACTOR SHALL NOTIFY THE CONSTRUCTION DIVISION BY TELEPHONE, MADISON 9-07, EXT. 8151 AT LEAST TWENTY-FOUR HOURS BEFORE STARTING ANY WORK UNDER THIS CONTRACT.
 16. SPECIFICATIONS DATED 06/22, 1961 APPLY IN THE CONSTRUCTION OF THIS PROJECT.

PRIVATE CONTRACT NO. 6108

W.S. 65
 1 SHEET, 2 PAGES
 SCALE: VERT. 1"=4' HORIZ. 1"=40' APRIL, 1962
 PREPARED IN THE OFFICES OF
 MARVIN W. HOPEWELL
 BY *Marvin W. Hopewell*
 REG. C. E. NO. 11785
 FOR LEGEND SEE PLAN NO. S-A-64

32161



INDEX MAP
 SCALE 1"=600'
 P.C. NO. 6108

COLLECT CHARGES AS INDICATED
Marvin W. Hopewell 5-19-62

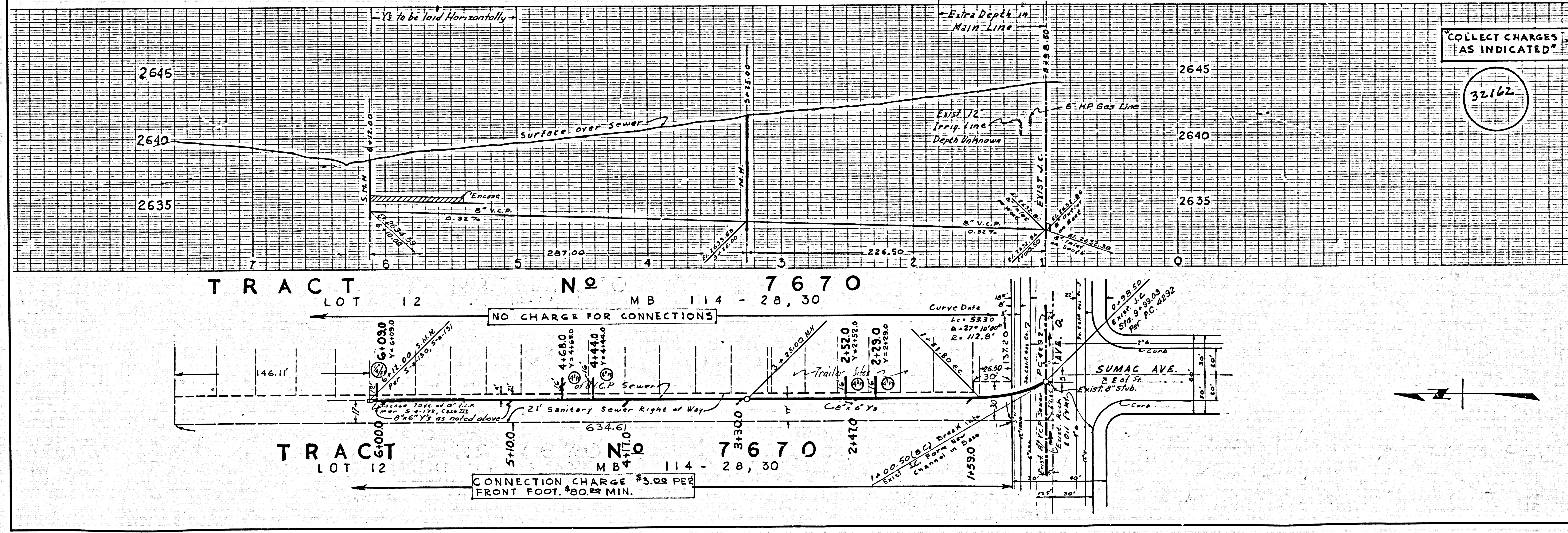
NO CONNECTIONS FOR THE DISPOSAL OF INDUSTRIAL WASTES SHALL BE MADE TO SEWERS SHOWN ON THESE DRAWINGS WITHOUT WRITTEN PERMISSION FROM THE CHIEF ENGINEER AND GENERAL MANAGER OF THE COUNTY SANITATION DISTRICTS.

NOTE:
 GRADES TO WHICH THIS IMPROVEMENT IS TO BE CONSTRUCTED ARE SHOWN ON PLANS AND PROFILES. GRADE POINTS FOR TOP OF CURBS, CENTER LINE OF STREETS, OR CENTER LINE OF ALLEYS ARE SHOWN BY CIRCLES ON PROFILES. AT ALL POINTS BETWEEN DESIGNATED POINTS THE GRADE SHALL BE ESTABLISHED SO AS TO CONFORM TO A STRAIGHT LINE DRAWN BETWEEN SAID DESIGNATED POINTS.
 ELEVATIONS ARE IN FEET ABOVE U.S.C. & G.S. SEA LEVEL DATUM OF 1929.
 THIS DRAWING AND THE DATA HEREON ARE HEREBY MADE A PART OF THE SPECIFICATIONS.
 WORK SHALL BE CONSTRUCTED ACCORDING TO SPECIFICATIONS ON FILE IN THE OFFICE OF THE COUNTY ENGINEER AND SHALL BE PROSECUTED ONLY IN THE PRESENCE OF THE COUNTY ENGINEER.
 BEFORE WORK CAN BE STARTED, THE CONTRACTOR MUST OBTAIN A PERMIT TO EXCAVATE IN COUNTY STREETS FROM THE L. A. COUNTY ROAD DEPT., DISTRICT OFFICE NO. 5, AND PAY A FEE TO THE COUNTY ENGINEER, ROOM 310, 108 WEST 57th ST. SUFFICIENT TO COVER THE COST OF CONSTRUCTION INSPECTION AND RECORD PLANS.
 APPROVAL OF THIS PLAN BY THE COUNTY OF LOS ANGELES DOES NOT CONSTITUTE A REPRESENTATION AS TO THE ACCURACY OF THE LOCATION OF OR THE EXISTENCE OR NON-EXISTENCE OF ANY UNDERGROUND UTILITY PIPE, OR STRUCTURE WITHIN THE LIMITS OF THIS PROJECT. THIS NOTE APPLIES TO ALL PAGES.
 IF WORK IS TO BE DONE IN A STATE HIGHWAY, A PERMIT MUST BE OBTAINED FROM THE STATE OF CALIFORNIA, DIVISION OF HIGHWAYS, 126 SOUTH SPRING STREET.

COUNTY OF LOS ANGELES, CALIFORNIA

APPROVED, JOHN A. LAMBIE, COUNTY ENGINEER APPROVED, J.B. PARKHURST, CHIEF ENGINEER
 BY *John A. Lambie* BY *J.B. Parkhurst*
 A S.E.T. SANITATION ENGINEER A SAN. DIST. NO. 20 OFFICE ENGINEER
 CHECKED BY *J.K. Underhill*
 OFFICE OF COUNTY ENGINEER, REG. C. E. NO. 2404
 SUBMITTED BY *Carroll D. Smith*
 ACTING REGIONAL ENGINEER

P.C. 6108 PAGE 2



COLLECT CHARGES AS INDICATED

32162

NO CHARGE FOR CONNECTIONS
 CONNECTION CHARGE \$3.00 PER FRONT FOOT, \$80.00 MIN.