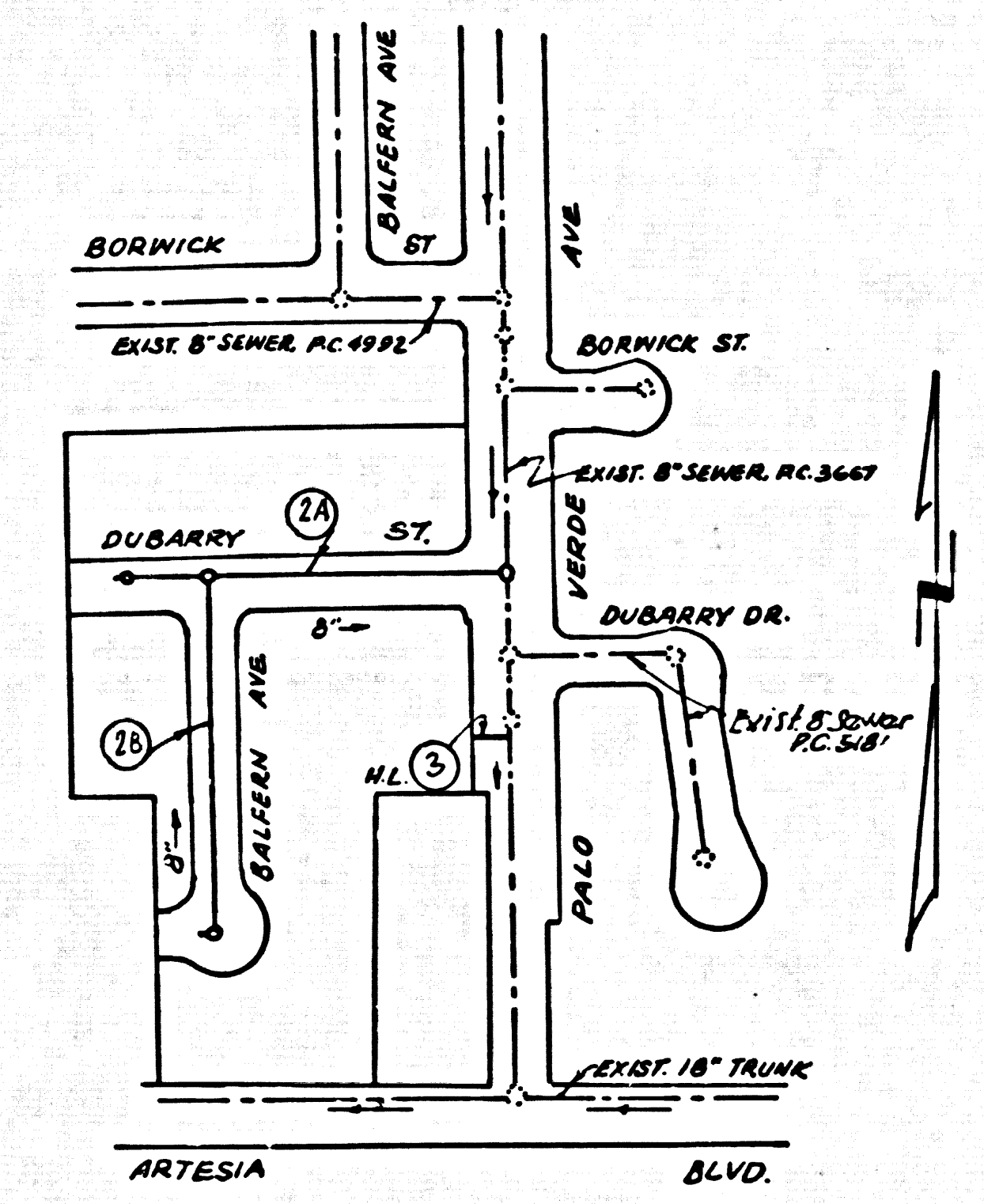


B.M. 5Y1492 Elev. 66.078  
 L&T W end conc. hd.w. 130' N. & 45' E  
 W. & int. Artesia Blvd. & Palo Verde Ave  
 Bellflower Quad 1955



INDEX MAP  
 P.C. 6112  
 TRACT No 26994  
 SCALE 1"=200'

**PRIVATE ENGINEER'S  
 NOTICE TO CONTRACTOR**

The address and location of any underground utility pipes or structures shown on these plans are obtained by a review of the available records. To the best of our knowledge there are no existing utilities except as shown on this map.  
 The Contractor is required to take due precautionary measures to protect the utility lines shown and to offset their cost of removal or relocation on this drawing.

**BELFLOWER BLDG. DIST. NO. 4.07**

- NOTES:**
1. PROFILE STAKES ON THE PROPERTY LINE OR PROPERTY LINES PRODUCED AT RIGHT ANGLES TO THE SEWER LINE AT THE CENTER LINE OF EACH MANHOLE.
  2. NO REPRESENTATIVE OF THE CITY ENGINEER WILL SURVEY OR LAY OUT ANY PORTION OF THE WORK.
  3. THE OWNER OR HIS AUTHORIZED REPRESENTATIVE SHALL FURNISH THE CITY ENGINEER WITH GRADE SHEETS AND STATIONING FOR ALL HOUSE LATERALS AND Y BRANCHES AND SHALL PROVIDE STAKES FOR THEM AT THEIR PROPER LOCATIONS WITH STATIONING PLAINLY MARKED. ANY CHANGE IN LOCATION SHALL BE REQUESTED IN WRITING BY THE OWNER OR HIS REPRESENTATIVE.
  4. THE PRIVATE ENGINEER SHALL FURNISH THE HOUSE LATERAL DEPTH AT THE PROPERTY LINE BELOW THE TOP OF CURB ELEVATION FOR EACH HOUSE LATERAL ON THE GRADE SHEET.
  5. NO REVISIONS SHALL BE MADE IN THESE PLANS WITHOUT THE APPROVAL OF THE CITY ENGINEER.
  6. USE STANDARD MANHOLE FRAMES AND COVERS, 5-117, ENCL-AS-NOTED.
  7. USE EXTRA STRENGTH PIPE. ALL PIPE IS STANDARD DESIGN.
  8. USE "WEDGE-LOCK" OR "SPEED-SEAL" FOR ALL V.C.P. JOINTS PER SPECS., SECS. 24 & 41.
  9. REINFORCE ALL TRENCH WITHIN PAVED AREA TO MEET CALIFORNIA ROAD DEPT. OR CALIF. STATE HIGHWAY REQUIREMENTS IN ACCORDANCE WITH PERMITS.
  10. ENCASE FOUR FEET OF SEWER AT POINTS OF INTERFERENCE WITH POLES, CASE III, 5-172.
  11. HOUSE LATERALS TO BE CONSTRUCTED WITH INVERTS AT PROPERTY LINE 6 FEET BELOW CURB GRADE EXCEPT AS NOTED.
  12. ALL STRUCTURES SHALL BE BRICK SEWER STRUCTURES, 5-104, ENCL-AS-NOTED.
  13. FOR ALLOWABLE LEAKAGE TEST USE FORMULA NO. 1 SPECS., SEC. 54.
  14. MANHOLE TOPS IN UNIMPROVED RIGHTS-OF-WAY TO BE SIX INCHES ABOVE FINISHED GRADE.
  15. THE CONTRACTOR SHALL NOTIFY THE CONSTRUCTION-SPEECH-BRAND-BRAND BY TELEPHONE, MADISON 9-4741, EXT. 501 AT LEAST TWENTY-FOUR HOURS BEFORE STARTING ANY WORK UNDER THIS CONTRACT.
  16. STANDARD SPECIFICATIONS DATED OCT. 25, 1961 ON FILE IN THE CITY, SHALL APPLY IN THE CONSTRUCTION OF THIS PROJECT.

NO CHARGE FOR CONNECTION  
*J. K. W. 12-62*

NO CONNECTIONS FOR THE DISPOSAL OF INDUSTRIAL WASTES SHALL BE MADE TO SEWERS SHOWN ON THESE DRAWINGS WITHOUT WRITTEN PERMISSION FROM THE CHIEF ENGINEER AND GENERAL MANAGER OF THE COUNTY SANITATION DISTRICTS.

PROFILE ALIGNMENT AND GRADE OF **P.C. 6112**  
**SANITARY SEWERS PAGE 1**  
 TO BE CONSTRUCTED IN  
**TRACT No 26994**

**PRIVATE CONTRACT NO. 6112**

W.S. 33  
 2 SHEETS; 3 PAGES  
 SCALE: VERT. 1"=4' JAN, 1962  
 HORIZ. 1"=40'  
 PREPARED IN THE OFFICES OF  
**OLSON SURVEYING SERVICE, INC.**

By: *Smith & Phillips*  
 REG. C. E. NO. 2820

FOR LEGEND SEE PLAN NO. S-A-64

**NOTE:**  
 GRADES TO WHICH THIS IMPROVEMENT IS TO BE CONSTRUCTED ARE SHOWN ON PLANS AND PROFILES. GRADE POINTS FOR TOP OF CURBS, CENTER LINE OF STREETS, OR CENTER LINE OF ALLEYS ARE SHOWN BY CIRCLES ON PROFILES. AT ALL POINTS BETWEEN DESIGNATED POINTS THE GRADE SHALL BE ESTABLISHED SO AS TO CONFORM TO A STRAIGHT LINE DRAWN BETWEEN SAID DESIGNATED POINTS.  
 ELEVATIONS ARE IN FEET ABOVE U.S.C. & G.S. SEA LEVEL DATUM OF 1929.  
 THIS DRAWING AND THE DATA HEREON ARE HEREBY MADE A PART OF THE SPECIFICATIONS.  
 WORK SHALL BE CONSTRUCTED ACCORDING TO SPECIFICATIONS ON FILE IN THE OFFICE OF THE CITY ENGINEER AND SHALL BE PROSECUTED ONLY IN THE PRESENCE OF THE CITY ENGINEER.  
 BEFORE WORK CAN BE STARTED, THE CONTRACTOR MUST OBTAIN A PERMIT TO EXCAVATE IN CITY STREETS FROM THE BELLFLOWER ROAD DEPT. AND MAKE A DEPOSIT WITH THE CITY OF BELLFLOWER \$25.00 TO COVER THE COST OF CONSTRUCTION INSPECTION AND RECORD PLANS.  
 APPROVAL OF THIS PLAN BY THE CITY OF BELLFLOWER DOES NOT CONSTITUTE A REPRESENTATION AS TO THE ACCURACY OF THE LOCATION OF OR THE EXISTENCE OR NON-EXISTENCE OF ANY UNDERGROUND UTILITY PIPE, OR STRUCTURE WITHIN THE LIMITS OF THIS PROJECT. THIS NOTE APPLIES TO ALL PAGES.  
 IF WORK IS TO BE DONE IN A STATE HIGHWAY, A PERMIT MUST BE OBTAINED FROM THE STATE OF CALIFORNIA, DIVISION OF HIGHWAYS, 120 SOUTH SPRING STREET.

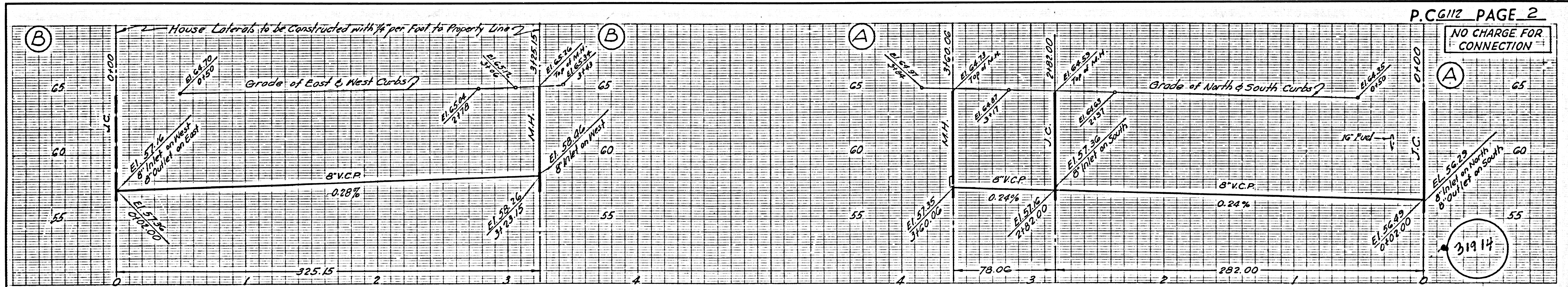
**CITY OF BELLFLOWER, CALIFORNIA**

APPROVED, JOHN A. LAMBE, CITY ENGINEER APPROVED, J.D. FARKHUEB, CHIEF ENGINEER  
 CO. SAN. DIST. NO. 2

By: *Richard E. Olson* ASST. SANITATION ENGINEER By: *W. J. Williams* OFFICE ENGINEER

CHECKED BY: *J. K. W. 12-62*  
 OFFICE OF CITY ENGINEER, REG. C. E. NO. 2846

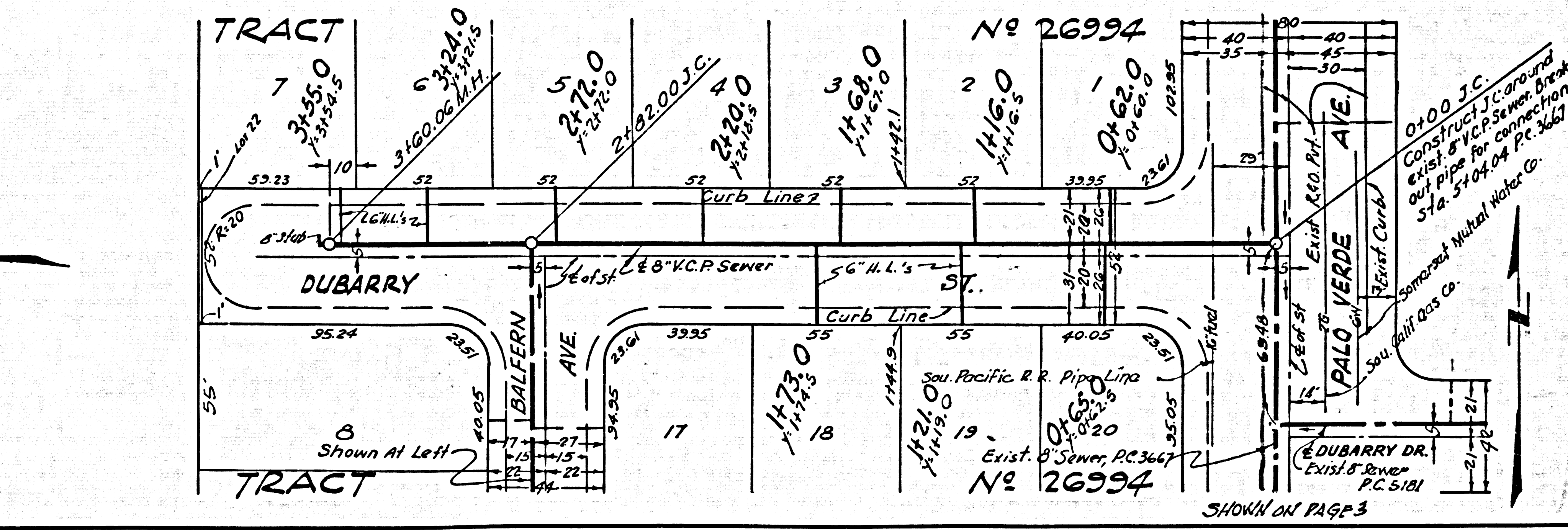
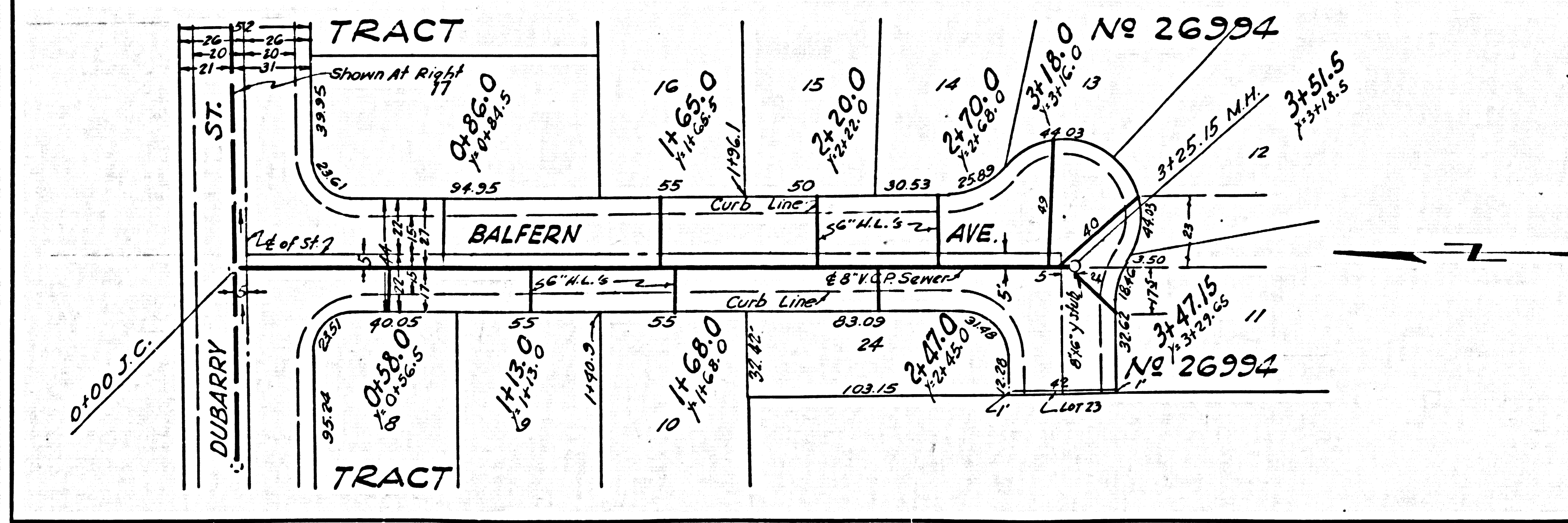
SUBMITTED BY: *John A. Esten* LOS CERRITOS REGIONAL ENGINEER, REG. C.E. 3871



**P.C. 6112 PAGE 2**

NO CHARGE FOR CONNECTION

31914



SHOWN ON PAGE 3

NO CHARGE FOR CONNECTION

31115

