

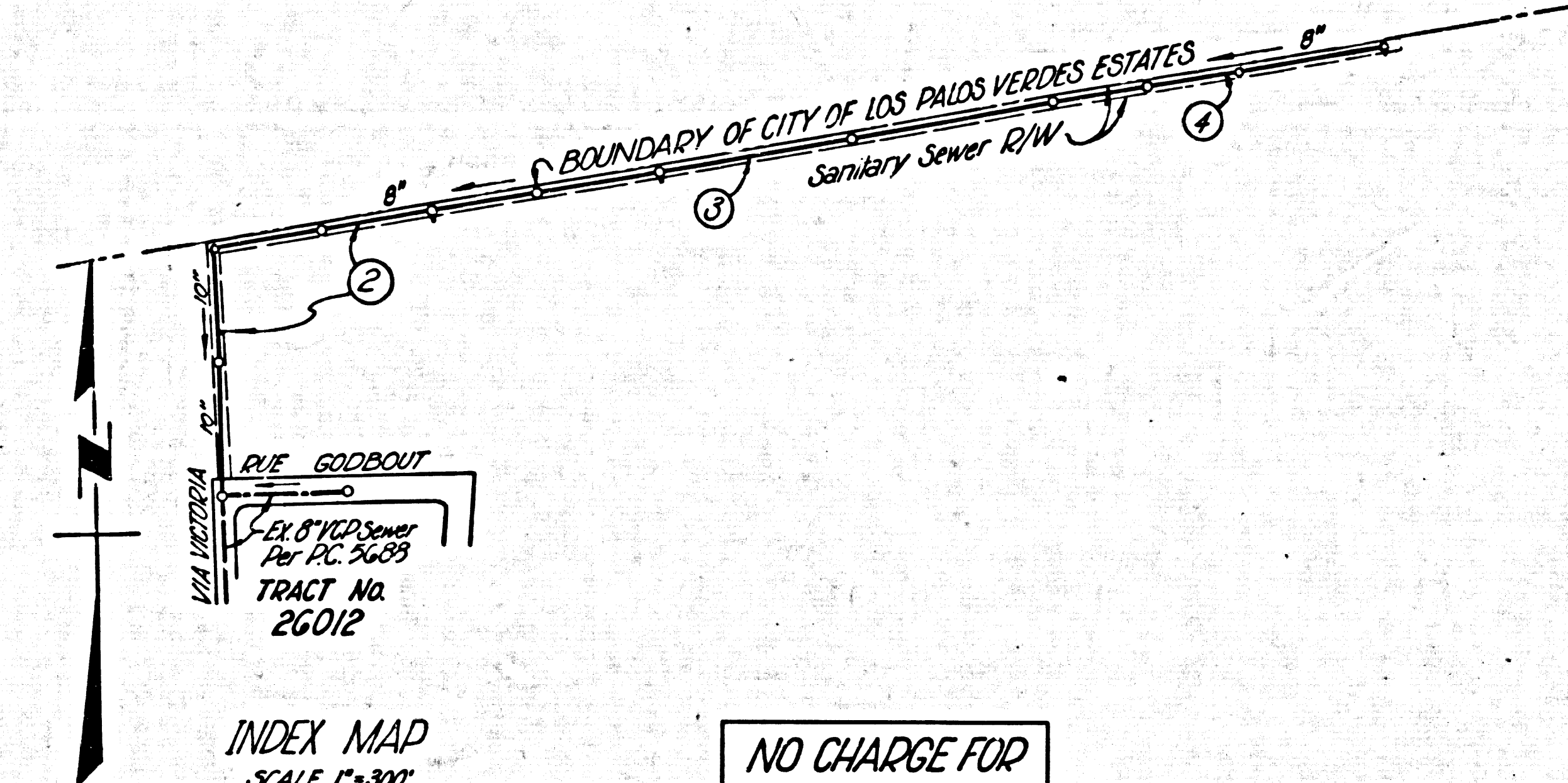
BENCH MARK
 B.M.S.K. No. 4391-A 4391-A Road D.D.B.M.
 Top in N. curb 228ST Rd ± 2" W. Curb
 Basin opening ± 40' N. & WEST Rd ±
 ± 78' East & HAWTHORNE Blvd.
 El. 933.340

DOUBLE SCALE
 LOMITA BLDG. DIST. NO. 12

PROFILE ALIGNMENT AND GRADE OF P.C. 6114
 SANITARY SEWERS PAGE 1
 TO BE CONSTRUCTED IN
 VIA VICTORIA (PROD.) AND
 EASEMENT EASTERLY
 PRIVATE CONTRACT NO. 6114
 W.S. 27
 2 SHEETS; 4 PAGES
 SCALE: VERT. 1" = 5' HORIZ. 1" = 40'
 FEB., 1962
 PREPARED IN THE OFFICES OF
 ENGINEERING SERVICE CORPORATION
 BY: *C. J. Smith*
 REG. P. E. NO. 3692

- NOTES:
- PROVIDE STAKES ON THE PROPERTY LINE OR PROPERTY LINES PRODUCED AT RIGHT ANGLES TO THE SEWER LINE AT THE CENTER LINE OF EACH MANHOLE.
 - NO REPRESENTATIVE OF THE COUNTY ENGINEER WILL SURVEY OR LAYOUT ANY PORTION OF THE WORK.
 - THE OWNER OR HIS AUTHORIZED REPRESENTATIVE SHALL FURNISH THE COUNTY ENGINEER WITH GRADE SHEETS AND STATIONING FOR ALL HOUSE LATERALS AND Y BRANCHES AND SHALL PROVIDE STAKES FOR THEM AT THEIR PROPER LOCATIONS WITH STATIONING PLAINLY MARKED. ANY CHANGE IN LOCATION SHALL BE REQUESTED IN WRITING BY THE OWNER OR HIS REPRESENTATIVE.
 - NO REVISIONS SHALL BE MADE IN THESE PLANS WITHOUT THE APPROVAL OF THE COUNTY ENGINEER.
 - USE STANDARD MANHOLE FRAMES AND COVERS, S.A. 117, EXCEPT AS NOTED.
 - USE EXTRA STRENGTH PIPE, ALL "PIPE IN STANDARD DEPTH EXCEPT AS NOTED."
 - USE CEMENT MORTAR OR "WEDGE LOCK" OR "SPYED SEAL" FOR ALL V.C.P. JOINTS PER SPEC'S SEC'S 38 & 40
 - RESURFACE ALL TRENCH WITHIN PAVED AREA TO MEET L. A. COUNTY ROAD DEPT., OR CALIF. STATE HIGHWAY DEPT. REQUIREMENTS IN ACCORDANCE WITH PERMITS.
 - ENCASE FOUR FEET OF SEWER AT POINTS OF INTERFERENCE WITH POLES, S.A. 172 CASE III
 - ALL STRUCTURES SHALL BE BRICK SEWER STRUCTURES, S.A. 104.
 - FOR ALLOWABLE LEAKAGE TEST USE FORMULA NO. 1, SPEC'S, SEC. 54
 - MANHOLE TOPS IN UNIMPROVED RIGHTS-OF-WAY TO BE 6" ABOVE FINISHED GRADE.
 - SPECIFICATIONS DATED OCT. 25 1961 APPLY IN THE CONSTRUCTION OF THIS PROJECT.
 - THE CONTRACTOR SHALL NOTIFY THE CONSTRUCTION DIVISION BY TELEPHONE, MADISON 8-4747 EXT. 8181 AT LEAST TWENTY FOUR HOURS BEFORE STARTING ANY WORK UNDER THIS CONTRACT.

NOTE:
 GRADES TO WHICH THIS IMPROVEMENT IS TO BE CONSTRUCTED ARE SHOWN ON PLANS AND PROFILES. GRADE POINTS FOR TOP OF CURBS, CENTER LINE OF STREETS, OR CENTER LINE OF ALLEYS ARE SHOWN BY CIRCLES ON PROFILES AT ALL POINTS BETWEEN DESIGNATED POINTS THE GRADE SHALL BE ESTABLISHED SO AS TO CONFORM TO A STRAIGHT LINE DRAWN BETWEEN SAID DESIGNATED POINTS.
 ELEVATIONS ARE IN FEET ABOVE U.S.C. & G.S. SEA LEVEL DATUM OF 1929.
 THIS DRAWING AND THE DATA HEREON ARE HEREBY MADE A PART OF THE SPECIFICATIONS.
 WORK SHALL BE CONSTRUCTED ACCORDING TO SPECIFICATIONS ON FILE IN THE OFFICE OF THE COUNTY ENGINEER AND SHALL BE PROSECUTED ONLY IN THE PRESENCE OF THE COUNTY ENGINEER.
 BEFORE WORK CAN BE STARTED, THE CONTRACTOR MUST OBTAIN A PERMIT TO EXCAVATE IN COUNTY STREETS FROM THE L. A. COUNTY ROAD DEPT., INTERCITY DEPT. AND PAY A FEE TO THE COUNTY ENGINEER, ROOM 310, COUNTY ENGINEER BLDG. JOB WEST 2ND STREET. SUFFICIENT TO COVER THE COST OF CONSTRUCTION INSPECTION AND RECORD PLANS.
 APPROVAL OF THIS PLAN BY THE COUNTY OF LOS ANGELES DOES NOT CONSTITUTE A REPRESENTATION AS TO THE ACCURACY OF THE LOCATION OF OR THE EXISTENCE OR NON-EXISTENCE OF ANY UNDERGROUND UTILITY PIPE, OR STRUCTURE WITHIN THE LIMITS OF THIS PROJECT. THIS NOTE APPLIES TO ALL PAGES.
 IF WORK IS TO BE DONE IN A STATE HIGHWAY, A PERMIT MUST BE OBTAINED FROM THE STATE OF CALIFORNIA, DIVISION OF HIGHWAYS, 120 SOUTH SPRING STREET.



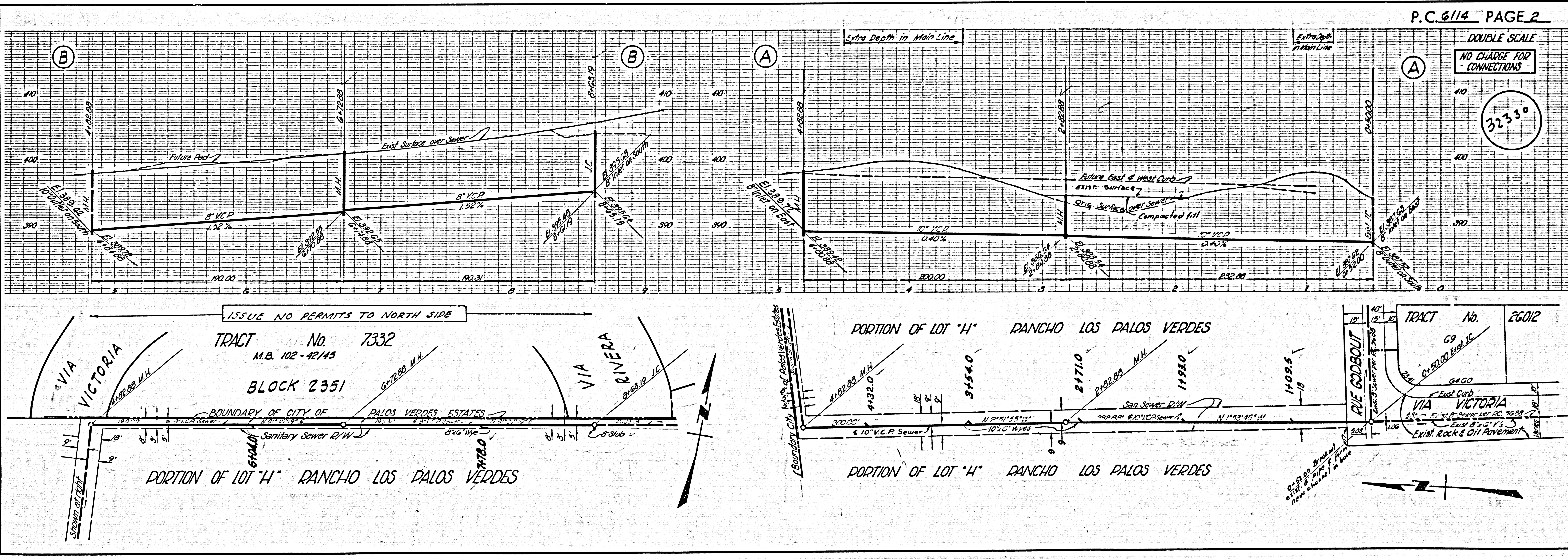
NO CHARGE FOR CONNECTIONS
Lustig 4-23-62

REVISED Removed encasement 54 2+0 to 2+82 and Y's on West side of Sewer page 2, sec. 4
 Approved: *Edward J. Smith*
 Reg. E.C. No. 7267

ENGINEERING SERVICE CORPORATION 1127 W. WASHINGTON BLVD. LOS ANGELES 15, CALIF. RI. 9-7281	
REVISIONS	TRACED BY: <i>F.H.B.</i>
	DES'G'D BY: <i>F.K.K.</i>
	CK'D BY:
	SUBMITTED:
SUB STRUCTURES OK'D	
W. O. NO.	DWG. NO.
7303-15	Jan. 1962
DATE	SCALE
	1" = 40'
L. S.	P. B.
L.L.	600

COUNTY OF LOS ANGELES, CALIFORNIA
 APPROVED, J.D. PARKHART, CHIEF ENGINEER
 APPROVED, JOHN A. LAMBIE, COUNTY ENGINEER
 BY: *P. E. Smith* ASST. SANITATION ENGINEER
 BY: *J. Parkhart* CHIEF ENGINEER
 CHECKED BY: *Edward J. Smith*
 OFFICE OF COUNTY ENGINEER, P.O. BOX 10443
 Submitted: *Jack C. Lansing*
 Palos Verdes - Centinela Valley Regional Engineer

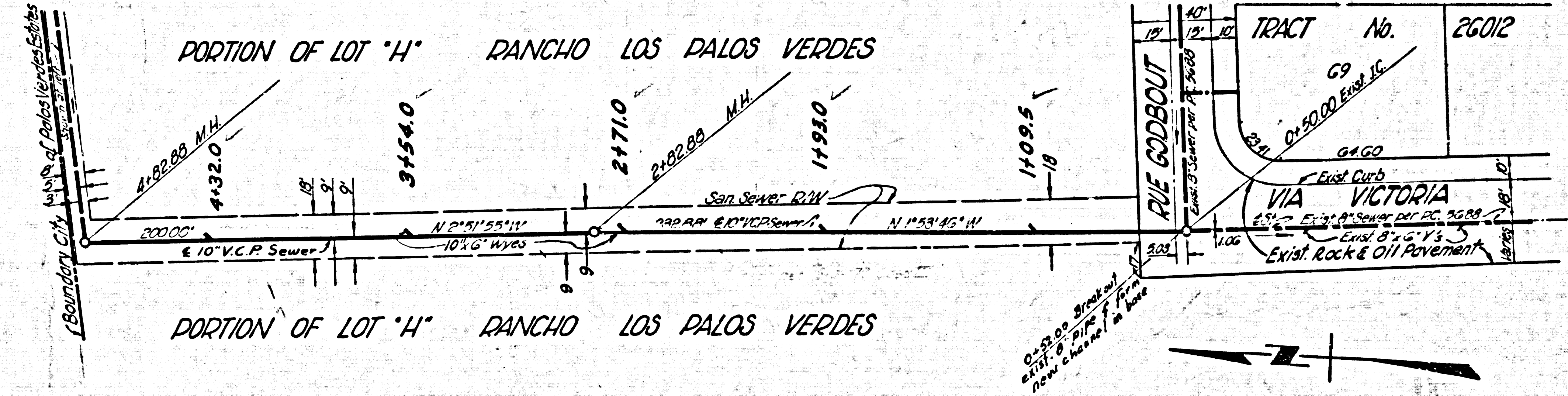
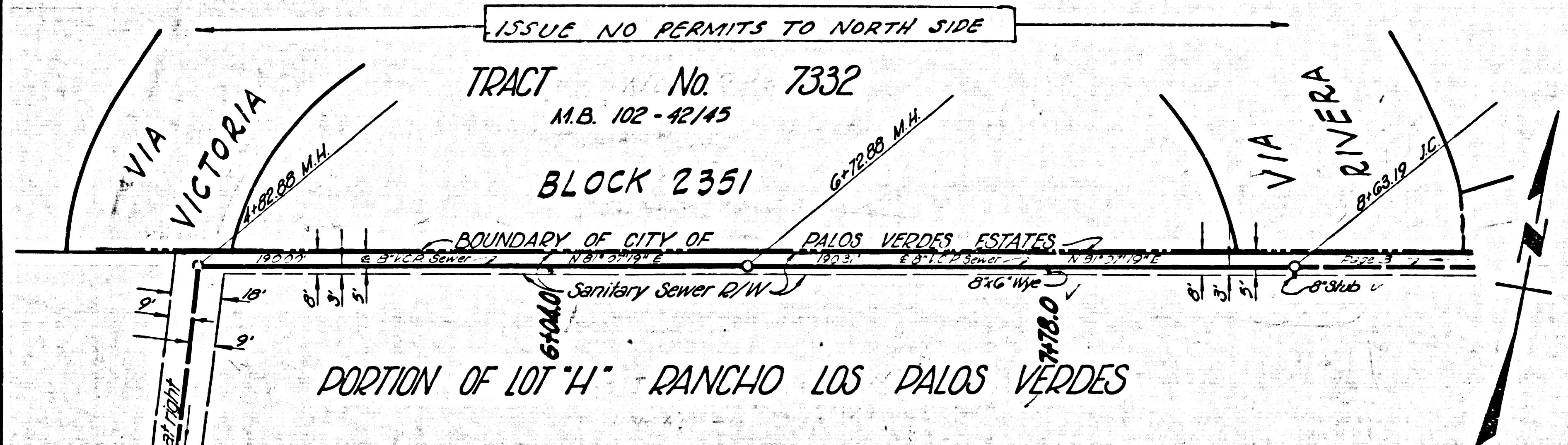
PRIVATE ENGINEERS
 NOTICE TO CONTRACTOR
 THE EXISTENCE AND LOCATION OF ANY UNDERGROUND UTILITY PIPES OR STRUCTURES SHOWN ON THESE PLANS ARE OBTAINED BY A RESEARCH OF THE AVAILABLE RECORDS. TO THE BEST OF OUR KNOWLEDGE THERE ARE NO EXISTING UTILITIES EXCEPT AS SHOWN ON THIS MAP. THE CONTRACTOR IS REQUIRED TO TAKE PRECAUTIONARY MEASURES TO PROTECT THE UTILITY LINES SHOWN AND ANY OTHER LINES NOT OF RECORD OR NOT SHOWN ON THIS DRAWING.



P.C. 6114 PAGE 2

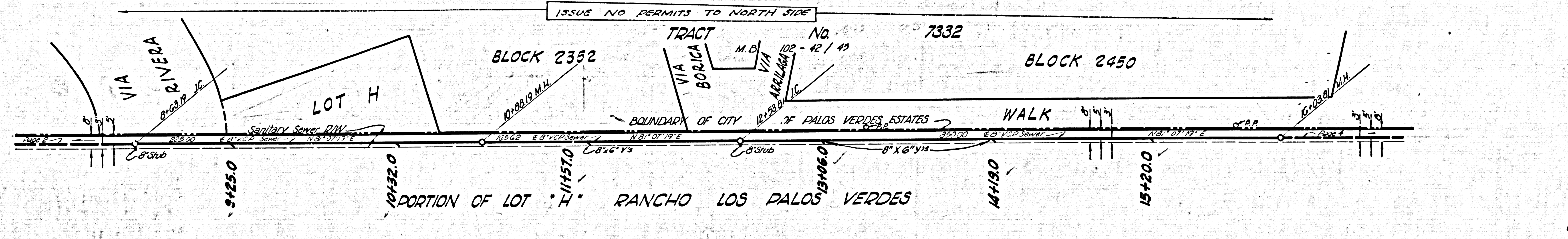
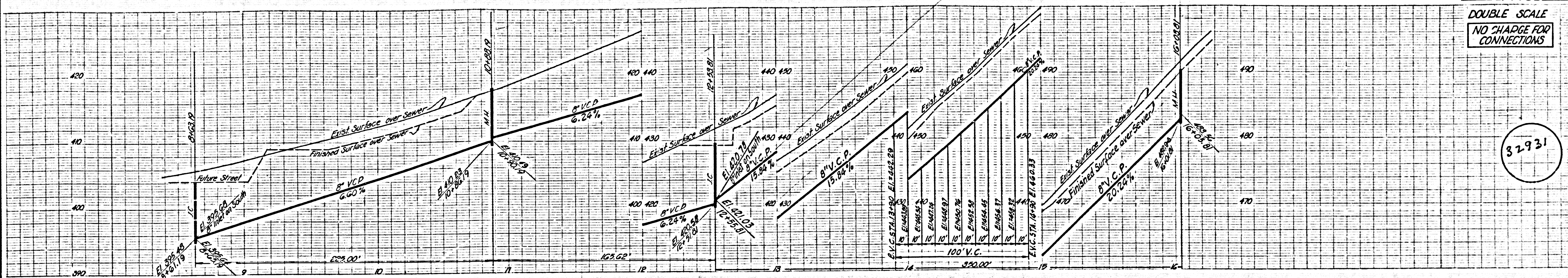
DOUBLE SCALE
 NO CHARGE FOR CONNECTIONS

32330



DOUBLE SCALE
NO CHARGE FOR CONNECTIONS

32931



DOUBLE SCALE
NO CHARGE FOR CONNECTIONS

32332

