

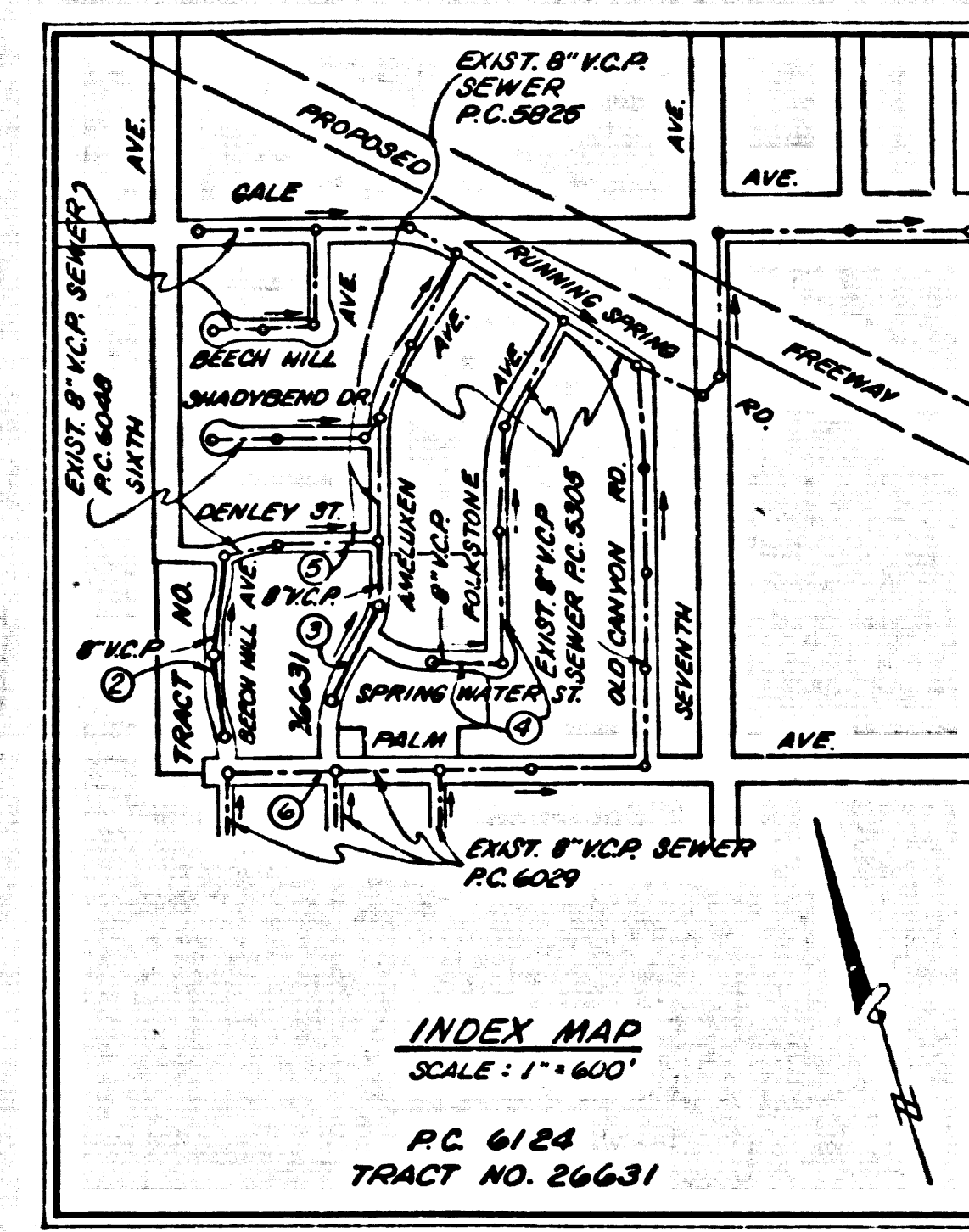
DOUBLE SCALE  
PUENTE BLDG. DIST. NO. 2

PROFILE ALIGNMENT AND GRADE OF P.C. 6124  
SANITARY SEWERS PAGE 1  
TO BE CONSTRUCTED IN J.N. 0357.52

TRACT NO. 26631  
PRIVATE CONTRACT NO. 6124

W.S. 37  
3 SHEETS; 6 PAGES  
SCALE: VERT. 1"=4' HORIZ. 1"=40'  
JANUARY, 1962  
PREPARED IN THE OFFICES OF

WALSH-FORKERT CIVIL ENGINEER, INC.  
By: *James Walsh*  
REG. C. E. NO. 6371  
FOR LEGEND SEE PLAN NO. S-A-64



NOTE: NUMBERS IN CIRCLES INDICATE PAGE NUMBERS

**BENCH MARK**  
S.G. 1592, SET 1 & 2, NEAR N.W. COR. OF CORC. OR TO HOUSE FINISH PALM AVE @ 25' E. COR. SEVENTH AVE. 100' E. & 27' S. OF E. INT. ELEV. 400.086, WHITTIER ROAD 1955.

- NOTES:
1. PROVIDE STAKES ON THE PROPERTY LINE OR PROPERTY LINES PRODUCED AT RIGHT ANGLES TO THE SEWER LINE AT THE CENTER LINE OF EACH MANHOLE.
  2. NO REPRESENTATIVE OF THE COUNTY ENGINEER WILL SURVEY OR LAY OUT ANY PORTION OF THE WORK.
  3. THE OWNER OR HIS AUTHORIZED REPRESENTATIVE SHALL FURNISH THE COUNTY ENGINEER WITH GRADE SHEETS AND STATIONING FOR ALL HOUSE LATERALS AND Y-BRANCHES AND SHALL PROVIDE STAKES FOR THEM AT THEIR PROPER LOCATIONS WITH STATIONING PLAINLY MARKED. ANY CHANGE IN LOCATION SHALL BE REQUESTED IN WRITING BY THE OWNER OR HIS REPRESENTATIVE.
  4. THE PRIVATE ENGINEER SHALL FURNISH THE HOUSE LATERAL DEPTH AT THE PROPERTY LINE BELOW THE TOP OF CURB ELEVATION FOR EACH HOUSE LATERAL ON THE GRADE SHEET.
  5. NO REVISIONS SHALL BE MADE IN THESE PLANS WITHOUT THE APPROVAL OF THE COUNTY ENGINEER.
  6. USE STANDARD MANHOLE FRAMES AND COVERS, S-117.
  7. USE EXTRA STRENGTH PIPE. ALL PIPE STANDARD DEPTH EXCEPT AS NOTED.
  8. USE CEMENT MORTAR OR "WEDGE-LOCK" OR "SPEED-SEAL" FOR ALL Y.C.P. JOINTS PER SPECS. SECS. 34 & 48.
  9. RESURFACE ALL TRENCH WITHIN PAVED AREA TO MEET L.A. COUNTY ROAD DEPT. OR CALIF. STATE HIGHWAY REQUIREMENTS IN ACCORDANCE WITH PERMITS.
  10. ENCASE FOUR FEET OF SEWER AT POINTS OF INTERFERENCE WITH POLES, CASE III, S-172.
  11. HOUSE LATERALS TO BE CONSTRUCTED WITH INVERTS AT PROPERTY LINE 8 FEET BELOW CURB GRADE, EXCEPT AS NOTED.
  12. ALL STRUCTURES SHALL BE BRICK SEWER STRUCTURES S-B-104. PRECAST CONCRETE MANHOLES PER S-4125 OR S-4175 MAY BE USED AS AN ALTERNATE IN LOCATIONS APPROVED BY THE COUNTY ENGINEER.
  13. FOR ALLOWABLE LEAKAGE TEST USE FORMULA NO. 1, SPECS. SEC. 54.
  14. MANHOLE TOPS IN UNIMPROVED RIGHTS-OF-WAY TO BE SIX INCHES ABOVE FINISHED GRADE.
  15. THE CONTRACTOR SHALL NOTIFY THE CONSTRUCTION DIVISION BY TELEPHONE, MADISON 9-4747 EXT. 8031, AT LEAST TWENTY-FOUR HOURS BEFORE STARTING ANY WORK UNDER THIS CONTRACT.
  16. IT SHALL BE THE RESPONSIBILITY OF THE CONTRACTOR TO LOCATE ALL UTILITIES OF EVERY NATURE WHETHER SHOWN HEREON OR NOT AND PROTECT THEM FROM DAMAGE. THE CONTRACTOR SHALL BEAR THE TOTAL EXPENSE OF REPAIR OR REPLACEMENT OF SAID UTILITIES DAMAGED BY OPERATIONS IN CONNECTION WITH THE PROSECUTION OF THIS WORK.
  17. STANDARD SPECIFICATIONS DATED OCT. 25, 1961, APPLY TO THE CONSTRUCTION OF THIS PROJECT.
  18. FIGURES IN CIRCLES AT ENDS OF HOUSE LATERALS INDICATE DEPTH BELOW CURB GRADE.

NO CHARGE FOR CONNECTIONS  
*James Walsh*  
4-13-62

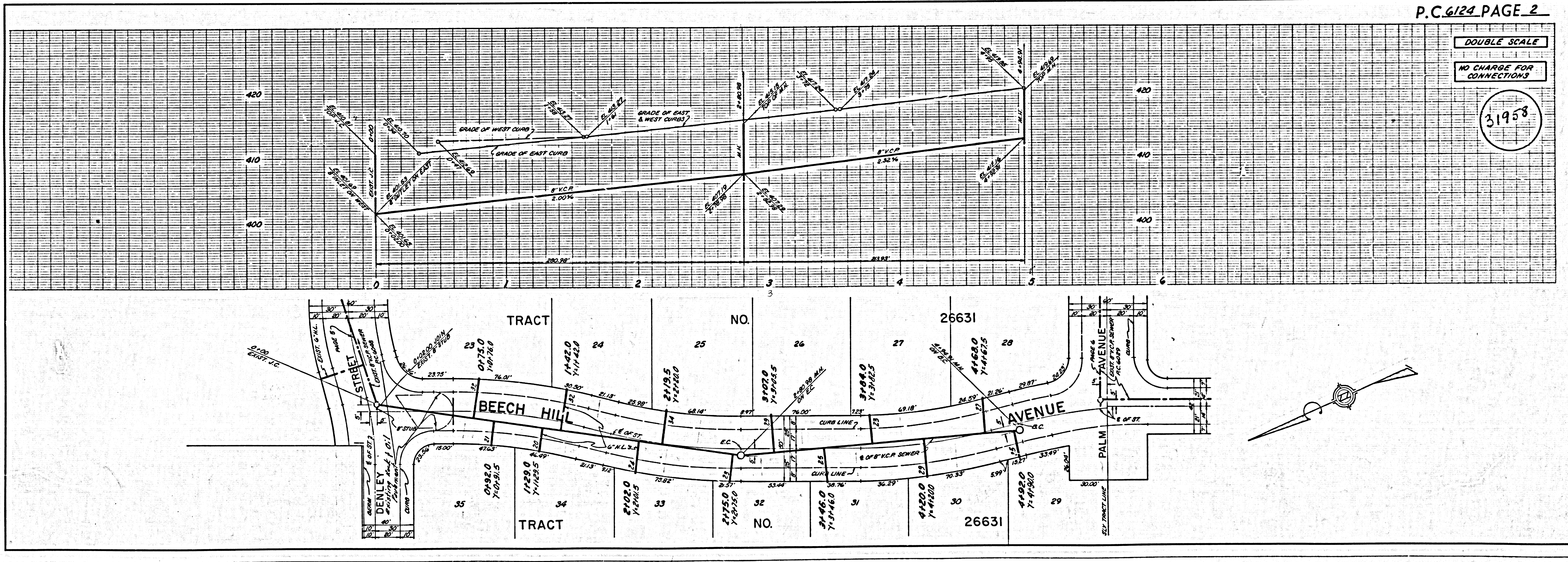
DOUBLE SCALE  
VERTICAL

NO CONNECTIONS FOR THE DISPOSAL OF INDUSTRIAL WASTES SHALL BE MADE TO SEWERS SHOWN ON THESE DRAWINGS WITHOUT WRITTEN PERMISSION FROM THE CHIEF ENGINEER AND GENERAL MANAGER OF THE COUNTY SANITATION DEPARTMENT.

APPROVED, JOHN A. LAMBIE, COUNTY ENGINEER  
APPROVED, J.B. PARKHURST, CHIEF ENGINEER  
By: *Richard S. Wilson* ASST. SANITATION ENGINEER  
By: *J. B. Parkhurst* OFFICE ENGINEER  
CHECKED BY: *W. D. Under* 4-16-62  
OFFICE OF COUNTY ENGINEER, REG. C. E. NO. 946

31957

31958



P.C. 6124 PAGE 2

DOUBLE SCALE

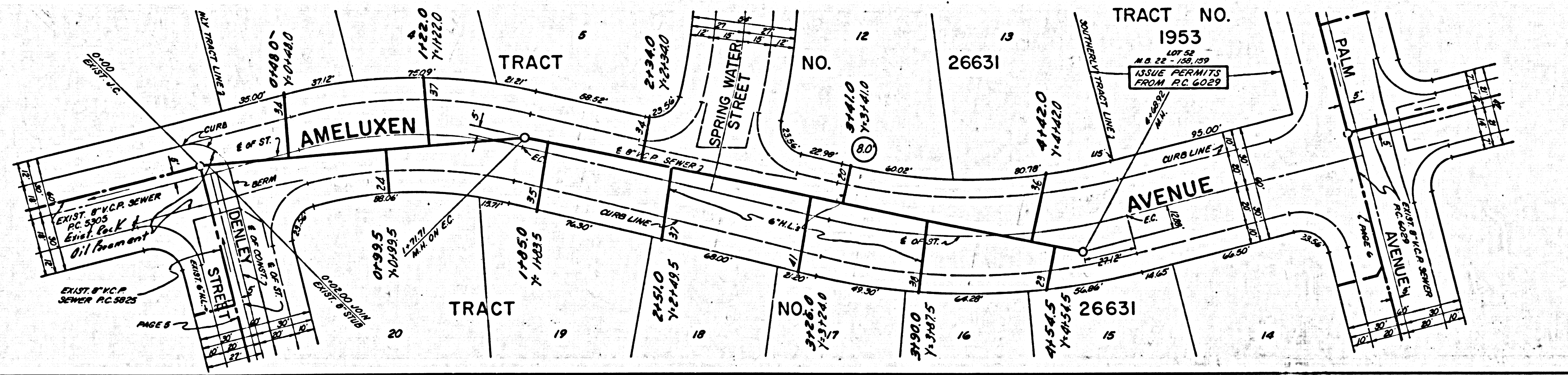
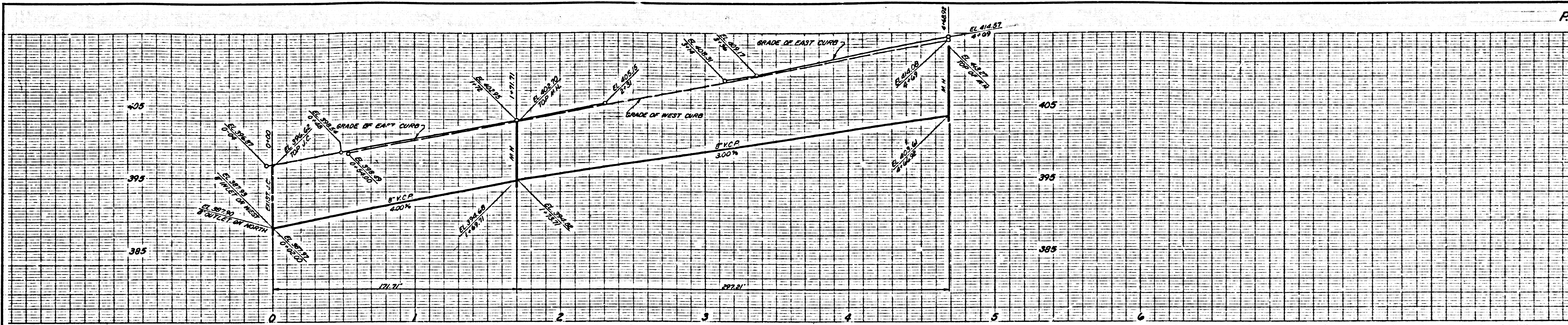
NO CHARGE FOR CONNECTIONS

31958

DOUBLE SCALE

NO CHARGE FOR CONNECTIONS

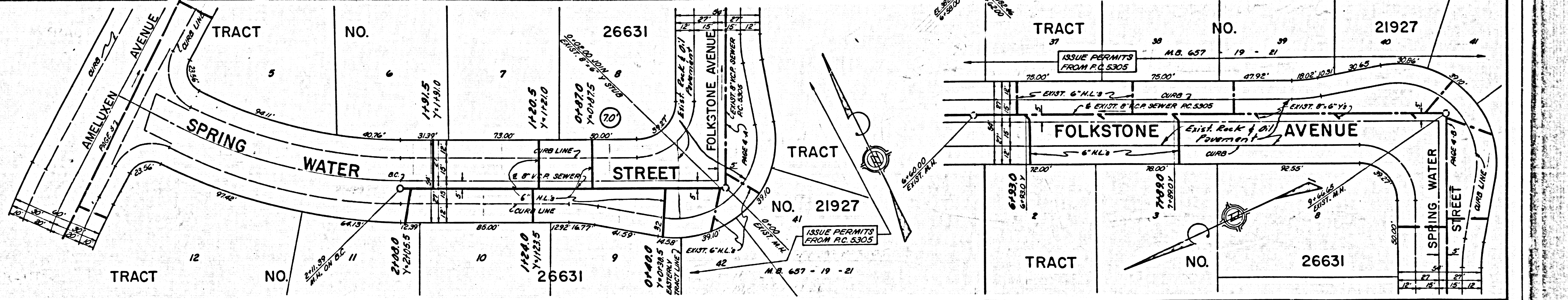
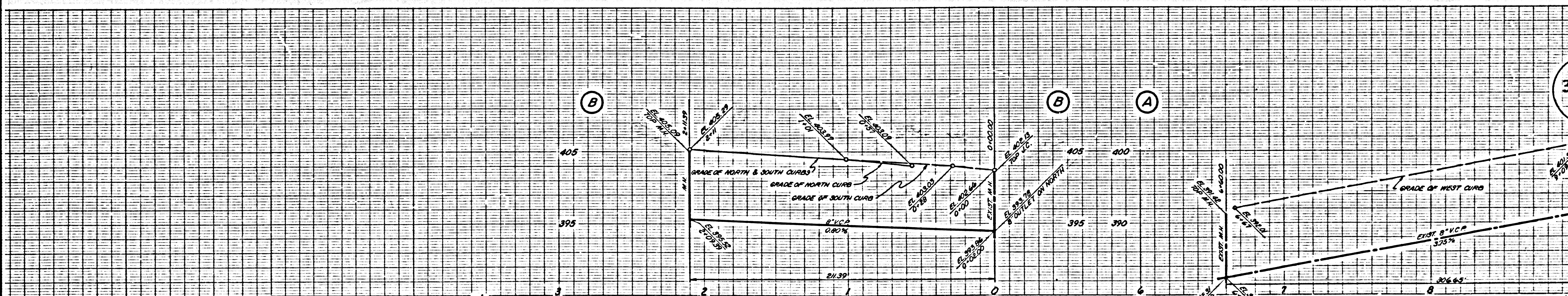
31959



DOUBLE SCALE

NO CHARGE FOR CONNECTIONS

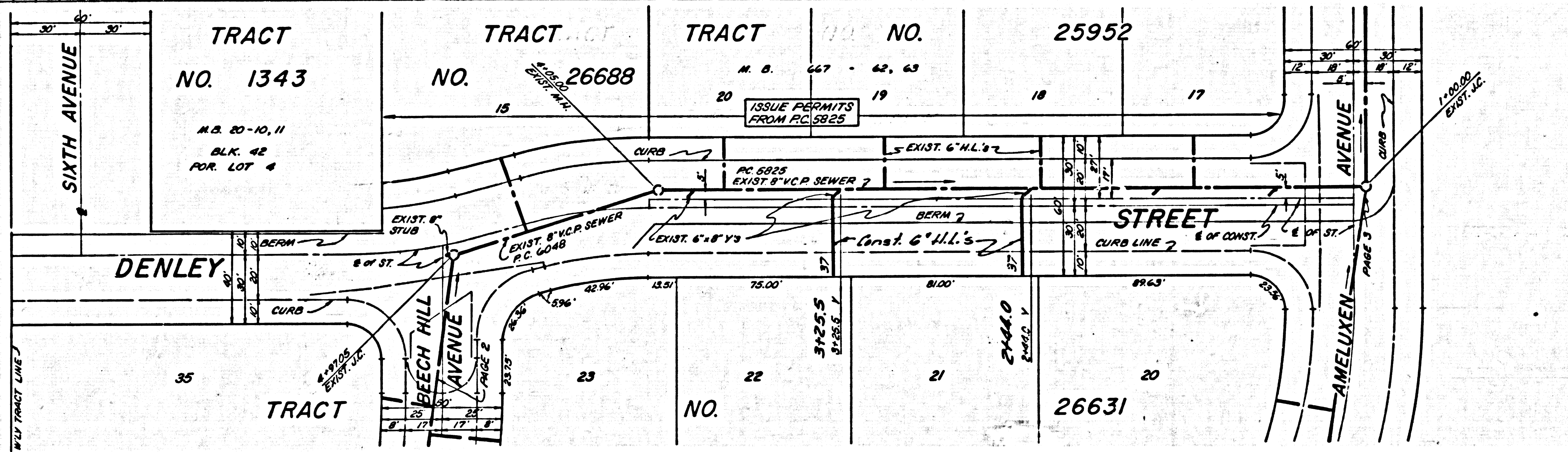
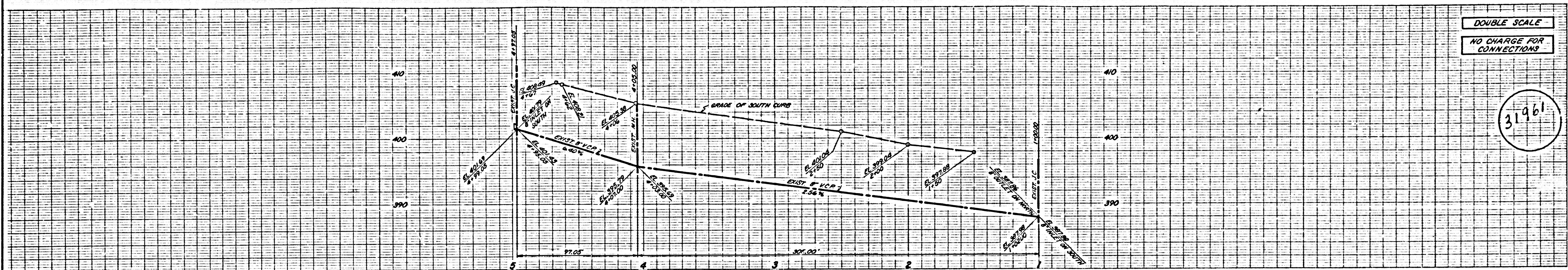
31960



DOUBLE SCALE

NO CHARGE FOR CONNECTIONS

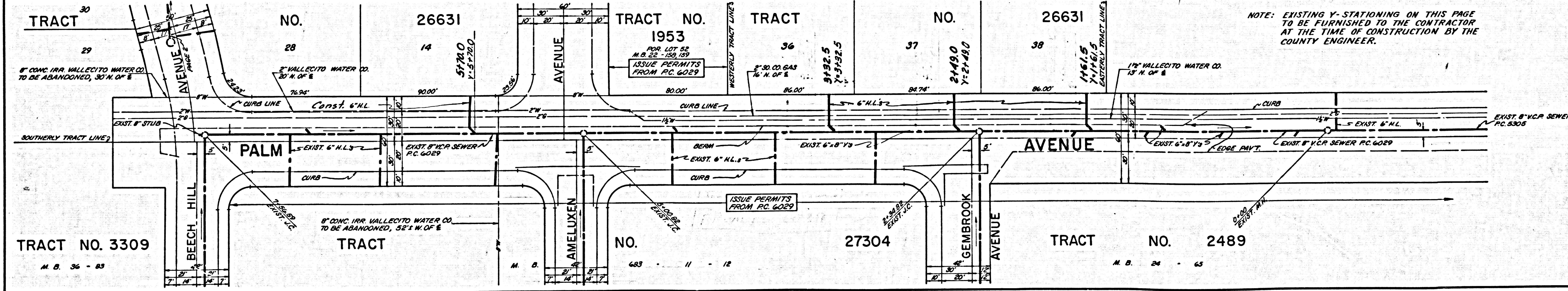
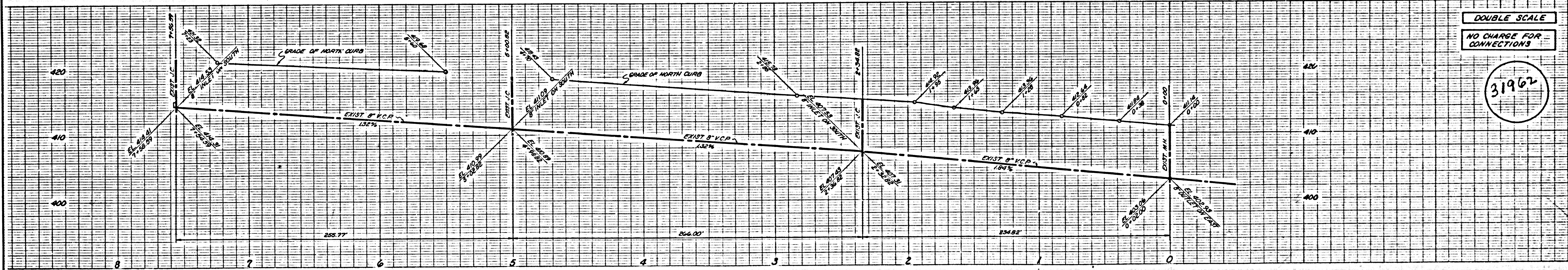
31961



DOUBLE SCALE

NO CHARGE FOR CONNECTIONS

31962



NOTE: EXISTING Y-STATIONING ON THIS PAGE TO BE FURNISHED TO THE CONTRACTOR AT THE TIME OF CONSTRUCTION BY THE COUNTY ENGINEER.