

PUEENTE BLDG. DIST. NO. 2

SANITARY SEWER R/W

PRIVATE CONTRACT NO. 6129

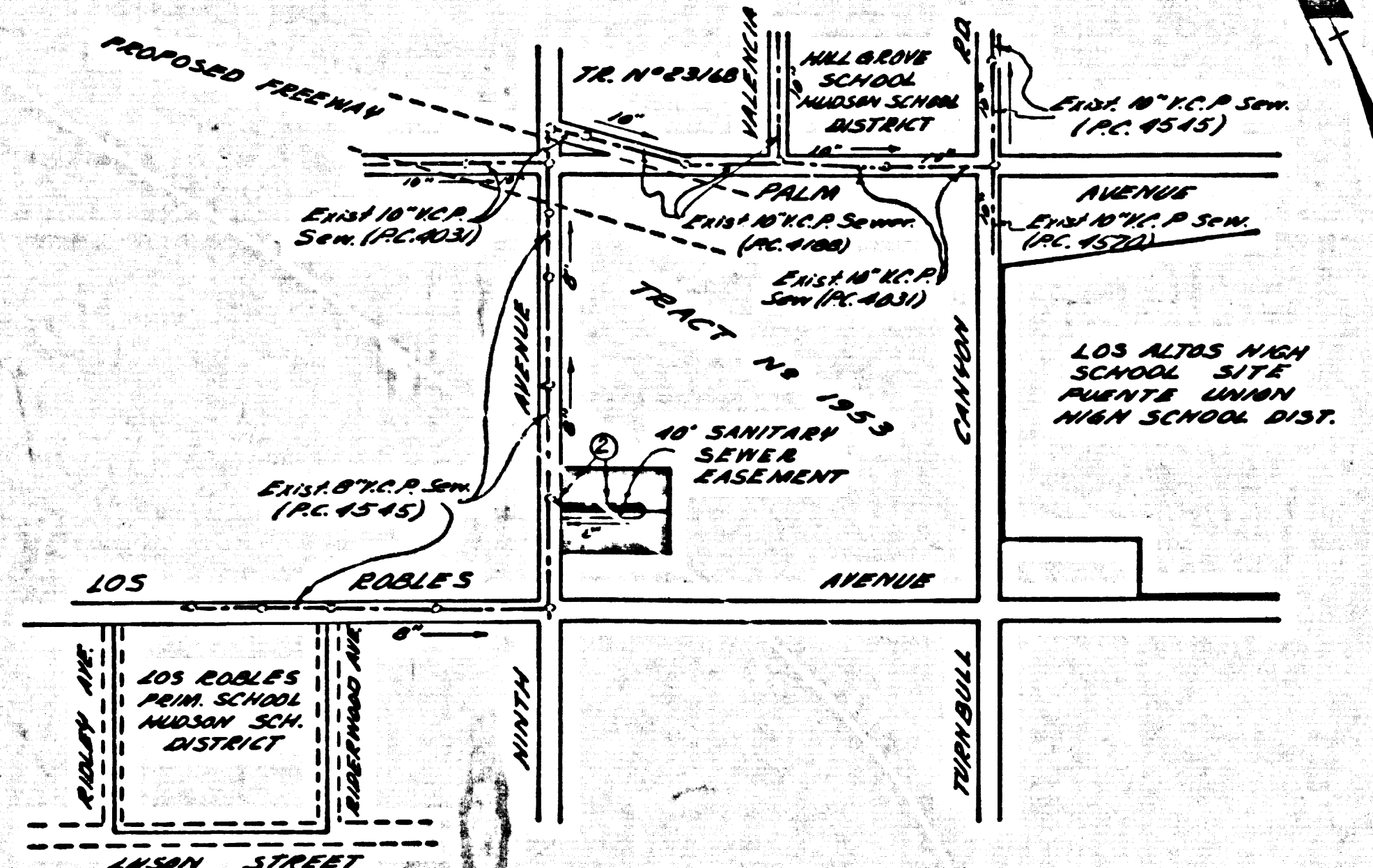
W.S. 37
 SHEETS: 2 PAGES
 SCALE: VERT. 1"=4' HORIZ. 1"=40'
 FEBRUARY, 1962
 PREPARED IN THE OFFICES OF
 DUTCH HOLZHAUER AND ASSOCIATES
 714 Hillman Avenue, Alhambra, California 91801
 REG. C. E. NO. 10012
 FOR LEGEND SEE PLAN NO. S-A-64

BENCH MARK:
 B.M. No. 406 R.B. 2123-27 Turnbull
 Corner E. & S. 3rd St. at
 1700 Ave. of Turnbull Canyon Rd. Bl.
 Sp. Top of S.D. Outlet.
 ELEV. 953.082

PRIVATE ENGINEER'S NOTICE TO CONTRACTOR
 The existence and location of any underground utility pipes or structures shown on these plans are indicated by a search of the available records. To the best of our knowledge there are no existing utilities or structures except as shown on these plans. The Contractor is required to take due precautionary measures to protect the utility lines or structures shown and any other lines and structures not of record or not shown on these plans.
 J. C. Hoffmann
 R.E. No. 10219

- NOTES:**
1. PROVIDE STAKES ON THE PROPERTY LINE OR PROPERTY LINES PRODUCED AT RIGHT ANGLES TO THE SEWER LINE AT THE CENTER LINE OF EACH MANHOLE.
 2. NO REPRESENTATIVE OF THE COUNTY ENGINEER WILL SURVEY OR LAY OUT ANY PORTION OF THE WORK.
 3. THE OWNER OR HIS AUTHORIZED REPRESENTATIVE SHALL FURNISH THE COUNTY ENGINEER WITH GRADE SHEETS AND STATIONING FOR ALL HOUSE LATERALS AND Y BRANCHES AND SHALL PROVIDE STAKES FOR THEM AT THEIR PROPER LOCATIONS WITH STATIONING PLAINLY MARKED. ANY CHANGE IN LOCATION SHALL BE REQUESTED IN WRITING BY THE OWNER OR HIS REPRESENTATIVE.
 4. THE PRIVATE ENGINEER SHALL FURNISH THE HOUSE LATERAL DEPTH AT THE PROPERTY LINE BELOW THE TOP OF CURB ELEVATION FOR EACH HOUSE LATERAL ON THE GRADE SHEET.
 5. NO REVISIONS SHALL BE MADE IN THESE PLANS WITHOUT THE APPROVAL OF THE COUNTY ENGINEER.
 6. USE STANDARD MANHOLE FRAMES AND COVERS, S-117, EXCEPT AS NOTED.
 7. USE EXTRA STRENGTH PIPE ALL PIPE STANDARD DEPTH
 8. USE "WEDGE-LOCK" OR "SPREAD-SEAL" FOR ALL V.C.P. JOINTS PER SPEC'S, SECS. 34 & 48.
 9. RESURFACE ALL TRENCH WITHIN PAVED AREA TO MEET L.A. COUNTY ROAD DEPT. OR CALIF. STATE HIGHWAY REQUIREMENTS IN ACCORDANCE WITH PERMITS.
 10. ENCASE FOUR FEET OF SEWER AT POINTS OF INTERFERENCE WITH POLES, CASE III, S-172.
 11. HOUSE LATERALS TO BE CONSTRUCTED WITH INVERTS AT R/W LINE 6 FEET BELOW GRADED SURFACE OVER SEWER EXCEPT AS NOTED.
 12. MANHOLES SHALL BE BRICK SEWER STRUCTURES PER S-10-104 EXCEPT AS NOTED.
 13. FOR ALLOWABLE LEAKAGE TEST USE FORMULA NO. 1, SPEC'S, SEC. 34.
 14. STANDARD SPECIFICATIONS DATED OCTOBER 1961 APPLY IN CONSTRUCTION OF THIS PROJECT.
 15. THE CONTRACTOR SHALL NOTIFY THE CONSTRUCTION DIVISION BY TELEPHONE, MADISON 9-4149, AT LEAST TWENTY-FOUR HOURS BEFORE STARTING ANY WORK UNDER THIS CONTRACT.
 16. STANDARD SPECIFICATIONS DATED OCTOBER 1961 APPLY IN CONSTRUCTION OF THIS PROJECT.

NOTE:
 GRADES TO WHICH THIS IMPROVEMENT IS TO BE CONSTRUCTED ARE SHOWN ON PLANS AND PROFILES. GRADE POINTS FOR TOP OF CURB, CENTER LINE OF STREETS, OR CENTER LINE OF ALLEYS ARE SHOWN BY CIRCLES ON PROFILES. AT ALL POINTS BETWEEN DESIGNATED POINTS THE GRADE SHALL BE ESTABLISHED SO AS TO CONFORM TO A STRAIGHT LINE DRAWN BETWEEN SAID DESIGNATED POINTS.
 ELEVATIONS ARE IN FEET ABOVE U.S.C. & G.S. SEA LEVEL DATUM OF 1929.
 THIS DRAWING AND THE DATA HEREON ARE HEREBY MADE A PART OF THE SPECIFICATIONS.
 WORK SHALL BE CONSTRUCTED ACCORDING TO SPECIFICATIONS ON FILE IN THE OFFICE OF THE COUNTY ENGINEER AND SHALL BE PROSECUTED ONLY IN THE PRESENCE OF THE COUNTY ENGINEER.
 BEFORE WORK CAN BE STARTED, THE CONTRACTOR MUST OBTAIN A PERMIT TO EXCAVATE IN COUNTY STREETS FROM THE L.A. COUNTY ROAD DEPT., DISTRICT OFFICE NO. 1, AND FROM A PERMIT TO EXCAVATE IN COUNTY ENGINEER ROOM 500, L.A. COUNTY ENGINEER, DISTRICT OFFICE NO. 1, SUFFICIENT TO COVER THE COST OF CONSTRUCTION INSPECTION AND RECORD PLANS.
 APPROVAL OF THIS PLAN BY THE COUNTY OF LOS ANGELES DOES NOT CONSTITUTE A REPRESENTATION AS TO THE ACCURACY OF THE LOCATION OF OR THE EXISTENCE OR NON-EXISTENCE OF ANY UNDERGROUND UTILITY PIPE, OR STRUCTURE WITHIN THE LIMITS OF THIS PROJECT. THIS NOTE APPLIES TO ALL PAGES.
 IF WORK IS TO BE DONE IN A STATE HIGHWAY, A PERMIT MUST BE OBTAINED FROM THE STATE OF CALIFORNIA, DIVISION OF HIGHWAYS, 120 SOUTH SPRING STREET.



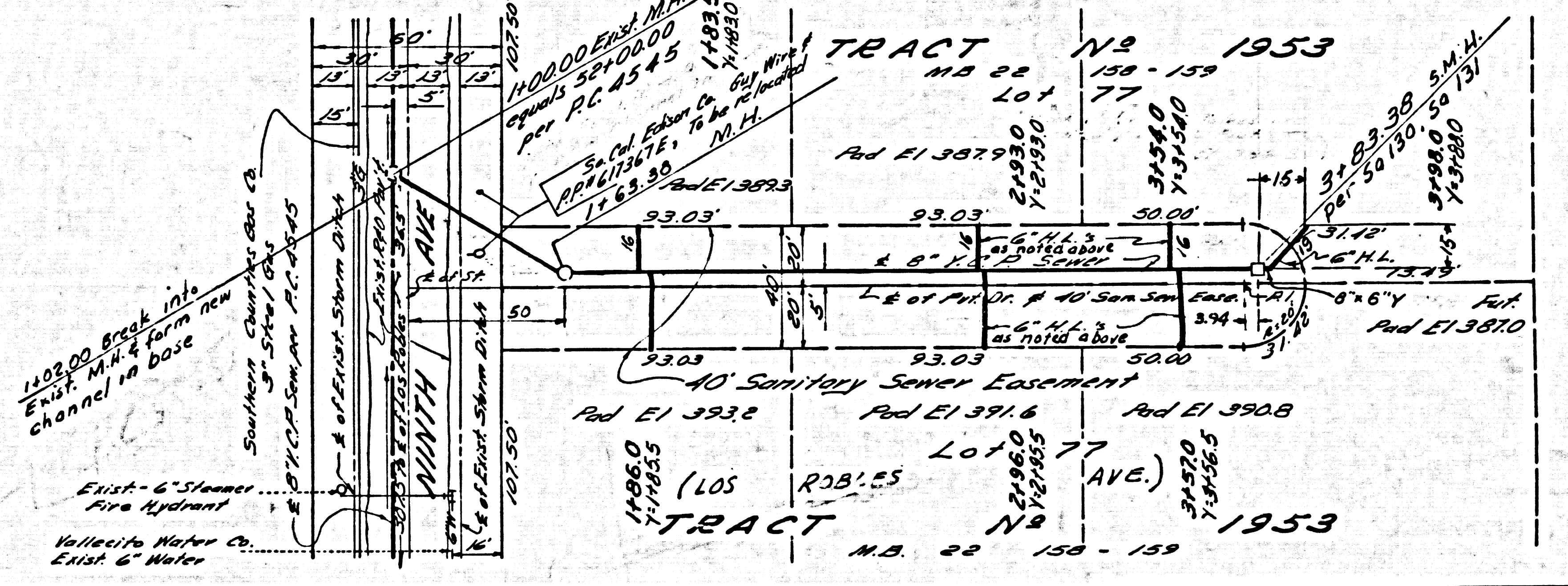
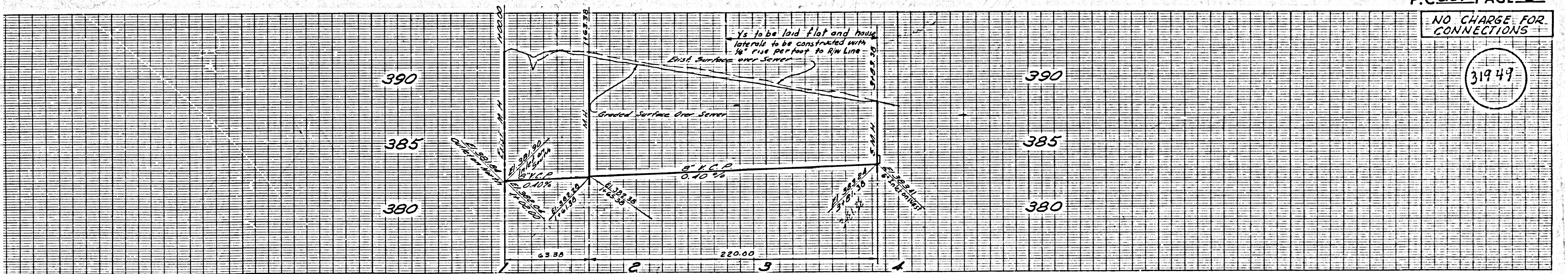
INDEX MAP
 SCALE 1"=600'
 P.C. 6129

NO CHARGE FOR CONNECTIONS
 J. C. Hoffmann

NO CONNECTIONS FOR THE DISPOSAL OF INDUSTRIAL WASTES SHALL BE MADE TO SEWERS SHOWN ON THESE DRAWINGS WITHOUT WRITTEN PERMISSION FROM THE CHIEF ENGINEER AND GENERAL MANAGER OF THE COUNTY SANITATION DISTRICTS.

COUNTY OF LOS ANGELES, CALIFORNIA
 APPROVED, JOHN A. LAMBIE, COUNTY ENGINEER
 APPROVED, J.R. PARANJESTICHIEF ENGINEER
 CO. SAN. DIST. NO. 12
 BY J. C. Hoffmann, ASST. SANITATION ENGINEER
 BY J. C. Hoffmann, OFFICE ENGINEER
 CHECKED BY J. C. Hoffmann, 5-11-62
 OFFICE OF COUNTY ENGINEER, 228, C. E. NO. 216
 Submitted: W. C. Pineda, 2-26-62
 San Dimas Regional Engineer

NO CHARGE FOR CONNECTIONS



BACK WATER FLOW VALVES SHALL BE REQUIRED FOR LOTS WITH GRADE ELEVATION BELOW 389.00 IN HOUSE CONNECTIONS