

36634

TRACT NO 25927

PRIVATE CONTRACT NO. 6131

W.S. 62

5 SHEETS; 9 PAGES

SCALE: VERT. 1" = 4' HORIZ. 1" = 40'

DECEMBER, 1963

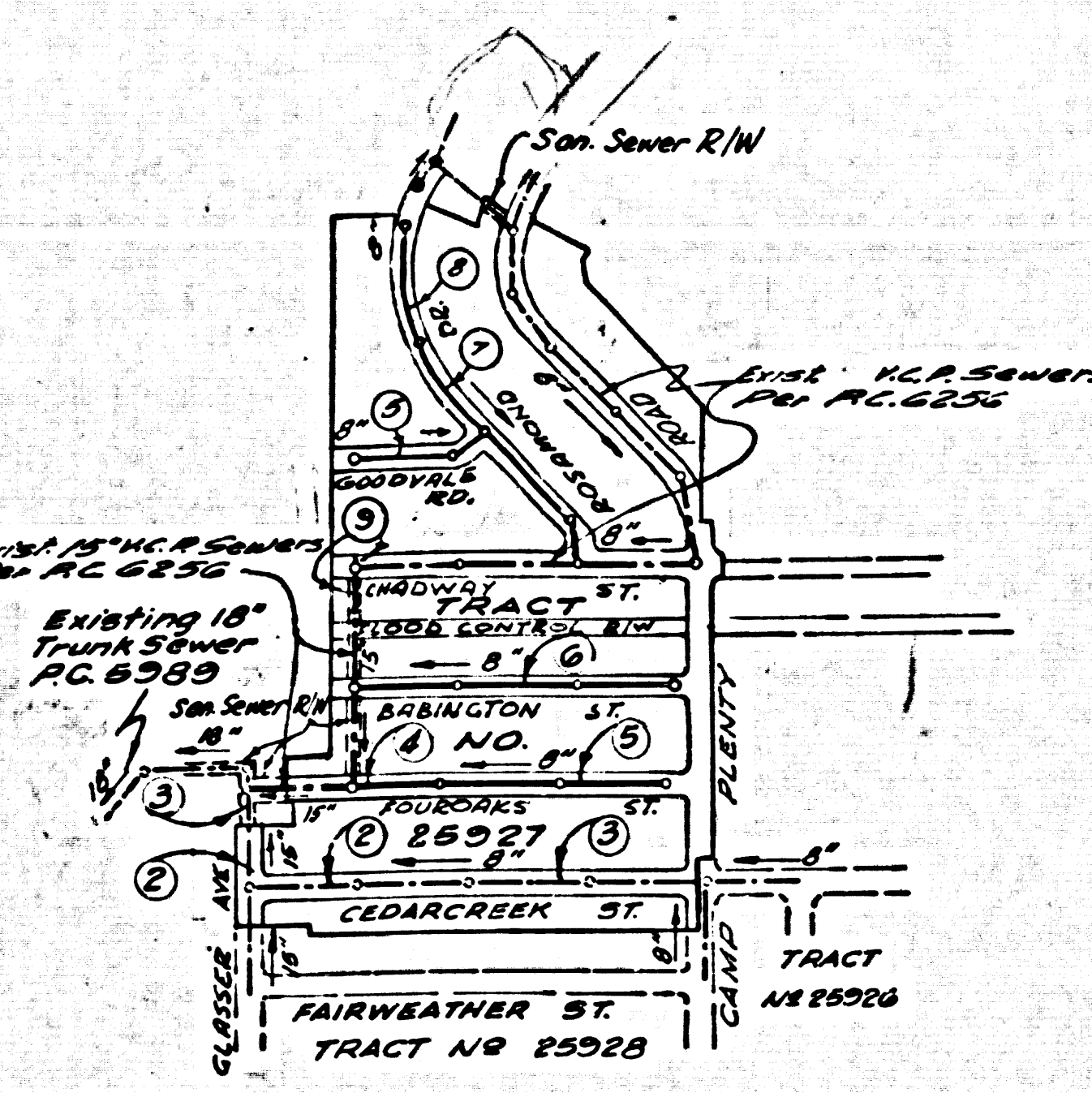
PREPARED IN THE OFFICES OF

MEINTIRE & QUIROS INC.

REG. C. E. NO. 8583
FOR LEGEND SEE PLAN NO. S-A-64

Std. U.S.C. & G.S. Brass Disc Set in a concrete Mon. & Stamped
0-487, 1953 located 20.3 in. N.W. of Top of Camp Pliny Rd. at S. of Camp Pliny Rd. of
the Int. of Camp Pliny Rd. and a paved Road Leading to the G.S. Ranch Airport
at N.E. corner of Intersection, and next to a White Witness Post.
Road Dept. Elevation = 1344.482

NO CHARGE FOR CONNECTIONS
Murray Deleh 12/13/63



INDEX MAP
TRACT NO 25927
P.C. 6131
Scale: 1" = 600'

Note: All in circle indicates Page Number.

- NOTES:
1. PROVIDE STAKES ON THE PROPERTY LINE OR PROPERTY LINES PRODUCED AT RIGHT ANGLES TO THE SEWER LINE AT THE CENTER LINE OF EACH MANHOLE.
2. NO REPRESENTATIVE OF THE COUNTY ENGINEER WILL SURVEY OR LAY OUT ANY PORTION OF THE WORK.
3. THE PRIVATE ENGINEER SHALL FURNISH THE COUNTY ENGINEER WITH GRADE SHEETS AND STATIONING FOR ALL HOUSE LATERALS AND Y BRANCHES AND SHALL PROVIDE STAKES FOR THEM AT THEIR PROPER LOCATIONS WITH STATIONING CLEARLY MARKED. ANY CHANGE IN ALIGNMENT SHALL BE REQUESTED IN WRITING BY THE PRIVATE ENGINEER. ALL HOUSE LATERALS SHALL BE CONSTRUCTED IN A STRAIGHT ALIGNMENT AT RIGHT ANGLES FROM THE MAIN LINE EXCEPT AS SHOWN ON THE PLANS.
4. THE PRIVATE ENGINEER SHALL FURNISH THE HOUSE LATERAL DEPTH AT THE PROPERTY LINE BELOW THE TOP OF CURB ELEVATION FOR EACH HOUSE LATERAL ON THE GRADE SHEET.
5. NO REVISIONS SHALL BE MADE IN THESE PLANS WITHOUT THE APPROVAL OF THE COUNTY ENGINEER.
6. USE STANDARD MANHOLE FRAMES AND COVERS, S-117, EXCEPT AS NOTED.
7. USE EXTENDED STRENGTH PIPE. ALL PIPE IS STANDARD DEPTH EXCEPT AS NOTED.
8. USE MECHANICAL COMPRESSION JOINTS FOR ALL V.C.P. JOINTS PER SPEC'S, SECS. 86 & 87.
9. RESURFACE ALL TRENCHES WITHIN PAVED AREAS TO MEET L.A. COUNTY ROAD DEPT. OR CALIF. STATE HIGHWAY REQUIREMENTS IN ACCORDANCE WITH PERMITS.
10. ALL STATE & LOCAL TRENCH SAFETY ORDERS WILL BE RIGIDLY ENFORCED.
11. HOUSE LATERALS TO BE CONSTRUCTED WITH INVERTS AT PROPERTY LINE 6 FEET BELOW CURB GRADE EXCEPT AS NOTED.
12. IF A POWER POLE IS WITHIN THREE FEET OF THE SEWER, THE SEWER SHALL BE ENCASED, PER S-0-172, CASE III, TWO FEET ON EITHER SIDE FROM THE POINT OF INTERFERENCE.
13. FOR ALLOWABLE LEAKAGE TEST USE FORMULA NO. 2, SPEC. SEC. 84.
14. MANHOLE TOPS IN UNIMPROVED RIGHTS-OF-WAY TO BE SIX INCHES ABOVE FINISHED GRADE.
15. THE CONTRACTOR SHALL NOTIFY THE CONSTRUCTION DIVISION BY TELEPHONE, MADISON 5-4711, EXT. 3811 AT LEAST TWENTY-FOUR HOURS BEFORE STARTING ANY WORK UNDER THIS CONTRACT.
16. THE CONTRACTOR SHALL SATISFY HIMSELF OF ALL SUBSTRUCTURES AND SHALL BE RESPONSIBLE FOR THEIR LOCATION AND MAINTENANCE.
17. ALL MANHOLES SHALL BE BRICK SEWER STRUCTURES, S-0-108, PRECAST NON-REINFORCED SEWER STRUCTURE, S-0-188, OR PRECAST REINFORCED SEWER STRUCTURE, S-0-178, MAY BE USED AS AN ALTERNATE IN LOCATIONS APPROVED BY THE COUNTY ENGINEER.
18. TOPS OF EXISTING MANHOLES SHALL BE ADJUSTED TO FINISHED GRADE.
19. IF DURING THE COURSE OF CONSTRUCTION IT IS DETERMINED THAT THERE IS LESS THAN FOUR FEET OF COVER OVER THE TOP OF A MAIN LINE OR HOUSE LATERAL V.C.P. SEWER WHICH IS NOT INDICATED ON THE PLANS, THE PIPE SHALL BE ENCASED PER S-0-172, CASE III, UNLESS OTHERWISE APPROVED BY THE COUNTY ENGINEER.

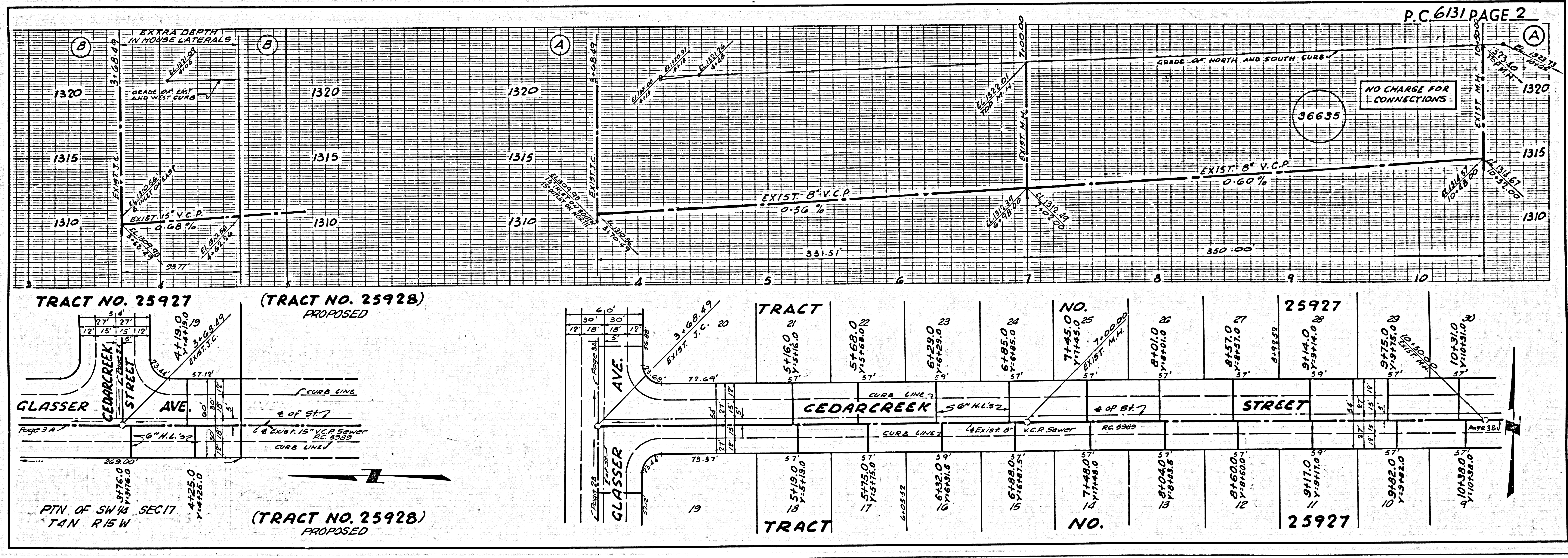
NO CONNECTIONS FOR THE DISPOSAL OF INDUSTRIAL WASTES SHALL BE MADE TO SEWERS SHOWN ON THESE DRAWINGS WITHOUT WRITTEN PERMISSION FROM THE CHIEF ENGINEER AND GENERAL MANAGER OF THE COUNTY SANITATION DISTRICTS.

LOTS 55, 56, 58, 108 to 122 incl., 125 to 133 incl., & 173 to 205 incl. ARE SERVED BY HOUSE LATERALS CONSTRUCTED UNDER P.C. 6256.

NOTE:
GRADES TO WHICH THIS IMPROVEMENT IS TO BE CONSTRUCTED ARE SHOWN ON PLANS AND PROFILES. GRADE POINTS FOR TOP OF CURBS, CENTER LINE OF STREETS OR CENTER LINE OF ALLEYS ARE SHOWN BY CIRCLES ON PROFILES AT ALL POINTS BETWEEN DESIGNATED POINTS THE GRADE SHALL BE ESTABLISHED SO AS TO CONFORM TO A STRAIGHT LINE DRAWN BETWEEN SAID DESIGNATED POINTS.
ELEVATIONS ARE IN FEET ABOVE U.S.C. & G.S. SEA LEVEL DATUM OF 1929.
THIS DRAWING AND THE DATA HEREON ARE HEREBY MADE A PART OF THE SPECIFICATIONS.
WORK SHALL BE CONSTRUCTED ACCORDING TO STANDARD SPECIFICATIONS DATED MAY 1962 ON FILE IN THE OFFICE OF THE COUNTY ENGINEER AND SHALL BE PROSECUTED ONLY IN THE PRESENCE OF COUNTY ENGINEER.
BEFORE WORK CAN BE STARTED THE CONTRACTOR MUST OBTAIN A PERMIT TO EXCAVATE IN COUNTY STREETS FROM THE L.A. COUNTY ROAD DEPT., DISTRICT OFFICE NO. 2, AND PAY A FEE TO THE COUNTY ENGINEER ROOM 810 AND \$100.00 PER FT. OF ANTELOPE VALLEY REGIONAL OFFICE SUFFICIENT TO COVER THE COST OF CONSTRUCTION INSPECTION AND RECORD PLANS.
APPROVAL OF THIS PLAN BY THE COUNTY OF LOS ANGELES DOES NOT CONSTITUTE A REPRESENTATION AS TO THE ACCURACY OF THE LOCATION OF OR THE EXISTENCE OR NON-EXISTENCE OF ANY UNDERGROUND UTILITY PIPE, OR STRUCTURE WITHIN THE LIMITS OF THIS PROJECT. THIS NOTE APPLIES TO ALL PAGES.
IF WORK IS TO BE DONE IN A STATE HIGHWAY, A PERMIT MUST BE OBTAINED FROM THE STATE OF CALIFORNIA, DIVISION OF HIGHWAYS, 108 SOUTH SPRING STREET, LOS ANGELES, CALIFORNIA.

COUNTY OF LOS ANGELES, CALIFORNIA
APPROVED JOHN A. LAMBIE, COUNTY ENGINEER
APPROVED J.D. PARKHURST CHIEF ENGINEER
CO. SAN. DIST. NO. 26
APPROVED BY: [Signature] ASSISTANT SANITATION ENGINEER
APPROVED BY: [Signature] OFFICE ENGINEER
SUBMITTED BY: [Signature] REGIONAL ENGINEER
CHECKED BY: [Signature] REG. C. E. NO. 9466

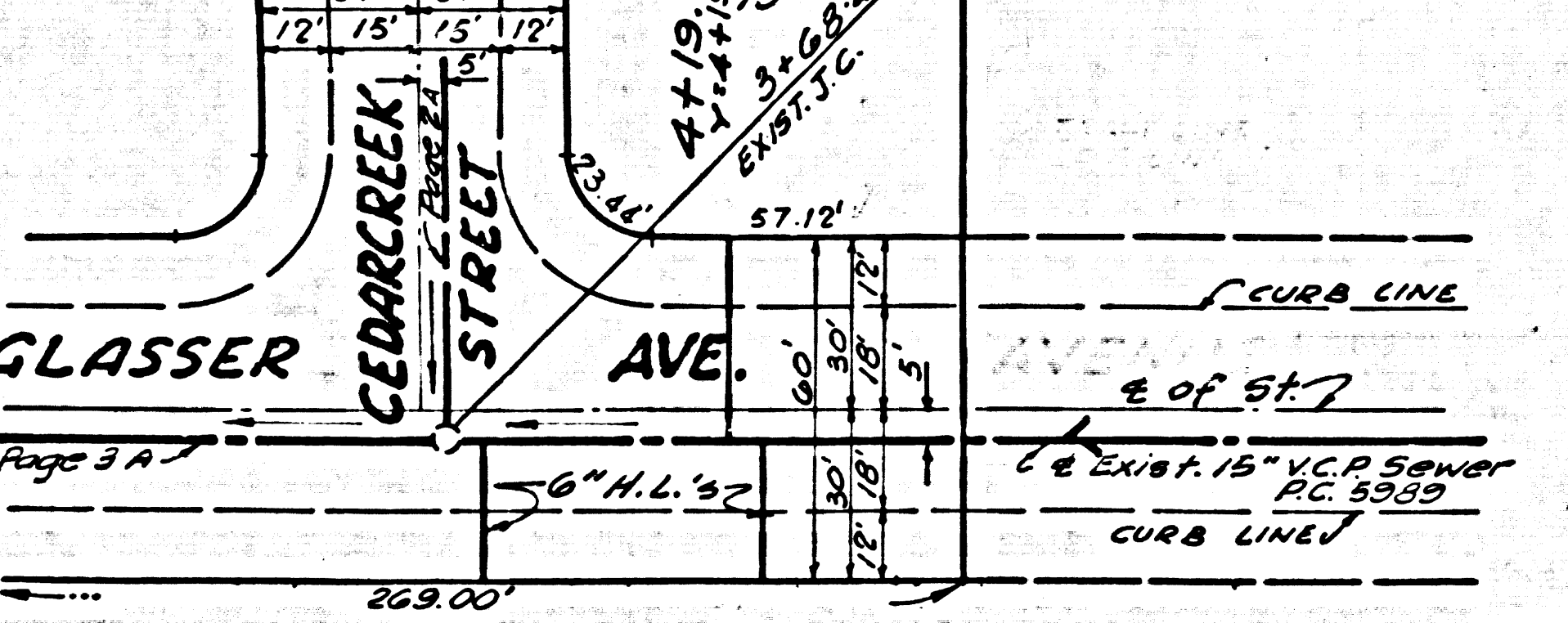
J.N. 0357.59



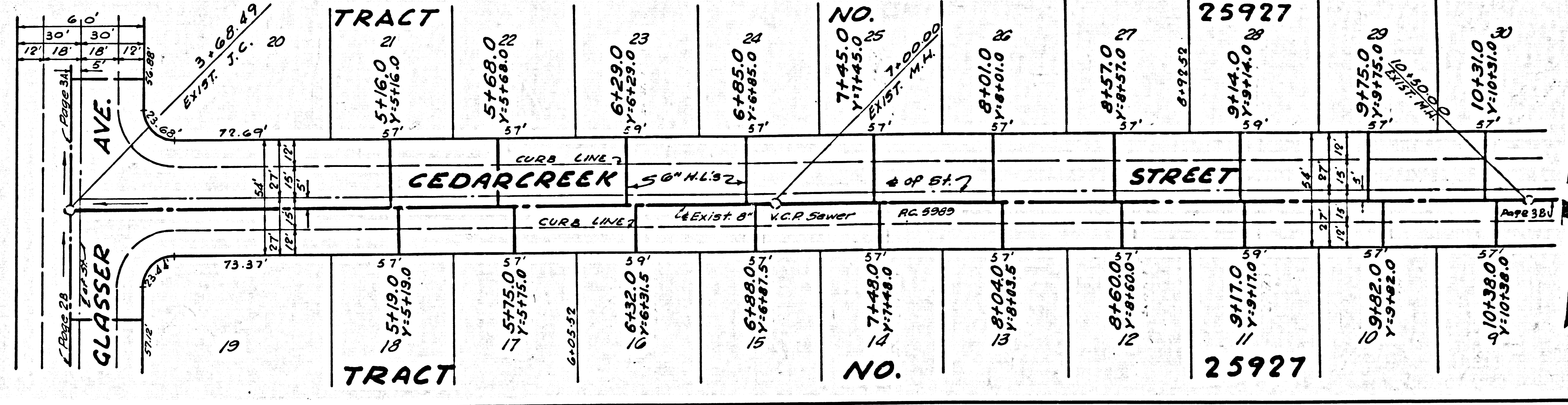
NO CHARGE FOR CONNECTIONS

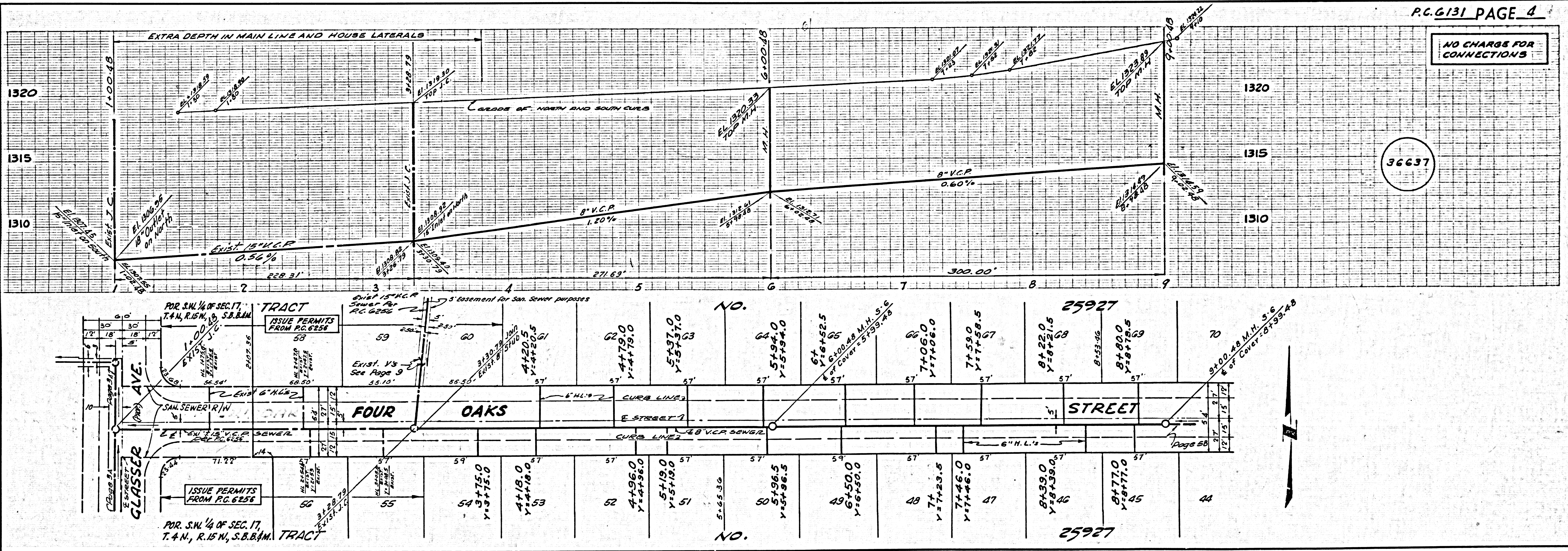
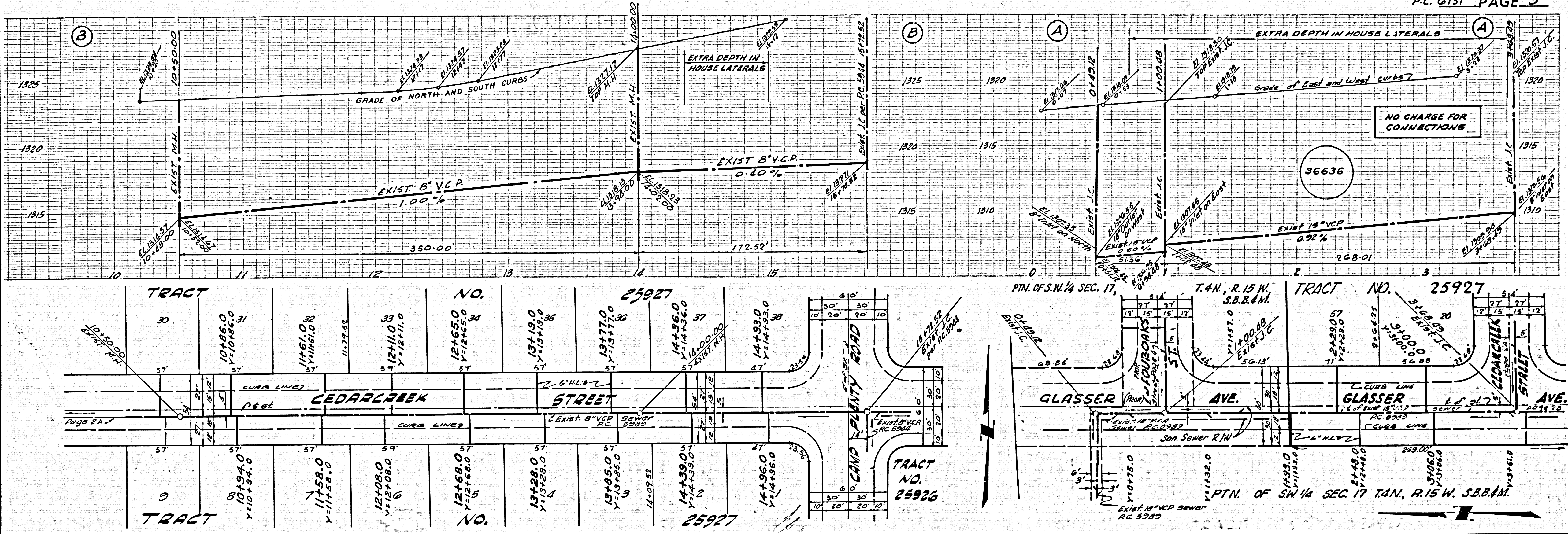
36635

TRACT NO. 25927 (TRACT NO. 25928) PROPOSED

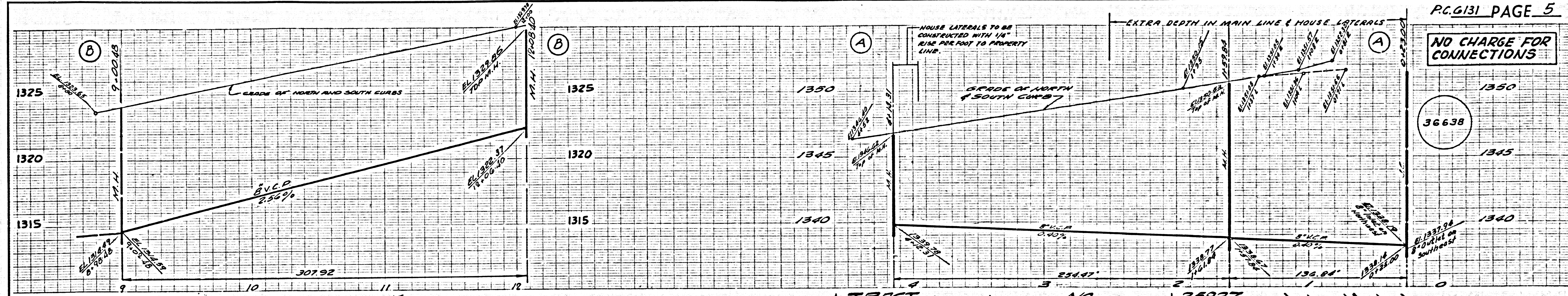


TRACT NO. 25927 (TRACT NO. 25928) PROPOSED



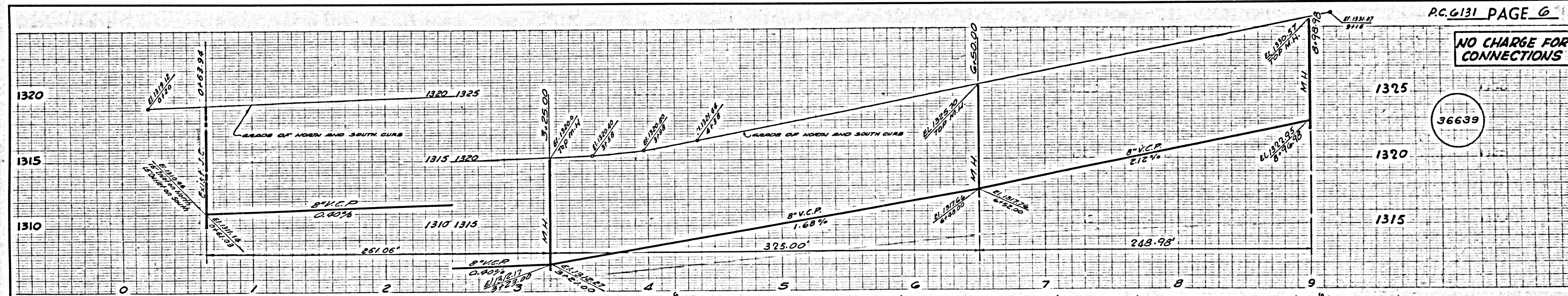
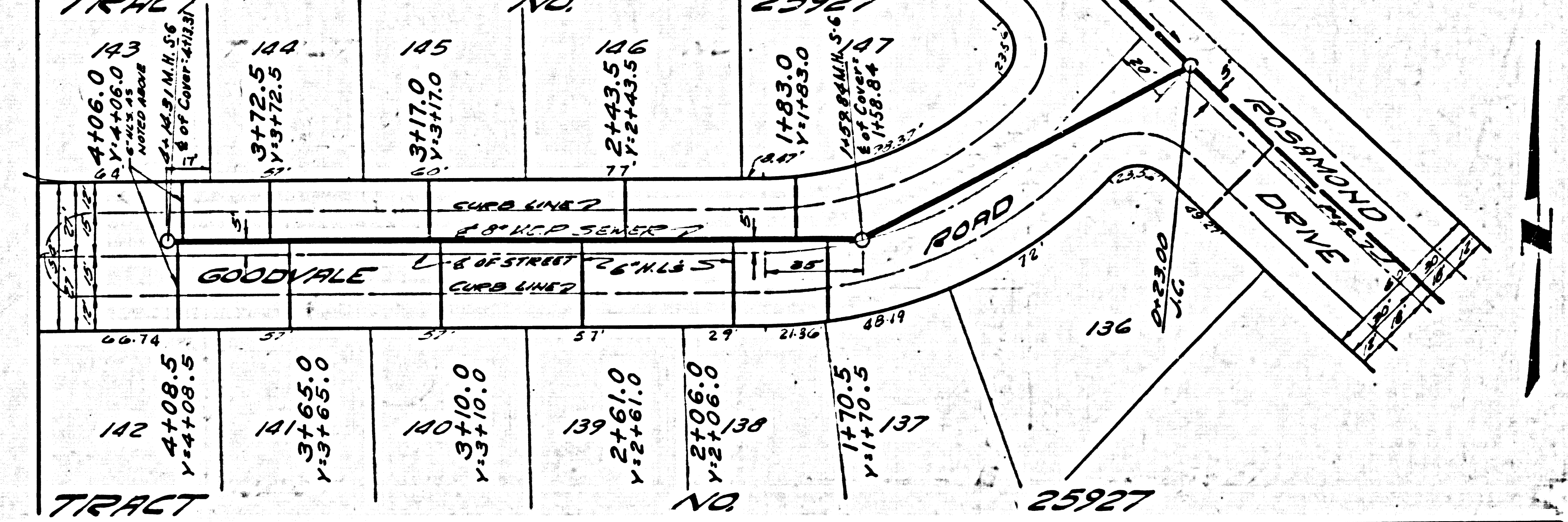
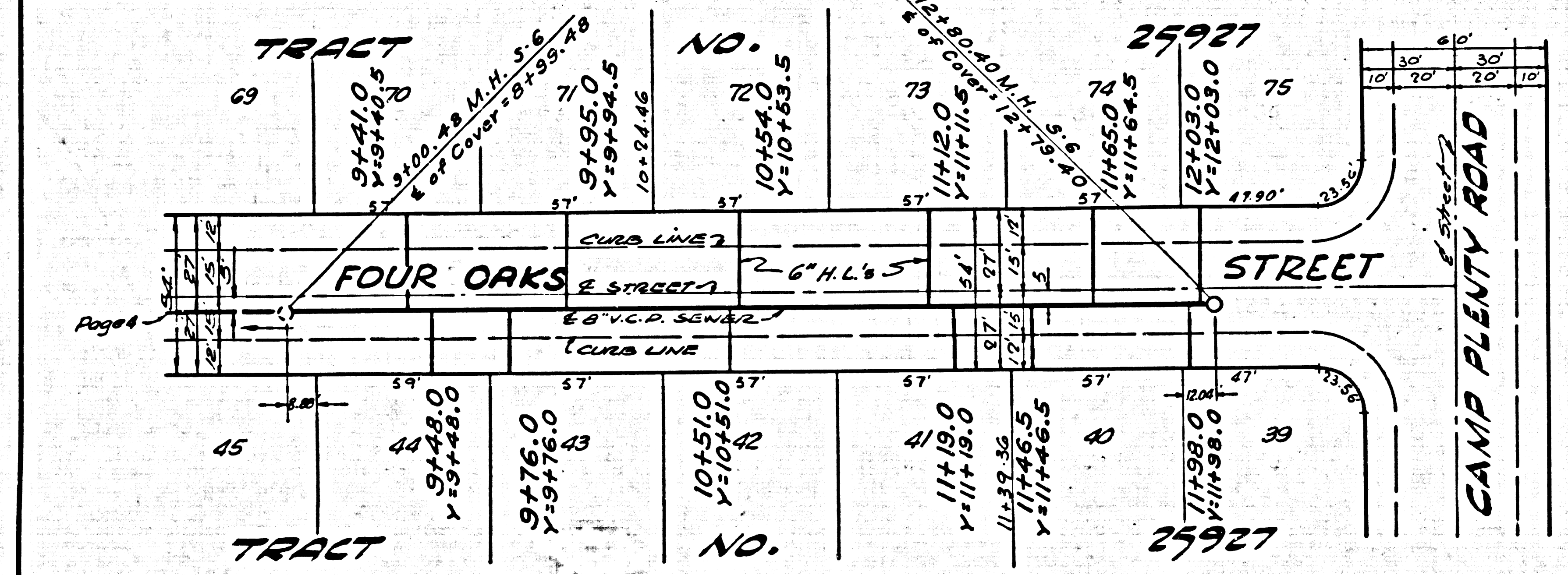


U.S.G. 196 L.A. COUNTY SEWER SHEET NO. 2 84. CAL. BLUEPRINT CO.



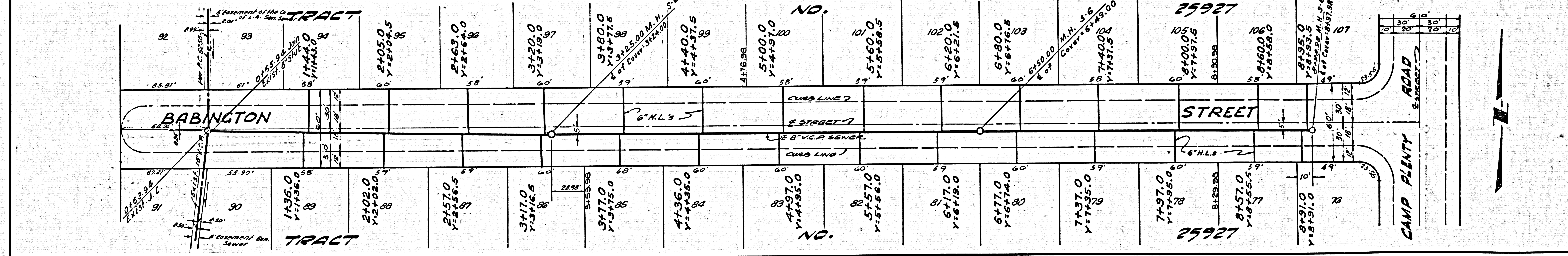
NO CHARGE FOR CONNECTIONS

36638



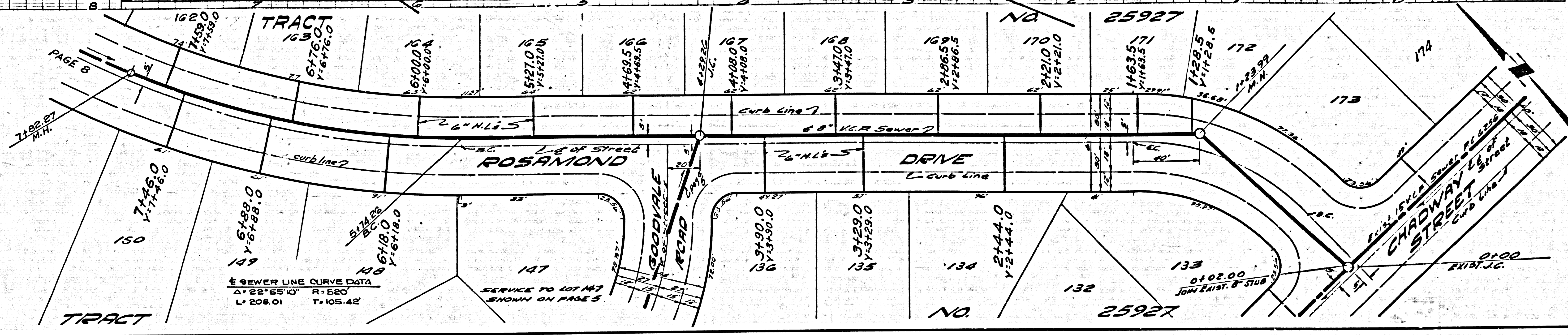
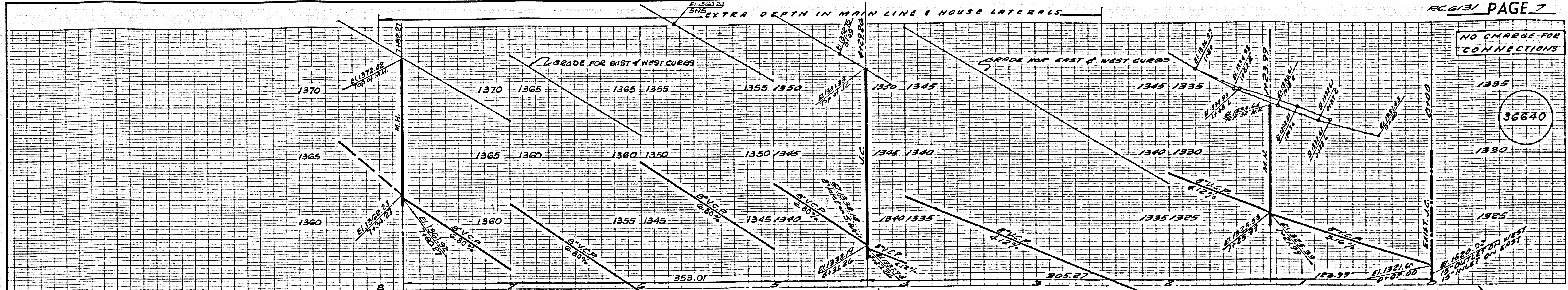
NO CHARGE FOR CONNECTIONS

36639



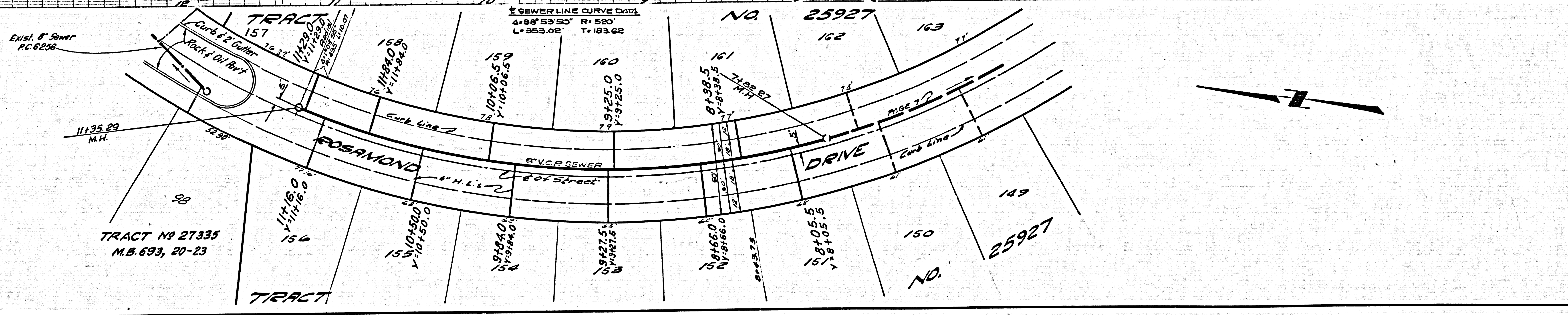
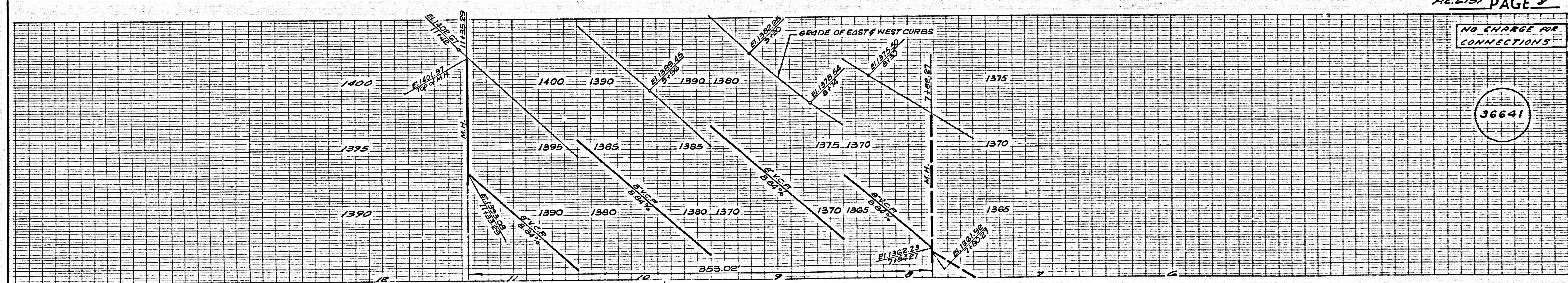
NO CHARGE FOR CONNECTIONS

36640



NO CHARGE FOR CONNECTIONS

36641



NO CHARGE FOR CONNECTIONS

36642

