

LANCASTER BLDG. DIST. NO. 8

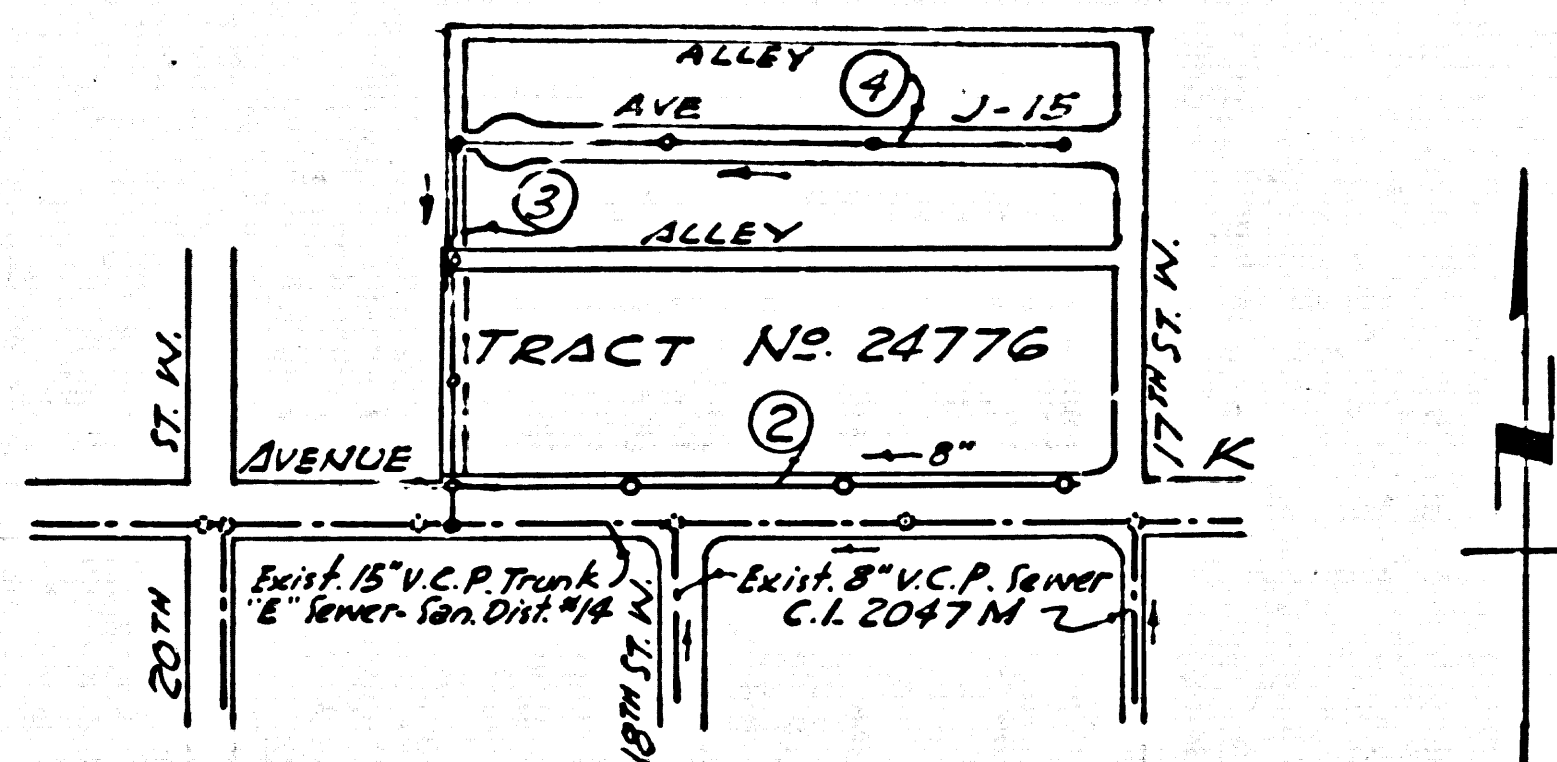
TRACT No 24776
PRIVATE CONTRACT NO. 6135

W.S. 71
 2 SHEETS; 4 PAGES (37551)
 SCALE: VERT. 1"=4' HORIZ. 1"=40'
 JULY, 1964
 PREPARED IN THE OFFICES OF
HARRY GILBERT ENGINEERING CO.
 BY *John Gilbert*
 REG. C. E. NO. 1297
 FOR LEGEND SEE PLAN NO. S-1

B.M. #759 S.L. 322 L&T. in 4' conc. walk
 to house No. 4354G 20th St. West.
 40'± E. & 170'± S. of 1/4 in. 20th St. W. & Ave. K.
 Elev. 2389.933

REVISIONS APRIL 1965
 1. Renumber existing lots. (Lots 1-9 incl. now Lots 23-31 incl.)
 2. Serve additional lots - (1-12422)
 3. Break into existing trunk sewer in Ave K at new station.
 Revision Approved *John W. Lambie*
 OFFICE OF COUNTY ENGINEER
 5-15-65
 * *J. P. Bartholomew*
 Revision Approved
 CO. SAN. DIST. NO. 14.

- NOTES:**
- PROVIDE STAKES ON THE PROPERTY LINE OR PROPERTY LINES PRODUCED AT RIGHT ANGLES TO THE SEWER LINE AT THE CENTER LINE OF EACH MANHOLE.
 - NO REPRESENTATIVE OF THE COUNTY ENGINEER WILL SURVEY OR LAY OUT ANY PORTION OF THE WORK.
 - THE PRIVATE ENGINEER SHALL FURNISH THE COUNTY ENGINEER WITH GRADE SHEETS AND STATIONING FOR ALL HOUSE LATERALS AND Y BRANCHES AND SHALL PROVIDE STAKES FOR THEM AT THEIR PROPER LOCATIONS WITH STATIONING PLAINLY MARKED. ANY CHANGE IN LOCATION SHALL BE REQUESTED IN WRITING BY THE PRIVATE ENGINEER. ALL HOUSE LATERALS SHALL BE CONSTRUCTED IN A STRAIGHT ALIGNMENT AT RIGHT ANGLES FROM THE MAIN LINE SEWER EXCEPT AS SHOWN ON THE PLANS.
 - THE PRIVATE ENGINEER SHALL FURNISH THE HOUSE LATERAL DEPTH AT THE PROPERTY LINE BELOW THE TOP OF CURB ELEVATION FOR EACH HOUSE LATERAL ON THE GRADE SHEET.
 - NO REVISIONS SHALL BE MADE IN THESE PLANS WITHOUT THE APPROVAL OF THE COUNTY ENGINEER.
 - USE STANDARD MANHOLE FRAMES AND COVERS, S-5 EXCEPT AS NOTED.
 - USE EXTRA STRENGTH PIPE ALL PIPE IS STANDARD DEPTH EXCEPT AS NOTED.
 - USE MECHANICAL COMPRESSION JOINTS FOR ALL V.C.P. JOINTS PER SPEC'S, SECT. 34, 90 & 99.
 - RESURFACE ALL TRENCH WITHIN PAVED AREA TO MEET L.A. COUNTY ROAD DEPT. OR CALIF. STATE HIGHWAY REQUIREMENTS IN ACCORDANCE WITH PERMITS.
 - ENCASE FOUR FEET OF SEWER AT POINTS OF INTERFERENCE WITH POLES, S-23.
 - HOUSE LATERALS TO BE CONSTRUCTED WITH 1/2" RISE PER FOOT TO PROPERTY LINE, EXCEPT AS NOTED.
 - ALL STRUCTURES SHALL BE BRICK SEWER STRUCTURES, S-8 EXCEPT AS NOTED.
 - FOR ALLOWABLE LEAKAGE TEST USE FORMULA NO. 2, SPEC'S, SEC. 54.
 - MANHOLE TOPS IN UNIMPROVED RIGHTS-OF-WAY TO BE SIX INCHES ABOVE FINISHED GRADE.
 - THE CONTRACTOR SHALL NOTIFY THE CONSTRUCTION & BOND-BRANCH DIVISION BY TELEPHONE, MADISON 9-4147, EXT. 825 AT LEAST TWENTY-FOUR HOURS BEFORE STARTING ANY WORK UNDER THIS CONTRACT.
 - STANDARD SPECIFICATIONS DATED MAY 25, 1962, APPLY IN THE CONSTRUCTION OF THIS PROJECT.
 - Manholes shall be brick sewer structures per S-3. Precast concrete manholes per S-5. If a P.C. may be used as an alternate in locations approved by the County Engineer, EXCEPT AS NOTED.
 - ALL STATE AND LOCAL TRENCH SAFETY ORDERS SHALL BE RIGIDLY ENFORCED.
 - IF DURING THE COURSE OF CONSTRUCTION IT IS DETERMINED THAT THERE IS LESS THAN FOUR FEET OF COVER OVER THE TOP OF MAIN LINE OR HOUSE LATERAL SEWER UNDER IS NOT INDICATED ON PLANS, THE PIPE SHALL BE ENCASED PER S-13 UNLESS OTHERWISE APPROVED BY CO. ENGINEER.
- NO CONNECTIONS FOR THE DISPOSAL OF INDUSTRIAL WASTES SHALL BE MADE TO SEWERS SHOWN ON THESE DRAWINGS WITHOUT WRITTEN PERMISSION FROM THE CHIEF ENGINEER AND GENERAL MANAGER OF THE COUNTY SANITATION DISTRICT.
- BEFORE BREAKING INTO ANY EXISTING STRUCTURE AND BEFORE FINAL ACCEPTANCE OF THIS WORK, COUNTY SANITATION DISTRICT (DU 4 1281) SHALL BE NOTIFIED IN ORDER THAT REQUIRED INSPECTION CAN BE MADE.



INDEX MAP
 P.C. 6135 TRACT No 24776
 SCALE: 1"=400'

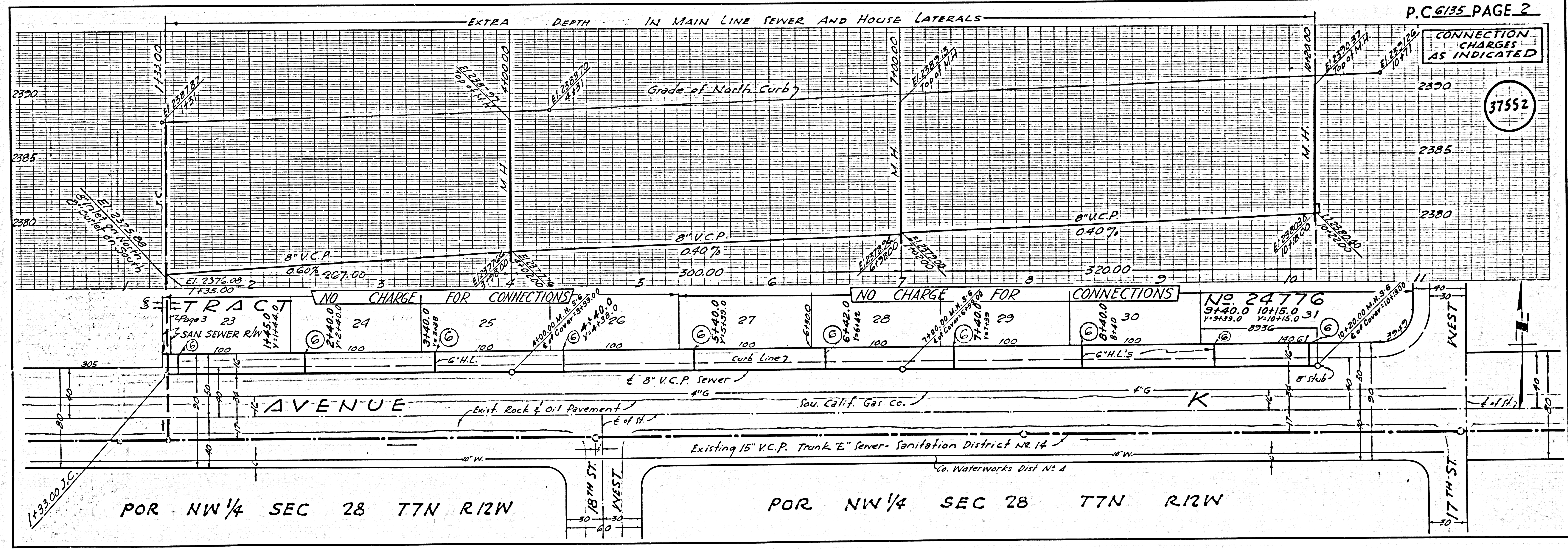
CONNECTION CHARGES AS INDICATED.
Return 7/1/64

NOTE:
 GRADES TO WHICH THIS IMPROVEMENT IS TO BE CONSTRUCTED ARE SHOWN ON PLANS AND PROFILES. GRADE POINTS FOR TOP OF CURBS, CENTER LINE OF STREETS, OR CENTER LINE OF ALLEYS ARE SHOWN BY CIRCLES ON PROFILES. AT ALL POINTS BETWEEN DESIGNATED POINTS THE GRADE SHALL BE ESTABLISHED SO AS TO CONFORM TO A STRAIGHT LINE DRAWN BETWEEN SAID DESIGNATED POINTS.
 ELEVATIONS ARE IN FEET ABOVE U.S.C. & G.S. SEA LEVEL DATUM OF 1929.
 THIS DRAWING AND THE DATA HEREON ARE HEREBY MADE A PART OF THE SPECIFICATIONS.
 WORK SHALL BE CONSTRUCTED ACCORDING TO SPECIFICATIONS ON FILE IN THE OFFICE OF THE COUNTY ENGINEER AND SHALL BE PROSECUTED ONLY IN THE PRESENCE OF THE COUNTY ENGINEER.
 BEFORE WORK CAN BE STARTED, THE CONTRACTOR MUST OBTAIN A PERMIT TO EXCAVATE IN COUNTY STREETS FROM THE L.A. COUNTY ROAD DEPT., DISTRICT OFFICE NO. 3, AND PAY A FEE TO THE COUNTY ENGINEER, ROOM 310, COUNTY ENGINEER BUILDING, 400 N. 1ST ST. SUFFICIENT TO COVER THE COST OF CONSTRUCTION INSPECTION AND RECORD PLANS.
 APPROVAL OF THIS PLAN BY THE COUNTY OF LOS ANGELES DOES NOT CONSTITUTE A REPRESENTATION AS TO THE ACCURACY OF THE LOCATION OR THE EXISTENCE OR NON-EXISTENCE OF ANY UNDERGROUND UTILITY PIPE, OR STRUCTURE WITHIN THE LIMITS OF THIS PROJECT. THIS NOTE APPLIES TO ALL PAGES.
 IF WORK IS TO BE DONE IN A STATE HIGHWAY, A PERMIT MUST BE OBTAINED FROM THE STATE OF CALIFORNIA, DIVISION OF HIGHWAYS, 126 SOUTH MAIN STREET.

COUNTY OF LOS ANGELES, CALIFORNIA
 APPROVED, JOHN A. LAMBIE, COUNTY ENGINEER APPROVED, J.R. PARKINSON, CHIEF ENGINEER
 CO. SAN. DIST. NO. 14
 BY *John A. Lambie* SANITATION ENGINEER BY *J.R. Parkinson* OFFICE ENGINEER
 CHECKED BY *J.W. Duda* 7-10-64
 OFFICE OF COUNTY ENGINEER, REG. C. E. NO. 9406

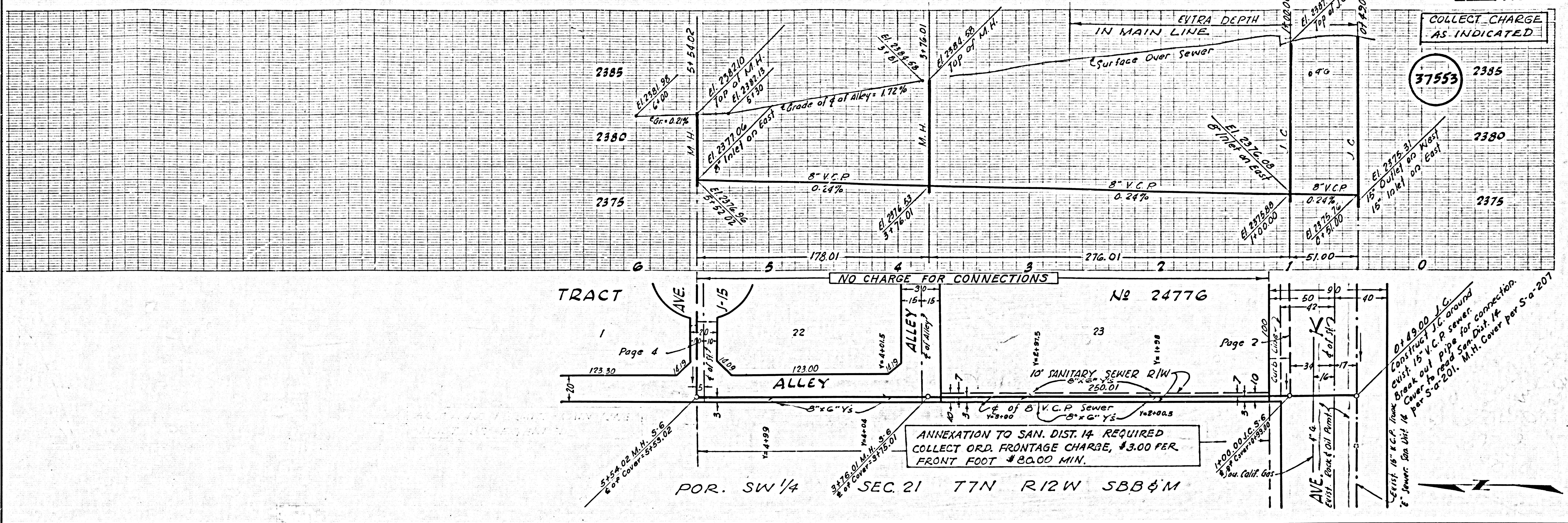
* APPROVAL BY CO. SAN. DIST. IS WITH UNDERSTANDING THAT NO RESIDENCE OR BUILDING WITH FLOOR LEVEL LESS THAN 2.0 FEET ABOVE ELEVATION OF RIM OF LOWEST MANHOLE WILL BE CONNECTED TO SEWERS.

SUBMITTED BY *John W. Lambie* 7-15-64
 ANTELOPE VALLEY REGIONAL ENGINEER



TRACT NO 24776 DIST NO 8

DIST NO 8



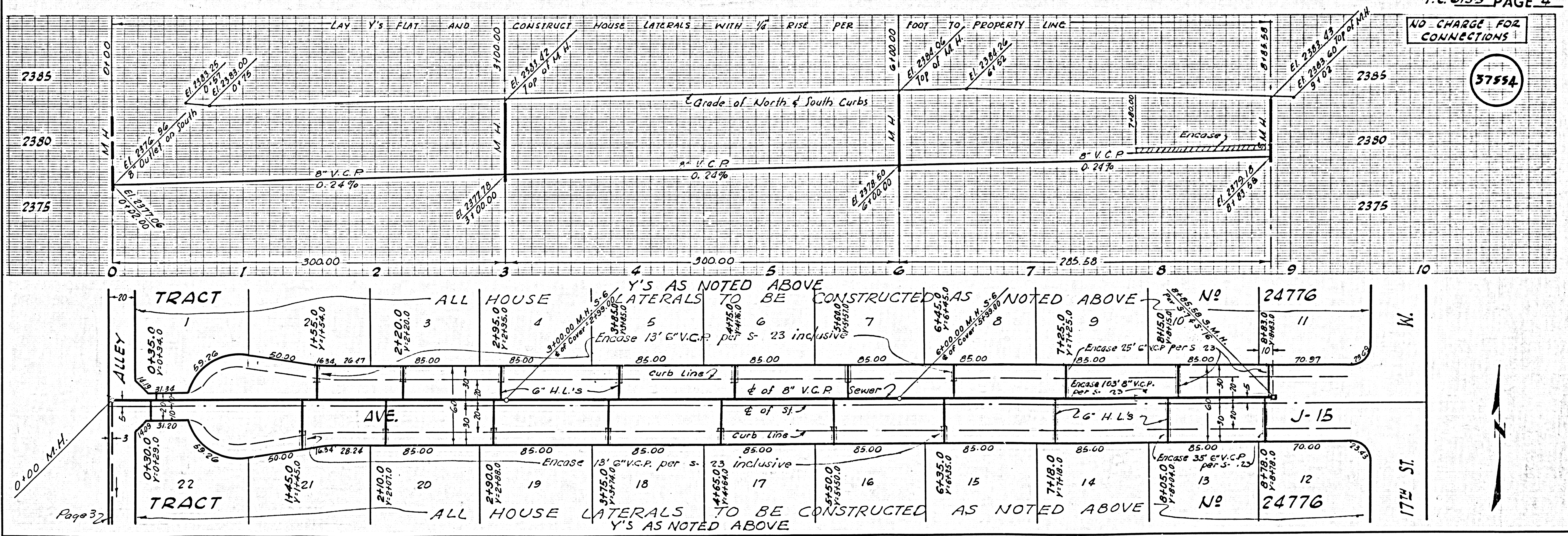
COLLECT CHARGE AS INDICATED

37553

NO CHARGE FOR CONNECTIONS

ANNEXATION TO SAN. DIST. 14 REQUIRED COLLECT ORD. FRONTAGE CHARGE, \$3.00 PER FRONT FOOT \$80.00 MIN.

Construct J.C. around exist. 15" V.C.P. sewer. Break out pipe for connection. Cover to road San. Dist. 14 per S-a-201. M.H. cover per S-a-201.



NO CHARGE FOR CONNECTIONS

37554

LAY Y'S FLAT AND CONSTRUCT HOUSE LATERALS WITH 1/8" RISE PER FOOT TO PROPERTY LINE

Y'S AS NOTED ABOVE ALL HOUSE LATERALS TO BE CONSTRUCTED AS NOTED ABOVE

Encase 13' 6" V.C.P. per S-23 inclusive

Encase 15' 6" V.C.P. per S-23

Encase 103' 8" V.C.P. per S-23