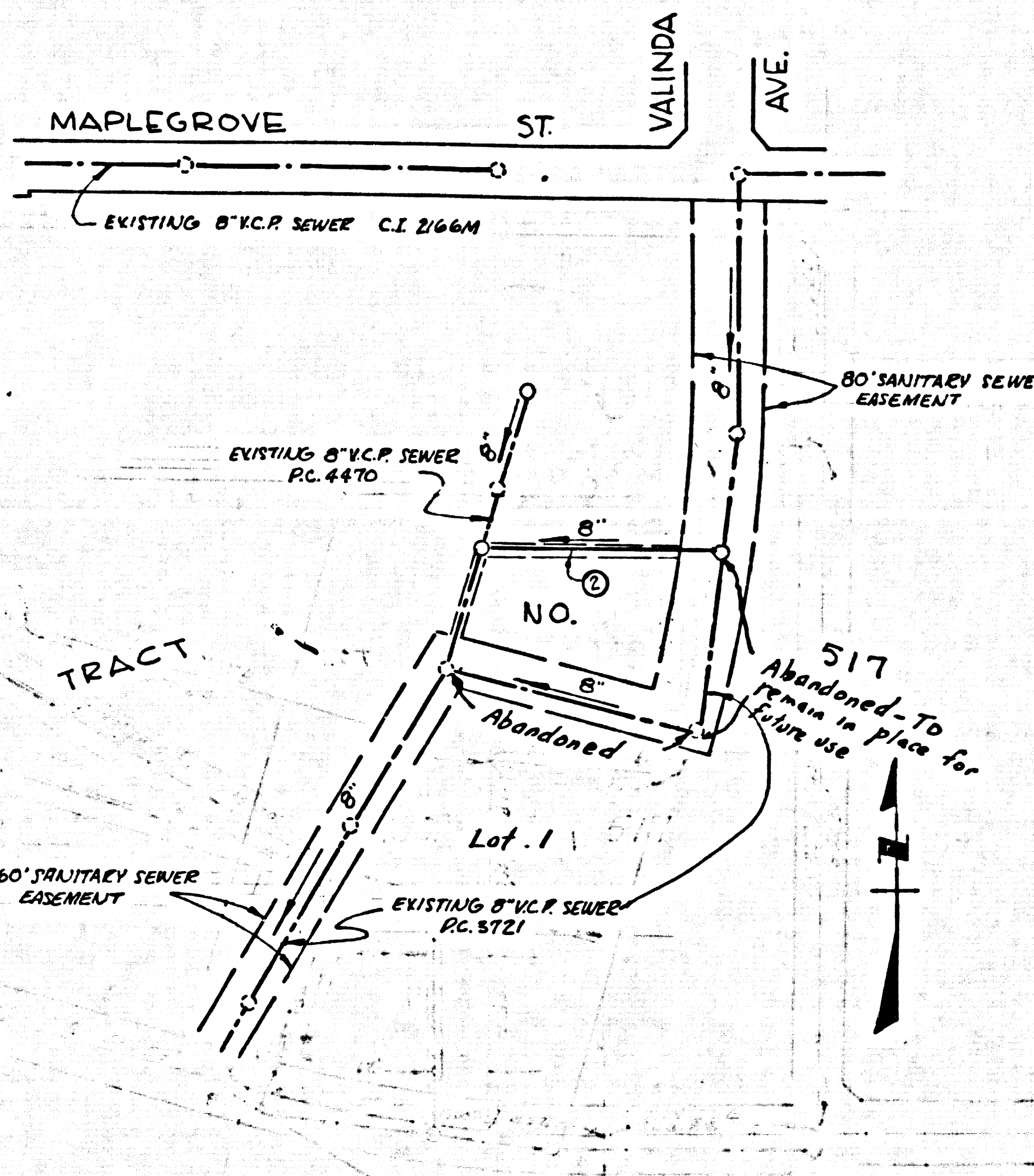


BM 110' 56.136 ELEV. 428.204 PUENTE QUAD 1955
 SET. L. 1/2" = 1' E. C. RET.
 S.E. COR. MAPLEGROVE ST. AUD PASS & COVINA RD.
 S. C.B. MAPLEGROVE ST.



INDEX MAP
 P.C. 6136
 SCALE 1" = 200'
 NUMBER IN CIRCLE INDICATE PAGE NUMBER.

NO CHARGE FOR CONNECTIONS
 Approved 5-25-67

PUENTE BLDG. DIST. NO. 2

- NOTES:
1. PROVIDE STAKES ON THE PROPERTY LINE OR PROPERTY LINES PRODUCED AT RIGHT ANGLES TO THE SEWER LINE AT THE CENTER LINE OF EACH MANHOLE.
 2. NO REPRESENTATIVE OF THE COUNTY ENGINEER WILL SURVEY OR LAY OUT ANY PORTION OF THE WORK.
 3. THE OWNER OR HIS AUTHORIZED REPRESENTATIVE SHALL FURNISH THE COUNTY ENGINEER WITH GRADE SHEETS AND STATIONING FOR ALL HOUSE LATERALS AND Y BRANCHES AND SHALL PROVIDE STAKES FOR THEM AT THEIR PROPER LOCATIONS WITH STATIONING PLAINLY MARKED. ANY CHANGE IN LOCATION SHALL BE REQUESTED IN WRITING BY THE OWNER OR HIS REPRESENTATIVE.
 4. THE PRIVATE ENGINEER SHALL FURNISH THE HOUSE LATERAL DEPTH AT THE PROPERTY LINE BELOW THE TOP OF CURB ELEVATION FOR EACH HOUSE LATERAL ON THE GRADE SHEET.
 5. NO REVISIONS SHALL BE MADE IN THESE PLANS WITHOUT THE APPROVAL OF THE COUNTY ENGINEER.
 6. USE STANDARD MANHOLE FRAMES AND COVERS, S-117, LISTED AT BOTTOM.
 7. USE BEST PRACTICE STRENGTH PIPE, ALL PIPE STANDARD DEPTH.
 8. USE MECHANICAL COMPRESSION JOINTS FOR ALL V.C.P. JOINTS PER SPEC'S, SECS. M.
 9. RESURFACE ALL TRENCH WITHIN PAVED AREA TO MEET L.A. COUNTY ROAD DEPT. OR CALIF. STATE HIGHWAY REQUIREMENTS IN ACCORDANCE WITH PERMITS.
 10. ENCASE FOUR FEET OF SEWER AT POINTS OF INTERFERENCE WITH POLES, CASE III, S-172.
 11. HOUSE LATERALS TO BE CONSTRUCTED WITH INVERTS AT PROPERTY LINE 6" BELOW CURB GRADE EXCEPT AS NOTED.
 12. ALL STRUCTURES SHALL BE BRICK SEWER STRUCTURES 2'-0" PRECAST CONCRETE MANHOLES PER S-135 EXCEPT AS NOTED OR BY USE OF RULES AND REGULATIONS APPROVED BY THE COUNTY ENGINEER.
 13. FOR ALLOWABLE LEAKAGE TEST USE FORMULA NO. 14 (C) SPEC'S, SEC. 54.
 14. MANHOLE TOPS IN UNIMPROVED RIGHTS-OF-WAY TO BE SIX INCHES ABOVE FINISHED GRADE.
 15. THE CONTRACTOR SHALL NOTIFY THE CONSTRUCTION DIVISION BY TELEPHONE, MADISON 9-410, EXT. 8531 AT LEAST TWENTY-FOUR HOURS BEFORE STARTING ANY WORK UNDER THIS CONTRACT.
 16. STANDARD SPECIFICATIONS DATED MAY 25, 1962, APPLY IN THE CONSTRUCTION OF THIS PROJECT.
 17. INLET AND OUTLET PLUGS IN MANHOLES TO BE CONSTRUCTED OF BRICKS AND CEMENT MORTAR.

NO CONNECTIONS FOR THE DISPOSAL OF INDUSTRIAL WASTE SHALL BE MADE TO SEWERS SHOWN ON THESE DRAWINGS WITHOUT WRITTEN PERMISSION FROM THE CHIEF ENGINEER AND GENERAL MANAGER OF THE COUNTY SANITATION DISTRICTS.

PROFILE ALIGNMENT AND GRADE OF P.C. 6136
 SANITARY SEWERS PAGE 1
 TO BE CONSTRUCTED IN J.N. 0357.63

R/W S/O MAPLEGROVE ST
 PRIVATE CONTRACT NO. 6136

W.S. 38
 1 SHEETS, 2 PAGES
 SCALE: VERT. 1" = 4'
 HORIZ. 1" = 40'
 MARCH 6, 1962
 PREPARED IN THE OFFICES OF

32396

SUBURBAN WATER SYSTEMS
 BY: A.H. Prichard
 REG. C. E. NO. 10435
 FOR LEGEND SEE PLAN NO. S-A-64

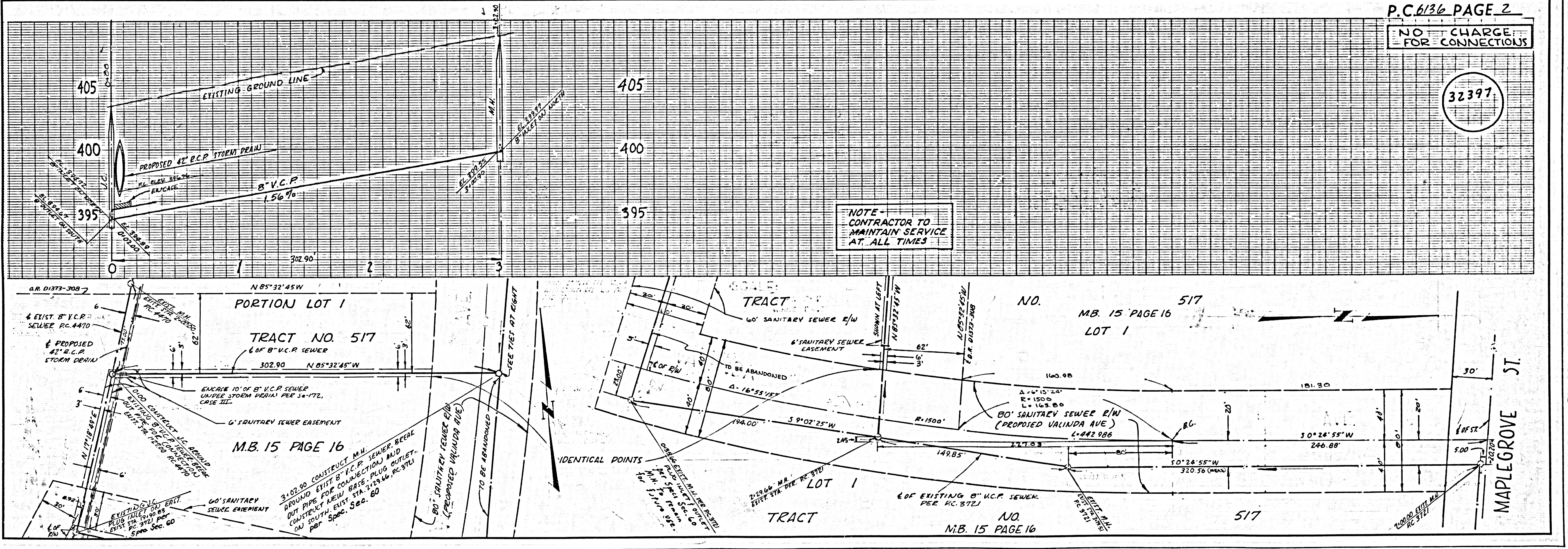
NOTE:
 GRADES TO WHICH THIS IMPROVEMENT IS TO BE CONSTRUCTED ARE SHOWN ON PLANS AND PROFILES. GRADE POINTS FOR TOP OF CURBS, CENTER LINE OF STREETS, OR CENTER LINE OF ALLEYS ARE SHOWN BY CIRCLES ON PROFILES. AT ALL POINTS BETWEEN DESIGNATED POINTS THE GRADE SHALL BE ESTABLISHED SO AS TO CONFORM TO A STRAIGHT LINE DRAWN BETWEEN SAID DESIGNATED POINTS.
 ELEVATIONS ARE IN FEET ABOVE U.S.C. & G.S. SEA LEVEL DATUM OF 1929.
 THIS DRAWING AND THE DATA HEREON ARE HEREBY MADE A PART OF THE SPECIFICATIONS. WORK SHALL BE CONSTRUCTED ACCORDING TO SPECIFICATIONS ON FILE IN THE OFFICE OF THE COUNTY ENGINEER AND SHALL BE PROSECUTED ONLY IN THE PRESENCE OF THE COUNTY ENGINEER.
 BEFORE WORK CAN BE STARTED, THE CONTRACTOR MUST OBTAIN A PERMIT TO EXCAVATE IN COUNTY STREETS FROM THE L.A. COUNTY ROAD DEPT., DISTRICT OFFICE NO. _____ AND PAY A FEE TO THE COUNTY ENGINEER, ROOM 300 CO. BLDG., 100 W. 2ND ST., L.A. _____ SUFFICIENT TO COVER THE COST OF CONSTRUCTION INSPECTION AND RECORD PLANS.
 APPROVAL OF THIS PLAN BY THE COUNTY OF LOS ANGELES DOES NOT CONSTITUTE A REPRESENTATION AS TO THE ACCURACY OF THE LOCATION OF OR THE EXISTENCE OR NON-EXISTENCE OF ANY UNDERGROUND UTILITY PIPE, OR STRUCTURE WITHIN THE LIMITS OF THIS PROJECT. THIS NOTE APPLIES TO ALL PAGES.
 IF WORK IS TO BE DONE IN A STATE HIGHWAY, A PERMIT MUST BE OBTAINED FROM THE STATE OF CALIFORNIA, DIVISION OF HIGHWAYS, 128 SOUTH SPRING STREET.

COUNTY OF LOS ANGELES, CALIFORNIA
 APPROVED, JOHN A. LAMBIE, COUNTY ENGINEER APPROVED, J.D. PARQUETT, CHIEF ENGINEER
 CO. SAN. DIST. NO. 15
 BY: [Signature] 4157 SANITATION ENGINEER BY: [Signature] OFFICE ENGINEER
 CHECKED BY: [Signature] OFFICE OF COUNTY ENGINEER, REG. C. E. NO. 2445
 SUBMITTED: W.C. [Signature] 5-25-67
 SAN DIMAS REGIONAL ENGINEER

P.C. 6136 PAGE 2

NO CHARGE FOR CONNECTIONS

32397



NOTE - CONTRACTOR TO MAINTAIN SERVICE AT ALL TIMES