

DOUBLE SCALE
ROLLING HILLS ESTATES BLDG. DIST. NO. 12.03

PROFILE ALIGNMENT AND GRADE OF P.C. 6139
SANITARY SEWERS PAGE 1
TO BE CONSTRUCTED IN
TRACTS 24940 & 25607

PRIVATE CONTRACT NO. 6139

W.S. 21

4 SHEETS; 8 PAGES

SCALE: VERT. 1"=4' MAY, 1962

PREPARED IN THE OFFICES OF
BARCLAY-PEARSON CO., INC.

By Edward L. Pearson
REG. C. E. NO. 2783

FOR LEGEND SEE PLAN NO. S.A.64

NOTE:
GRADES TO WHICH THIS IMPROVEMENT IS TO BE CONSTRUCTED ARE SHOWN ON PLANS AND PROFILES. GRADE POINTS FOR TOP OF CURBS, CENTER LINE OF STREETS, OR CENTER LINE OF ALLEYS ARE SHOWN BY CIRCLES ON PROFILES. AT ALL POINTS BETWEEN DESIGNATED POINTS THE GRADE SHALL BE ESTABLISHED SO AS TO CONFORM TO A STRAIGHT LINE DRAWN BETWEEN SAID DESIGNATED POINTS.
ELEVATIONS ARE IN FEET ABOVE U.S.C. & G.S. SEA LEVEL DATUM OF 1929.
THIS DRAWING AND THE DATA HEREON ARE HEREBY MADE A PART OF THE SPECIFICATIONS.
WORK SHALL BE CONSTRUCTED ACCORDING TO SPECIFICATIONS ON FILE IN THE OFFICE OF THE CITY ENGINEER AND SHALL BE PROSECUTED ONLY IN THE PRESENCE OF THE CITY ENGINEER.
BEFORE WORK CAN BE STARTED THE CONTRACTOR MUST OBTAIN A PERMIT TO EXCAVATE IN CITY STREETS FROM THE CITY ROAD DEPT. DISTRICT OFFICE NO. 2 AND PAY A FEE TO THE CITY ENGINEER, ROOM 310 COUNTY ENG. BLDG., 108 W. 2ND ST. LOS ANGELES SUFFICIENT TO COVER THE COST OF CONSTRUCTION INSPECTION AND RECORD PLANS.
APPROVAL OF THIS PLAN BY THE CITY OF ROLLING HILLS ESTADOS DOES NOT CONSTITUTE A REPRESENTATION AS TO THE ACCURACY OF THE LOCATION OR OF THE EXISTENCE OR NON-EXISTENCE OF ANY UNDERGROUND UTILITY PIPE, OR STRUCTURE WITHIN THE LIMITS OF THIS PROJECT. THIS NOTE APPLIES TO ALL WORK TO BE DONE IN A STATE HIGHWAY, DIVISION OF HIGHWAYS, 120 SOUTH SPRING STREET.

CITY OF ROLLING HILLS, ESTADOS, CALIFORNIA

APPROVED, JOHN A. LAMBIE, CITY ENGINEER APPROVED, J.B. PARKHURST CHIEF ENGINEER

CO. SAN. DIST. NO. 5

BY *E.L. Pearson* SANITATION ENGINEER BY *J.P. Belmont* OFFICE ENGINEER

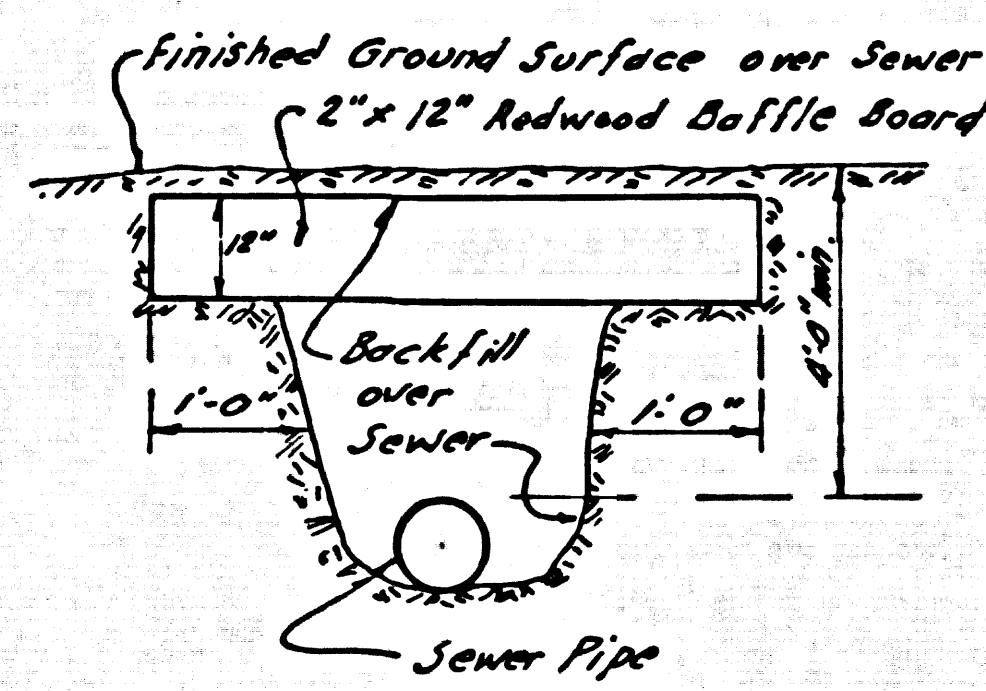
CHECKED BY *M. Duda* T-312

OFFICE OF CITY ENGINEER, REG. C. E. NO. 3446

Submitted *Jack C. Lousiana*
Palos Verdes - Central Valley Regional Engineer

B.M. SY 3528 El. + 119.689 L. & B.N.
E. Curb Narbonne Ave. 5' N. of Curb Return
@ N.E. Corner Narbonne Ave. & Pacific Coast Hwy.
Palos Verdes 1955

2" x 12" REDWOOD BAFFLE BOARD DETAIL



1. Each end of baffle board will extend one foot into undisturbed ground.
2. Baffles will be so spaced that the top of the lower baffle shall be level with the bottom of the upper baffle board.
3. The upper layer of backfill to be 1 foot min. of top soil. Top soil shall be tamped in place and planted with ice plant and adequately watered until growth is restored.

Scale 1"=60'

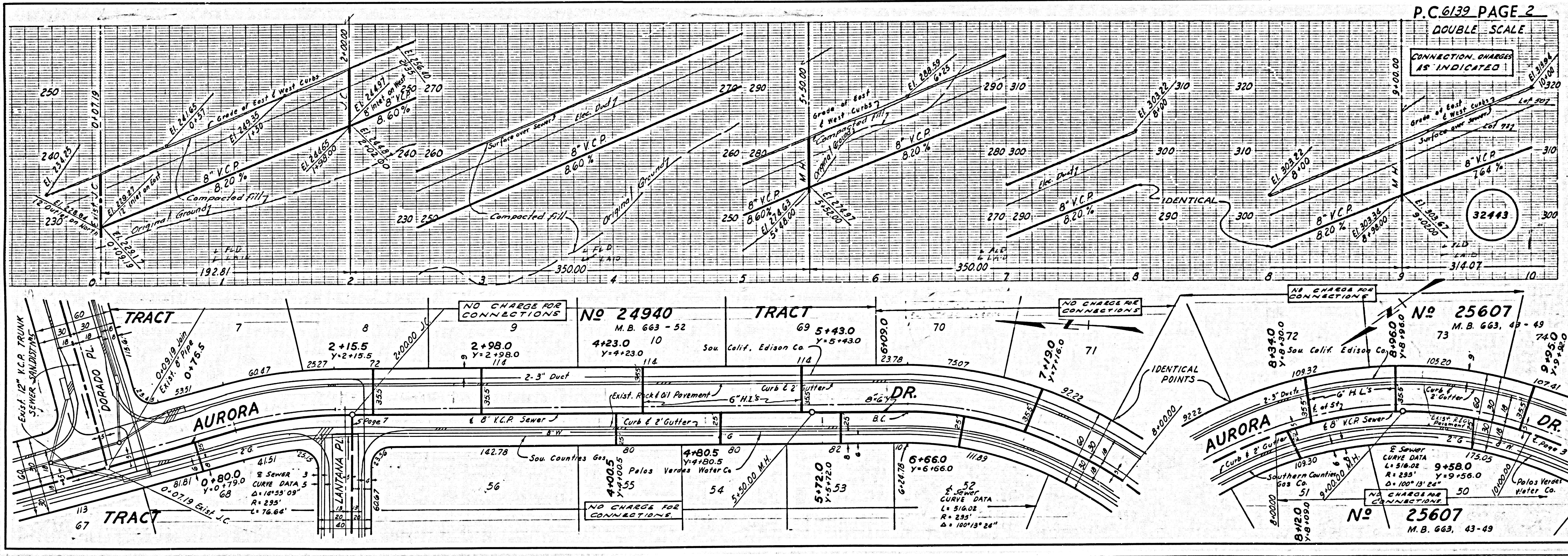
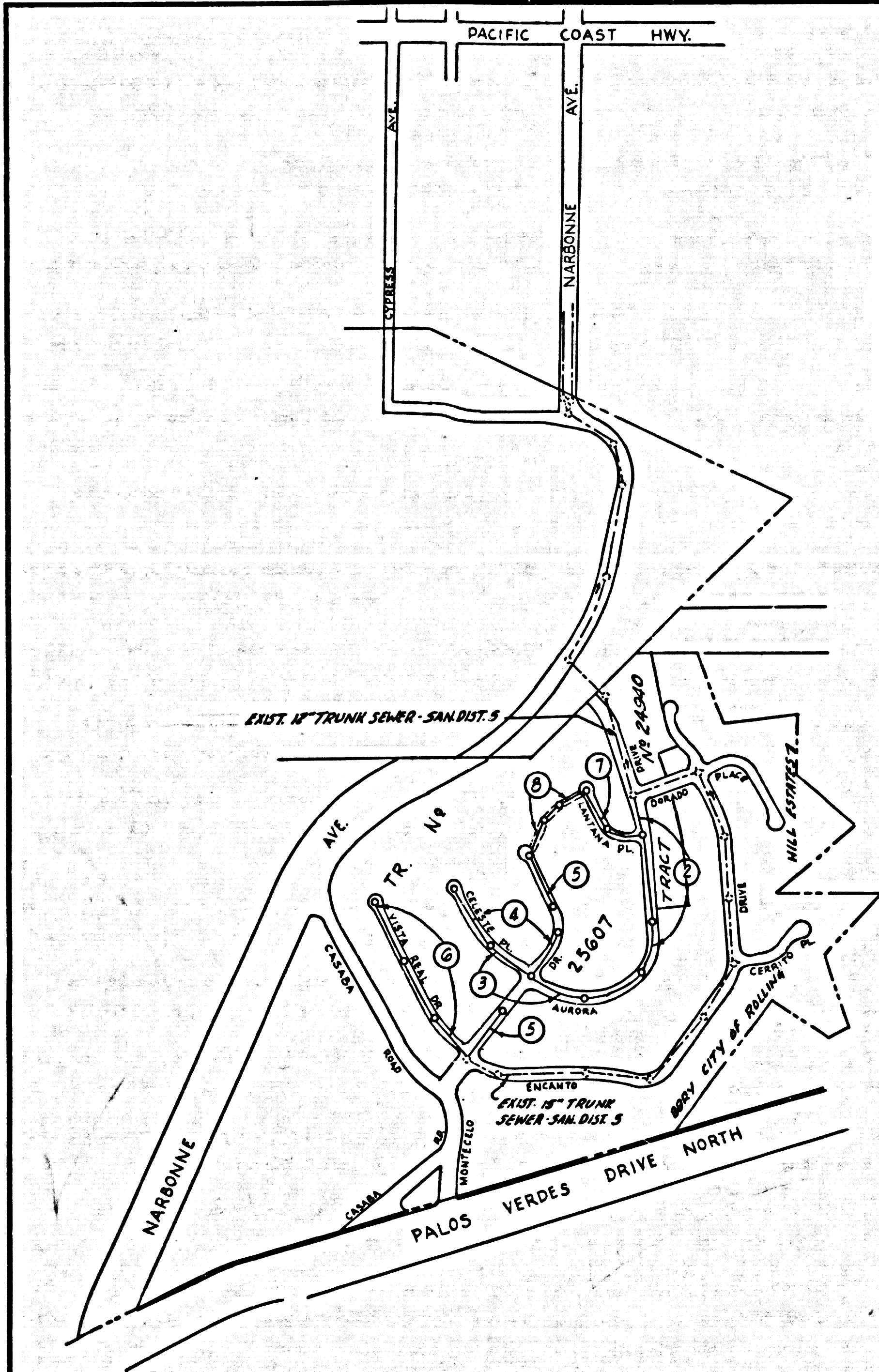
INDEX MAP
TRACTS 25607 & 24940
P.C. 6139

CONNECTION CHARGES AS INDICATED

L. L. Lister 7-26-62

NO CONNECTIONS FOR THE DISPOSAL OF INDUSTRIAL WASTES SHALL BE MADE TO SEWERS SHOWN ON THESE DRAWINGS WITHOUT WRITTEN PERMISSION FROM THE CHIEF ENGINEER AND GENERAL MANAGER OF THE COUNTY SANITATION DISTRICTS.!!

BEFORE BREAKING INTO ANY EXISTING STRUCTURE AND BEFORE FINAL ACCEPTANCE OF THIS WORK, COUNTY SANITATION DISTRICT (DU 4-1281) SHALL BE NOTIFIED IN ORDER THAT REQUIRED INSPECTION CAN BE MADE.

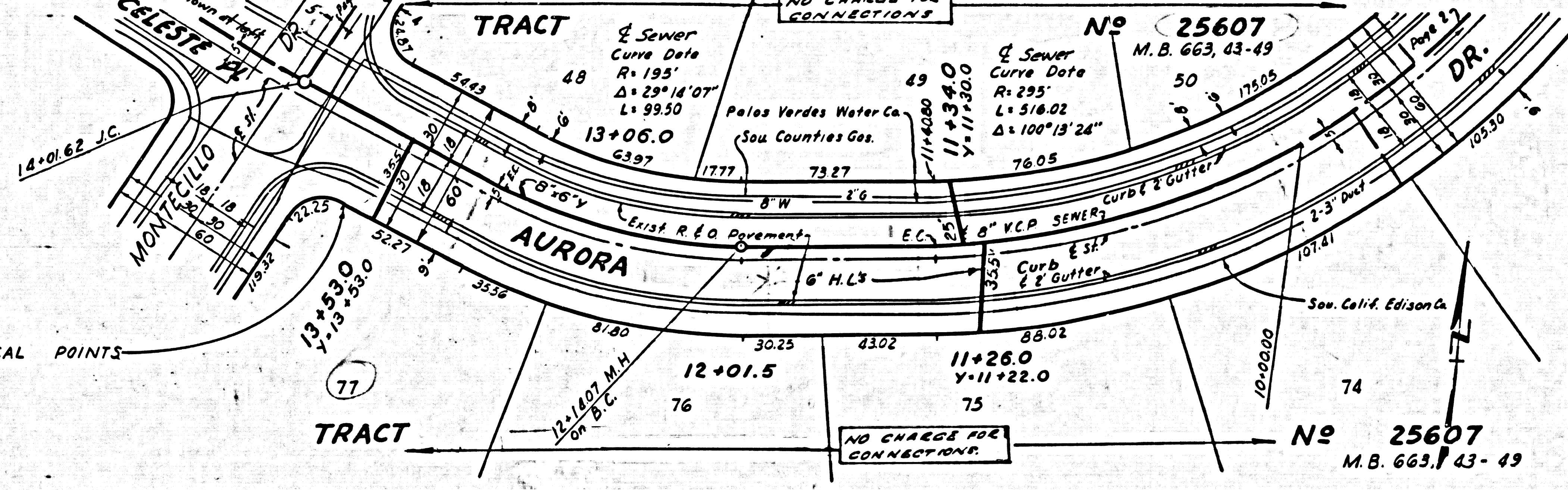
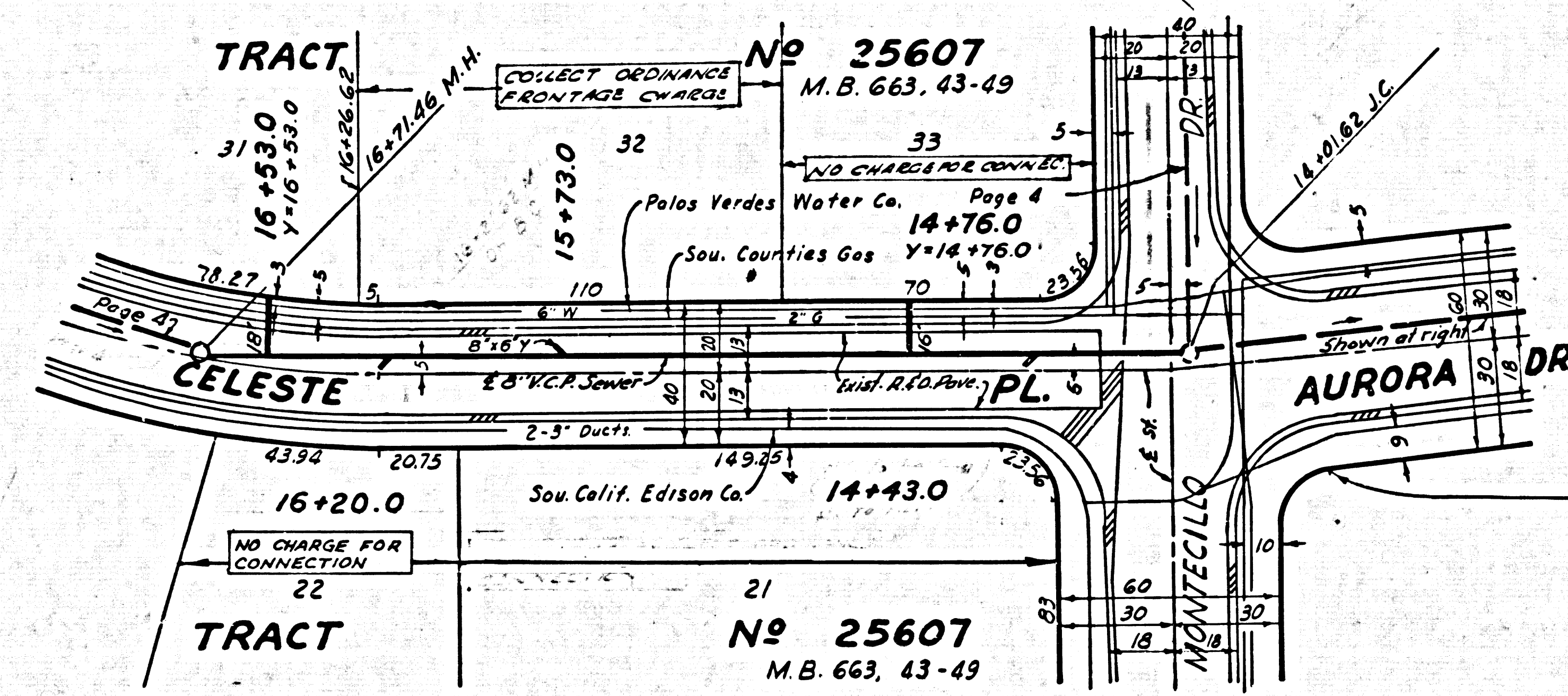
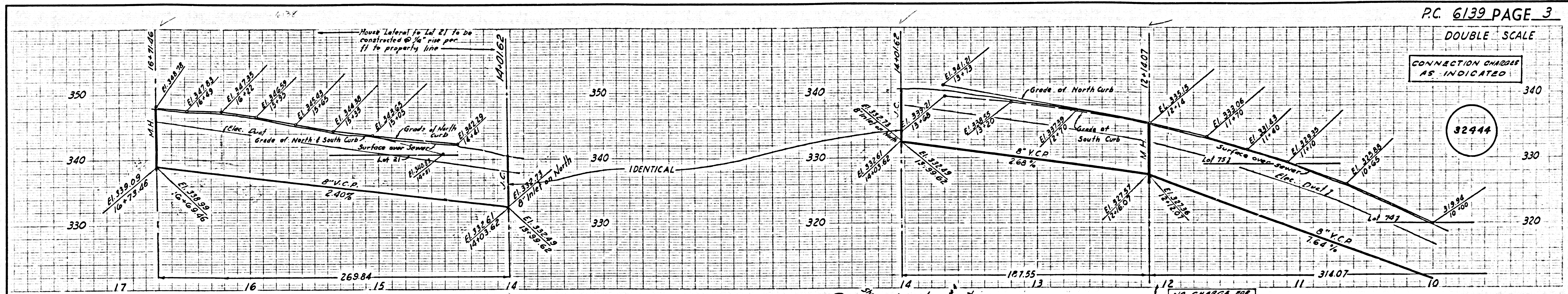


P.C. 6139 PAGE 2
DOUBLE SCALE

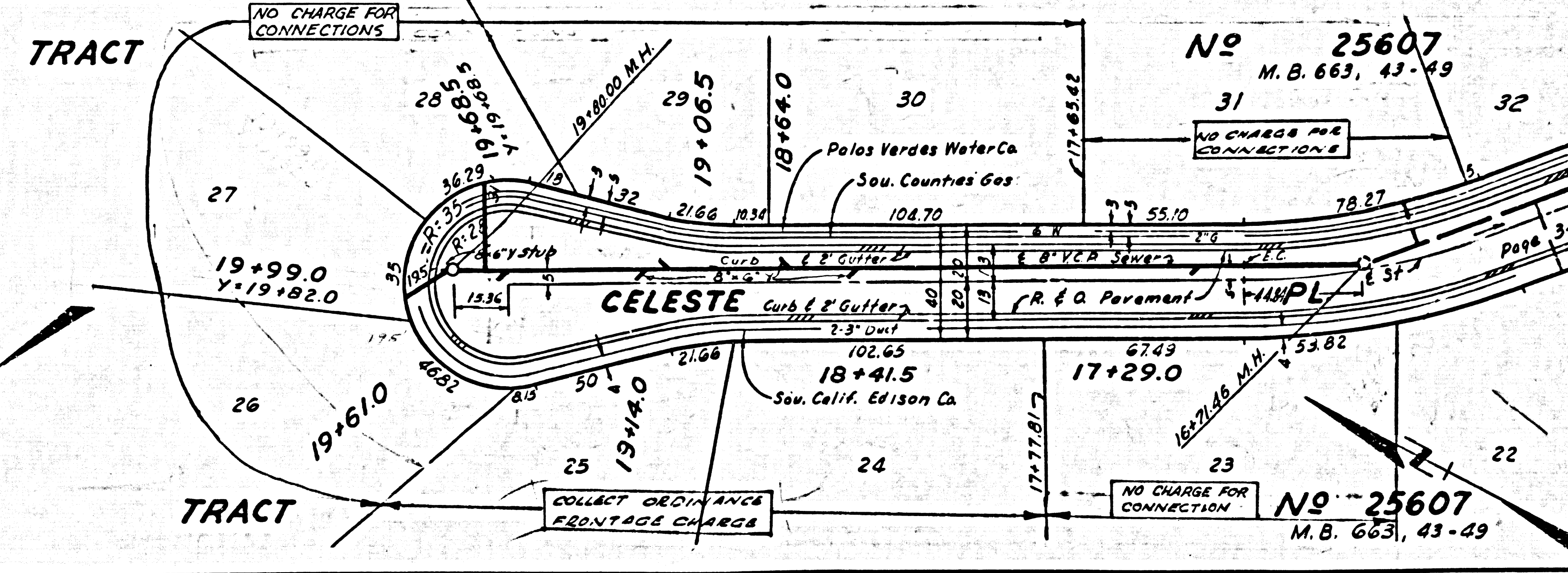
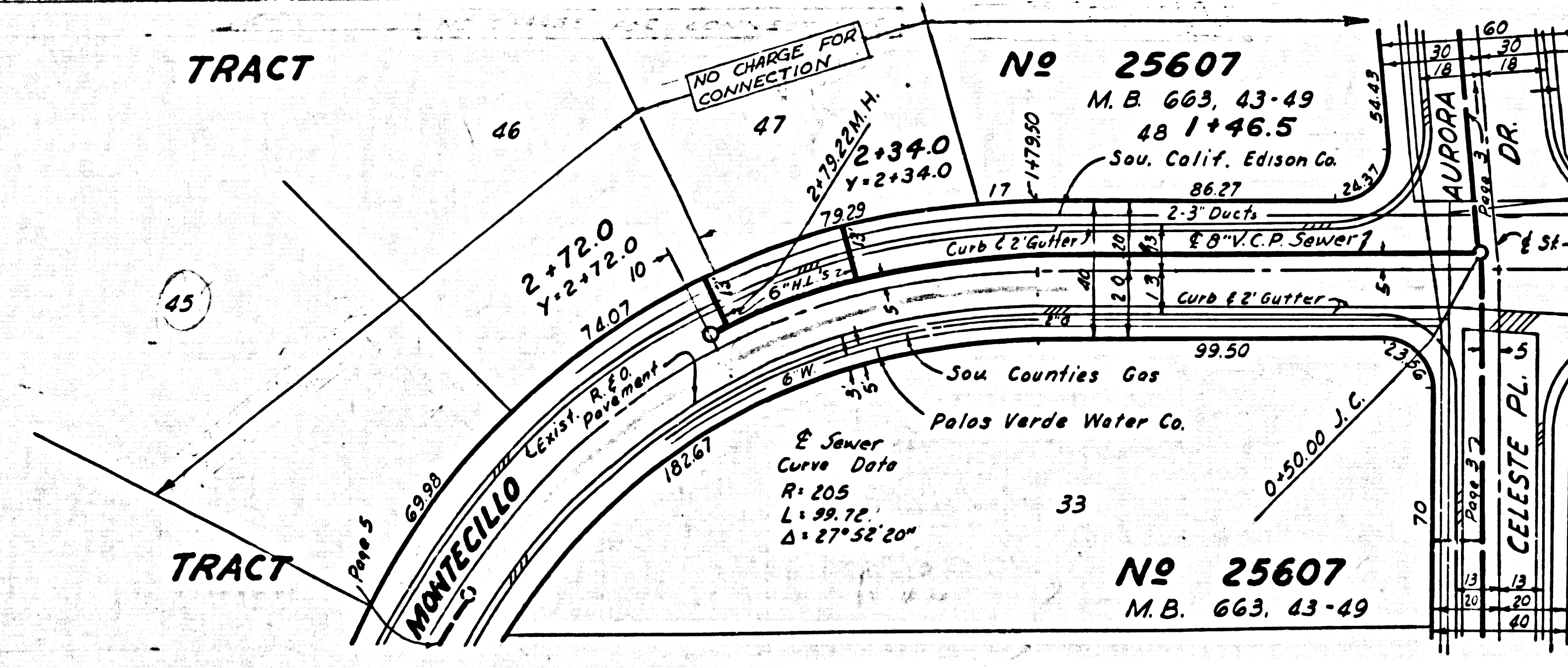
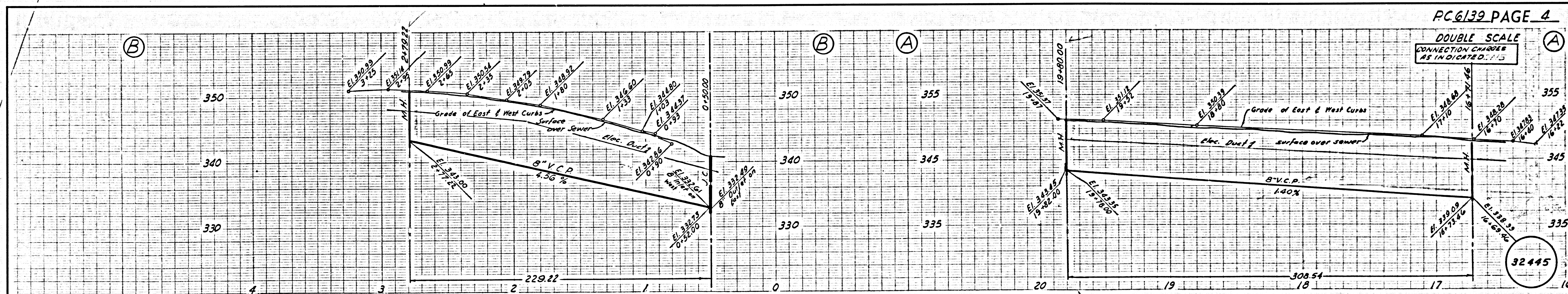
CONNECTION CHARGES AS INDICATED

32443

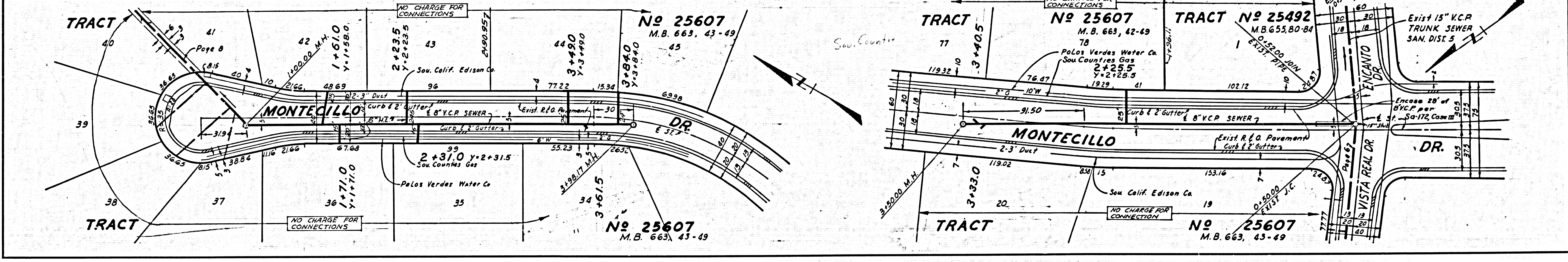
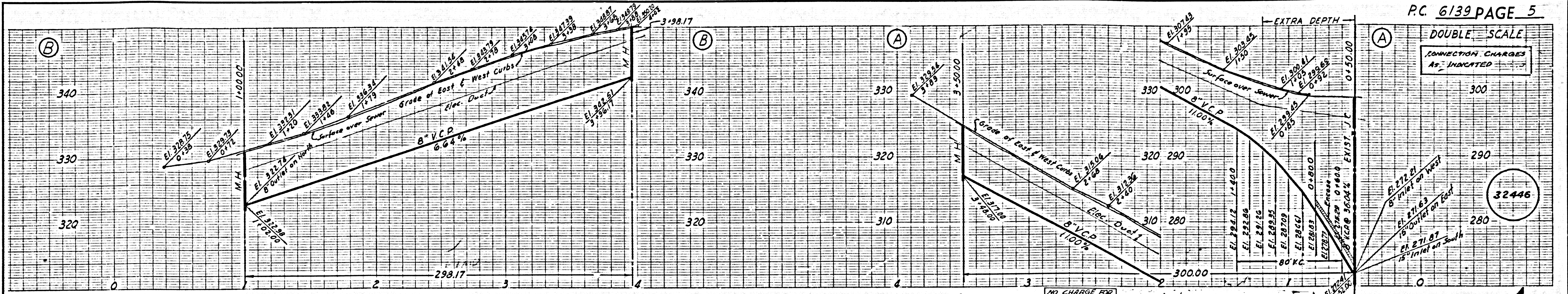
CONNECTION CHARGES AS INDICATED



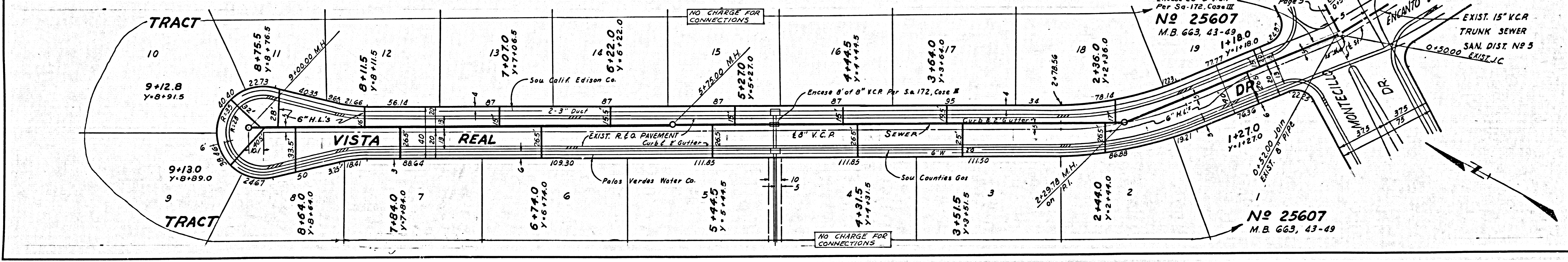
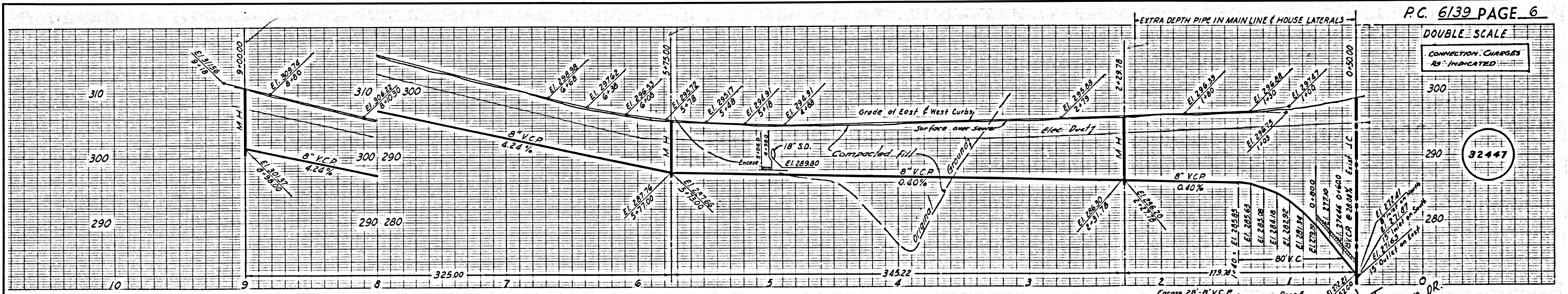
DOUBLE SCALE
CONNECTION CHARGES AS INDICATED



DOUBLE SCALE
CONNECTION CHARGES
AS INDICATED

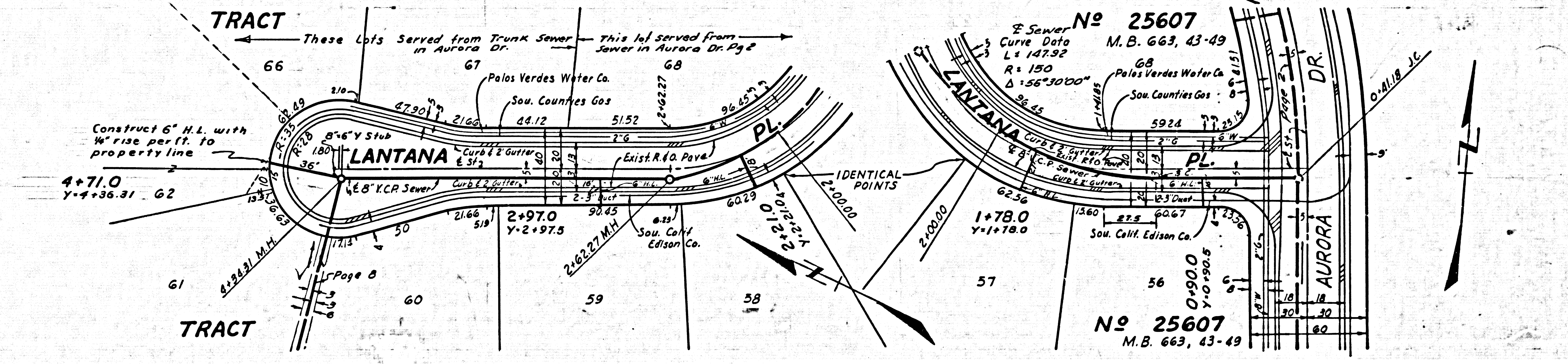
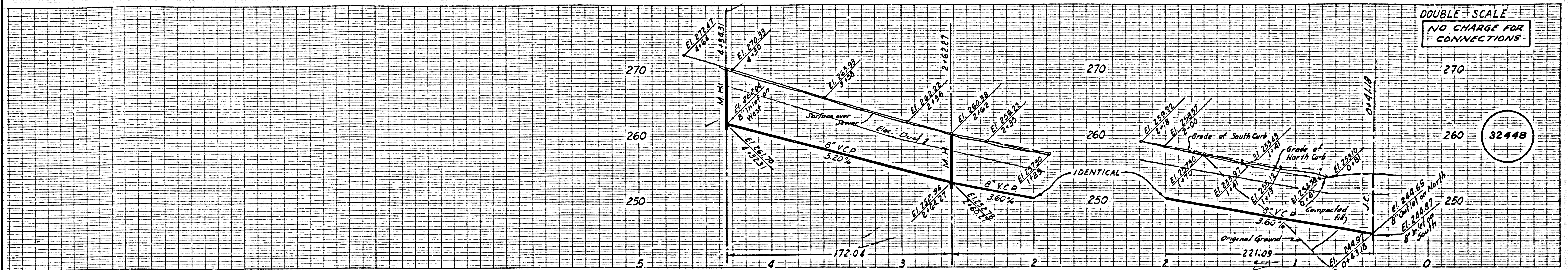


DOUBLE SCALE
CONNECTION CHARGES
AS INDICATED



DOUBLE SCALE
NO CHARGE FOR
CONNECTIONS

32448



DOUBLE SCALE
NO CHARGE FOR
CONNECTIONS

32449

