

DOUBLE SCALE
LA MIRADA BLDG. DIST. NO. 4.08

PROFILE ALIGNMENT AND GRADE OF P.C. 6143

SANITARY SEWERS PAGE 1

TO BE CONSTRUCTED IN

TRACT NO. 25138

PRIVATE CONTRACT NO. 6143

W.S. 34

4 SHEETS; 7 PAGES

SCALE: VERT. 1" = 4' HORIZ. 1" = 40'

APRIL, 1962

PREPARED IN THE OFFICES OF

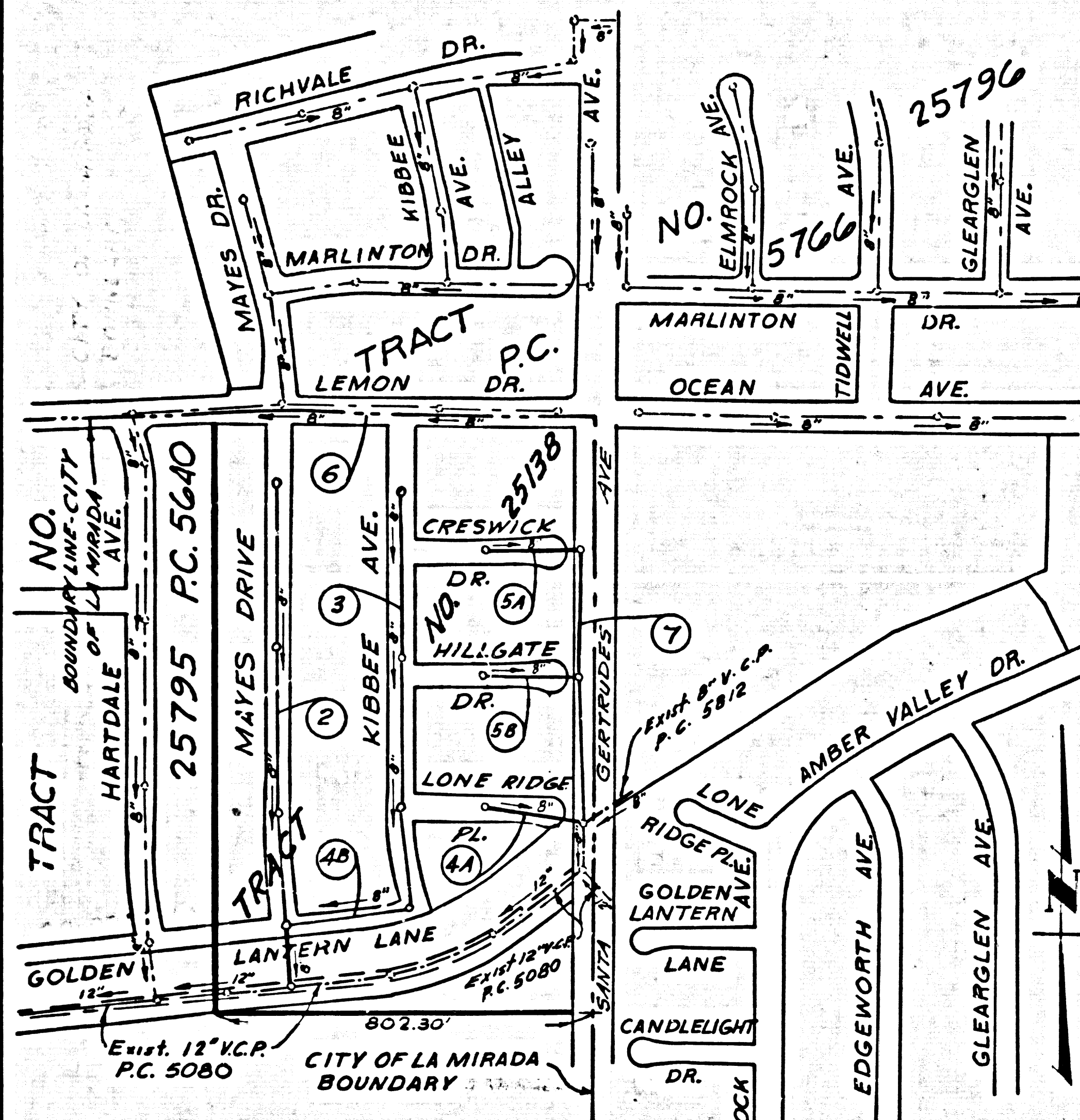
KEMMERER, ENGR. CO., INC.

By: Robert R. Flores

REG. C. E. NO. 11842

FOR LEGEND SEE PLAN NO. S.A-64

35064



INDEX MAP
TRACT NO. 25138
P.C. 6143 SCALE: 1" = 300'

NOTE:
THE EXISTENCE AND APPROX. LOCATION OF ANY UNDERGROUND UTILITY PIPES OR STRUCTURES SHOWN ON THESE PLANS ARE OBTAINED BY A SEARCH OF THE AVAILABLE RECORDS, TO THE BEST OF OUR KNOWLEDGE THERE ARE NO EXISTING UTILITIES EXCEPT AS SHOWN ON THESE DRAWINGS. THE CONTRACTOR IS REQUIRED TO TAKE DUE PRECAUTIONARY MEASURES TO PROTECT THE UTILITY LINES SHOWN AND ANY OTHER LINES NOT OF RECORD OR NOT SHOWN ON THESE DRAWINGS. IT SHALL BE THE CONTRACTOR'S RESPONSIBILITY TO NOTIFY OWNERS OF THE UTILITIES OR STRUCTURES CONCERNED BEFORE STARTING WORK.

REVISION
REVISED NOTE 11, ADDED CIRCLES AT ENDS OF HOUSE LATERALS FOR LOTS 30, 31, 32 & 33. P. 2. ADDED HORIZONTAL CURVE PAGE 4-A BETWEEN STA. 0+47.00 & STA. 0+57.00
7-8-64 DATE

BENCH MARK:
SV 4016 L&BN East Edga Conc. Drive
10 HOUSE NO. 15743 Lemon Dr. 446' N. C/L.
Lemon Dr. 2251' N. C/L. Santa Gertrudis Av.
Elev. 246.050 La Mirada Quad. 1955

NO CHARGE FOR CONNECTIONS
5-3-62

- NOTES:
- PROVIDE STAKES ON THE PROPERTY LINE OR PROPERTY LINES PRODUCED AT RIGHT ANGLES TO THE SEWER LINE AT THE CENTER LINE OF EACH MANHOLE.
 - NO REPRESENTATIVE OF THE CITY ENGINEER WILL SURVEY OR LAY OUT ANY PORTION OF THE WORK.
 - THE OWNER OR HIS AUTHORIZED REPRESENTATIVE SHALL FURNISH THE CITY ENGINEER WITH GRADE SHEETS AND STATIONING FOR ALL HOUSE LATERALS AND BRANCHES AND SHALL PROVIDE STAKES FOR THEM AT THEIR PROPER LOCATIONS WITH STATIONING PLAINLY MARKED. ANY CHANGE IN LOCATION SHALL BE REQUESTED IN WRITING BY THE OWNER OR HIS REPRESENTATIVE.
 - THE PRIVATE ENGINEER SHALL FURNISH THE HOUSE LATERAL DEPTH AT THE PROPERTY LINE BELOW THE TOP OF CURB ELEVATION FOR EACH HOUSE LATERAL ON THE GRADE SHEET.
 - NO REVISIONS SHALL BE MADE IN THESE PLANS WITHOUT THE APPROVAL OF THE CITY ENGINEER.
 - USE STANDARD MANHOLE FRAMES AND COVERS, S-117, SPEC. S, SEC. 54.
 - USE EXTRA STRENGTH PIPE ALL PIPE IS STANDARD DEPTH EXCEPT AS NOTED.
 - USE CEMENT MORTAR OR "WEDGELOCK" OR "SPEED-SEAL" FOR ALL V.C.P. JOINTS PER SPEC., SECS. 36 & 48.
 - RESURFACE ALL TRENCH WITHIN PAVED AREA TO MEET L.A. COUNTY ROAD DEPT. OR CALIF. STATE HIGHWAY REQUIREMENTS IN ACCORDANCE WITH PERMITS.
 - ENCASE FOUR FEET OF SEWER AT POINTS OF INTERFERENCE WITH POLES, CASE III, S-117.
 - HOUSE LATERALS TO BE CONSTRUCTED WITH INVERTS AT PROPERTY LINE 6 FEET BELOW CURB GRADE EXCEPT AS NOTED. EXCEPTIONS ARE NOTED THROUOUT AT END OF HOUSE LATERALS.
 - ALL STRUCTURES SHALL BE BRICK SEWER STRUCTURES, S-104, EXCEPT AS NOTED.
 - FOR ALLOWABLE LEAKAGE TEST USE FORMULA NO. 1, SPEC. S, SEC. 54.
 - MANHOLE TOPS IN UNIMPROVED RIGHTS-OF-WAY TO BE SIX INCHES ABOVE FINISHED GRADE.
 - THE CONTRACTOR SHALL NOTIFY THE CONSTRUCTION DIVISION OF THE COUNTY ENGINEER BY TELEPHONE, MADISON 5-474, AT LEAST TWENTY-FOUR HOURS BEFORE STARTING ANY WORK UNDER THIS CONTRACT.
 - STANDARD SPECIFICATIONS DATED OCT. 25, 1961 APPLY IN THE CONSTRUCTION OF THIS PROJECT.
 - (a) NO CONSTRUCTION WILL BE PERMITTED IN FILLED AREAS UNLESS ACCEPTABLE CERTIFICATION IS SUBMITTED TO THE CONSTRUCTION DIVISION OF THE COUNTY ENGINEER'S DEPT. THAT COMPACTION IS GREATER THAN 80%.
(b) IF COMPACTION IS LESS THAN 90% THE SEWER MUST BE GRADED AS SHOWN ON PLANS (PER S-117, SEC. 54-166).
(c) IF COMPACTION IS GREATER THAN 90%, CRADLING OR SPECIAL M.H. BASES ARE NOT REQUIRED, HOWEVER JOINT COMPOUND MUST BE SUBSTITUTED FOR CEMENT MORTAR FOR ALL JOINTS IN FILLED AREAS.

NO CONNECTIONS FOR THE DISPOSAL OF INDUSTRIAL WASTES SHALL BE MADE TO SEWERS SHOWN ON THESE DRAWINGS WITHOUT WRITTEN PERMISSION FROM THE CHIEF ENGINEER AND GENERAL MANAGER OF THE COUNTY SANITATION DISTRICTS.

NOTE:
GRADES TO WHICH THIS IMPROVEMENT IS TO BE CONSTRUCTED ARE SHOWN ON PLANS AND PROFILES. GRADE POINTS FOR TOP OF CURBS, CENTER LINE OF STREETS OR CENTER LINE OF ALLEYS ARE SHOWN BY CIRCLES ON PROFILES. AT ALL POINTS BETWEEN DESIGNATED POINTS THE GRADE SHALL BE ESTABLISHED SO AS TO CONFORM TO A STRAIGHT LINE DRAWN BETWEEN SAID DESIGNATED POINTS.
ELEVATIONS ARE IN FEET ABOVE U.S.C. & G.S. SEA LEVEL DATUM OF 1929.
THIS DRAWING AND THE DATA HEREON ARE HEREBY MADE A PART OF THE SPECIFICATIONS.
WORK SHALL BE CONSTRUCTED ACCORDING TO SPECIFICATIONS ON FILE IN THE OFFICE OF THE CITY ENGINEER AND SHALL BE PROSECUTED ONLY IN THE PRESENCE OF THE CITY ENGINEER.
BEFORE WORK CAN BE STARTED, THE CONTRACTOR MUST OBTAIN A PERMIT TO EXCAVATE IN COUNTY STREETS FROM THE L.A. COUNTY ROAD DEPT., DISTRICT OFFICE NO. 4, 422 WEST 4th STREET, LOS ANGELES, CALIF. 90013.
IF WORK IS TO BE DONE IN A STATE HIGHWAY, A PERMIT MUST BE OBTAINED FROM THE STATE OF CALIFORNIA, DIVISION OF HIGHWAYS, 124 SOUTH SPRING STREET, LOS ANGELES, CALIF. 90012.

CITY OF LA MIRADA ANGELES, CALIFORNIA

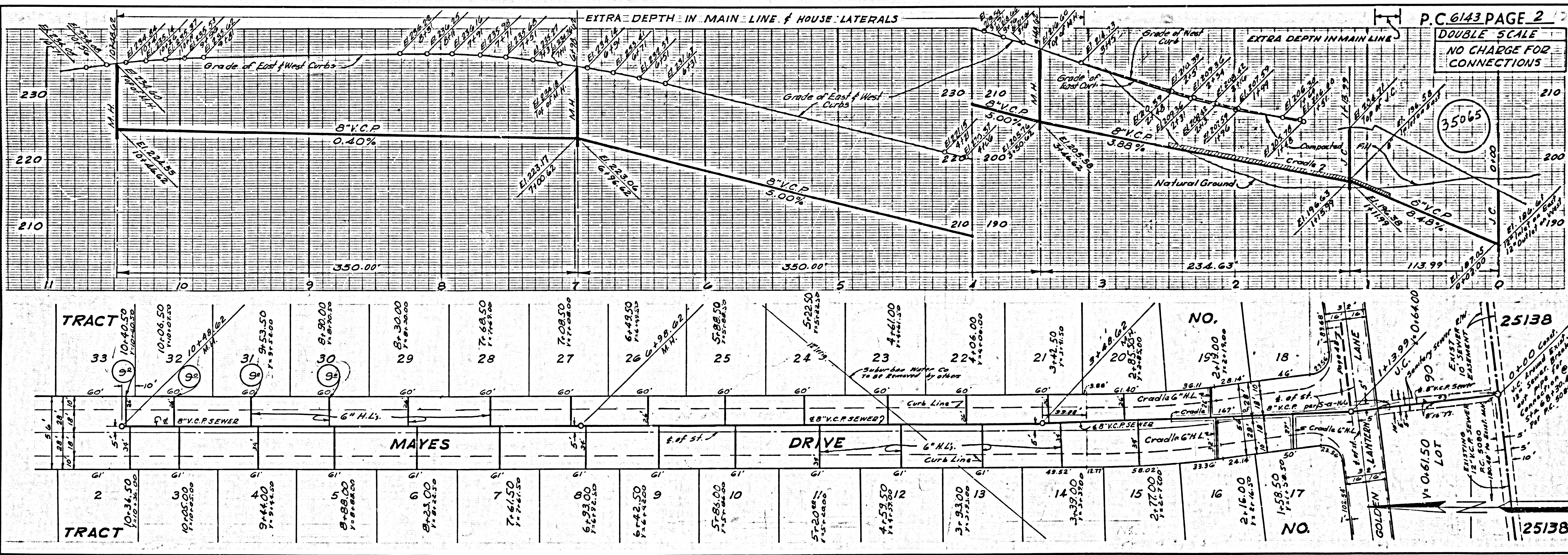
APPROVED, JOHN A. LAMBIE, CITY ENGINEER APPROVED, J. J. FERNANDEZ, CHIEF ENGINEER

By: [Signature] ASST. SANITATION ENGINEER By: [Signature] OFFICE ENGINEER

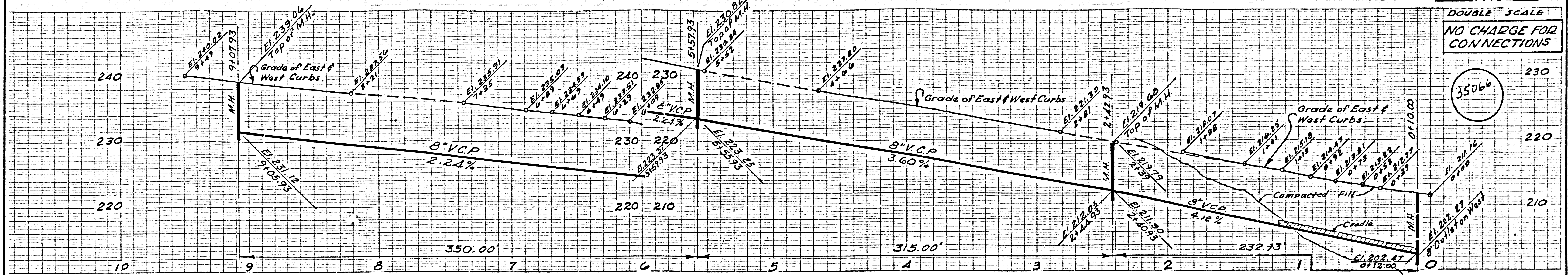
CHECKED BY: [Signature] OFFICE OF CITY ENGINEER, REG. C. E. NO. 3441

SUBMITTED BY: [Signature] F-3-62

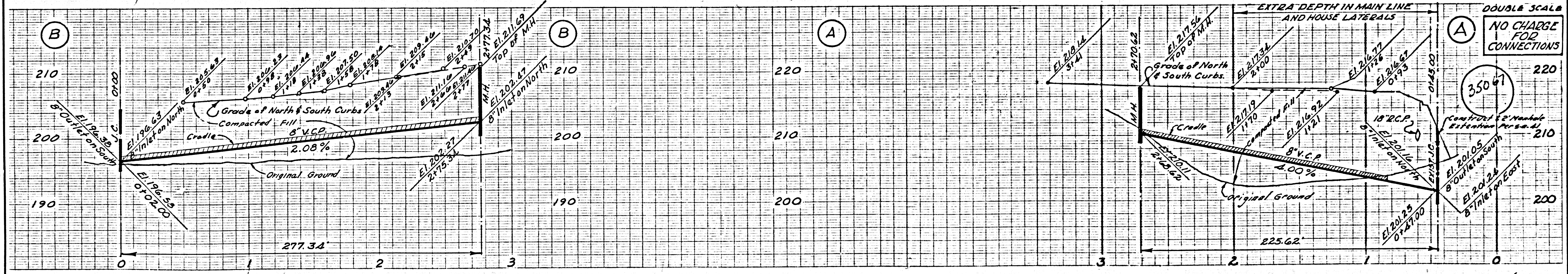
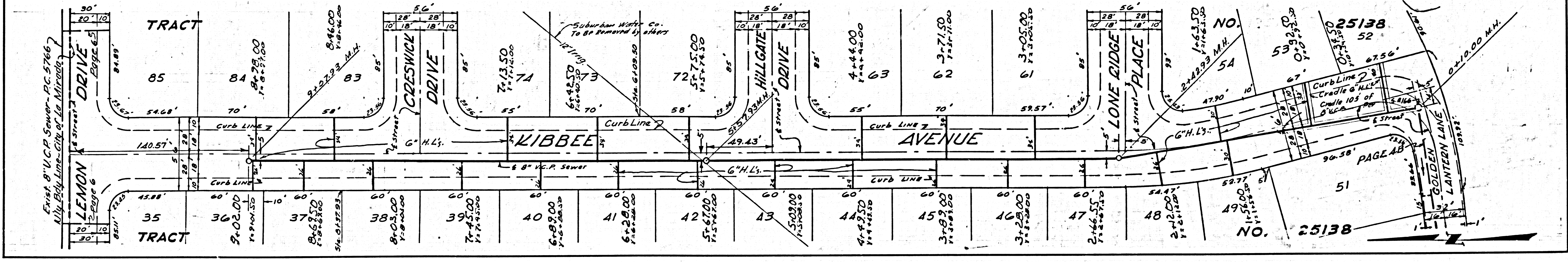
CERRITOS REGIONAL ENGINEER R.C.E. 3871



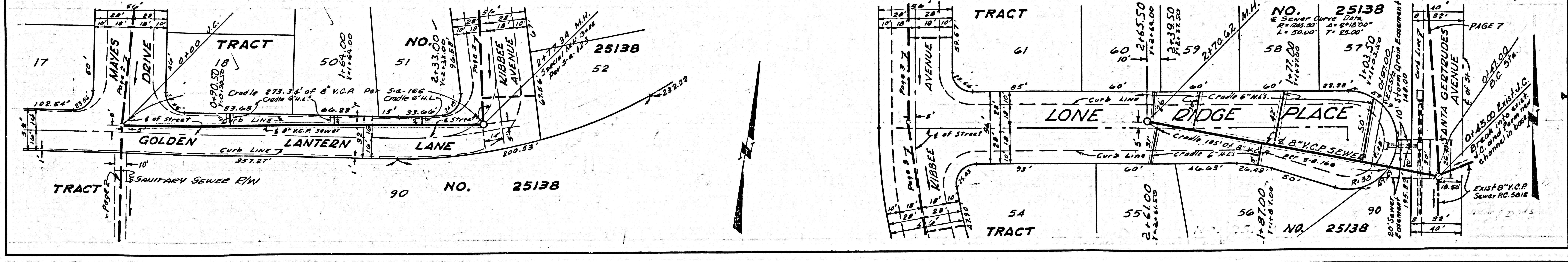
P.C. 6143 PAGE 2
DOUBLE SCALE
NO CHARGE FOR CONNECTIONS
35065



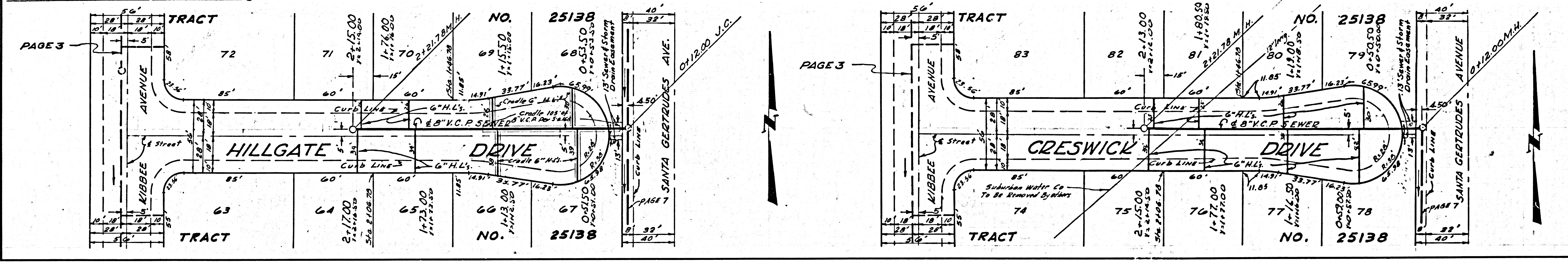
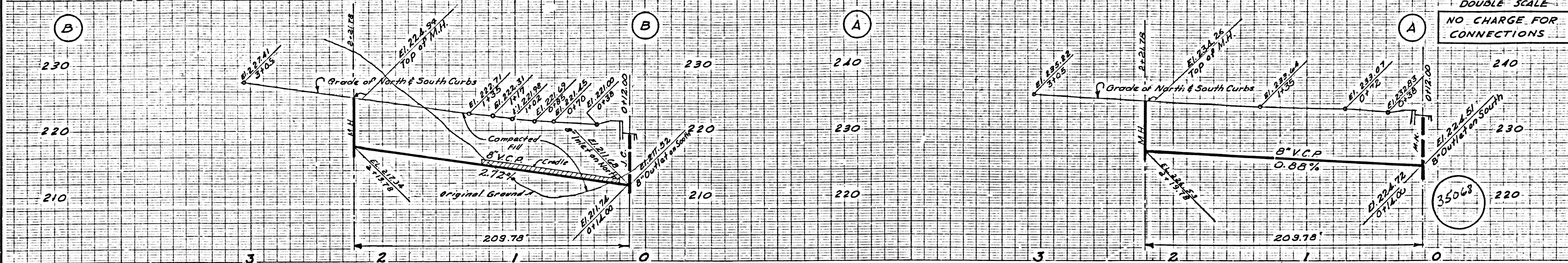
DOUBLE SCALE
NO CHARGE FOR CONNECTIONS



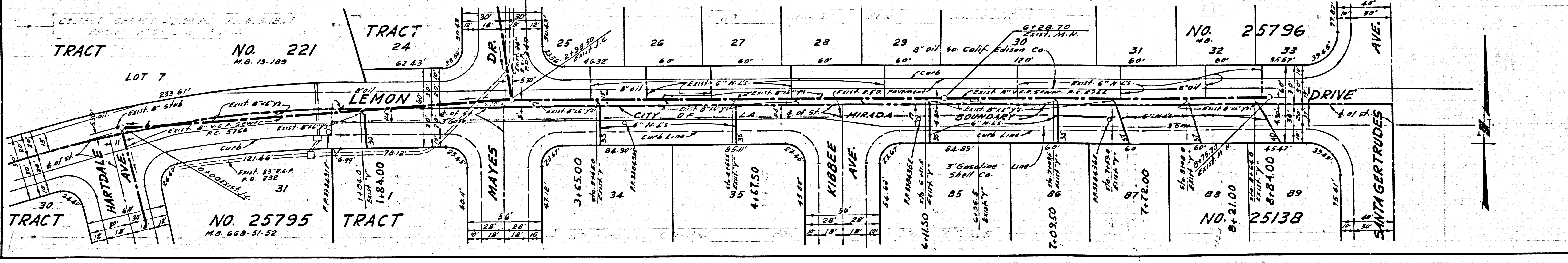
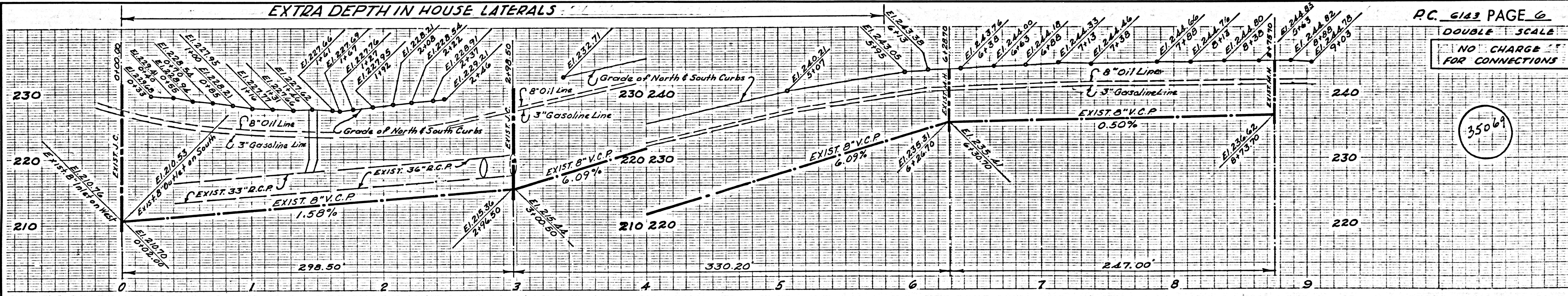
DOUBLE SCALE
NO CHARGE FOR CONNECTIONS



DOUBLE SCALE
NO CHARGE FOR CONNECTIONS



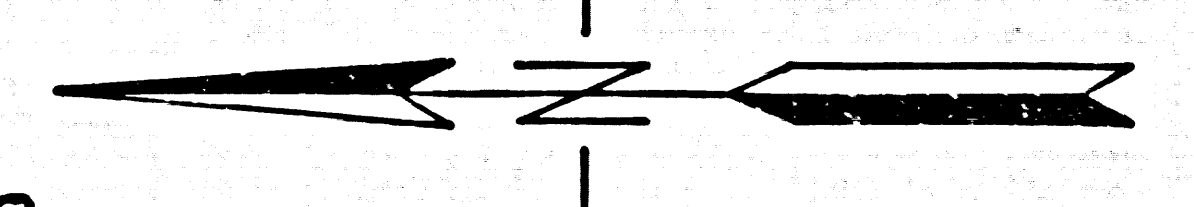
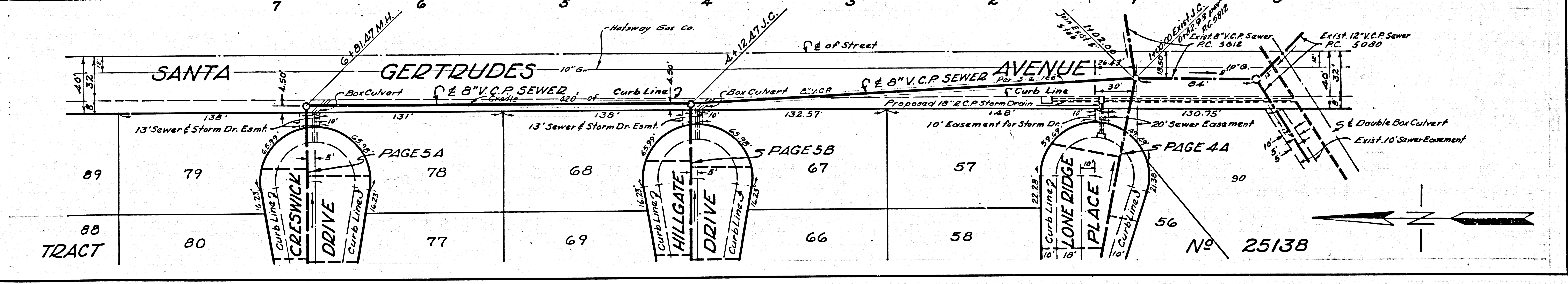
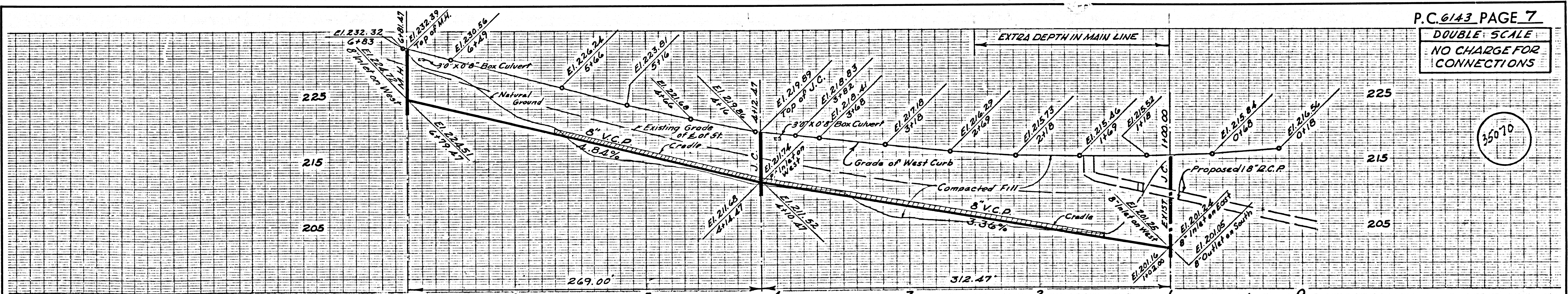
DOUBLE SCALE
NO CHARGE FOR CONNECTIONS



P.C. 6143 PAGE 7

DOUBLE SCALE
NO CHARGE FOR
CONNECTIONS

35070



No. 25138