

TO BE CONSTRUCTED IN TRACT NO. 27161

PRIVATE CONTRACT NO. 6145

W.S. 33

3 SHEETS; 6 PAGES

SCALE: VERT. 1" = 4' HORIZ. 1" = 40' JANUARY 1963

PREPARED IN THE OFFICES OF PARAMOUNT ENGINEERING COMPANY 8921 BEVERLY BOULEVARD LOS ANGELES, CALIFORNIA

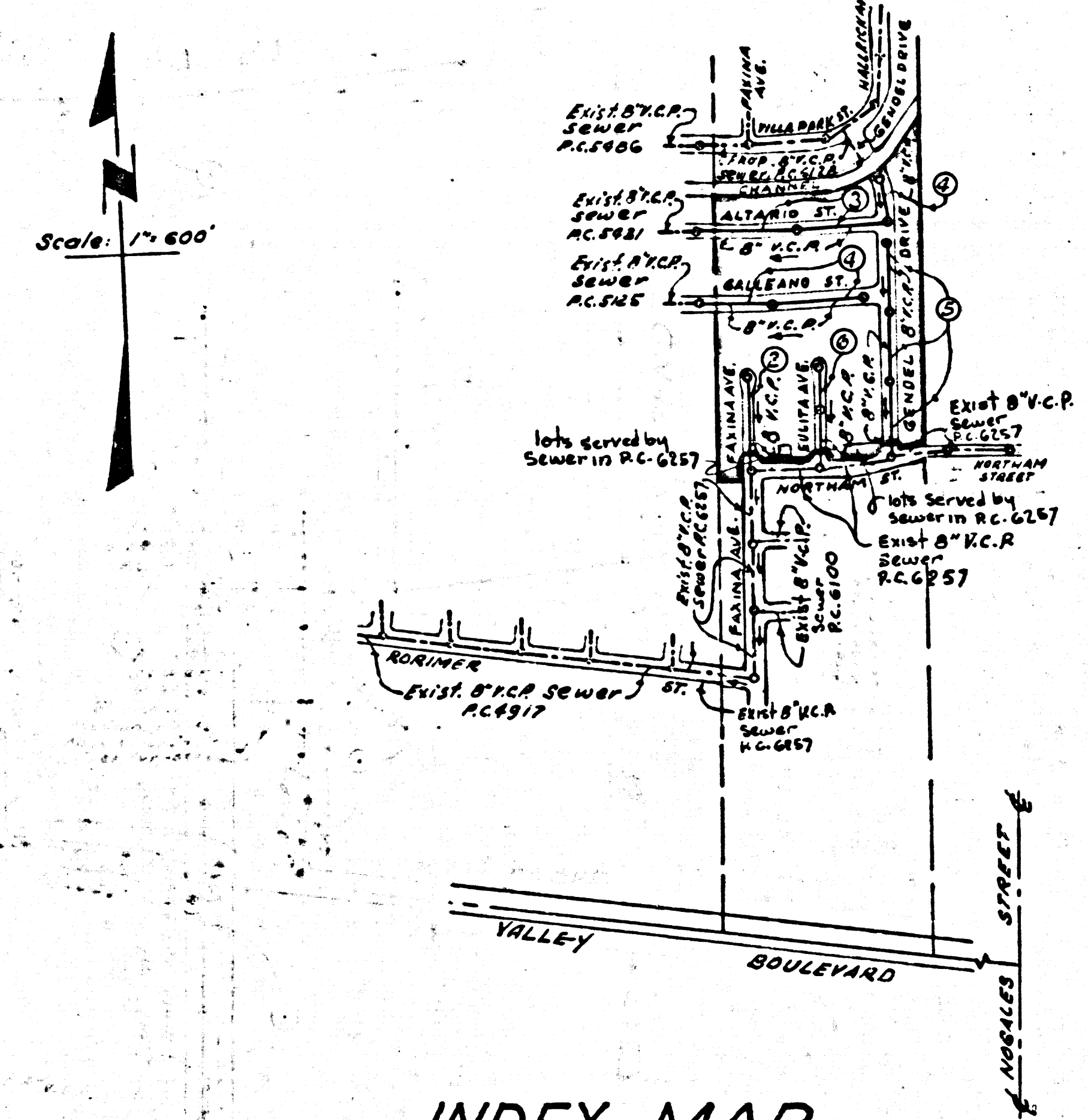
By: *Kenneth Nelson* REG. C. E. NO. 12955

FOR LEGEND SEE PLAN NO. S-A-64

PUENTE BLDG. DIST. NO. 2

- NOTES:
1. PROVIDE STAKES ON THE PROPERTY LINE OR PROPERTY LINES PRODUCED AT RIGHT ANGLES TO THE SEWER LINE AT THE CENTER LINE OF EACH MANHOLE.
  2. NO REPRESENTATIVE OF THE COUNTY ENGINEER WILL SURVEY OR LAY OUT ANY PORTION OF THE WORK.
  3. THE PRIVATE ENGINEER SHALL FURNISH THE COUNTY ENGINEER WITH GRAB SAMPLES AND STATIONING FOR ALL HOUSE LATERALS AND Y-BENDS AND SHALL PROVIDE STAKES FOR THEM BY THEIR PROPER LOCATIONS WITH STATIONING CLEARLY MARKED ALL HOUSE LATERALS SHALL BE CONSTRUCTED IN A STRAIGHT ALIGNMENT TO THE MAIN LINE FROM THE MAIN LINE SEWER EXCEPT AS SHOWN ON PLANS. HOUSE LATERALS FROM CHIMNEYS SHALL NOT HAVE AN ANGLE OF LESS THAN 45 DEGREES WITH THE MAIN LINE. CHANGES IN ALIGNMENT SHALL BE REQUESTED IN WRITING BY THE PRIVATE ENGINEER.
  4. THE PRIVATE ENGINEER SHALL FURNISH THE HOUSE LATERAL DEPTH AT THE PROPERTY LINE BELOW THE TOP OF CURB ELEVATION FOR EACH HOUSE LATERAL ON THE GRADE SHEET.
  5. NO REVISIONS SHALL BE MADE IN THESE PLANS WITHOUT THE APPROVAL OF THE COUNTY ENGINEER.
  6. USE STANDARD MANHOLE FRAMES AND COVERS, S-A-111.
  7. USE EXTRA STRENGTH PIPE, ALL PIPE STANDARD DEPTH, EXCEPT AS NOTED.
  8. USE CEMENT MORTAR OR MECHANICAL COMPRESSION JOINTS FOR ALL V.C.P. JOINTS IN MAIN LINE.
  9. RESURFACE ALL TRENCH WITHIN PAVED AREA TO MEET L.A. COUNTY ROAD DEPT. OR CALIF. STATE HIGHWAY REQUIREMENTS IN ACCORDANCE WITH PERMITS.
  10. USE MECHANICAL COMPRESSION JOINTS FOR ALL V.C.P. HOUSE LATERALS FOR SPEC'S SEC. 36 (4) 9.
  11. HOUSE LATERALS TO BE CONSTRUCTED WITH INVERTS AT PROPERTY LINE 6 FEET BELOW CURB GRADE EXCEPT AS NOTED.
  12. ALL STRUCTURES SHALL BE BRICK SEWER STRUCTURES, 5-104 PRECAST CONCRETE MANHOLES PER S-C-135 OR S-C-173 MAY BE USED AS ALTERNATE IN LOCATIONS APPROVED BY THE COUNTY ENGINEER.
  13. FOR ALLOWABLE LEAKAGE TEST USE FORMULA NO. 10, SPEC. 34.
  14. MANHOLE TOPS IN UNIMPROVED RIGHTS-OF-WAY TO BE SIX INCHES ABOVE FINISHED GRADE.
  15. THE CONTRACTOR SHALL NOTIFY THE CONSTRUCTION DIVISION BY TELEPHONE, MADISON 5-4747, EXT. 6561 AT LEAST TWENTY-FOUR HOURS BEFORE STARTING ANY WORK UNDER THIS CONTRACT.
  16. ALL STATE AND LOCAL TRAVEL SAFETY ORDERS SHALL BE RIGIDLY ENFORCED.
  17. WHENEVER EMBANKMENT WATER IS ENCOUNTERED DURING THE CONSTRUCTION OF THE SEWERS, THE V.C.P. POINTS SHALL BE OF JOINT COMPOUND PER SPEC'S SEC. 36 (4) OR MECHANICAL COMPRESSION JOINTS PER SPEC'S SEC. 36.
  18. IF A DOWN HOLE IS WITHIN THREE FEET OF THE SEWER, THE SEWER SHALL BE ENCASED PER S-C-173 CASE III. THE JOINT SHALL BE ON THE OUTSIDE FROM THE POINT OF INTERFERENCE.
  19. IF DURING THE COURSE OF CONSTRUCTION IT IS DETERMINED THAT THERE IS LESS THAN FOUR FEET OF COVER OVER THE TOP OF THE MAIN LINE OR HOUSE LATERAL V.C.P. SEWER WHICH IS INDICATED ON THE PLANS THE PIPE SHALL BE ENCASED PER S-C-173, CASE III, UNLESS OTHERWISE APPROVED BY THE COUNTY ENGINEER.

BENCH MARK: S.G. 1753  
 L&T. End Cb. ± 12' North B.C.R.  
 ± 82' North & Valley Blvd.  
 & ± 20' East & La Seda Road.  
 (Baseline) 1955 Adj.  
 Elevation 419.895



NO CHARGE FOR CONNECTIONS  
*Hand & Lockman*

FOR CONNECTIONS

NO CONNECTIONS FOR THE DISPOSAL OF INDUSTRIAL WASTES SHALL BE MADE TO SEWERS SHOWN ON THESE DRAWINGS WITHOUT WRITTEN PERMISSION FROM THE CHIEF ENGINEER AND GENERAL MANAGER OF THE COUNTY SANITATION DISTRICTS.

NOTE: GRADES TO WHICH THIS IMPROVEMENT IS TO BE CONSTRUCTED ARE SHOWN ON PLANS AND PROFILES. GRADE POINTS FOR TOP OF CURBS, CENTER LINE OF STREETS, OR CENTER LINE OF ALLEYS ARE SHOWN BY CIRCLES ON PROFILES. AT ALL POINTS BETWEEN DESIGNATED POINTS THE GRADE SHALL BE ESTABLISHED SO AS TO CONFORM TO A STRAIGHT LINE DRAWN BETWEEN SAID DESIGNATED POINTS. ELEVATIONS ARE IN FEET ABOVE U.S.C. & G.S. SEA LEVEL DATUM OF 1929. THIS DRAWING AND THE DATA HEREON ARE HEREBY MADE A PART OF THE SPECIFICATIONS. WORK SHALL BE CONSTRUCTED ACCORDING TO STANDARD SPEC'S DATED 5-25-62 ON FILE WITH THE COUNTY AND SHALL BE PROTECTED ONLY IN THE PRESENCE OF THE COUNTY ENGINEER. BEFORE WORK CAN BE STARTED THE CONTRACTOR MUST OBTAIN A PERMIT TO EXCAVATE IN COUNTY STREETS FROM THE L.A. COUNTY ROAD DEPT., DISTRICT OFFICE NO. 1, AND PAY A FEE TO WITH THE COUNTY ENGINEER, ROOM 380, COUNTY ENGINEER BLDG., GOVENDILLA OF THE SAN DIMAS REGIONAL OFFICE, SUFFICIENT TO COVER THE COST OF CONSTRUCTION INSPECTION AND RECORD PLANS. APPROVAL OF THIS PLAN BY THE COUNTY OF LOS ANGELES DOES NOT CONSTITUTE A REPRESENTATION AS TO THE ACCURACY OF THE LOCATION OF OR THE EXISTENCE OR NON-EXISTENCE OF ANY UNDERGROUND UTILITY PIPE, OR STRUCTURE WITHIN THE LIMITS OF THIS PROJECT. THIS NOTE APPLIES TO ALL PAGES. IF WORK IS TO BE DONE IN A STATE HIGHWAY, A PERMIT MUST BE OBTAINED FROM THE STATE OF CALIFORNIA, DIVISION OF HIGHWAYS, 120 SOUTH SPRING STREET.

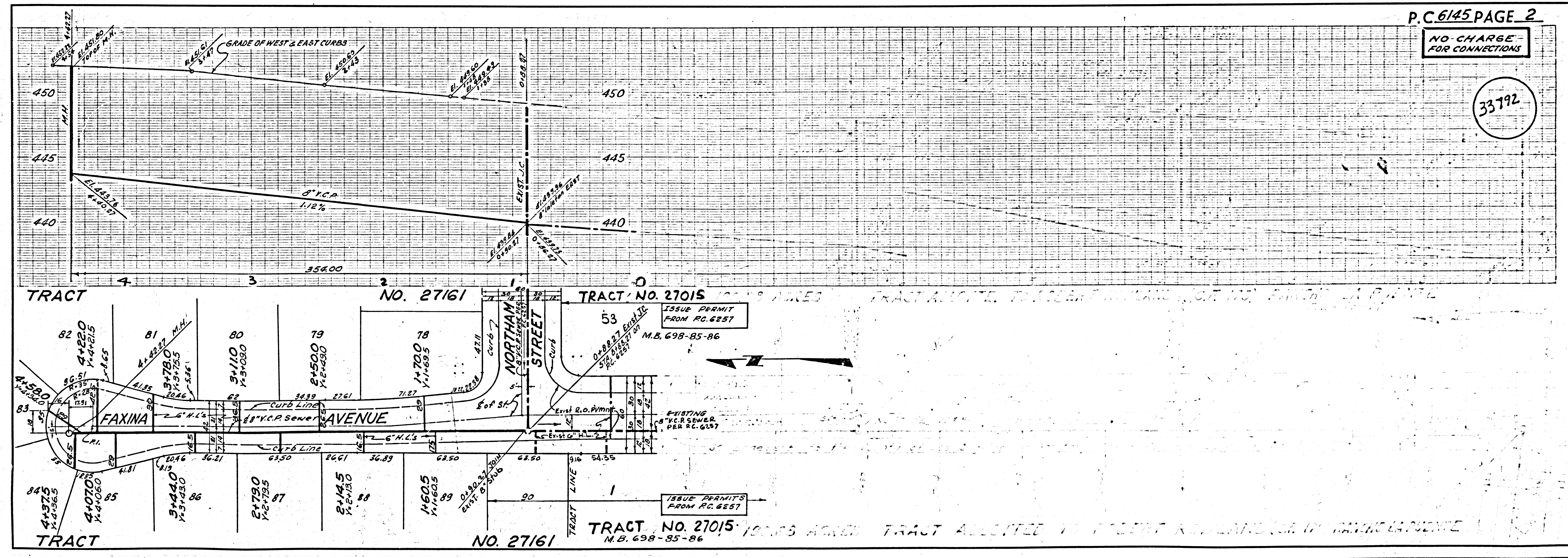
COUNTY OF LOS ANGELES, CALIFORNIA

APPROVED, JOHN A. LAMBIE, COUNTY ENGINEER APPROVED, J.D. PARNHURST, CHIEF ENGINEER CO. SAN. DIST. NO. 21

BY: *John E. Kline* ASST. SANITATION ENGINEER BY: *E.P. Brooks* CHIEF ENGINEER

CHECKED BY: *St. Wade* 6-12-63 OFFICE OF COUNTY ENGINEER, REG. C. E. NO. 3406

SUBMITTED: *Bob Wooding* 6-11-63 SAN DIMAS REGIONAL OFFICE R.C.E. N° 71636



NO CHARGE FOR CONNECTIONS

33792

ISSUE PERMIT FROM RC. 6257

ISSUE PERMITS FROM RC. 6257

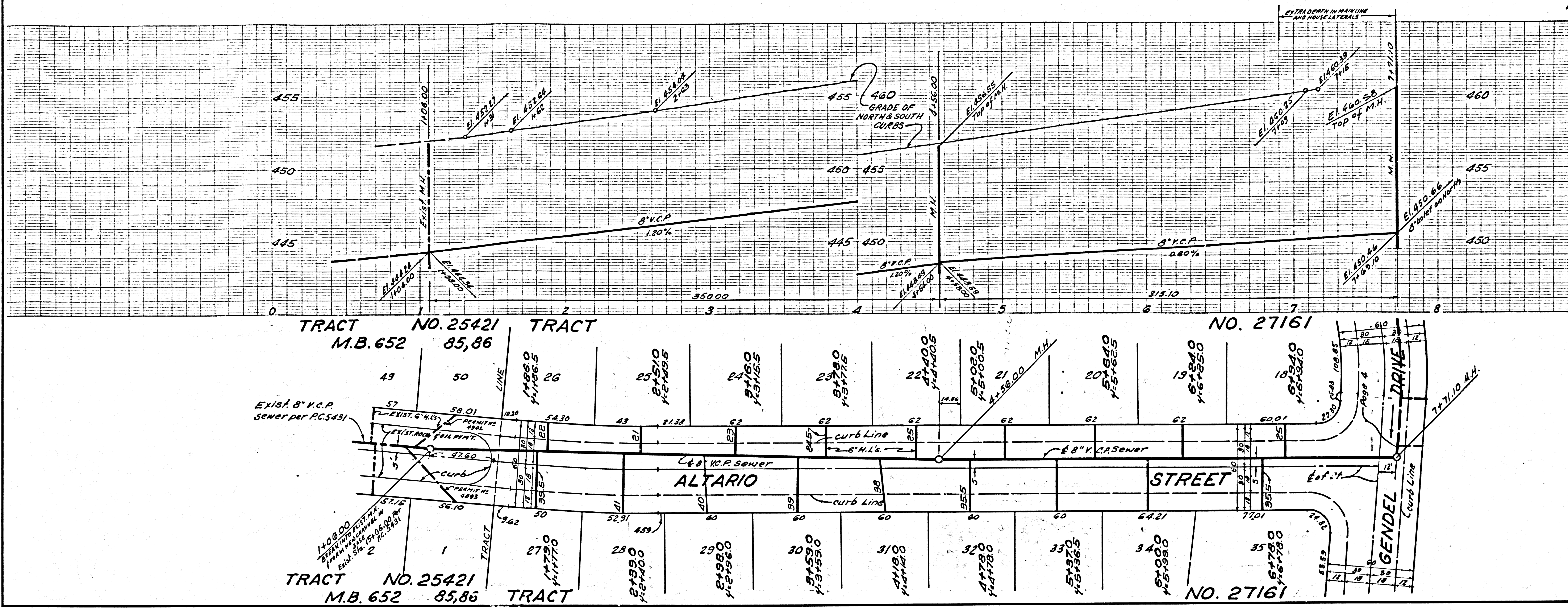
TRACT NO. 27015 19685 AGED TRACT ALLOCATED TO PUBLIC ROAD AND USE IN SANITATION DISTRICT M.B. 698-85-86

TRACT ALLOCATED TO PUBLIC ROAD AND USE IN SANITATION DISTRICT

TRACT ALLOCATED TO PUBLIC ROAD AND USE IN SANITATION DISTRICT

NO CHARGE FOR CONNECTIONS

33743



NO CHARGE FOR CONNECTIONS

33744

