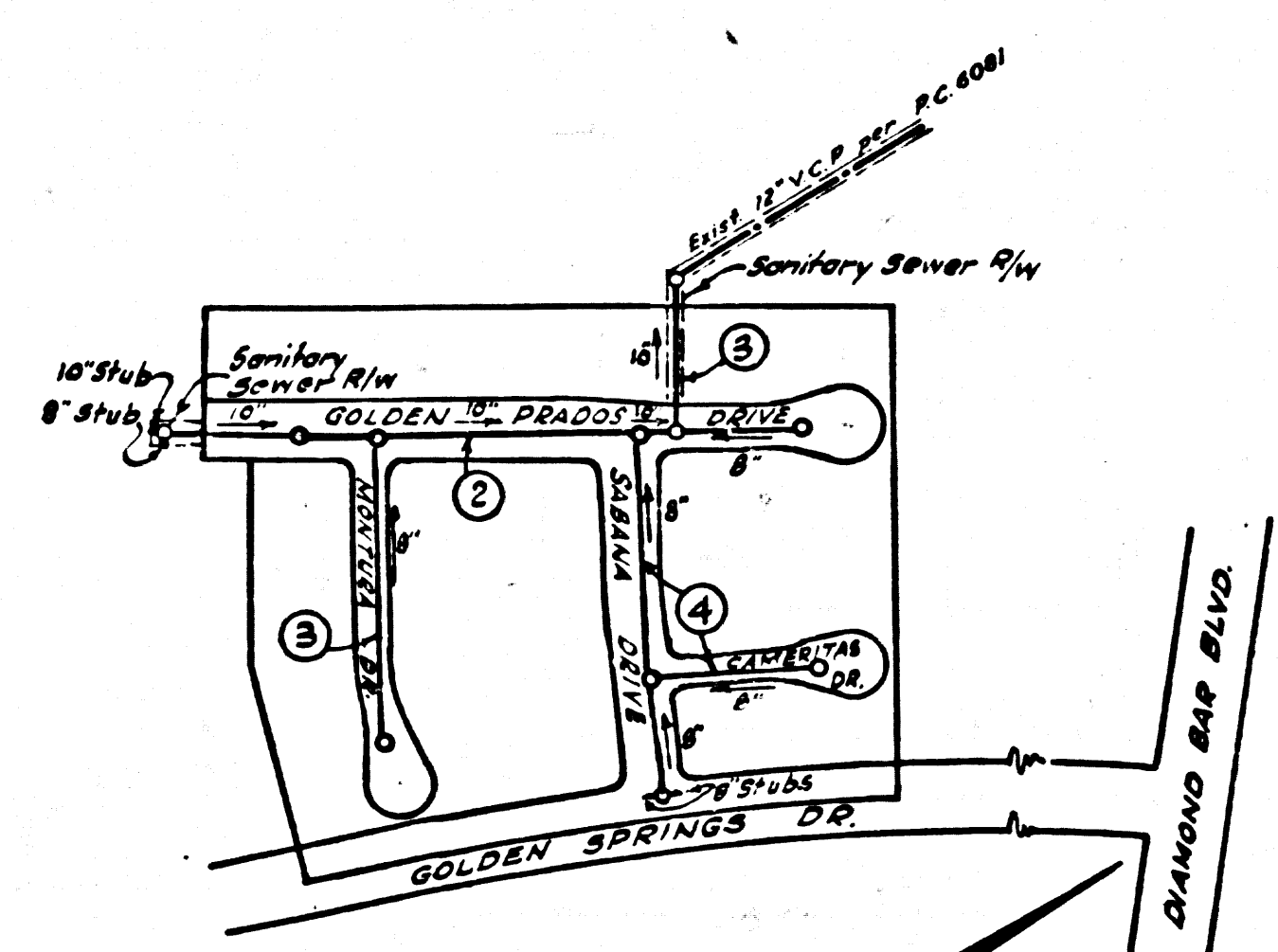


BENCH MARK

A standard County Surveyor Monument set in concrete 10" below the surface marked "B.M. 11-31, 1952 P.E. 63". Located 8.3' west of the west edge of Pomona Blvd. and 8.3' east of the east edge of Valley Blvd. in a wall protected by cast iron cover marked "County Surveyors Monument" F.B. 1376-82 1952 adjusted Elevation 684.191



**DOUBLE SCALE
SAN DIMAS BLDG. DIST. NO. 10**

PROFILE ALIGNMENT AND GRADE OF **P.C. 6146**
SANITARY SEWERS PAGE 1
TO BE CONSTRUCTED IN **JN 0357.70**
TRACT NO. 26203

PRIVATE CONTRACT NO. 6146

W.S. 39
2 SHEETS; 4 PAGES
SCALE: VERT. 1"=4'
HORIZ. 1"=40'
APRIL, 1962
PREPARED IN THE OFFICES OF
AMCO ENGINEERS
8844 W. OLYMPIC BLVD.
BEVERLY HILLS, CALIF. 90212
J. George Araujo REG. C. E. NO. 11467

32499

- 1. PROVIDE STAKES ON THE PROPERTY LINE OR PROPERTY LINES PRODUCED AT RIGHT ANGLES TO THE SEWER LINE AT THE CENTER LINE OF EACH MANHOLE.
- 2. NO REPRESENTATIVE OF THE COUNTY ENGINEER WILL SURVEY OR LAY OUT ANY PORTION OF THE WORK.
- 3. THE OWNER OR HIS AUTHORIZED REPRESENTATIVE SHALL FURNISH THE COUNTY ENGINEER WITH GRADE SHEETS AND STATIONING FOR ALL HOUSE LATERALS AND Y BRANCHES AND SHALL PROVIDE STAKES FOR THEM AT THEIR PROPER LOCATIONS WITH STATIONING PLAINLY MARKED. ANY CHANGE IN LOCATION SHALL BE REQUESTED IN WRITING BY THE OWNER OR HIS REPRESENTATIVE.
- 4. THE PRIVATE ENGINEER SHALL FURNISH THE HOUSE LATERAL DEPTH AT THE PROPERTY LINE BELOW THE TOP OF CURB ELEVATION FOR EACH HOUSE LATERAL ON THE GRADE SHEET.
- 5. NO REVISIONS SHALL BE MADE IN THESE PLANS WITHOUT THE APPROVAL OF THE COUNTY ENGINEER.
- 6. USE STANDARD MANHOLE FRAMES AND COVERS, S-117.
- 7. USE EXTRA STRENGTH PIPE ALL PIPE STANDARD DEPTH EXCEPT AS NOTED.
- 8. USE CEMENT MORTAR OR "WEDGE-LOCK" OR "SPEED-SEAL" FOR ALL V.C.P. JOINTS PER SPECS., SECS. 34 & 48.
- 9. RESURFACE ALL TRENCH WITHIN PAVED AREA TO MEET L.A. COUNTY ROAD DEPT. OR CALIF. STATE HIGHWAY REQUIREMENTS IN ACCORDANCE WITH PERMITS.
- 10. ENCASE FOUR FEET OF SEWER AT POINTS OF INTERFERENCE WITH POLES, CASE III, S-172.
- 11. HOUSE LATERALS TO BE CONSTRUCTED WITH INVERTS AT PROPERTY LINE 6 FEET BELOW CURB GRADE.
- 12. MANHOLES SHALL BE BRICK SEWER STRUCTURES PER S-8-104. PRECAST CONCRETE MANHOLES PER S-8-185 OR S-8-178 MAY BE USED AS AN ALTERNATE IN LOCATIONS APPROVED BY THE COUNTY ENGINEER.
- 13. FOR ALLOWABLE LEAKAGE TEST USE FORMULA NO. 1 SPEC., SEC. 54.
- 14. MANHOLE TOPS IN UNIMPROVED RIGHTS-OF-WAY TO BE SIX INCHES ABOVE FINISHED GRADE.
- 15. THE CONTRACTOR SHALL NOTIFY THE CONSTRUCTION & STORM DRAIN DIVISION BY TELEPHONE, MADISON 8-4741, EX. 15541 AT LEAST TWENTY-FOUR HOURS BEFORE STARTING ANY WORK UNDER THIS CONTRACT.
- 16. STANDARD SPECIFICATIONS DATED OCTOBER 26, 1961, SHALL APPLY IN THE CONSTRUCTION OF THIS PROJECT.
- 17. SEWERS IN FILLED GROUND
 - a) NO CONSTRUCTION WILL BE PERMITTED IN FILLED AREA UNLESS ACCEPTABLE CERTIFICATION IS SUBMITTED TO THE CONSTRUCTION DIVISION OF THE COUNTY ENGINEERS DEPARTMENT THAT RELATIVE COMPACTION IS GREATER THAN 90%.
 - b) IF COMPACTION IS LESS THAN 90% THE SEWER MUST BE CRADLED AS SHOWN IN THE PLANS PER S-8-186.
 - c) IF COMPACTION IS GREATER THAN 90% NEITHER CRADLING NOR SPECIAL MANHOLE BASES WILL BE REQUIRED HOWEVER JOINT COMPOUND OR "WEDGE-LOCK" OR "SPEED SEAL" MUST BE SUBSTITUTED FOR CEMENT MORTAR FOR ALL JOINTS IN FILLED AREAS.
- 18. ALL FILL TO BE IN PLACE BEFORE SEWER IS CONSTRUCTED.

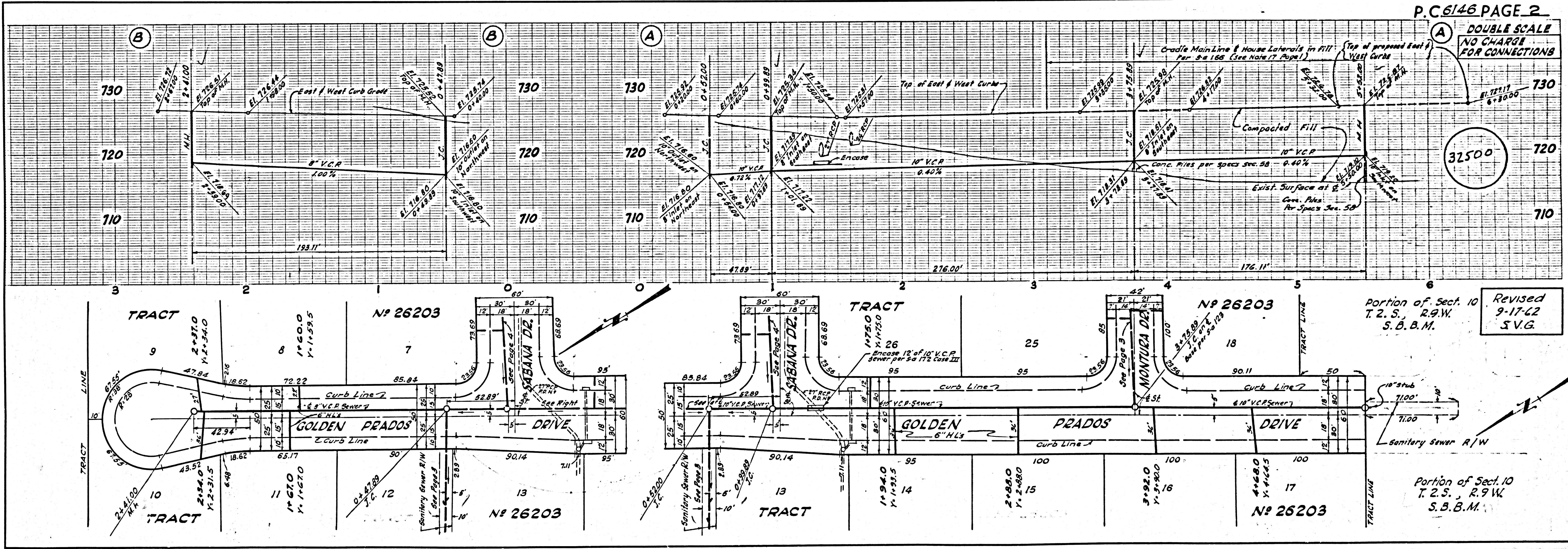
NO CONNECTIONS FOR THE DISPOSAL OF INDUSTRIAL WASTES SHALL BE MADE TO SEWERS SHOWN ON THESE DRAWINGS. NO CHARGE FOR CONNECTIONS A.R. 02-5115/62

NOTE
ISSUE NO PERMITS UNTIL OUTLET SEWER IS CONSTRUCTED AND TRACT NO. 26203 IS RECORDED.

NOTE:
GRADES TO WHICH THIS IMPROVEMENT IS TO BE CONSTRUCTED ARE SHOWN ON PLANS AND PROFILES. GRADE POINTS FOR TOP OF CURBS, CENTER LINE OF STREETS, OR CENTER LINE OF ALLEYS ARE SHOWN BY CIRCLES ON PROFILES AT ALL POINTS BETWEEN DESIGNATED POINTS THE GRADE SHALL BE ESTABLISHED SO AS TO CONFORM TO A STRAIGHT LINE DRAWN BETWEEN SAID DESIGNATED POINTS.
ELEVATIONS ARE IN FEET ABOVE U.S.C. & G.S. SEA LEVEL DATUM OF 1929.
THIS DRAWING AND THE DATA HEREON ARE HEREBY MADE A PART OF THE SPECIFICATIONS ON FILE IN THE OFFICE OF THE COUNTY ENGINEER AND SHALL BE PROSECUTED ONLY IN THE PRESENCE OF THE COUNTY ENGINEER.
BEFORE WORK CAN BE STARTED, THE CONTRACTOR MUST OBTAIN A PERMIT TO EXCAVATE IN COUNTY STREETS FROM THE L.A. COUNTY ROAD DEPT., DISTRICT OFFICE NO. 7, AND PAY A FEE TO THE COUNTY ENGINEER, ROOM 310 L.A. CO. BLDG., 108 W. END STREET, SUFFICIENT TO COVER THE COST OF CONSTRUCTION INSPECTION AND RECORD PLANS.
APPROVAL OF THIS PLAN BY THE COUNTY OF LOS ANGELES DOES NOT CONSTITUTE A REPRESENTATION AS TO THE ACCURACY OF THE LOCATION OF OR THE EXISTENCE OR NON-EXISTENCE OF ANY UNDERGROUND UTILITY PIPE, OR STRUCTURE WITHIN THE LIMITS OF THIS PROJECT. THIS NOTE APPLIES TO ALL PAGES.
IF WORK IS TO BE DONE IN A STATE HIGHWAY, A PERMIT MUST BE OBTAINED FROM THE STATE OF CALIFORNIA, DIVISION OF HIGHWAYS, 128 SOUTH SPRING STREET.

COUNTY OF LOS ANGELES, CALIFORNIA
APPROVED, JOHN A. LAMBE, COUNTY ENGINEER APPROVED, J.D. PARKHURST, CHIEF ENGINEER
ASST. SANITATION ENGINEER OFFICE ENGINEER
CHECKED BY: 5/15/62
OFFICE OF COUNTY ENGINEER, REG. C. E. NO. 2446

SUBMITTED W.C. Reinhardt 5-13-62
SAN DIMAS REGIONAL OFFICE



P.C. 6146 PAGE 2

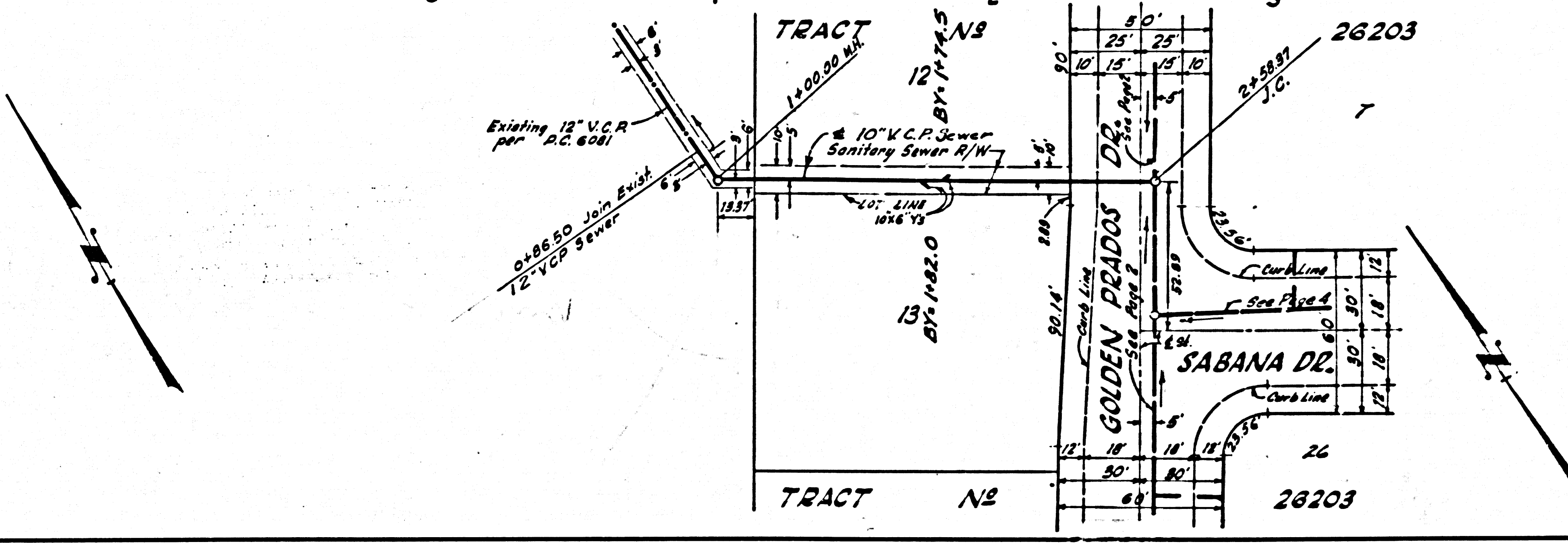
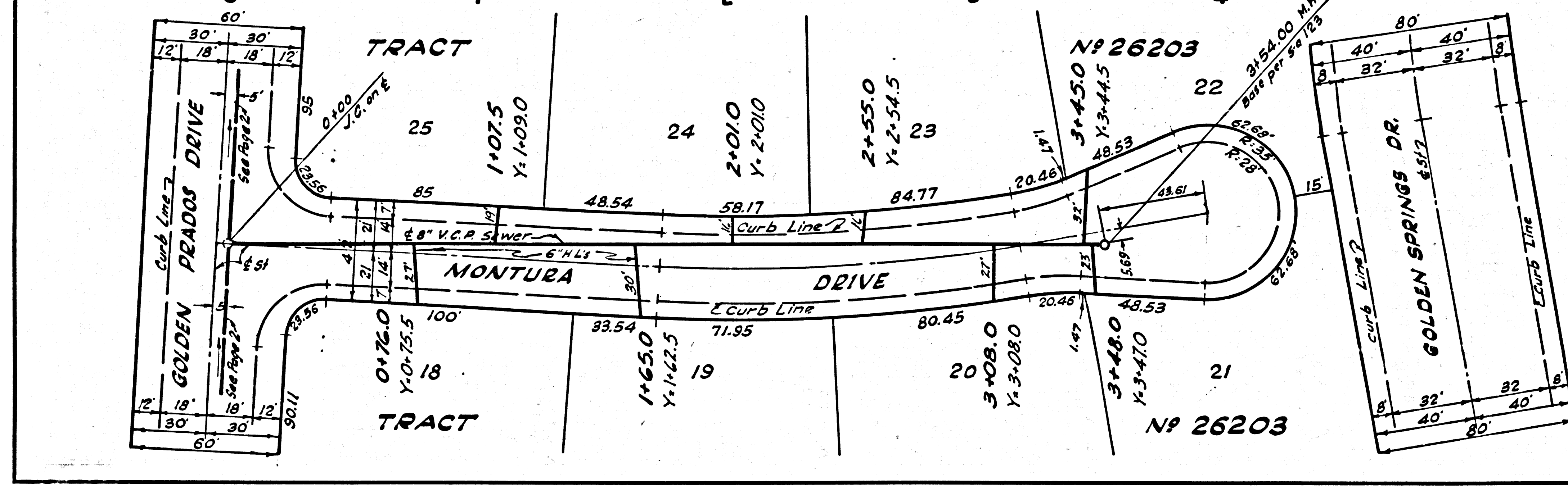
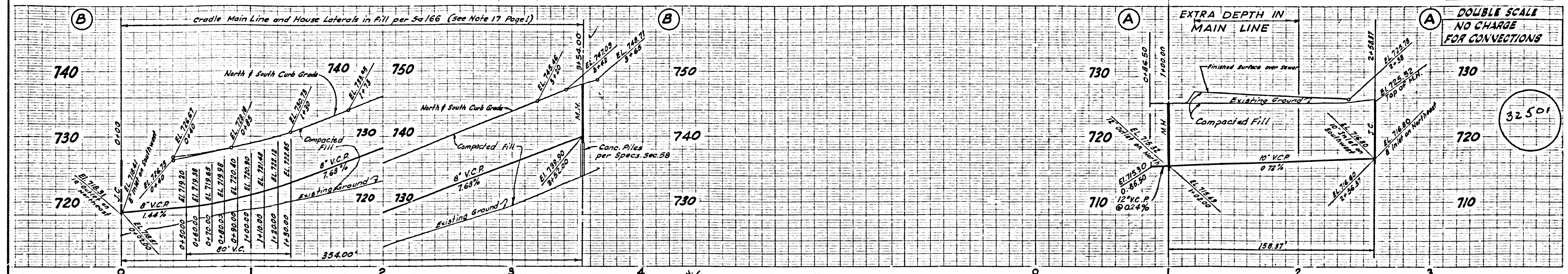
DOUBLE SCALE
NO CHARGE FOR CONNECTIONS

32500

Portion of Sect. 10 T. 2. S., R. 9. W. S.B.B.M. Revised 9-17-62 S.V.G.

Portion of Sect. 10 T. 2. S., R. 9. W. S.B.B.M.

DOUBLE SCALE
NO CHARGE
FOR CONNECTIONS



DOUBLE SCALE
NO CHARGE
FOR CONNECTIONS

