

PUENTE BLDG. DIST. NO. 2

PROFILE ALIGNMENT AND GRADE OF  
**SANITARY SEWERS** P.C. 6148  
 TO BE CONSTRUCTED IN PAGE 1  
 TRACT No 26762 J.N. 0357.72

PRIVATE CONTRACT NO. 6148

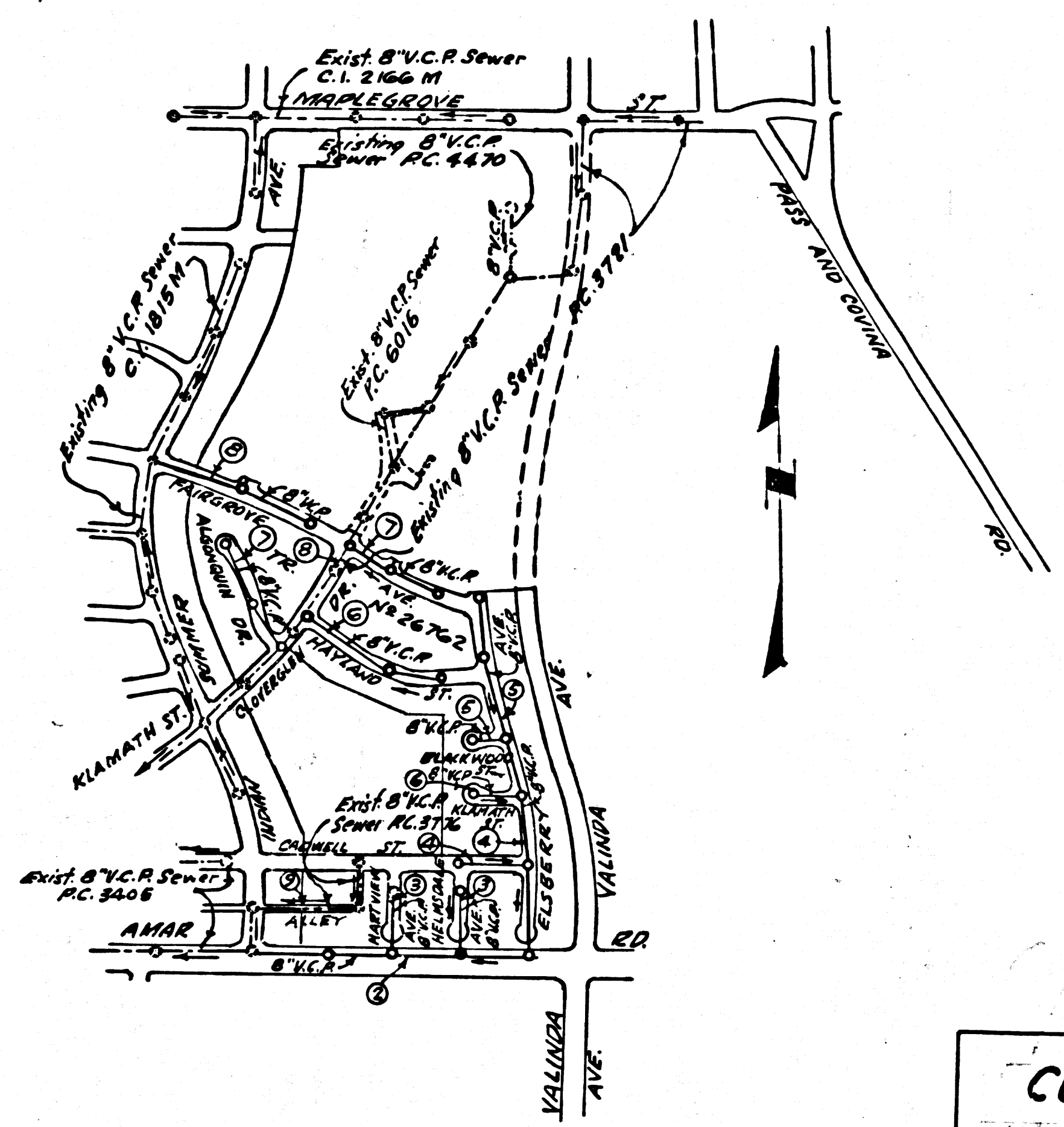
W.S. 38  
 5 SHEETS; 9 PAGES

SCALE: VERT. 1"=4' HORIZ. 1"=40' MARCH, 1962

PREPARED IN THE OFFICES OF  
**HAROLD L. JOHNSON ENGINEERING INC.**

By: *Harold L. Johnson*  
 REG. C. E. NO. 7664  
 FOR LEGEND SEE PLAN NO. S-A-64

32248



INDEX MAP  
 TRACT No 26762  
 SCALE 1"=600'  
 P.C. 6148

NOTE: NUMBERS IN CIRCLES INDICATE PAGE NUMBERS.

COLLECT CHARGES  
 AS INDICATED  
*Harold L. Johnson 4/24/62*

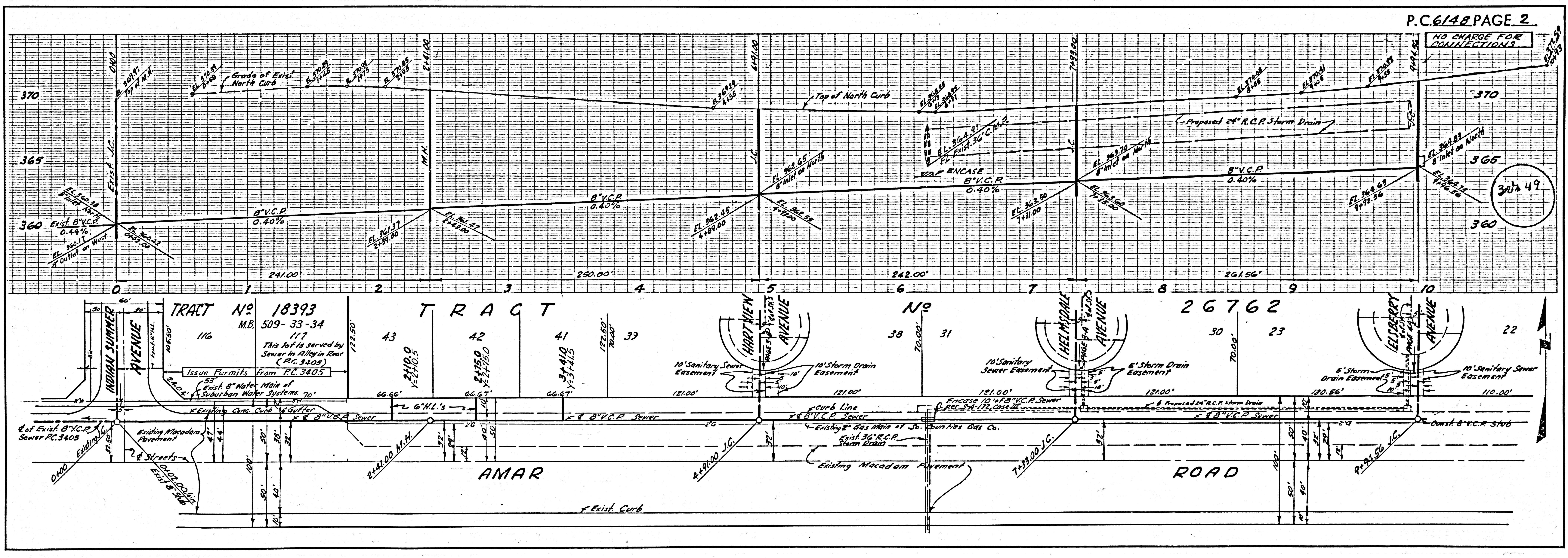
B.M. 37-4 Elev. 426.91  
 C.S. Man. in Hand Hole at center-line intersection of Pass and Covina Road and Amar Road, Stamped C.S. Man. R.E. 2177 (adj. 1954)

- NOTES:
1. PROVIDE STAKES ON THE PROPERTY LINE OR PROPERTY LINES PRODUCED AT RIGHT ANGLES TO THE SEWER LINE AT THE CENTER LINE OF EACH MANHOLE.
  2. NO REPRESENTATIVE OF THE COUNTY ENGINEER WILL SURVEY OR LAY OUT ANY PORTION OF THE WORK.
  3. THE OWNER OR HIS AUTHORIZED REPRESENTATIVE SHALL FURNISH THE COUNTY ENGINEER WITH GRADE SHEETS AND STATIONING FOR ALL HOUSE LATERALS AND Y BRANCHES AND SHALL PROVIDE STAKES FOR THEM AT THEIR PROPER LOCATIONS WITH STATIONING PLAINLY MARKED. ANY CHANGE IN LOCATION SHALL BE REQUESTED IN WRITING BY THE OWNER OR HIS REPRESENTATIVE.
  4. THE PRIVATE ENGINEER SHALL FURNISH THE HOUSE LATERAL DEPTH AT THE PROPERTY LINE BELOW THE TOP OF CURB ELEVATION FOR EACH HOUSE LATERAL ON THE GRADE SHEET.
  5. NO REVISIONS SHALL BE MADE IN THESE PLANS WITHOUT THE APPROVAL OF THE COUNTY ENGINEER.
  6. USE STANDARD MANHOLE FRAMES AND COVERS, 2-0-17 1/2.
  7. USE EXTRA STRENGTH PIPE. ALL PIPE STANDARD DEPTH, EXCEPT AS NOTED.
  8. USE CEMENT MORTAR OR "WEDGE-LOCK" OR "SPEED-SEAL" FOR ALL V.C.P. JOINTS PER SPECS., SECS. 36 & 48.
  9. RESURFACE ALL TRENCH WITHIN PAVED AREA TO MEET L.A. COUNTY ROAD DEPT. OR CALIF. STATE HIGHWAY REQUIREMENTS IN ACCORDANCE WITH PERMITS.
  10. INCREASE FOUR FEET OF SEWER AT POINTS OF INTERFERENCE WITH POLES, CASE III, 2-0-17 1/2.
  11. HOUSE LATERALS TO BE CONSTRUCTED WITH INVERTS AT PROPERTY LINE. 6" FEET BELOW CURB GRADE OR GRADE OVER SEWER EXCEPT AS NOTED.
  12. ALL STRUCTURES SHALL BE BRICK STRUCTURES UNLESS PRECAST CONCRETE MANHOLES PER SPECS. 38-0-15 OR S.A. 175 MAY BE USED AS AN ALTERNATE IN LOCATIONS, APPROVED BY THE COUNTY ENGINEER.
  13. FOR ALLOWABLE LEAKAGE TEST USE FORMULA NO. 1, SPECS., SEC. 54.
  14. MANHOLE TOPS IN UNIMPROVED HIGHWAYS TO BE SIX INCHES ABOVE FINISHED GRADE.
  15. THE CONTRACTOR SHALL NOTIFY THE CONSTRUCTION DIVISION BY TELEPHONE, MADISON 9-070, EXT. 81251 AT LEAST TWENTY-FOUR HOURS BEFORE STARTING ANY WORK UNDER THIS CONTRACT.
  16. STANDARD SPECIFICATIONS DATED OCT. 25, 1961 SHALL APPLY IN THE CONSTRUCTION OF THIS PROJECT.

NOTE:  
 GRADES TO WHICH THIS IMPROVEMENT IS TO BE CONSTRUCTED ARE SHOWN ON PLANS AND PROFILES. GRADE POINTS FOR TOP OF CURBS, CENTER LINE OF STREETS, OR CENTER LINE OF A LANE ARE SHOWN BY CIRCLES ON PROFILE. AT ALL POINTS BETWEEN DESIGNATED POINTS THE GRADE SHALL BE ESTABLISHED SO AS TO CONFORM TO A STRAIGHT LINE DRAWN BETWEEN SAID DESIGNATED POINTS.  
 ELEVATIONS ARE IN FEET ABOVE U.S.C. & G.S. SEA LEVEL DATUM OF 1929.  
 THIS DRAWING AND THE DATA HEREON ARE HEREBY MADE A PART OF THE SPECIFICATIONS.  
 WORK SHALL BE CONSTRUCTED ACCORDING TO SPECIFICATIONS ON FILE IN THE OFFICE OF THE COUNTY ENGINEER AND SHALL BE PROSECUTED ONLY IN THE PRESENCE OF THE COUNTY ENGINEER.  
 BEFORE WORK CAN BE STARTED, THE CONTRACTOR MUST OBTAIN A PERMIT TO EXCAVATE IN COUNTY STREETS FROM THE L.A. COUNTY ROAD DEPT., DISTRICT OFFICE NO. 7, AND PAY A FEE TO THE COUNTY ENGINEER, ROOM 340 COLLEGE BLDG., 200 W. 2ND ST., LOS ANGELES, SUFFICIENT TO COVER THE COST OF CONSTRUCTION INSPECTION AND RECORD PLANS.  
 APPROVAL OF THIS PLAN BY THE COUNTY OF LOS ANGELES DOES NOT CONSTITUTE A REPRESENTATION AS TO THE ACCURACY OF THE LOCATION OF OR THE EXISTENCE OR NON-EXISTENCE OF ANY UNDERGROUND UTILITY PIPE, OR STRUCTURE WITHIN THE LIMITS OF THIS PROJECT. THIS NOTE APPLIES TO ALL PAGES.  
 IF WORK IS TO BE DONE IN A STATE HIGHWAY, A PERMIT MUST BE OBTAINED FROM THE STATE OF CALIFORNIA, DIVISION OF HIGHWAYS, 120 SOUTH SPRING STREET.

COUNTY OF LOS ANGELES, CALIFORNIA  
 APPROVED, JOHN A. LAMBIE, COUNTY ENGINEER  
 APPROVED: *J.R. Parkhurst*, CHIEF ENGINEER  
 BY: *Harold L. Johnson*, ASST. SANITATION ENGINEER  
 BY: *Harold L. Johnson*, OFFICE ENGINEER  
 CHECKED BY: *W.C. Reinhardt*  
 OFFICE OF COUNTY ENGINEER, REG. C. E. NO. 29206  
 SUBMITTED: *W.C. Reinhardt 5-7-62*  
 SAN DIMAS REGIONAL ENGINEER

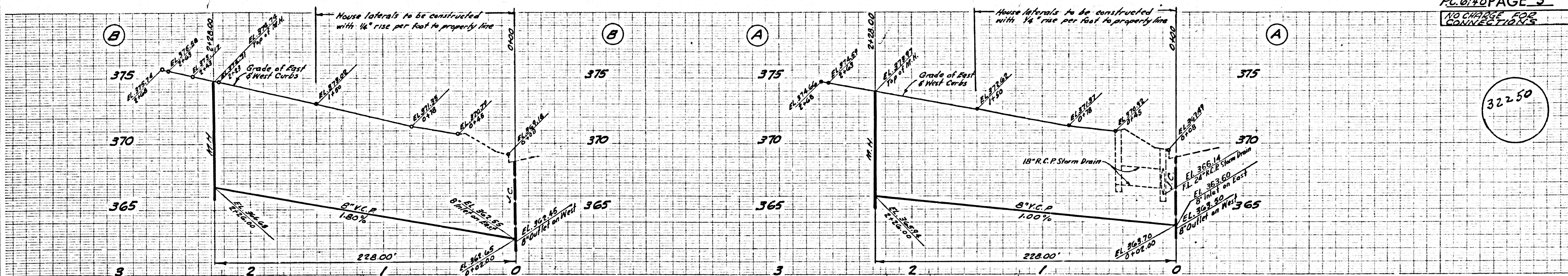
NO CONNECTIONS FOR THE DISPOSAL OF INDUSTRIAL WASTES SHALL BE MADE TO SEWERS SHOWN ON THESE DRAWINGS WITHOUT WRITTEN PERMISSION FROM THE CHIEF ENGINEER AND GENERAL MANAGER OF THE COUNTY SANITATION DISTRICTS.



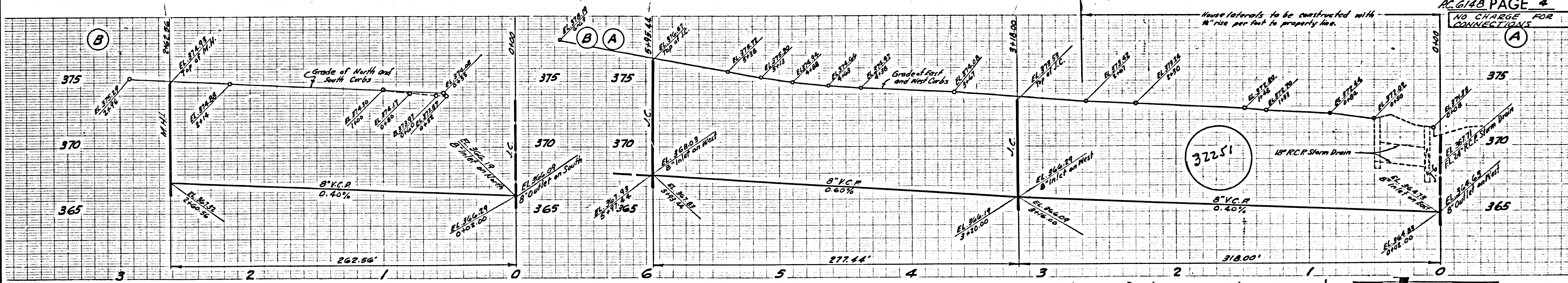
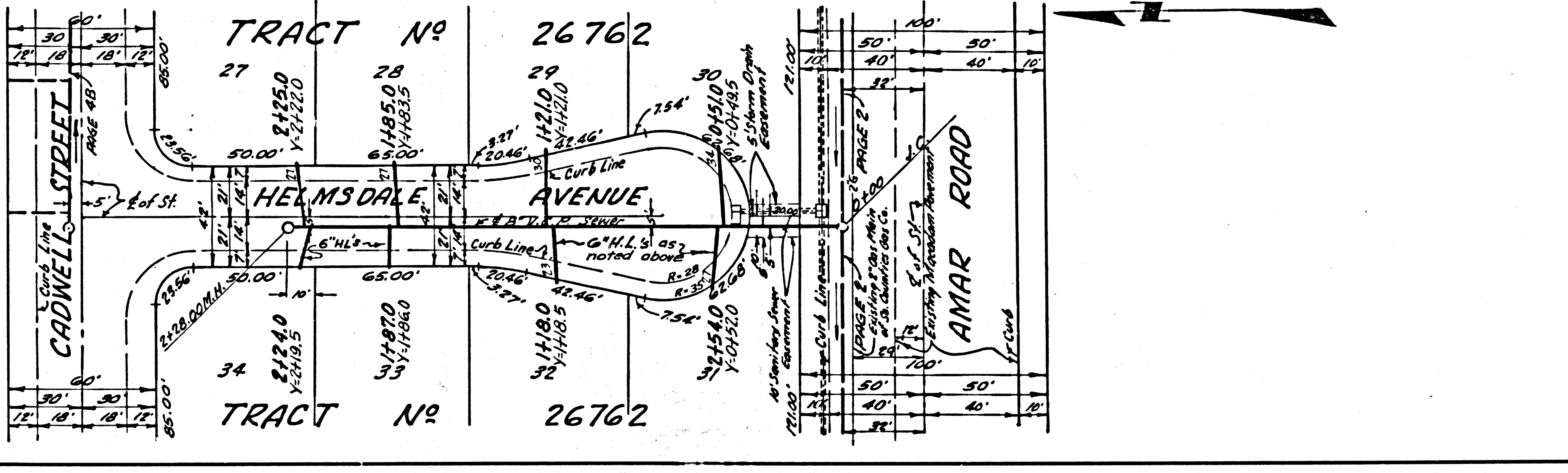
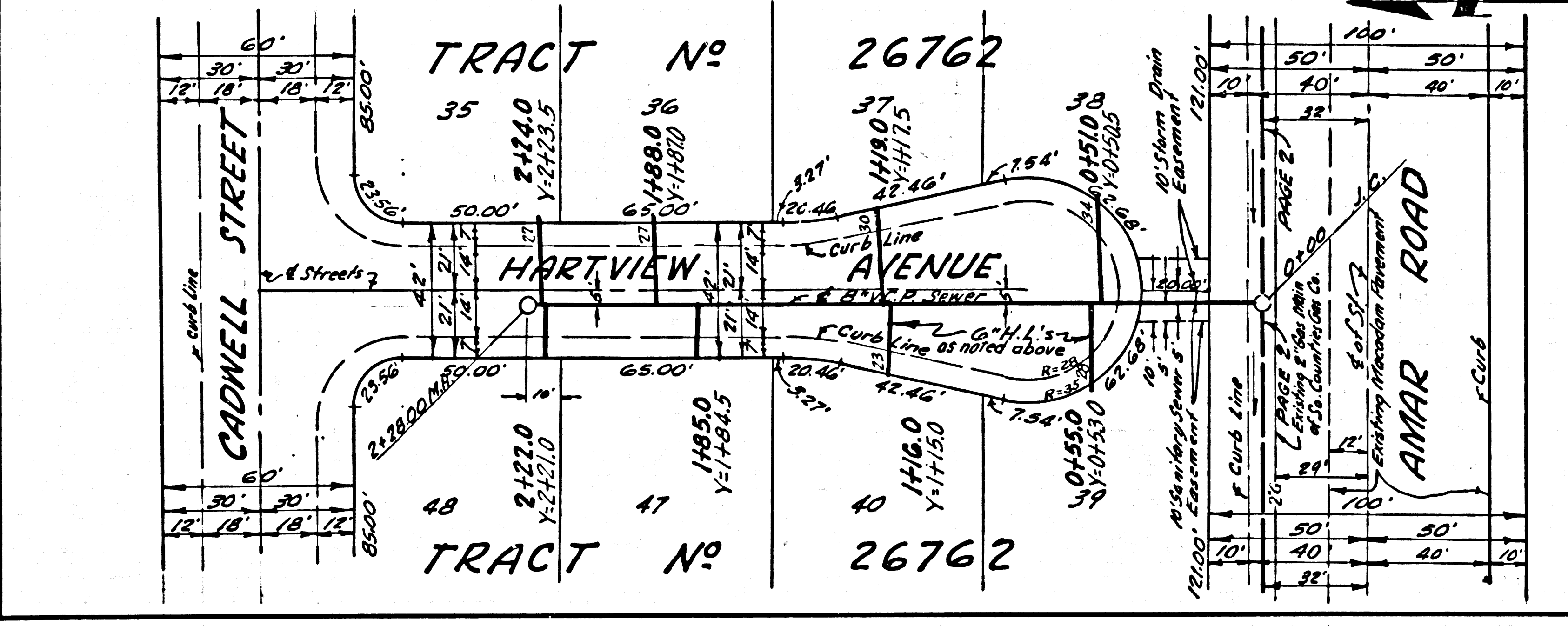
P.C. 6148 PAGE 2

NO CHARGE FOR CONNECTIONS

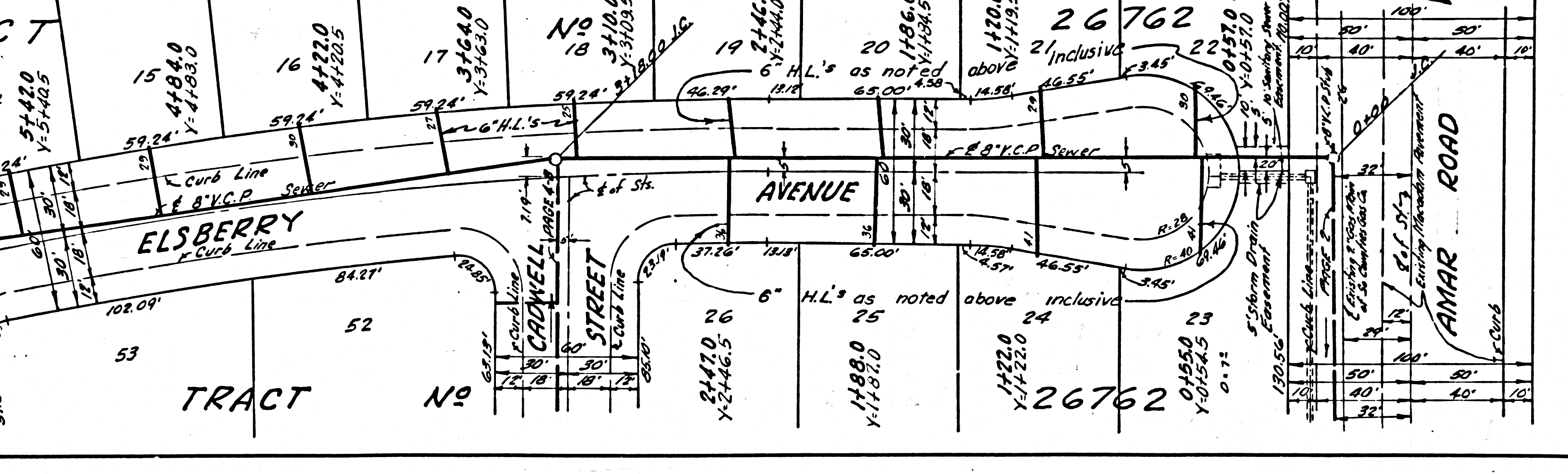
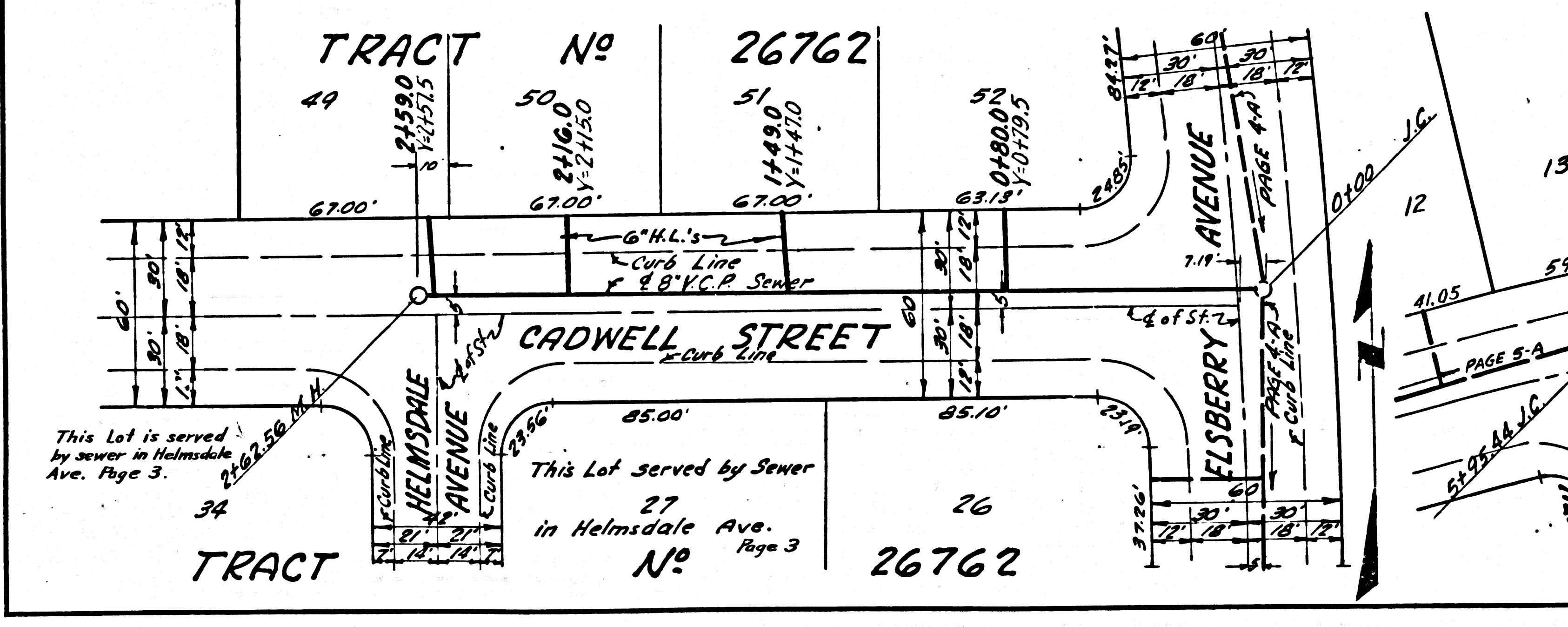
32249

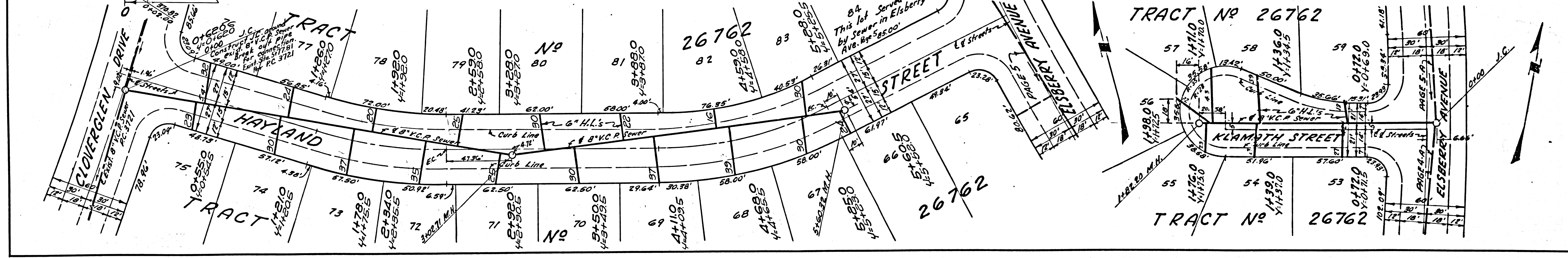
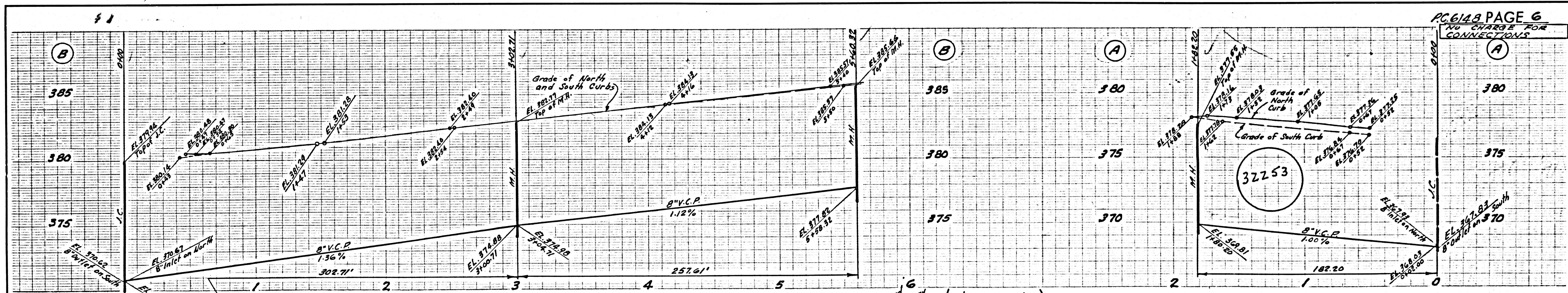
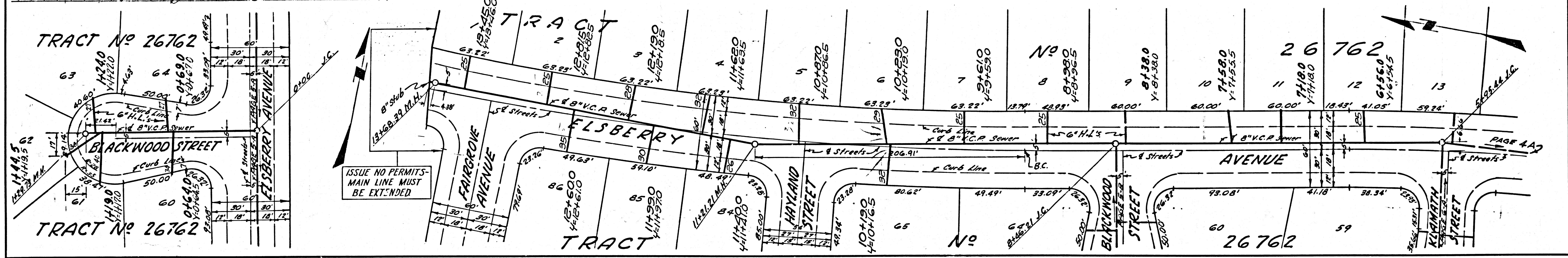
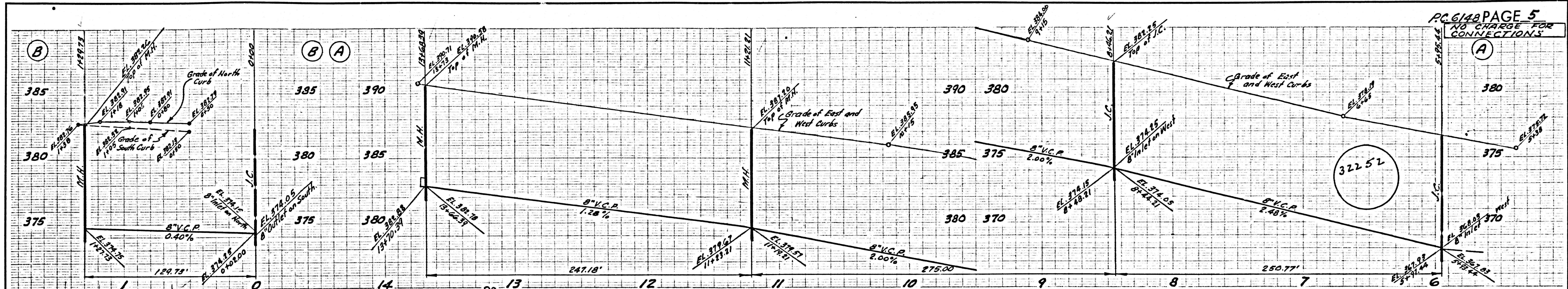


32250



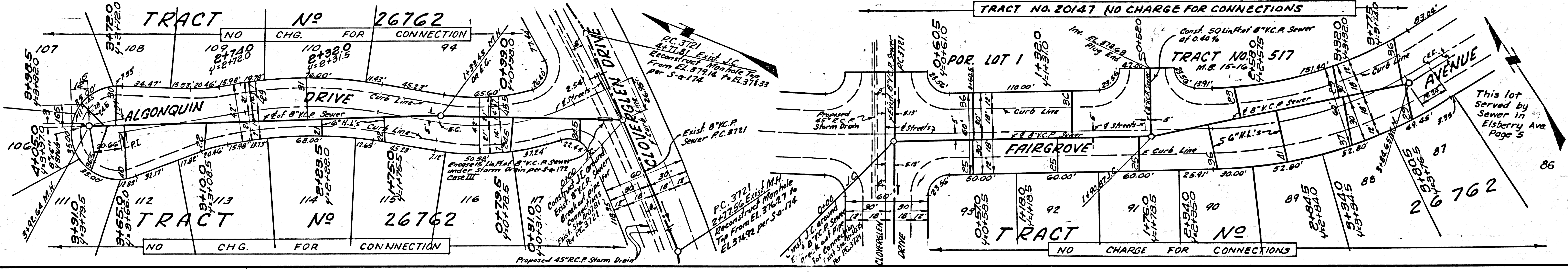
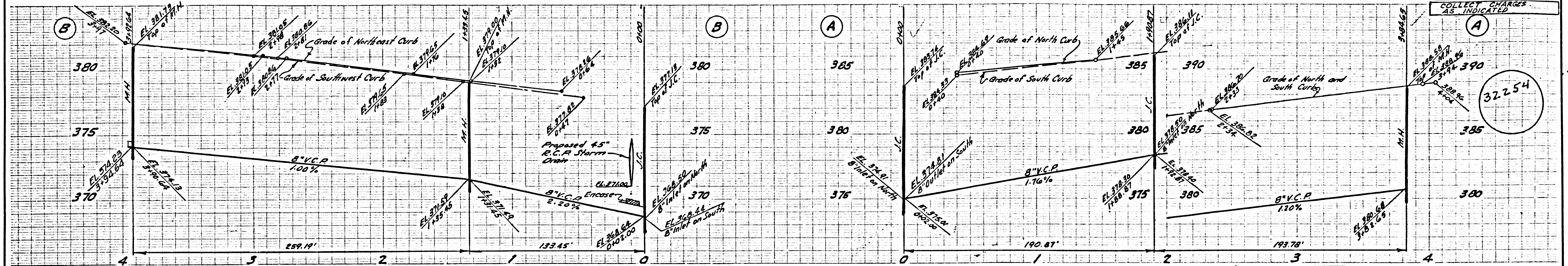
32251



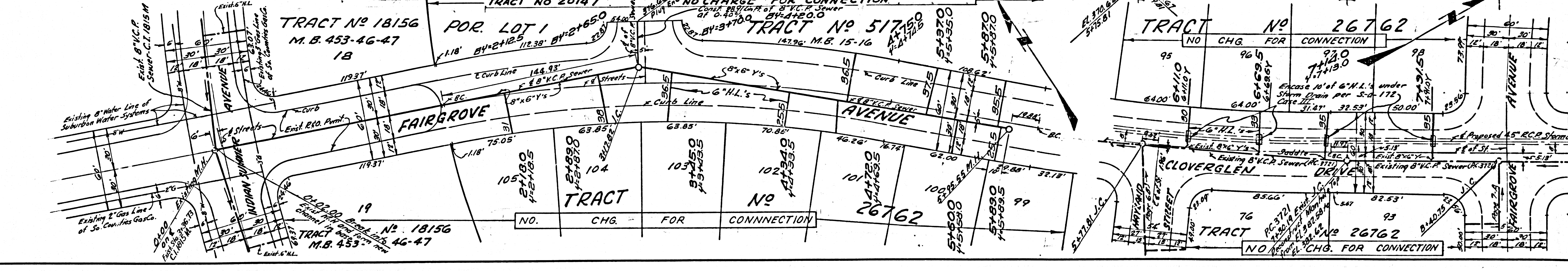
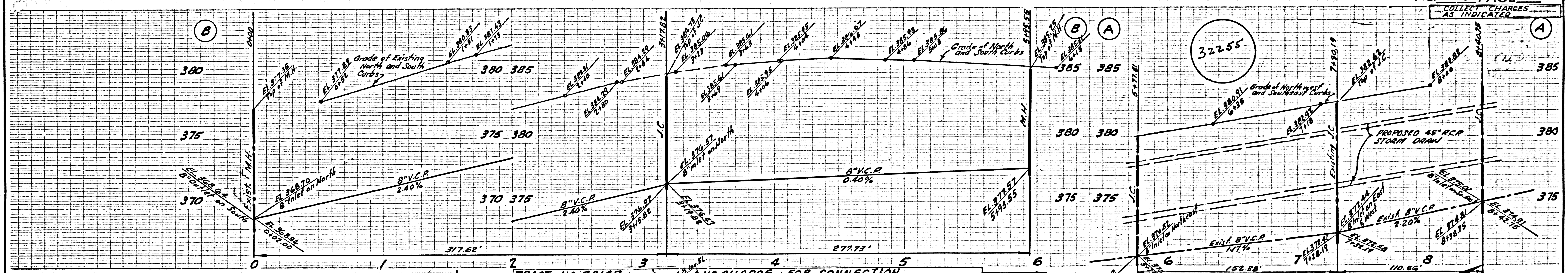


1000 110 5855

COLLECT CHARGES AS INDICATED



COLLECT CHARGES AS INDICATED



NO CHARGE FOR CONNECTIONS

32256

