

**DOUBLE SCALE  
LOMITA BLDG. DIST. NO. 12**

PROFILE ALIGNMENT AND GRADE OF **P.C. 6151**  
**SANITARY SEWERS PAGE 1**  
TO BE CONSTRUCTED IN **J.N. 0357.74**

**TRACT No 27113**

**PRIVATE CONTRACT NO. 6151**

W.S. 27

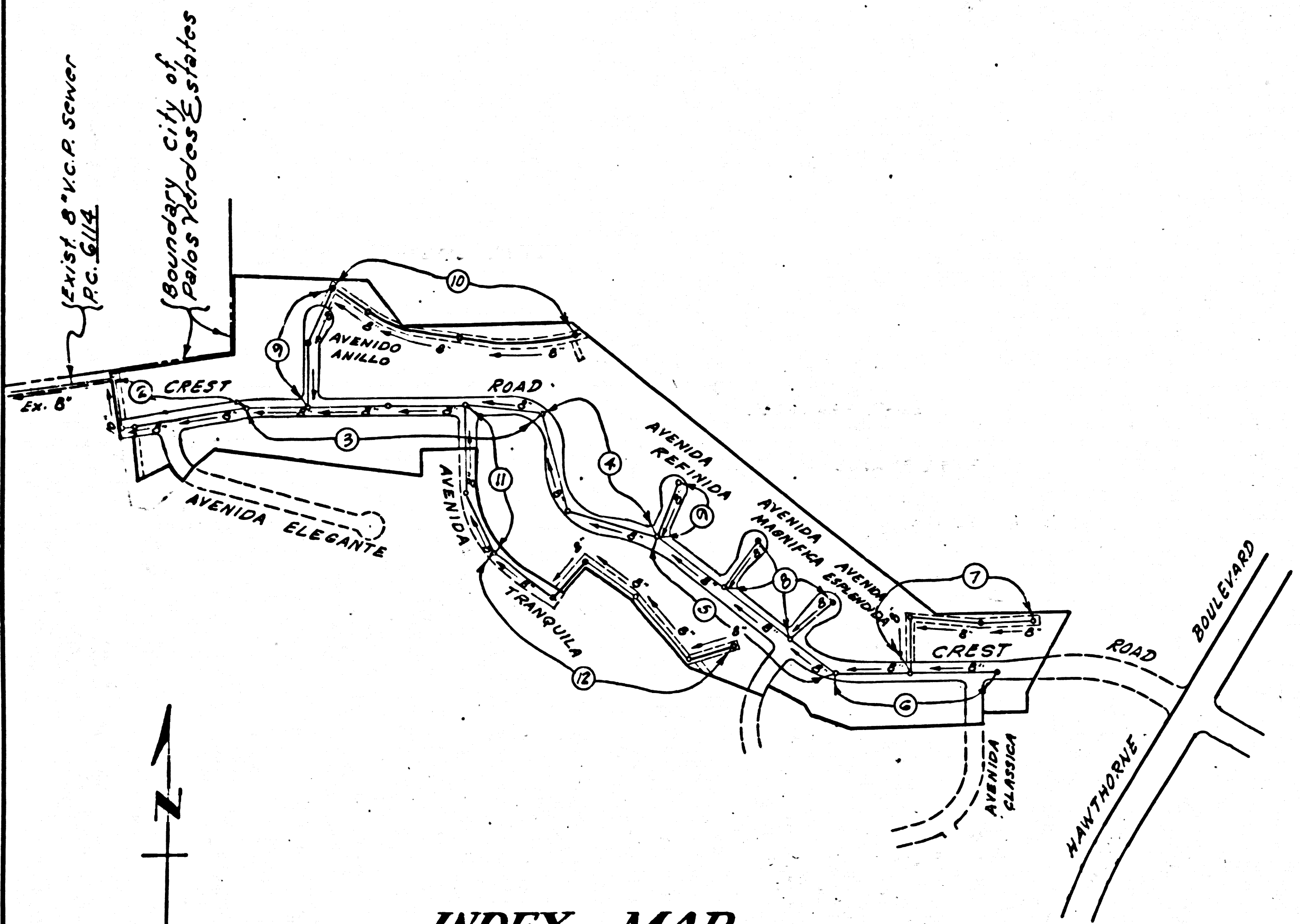
6 SHEETS; 12 PAGES

SCALE: VERT. 1"=8'  
HORIZ. 1"=40'

MARCH 1962  
PREPARED IN THE OFFICES OF  
Development Consultants, Inc.  
ENGINEERING DIVISION  
1001 B. Colorado Blvd., Pasadena, California  
By: *Smith & Skand*  
REG. C. E. NO. 2553

FOR LEGEND SEE PLAN NO. S-A-64

32450

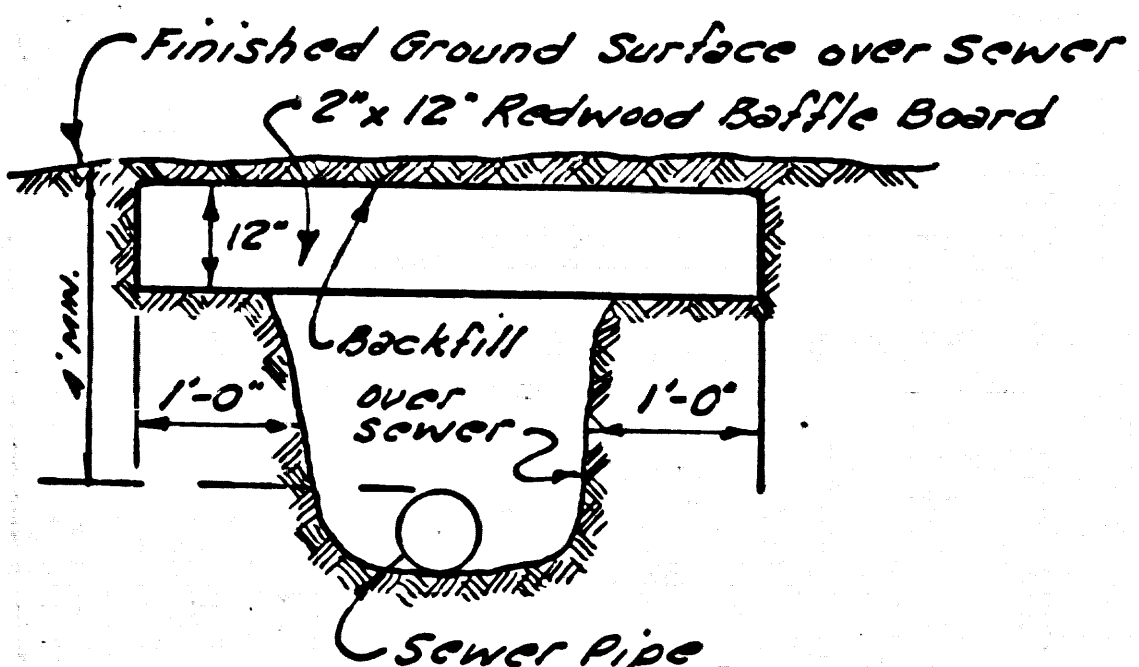


**INDEX MAP**  
**TRACT No 27113**

**P.C. - 6151**  
Scale: 1"=400'

B.M. SY4403 ELEV. = 886.106 1955 ADJ.  
HANTHORNE BLVD. 1.23 MILES  
EASTERLY OF PALOS VERDES  
DRIVE WEST.  
1/2 MI. W. & HANTHORNE BLVD.  
E.C. STA. 03+66.92  
SQ. HD SPK. IN M.C.

**2"x12" REDWOOD BAFFLE BOARD DETAIL**



1. Each end of baffle board will extend one foot into undisturbed ground.
2. Baffles will be so spaced that the top of the lower baffle shall be level with the bottom of the upper baffle board.
3. The upper layer of backfill to be 1 foot wide of top soil. Top soil shall be dumped in place and planted with mustard weed seed and adequately watered until growth is restored.

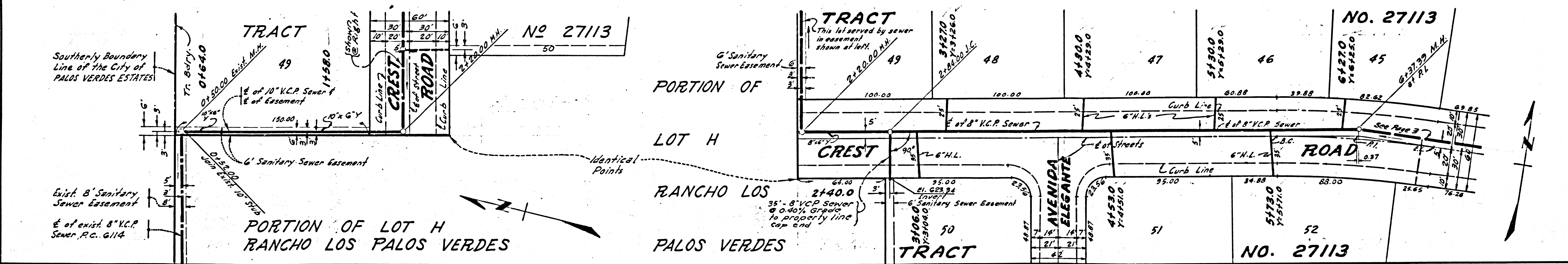
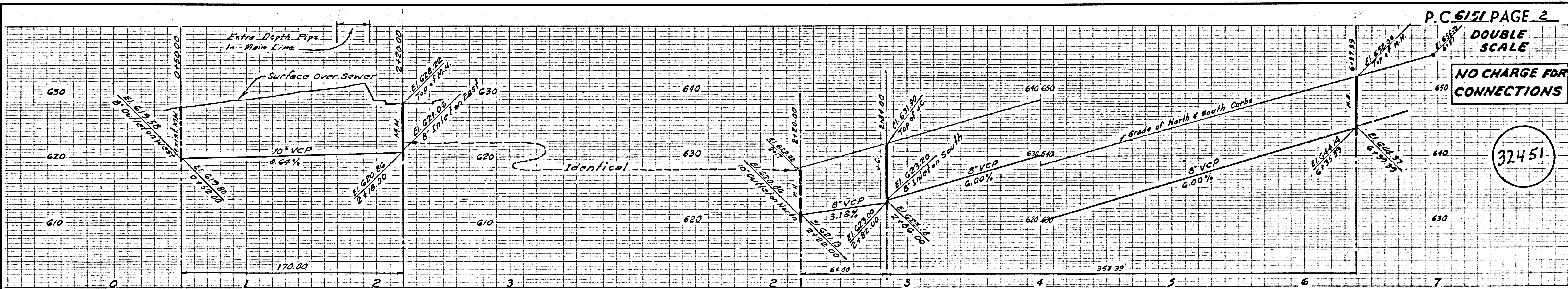
- NOTES:
1. PROVIDE STAKES ON THE PROPERTY LINE OR PROPERTY LINES PRODUCED AT RIGHT ANGLES TO THE SEWER LINE AT THE CENTER LINE OF EACH MANHOLE.
  2. NO REPRESENTATIVE OF THE COUNTY ENGINEER WILL SURVEY OR LAY OUT ANY PORTION OF THE WORK.
  3. THE OWNER OR HIS AUTHORIZED REPRESENTATIVE SHALL FURNISH THE COUNTY ENGINEER WITH GRADE SHEETS AND STATIONING FOR ALL HOUSE LATERALS AND Y BRANCHES AND SHALL PROVIDE STAKES FOR THEM AT THEIR PROPER LOCATIONS WITH STATIONING PLAINLY MARKED. ANY CHANGE IN LOCATION SHALL BE REQUESTED IN WRITING BY THE OWNER OR HIS REPRESENTATIVE.
  4. THE PRIVATE ENGINEER SHALL FURNISH THE HOUSE LATERAL DEPTH AT THE PROPERTY LINE BELOW THE TOP OF CURB ELEVATION FOR EACH HOUSE LATERAL ON THE GRADE SHEET.
  5. NO REVISIONS SHALL BE MADE IN THESE PLANS WITHOUT THE APPROVAL OF THE COUNTY ENGINEER.
  6. USE STANDARD MANHOLE FRAMES AND COVERS, S-117.
  7. USE EXTRA STRENGTH PIPE, ALL PIPE IS STANDARD DEPTH, EXCEPT AS NOTED.
  8. USE CEMENT MORTAR OR "WEDGE-LOCK" OR "SPEED-SEAL" FOR ALL V.C.P. JOINTS PER SPECS., SECS. 34 & 41.
  9. RESURFACE ALL TRENCH WITHIN PAVED AREA TO MEET L.A. COUNTY ROAD DEPT. OR CALIF. STATE HIGHWAY REQUIREMENTS IN ACCORDANCE WITH PERMITS.
  10. ENCASE FOUR FEET OF SEWER AT POINTS OF INTERFERENCE WITH POLES, CASE III, S-172.
  11. HOUSE LATERALS TO BE CONSTRUCTED WITH INVERTS AT PROPERTY LINE, 6 FEET BELOW CURB GRADE EXCEPT AS NOTED.
  12. ALL STRUCTURES SHALL BE BRICK SEWER STRUCTURES, S-104.
  13. FOR ALLOWABLE LEAKAGE TEST USE FORMULA NO. 7 SPEC., SEC. 54.
  14. MANHOLE TOPS IN UNIMPROVED RIGHTS-OF-WAY TO BE SIX INCHES ABOVE FINISHED GRADE.
  15. THE CONTRACTOR SHALL NOTIFY THE CONSTRUCTION DIVISION BY TELEPHONE, MADISON 9-4747, EXT. 81531 AT LEAST TWENTY-FOUR HOURS BEFORE STARTING ANY WORK UNDER THIS CONTRACT.
  16. STANDARD SPECIFICATIONS DATED OCTOBER 25, 1961 APPLY IN THE CONSTRUCTION OF THIS PROJECT.
  17. ALL HOUSE LATERALS OR MAIN LINE SEWERS CROSSING STORM DRAINS NOT OTHERWISE ENCASED SHALL BE ENCASED PER S-8-172, CASE II.
  18. a. NO CONSTRUCTION SHALL BE PERMITTED IN FILLED AREA UNLESS ACCEPTABLE CERTIFICATION IS SUBMITTED TO THE CONSTRUCTION DIVISION OF THE COUNTY ENGINEERS DEPARTMENT THAT RELATIVE COMPACTION IS GREATER THAN 80%.  
b. IF COMPACTION IS LESS THAN 90%, THE SEWER MUST BE CRADLED AS SHOWN ON THE PLANS PER S-8-166.  
c. IF COMPACTION IS GREATER THAN 90% CRADLING AND SPECIAL M.H. BASES ARE NOT REQUIRED, HOWEVER JOINT COMPOUND MUST BE SUBSTITUTED FOR CEMENT MORTAR IN ALL JOINTS IN FILLED AREAS.

**REVISED**  
**GRADE CHANGE:**  
FROM STA. 11+31.23 TO STA. 15+99.78  
*Edward J. Smith* 6-8-62

**NO CHARGE FOR CONNECTIONS**  
*L. Lister* 4-6-62

NO CONNECTIONS FOR THE DISPOSAL OF INDUSTRIAL WASTES SHALL BE MADE TO SEWERS SHOWN ON THESE DRAWINGS WITHOUT WRITTEN PERMISSION FROM THE CHIEF ENGINEER AND GENERAL MANAGER OF THE COUNTY SANITATION DISTRICTS.

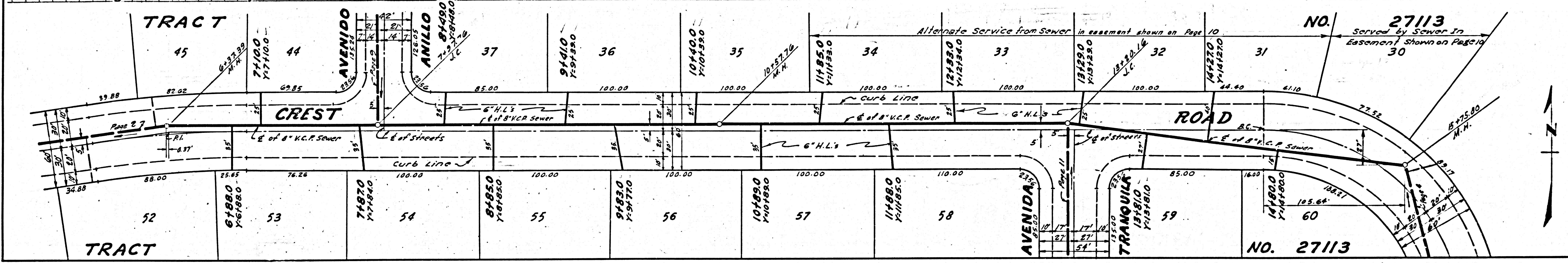
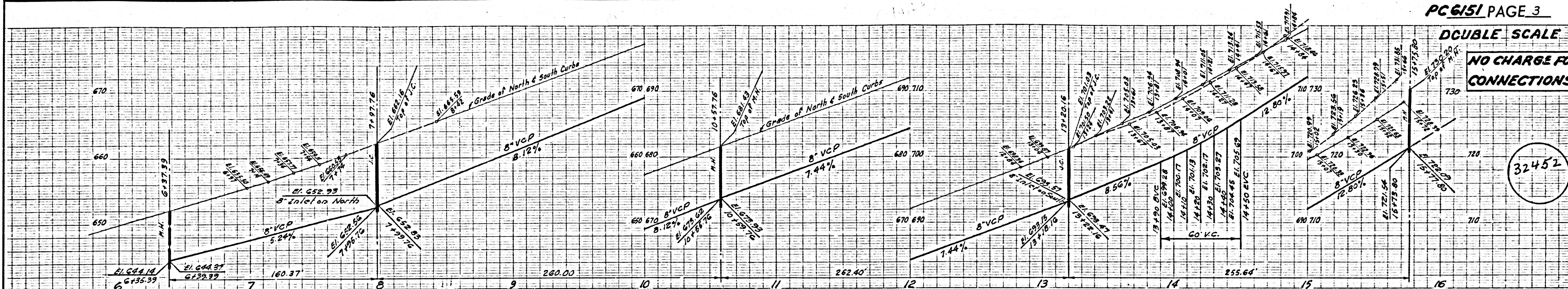
COUNTY OF LOS ANGELES, CALIFORNIA  
APPROVED, JOHN A. LAMBIE, COUNTY ENGINEER APPROVED, D.J. PARKINSON, CHIEF ENGINEER  
BY: *John E. Kline* ASS'T. SANITATION ENGINEER BY: *H. C. ...* OFFICE ENGINEER  
CHECKED BY: *St. ...* 4-25-62  
OFFICE OF COUNTY ENGINEER, REG. C. E. NO. 3166  
SUBMITTED BY: *Jack C. ...* PALOS VERDES-CENTINELA VALLEY REGIONAL ENGINEER





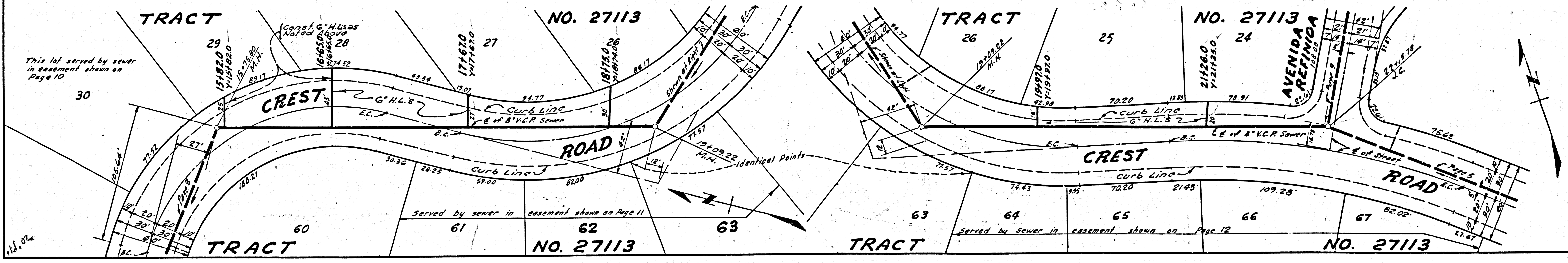
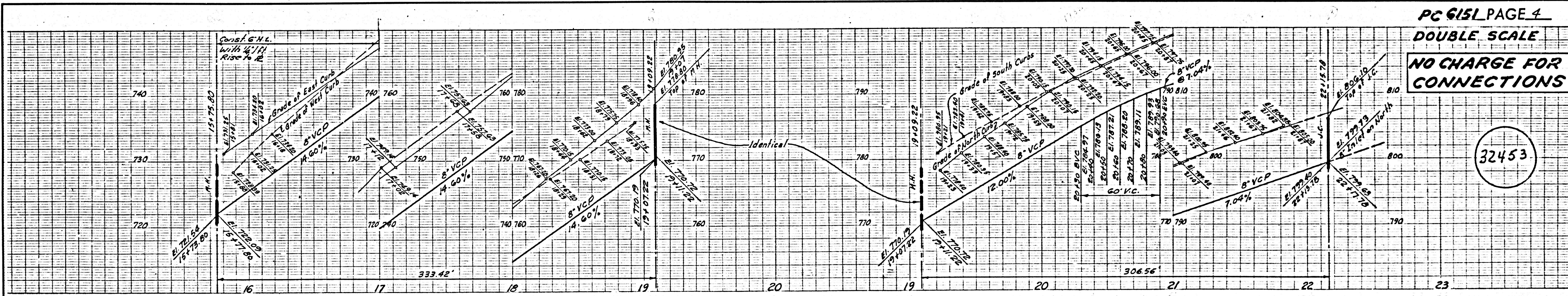
NO CHARGE FOR CONNECTIONS

32452



NO CHARGE FOR CONNECTIONS

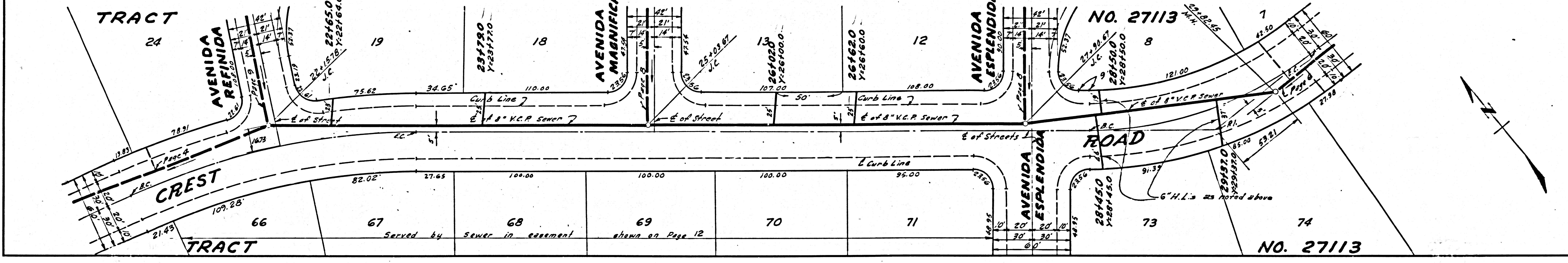
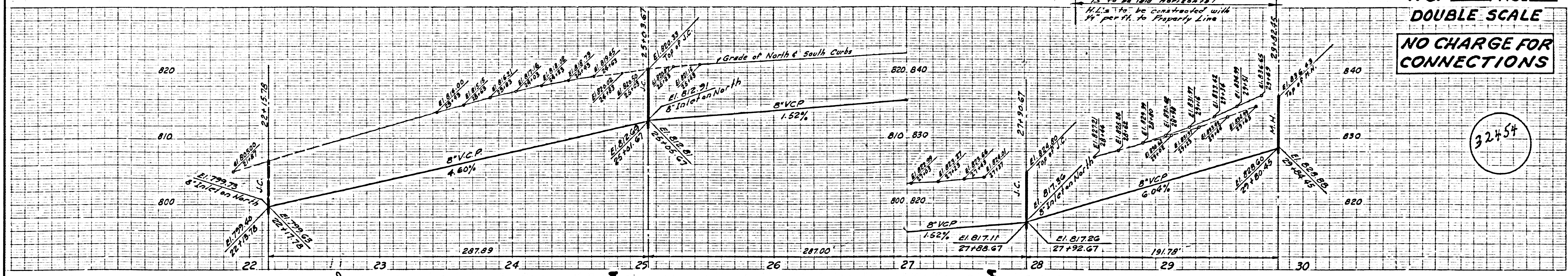
32453





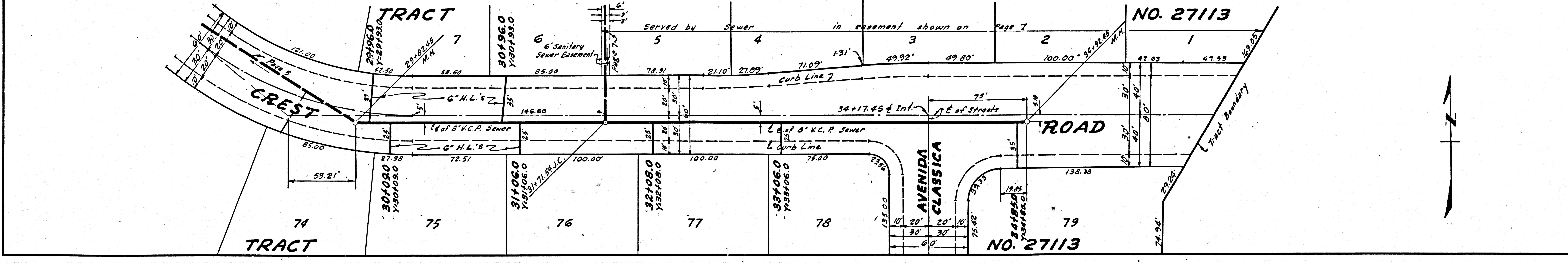
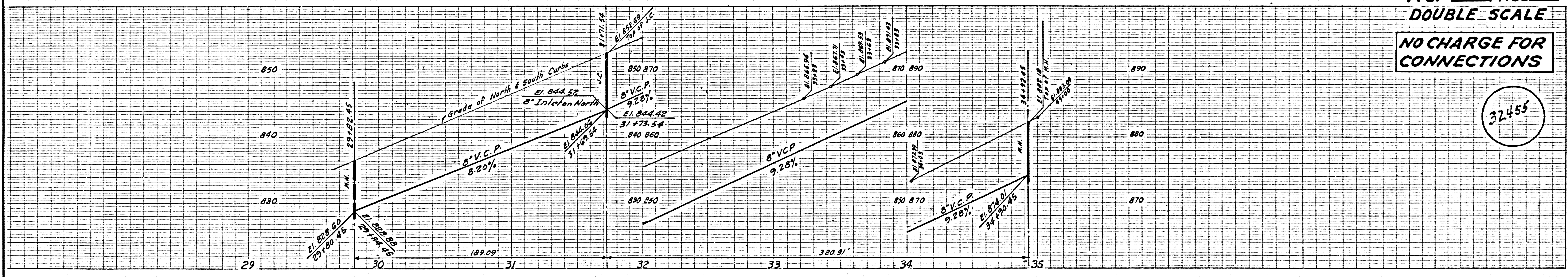
NO CHARGE FOR CONNECTIONS

32454



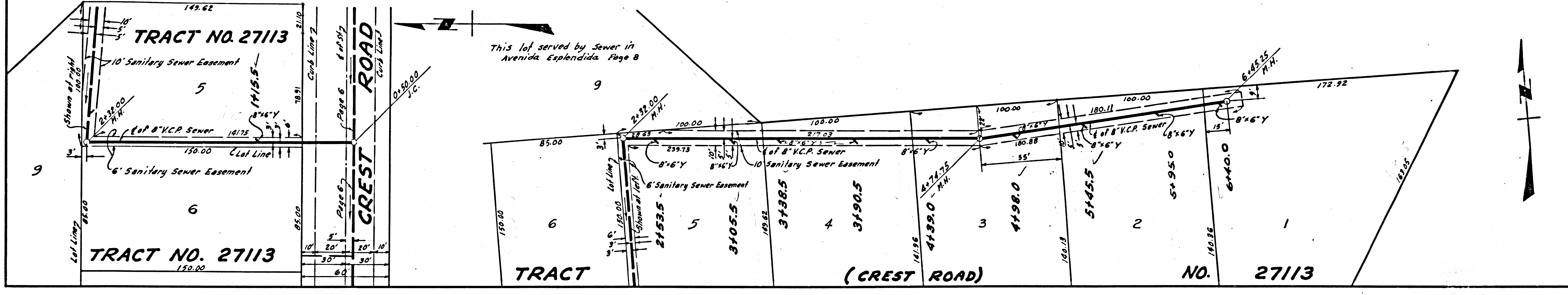
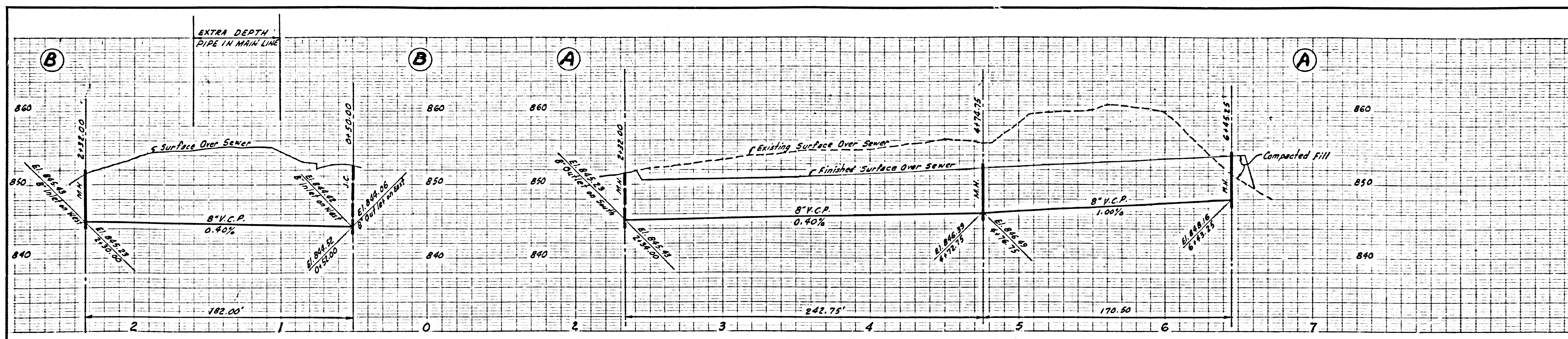
NO CHARGE FOR CONNECTIONS

32455

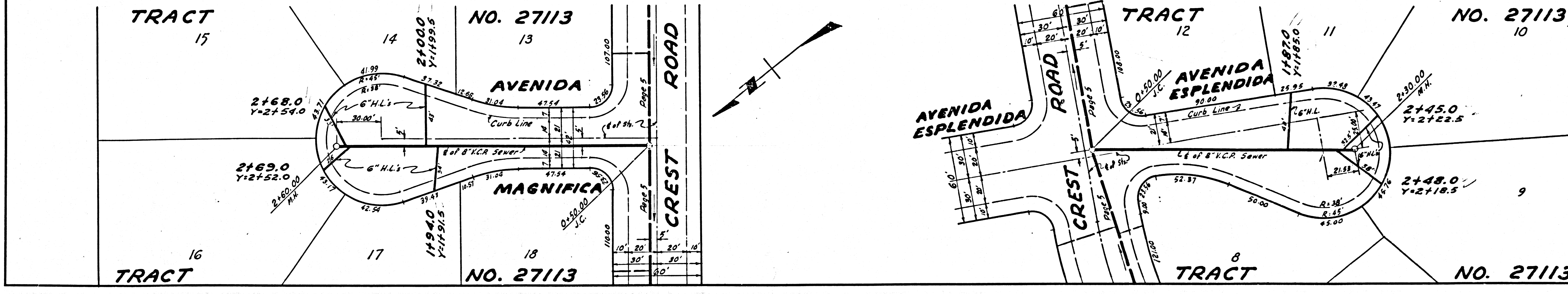
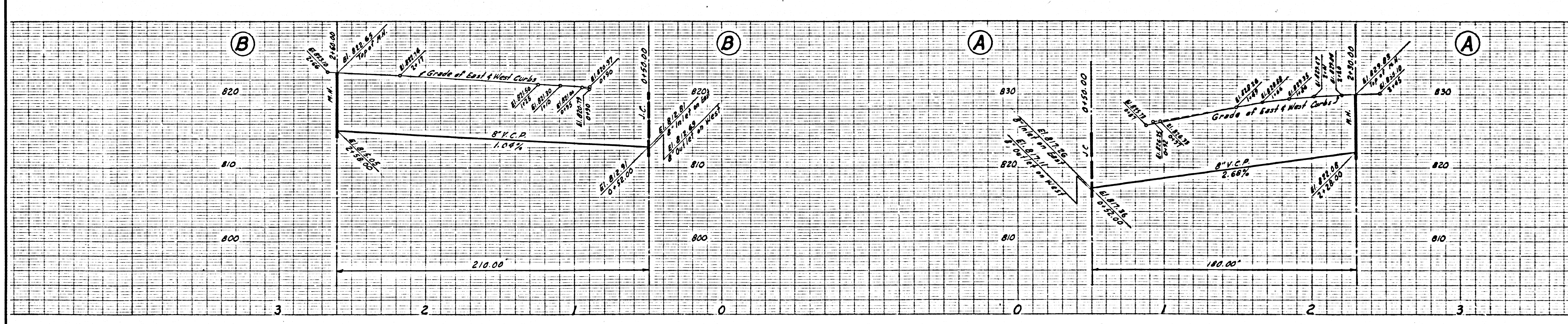




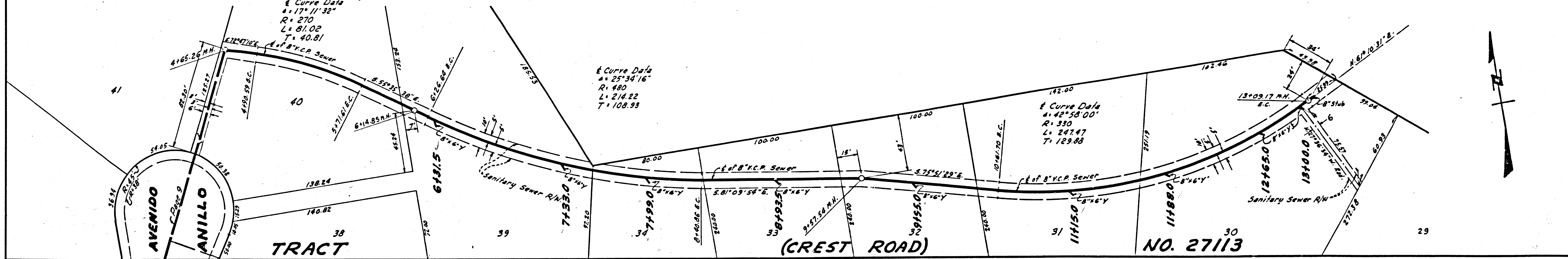
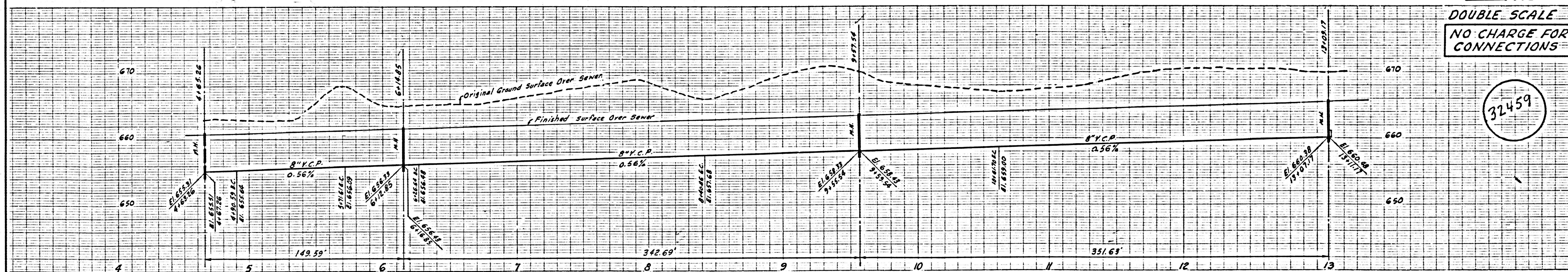
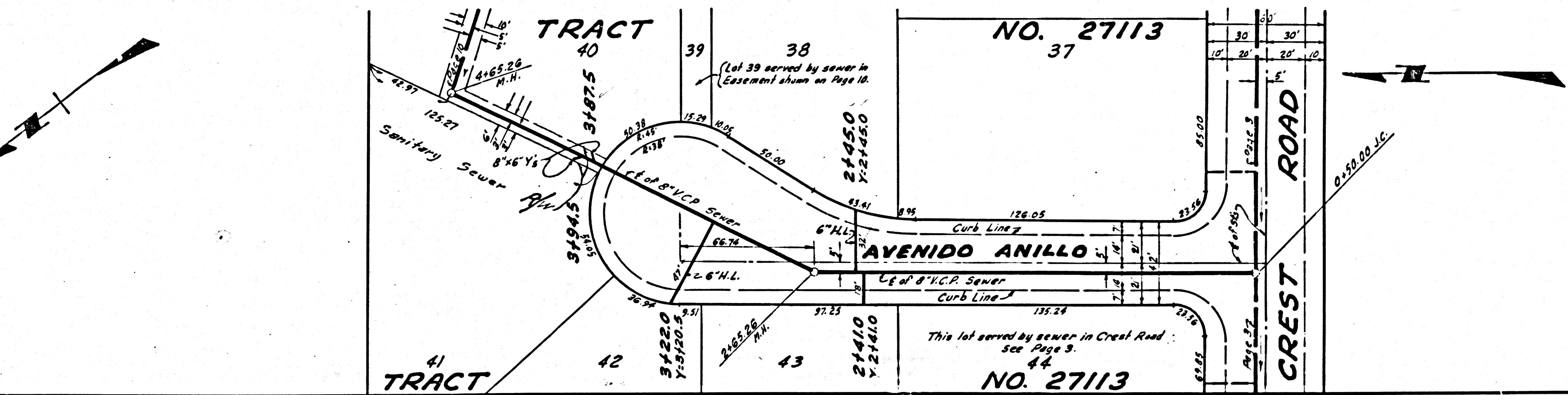
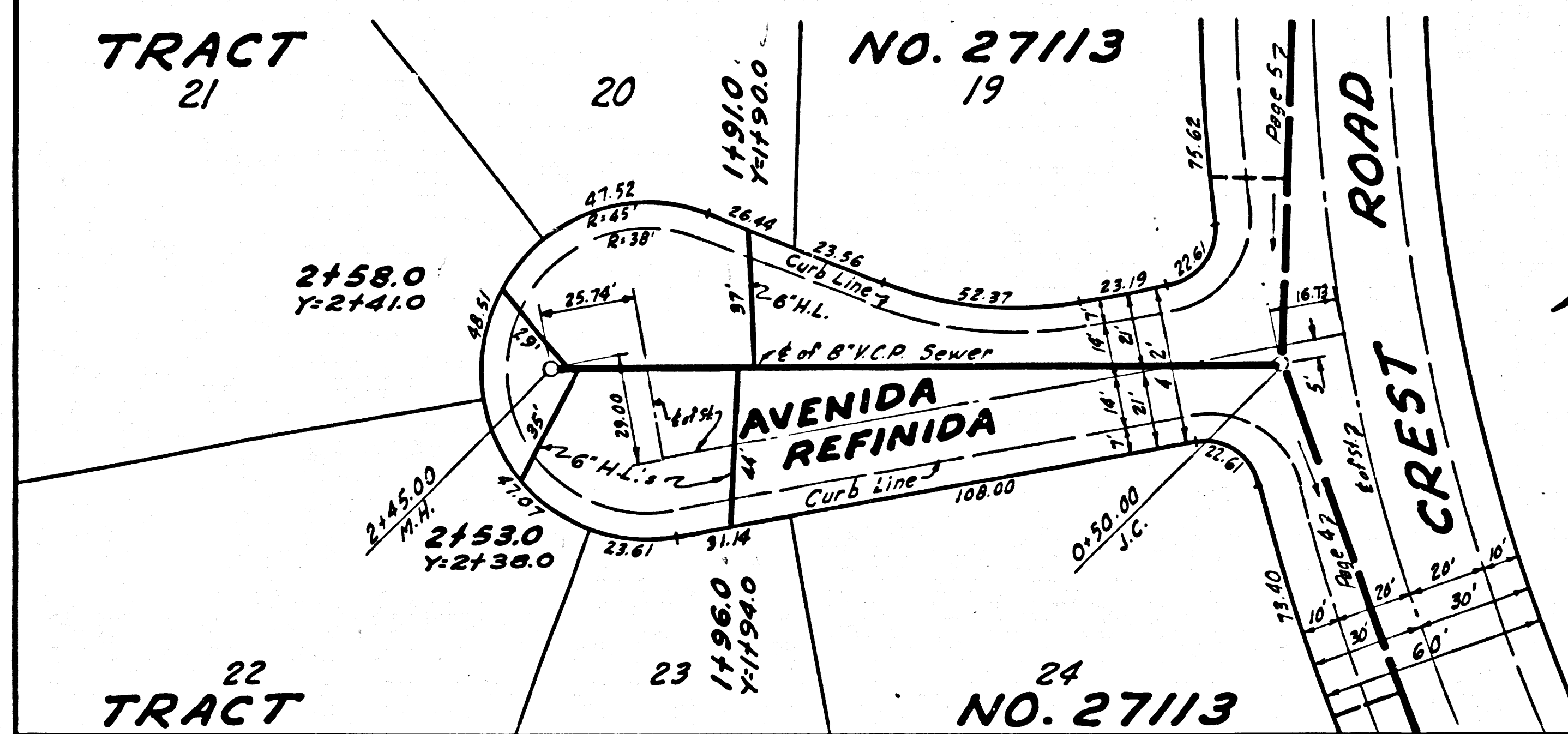
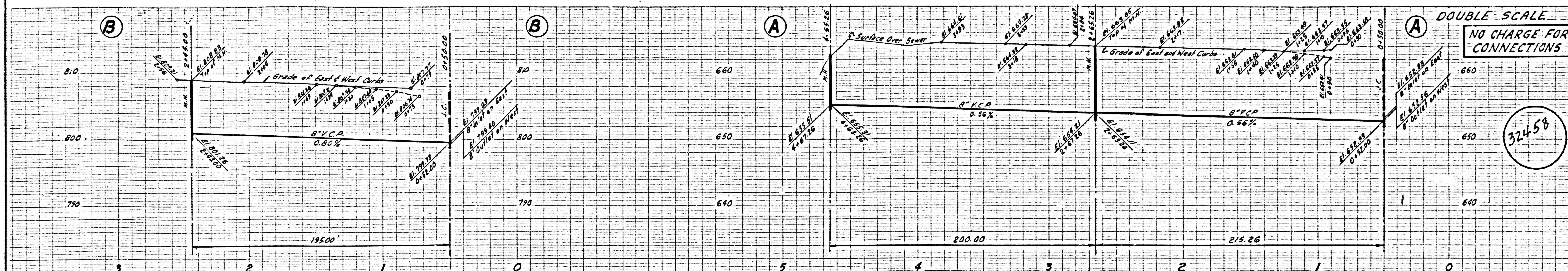
32456



32457

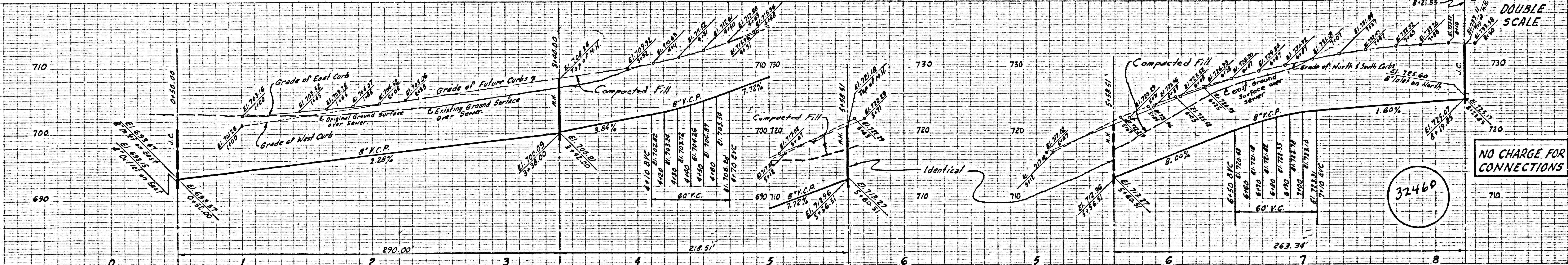






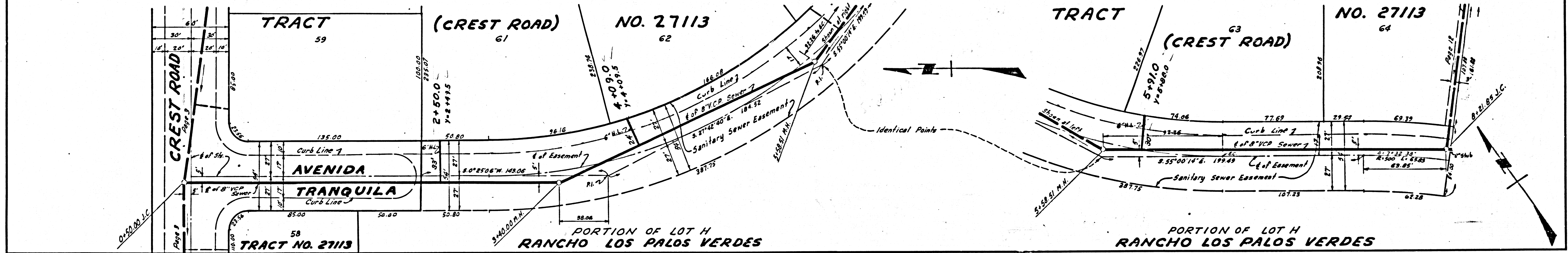


DOUBLE SCALE

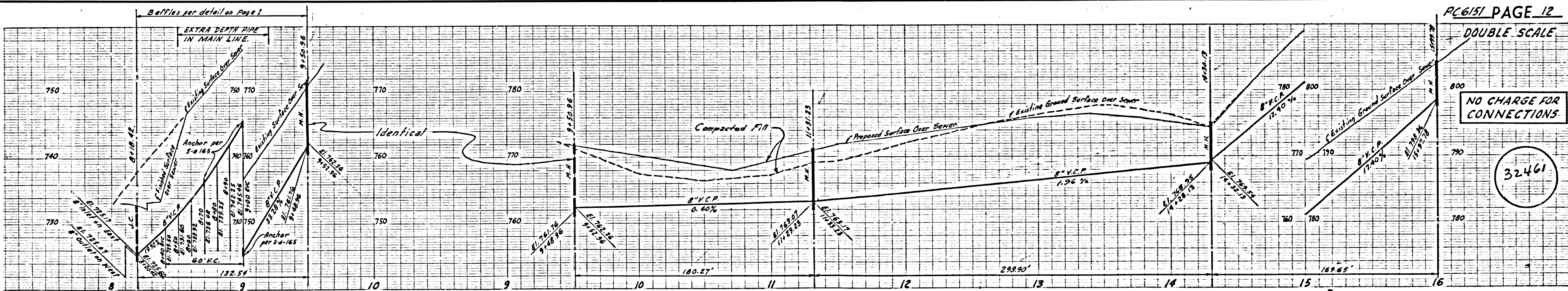


NO CHARGE FOR CONNECTIONS

32460



DOUBLE SCALE



NO CHARGE FOR CONNECTIONS

32461

