

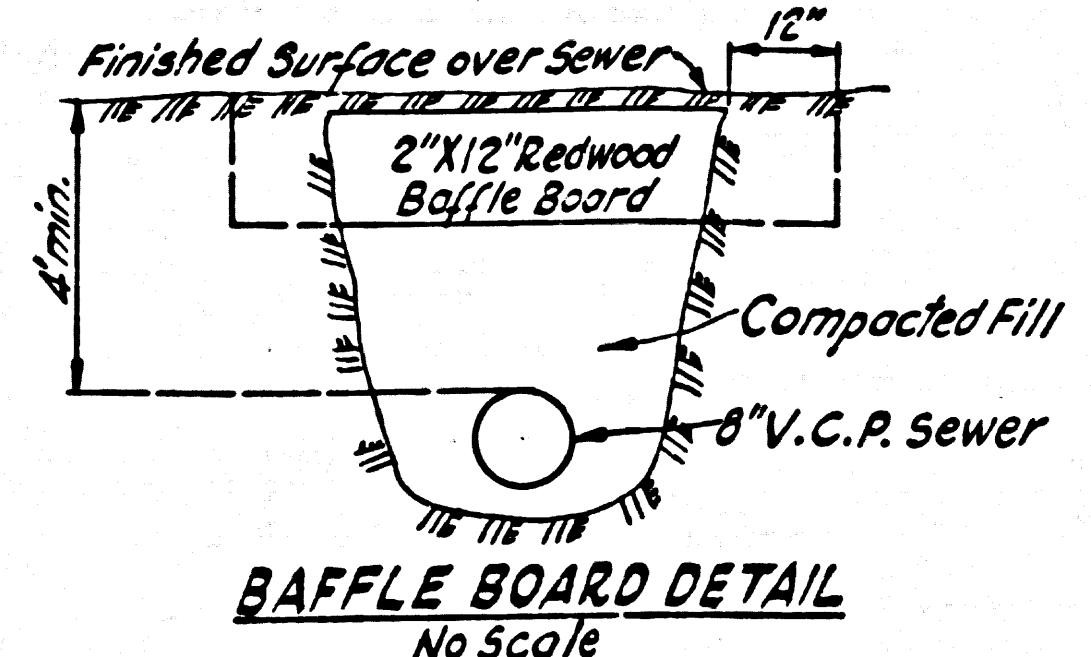
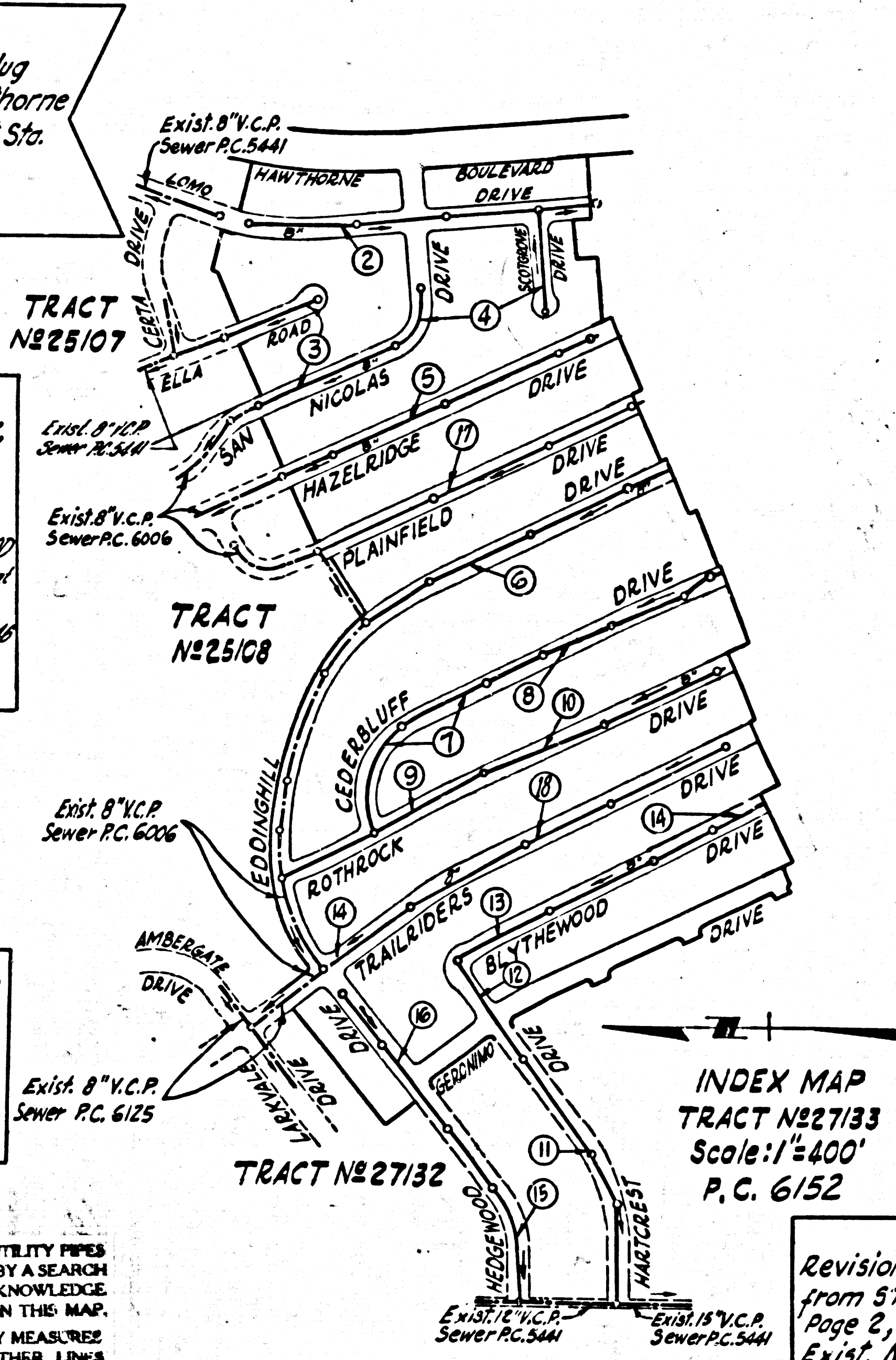
Bench Mark:  
 SY 4380 2" I.P. with concrete plug  
 & spk. 12" deep ± 77' W/O Hawthorne  
 Blvd. approx. ctr. of Long Tangent St.  
 29+00 ± 1/2 Mi. N. Crest Road.  
 Elev. 1030.973'

REVISIONS: 1-19-63  
 Added Sewers in RAINFIELD DRIVE, Page 18  
 and TRAILRIDERS DRIVE, Page 18  
 Moved Sewers to the West side of Street  
 and removed 1/2" from the East side in  
 EDGEMOUNT DRIVE, Page 8, and LILIA ROAD  
 DRIVE, Pages 13 and 14. Removal of manhole at  
 Sta. 1140 from Sta. 1112.278 to Sta. 1112.516  
 on Page 12  
 Jack C. Lansing

NOTE:  
 1. LOT NOS. 94 THROUGH 98 INCLUSIVE  
 AND LOT NOS. 131, 134 & 135 ARE SERVED  
 BY SANITARY SEWER IN EDGEMOUNT  
 DRIVE PER P.C. 6000.  
 2. LOT 101 IS SERVED BY  
 SANITARY SEWER IN TRAILRIDERS  
 DRIVE PER P.C. 6006

REVISIONS: 8-12-63  
 Changed Sewer alignment from Sta. 708.00  
 to Sta. 151.840' and added M.H. at  
 Sta. 151.028' in EDGEMOUNT DRIVE  
 on Page 8  
 Ralph Schaffer 8/15/63

PRIVATE ENGINEER'S  
 NOTICE TO CONTRACTOR  
 THE EXISTENCE AND LOCATION OF ANY UNDERGROUND UTILITY PIPES  
 OR STRUCTURES SHOWN ON THESE PLANS ARE OBTAINED BY A SEARCH  
 OF THE AVAILABLE RECORDS. TO THE BEST OF OUR KNOWLEDGE  
 THERE ARE NO EXISTING UTILITIES EXCEPT AS SHOWN ON THE MAP.  
 THE CONTRACTOR IS REQUIRED TO TAKE PRECAUTIONARY MEASURES  
 TO PROTECT THE UTILITY LINES SHOWN AND ANY OTHER LINES  
 NOT OF RECORD OR NOT SHOWN ON THE DRAWING.



NOTES:  
 1. Each end of Baffle Board will extend  
 one foot into undisturbed ground.  
 2. The upper layer of backfill to be one foot  
 minimum top soil. Top soil shall be tamped  
 in place & planted with mustard & ryegrass  
 seed & adequately watered until growth is  
 restored.  
 3. Baffle Boards shall be spaced so that the  
 top of the lower board shall be level with the  
 bottom of the next higher board.  
 4. 90% Compaction is obtained in the backfill  
 within the back, baffles will not be required.

REVISION: Page 3 LILIA ROAD revised  
 Sewers to "As Built". Change Sta. 3+52.73  
 to 3+42.68  
 J.R. Schaffer 9/15/63  
 DATE 130 91  
 APPROVED: Ralph Schaffer 9/15/63

NO CONNECTIONS FOR THE DISPOSAL OF  
 INDUSTRIAL WASTES SHALL BE MADE TO  
 SEWERS SHOWN ON THESE DRAWINGS  
 WITHOUT WRITTEN PERMISSION FROM THE  
 CHIEF ENGINEER AND GENERAL MANAGER  
 OF THE COUNTY SANITATION DISTRICTS.

NO CHARGE FOR  
 CONNECTIONS  
 E.W. Grant

Nov. 14, 1962  
 Revision: Page 4, Deleted Main Line  
 from STA. 2+88.11 to Lomo Drive.  
 Page 2, Added Main Line from  
 Ex'ist. M.H. STA. 0+37.00 to STA.  
 1+05.00.  
 Jack C. Lansing  
 Approved

DOUBLE SCALE  
 LOMITA BLDG. DIST. NO. 12

PROFILE ALIGNMENT AND GRADE OF  
 SANITARY SEWERS P.C. 6152  
 TO BE CONSTRUCTED IN PAGE 1  
 J.N. 0357.75

TRACT No. 27133  
 PRIVATE CONTRACT NO. 6152

S. 27  
 9 SHEETS; 18 PAGES  
 SCALE: VERT. 1" = 5' HORIZ. FEB. 1962  
 PREPARED IN THE OFFICES OF  
 ENGINEERING SERVICE CORPORATION

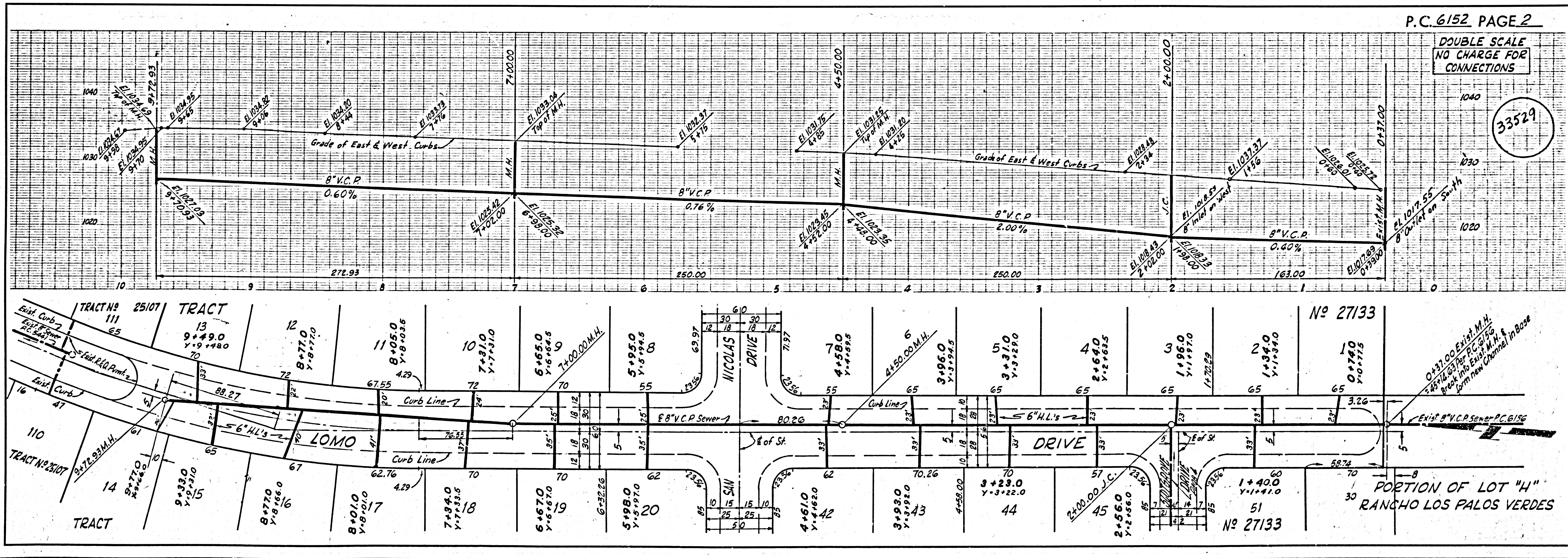
By: [Signature]  
 REG. C. E. NO. 3692  
 FOR LEGEND SEE PLAN NO. S-A-64

PROVIDE STAKES ON THE PROPERTY LINE OR PROPERTY LINES PRODUCED AT RIGHT ANGLES TO THE SEWER LINE AT THE CENTER LINE OF EACH MANHOLE.  
 NO REPRESENTATIVE OF THE COUNTY ENGINEER WILL SURVEY OR LAYOUT ANY PORTION OF THE WORK.  
 THE OWNER OR HIS AUTHORIZED REPRESENTATIVE SHALL FURNISH THE COUNTY ENGINEER WITH GRADE SHEETS AND STATIONING FOR ALL HOUSE LATERALS AND Y BRANCHES AND SHALL PROVIDE STAKES FOR THEM AT THEIR PROPER LOCATIONS WITH STATIONING PLAINLY MARKED. ANY CHANGE IN LOCATION SHALL BE REQUESTED IN WRITING BY THE OWNER OR HIS REPRESENTATIVE.  
 NO REVISIONS SHALL BE MADE IN THESE PLANS WITHOUT THE APPROVAL OF THE COUNTY ENGINEER.  
 1. USE STANDARD MANHOLE FRAMES AND COVERS, S.A.-117, EXCEPT AS NOTED.  
 2. USE 12" STRENGTH PIPE, ALL PIPE IS STANDARD DEPTH EXCEPT AS NOTED.  
 3. USE "WOOD LOCK" OR "SPREAD SEAL" FOR ALL V.C.P. JOINTS PER SPECIFICATIONS SECTIONS 36 & 48.  
 4. RESURFACE ALL TRENCH WITHIN PAVED AREA TO MEET L.A. COUNTY ROAD DEPT., OR CALIF. STATE HIGHWAY DEPT. REQUIREMENTS IN ACCORDANCE WITH PERMITS.  
 5. ENCASE FOUR FEET OF SEWER AT POINTS OF INTERFERENCE WITH POLES, S.A.-172 CASE III.  
 6. HOUSE LATERALS TO BE CONSTRUCTED WITH INVERTS AT PROPERTY LINE 6 FEET BELOW CURB GRADE EXCEPT AS NOTED.  
 7. ALL STRUCTURES SHALL BE BRICK SEWER STRUCTURES, S.A. 104. PARCAST REINFORCED CONCRETE MANHOLES PER S.A.-152 OR S.A.-173 MAY BE USED AS AN ALTERNATE IN LOCATION APPROVED BY THE COUNTY ENGINEER.  
 8. FOR ALLOWABLE LEAKAGE TEST USE FORMULA NO. \_\_\_\_\_ SPEC. S, SEC. 64.  
 9. MANHOLE TOPS IN UNIMPROVED RIGHTS-OF-WAY TO BE 6" ABOVE FINISHED GRADE EXCEPT AS NOTED.  
 10. THE PRIVATE ENGINEER IS TO FURNISH THE HOUSE LATERAL DEPTH AT THE PROPERTY LINE BELOW THE TOP OF CURB ELEVATION FOR EACH.  
 11. THE CONTRACTOR SHALL NOTIFY THE CONSTRUCTION DIVISION BY TELEPHONE M.A. 9-447, EXT. 6151 AT LEAST 48 HOURS BEFORE STARTING ANY WORK UNDER THIS CONTRACT.  
 12. SPECIFICATIONS DATED OCT. 23, 1961 APPLY IN THE CONSTRUCTION OF THIS PROJECT.  
 13. (A) NO CONSTRUCTION WILL BE PERMITTED IN FILLED AREAS UNLESS ACCEPTABLE CERTIFICATION IS SUBMITTED TO THE CONSTRUCTION DIVISION OF THE COUNTY ENGINEERS DEPARTMENT THAT COMPACTION IS GREATER THAN 90%  
 (B) IF COMPACTION IS LESS THAN 90% THE SEWER MUST BE CAULKED & SPECIAL M.H. BASES CONSTRUCTED AS SHOWN ON PLANS  
 (C) IF COMPACTION IS GREATER THAN 90% CAULKING AND SPECIAL M.H. BASES ARE NOT REQUIRED. HOWEVER, JOINT COMPOUND MUST BE SUBSTITUTED FOR CEMENT MORTAR FOR ALL JOINTS IN FILLED AREAS.

ENGINEERING SERVICE CORPORATION 1127 W. WASHINGTON BLVD. LOS ANGELES 15, CALIF. RI. 9-7281			
REVISIONS		TRACED BY C.E.B.A.	
		DES'G'D BY C.M.R. & F.K.K.	
		CK'D BY G.M.P.	
		SUBMITTED	
SUB STRUCTURES OK'D			
W. O. NO.	DWG. NO.	DATE	SCALE
GG21-224		FEB. 1962	AS NOTED
			L.B. P.B.
			100% 100%

NOTE:  
 GRADES TO WHICH THIS IMPROVEMENT IS TO BE CONSTRUCTED ARE SHOWN ON PLANS AND PROFILES. GRADE POINTS FOR TOP OF CURBS, CENTER LINE OF STREETS, OR CENTER LINE OF ALLEES ARE SHOWN BY CIRCLES ON PROFILES. AT ALL POINTS BETWEEN DESIGNATED POINTS THE GRADE SHALL BE ESTABLISHED SO AS TO CONFORM TO A STRAIGHT LINE DRAWN BETWEEN SAID DESIGNATED POINTS.  
 ELEVATIONS ARE IN FEET ABOVE U.S.C. & G.S. SEA LEVEL DATUM OF 1929.  
 THIS DRAWING AND THE DATA HEREON ARE HEREBY MADE A PART OF THE SPECIFICATIONS.  
 WORK SHALL BE CONSTRUCTED ACCORDING TO SPECIFICATIONS ON FILE IN THE OFFICE OF THE COUNTY ENGINEER AND SHALL BE PROSECUTED ONLY IN THE PRESENCE OF THE COUNTY ENGINEER.  
 BEFORE WORK CAN BE STARTED, THE CONTRACTOR MUST OBTAIN A PERMIT TO EXCAVATE IN COUNTY STREETS FROM THE L.A. COUNTY ROAD DEPT., DISTRICT OFFICE NO. 8 AND PAY A FEE TO THE COUNTY ENGINEER, ROOM 380 COUNTY ENGINEERS BUILDING WEST END STREET SUFFICIENT TO COVER THE COST OF CONSTRUCTION INSPECTION AND RECORD PLANS.  
 APPROVAL OF THIS PLAN BY THE COUNTY OF LOS ANGELES DOES NOT CONSTITUTE A REPRESENTATION AS TO THE ACCURACY OF THE LOCATION OF OR THE EXISTENCE OR NON-EXISTENCE OF ANY UNDERGROUND UTILITY PIPE, OR STRUCTURE WITHIN THE LIMITS OF THIS PROJECT. THIS NOTE APPLIES TO ALL PAGES.  
 IF WORK IS TO BE DONE IN A STATE HIGHWAY, A PERMIT MUST BE OBTAINED FROM THE STATE OF CALIFORNIA, DIVISION OF HIGHWAYS, 120 SOUTH SPRING STREET.

COUNTY OF LOS ANGELES, CALIFORNIA  
 APPROVED, JOHN A. LAMBIE, COUNTY ENGINEER  
 APPROVED, [Signature], CHIEF ENGINEER  
 BY: [Signature] ASST. SANITATION ENGINEER  
 BY: [Signature] OFFICE ENGINEER  
 CHECKED BY: [Signature] OFFICE OF COUNTY ENGINEER, REG. C. E. NO. 2424  
 SUBMITTED: Jack C. Lansing  
 Palos Verdes-Centinel Valley Regional Engineer



P.C. 6152 PAGE 2

DOUBLE SCALE  
 NO CHARGE FOR  
 CONNECTIONS

33529

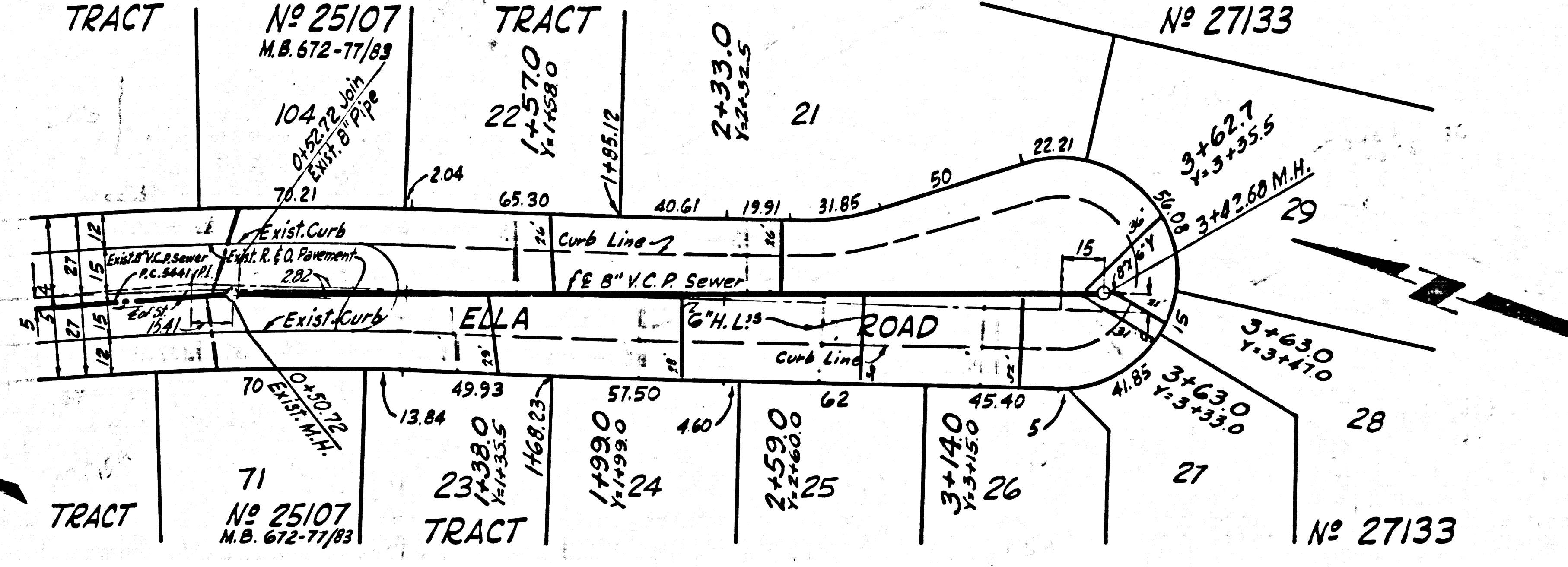
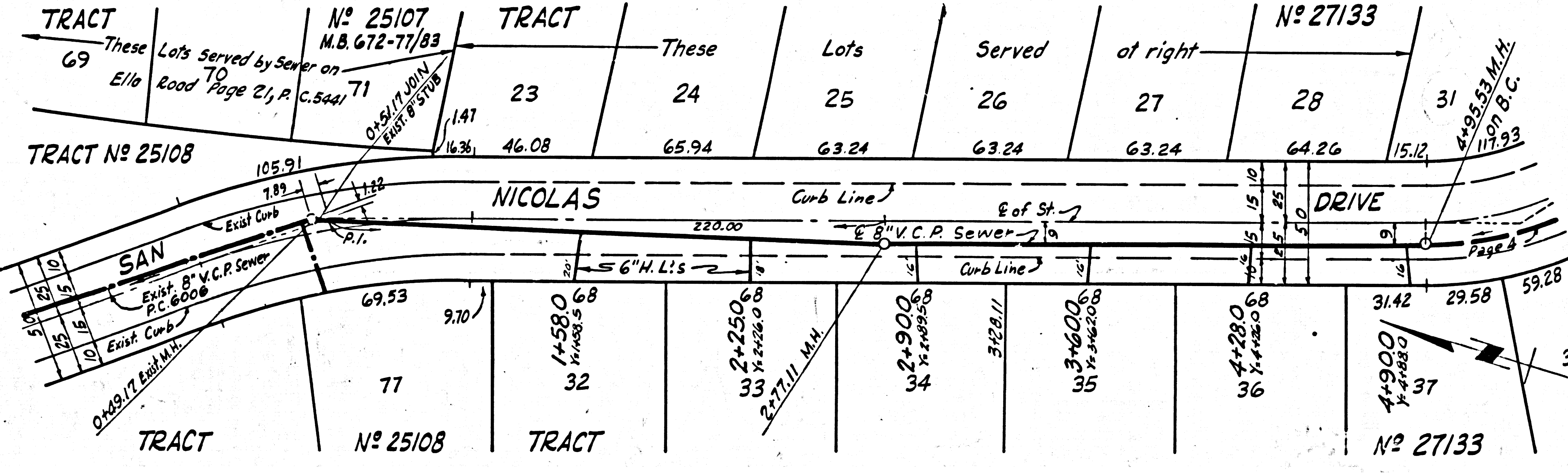
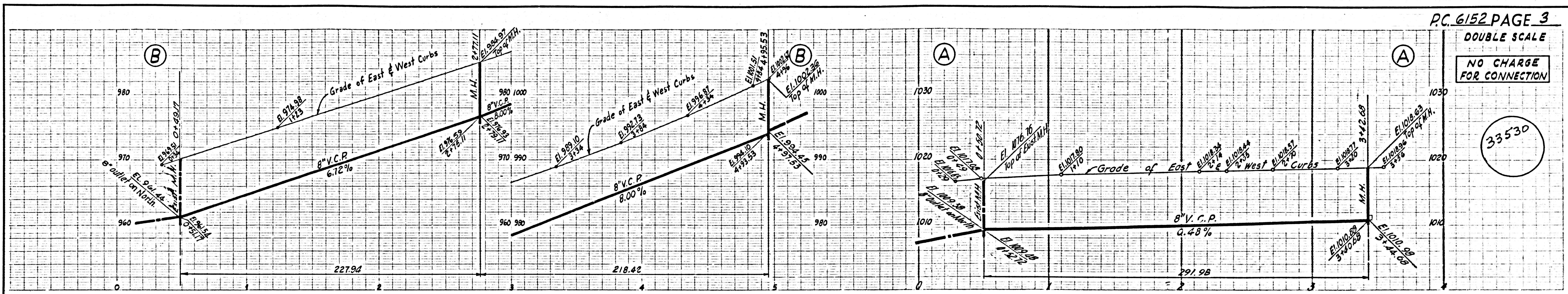
PORTION OF LOT "H"  
 RANCHO LOS PALOS VERDES



DOUBLE SCALE

NO CHARGE FOR CONNECTION

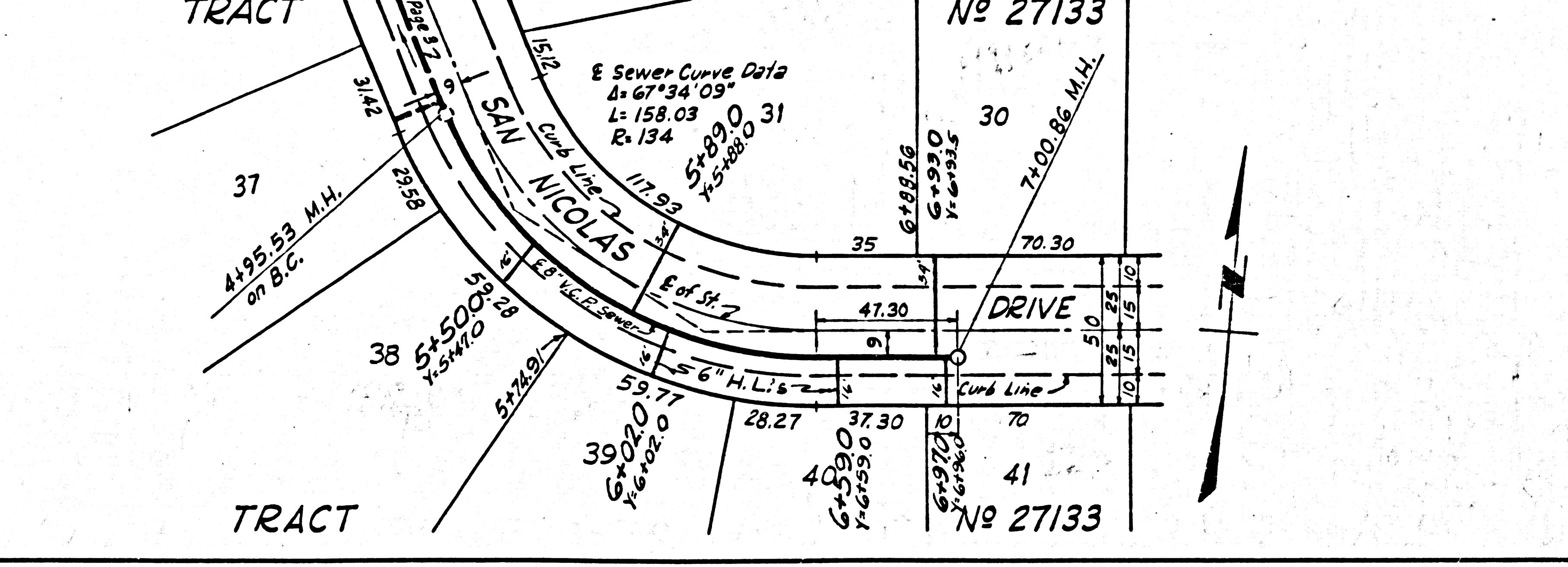
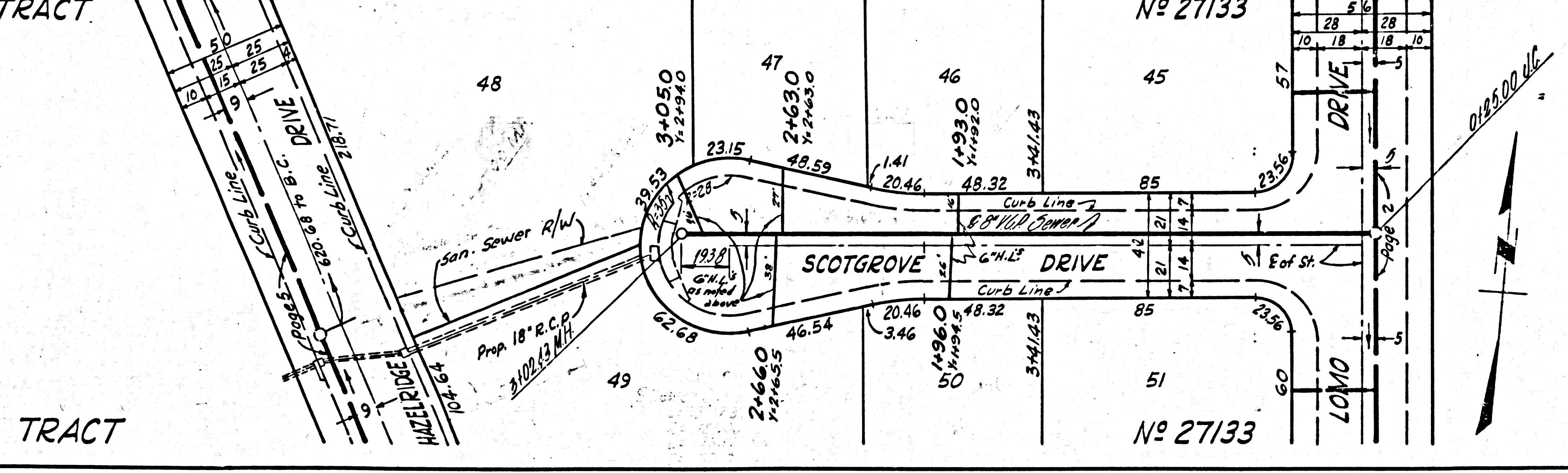
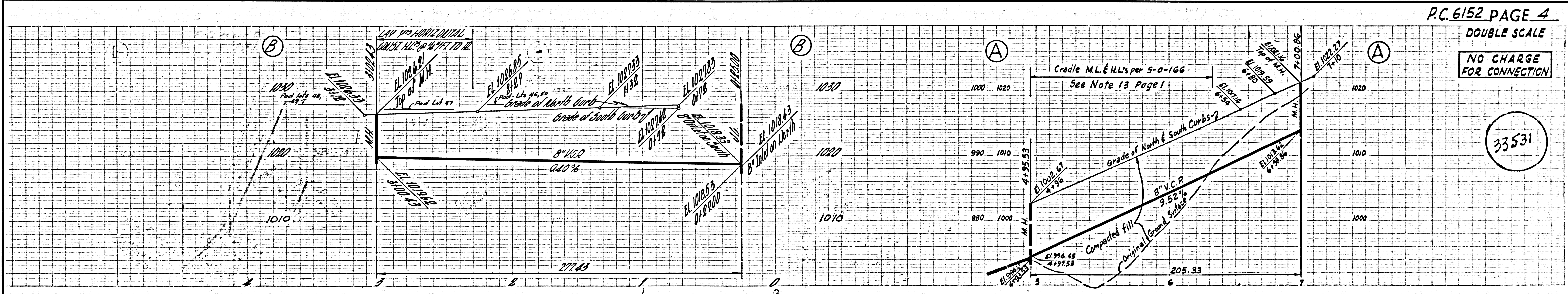
33530



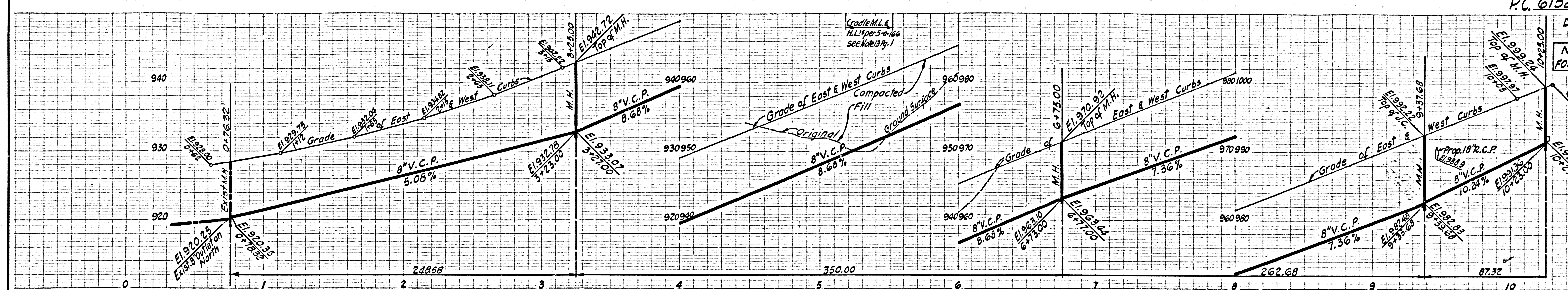
DOUBLE SCALE

NO CHARGE FOR CONNECTION

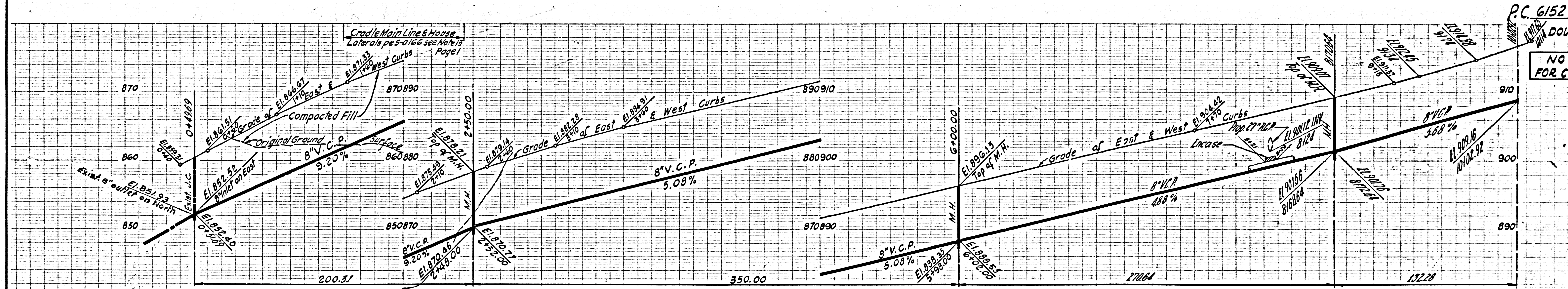
33531







TRACT #25108		TRACT 32	33	34	35	36	37	38	48	TRACT #27133	
77		These Lots Served from		San Nicolas Drive Page 3		This Lot Served from		San Nicolas Drive Page 4		These Lots Served from	
32.23 24.06		68.15	67.99	61.44	68.01	68.01	96.43	123.08	218.71	104.64	
<b>HAZELRIDGE DRIVE</b>											
E of St. 8" V.C.P. Sewer											
Curb Line											
73	74	75	76	77	78	79	80	81	82	83	84
58.93	64.63	47.90	31.01	31.01	31.68	44.97	51.00	54.75	64.40	64.80	74.10
65	64	63	62	61	60	59	58	57	56	55	54
14620	24310	32300	31401	31360	31680	44970	5100	54750	6440	64800	7410
TRACT #25108	TRACT										TRACT #27133

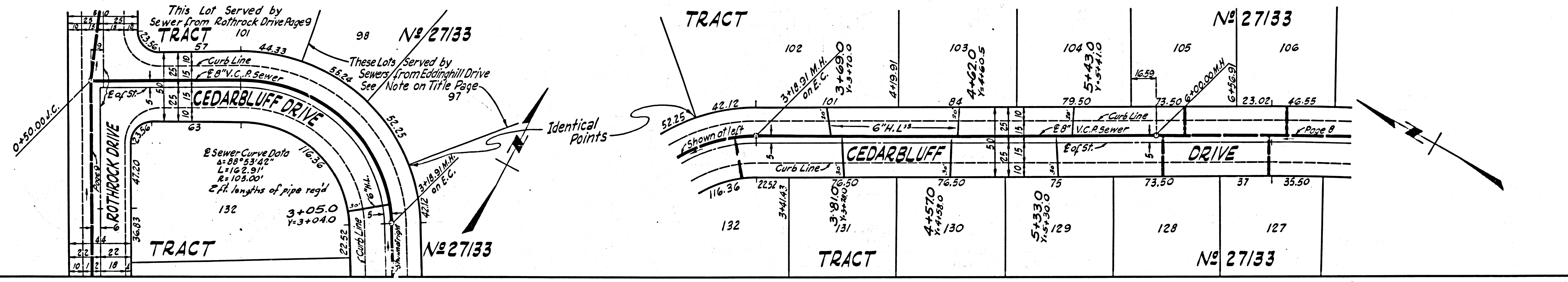
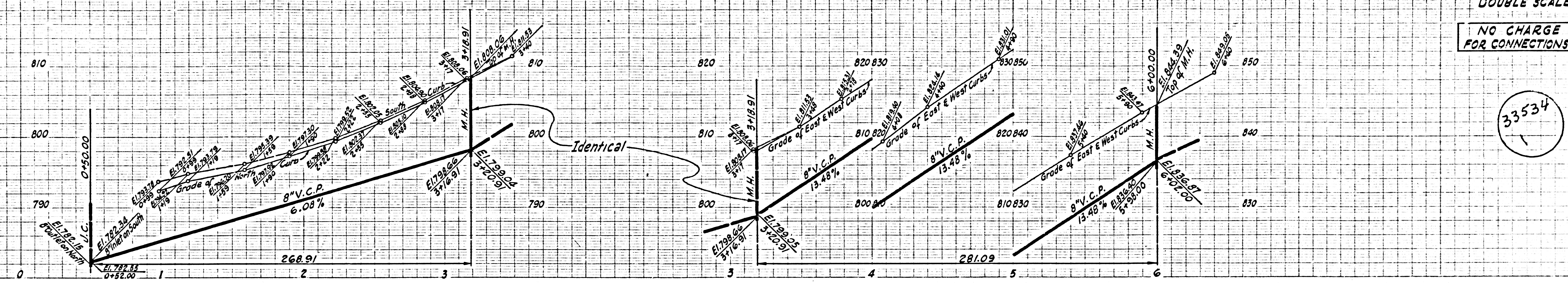


TRACT #25108		TRACT 67	68	69	70	71	72	73	74	75	76	77	78	79	TRACT #27133	
82		THESE LOTS SERVED FROM		PLAINFIELD DRIVE PAGE 17		75		76	77	78	79					
61.33		65.50	63.02	65.50	67	65	68	69	69	51.99	15.13	68.03	18.46	49.61	72.06	
<b>EDDINGHILL DRIVE</b>																
E of St. 8" V.C.P. Sewer																
Curb Line																
94	93	92	91	90	89	88	87	86	85	84	83	82	81	80	79	
96.74	16.50	99.00	14610	24360	31060	31730	41705	51070	51740	61400	71750	81000	90300	9710	99485	
TRACT #25108		TRACT										TRACT #27133				



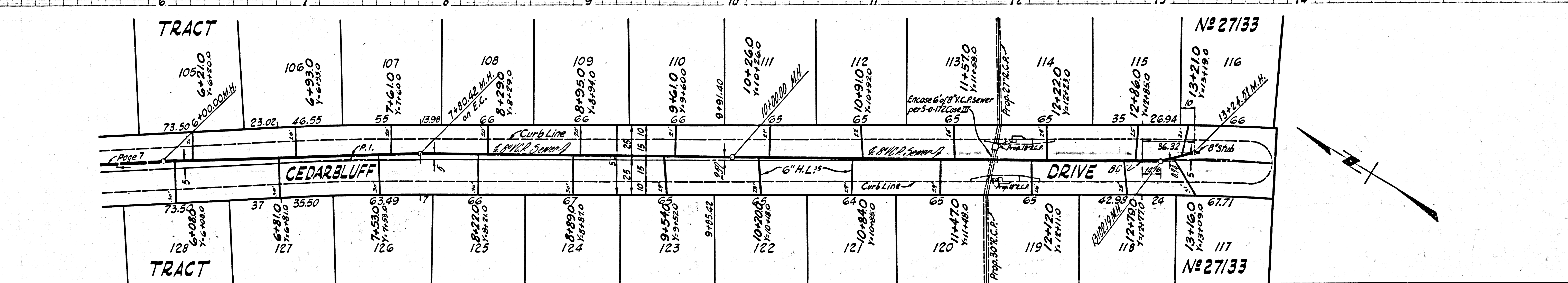
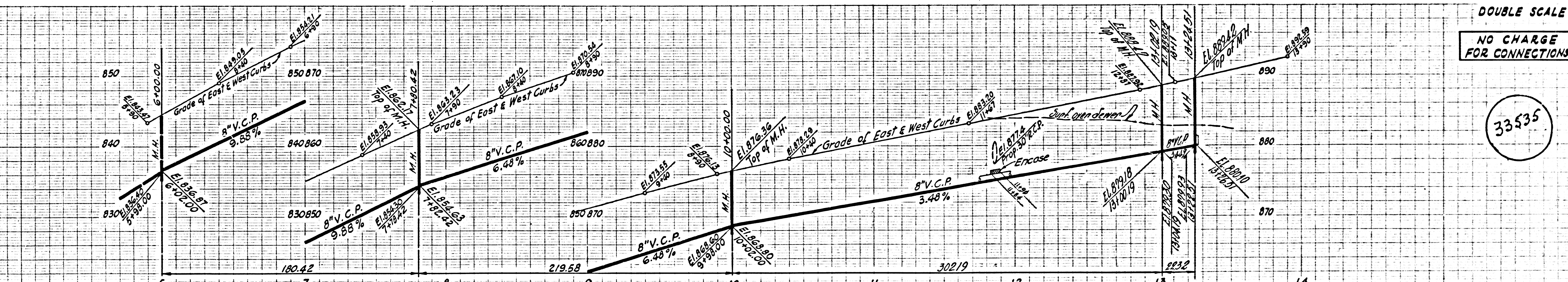
NO CHARGE FOR CONNECTIONS

33534



NO CHARGE FOR CONNECTIONS

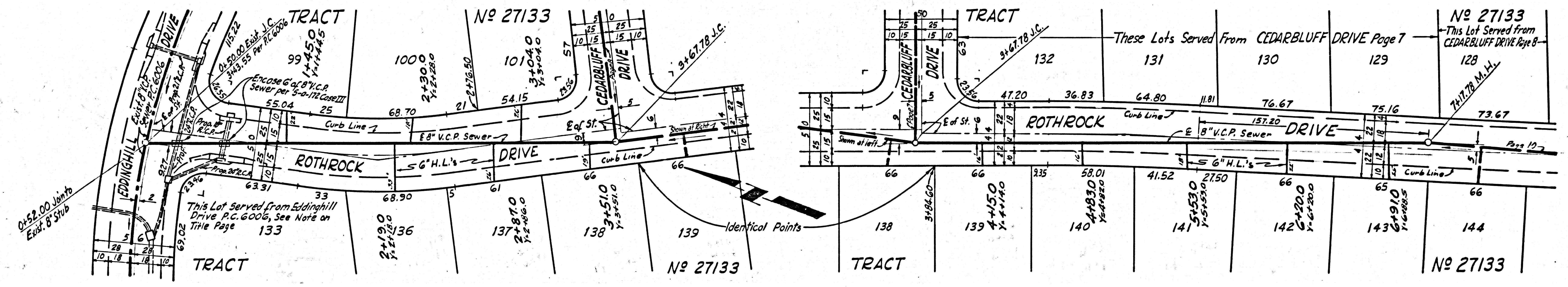
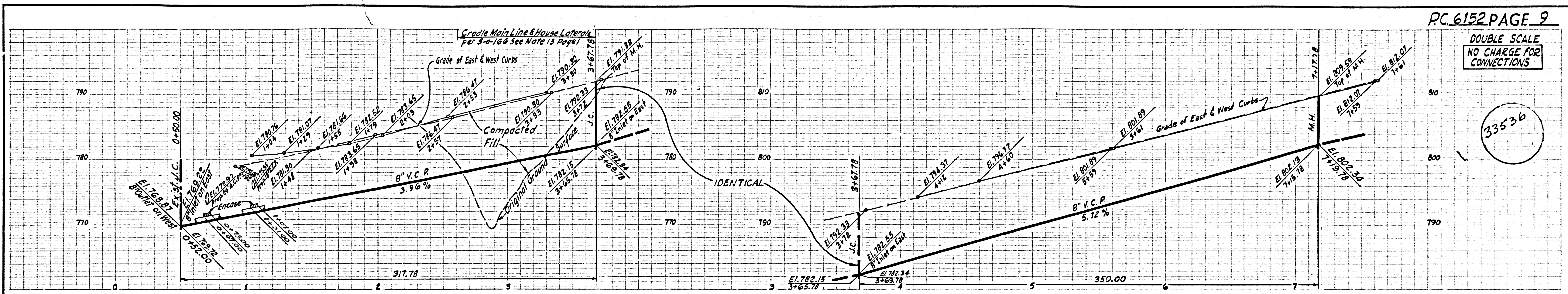
33535





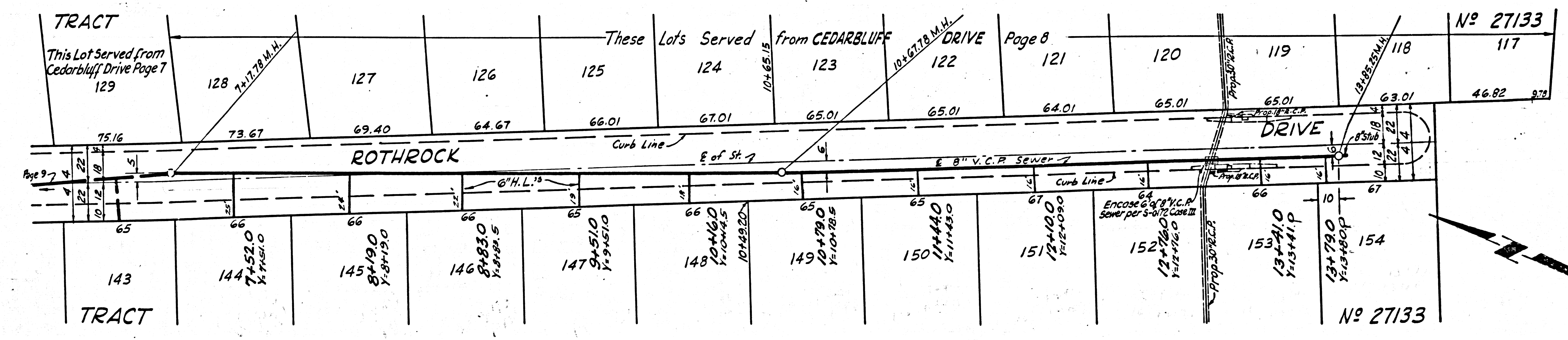
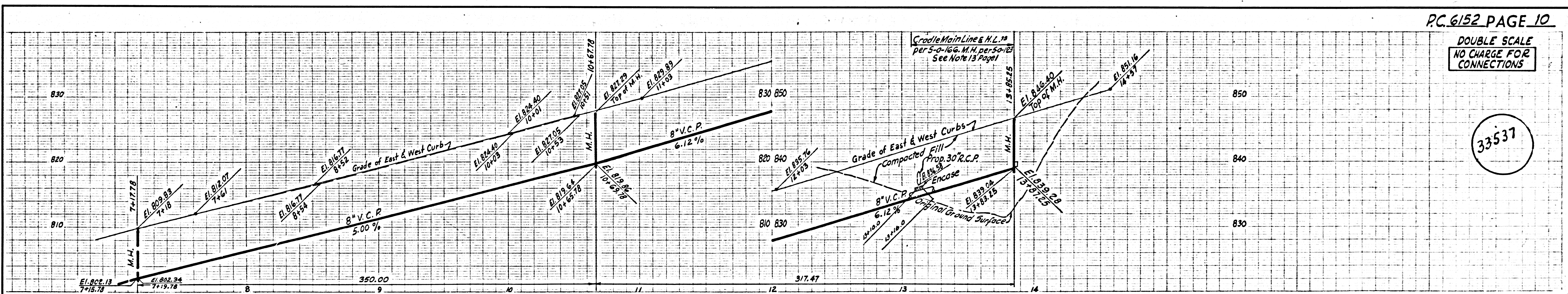
DOUBLE SCALE  
NO CHARGE FOR  
CONNECTIONS

33536



DOUBLE SCALE  
NO CHARGE FOR  
CONNECTIONS

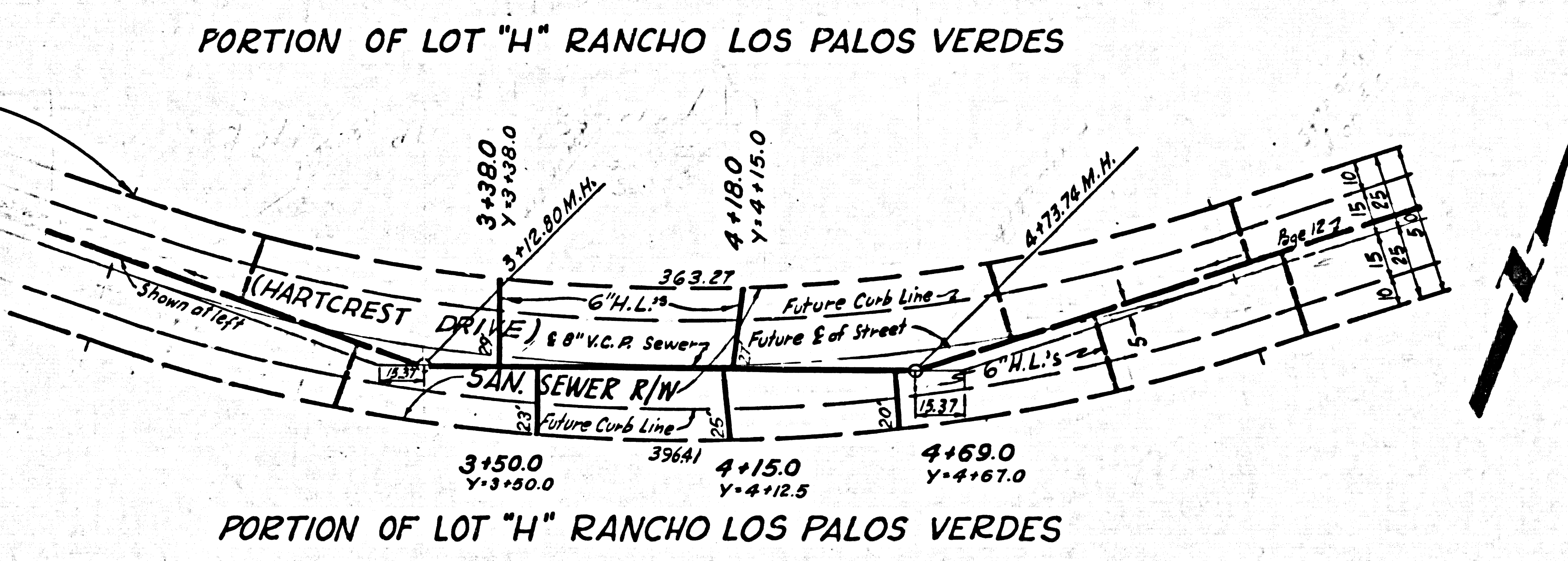
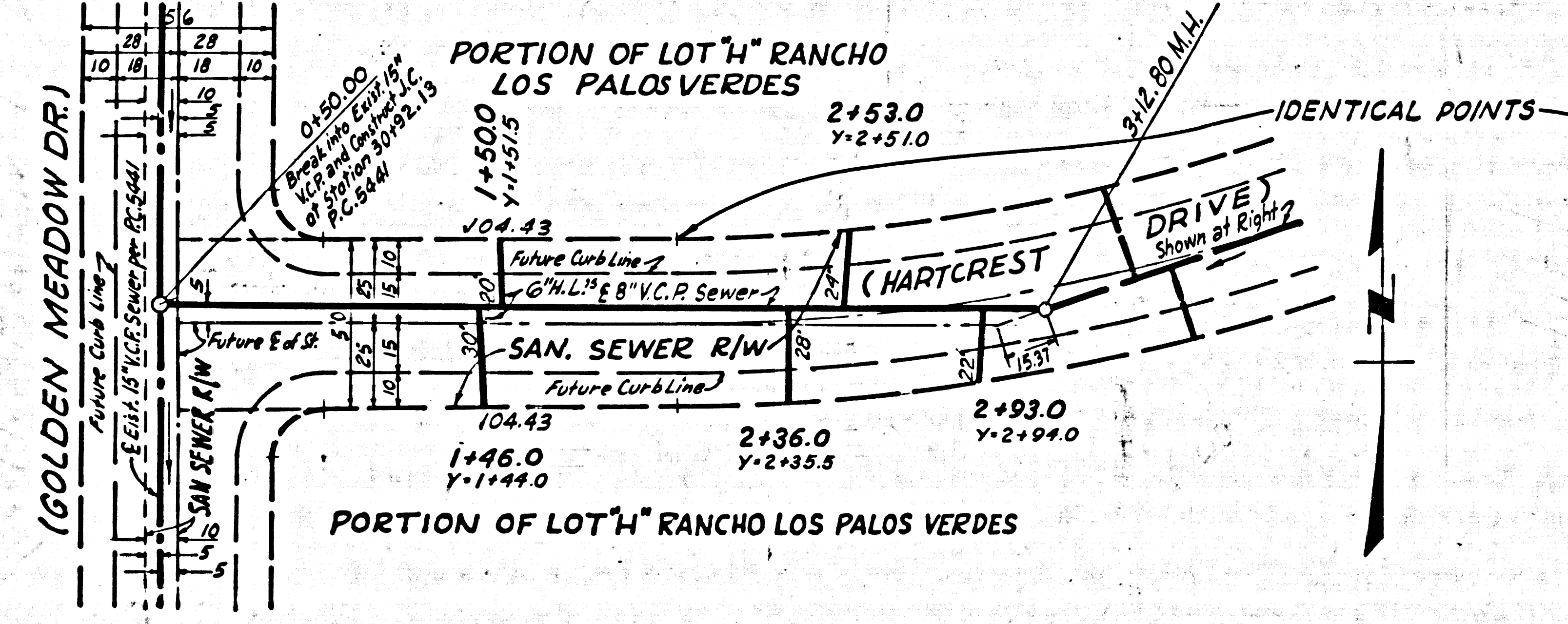
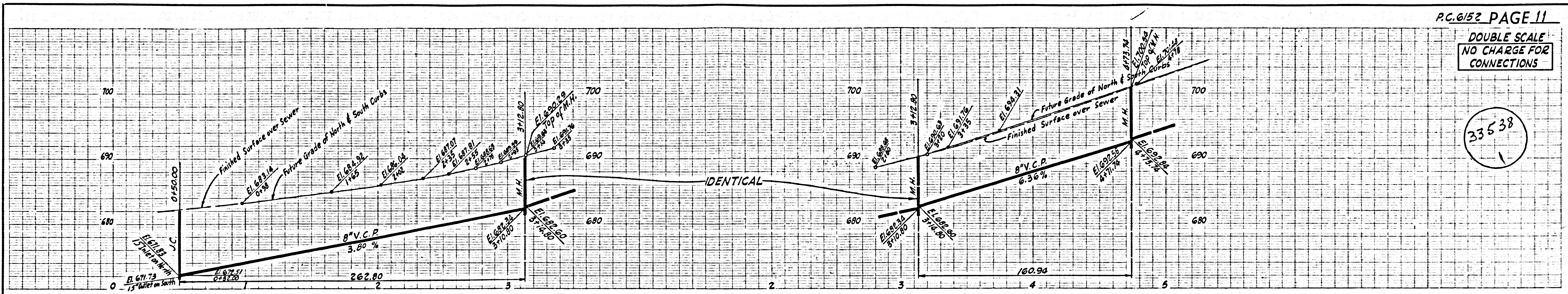
33537





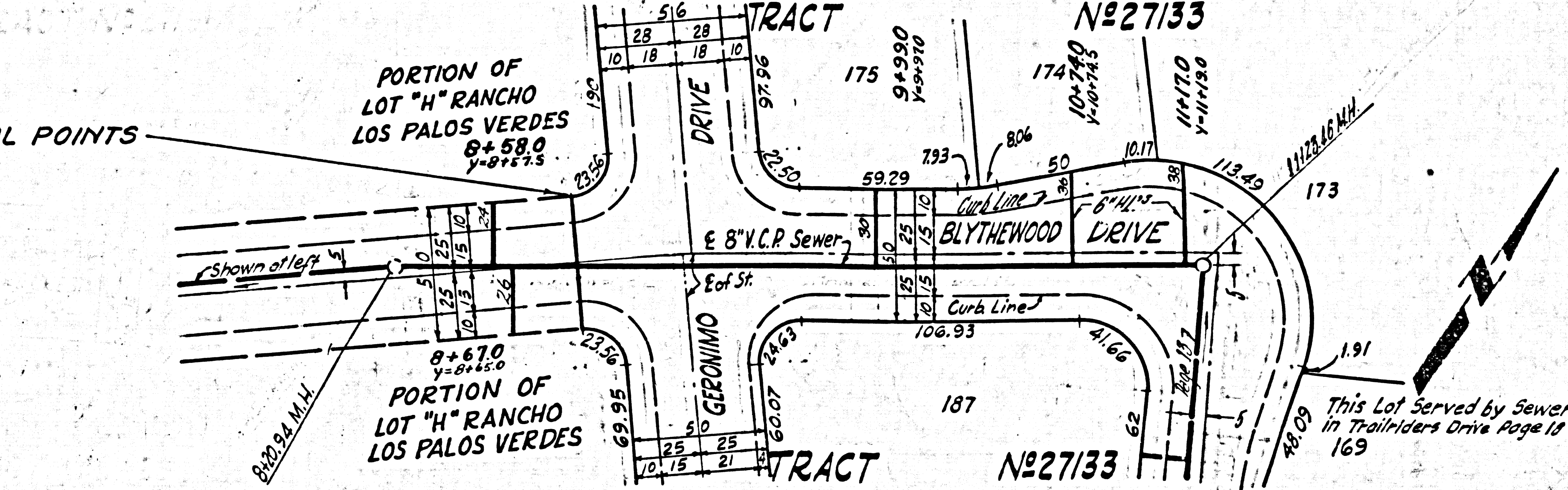
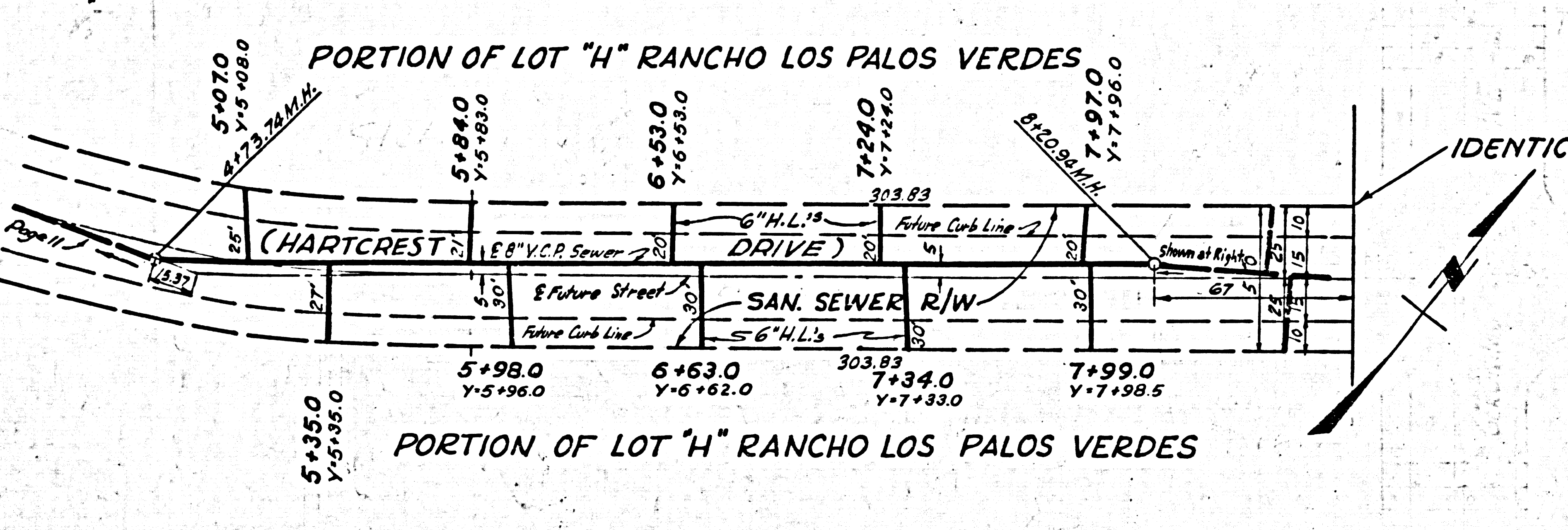
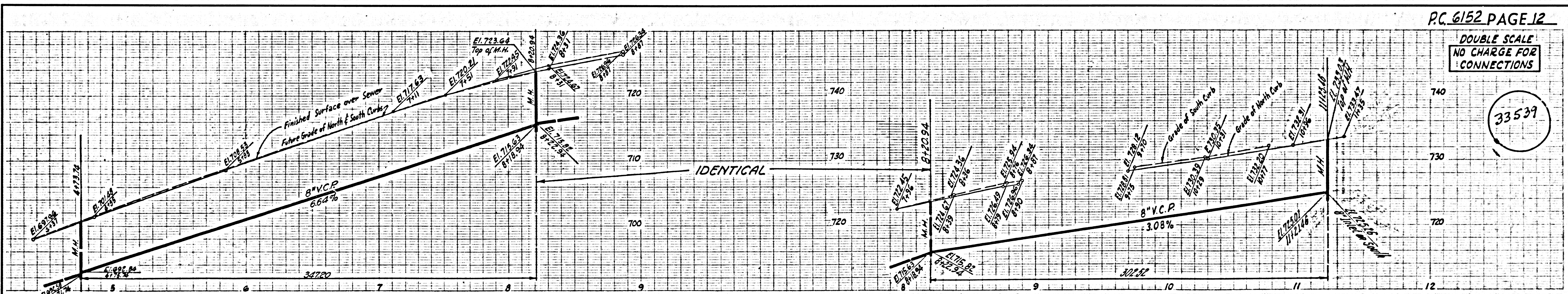
DOUBLE SCALE  
NO CHARGE FOR  
CONNECTIONS

33538



DOUBLE SCALE  
NO CHARGE FOR  
CONNECTIONS

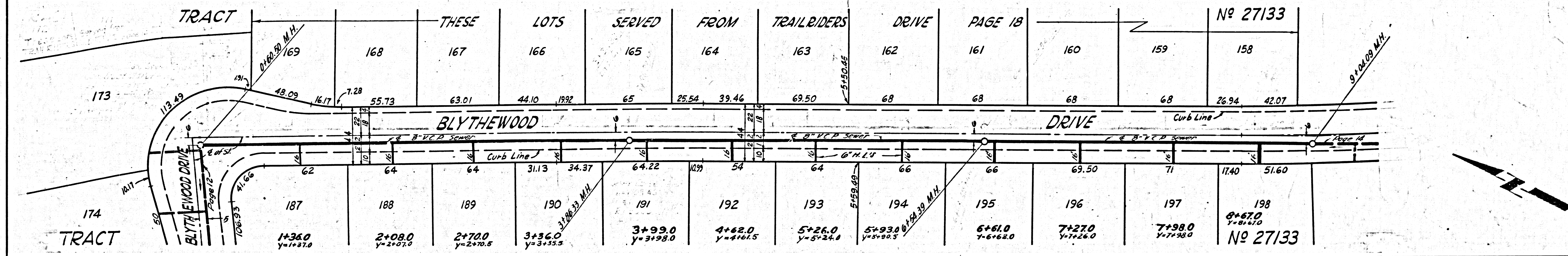
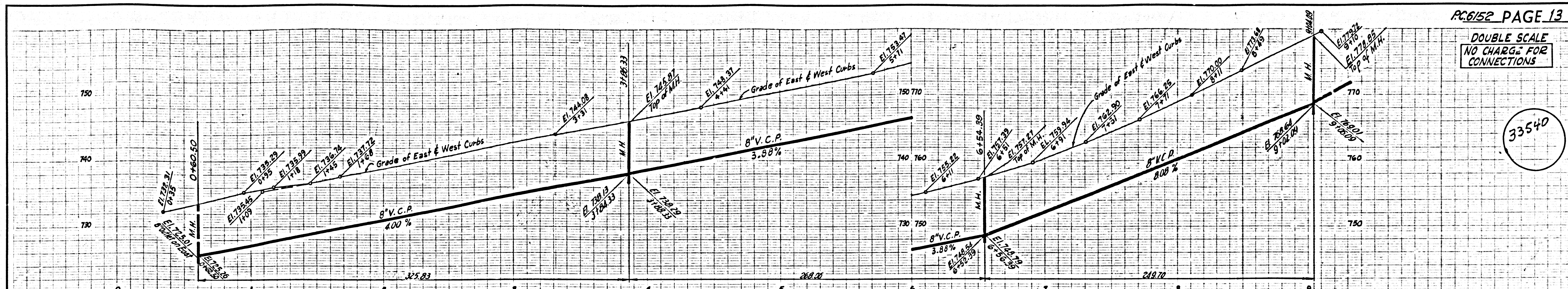
33539





DOUBLE SCALE  
NO CHARGE FOR  
CONNECTIONS

33540



DOUBLE SCALE  
NO CHARGE FOR  
CONNECTIONS

33541

