

Bench Mark
SY 4380 2" I.P. with conc. plug & spk.
12" deep ± 77' W/O E HAWTHORNE
BLVD. approx. ctr. of Long tangent
Sta. 29+00 ± 1 mi N. CREST ROAD
Elev. 1030.973'

Note: ISSUE NO HOUSE CONNECTION
PERMITS UNTIL SANITARY SEWER R/W
HAS BEEN CLEARED. CHECK WITH
SANITATION DIVISION.

REVISION: 1-4-63 Moved 6" H.L. from lot
20 to lot 89 page 10 B
Jack C. Lansing

REVISION: 1-9-63
Added Sewers in Plainfield Dr, Page 11
Trailriders Dr, Page 18, Geronomo
Dr., Pages 19 and 20.
Deleted Sewers in Easements from
Plainfield Dr. to Edginghill Dr., Page 3,
Trailriders Dr. to Blythwood Dr.
Page 6.
Deleted Sewer in Briarhurst Dr. from
Purple ridge Dr., 100 R. North, Page 9.
Moved Sewers to the west side & removed
H.C.'S from the east side in Edginghill Dr.,
Page 3, Blythwood Dr., Page 7, & Briarhurst
Dr., Page 9.
H.L. location if lies revised in easement
Page 10 & 11.
Jack C. Lansing

DOUBLE SCALE
LOMITA BLDG. DIST. NO. 12

PROFILE ALIGNMENT AND GRADE OF
SANITARY SEWERS
TO BE CONSTRUCTED IN
TRACT No 27134

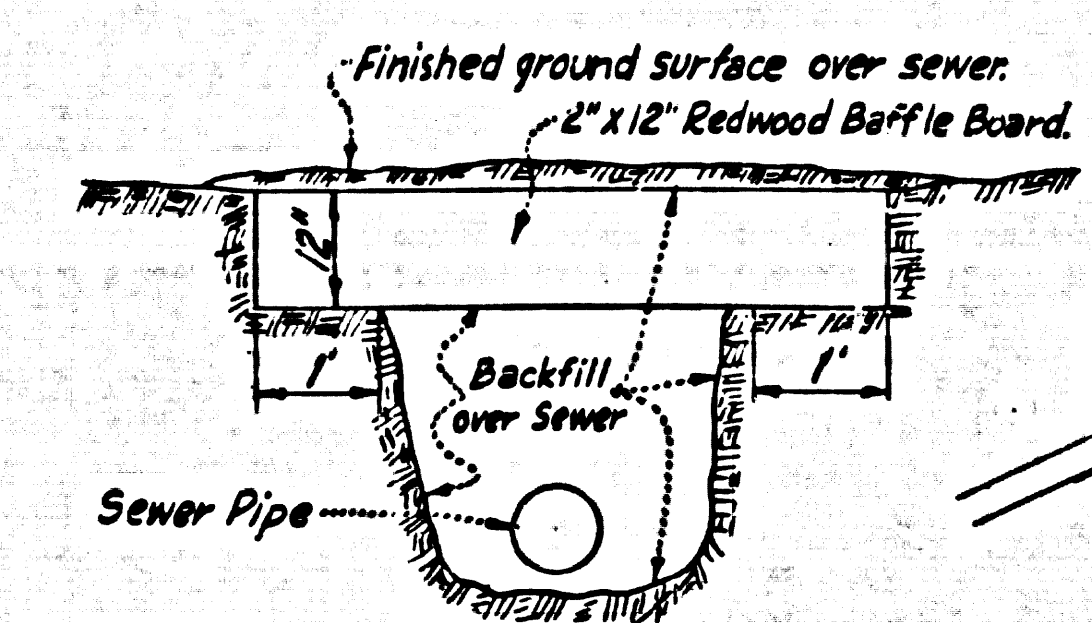
PRIVATE CONTRACT NO. 6156

W.S. 27
10 SHEETS, 20 PAGES
SCALE: VERT. 1" = 4'
HORIZ. 1" = 40'
FEBRUARY, 1962
PREPARED IN THE OFFICES OF
ENGINEERING SERVICE CORPORATION

33015

By: *P.J. Young*
REG. C. E. NO. 16622
FOR LEGEND SEE PLAN NO. S-A-64

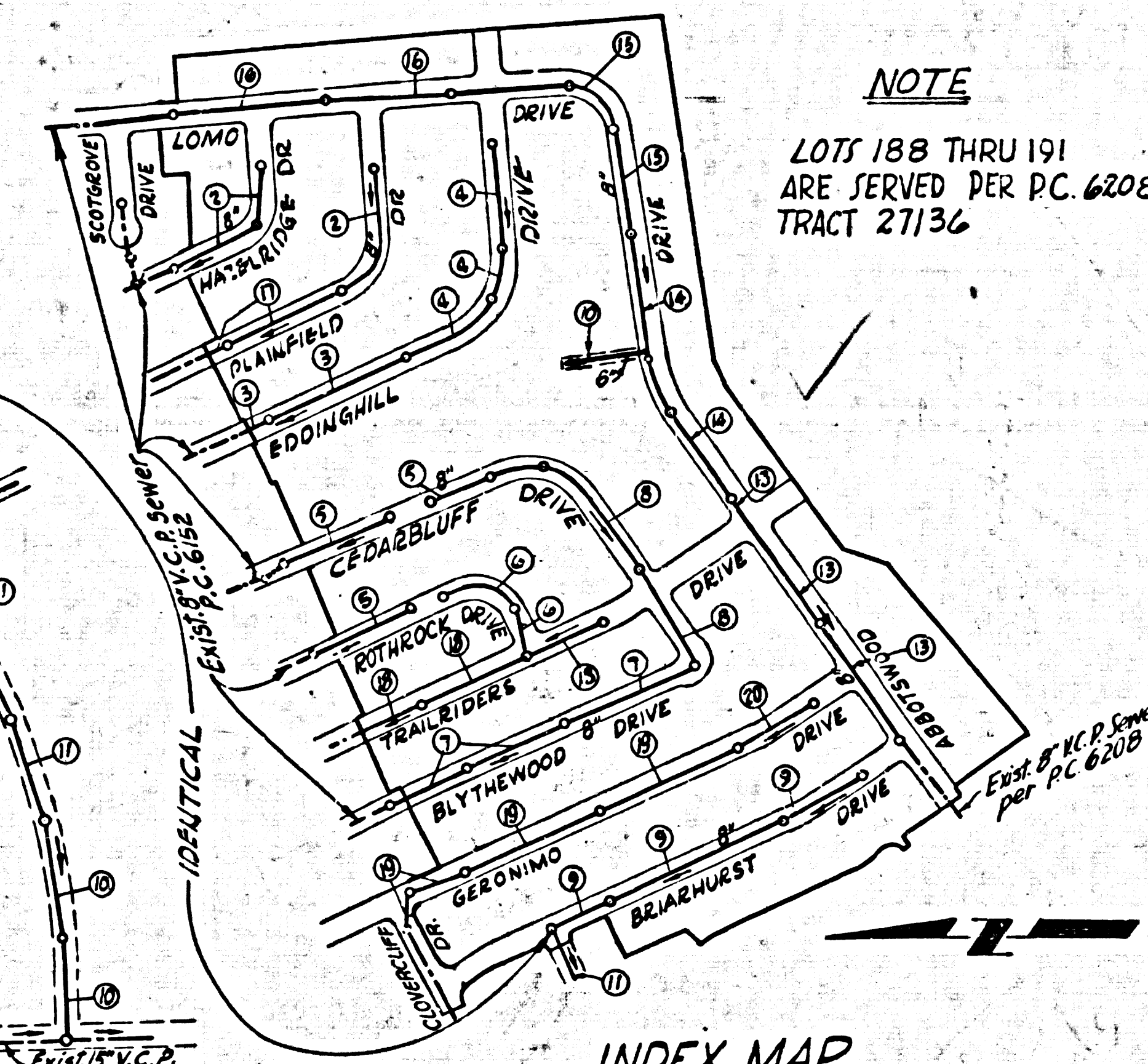
2"x12" REDWOOD Baffle Board Detail
no scale



- NOTE:
1. Each end of baffle board will extend one foot into undisturbed ground.
 2. Spacing of baffle boards not to exceed 5 feet on the horizontal.
 3. Baffle boards shall be used where slope of surface over sewer exceeds 35%.
 4. If 90% Compaction is obtained in the backfill within the Tract's baffle's will not be required.

PRIVATE ENGINEER'S
NOTICE TO CONTRACTOR

THE EXISTENCE AND LOCATION OF ANY UNDERGROUND UTILITY PIPES OR STRUCTURES SHOWN ON THESE PLANS ARE OBTAINED BY A SEARCH OF THE AVAILABLE RECORDS TO THE BEST OF OUR KNOWLEDGE. THERE ARE NO EXISTING UTILITIES EXCEPT AS SHOWN ON THIS MAP. THE CONTRACTOR IS REQUIRED TO TAKE PRECAUTIONARY MEASURES TO PROTECT THE UTILITY LINES SHOWN AND ANY OTHER LINES NOT OF RECORD OR NOT SHOWN ON THIS DRAWING.



INDEX MAP
Scale: 1" = 400'
TRACT No 27134
P.C. 6156

NO CHARGE FOR
CONNECTIONS

Edward J. Smith

REVISION: Relocated Sewer in Briarhurst Dr. from Sta. 5140 to 8101, Page 9
lot page 12 entirely removed Sewer from 0150 to 1132 and changed grade from Sta. 1787 to 2157, Page 12.
Deleted H.C. in Geronomo Dr. from Sta. 1787 to 2157, Page 12.
Deleted Sewer in Blythwood Drive Page 8
Edward J. Smith

REVISION: Deleted Sewer through easement lots 105-108 & H.C. in Geronomo Drive Page 22.
Deleted H.C. in Geronomo Dr. from Sta. 1787 to 2157, Page 12.
Deleted Sewer in Blythwood Drive Page 8
Ralph Schaefer 5-28-63

REVISION: 4-24-63
changed direction of flow of
Sewer on pages 5, 7, 8, 19 & 20
Ralph Schaefer

NO CONNECTIONS FOR THE DISPOSAL OF INDUSTRIAL WASTES SHALL BE MADE TO SEWERS SHOWN ON THESE DRAWINGS WITHOUT WRITTEN PERMISSION FROM THE CHIEF ENGINEER AND GENERAL MANAGER OF THE COUNTY SANITATION DISTRICTS.

- NOTES:
1. PROVIDE STAKES ON THE PROPERTY LINE OR PROPERTY LINES PRODUCED AT RIGHT ANGLES TO THE SEWER LINE AT THE CENTER LINE OF EACH MANHOLE.
 2. NO REPRESENTATIVE OF THE COUNTY ENGINEER WILL SURVEY OR LAY OUT ANY PORTION OF THE WORK.
 3. THE OWNER OR HIS AUTHORIZED REPRESENTATIVE SHALL FURNISH THE COUNTY ENGINEER WITH GRADE SHEETS AND STATION FOR ALL HOUSE LATERALS AND Y BRANCHES AND SHALL PROVIDE STAKES FOR THEM AT THEIR PROPER LOCATIONS WITH STATIONING PLAINLY MARKED. ANY CHANGE IN LOCATION SHALL BE REQUESTED IN WRITING BY THE OWNER OR HIS REPRESENTATIVE.
 4. NO REVISIONS SHALL BE MADE IN THESE PLANS WITHOUT THE APPROVAL OF THE COUNTY ENGINEER.
 5. USE STANDARD MANHOLE FRAMES AND COVERS, S.A.-17, EXCEPT AS NOTED.
 6. USE EXTRA STRENGTH PIPE, ALL PIPE STANDARD DEPTH, EXCEPT AS NOTED.
 7. USE "WEDGE LOCK" OR "SPEED SEAL" FOR ALL VERIFIED CLAY PIPE JOINTS PER SPECS., SEC. 36-648.
 8. RESURFACE ALL TRENCH WITHIN PAVED AREA TO MEET L. A. COUNTY ROAD DEPT., OR CALIF. STATE HIGHWAY DEPT. REQUIREMENTS IN ACCORDANCE WITH PERMITS.
 9. ENCASE FOUR FEET OF SEWER AT POINTS OF INTERFERENCE WITH POLES, CASE III, S-1-17E.
 10. HOUSE LATERALS TO BE CONSTRUCTED WITH INVERTS AT PROPERTY LINE... FEET BELOW CURB GRADE EXCEPT AS NOTED.
 11. ALL STRUCTURES SHALL BE BRICK SEWER STRUCTURES, S-1-11A, PRECAST REINFORCED CONCRETE MANHOLES PER S-1-15B OR S-1-17B MAY BE USED AS AN ALTERNATE IN LOCATIONS APPROVED BY THE COUNTY ENGINEER.
 12. FOR ALLOWABLE LEAKAGE TEST USE FORMULA NO. 2 SPECS., SEC. 54.
 13. MANHOLE TOPS IN UNIMPROVED RIGHTS-OF-WAY TO BE 6" ABOVE FINISHED GRADE.
 14. THE PRIVATE ENGINEER SHALL FURNISH THE HOUSE LATERAL DEPTH AT THE PROPERTY LINE BELOW THE TOP OF CURVE ELEVATION FOR EACH HOUSE LATERAL ON THE GRADE SHEET.
 15. THE CONTRACTOR SHALL NOTIFY THE CONSTRUCTION DIVISION BY TELEPHONE, MADISON 9-4742, EXT. 8153 AT LEAST 24 HOURS BEFORE STARTING ANY WORK UNDER THIS CONTRACT.
 16. SPECIFICATIONS DATED OCT. 25, 1961 APPLY TO THE CONSTRUCTION OF THIS PROJECT.
 17. (a) NO CONSTRUCTION WILL BE PERMITTED IN FILLED AREAS UNLESS ACCEPTABLE CERTIFICATION IS SUBMITTED TO THE CONSTRUCTION DIVISION OF THE COUNTY ENGINEERS DEPARTMENT THAT THE COMPACTION IS GREATER THAN 80%.
 - (b) IF COMPACTION IS LESS THAN 90% THE SEWER MUST BE CRADLED & SPECIAL M.H. BASES CONSTRUCTED AS SHOWN ON PLANS.
 - (c) IF COMPACTION IS GREATER THAN 90% CRADLING AND SPECIAL M.H. BASES ARE NOT REQUIRED, HOWEVER, JOINT COMPOUND MUST BE SUBSTITUTED FOR CEMENT MORTAR FOR ALL JOINTS IN FILLED AREAS.
 18. FOR ALLOWABLE LEAKAGE TEST USE FORMULA NO. 2 SPECS., SEC. 54.

ENGINEERING SERVICE CORPORATION
1127 W. WASHINGTON BLVD.
LOS ANGELES 15, CALIF. RI. 9-7281

REVISIONS		TRACED BY: <i>C.F.</i>
		DES'G'D BY: <i>L.H. F.K.</i>
		CK'D BY: <i>C.M.P.</i>
		SUBMITTED: _____

SUB STRUCTURES OK'D

W. O. NO.	DWG. NO.	DATE	SCALE	L.B.	F.B.
6681-225		Feb. 1962	As Noted		LOOSE SHEETS

NOTE:
GRADES TO WHICH THIS IMPROVEMENT IS TO BE CONSTRUCTED ARE SHOWN ON PLANS AND PROFILES. GRADE POINTS FOR TOP OF CURBS, CENTER LINE OF STREETS, OR CENTER LINE OF ALLEYS ARE SHOWN BY CIRCLES ON PROFILES AT ALL POINTS BETWEEN DESIGNATED POINTS. THE GRADE SHALL BE ESTABLISHED SO AS TO CONFORM TO A STRAIGHT LINE DRAWN BETWEEN SAID DESIGNATED POINTS.
ELEVATIONS ARE IN FEET ABOVE U.S.G.S. DATUM OR MEAN SEA LEVEL.
THIS DRAWING AND THE DATA HEREON ARE HEREBY MADE A PART OF THE SPECIFICATIONS.
WORK SHALL BE CONSTRUCTED ACCORDING TO SPECIFICATIONS ON FILE IN THE OFFICE OF THE COUNTY ENGINEER AND SHALL BE PROSECUTED ONLY IN THE PRESENCE OF THE COUNTY ENGINEER.
BEFORE WORK CAN BE STARTED THE CONTRACTOR MUST OBTAIN A PERMIT TO EXCAVATE IN COUNTY STREETS FROM THE L. A. COUNTY ROAD DEPT., DISTRICTS #8 AND #9 AND PAY A FEE TO THE COUNTY ENGINEER, ROOM 340 COUNTY ENGINEER BUILDING, 100 W. 9TH STREET SUFFICIENT TO COVER THE COST OF CONSTRUCTION INSPECTION AND RECORD PLANS.
APPROVAL OF THIS PLAN BY THE COUNTY OF LOS ANGELES DOES NOT CONSTITUTE A REPRESENTATION AS TO THE ACCURACY OF THE LOCATION OF OR THE EXISTENCE OR NON-EXISTENCE OF ANY UNDERGROUND UTILITY PIPE, OR STRUCTURE WITHIN THE LIMITS OF THIS PROJECT. THIS NOTE APPLIES TO ALL PAGES.
IF WORK IS TO BE DONE IN A STATE HIGHWAY, A PERMIT MUST BE OBTAINED FROM THE STATE OF CALIFORNIA, DIVISION OF HIGHWAYS, 120 SOUTH SPRING STREET.

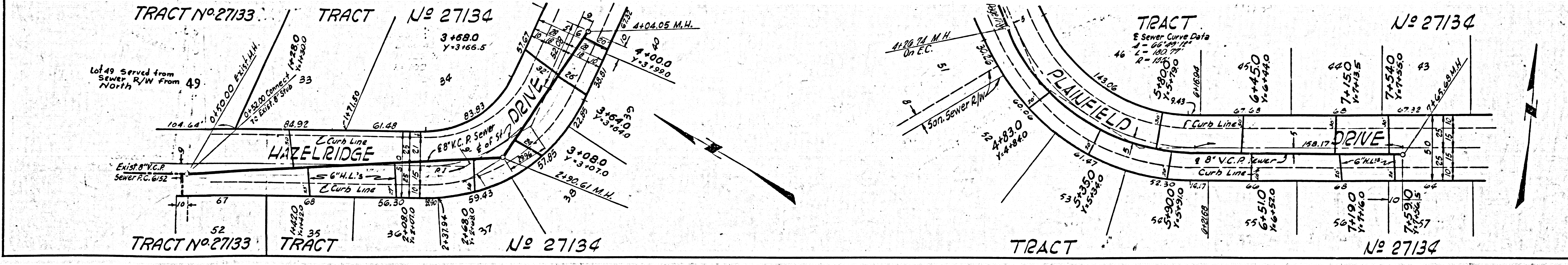
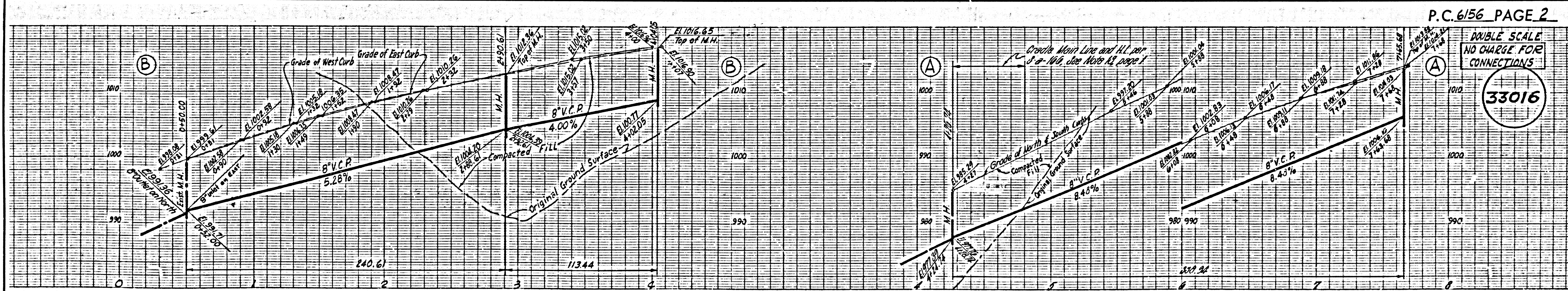
COUNTY OF LOS ANGELES, CALIFORNIA

APPROVED, JOHN A. LAMBIE, COUNTY ENGINEER
APPROVED, J.B. PARKHURST, CHIEF ENGINEER

By: *P.J. Young* ASST. SANITATION ENGINEER
By: *W.C. Williams* OFFICE ENGINEER

CHECKED BY: *W.K. Wida* 5-11-62
OFFICE OF COUNTY ENGINEER, REG. C. E. NO. 9406

SUBMITTED BY: *Jack C. Lansing*
PALMS VERDES-CENTINELA VALLEY REGIONAL ENGINEER, R.C.E. 5621

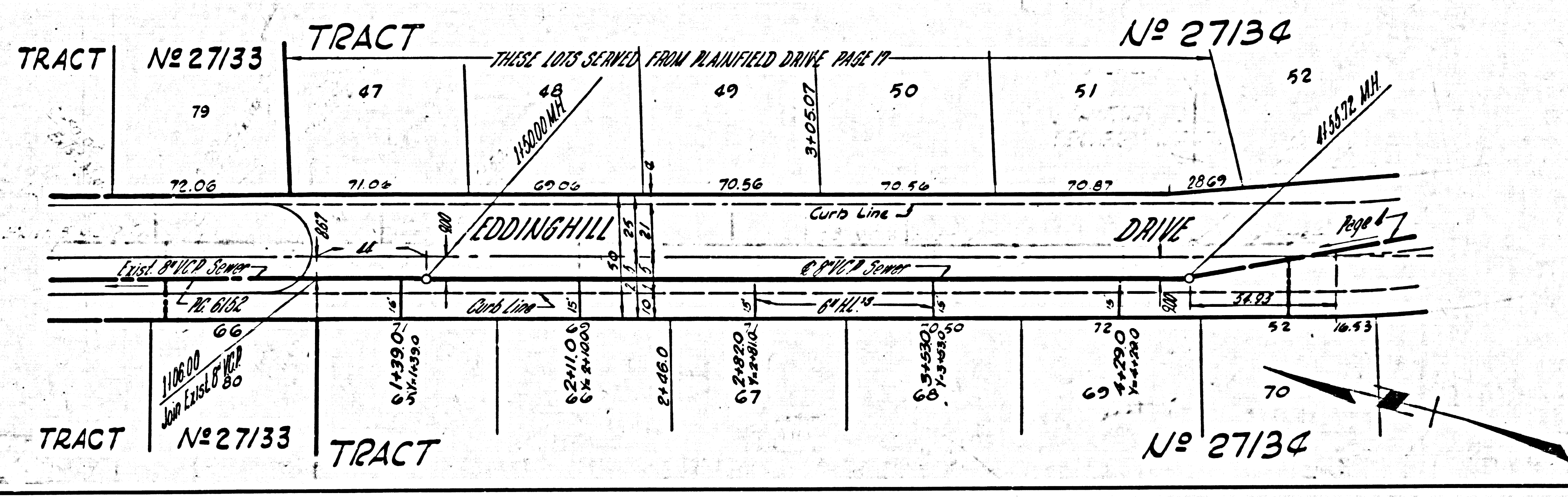
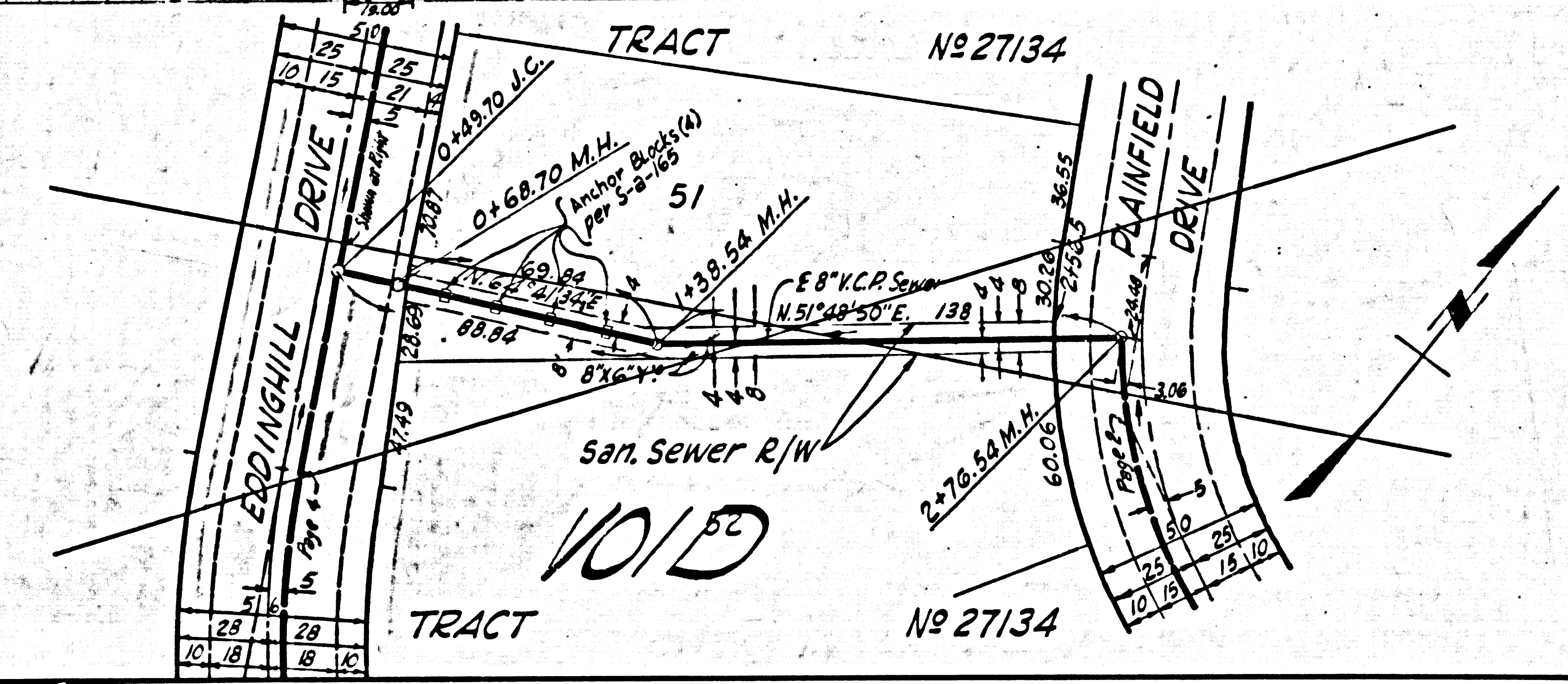
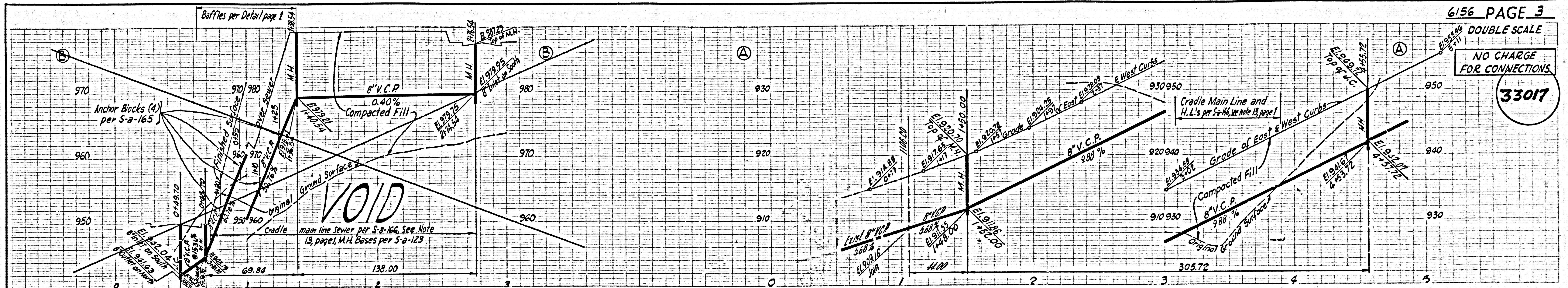


DOUBLE SCALE
NO CHARGE FOR
CONNECTIONS
33016

DOUBLE SCALE

NO CHARGE FOR CONNECTIONS

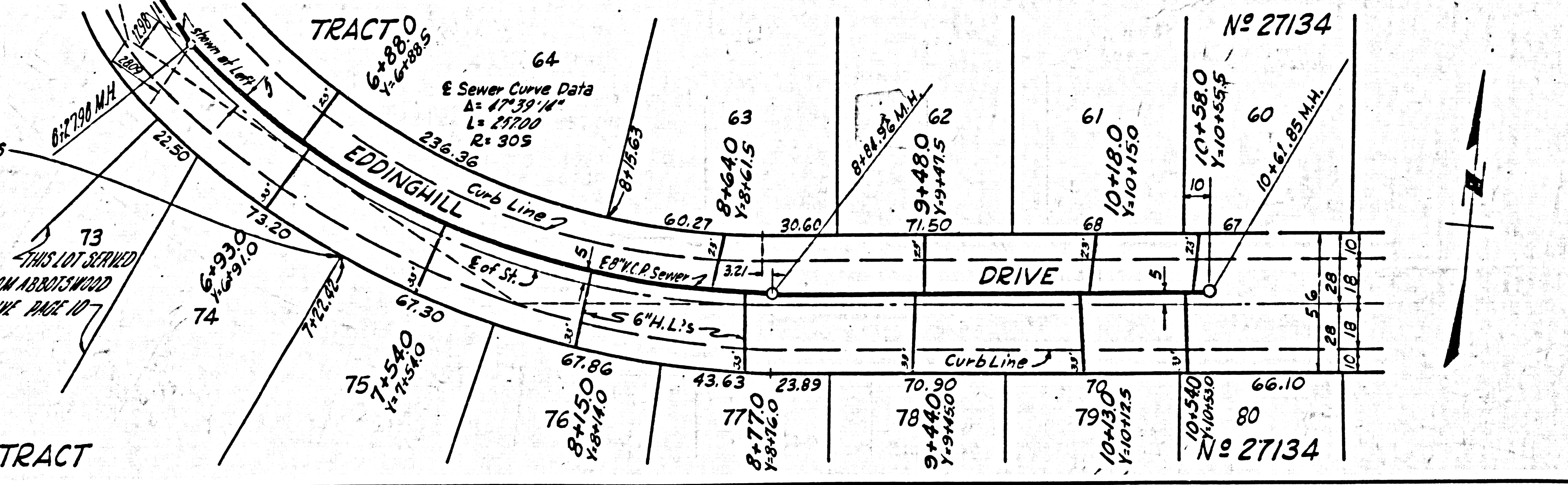
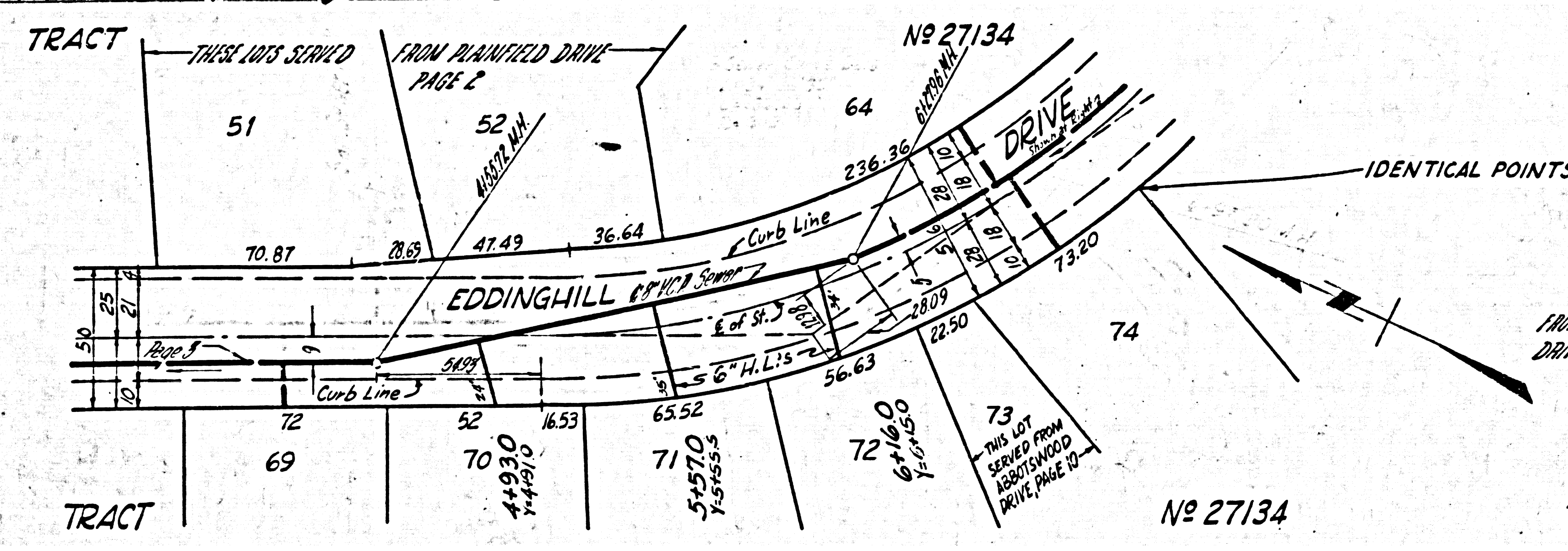
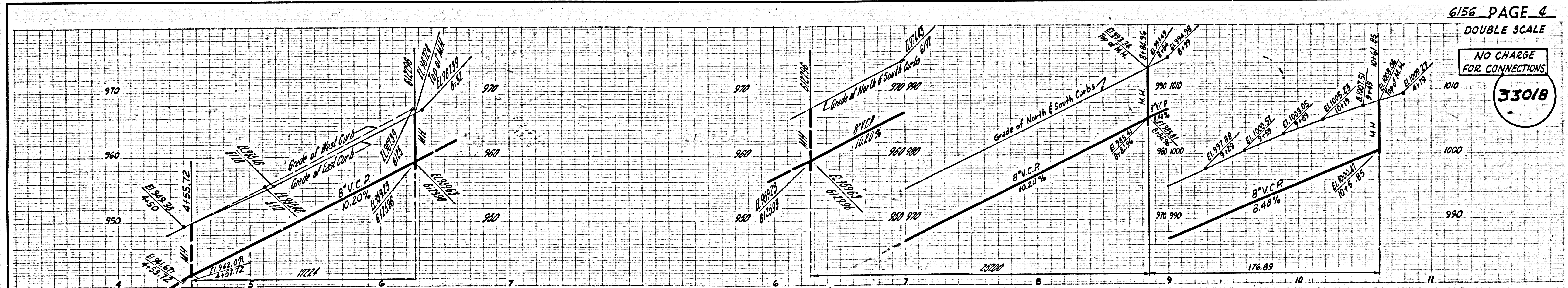
33017



DOUBLE SCALE

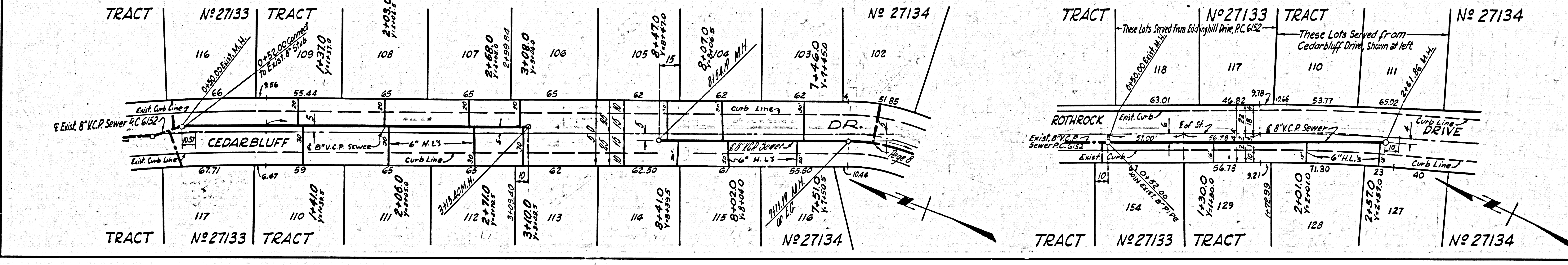
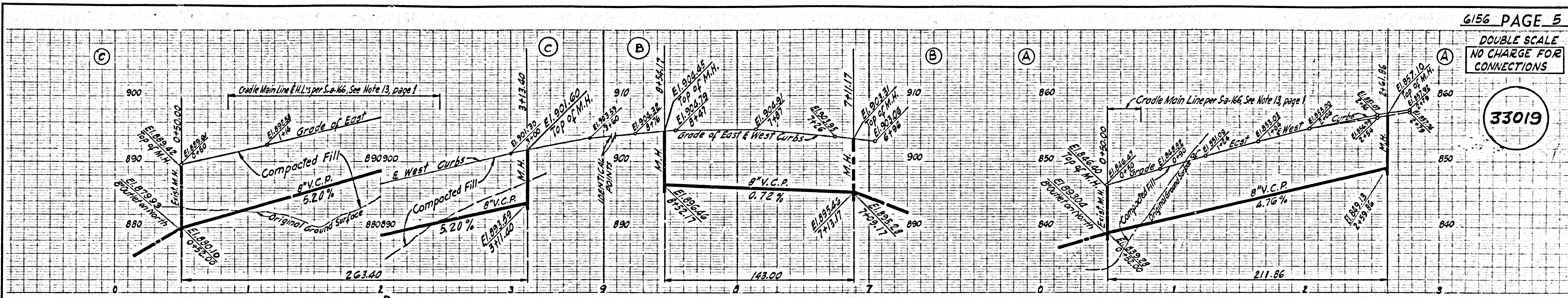
NO CHARGE FOR CONNECTIONS

33018



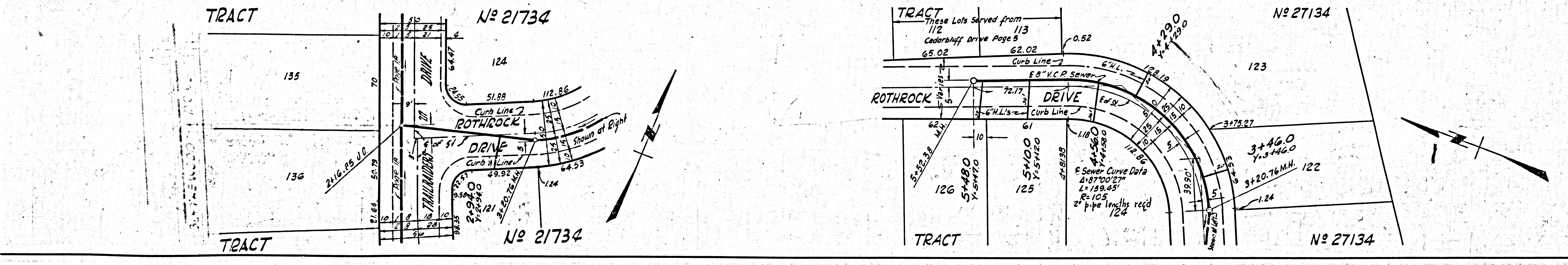
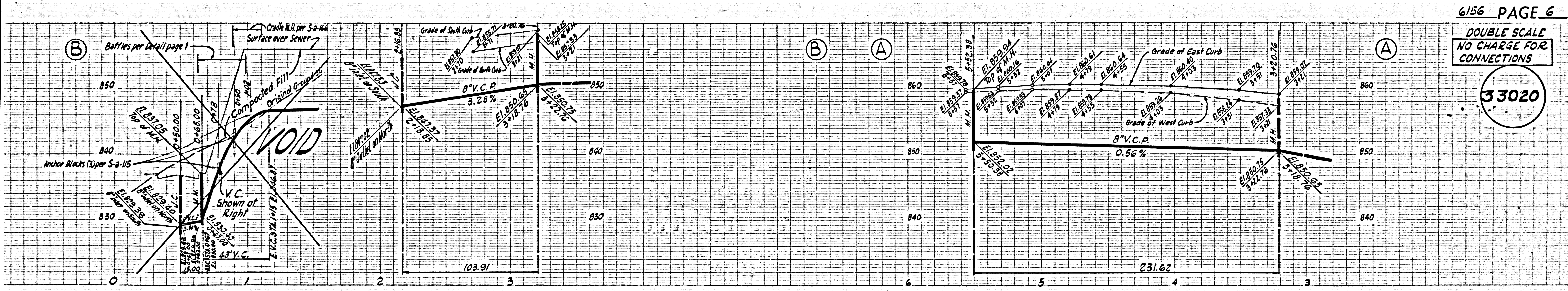
DOUBLE SCALE
NO CHARGE FOR
CONNECTIONS

33019



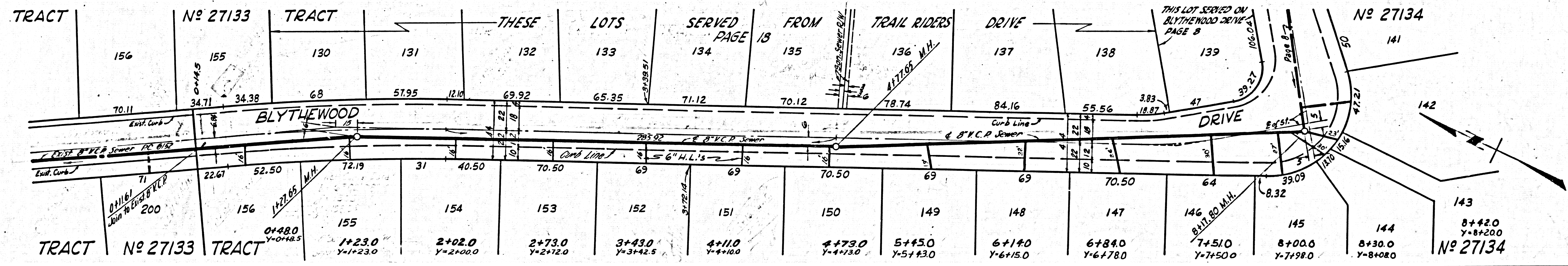
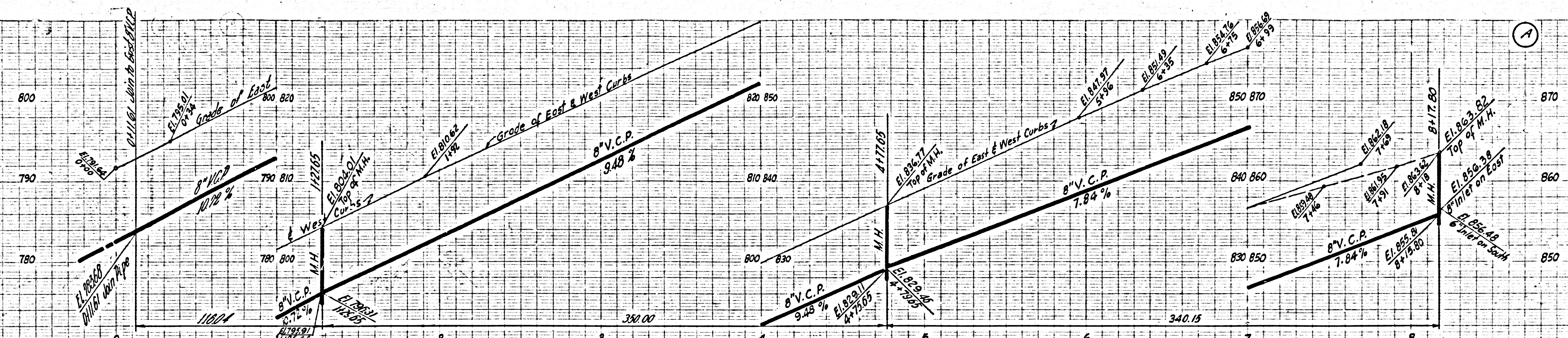
DOUBLE SCALE
NO CHARGE FOR
CONNECTIONS

33020



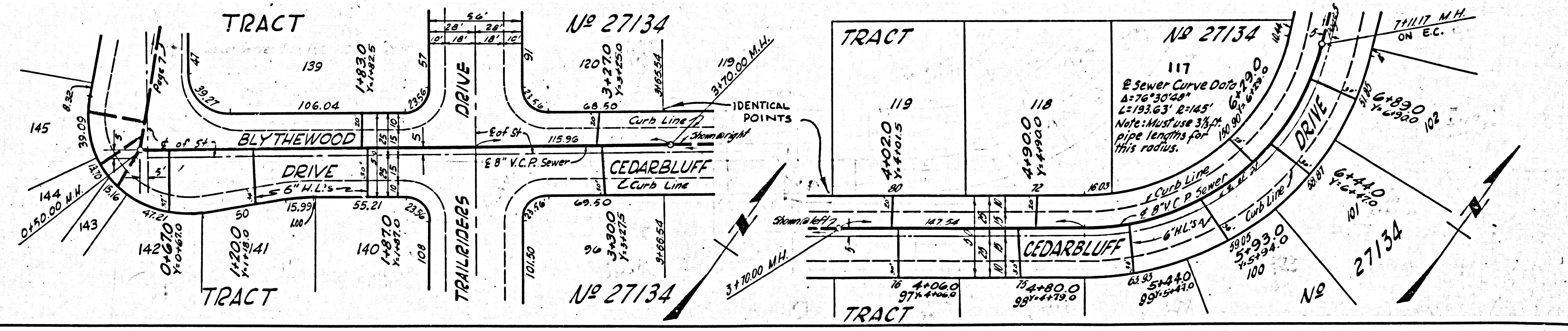
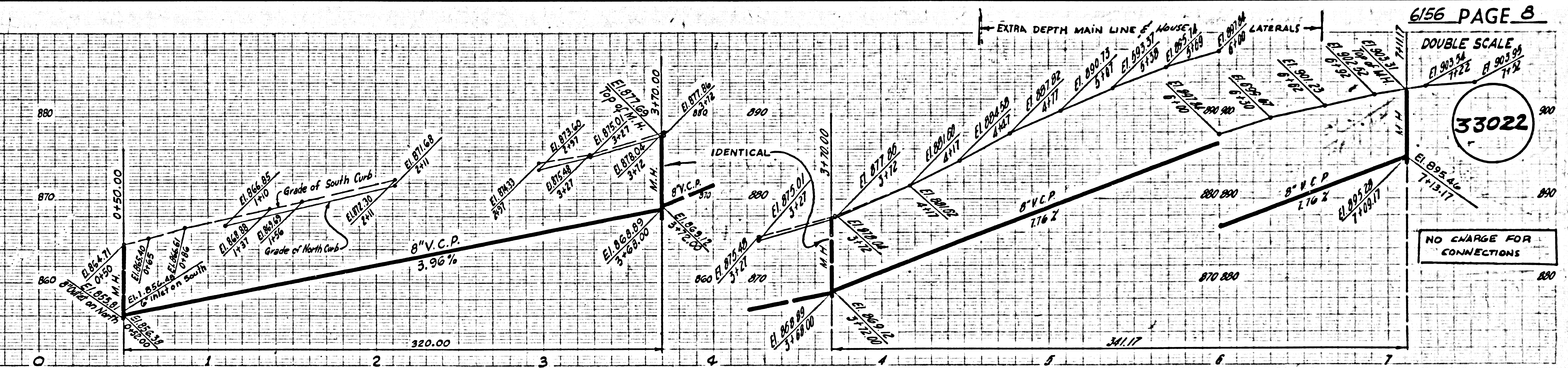
DOUBLE SCALE
NO CHARGE FOR
CONNECTIONS

33021



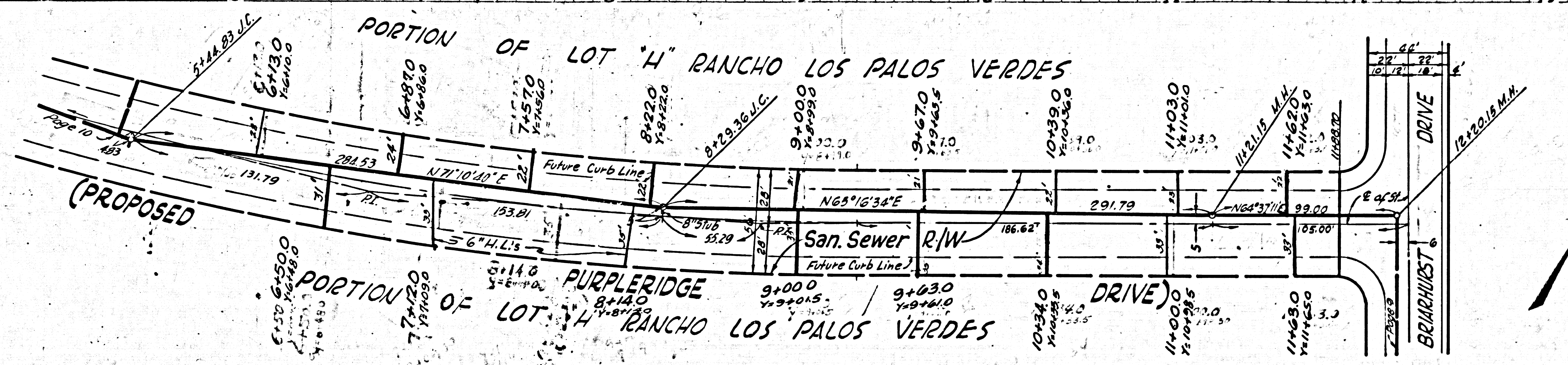
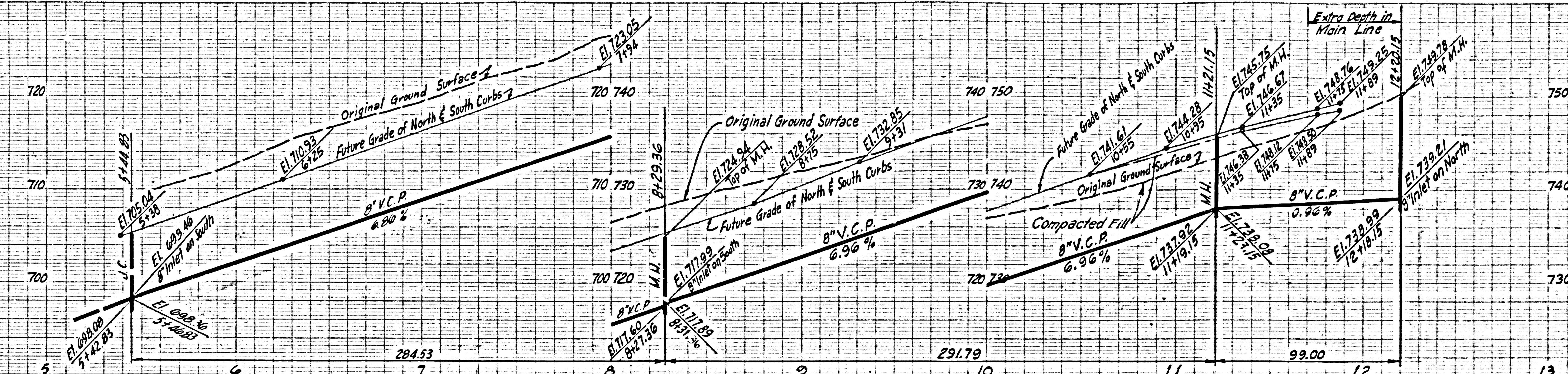
DOUBLE SCALE
NO CHARGE FOR
CONNECTIONS

33022



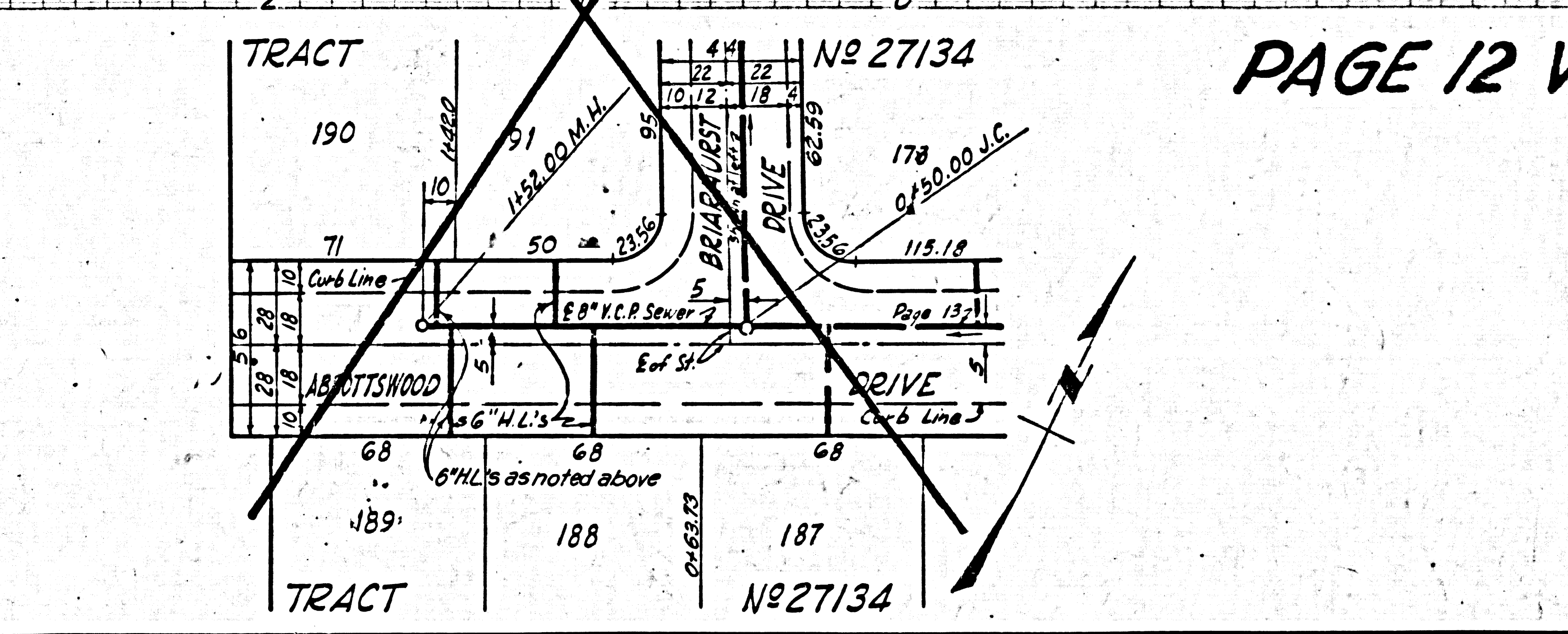
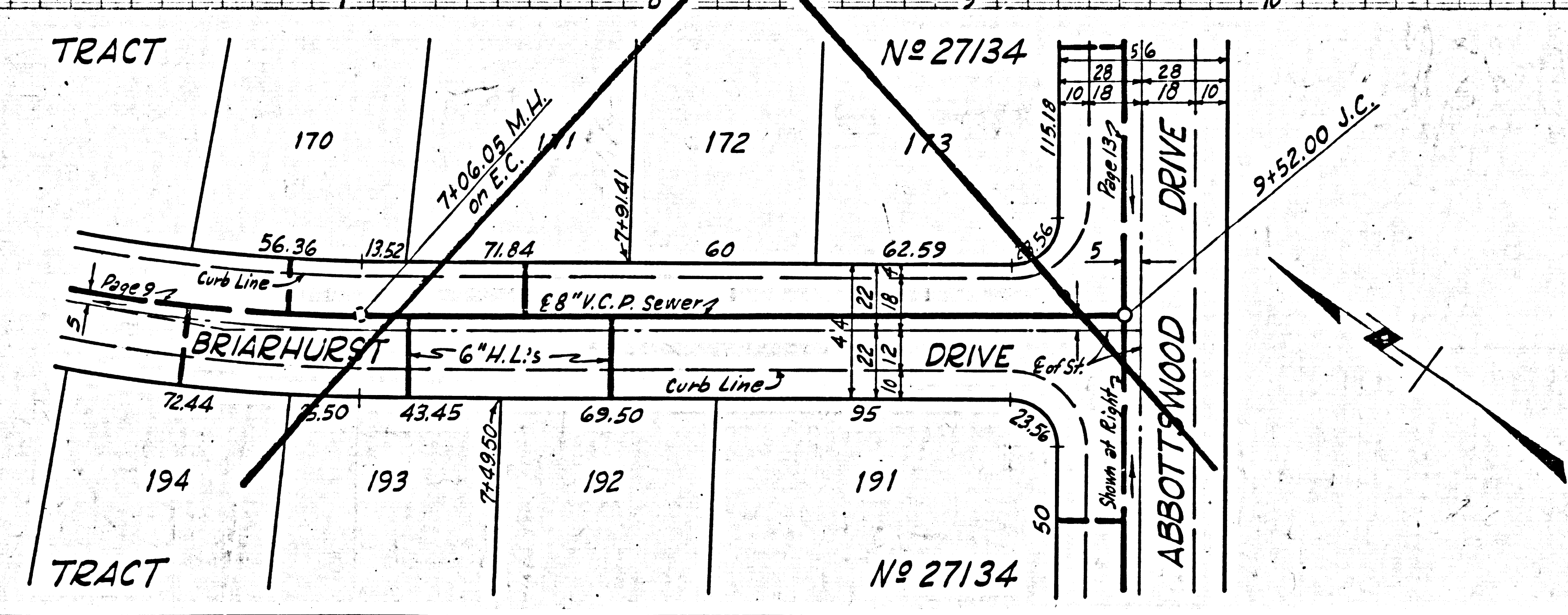
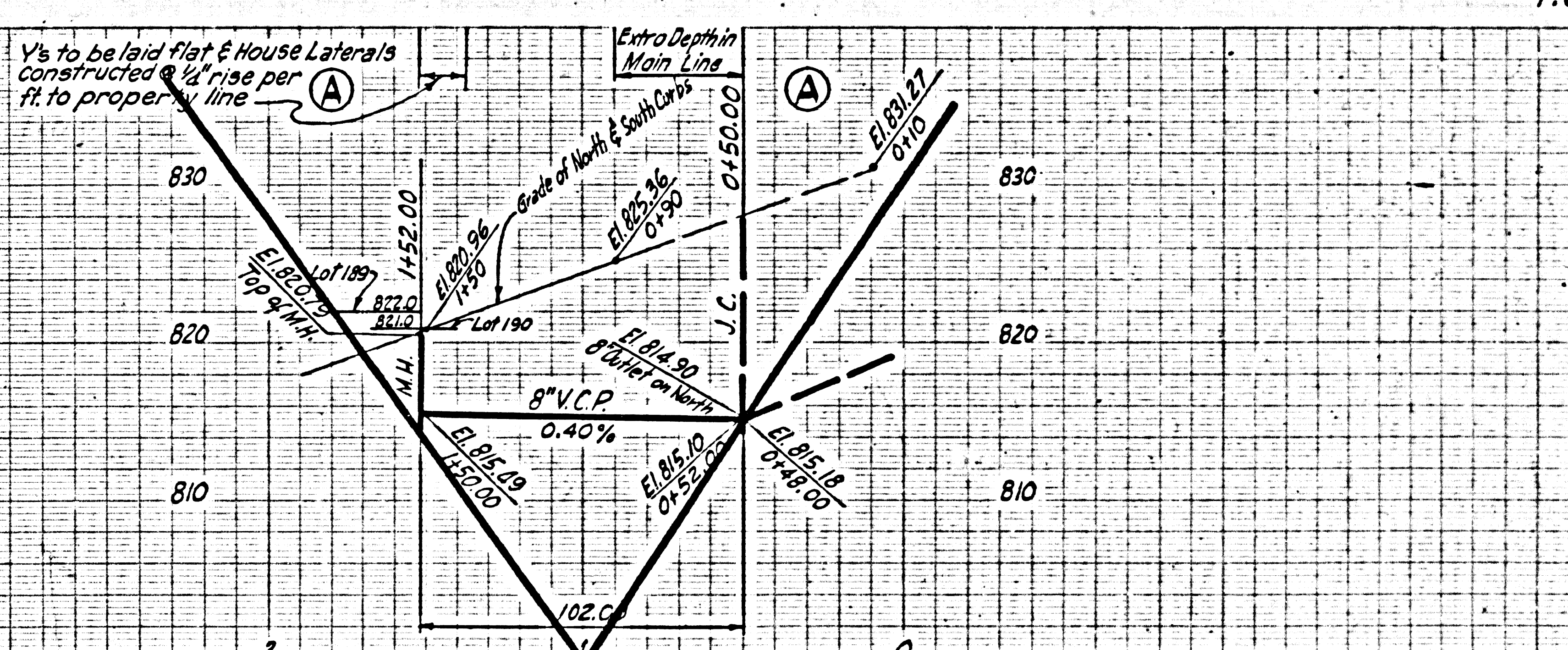
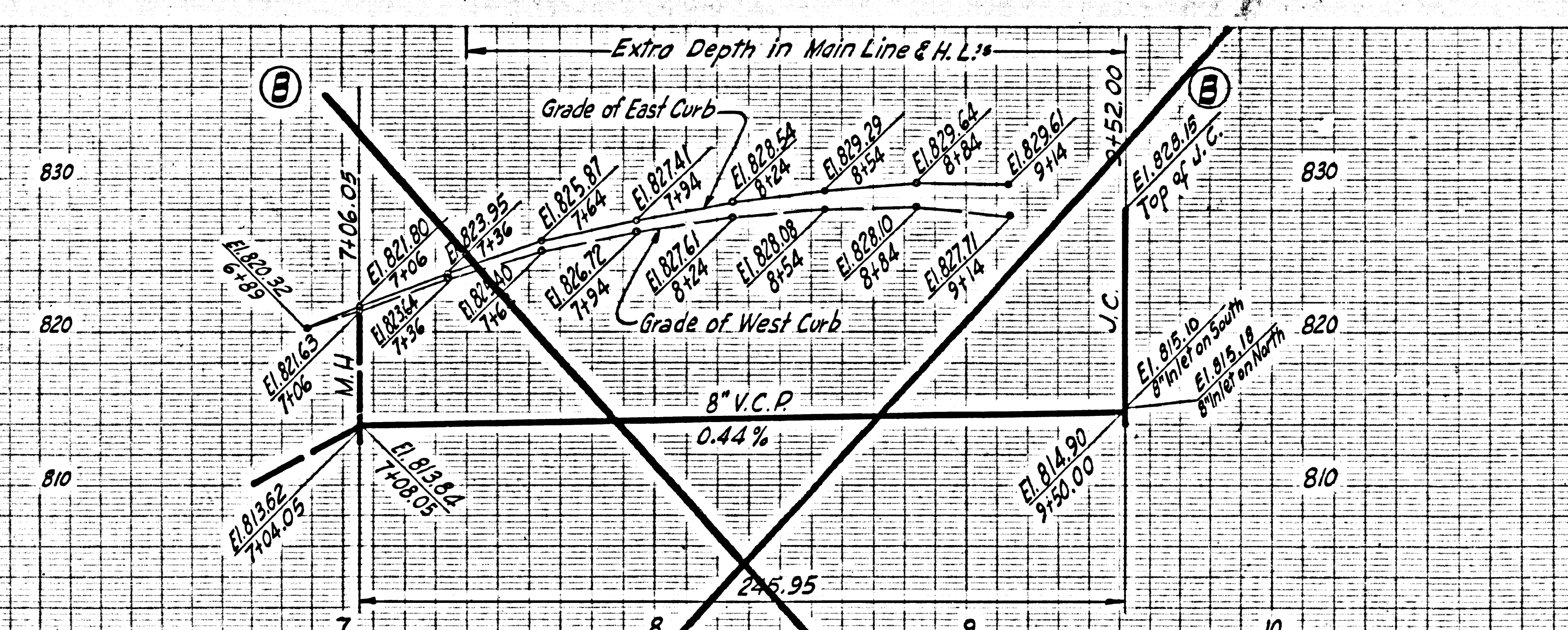
DOUBLE SCALE
NO CHARGE FOR
CONNECTIONS

33025



DOUBLE SCALE
NO CHARGE FOR
CONNECTIONS

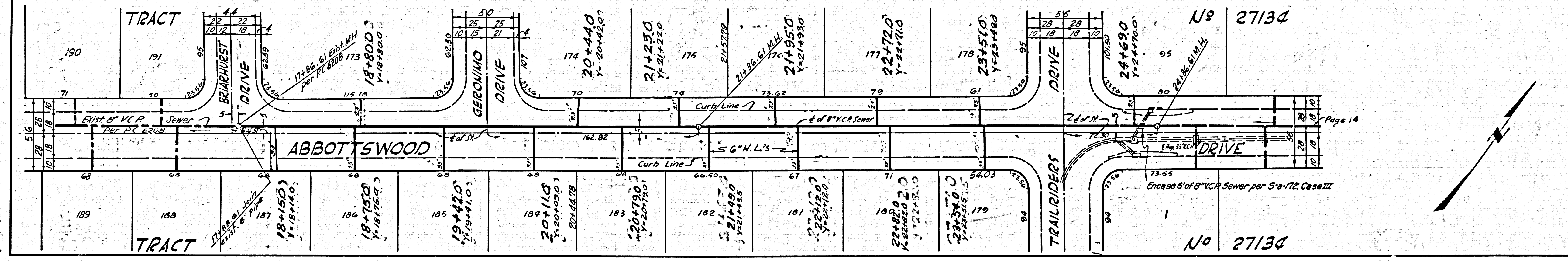
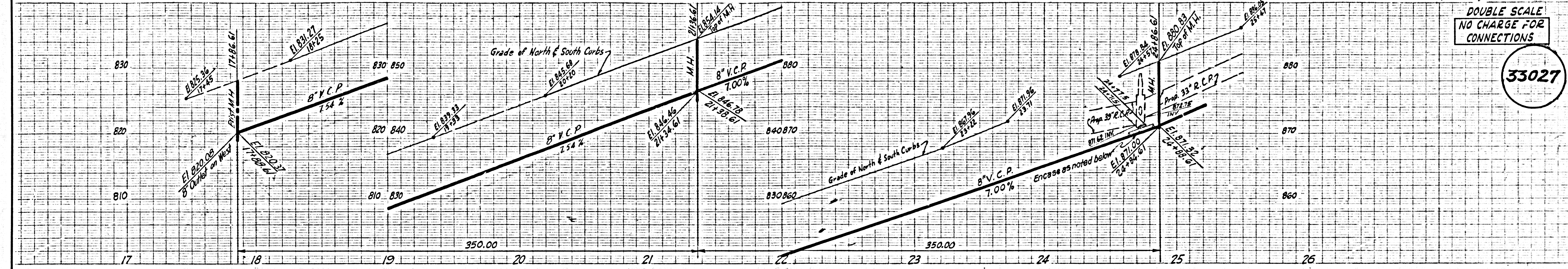
33026



PAGE 12 VOID

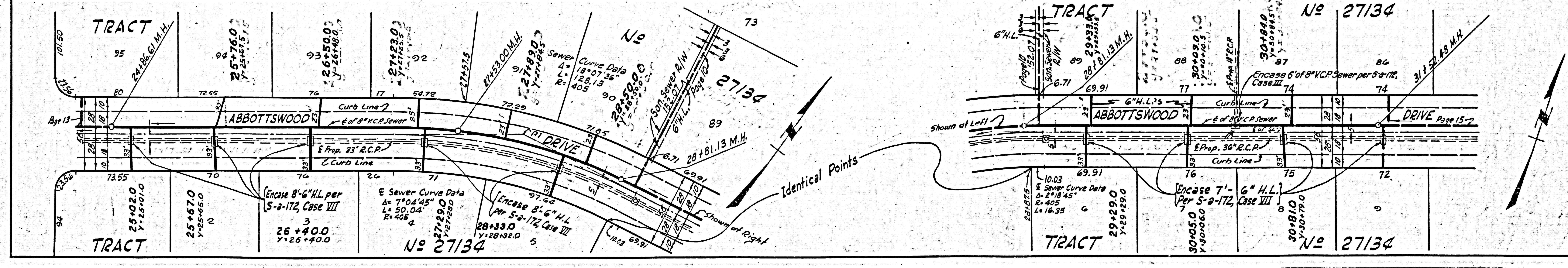
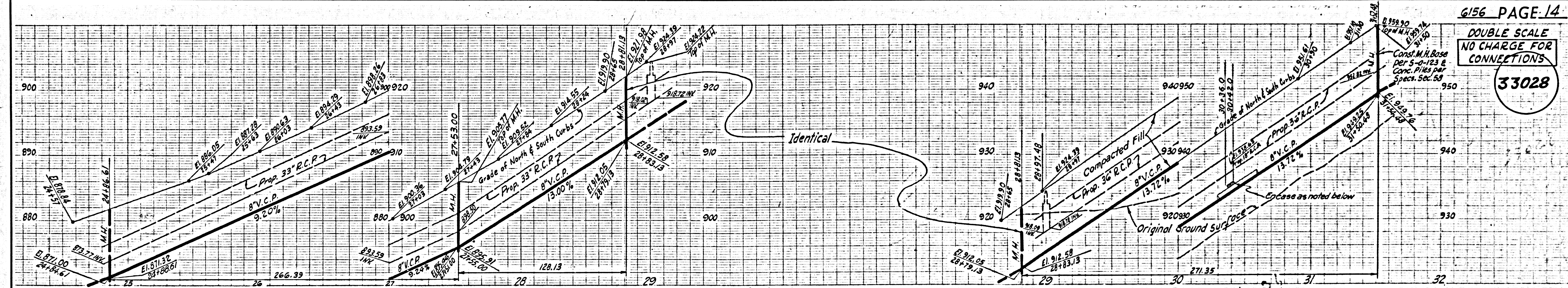
DOUBLE SCALE
NO CHARGE FOR
CONNECTIONS

33027



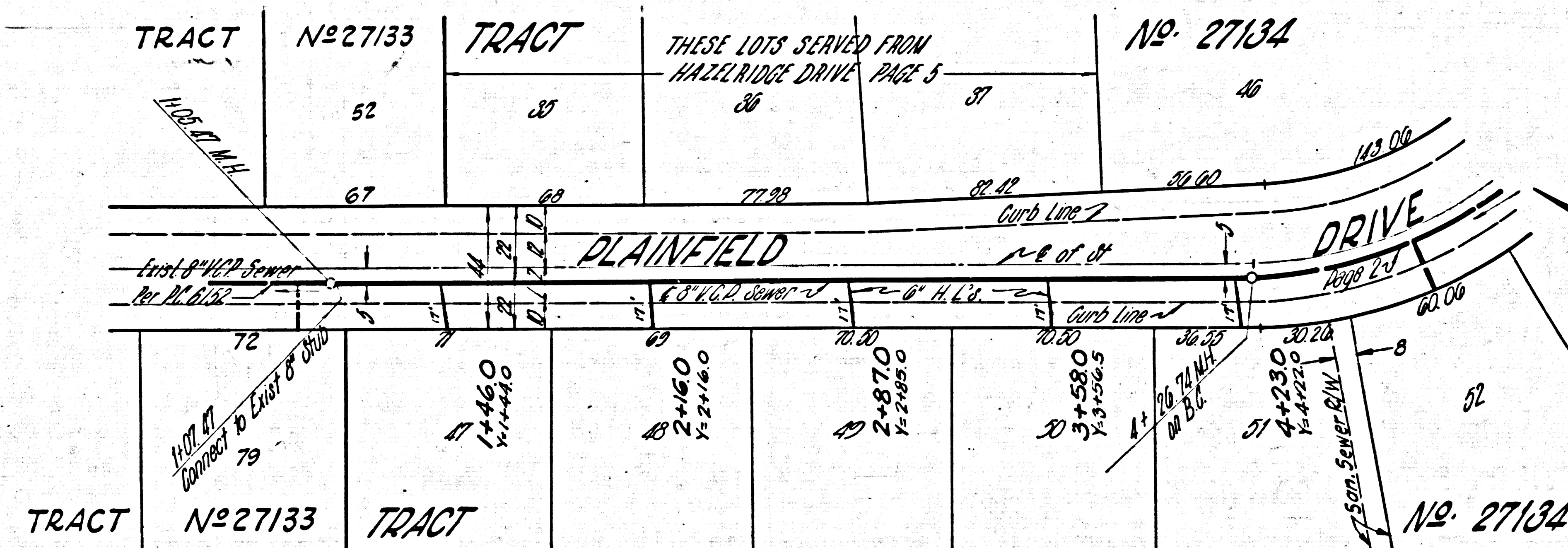
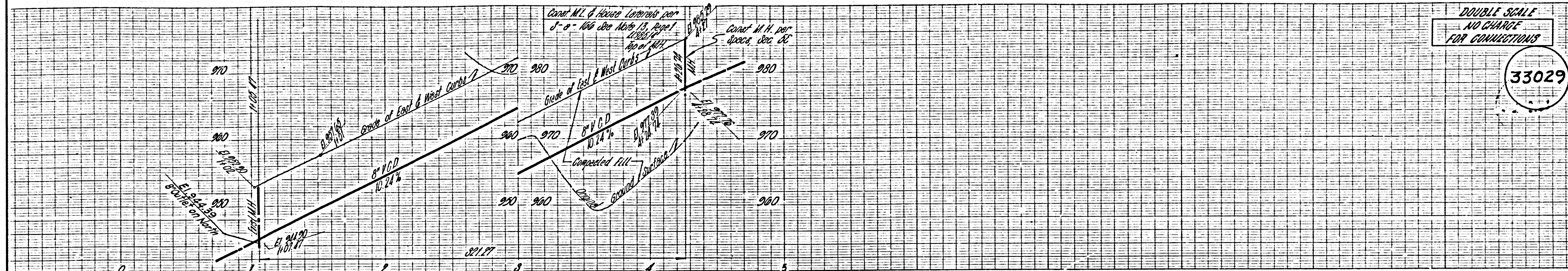
DOUBLE SCALE
NO CHARGE FOR
CONNECTIONS

33028



DOUBLE SCALE
NO CHARGE
FOR CONNECTIONS

33029



DOUBLE SCALE
NO CHARGE
FOR CONNECTIONS

33030

